



Australian Government
Operation COVID Shield

COVID-19 Vaccine Rollout

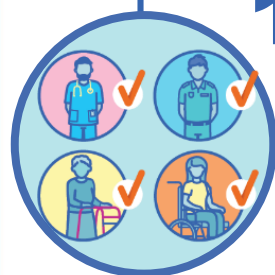
26 September 2021

Data as at:
25 Sep 2021

Total vaccine doses



26,660,961 total vaccine
doses administered nationally as at 25 September
+219,373 recorded in the last 24 hours



15,633,342

People over the age of 16 have
had at least one dose

75.8%

of people over the age of 16
have had at least one dose



10,616,323

people over the age of 16 are
fully vaccinated

51.5%

of people over the age of 16 are
fully vaccinated

NSW
9,665,303
(+85,578 daily
increase)

VIC
6,932,693
(+59,691 daily
increase)

QLD
4,605,622
(+34,965 daily
increase)

WA
2,324,519
(+14,375 daily
increase)

TAS
579,355
(+4,597 daily
increase)

SA
1,643,908
(+11,373 daily
increase)

ACT
645,227
(+7,892 daily
increase)

NT
264,334
(+902 daily
increase)

*Administration state breakdown indicates state in which a vaccine was administered

**Overall dose count includes instances of more than two doses per person in a small number of cases.

Source: Australian Immunisation Register

Data as at:
25 Sep 2021

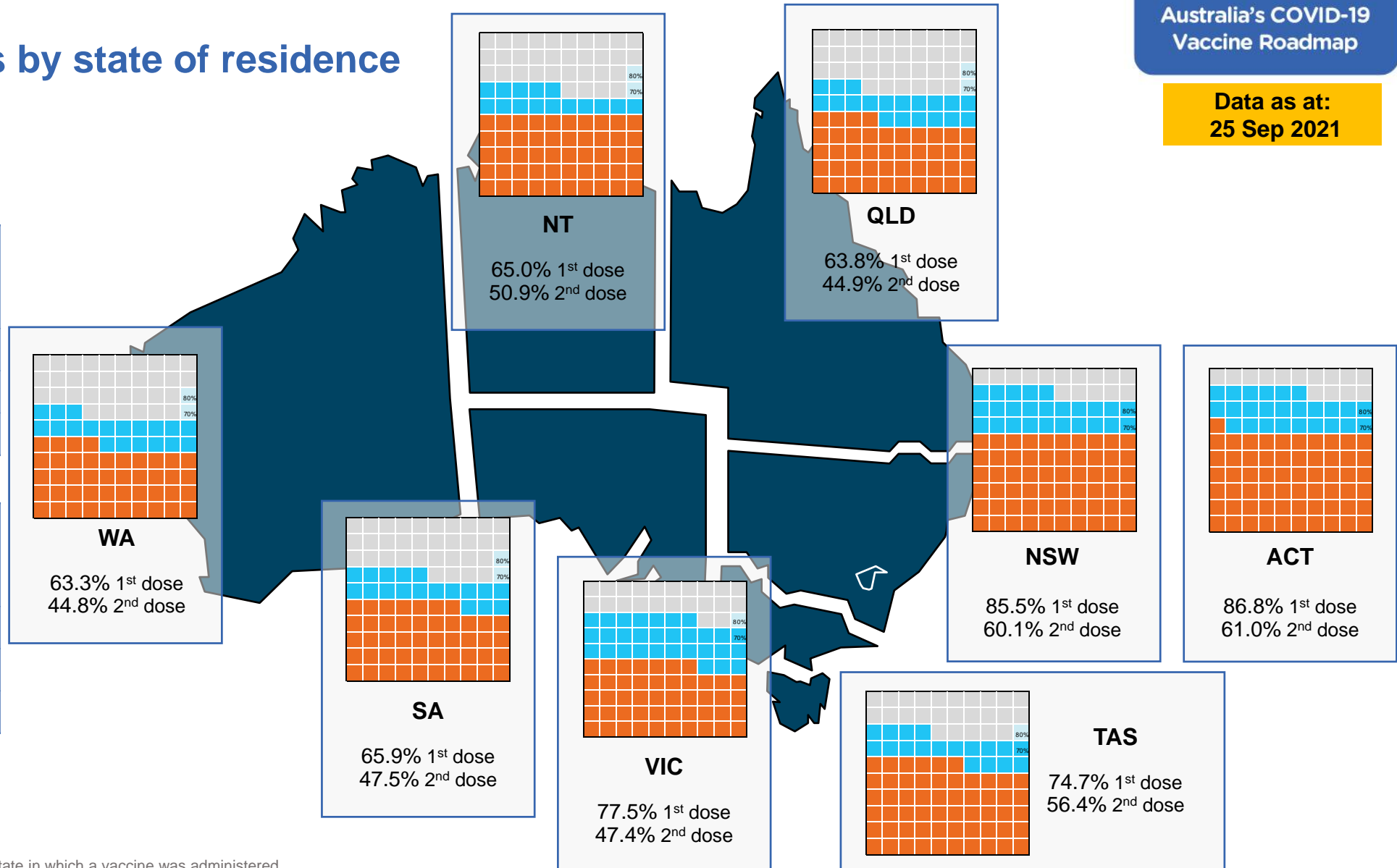
Vaccinations by state of residence

First doses

Age	Today	4 weeks ago	8 weeks ago
16+	75.8%	58.5%	41.5%
50+	88.1%	79.0%	66.7%
70+	93.8%	88.0%	80.8%

Fully vaccinated

Age	Today	4 weeks ago	8 weeks ago
16+	51.5%	34.8%	19.7%
50+	69.3%	51.6%	27.6%
70+	77.0%	63.2%	43.3%



*Residential state may differ from the state in which a vaccine was administered

Commonwealth and Jurisdiction vaccine doses administered

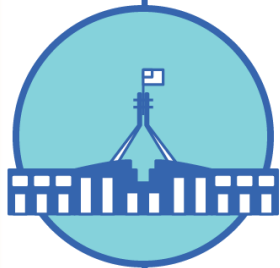
Data as at:
25 Sep 2021



26,660,961 total vaccine
doses administered nationally as at 25 September
+ 219,373 recorded in the last 24 hours



11,334,319
doses administered by state
and territory facilities
+ 103,432
recorded in the last 24 hours



15,326,642
doses administered by
commonwealth facilities
+ 115,941
recorded in the last 24 hours

14,360,235 total vaccine doses
administered in primary care settings
966,407 total vaccine doses
administered in aged care and disability
settings

NSW	Jurisdictions	Commonwealth
Cumulative	3,437,197	6,228,106
Daily increase	30,719	54,859

VIC	Jurisdictions	Commonwealth
Cumulative	3,350,353	3,582,340
Daily increase	31,047	28,644

QLD	Jurisdictions	Commonwealth
Cumulative	1,878,488	2,727,134
Daily increase	20,883	14,082

WA	Jurisdictions	Commonwealth
Cumulative	1,129,888	1,194,631
Daily increase	6,946	7,429

TAS	Jurisdictions	Commonwealth
Cumulative	318,336	261,019
Daily increase	2,461	2,136

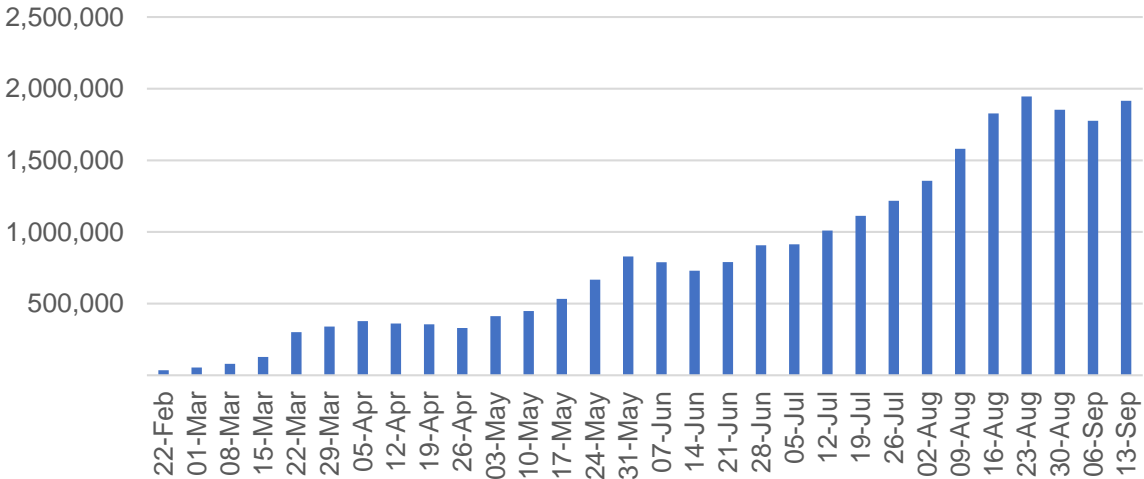
SA	Jurisdictions	Commonwealth
Cumulative	748,180	895,728
Daily increase	6,410	4,963

ACT	Jurisdictions	Commonwealth
Cumulative	312,249	332,978
Daily increase	4,298	3,594

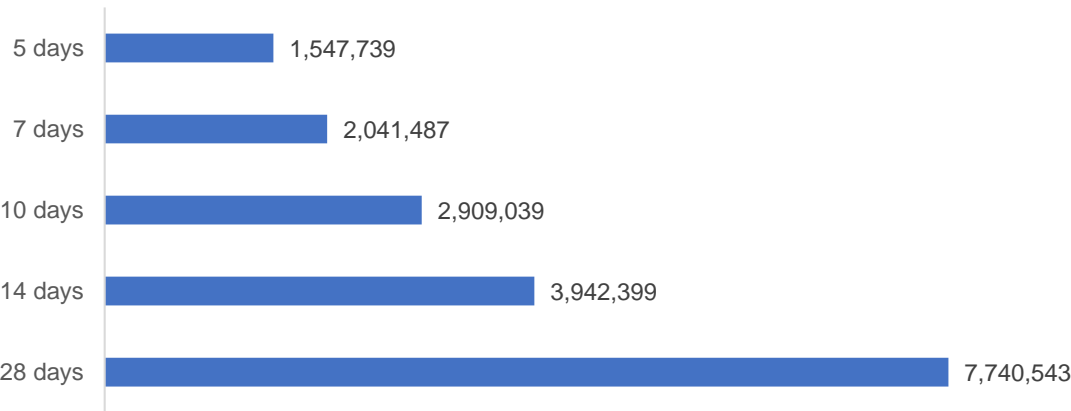
NT	Jurisdictions	Commonwealth
Cumulative	159,628	104,706
Daily increase	668	234

Vaccine milestone charts

Jabs in arms by week



Doses reported

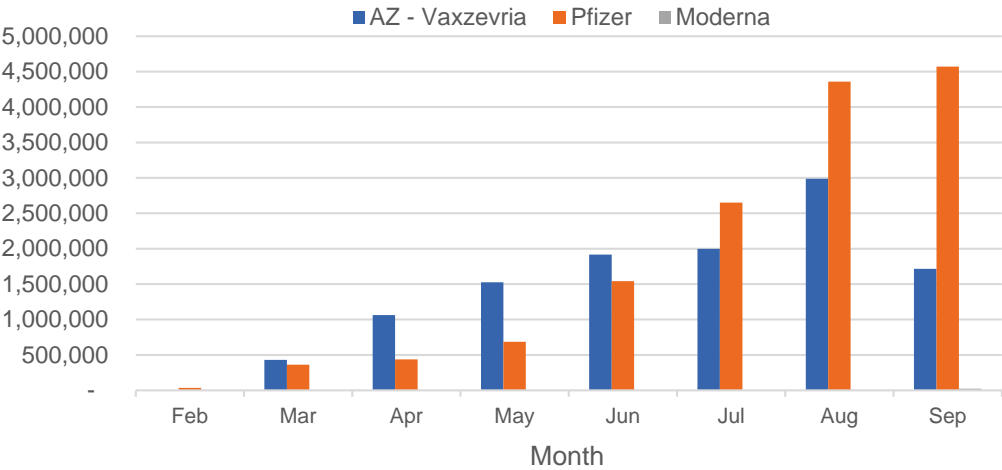


*Sourced from the Australian Immunisation Register, 28 day figure has readjustment of 6,895 from aged care removed

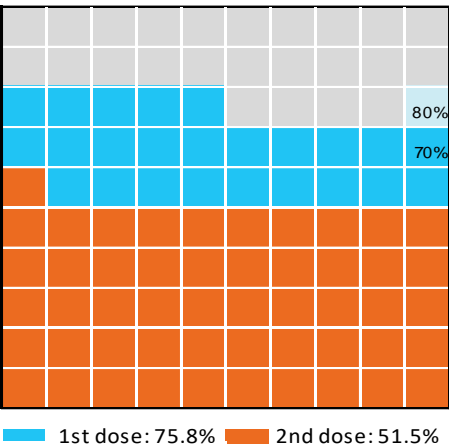
Data as at:
25 Sep 2021

Australia's COVID-19
Vaccine Roadmap

Doses by administration month and vaccine type



Eligible population percentage coverage



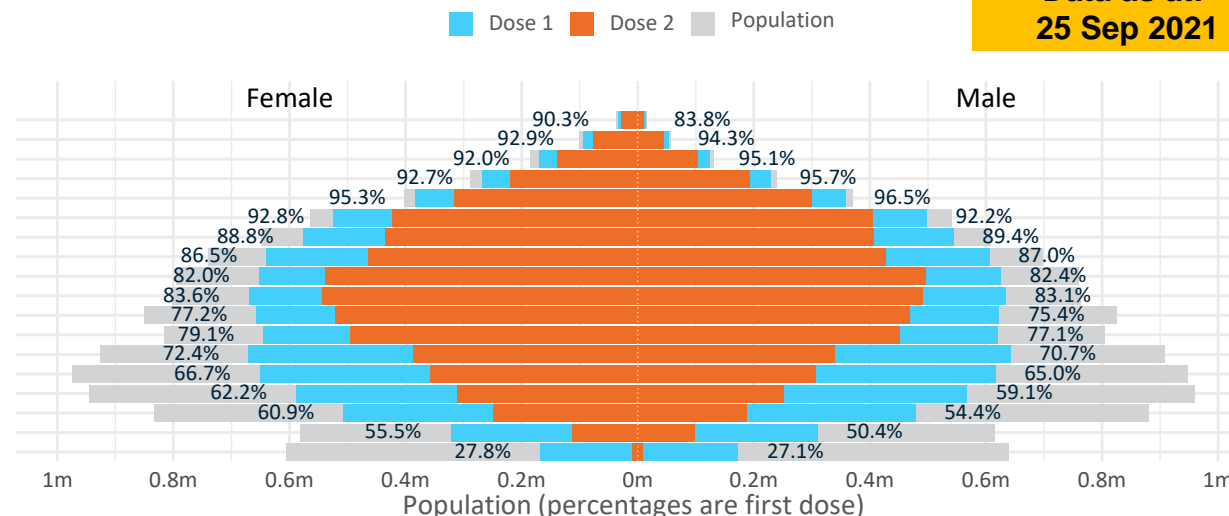
*Each square represents 1% of the national population.
Squares are filled as milestones are achieved.

Data as at:
25 Sep 2021

Doses by age and sex

First and second doses by age and sex

Age	Dose 1	Dose 2
95+	46,852 (88.5%)	38,624 (73.0%)
90-94	148,193 (93.5%)	121,936 (77.0%)
85-89	295,126 (93.3%)	241,870 (76.5%)
80-84	497,572 (94.2%)	411,781 (77.9%)
75-79	742,238 (95.9%)	616,043 (79.6%)
70-74	1,023,364 (92.6%)	829,474 (75.1%)
65-69	1,122,448 (89.2%)	841,720 (66.9%)
60-64	1,247,189 (86.8%)	892,235 (62.1%)
55-59	1,279,554 (82.3%)	1,036,186 (66.6%)
50-54	1,305,033 (83.4%)	1,036,270 (66.2%)
45-49	1,280,987 (76.4%)	989,584 (59.0%)
40-44	1,267,456 (78.2%)	948,464 (58.5%)
35-39	1,316,445 (71.7%)	727,246 (39.6%)
30-34	1,273,460 (66.2%)	668,220 (34.7%)
25-29	1,164,800 (61.1%)	566,360 (29.7%)
20-24	990,358 (57.8%)	438,989 (25.6%)
16-19	632,267 (52.9%)	211,321 (17.7%)
12-15	340,992 (27.4%)	18,514 (1.5%)



	AUS	ACT	NSW	NT	QLD	SA	TAS	VIC	WA
16 and over - dose 1	15,633,342	298,711	5,614,448	123,957	2,623,094	949,149	328,598	4,188,383	1,339,665
16 and over - dose 2	10,616,323	209,829	3,943,347	97,036	1,845,627	684,822	248,072	2,561,754	947,074
16 and over - population	20,619,959*	344,037	6,565,651	190,571	4,112,707	1,440,400	440,172	5,407,574	2,114,978
16 and over % with dose 1	75.82%	86.83%	85.51%	65.05%	63.78%	65.89%	74.65%	77.45%	63.34%
16 and over % with dose 2	51.49%	60.99%	60.06%	50.92%	44.88%	47.54%	56.36%	47.37%	44.78%
50 and over - dose 1	7,707,569	127,202	2,610,952	47,574	1,445,772	557,723	191,121	1,957,221	722,033
50 and over - dose 2	6,066,139	109,370	2,075,887	38,841	1,112,542	425,576	157,154	1,557,301	558,122
50 and over - population	8,749,703	127,802	2,807,793	62,280	1,758,855	674,384	220,036	2,211,211	885,370
50 and over % with dose 1	88.09%	>95%	92.99%	76.39%	82.20%	82.70%	86.86%	88.51%	81.55%
50 and over % with dose 2	69.33%	85.58%	73.93%	62.37%	63.25%	63.11%	71.42%	70.43%	63.04%
70 and over - dose 1	2,753,345	41,779	928,141	10,209	524,765	217,881	72,223	687,387	251,182
70 and over - dose 2	2,259,728	36,367	770,359	8,397	427,368	170,874	60,837	569,157	201,657
70 and over - population	2,934,706	39,946	962,606	12,343	577,767	240,514	77,155	743,519	280,281
70 and over % with dose 1	93.82%	>95%	>95%	82.71%	90.83%	90.59%	93.61%	92.45%	89.62%
70 and over % with dose 2	77.00%	91.04%	80.03%	68.03%	73.97%	71.05%	78.85%	76.55%	71.95%
12 to 15 - dose 1	340,992	6,535	157,180	3,674	47,022	8,942	2,694	99,955	12,970
12 to 15 - dose 2	18,514	481	9,785	904	3,415	337	334	2,541	564
12 to 15 - population	1,243,990	19,693	390,330	13,060	270,146	82,747	26,308	308,611	132,869
12 to 15 % with dose 1	27.41%	33.18%	40.27%	28.13%	17.41%	10.81%	10.24%	32.39%	9.76%
12 to 15 % with dose 2	1.49%	2.44%	2.51%	6.92%	1.26%	0.41%	1.27%	0.82%	0.42%

*National population will not equal sum of listed jurisdictions due to a small number of people counted in national population residing in some 'other' territories. Sum of state doses will not add to national total as some records are unable to be geocoded to a State or Territory.

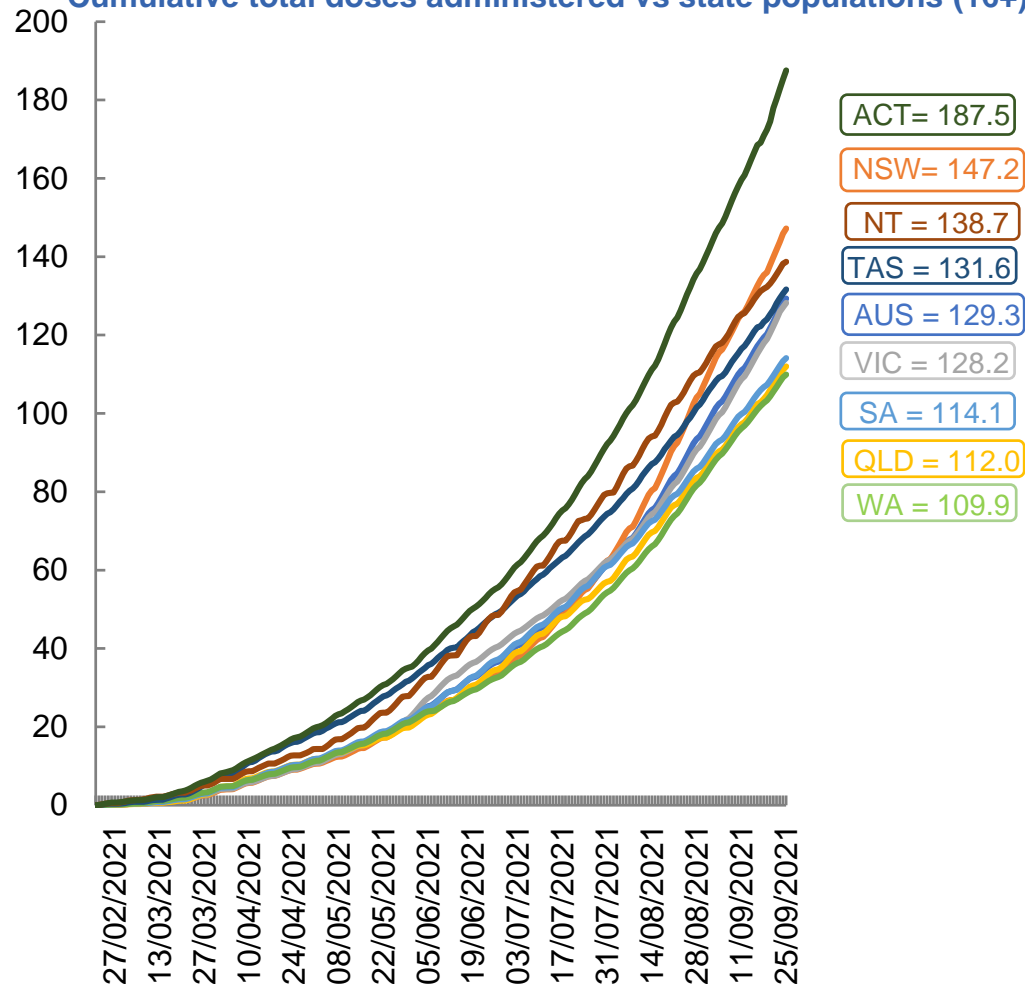
Doses sourced from Australian Immunisation Register, population from ABS ERP June 2020

Vaccinations by location

Data as at:
25 Sep 2021

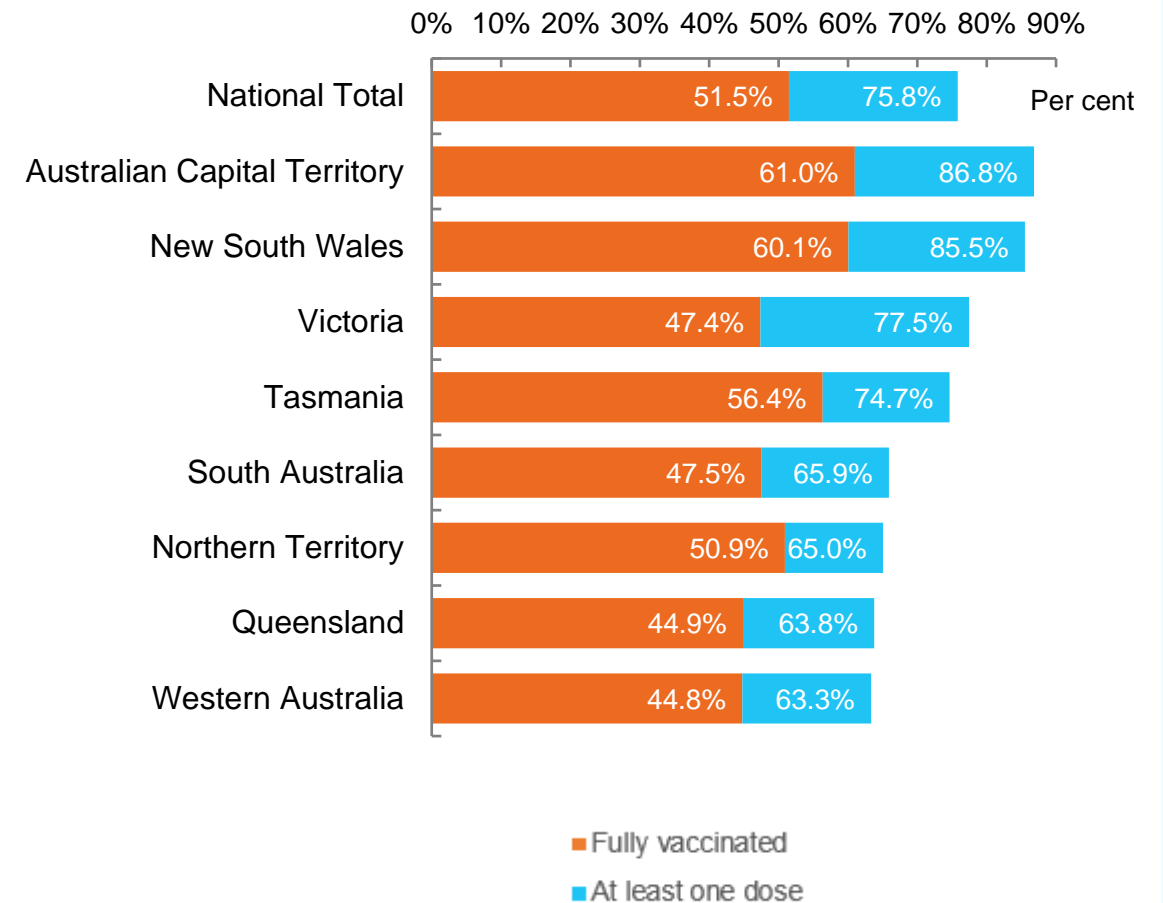
Australia's COVID-19
Vaccine Roadmap

Cumulative total doses administered vs state populations (16+)*



*Not an indication of percentage vaccinated, numbers will exceed 100 due to multiple doses required per person of the population

First and Second Doses by state of residence



Aboriginal and Torres Strait Islander peoples

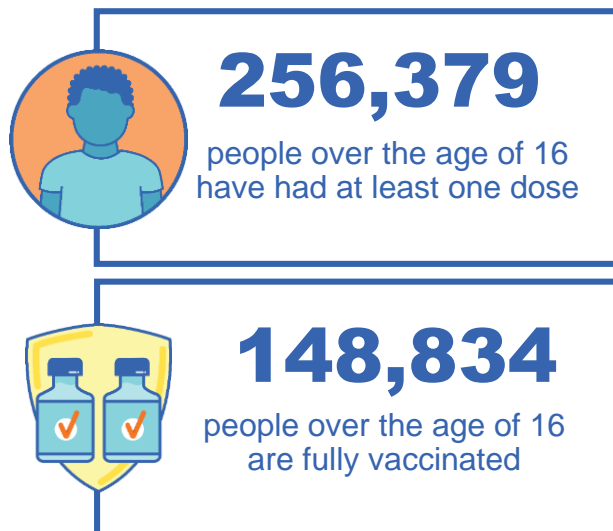
Number of people vaccinated

Data as at:
19 Sep 2021
Updated weekly

Australia's COVID-19
Vaccine Roadmap

165 Aboriginal community controlled health services (ACCHS)

0#	48	25	39	11	3	21	18
ACT	NSW	NT	QLD	SA	TAS	VIC	WA



6,983 people with at least one dose
3,551 people fully vaccinated

*Identifying as Aboriginal and Torres Strait Islander is optional and the estimated population may be under reported.

**Includes all Aboriginal and Torres Strait Islander peoples who have received a vaccination, not limited to those administered in an ACCHS setting

***Updated weekly.

#ACCHS in the ACT are currently operating as a Commonwealth Vaccine Clinics so not included to avoid double counting

residing in other territories or with missing residential information

Source: Australian Immunisation Register

Data as at:
25 Sep 2021

Commonwealth primary care



Primary care vaccine administration sites

5,476	137	166	3,187
GPs	CVCs	ACCHS	Pharmacies



14,360,235 total vaccine doses
administered primary care settings as at 25 September
+ 110,926 recorded in the last 24 hours

Primary care vaccinations by provider type

	Doses administered	Daily increase	7 day increase
General Practice* includes other Commonwealth	13,674,889	95,937	1,005,732
Pharmacy	685,346	14,989	110,159

NSW
5,797,750
(+53,573 daily increase)

VIC
3,396,468
(+26,942 daily increase)

QLD
2,530,968
(+12,420 daily increase)

WA
1,133,197
(+7,220 daily increase)

TAS
249,687
(+2,140 daily increase)

SA
842,770
(+4,864 daily increase)

ACT
242,278
(+2,902 daily increase)

NT
89,129
(+247 daily increase)

77,988 doses administered to persons
residing in other territories or with
missing residential information

*General practice includes Commonwealth Vaccination Clinics, Aboriginal Community Health Centres, Royal Flying Doctor Service and other Commonwealth vaccination facilities

Source: Australian Immunisation Register

Data as at:
25 Sep 2021

Commonwealth aged care and disability doses administered



966,407

(+ 5,015 last 24 hours)

Total vaccine doses administered in aged care and disability facilities as at 25 September

Number of doses administered as part of the Commonwealth aged and disability care rollout

NSW
451,719
(+1,693 daily increase)

VIC
178,257
(+1,034 daily increase)

QLD
160,362
(+1,714 daily increase)

WA
62,861
(+180 daily increase)

TAS
16,597
(+26 daily increase)

SA
56,201
(+133 daily increase)

ACT
11,402
(+133 daily increase)

NT
5,600
(+37 daily increase)

*Sourced from the Australian Immunisation Register. Includes all persons vaccinated at participating residential aged care, disability and related industry settings.

**State level breakdown indicates the residential location and may not align to the state in which the vaccination occurred.

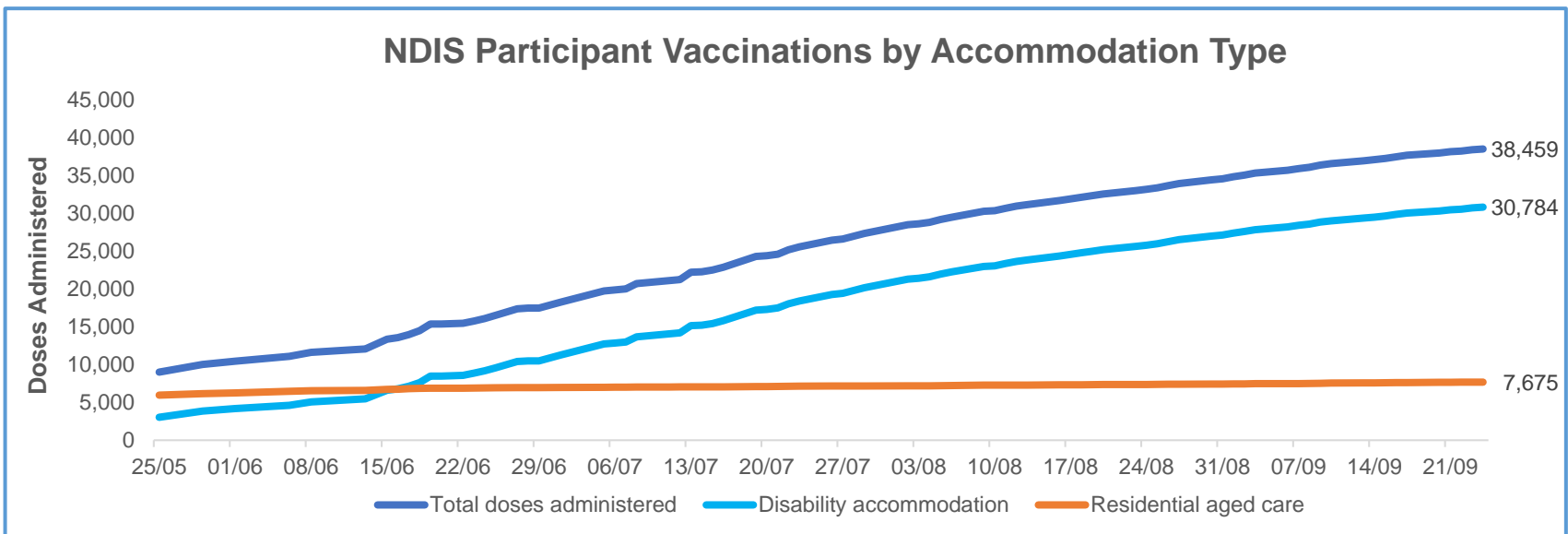
23,408

doses administered to persons residing in other territories or with missing residential information

Data as at:
24 September 2021*

Vaccination rate of people with disability and the disability workforce

Phase 1a – People with disability living in shared accommodation



	Total people with at least one dose	People fully vaccinated	Total number of individuals in cohort	Total doses administered	% People with at least one dose	% People fully vaccinated
NDIS participants living in shared accommodation **	20,432	18,027	27,293	38,459	74.9%	66.0%
NDIS screened workers ***	143,194	112,790	196,947	255,984	72.7%	57.3%

* Updates are available Monday to Friday on participants, and bi-weekly for workers, numbers may be up to four days old.

** Shared accommodation means two or more people with disability living in shared residential accommodation and NDIS participants living in Residential Aged Care accommodation as per the eligibility criteria of Phase 1a.

*** Total number of workers within the NDIS Commission Worker Screening database who have ever been successfully screened and linked to an NDIS registered provider or participant.

Source: Linkage between National Disability Insurance Agency data, NDIS Quality and Safeguards Commission data and the Australian Immunisation Register.



Residential aged care vaccination rollout

Residential aged care facilities status

100%
Commonwealth facilities visited (2,573 planned sites)

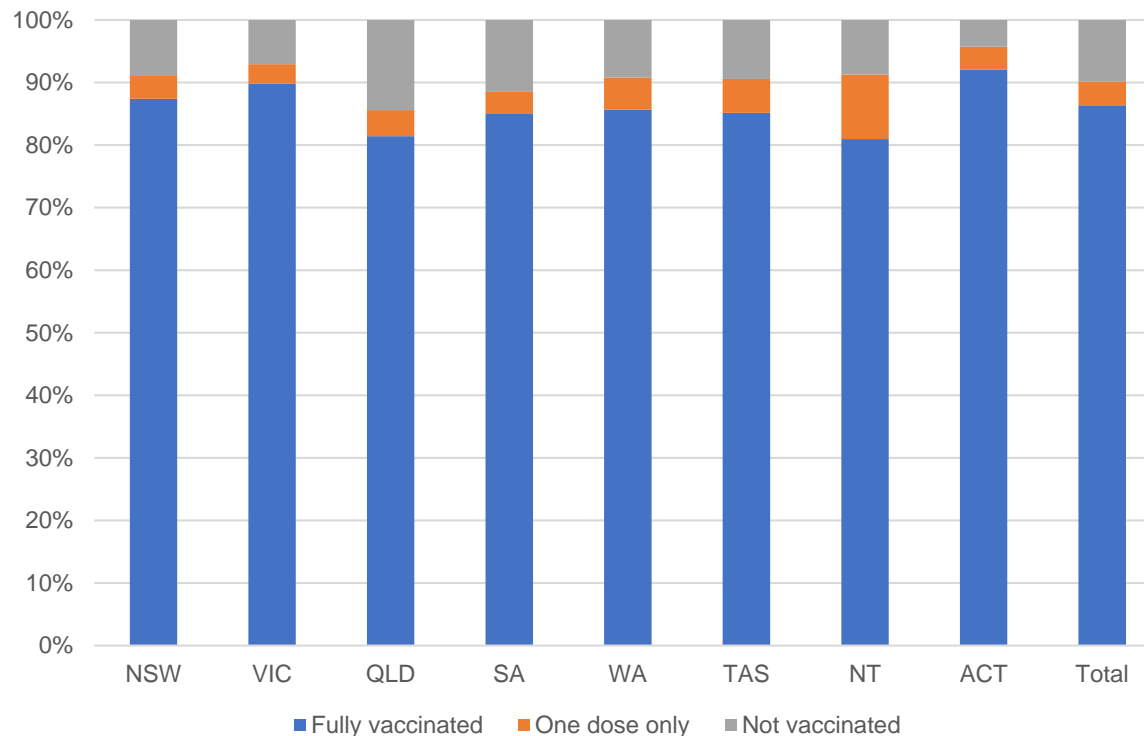
160,956
People fully vaccinated

90.2%
Participation rate

Australia's COVID-19
Vaccine Roadmap

Data as at:
25 September 2021

Aged care resident vaccinations



Aged care worker vaccinations

Jurisdictions	Total workers with at least one dose	Workers fully vaccinated	% Workers with at least one dose	% Workers fully vaccinated
NSW	78,935	67,009	99.0%	84.1%
VIC	70,669	59,590	98.8%	83.3%
QLD	47,532	37,528	99.0%	78.2%
SA	26,469	22,047	99.0%	82.4%
WA	23,178	17,218	99.2%	73.7%
TAS	7,463	6,248	99.5%	83.3%
NT	797	762	99.3%	94.9%
ACT	2,938	2,573	99.5%	87.2%
Total	257,981	212,975	99.0%	81.7%

Source: My Aged Care Portal staff vaccination progress

**Resident vaccination information is reported manually by service providers

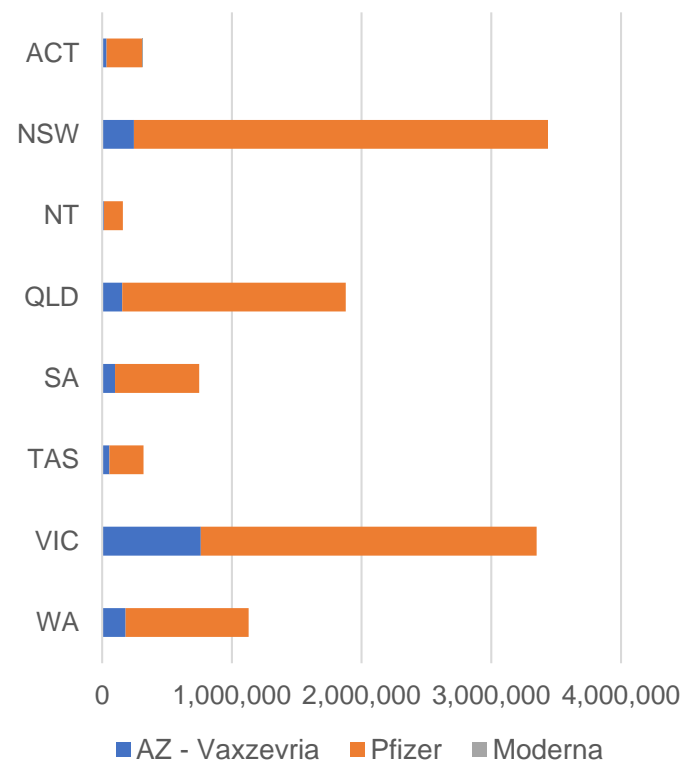
*Status updates are provided by facilities at least once per week. Reporting is updated Monday to Friday to encompass different facility updates being made on different days.

Data is sourced directly from Aged Care Service Providers and is not drawn or closely aligned with data from AIR due to inconsistencies and potential lags in uploading of records.

Data as at:
25 Sep 2021

Jurisdiction administered

Total vaccine doses administered in State and Territory clinics as at 25 September



11,334,319 total vaccine doses administered
in State and Territory clinics as at 25 September
+ **103,432** recorded in the last 24 hours
+ **872,228** recorded in the last 7 days

NSW
3,437,197
(+30,719 daily
increase)

VIC
3,350,353
(+31,047 daily
increase)

QLD
1,878,488
(+20,883 daily
increase)

WA
1,129,888
(+6,946 daily
increase)

TAS
318,336
(+2,461 daily
increase)

SA
748,180
(+6,410 daily
increase)

ACT
312,249
(+4,298 daily
increase)

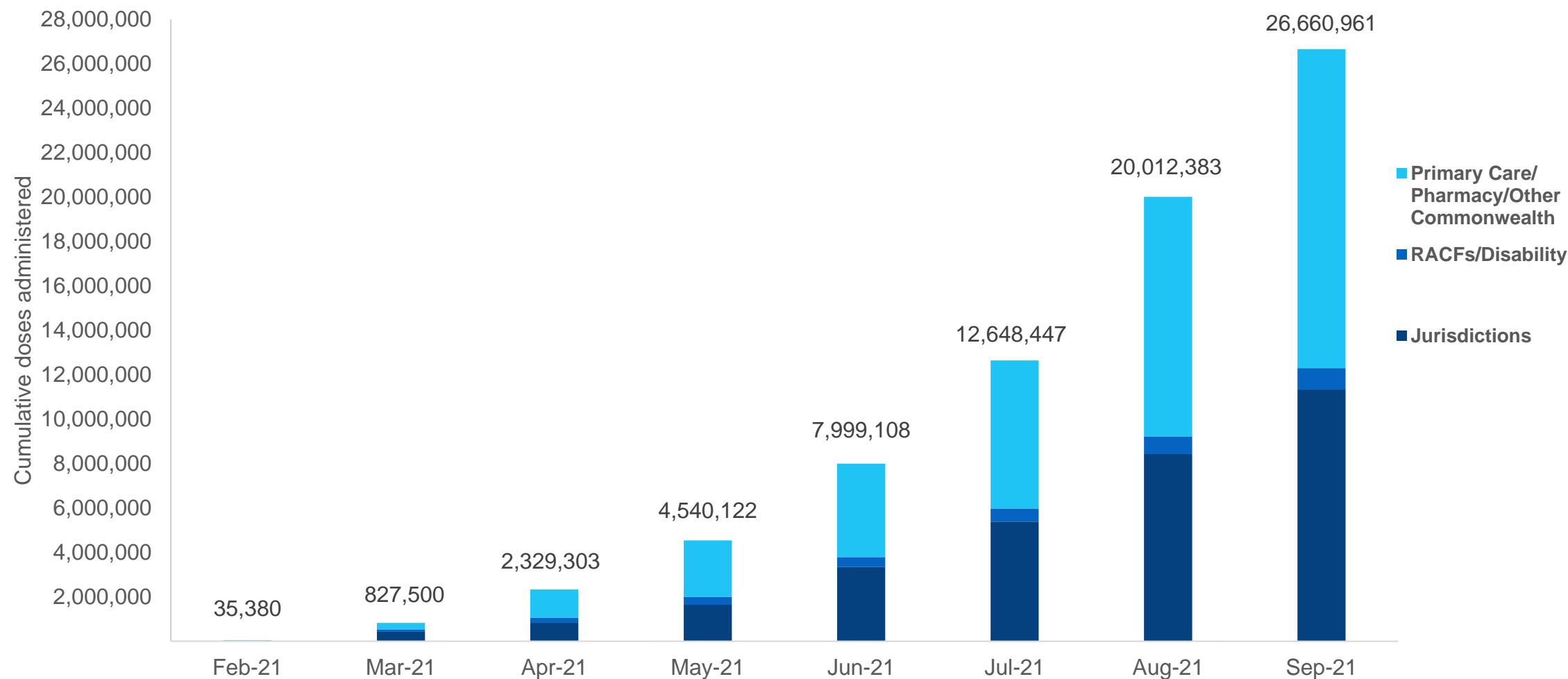
NT
159,628
(+668 daily
increase)

*Sourced from the Australian Immunisation Register and self-reported data. Numbers are calculated as difference in daily cumulative reported numbers to allow for historical corrections in all self-reported data sources.

Cumulative doses administered by channel

Data as at:
25 Sep 2021

Australia's COVID-19
Vaccine Roadmap



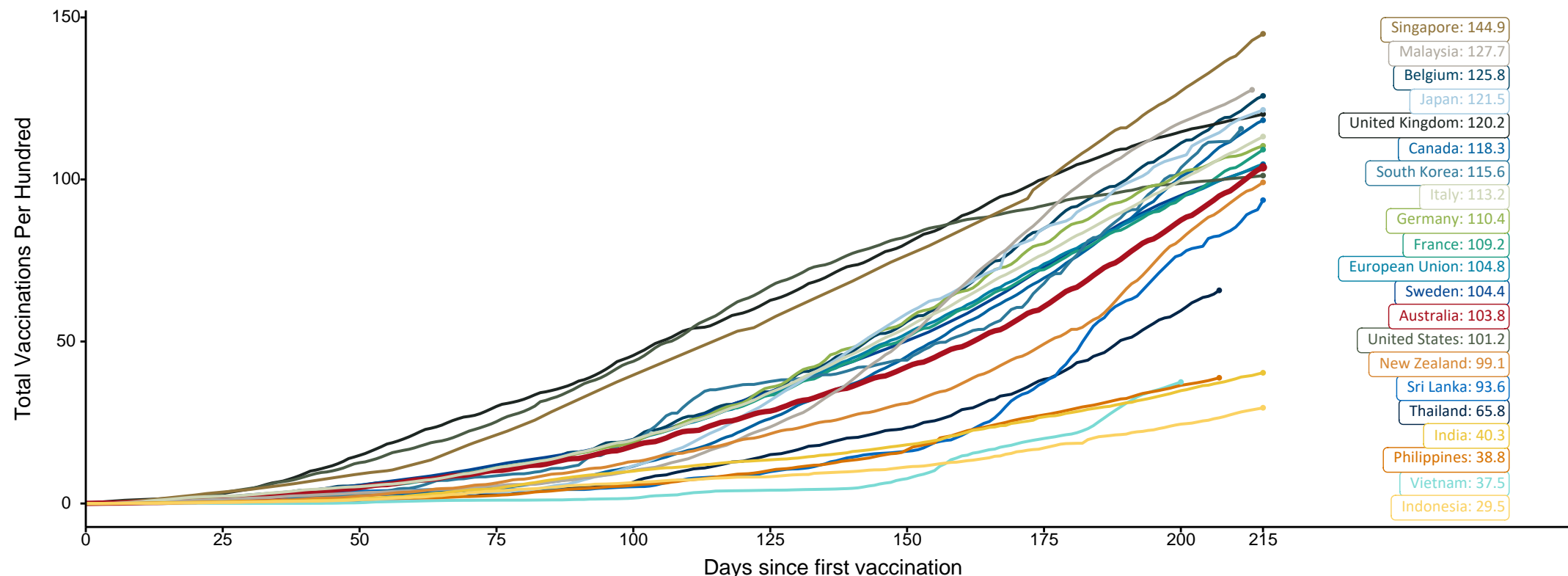
Source: Australian Immunisation Register

Doses at equivalent stages of rollout (Day 215)

Data as at:
25 Sep 2021

The x-axis is truncated at the length of Australia's vaccination program. Countries with intermittent reporting have had their doses per 100 imputed to Australia's current stage of rollout. Israel excluded as it is beyond scale of the graph

Cumulative doses administered (25 Sep): **26,660,961**

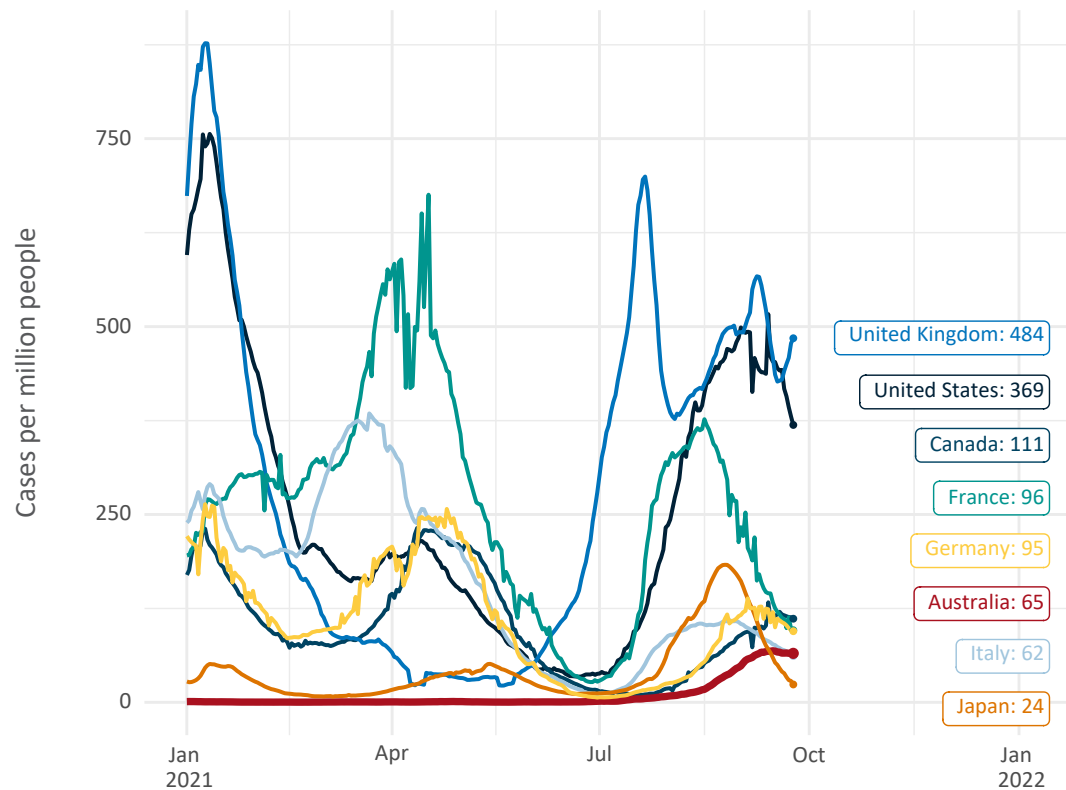


Note: From 15 September 2021, data for Australia includes all doses administered to people 12 and over. Prior to 15 September, data was for 16 and over
Source: Department of Health (Australia), Our World in Data (international)
Latest data: 25 September

International data – COVID-19

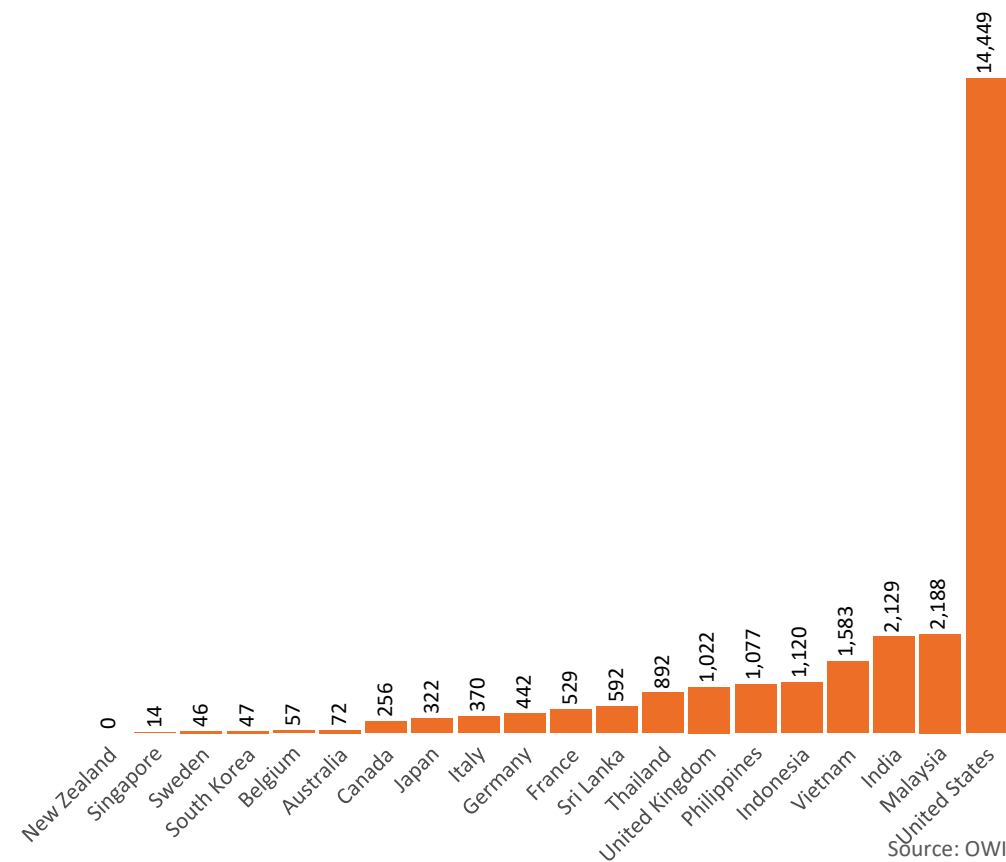
Data as at:
25 Sep 2021

New daily cases per million in 2021, Australia and G7 countries
Smoothed - 7 day average



Source: OWID
Data downloaded: 26 Sep 2021 08:42
Latest data: 24 Sep 2021


COVID-19 deaths in past 7 days - Australia and select countries



Source: OWID
Data downloaded: 26 Sep 2021 08:42
Latest data: 24 Sep 2021

Pandemic Response Payments

Data as at midnight:
25 Sep 2021



2.15 million
People have received at least one COVID Disaster Payment (including ISP200)

\$8.82 billion
Paid Out as at 25 Sep 2021


3.68 million
Claims granted across three different payments



93%
of Claims Received Digitally



COVID Disaster Payment:	3.61 million claims received - 1.99 million individuals paid a total of \$8.55 billion.
\$200 Income Support Payment:	223,000 claims received - 164,000 individuals paid a total of \$171.65 million.
Pandemic Leave Disaster Payment:	71,000 claims received - 61,000 individuals paid a total of \$96.99 million.



THREE PAYMENTS AVAILABLE

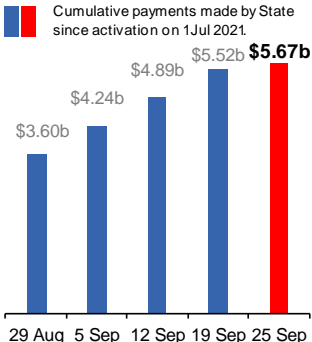
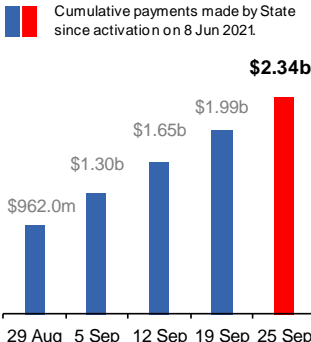
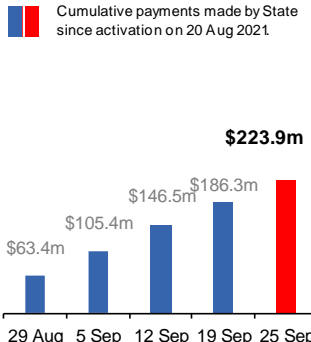
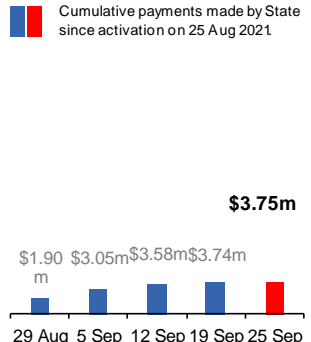
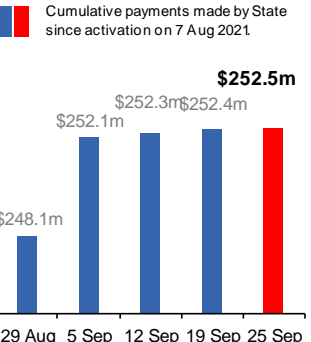
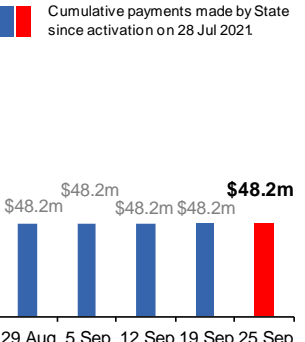
COVID Disaster Payment
assisting during a lockdown event in a Commonwealth hotspot.

Income Support Payment \$200
for income support recipients who lost at least 8 hours of work.

Pandemic Leave Disaster Payment
for those who have to self-isolate, quarantine or care.

For more information visit:
servicesaustralia.gov.au

COVID-19 DISASTER PAYMENTS

<p>New South Wales Active lockdown since 24 Jun</p> <p>1.05m people have received at least one COVID Disaster Payment.</p> <p>\$5.67b paid out as at 25 Sep 2021.</p> <p>\$632m paid in initial and reoccurring payments in the week ending 19 Sep 2021.</p> <p></p>	<p>Victoria Active lockdown (#6) since 6 Aug</p> <p>589,000 people have received at least one COVID Disaster Payment.</p> <p>\$2.34b paid out as at 25 Sep 2021.</p> <p>\$338m paid in initial and reoccurring payments in the week ending 19 Sep 2021.</p> <p></p>	<p>Australian Capital Territory Active lockdown since 12 Aug</p> <p>62,000 people have received at least one COVID Disaster Payment.</p> <p>\$223.9m paid out as at 25 Sep 2021.</p> <p>\$40m paid in initial and reoccurring payments in the week ending 19 Sep 2021.</p> <p></p>	<p>Northern Territory Lockdown from 18 – 20 Jul Claiming period ends 13 Sep</p> <p>5,779 people have received at least one COVID Disaster Payment.</p> <p>\$3.75m paid out as at 25 Sep 2021.</p> <p>\$157,000 paid in initial payments in the week ending 19 Sep 2021.</p> <p></p>	<p>Queensland Lockdown from 31 Jul – 11 Aug Claiming period ended 28 Aug</p> <p>196,000 people have received at least one COVID Disaster Payment.</p> <p>\$252.5m paid out as at 25 Sep 2021.</p> <p>\$87,000 paid in initial and reoccurring payments in the week ending 19 Sep 2021.</p> <p></p>	<p>South Australia Lockdown from 21 – 27 Jul Claiming period ended 17 Aug</p> <p>86,000 people have received at least one COVID Disaster Payment.</p> <p>\$48.2m paid out as at 25 Sep 2021.</p> <p>\$8,000 paid in initial payments in the week ending 19 Sep 2021.</p> <p></p>
--	--	--	---	--	--