



Australian Government
Operation COVID Shield

COVID-19 Vaccine Roll-out

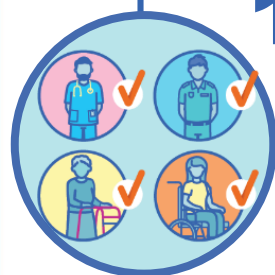
25 September 2021

Data as at:
24 Sep 2021

Total vaccine doses



26,441,588 total vaccine
doses administered nationally as at 24 September
+311,275 recorded in the last 24 hours



15,549,125

People over the age of 16 have
had at least one dose

75.4%

of people over the age of 16
have had at least one dose



10,505,721

People over the age of 16 are
fully vaccinated

50.9%

of people over the age of 16 are
fully vaccinated

NSW
9,579,725
(+140,511 daily
increase)

VIC
6,873,002
(+60,730 daily
increase)

QLD
4,570,657
(+51,406 daily
increase)

WA
2,310,144
(+25,266 daily
increase)

TAS
574,758
(+5,175 daily
increase)

SA
1,632,535
(+17,130 daily
increase)

ACT
637,335
(+8,371 daily
increase)

NT
263,432
(+2,686 daily
increase)

*Administration state breakdown indicates state in which a vaccine was administered

**Overall dose count includes instances of more than two doses per person in a small number of cases.

Source: Australian Immunisation Register

Data as at:
24 Sep 2021

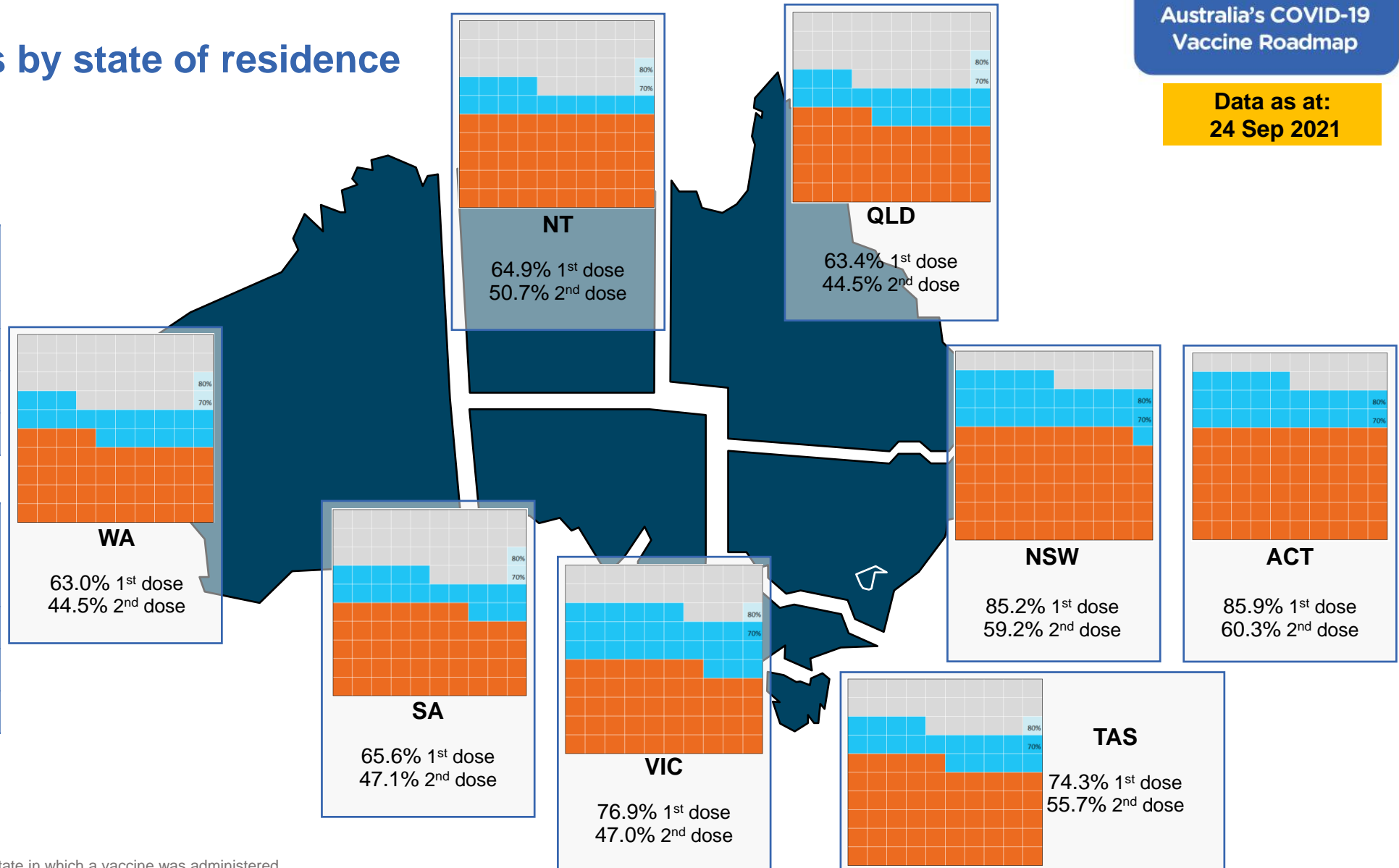
Vaccinations by state of residence

First doses

Age	Today	4 weeks ago	8 weeks ago
16+	75.4%	57.8%	41.2%
50+	87.9%	78.6%	66.4%
70+	93.7%	87.8%	80.6%

Fully vaccinated

Age	Today	4 weeks ago	8 weeks ago
16+	50.9%	34.4%	19.4%
50+	69.0%	50.9%	27.1%
70+	76.8%	62.7%	42.8%



*Residential state may differ from the state in which a vaccine was administered

Commonwealth and Jurisdiction vaccine doses administered

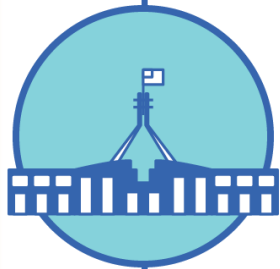
Data as at:
24 Sep 2021



26,441,588 total vaccine
doses administered nationally as at 24 September
+ 311,275 recorded in the last 24 hours



11,230,887
doses administered by state
and territory facilities
+ 133,918
recorded in the last 24 hours



15,210,701
doses administered by
commonwealth facilities
+ 177,357
recorded in the last 24 hours

14,249,309 total vaccine doses
administered in primary care settings
961,392 total vaccine doses
administered in aged care and disability
settings

NSW	Jurisdictions	Commonwealth
Cumulative	3,406,478	6,173,247
Daily increase	43,631	96,880

VIC	Jurisdictions	Commonwealth
Cumulative	3,319,306	3,553,696
Daily increase	38,380	22,350

QLD	Jurisdictions	Commonwealth
Cumulative	1,857,605	2,713,052
Daily increase	22,192	29,214

WA	Jurisdictions	Commonwealth
Cumulative	1,122,942	1,187,202
Daily increase	12,112	13,154

TAS	Jurisdictions	Commonwealth
Cumulative	315,875	258,883
Daily increase	2,999	2,176

SA	Jurisdictions	Commonwealth
Cumulative	741,770	890,765
Daily increase	8,608	8,522

ACT	Jurisdictions	Commonwealth
Cumulative	307,951	329,384
Daily increase	4,374	3,997

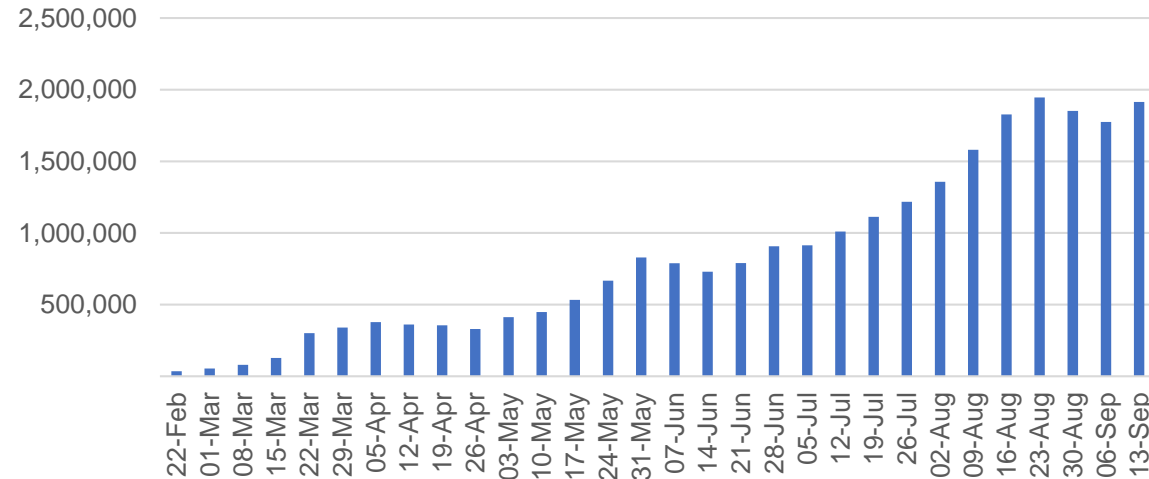
NT	Jurisdictions	Commonwealth
Cumulative	158,960	104,472
Daily increase	1,622	1,064

Vaccine milestone charts

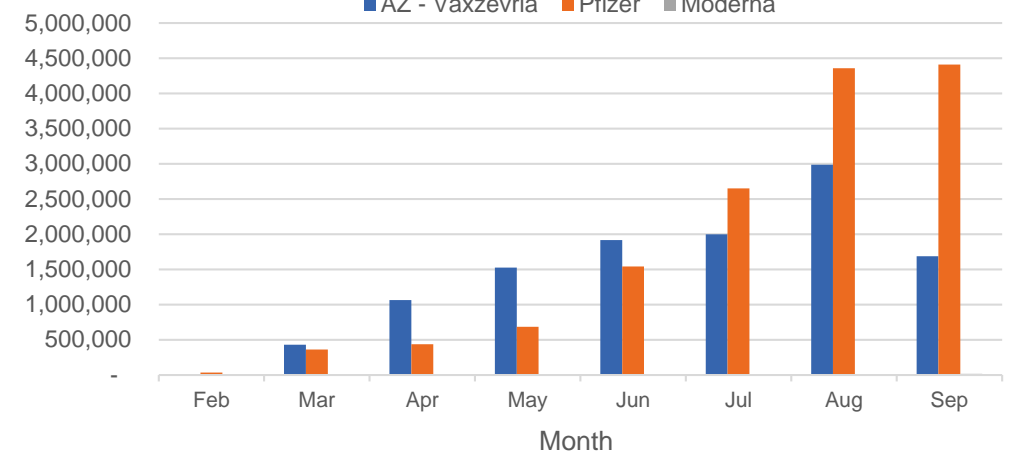
Data as at:
24 Sep 2021

Australia's COVID-19
Vaccine Roadmap

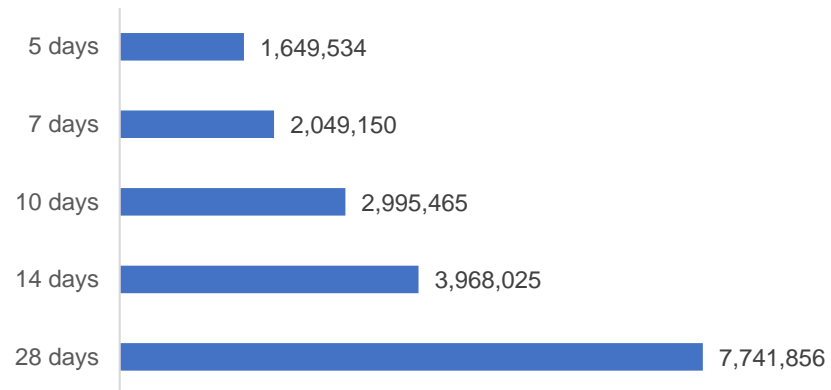
Jabs in arms by week



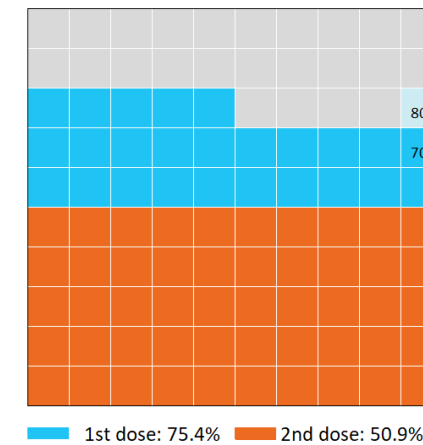
Doses by administration month and vaccine type



Doses reported



Eligible population percentage coverage



*Sourced from the Australian Immunisation Register, 28 day time period includes re-adjustment of 6,895 aged care doses.

*Each square represents 1% of the national population. Squares are filled as milestones are achieved.

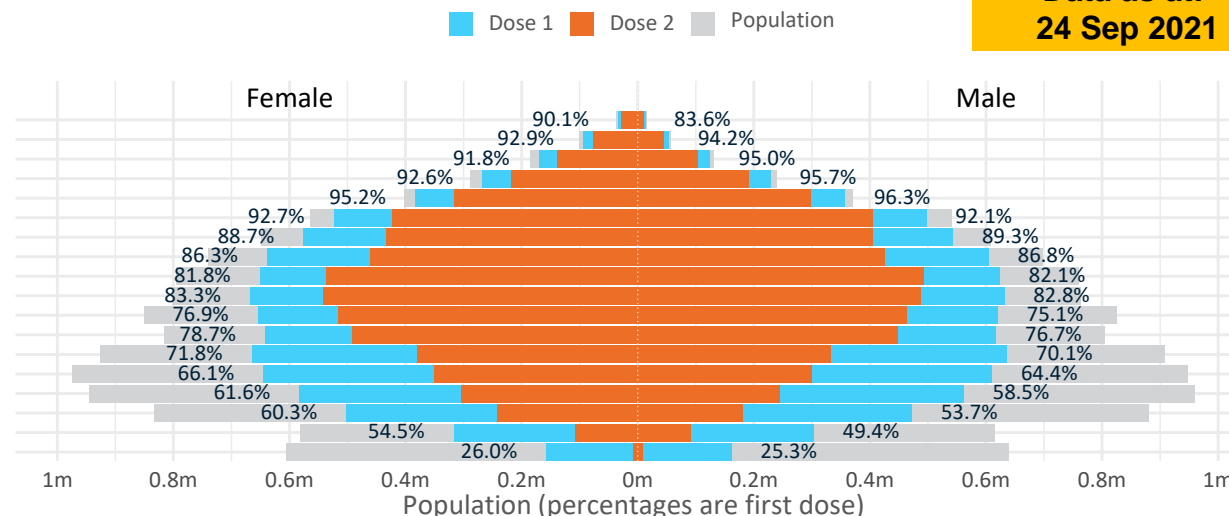
Data as at:
24 Sep 2021

Doses by age and sex

First and second doses by age and sex

	16+	50+	70+	12-15
Dose 1	75.41% (15,549,125 doses / 20,619,959 people)	87.91% (7,691,455 doses / 8,749,703 people)	93.71% (2,750,016 doses / 2,934,706 people)	25.63% (318,804 doses / 1,243,990 people)
Dose 2	50.95% (10,505,721 doses / 20,619,959 people)	69.03% (6,039,550 doses / 8,749,703 people)	76.81% (2,254,014 doses / 2,934,706 people)	1.35% (16,815 doses / 1,243,990 people)

Age	Dose 1	Dose 2
95+	46,750 (88.4%)	38,504 (72.8%)
90-94	148,052 (93.5%)	121,659 (76.8%)
85-89	294,702 (93.2%)	241,193 (76.3%)
80-84	497,028 (94.1%)	410,820 (77.7%)
75-79	741,283 (95.8%)	614,378 (79.4%)
70-74	1,022,201 (92.5%)	827,460 (74.9%)
65-69	1,120,540 (89.1%)	838,412 (66.6%)
60-64	1,244,594 (86.6%)	887,532 (61.8%)
55-59	1,275,845 (82.0%)	1,030,365 (66.2%)
50-54	1,300,460 (83.1%)	1,029,227 (65.8%)
45-49	1,275,818 (76.1%)	981,724 (58.6%)
40-44	1,261,317 (77.8%)	939,525 (58.0%)
35-39	1,305,081 (71.1%)	712,654 (38.8%)
30-34	1,261,784 (65.6%)	653,282 (34.0%)
25-29	1,153,445 (60.5%)	552,387 (29.0%)
20-24	979,537 (57.2%)	426,775 (24.9%)
16-19	620,688 (51.9%)	199,824 (16.7%)
12-15	318,804 (25.6%)	16,815 (1.4%)



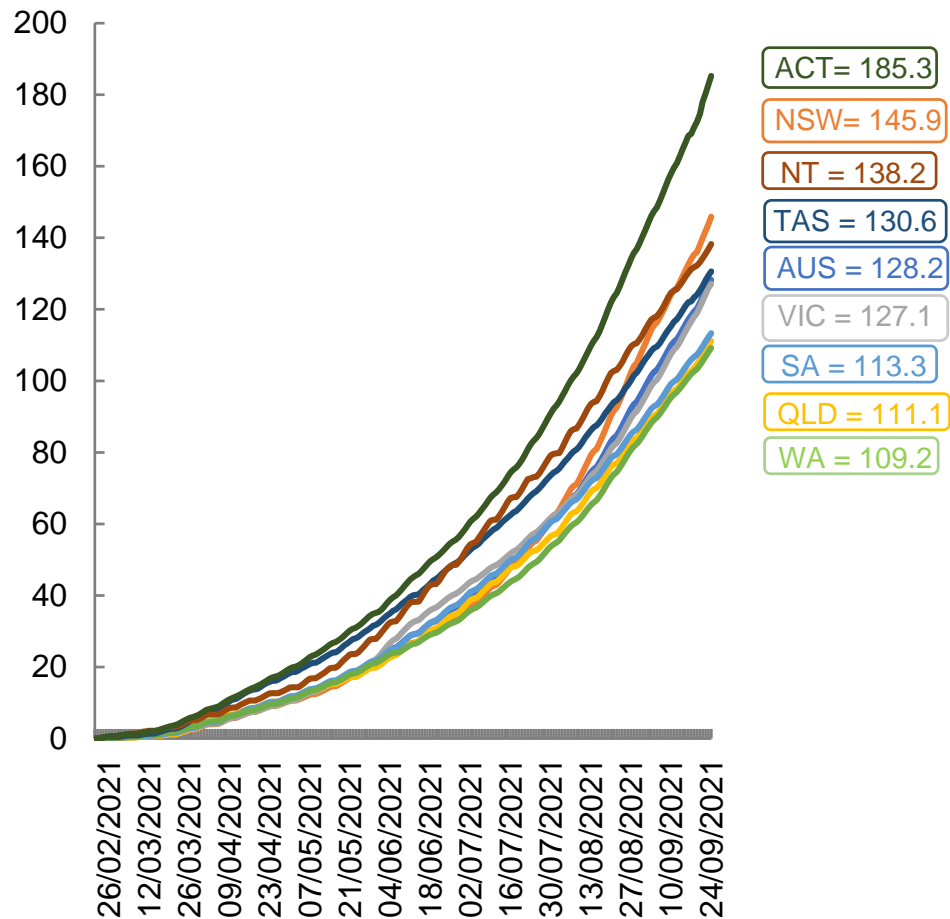
	AUS	ACT	NSW	NT	QLD	SA	TAS	VIC	WA
16 and over - dose 1	15,549,125	295,636	5,592,648	123,675	2,606,865	944,538	326,902	4,158,958	1,332,972
16 and over - dose 2	10,505,721	207,427	3,889,864	96,539	1,830,403	679,086	245,313	2,538,987	940,645
16 and over - population	20,619,959*	344,037	6,565,651	190,571	4,112,707	1,440,400	440,172	5,407,574	2,114,978
16 and over % with dose 1	75.41%	85.93%	85.18%	64.90%	63.39%	65.57%	74.27%	76.91%	63.03%
16 and over % with dose 2	50.95%	60.29%	59.25%	50.66%	44.51%	47.15%	55.73%	46.95%	44.48%
50 and over - dose 1	7,691,455	127,012	2,606,743	47,515	1,442,319	556,591	190,719	1,952,586	720,070
50 and over - dose 2	6,039,550	108,750	2,064,439	38,720	1,108,207	423,815	156,248	1,552,001	556,168
50 and over - population	8,749,703	127,802	2,807,793	62,280	1,758,855	674,384	220,036	2,211,211	885,370
50 and over % with dose 1	87.91%	>95%	92.84%	76.29%	82.00%	82.53%	86.68%	88.30%	81.33%
50 and over % with dose 2	69.03%	85.09%	73.53%	62.17%	63.01%	62.84%	71.01%	70.19%	62.82%
70 and over - dose 1	2,750,016	41,735	927,203	10,200	524,145	217,629	72,150	686,447	250,744
70 and over - dose 2	2,254,014	36,217	768,048	8,376	426,414	170,428	60,609	568,119	201,116
70 and over - population	2,934,706	39,946	962,606	12,343	577,767	240,514	77,155	743,519	280,281
70 and over % with dose 1	93.71%	>95%	>95%	82.64%	90.72%	90.48%	93.51%	92.32%	89.46%
70 and over % with dose 2	76.81%	90.66%	79.79%	67.86%	73.80%	70.86%	78.55%	76.41%	71.76%
12 to 15 - dose 1	318,804	5,437	147,200	3,611	44,383	7,904	2,553	93,951	11,831
12 to 15 - dose 2	16,815	459	8,700	825	3,175	300	314	2,371	530
12 to 15 - population	1,243,990	19,693	390,330	13,060	270,146	82,747	26,308	308,611	132,869
12 to 15 % with dose 1	25.63%	27.61%	37.71%	27.65%	16.43%	9.55%	9.70%	30.44%	8.90%
12 to 15 % with dose 2	1.35%	2.33%	2.23%	6.32%	1.18%	0.36%	1.19%	0.77%	0.40%

*National population will not equal sum of listed jurisdictions due to a small number of people counted in national population residing in some 'other' territories. Sum of state doses will not add to national total as some records are unable to be geocoded to a State or Territory.

Doses sourced from Australian Immunisation Register, population from ABS ERP June 2020

Vaccinations by location

Cumulative total doses administered vs state populations (16+)*

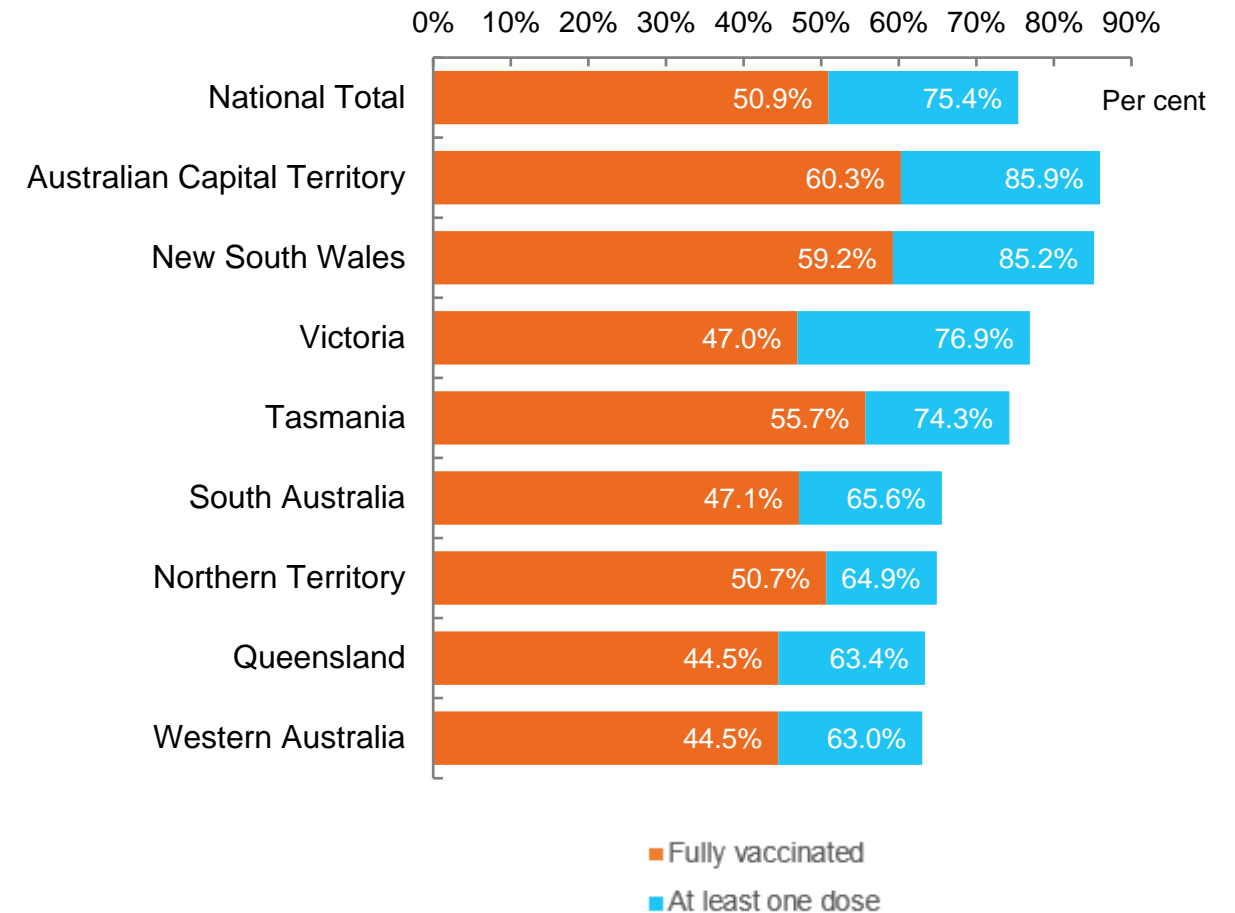


*Not an indication of percentage vaccinated, numbers will exceed 100 due to multiple doses required per person of the population

Data as at:
24 Sep 2021

Australia's COVID-19
Vaccine Roadmap

First and Second Doses by state of residence



Aboriginal and Torres Strait Islander peoples

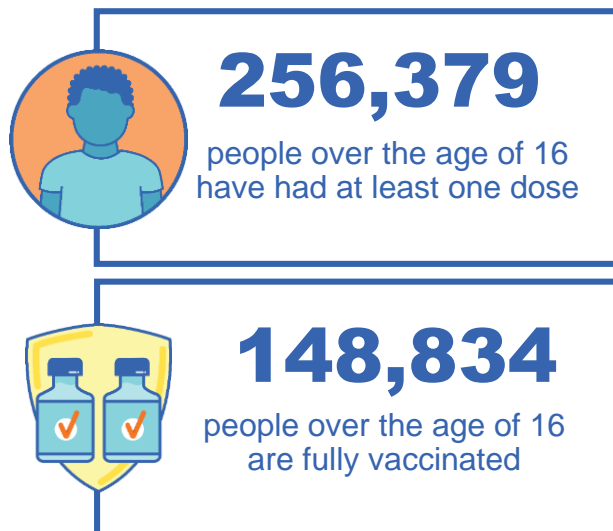
Number of people vaccinated

Data as at:
19 Sep 2021
Updated weekly

Australia's COVID-19
Vaccine Roadmap

165 Aboriginal community controlled health services (ACCHS)

0#	48	25	39	11	3	21	18
ACT	NSW	NT	QLD	SA	TAS	VIC	WA



6,983 people with at least one dose
3,551 people fully vaccinated

*Identifying as Aboriginal and Torres Strait Islander is optional and the estimated population may be under reported.

**Includes all Aboriginal and Torres Strait Islander peoples who have received a vaccination, not limited to those administered in an ACCHS setting

***Updated weekly.

#ACCHS in the ACT are currently operating as a Commonwealth Vaccine Clinics so not included to avoid double counting

residing in other territories or with missing residential information

Source: Australian Immunisation Register

Data as at:
24 Sep 2021

Commonwealth primary care



Primary care vaccine administration sites

5,476	137	166	3,187
GPs	CVCs	ACCHS	Pharmacies



14,249,309 total vaccine doses administered primary care settings as at 24 September
+ 166,425 recorded in the last 24 hours

Primary care vaccinations by provider type

	Doses administered	Daily increase	7 day increase
General Practice* includes other Commonwealth	13,578,952	143,499	1,006,549
Pharmacy	670,357	22,926	102,509



77,370 doses administered to persons residing in other territories or with missing residential information

*General practice includes Commonwealth Vaccination Clinics, Aboriginal Community Health Centres, Royal Flying Doctor Service and other Commonwealth vaccination facilities

Source: Australian Immunisation Register

Data as at:
24 Sep 2021

Commonwealth aged care and disability doses administered



961,392

(+ 10,932 last 24 hours)

Total vaccine doses administered in aged care and disability facilities as at 24 September

Number of doses administered as part of the Commonwealth aged and disability care rollout

NSW
450,026
(+7,638 daily increase)

VIC
177,223
(+812 daily increase)

QLD
158,648
(+1,771 daily increase)

WA
62,681
(+220 daily increase)

TAS
16,571
(+41 daily increase)

SA
56,068
(+189 daily increase)

ACT
11,269
(+63 daily increase)

NT
5,563
(+35 daily increase)

*Sourced from the Australian Immunisation Register. Includes all persons vaccinated at participating residential aged care, disability and related industry settings.

**State level breakdown indicates the residential location and may not align to the state in which the vaccination occurred.

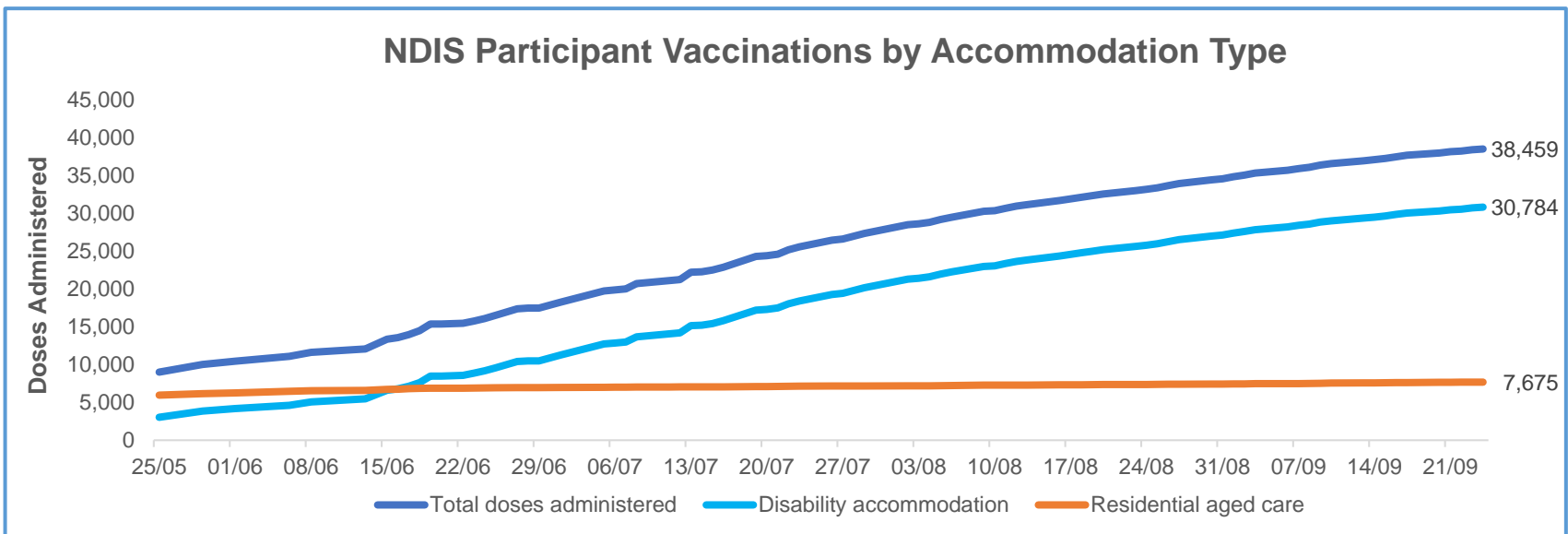
23,343

doses administered to persons residing in other territories or with missing residential information

Data as at:
24 September 2021*

Vaccination rate of people with disability and the disability workforce

Phase 1a – People with disability living in shared accommodation



	Total people with at least one dose	People fully vaccinated	Total number of individuals in cohort	Total doses administered	% People with at least one dose	% People fully vaccinated
NDIS participants living in shared accommodation **	20,432	18,027	27,293	38,459	74.9%	66.0%
NDIS screened workers ***	143,194	112,790	196,947	255,984	72.7%	57.3%

* Updates are available Monday to Friday on participants, and bi-weekly for workers, numbers may be up to four days old.

** Shared accommodation means two or more people with disability living in shared residential accommodation and NDIS participants living in Residential Aged Care accommodation as per the eligibility criteria of Phase 1a.

*** Total number of workers within the NDIS Commission Worker Screening database who have ever been successfully screened and linked to an NDIS registered provider or participant.

Source: Linkage between National Disability Insurance Agency data, NDIS Quality and Safeguards Commission data and the Australian Immunisation Register.



Residential aged care vaccination rollout

Residential aged care facilities status

100% Commonwealth facilities visited (2,573 planned sites)

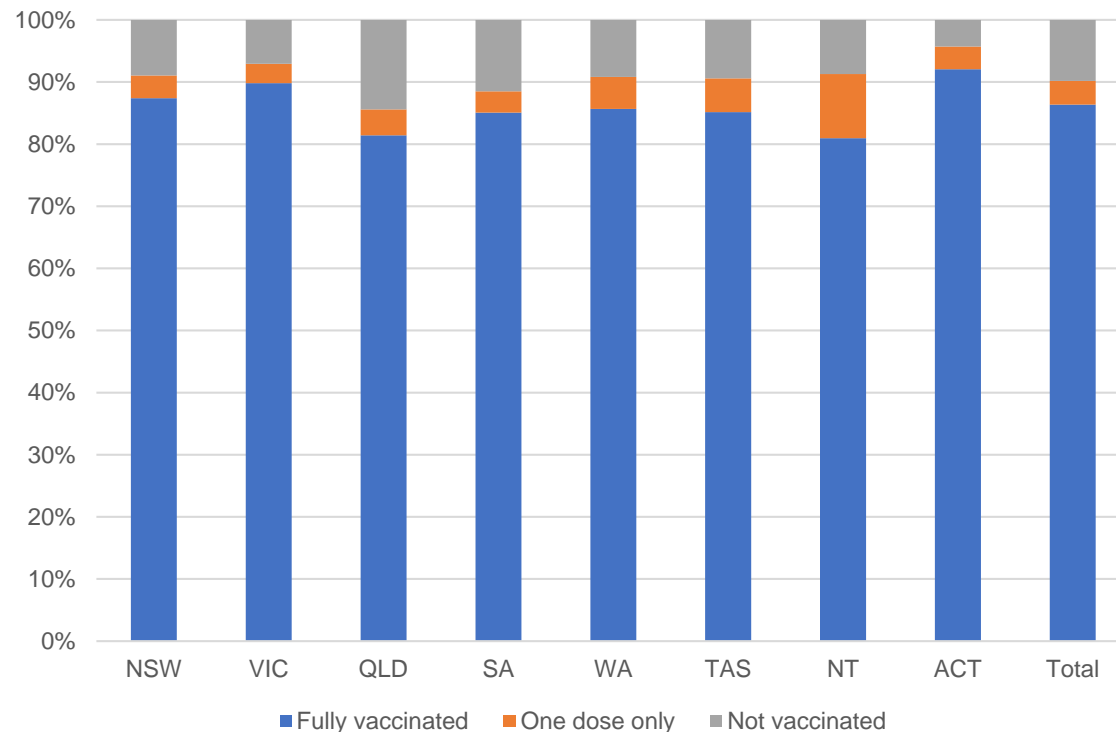
160,955 People fully vaccinated

90.2% Participation rate

Australia's COVID-19 Vaccine Roadmap

Data as at:
24 September 2021

Aged care resident vaccinations



Aged care worker vaccinations

Jurisdictions	Total workers with at least one dose	Workers fully vaccinated	% Workers with at least one dose	% Workers fully vaccinated
NSW	78,935	67,009	99.0%	84.1%
VIC	70,669	59,590	98.8%	83.3%
QLD	47,532	37,528	99.0%	78.2%
SA	26,469	22,047	99.0%	82.4%
WA	23,178	17,218	99.2%	73.7%
TAS	7,463	6,248	99.5%	83.3%
NT	797	762	99.3%	94.9%
ACT	2,938	2,573	99.5%	87.2%
Total	257,981	212,975	99.0%	81.7%

Source: My Aged Care Portal staff vaccination progress

**Resident vaccination information is reported manually by service providers

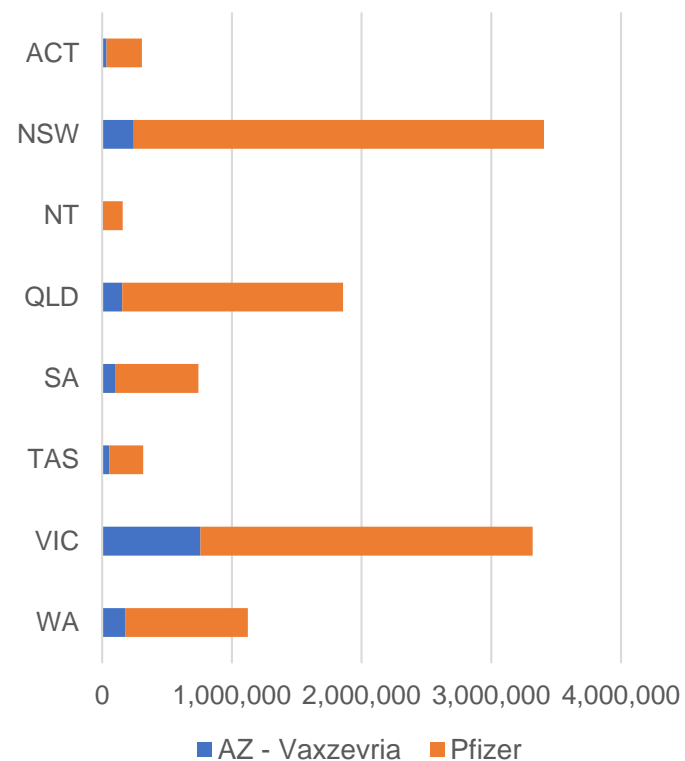
*Status updates are provided by facilities at least once per week. Reporting is updated Monday to Friday to encompass different facility updates being made on different days.

Data is sourced directly from Aged Care Service Providers and is not drawn or closely aligned with data from AIR due to inconsistencies and potential lags in uploading of records.

Data as at:
24 Sep 2021

Jurisdiction administered

Total vaccine doses administered in State and Territory clinics as at 24 September



11,230,887 total vaccine doses administered
in State and Territory clinics as at 24 September
+ **133,918** recorded in the last 24 hours
+ **885,526** recorded in the last 7 days

NSW
3,406,478
(+43,631 daily increase)

VIC
3,319,306
(+38,380 daily increase)

QLD
1,857,605
(+22,192 daily increase)

WA
1,122,942
(+12,112 daily increase)

TAS
315,875
(+2,999 daily increase)

SA
741,770
(+8,608 daily increase)

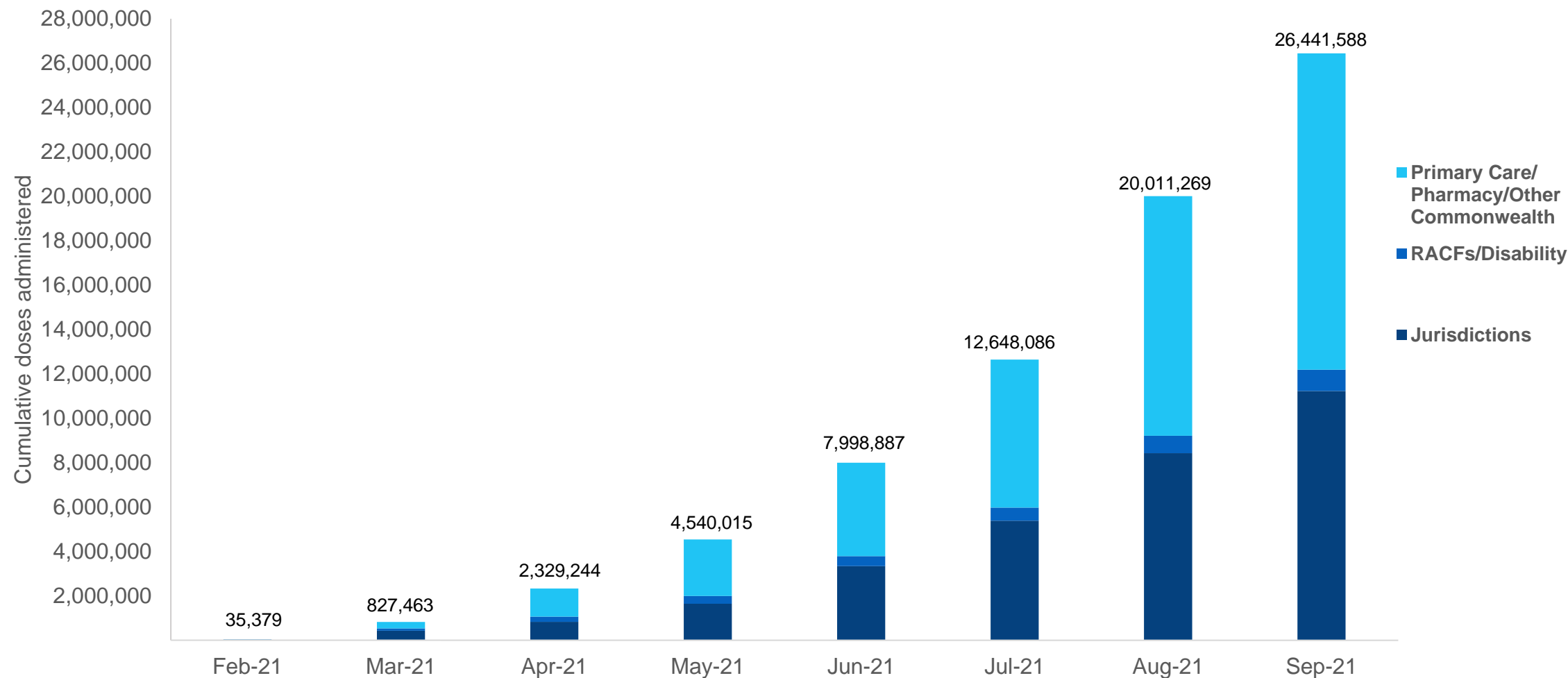
ACT
307,951
(+4,374 daily increase)

NT
158,960
(+1,622 daily increase)

*Sourced from the Australian Immunisation Register and self-reported data. Numbers are calculated as difference in daily cumulative reported numbers to allow for historical corrections in all self-reported data sources.

Cumulative doses administered by channel

Data as at:
24 Sep 2021



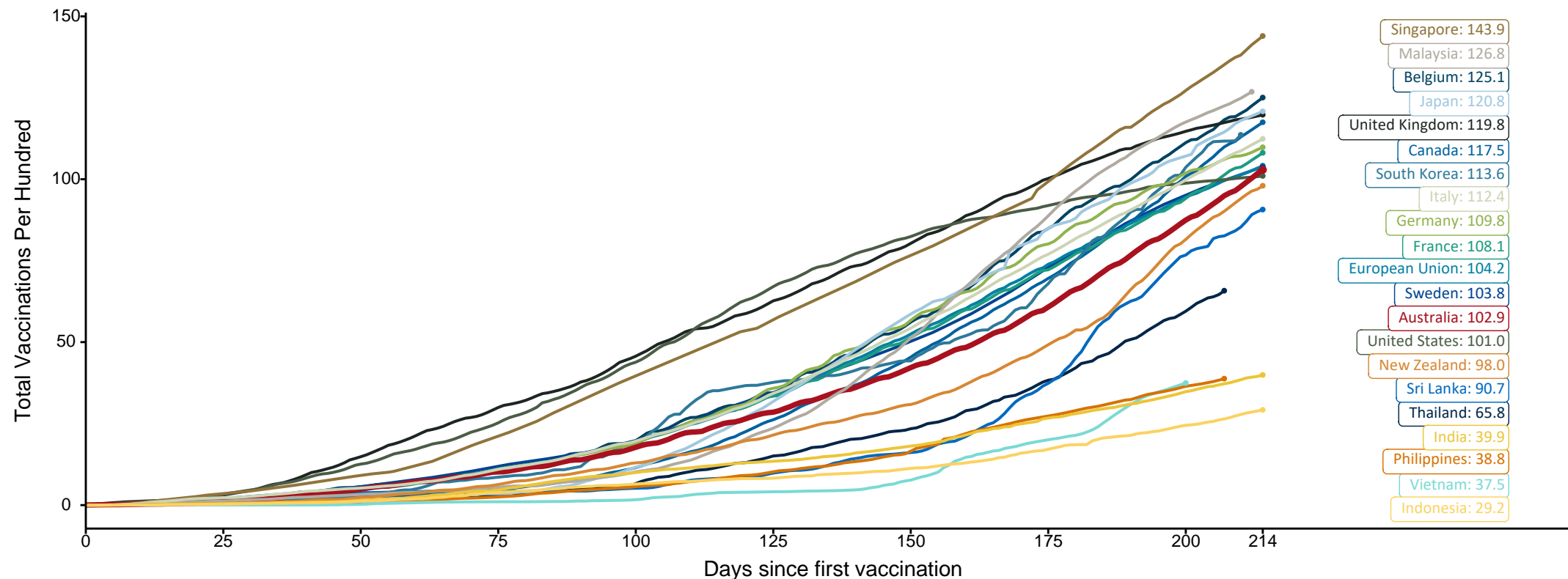
Source: Australian Immunisation Register

Doses at equivalent stages of rollout (Day 214)

Data as at:
24 Sep 2021

The x-axis is truncated at the length of Australia's vaccination program. Countries with intermittent reporting have had their doses per 100 imputed to Australia's current stage of rollout. Israel excluded as it is beyond scale of the graph

Cumulative doses administered (24 Sep): **26,441,588**

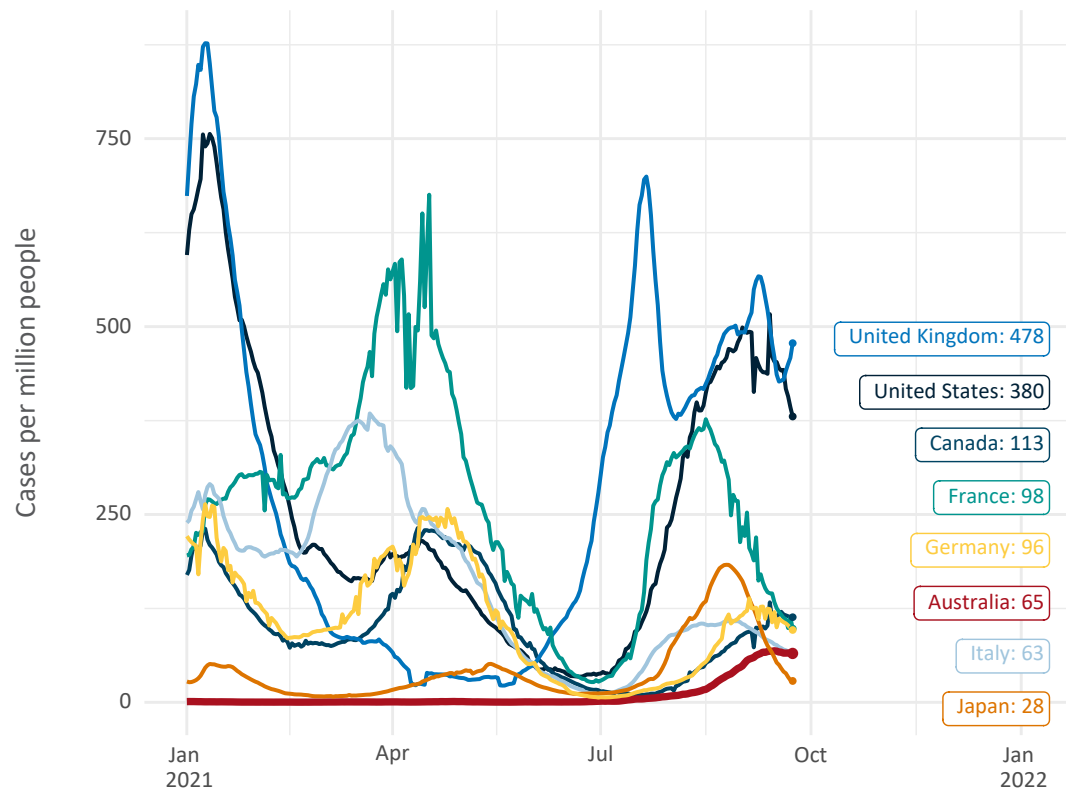


Note: From 15 September 2021, data for Australia includes all doses administered to people 12 and over. Prior to 15 September, data was for 16 and over
Source: Department of Health (Australia), Our World in Data (international)
Latest data: 24 September

International data – COVID-19

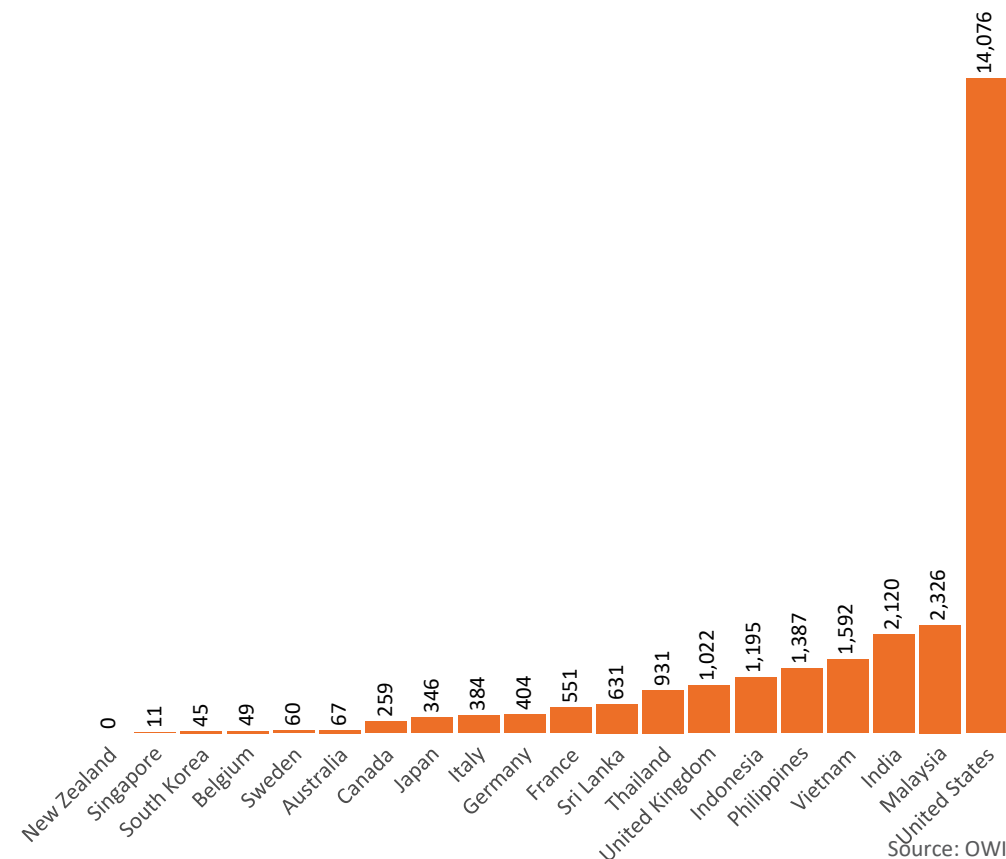
Data as at:
24 Sep 2021

New daily cases per million in 2021, Australia and G7 countries
Smoothed - 7 day average



Source: OWID
Data downloaded: 25 Sep 2021 11:46
Latest data: 23 Sep 2021

COVID-19 deaths in past 7 days - Australia and select countries



Source: OWID
Data downloaded: 25 Sep 2021 11:46
Latest data: 23 Sep 2021

Pandemic Response Payments

Australia's COVID-19
Vaccine Roadmap

Data as at midnight:
24 Sep 2021



2.14 million

People have received at least one COVID
Disaster Payment (including ISP200)

\$8.79 billion

Paid Out as at 24 Sep 2021

3.66 million

Claims granted across
three different payments



93%

of Claims
Received Digitally



COVID Disaster Payment:

3.59 million claims received - 1.98 million individuals paid a total of \$8.53 billion.

\$200 Income Support Payment:

222,000 claims received - 163,000 individuals paid a total of \$171.06 million.

Pandemic Leave Disaster Payment:

71,000 claims received - 61,000 individuals paid a total of \$96.26 million.



**THREE
PAYMENTS
AVAILABLE**

COVID Disaster Payment

assisting during a lockdown
event in a Commonwealth
hotspot.

Income Support Payment \$200

for income support
recipients who lost at
least 8 hours of work.

Pandemic Leave Disaster Payment

for those who have
to self-isolate,
quarantine or care.

For more information visit:
servicesaustralia.gov.au

COVID-19 DISASTER PAYMENTS

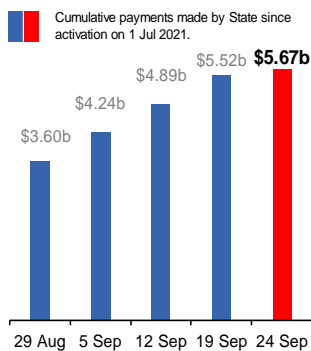
New South Wales

Active lockdown since 24 Jun

**1.05m people have
received at least one
COVID Disaster Payment.**

**\$5.67b paid out as at
24 Sep 2021.**

**\$632m paid in initial and
reoccurring payments in the
week ending 19 Sep 2021.**



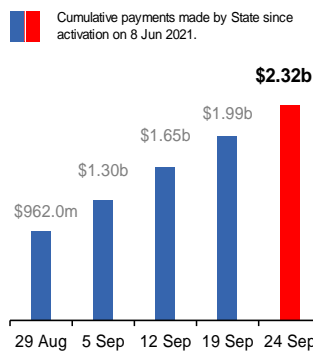
Victoria

Active lockdown (#6) since 6 Aug

**578,000 people have
received at least one
COVID Disaster Payment.**

**\$2.32b paid out as at
24 Sep 2021.**

**\$338m paid in initial and
reoccurring payments in the
week ending 19 Sep 2021.**



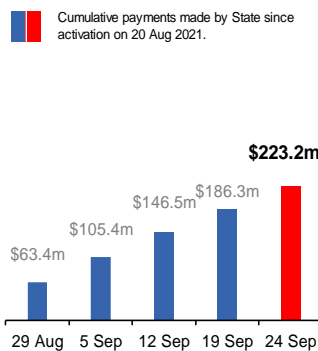
Australian Capital Territory

Active lockdown since 12 Aug

**62,000 people have
received at least one
COVID Disaster Payment.**

**\$223.2m paid out as at
24 Sep 2021.**

**\$40m paid in initial and
reoccurring payments in the
week ending 19 Sep 2021.**



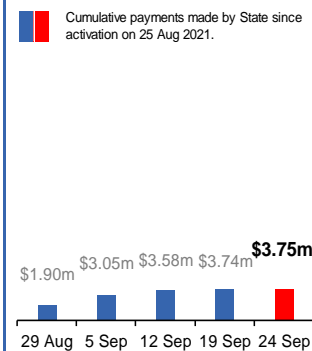
Northern Territory

Lockdown from 18 – 20 Jul
Claiming period ends 13 Sep

**5,779 people have
received at least one
COVID Disaster Payment.**

**\$3.75m paid out as at
24 Sep 2021.**

**\$157,000 paid in initial
payments in the week
ending 19 Sep 2021.**



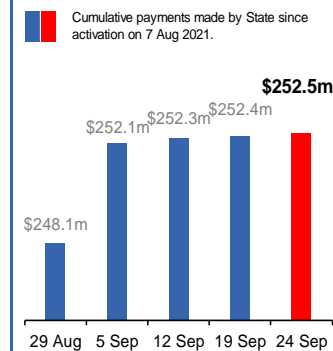
Queensland

Lockdown from 31 Jul – 11 Aug
Claiming period ended 28 Aug

**196,000 people have
received at least one
COVID Disaster Payment.**

**\$252.5m paid out as at
24 Sep 2021.**

**\$87,000 paid in initial
and reoccurring payments in the
week ending 19 Sep 2021.**



South Australia

Lockdown from 21 – 27 Jul
Claiming period ended 17 Aug

**86,000 people have
received at least one
COVID Disaster Payment.**

**\$48.2m paid out as at
24 Sep 2021.**

**\$8,000 paid in initial
payments in the week
ending 19 Sep 2021.**

