



**Australian Government**  
**Operation COVID Shield**

# COVID-19 Vaccine Roll-out

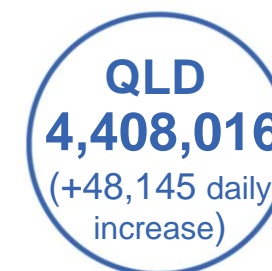
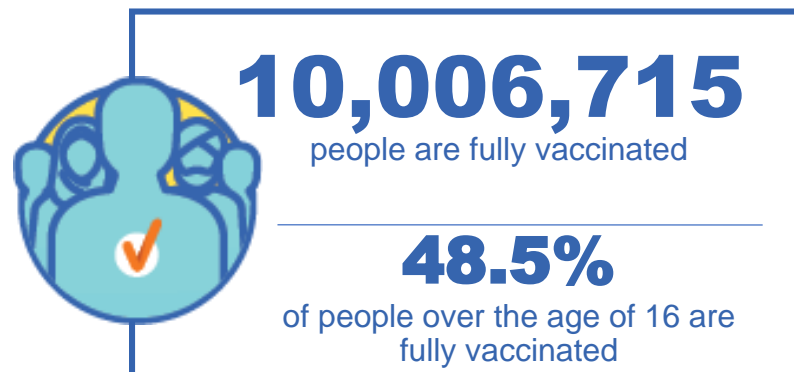
22 September 2021

Data as at:  
21 Sep 2021

## Total vaccine doses



**25,445,232** total vaccine  
doses administered nationally as at 21 September  
**+332,010** recorded in the last 24 hours



\*Administration state breakdown indicates state in which a vaccine was administered

\*\*Overall dose count includes instances of more than two doses per person in a small number of cases.

Source: Australian Immunisation Register

Data as at:  
21 Sep 2021

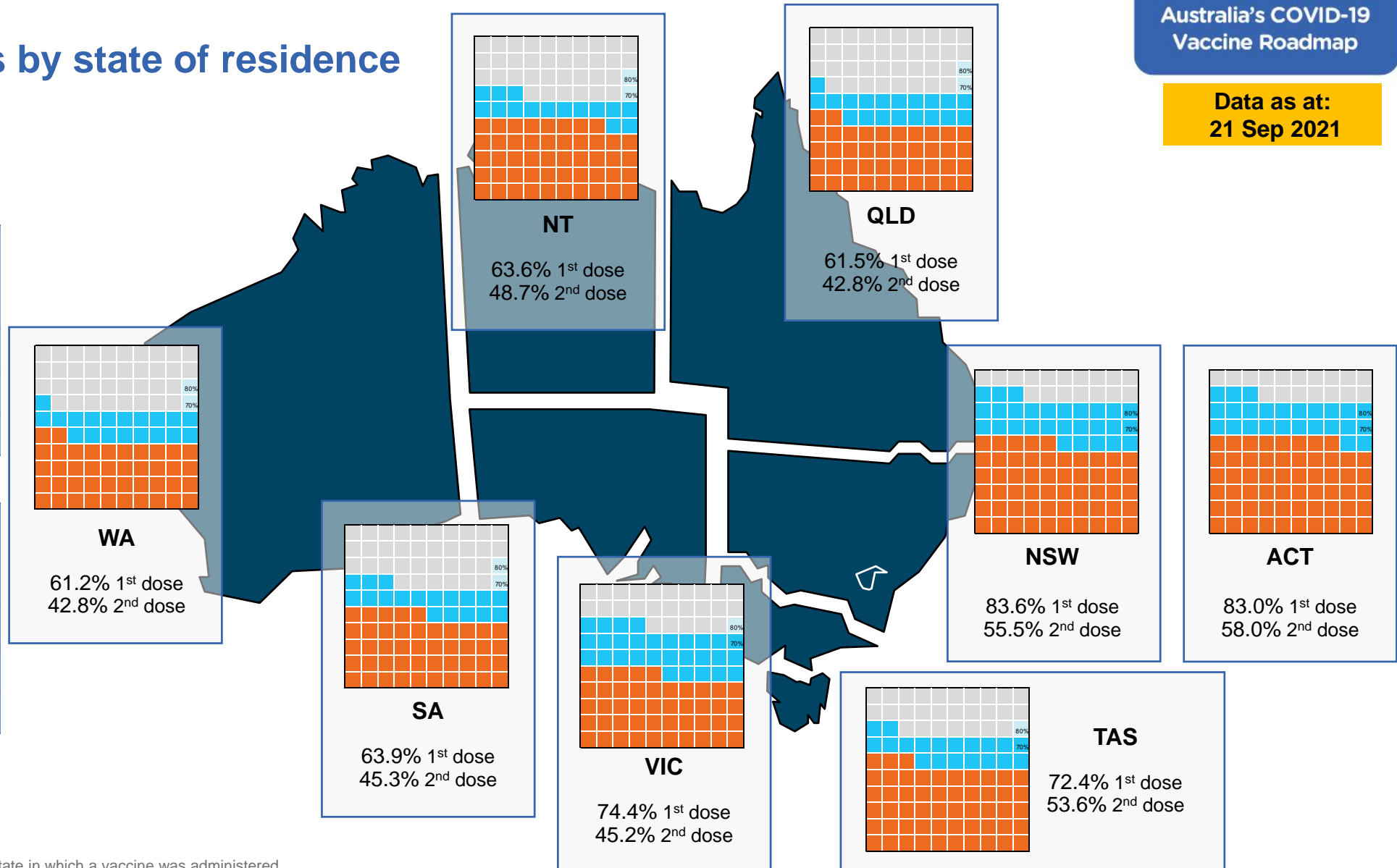
## Vaccinations by state of residence

### First doses

Age	Today	4 weeks ago	8 weeks ago
16+	73.4%	55.2%	39.7%
50+	86.9%	77.0%	64.8%
70+	93.0%	86.8%	79.6%

### Fully vaccinated

Age	Today	4 weeks ago	8 weeks ago
16+	48.5%	32.2%	17.8%
50+	67.1%	47.4%	24.5%
70+	75.2%	60.0%	39.7%



\*Residential state may differ from the state in which a vaccine was administered

## Commonwealth and Jurisdiction vaccine doses administered

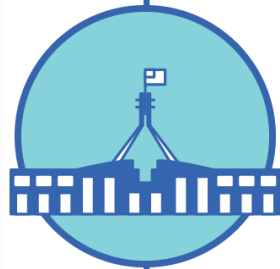
Data as at:  
21 Sep 2021



**25,445,232** total vaccine  
doses administered nationally as at 21 September  
**+ 332,010** recorded in the last 24 hours



**10,833,547**  
doses administered by state  
and territory facilities  
**+ 133,136**  
recorded in the last 24 hours



**14,611,685**  
doses administered by  
commonwealth facilities  
**+ 198,874**  
recorded in the last 24 hours  
**13,677,534** total vaccine doses  
administered in primary care settings  
**934,151** total vaccine doses  
administered in aged care and disability  
settings

NSW	Jurisdictions	Commonwealth
Cumulative	3,297,040	5,889,831
Daily increase	37,130	92,374

VIC	Jurisdictions	Commonwealth
Cumulative	3,196,724	3,417,372
Daily increase	42,168	50,356

QLD	Jurisdictions	Commonwealth
Cumulative	1,787,021	2,620,995
Daily increase	19,979	28,166

WA	Jurisdictions	Commonwealth
Cumulative	1,083,997	1,148,713
Daily increase	13,474	11,771

TAS	Jurisdictions	Commonwealth
Cumulative	305,394	251,152
Daily increase	3,309	1,871

SA	Jurisdictions	Commonwealth
Cumulative	715,341	863,539
Daily increase	9,028	8,532

ACT	Jurisdictions	Commonwealth
Cumulative	293,774	318,501
Daily increase	6,823	4,965

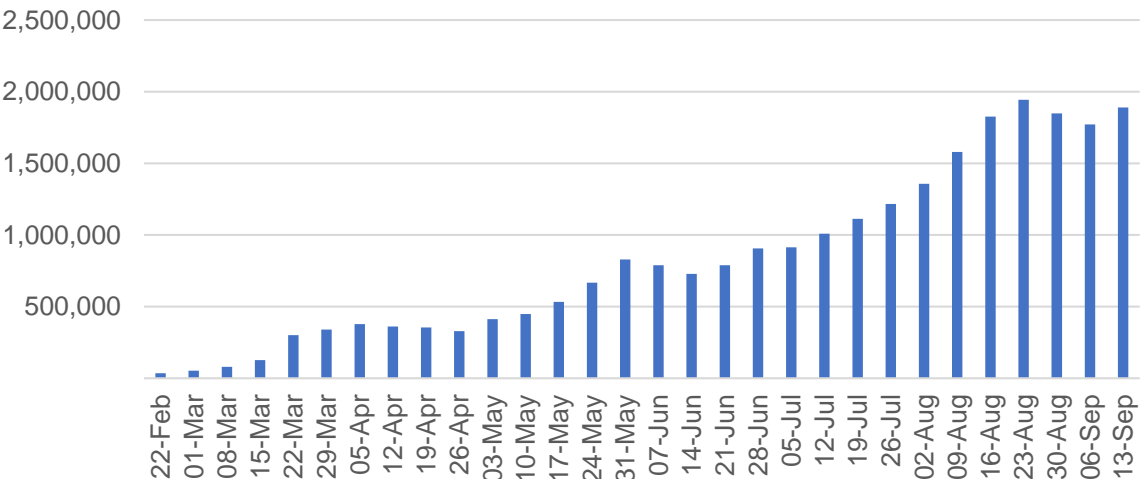
NT	Jurisdictions	Commonwealth
Cumulative	154,256	101,582
Daily increase	1,225	839

# Vaccine milestone charts

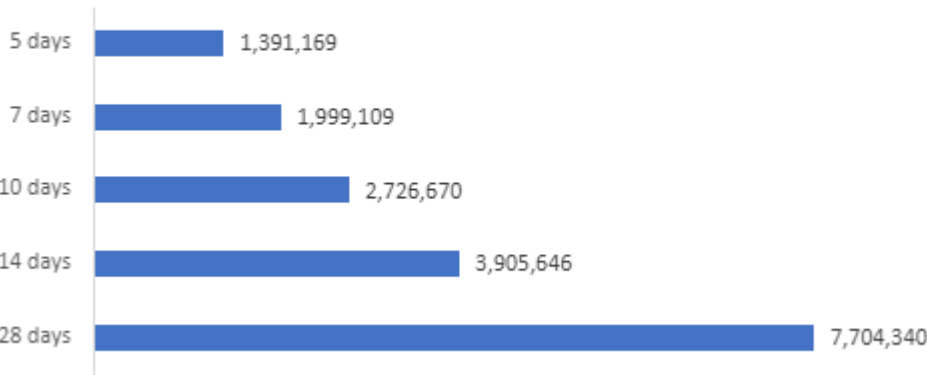
Data as at:  
21 Sep 2021

Australia's COVID-19  
Vaccine Roadmap

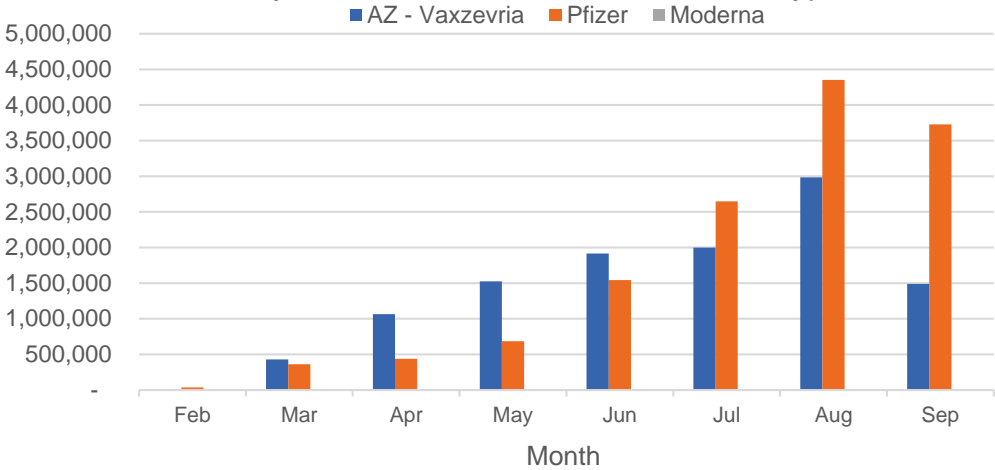
Jabs in arms by week



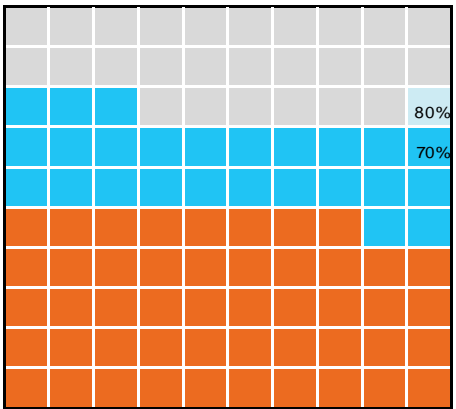
Doses reported



Doses by administration month and vaccine type



Eligible population percentage coverage



1st dose: 73.4% 2nd dose: 48.5%  
\*Each square represents 1% of the national population.  
Squares are filled as milestones are achieved.

\*Sourced from the Australian Immunisation Register. Please note last 28 days includes aged care readjustment of 6,895 doses.

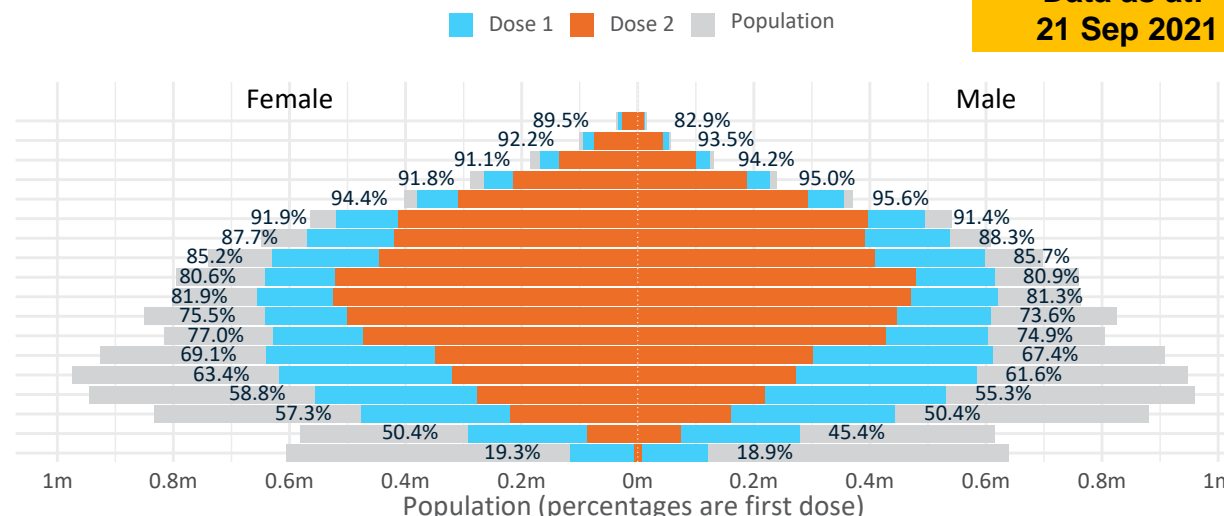
# Doses by age and sex

First and second doses by age and sex

Australia's COVID-19  
Vaccine Roadmap

Data as at:  
21 Sep 2021

Age	Dose 1	Dose 2
95+	46,402 (87.7%)	37,904 (71.6%)
90-94	146,922 (92.7%)	119,460 (75.4%)
85-89	292,470 (92.5%)	236,462 (74.8%)
80-84	493,091 (93.3%)	402,466 (76.2%)
75-79	735,362 (95.0%)	601,812 (77.8%)
70-74	1,014,034 (91.8%)	809,651 (73.3%)
65-69	1,108,148 (88.1%)	811,942 (64.5%)
60-64	1,228,585 (85.5%)	855,047 (59.5%)
55-59	1,257,318 (80.8%)	1,000,870 (64.3%)
50-54	1,277,505 (81.7%)	996,737 (63.7%)
45-49	1,251,007 (74.6%)	946,613 (56.5%)
40-44	1,232,598 (76.1%)	901,185 (55.6%)
35-39	1,255,778 (68.4%)	651,949 (35.5%)
30-34	1,208,113 (62.8%)	594,187 (30.9%)
25-29	1,095,920 (57.5%)	499,014 (26.2%)
20-24	925,519 (54.1%)	380,712 (22.2%)
16-19	572,116 (47.8%)	160,704 (13.4%)
12-15	237,041 (19.1%)	11,992 (1.0%)



	AUS	ACT	NSW	NT	QLD	SA	TAS	VIC	WA
16 and over - dose 1	15,140,888	285,541	5,486,424	121,175	2,530,665	920,025	318,739	4,025,171	1,294,751
16 and over - dose 2	10,006,715	199,429	3,640,998	92,836	1,759,460	652,406	235,761	2,446,549	906,118
16 and over - population	20,619,959*	344,037	6,565,651	190,571	4,112,707	1,440,400	440,172	5,407,574	2,114,978
16 and over % with dose 1	73.43%	83.00%	83.56%	63.59%	61.53%	63.87%	72.41%	74.44%	61.22%
16 and over % with dose 2	48.53%	57.97%	55.46%	48.71%	42.78%	45.29%	53.56%	45.24%	42.84%
50 and over - dose 1	7,599,837	126,160	2,581,534	46,960	1,423,698	548,972	188,454	1,929,277	707,640
50 and over - dose 2	5,872,351	106,521	1,991,630	37,589	1,077,898	411,384	152,141	1,521,831	543,029
50 and over - population	8,749,703	127,802	2,807,793	62,280	1,758,855	674,384	220,036	2,211,211	885,370
50 and over % with dose 1	86.86%	>95%	91.94%	75.40%	80.94%	81.40%	85.65%	87.25%	79.93%
50 and over % with dose 2	67.11%	83.35%	70.93%	60.35%	61.28%	61.00%	69.14%	68.82%	61.33%
70 and over - dose 1	2,728,281	41,586	921,013	10,122	520,346	215,509	71,575	681,070	247,435
70 and over - dose 2	2,207,755	35,629	748,792	8,169	417,843	166,209	59,480	559,619	197,563
70 and over - population	2,934,706	39,946	962,606	12,343	577,767	240,514	77,155	743,519	280,281
70 and over % with dose 1	92.97%	>95%	>95%	82.01%	90.06%	89.60%	92.77%	91.60%	88.28%
70 and over % with dose 2	75.23%	89.19%	77.79%	66.18%	72.32%	69.11%	77.09%	75.27%	70.49%
12 to 15 - dose 1	237,041	3,284	110,191	3,205	33,420	5,787	1,999	69,016	8,750
12 to 15 - dose 2	11,992	344	5,851	506	2,545	193	280	1,761	410
12 to 15 - population	1,243,990	19,693	390,330	13,060	270,146	82,747	26,308	308,611	132,869
12 to 15 % with dose 1	19.05%	16.68%	28.23%	24.54%	12.37%	6.99%	7.60%	22.36%	6.59%
12 to 15 % with dose 2	0.96%	1.75%	1.50%	3.87%	0.94%	0.23%	1.06%	0.57%	0.31%

\*National population will not equal sum of listed jurisdictions due to a small number of people counted in national population residing in some 'other' territories. Sum of state doses will not add to national total as some records are unable to be geocoded to a State or Territory.

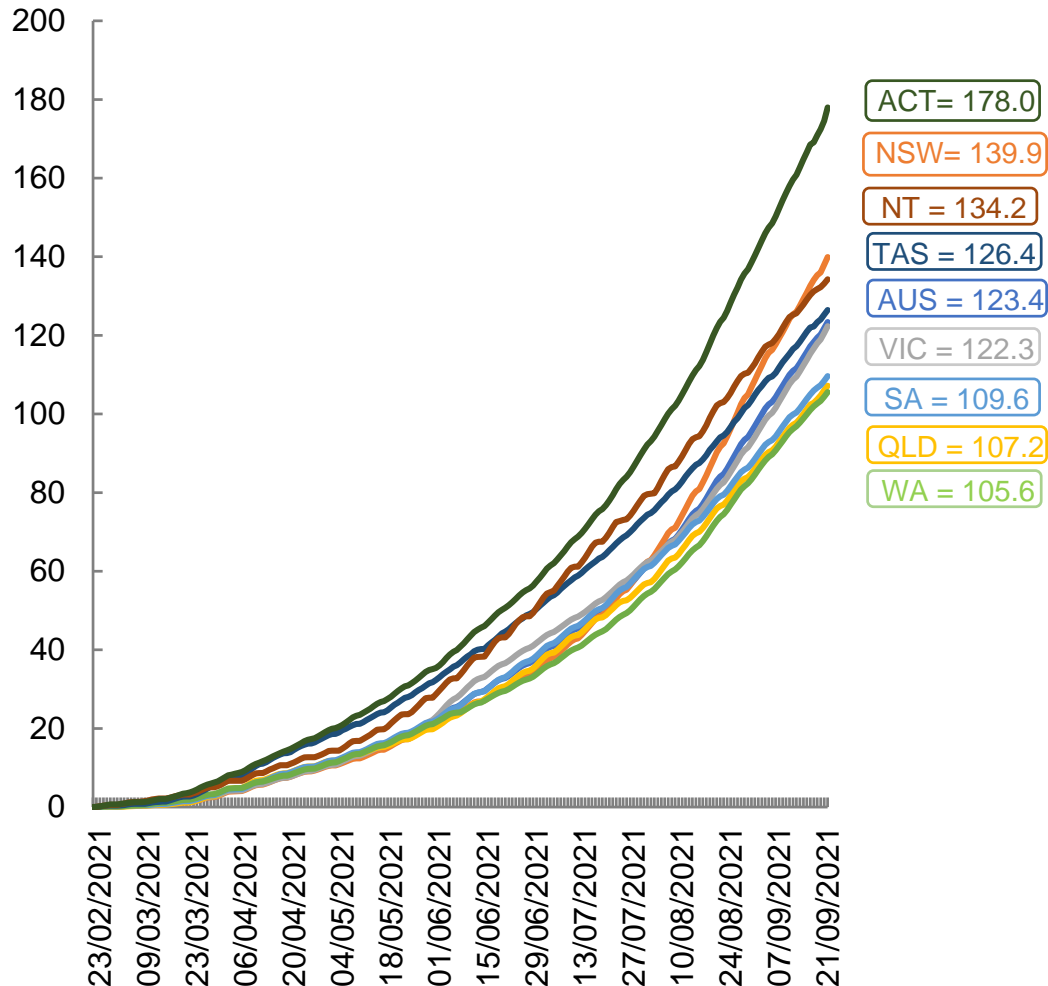
Doses sourced from Australian Immunisation Register, population from ABS ERP June 2020

# Vaccinations by location

Data as at:  
21 Sep 2021

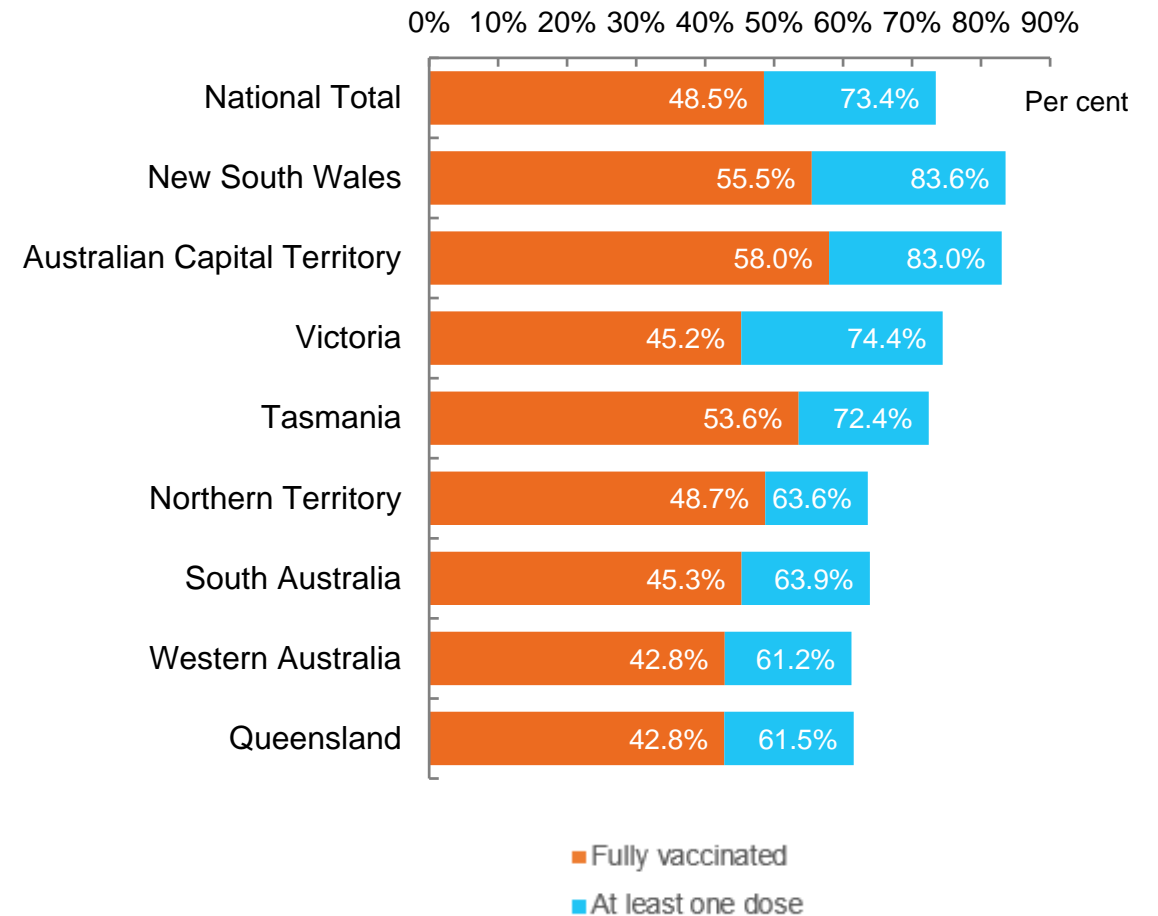
Australia's COVID-19  
Vaccine Roadmap

Cumulative total doses administered vs state populations\*



\*Not an indication of percentage vaccinated, numbers will exceed 100 due to multiple doses required per person of the population

First and Second Doses by state of residence





# Aboriginal and Torres Strait Islander peoples

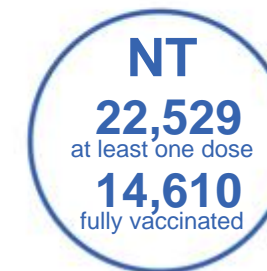
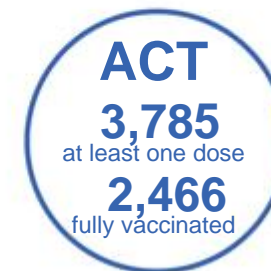
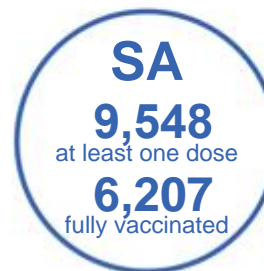
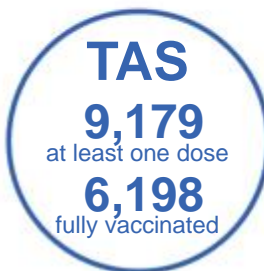
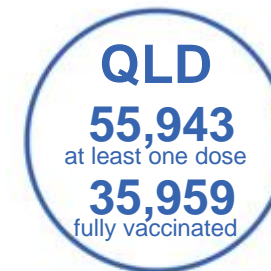
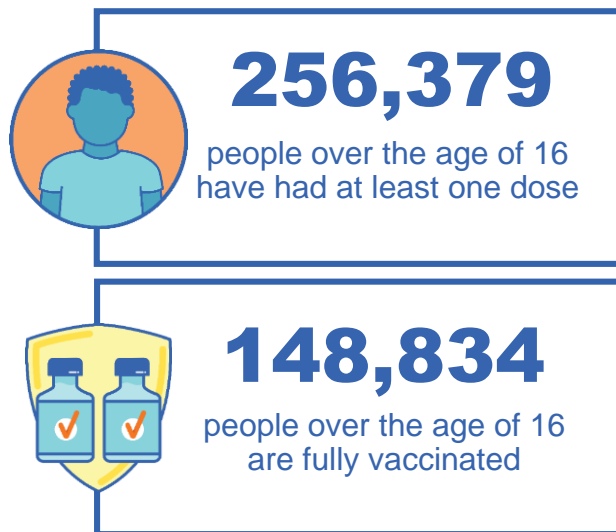
## Number of people vaccinated

Data as at:  
19 Sep 2021  
Updated weekly

Australia's COVID-19  
Vaccine Roadmap

### 165 Aboriginal community controlled health services (ACCHS)

0#	48	25	39	11	3	21	18
ACT	NSW	NT	QLD	SA	TAS	VIC	WA



**6,983** people with at least one dose  
**3,551** people fully vaccinated

residing in other territories or with missing residential information  
Source: Australian Immunisation Register

\*Identifying as Aboriginal and Torres Strait Islander is optional and the estimated population may be under reported.

\*\*Includes all Aboriginal and Torres Strait Islander peoples who have received a vaccination, not limited to those administered in an ACCHS setting

\*\*\*Updated weekly.

\*\*\*\*. Data corrections identified for Victoria have resulted in adjustments to the number of persons identifying as Aboriginal and Torres Strait Island

#ACCHS in the ACT are currently operating as a Commonwealth Vaccine Clinics so not included to avoid double counting



Data as at:  
21 Sep 2021

## Commonwealth primary care



### Primary care vaccine administration sites

<b>5,476</b>	<b>137</b>	<b>165</b>	<b>3,187</b>
GPs	CVCs	ACCHS	Pharmacies



**13,677,534** total vaccine doses  
administered primary care settings as at 21 September  
**+ 189,167** recorded in the last 24 hours

### Primary care vaccinations by provider type

	Doses administered	Daily increase	7 day increase
<b>General Practice*</b> includes other Commonwealth	13,070,318	174,978	1,022,518
<b>Pharmacy</b>	607,216	14,189	84,780

**NSW**  
**5,476,928**  
(+86,647 daily increase)

**VIC**  
**3,239,296**  
(+48,621 daily increase)

**QLD**  
**2,432,598**  
(+26,844 daily increase)

**WA**  
**1,088,135**  
(+11,762 daily increase)

**TAS**  
**239,749**  
(+1,959 daily increase)

**SA**  
**811,310**  
(+8,502 daily increase)

**ACT**  
**229,979**  
(+2,506 daily increase)

**NT**  
**86,161**  
(+935 daily increase)

**73,378** doses administered to persons  
residing in other territories or with  
missing residential information

\*General practice includes Commonwealth Vaccination Clinics, Aboriginal Community Health Centres, Royal Flying Doctor Service and other Commonwealth vaccination facilities

Source: Australian Immunisation Register

Data as at:  
21 Sep 2021

# Commonwealth aged care and disability doses administered



**934,151**

(+ 9,707 last 24 hours)

Total vaccine doses administered in aged care and disability facilities as at 21 September

Number of doses administered as part of the Commonwealth aged and disability care rollout

**NSW**  
**433,285**  
(+7,017 daily increase)

**VIC**  
**173,918**  
(+788 daily increase)

**QLD**  
**153,625**  
(+1,290 daily increase)

**WA**  
**62,037**  
(+303 daily increase)

**TAS**  
**16,431**  
(+4 daily increase)

**SA**  
**55,398**  
(+98 daily increase)

**ACT**  
**11,062**  
(+9 daily increase)

**NT**  
**5,470**  
(+17 daily increase)

\*Sourced from the Australian Immunisation Register. Includes all persons vaccinated at participating residential aged care, disability and related industry settings.

\*\*State level breakdown indicates the residential location and may not align to the state in which the vaccination occurred.

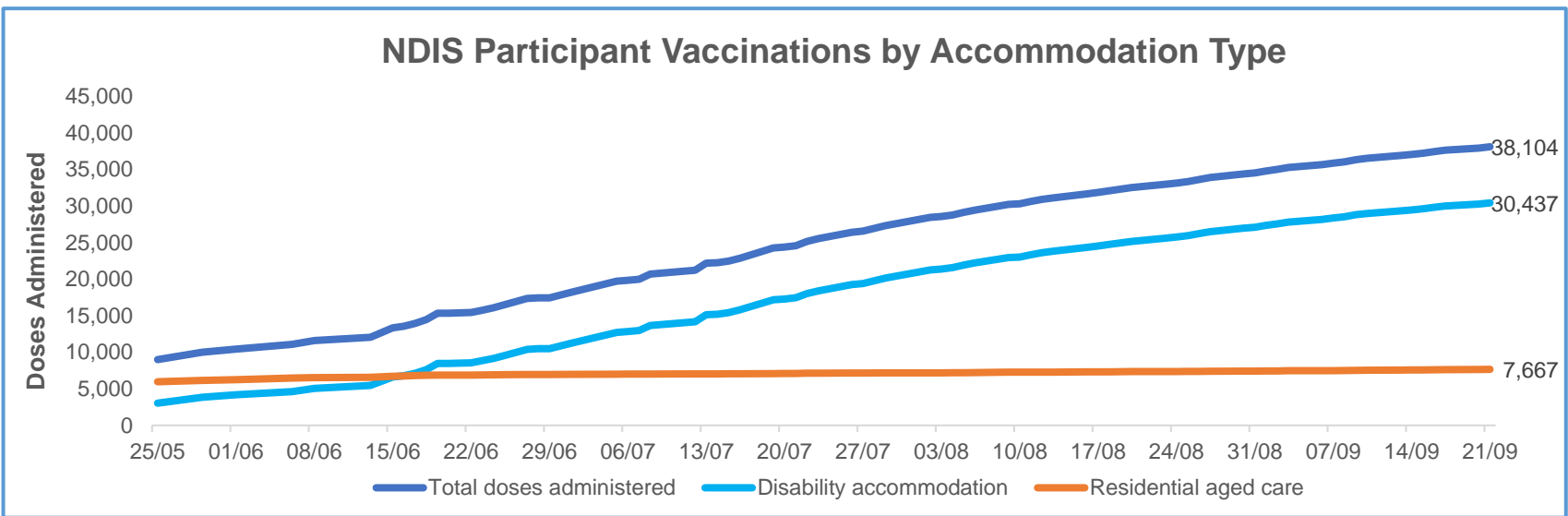
**22,925**

doses administered to persons residing in other territories or with missing residential information

Data as at:  
21 September 2021\*

# Vaccination rate of people with disability and the disability workforce

## Phase 1a – People with disability living in shared accommodation



	Total people with at least one dose	People fully vaccinated	Total number of individuals in cohort	Total doses administered	% People with at least one dose	% People fully vaccinated
NDIS participants living in shared accommodation **	20,312	17,792	27,293	38,104	74.4%	65.2%
NDIS screened workers ***	140,941	109,268	196,947	250,209	71.6%	55.5%

\* Updates are available Monday to Friday on participants, and bi-weekly for workers, numbers may be up to four days old.

\*\* Shared accommodation means two or more people with disability living in shared residential accommodation and NDIS participants living in Residential Aged Care accommodation as per the eligibility criteria of Phase 1a.

\*\*\* Total number of workers within the NDIS Commission Worker Screening database who have ever been successfully screened and linked to an NDIS registered provider or participant.

Source: Linkage between National Disability Insurance Agency data, NDIS Quality and Safeguards Commission data and the Australian Immunisation Register.

## Residential aged care vaccination rollout

### Residential aged care facilities status

**100%** Commonwealth facilities visited (2,569 planned sites)

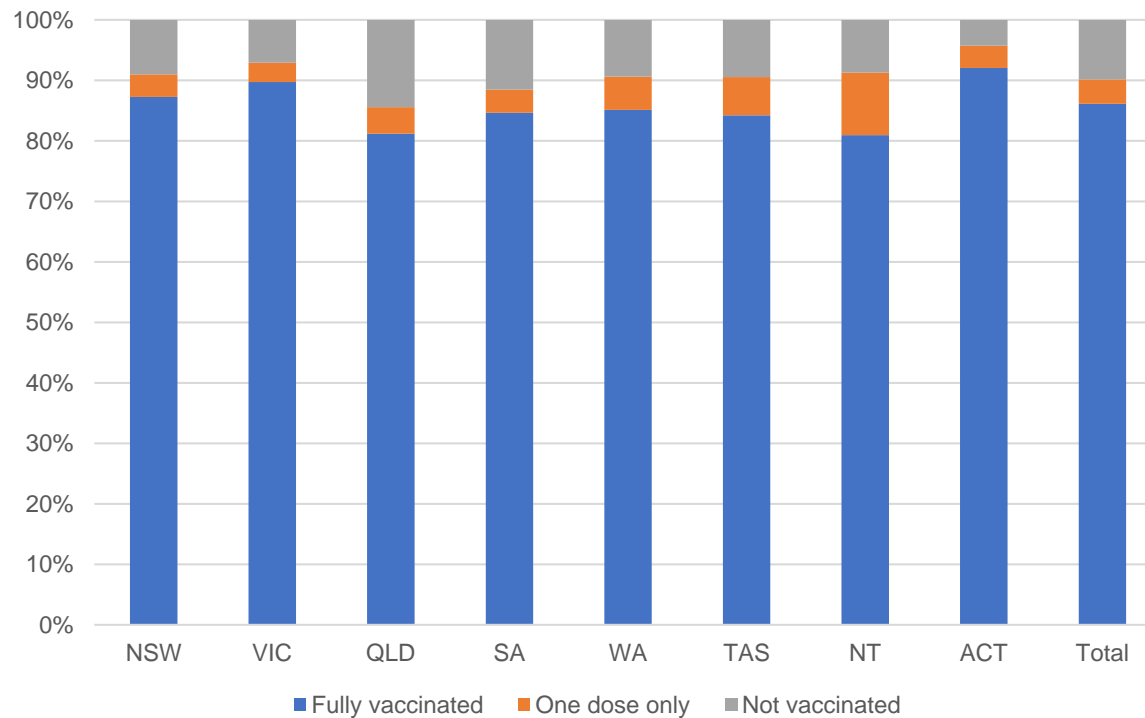
**160,530** People fully vaccinated

**90.1%** Participation rate

Australia's COVID-19 Vaccine Roadmap

Data as at:  
21 September 2021\*

### Aged care resident vaccinations



### Aged care worker vaccinations

Jurisdictions	Total workers with at least one dose	Workers fully vaccinated	% Workers with at least one dose	% Workers fully vaccinated
NSW	78,810	66,905	98.8%	83.9%
VIC	70,423	59,220	98.6%	82.9%
QLD	47,523	37,359	98.9%	77.8%
SA	26,445	21,967	98.8%	82.1%
WA	23,164	17,105	99.0%	73.1%
TAS	7,461	6,224	99.5%	83.0%
NT	797	762	99.3%	94.9%
ACT	2,934	2,571	99.2%	86.9%
<b>Total</b>	<b>257,557</b>	<b>212,113</b>	<b>98.8%</b>	<b>81.4%</b>

Source: My Aged Care Portal staff vaccination progress

\*\*Resident vaccination information is reported manually by service providers

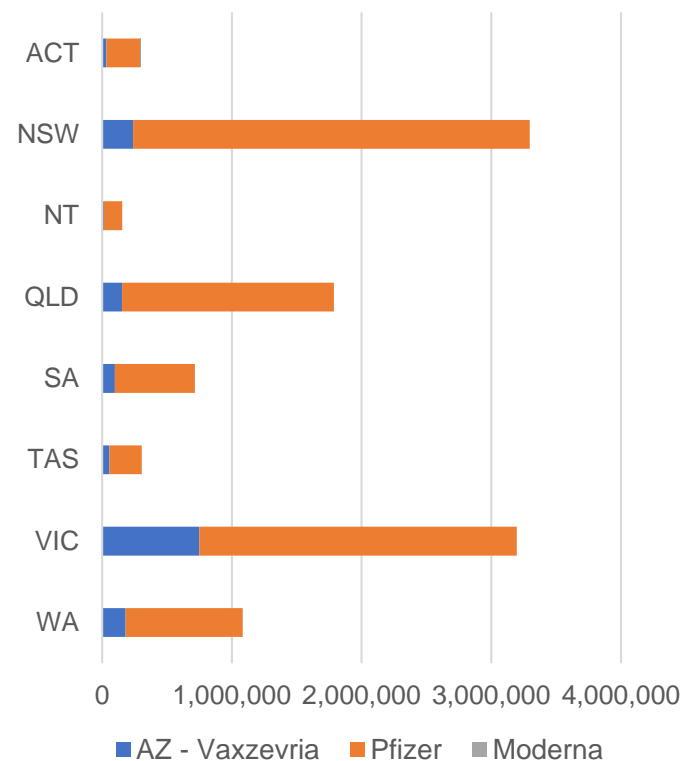
\*Status updates are provided by facilities at least once per week. Reporting is updated Monday to Friday to encompass different facility updates being made on different days.

Data is sourced directly from Aged Care Service Providers and is not drawn or closely aligned with data from AIR due to inconsistencies and potential lags in uploading of records.

Data as at:  
21 Sep 2021

# Jurisdiction administered

Total vaccine doses administered in State and Territory clinics as at 21 September



**10,833,547** total vaccine doses administered  
in State and Territory clinics as at 21 September  
+ **133,136** recorded in the last 24 hours  
+ **885,133** recorded in the last 7 days

**NSW**  
**3,297,040**  
(+37,130 daily increase)

**VIC**  
**3,196,724**  
(+42,168 daily increase)

**QLD**  
**1,787,021**  
(+19,979 daily increase)

**WA**  
**1,083,997**  
(+13,474 daily increase)

**TAS**  
**305,394**  
(+3,309 daily increase)

**SA**  
**715,341**  
(+9,028 daily increase)

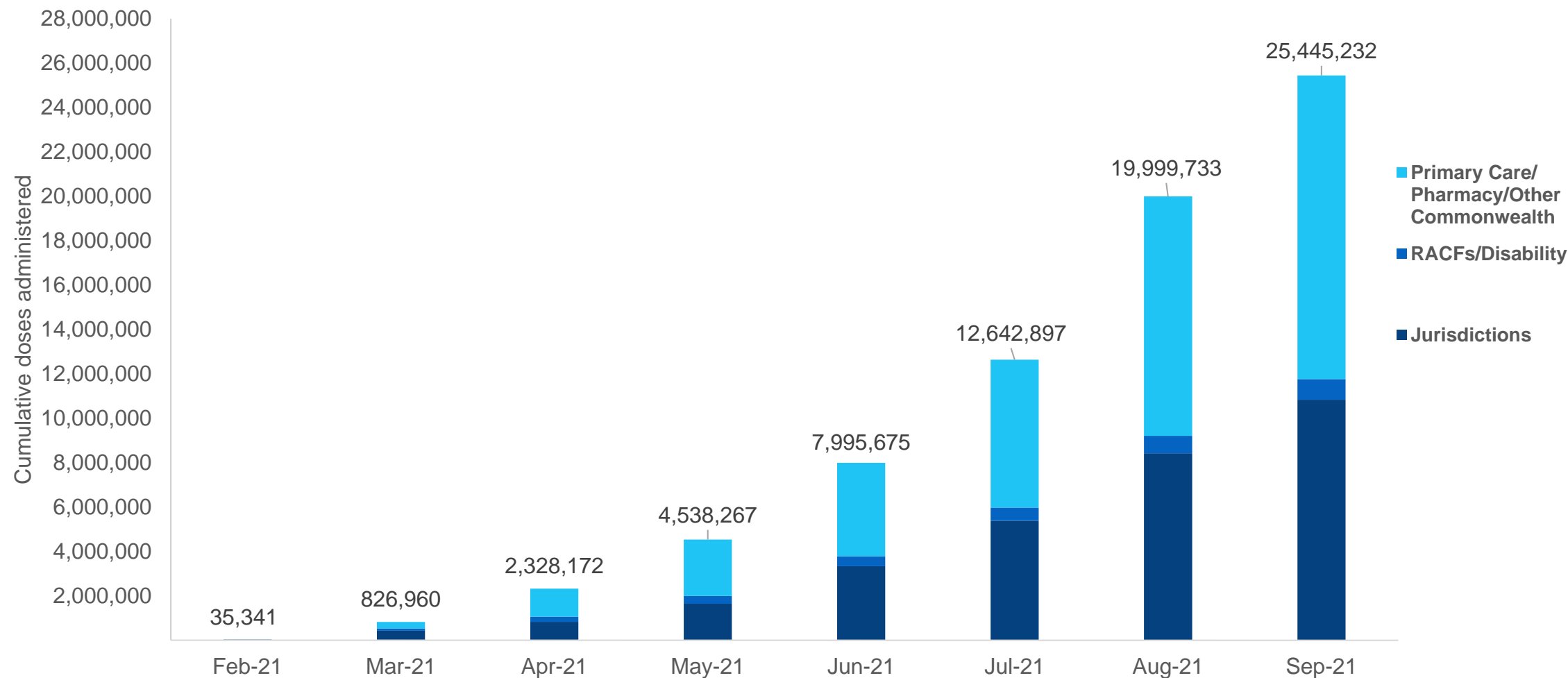
**ACT**  
**293,774**  
(+6,823 daily increase)

**NT**  
**154,256**  
(+1,225 daily increase)

\*Sourced from the Australian Immunisation Register and self-reported data. Numbers are calculated as difference in daily cumulative reported numbers to allow for historical corrections in all self-reported data sources.

## Cumulative doses administered by channel

Data as at:  
21 Sep 2021



Source: Australian Immunisation Register

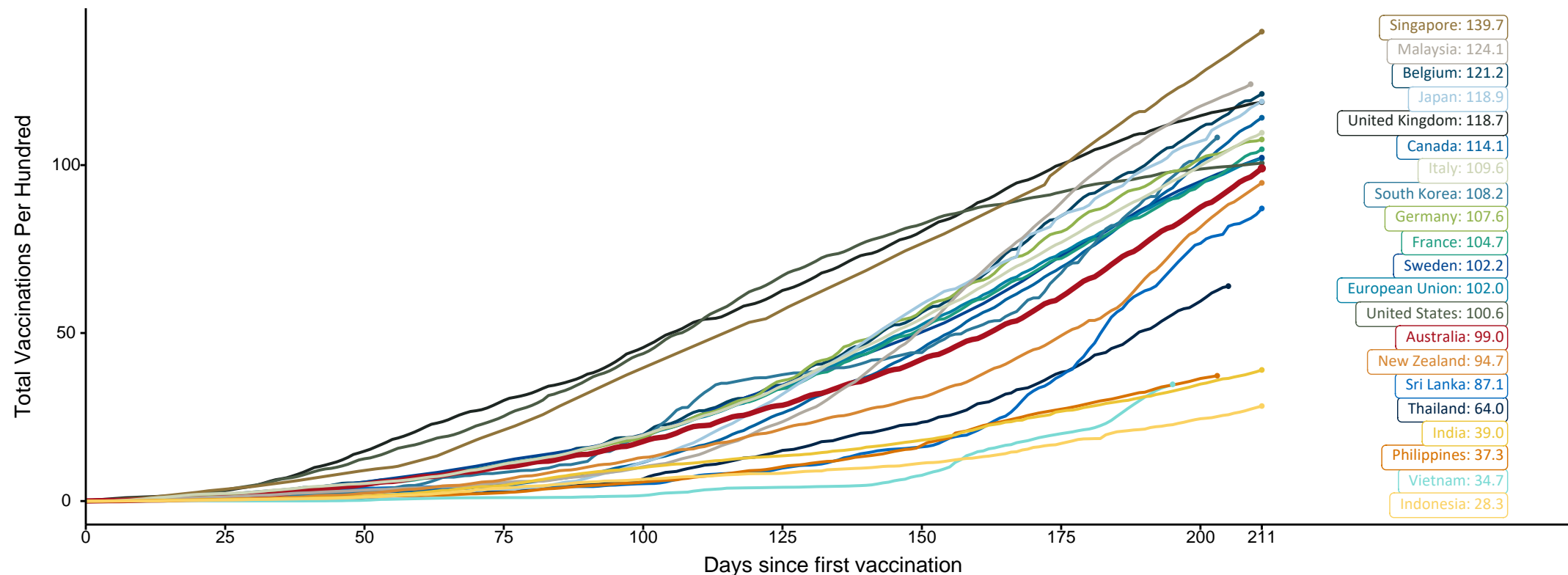


# Doses at equivalent stages of rollout (Day 211)

Data as at:  
21 Sep 2021

The x-axis is truncated at the length of Australia's vaccination program. Countries with intermittent reporting have had their doses per 100 imputed to Australia's current stage of rollout. Israel excluded as it is beyond scale of the graph

Cumulative doses administered (21 Sep): **25,445,232**



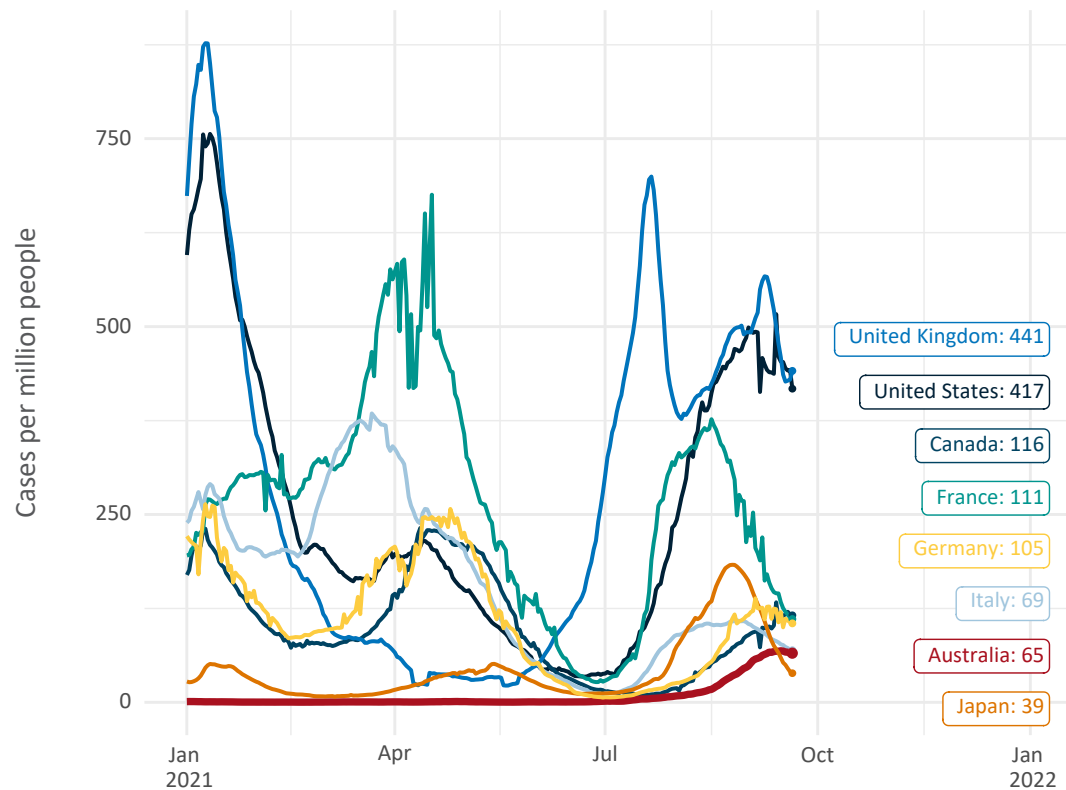
Note: From 15 September 2021, data for Australia includes all doses administered to people 12 and over. Prior to 15 September, data was for 16 and over  
Source: Department of Health (Australia), Our World in Data (international)  
Latest data: 21 September



# International data – COVID-19

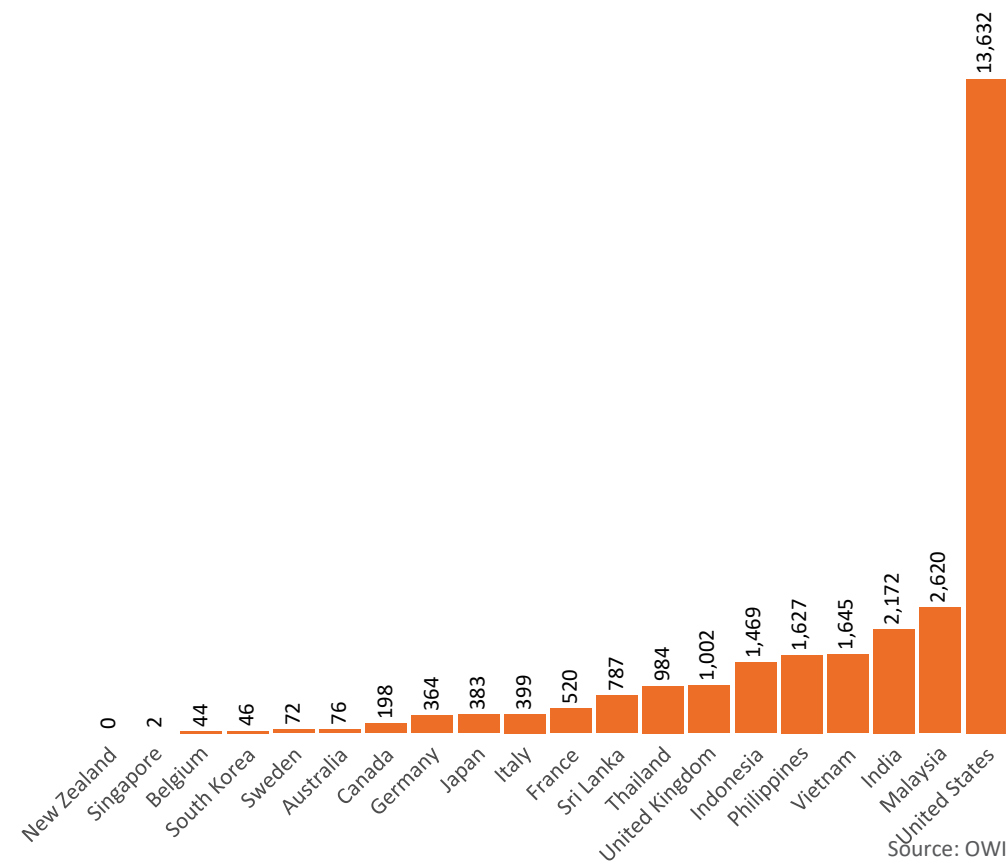
Data as at:  
21 Sep 2021

New daily cases per million in 2021, Australia and G7 countries  
Smoothed - 7 day average



Source: OWID  
Data downloaded: 22 Sep 2021 08:51  
Latest data: 20 Sep 2021

COVID-19 deaths in past 7 days - Australia and select countries



Source: OWID  
Data downloaded: 22 Sep 2021 08:51  
Latest data: 20 Sep 2021

# Pandemic Response Payments

Australia's COVID-19  
Vaccine Roadmap

Data as at midnight:  
21 Sep 2021



**2.10 million**

People have received at least one COVID  
Disaster Payment (including ISP200)

**\$8.30 billion**

Paid Out as at 21 Sep 2021

**3.56 million**

Claims granted across  
three different payments



**93%**

of Claims  
Received Digitally



**COVID Disaster Payment:**

3.50 million claims received - 1.94 million individuals paid a total of \$8.04 billion.

**\$200 Income Support Payment:**

214,000 claims received - 161,000 individuals paid a total of \$162.14 million.

**Pandemic Leave Disaster Payment:**

67,000 claims received - 58,000 individuals paid a total of \$91.66 million.



**THREE  
PAYMENTS  
AVAILABLE**

## COVID Disaster Payment

assisting during a lockdown  
event in a Commonwealth  
hotspot.

## Income Support Payment \$200

for income support  
recipients who lost at  
least 8 hours of work.

## Pandemic Leave Disaster Payment

for those who have  
to self-isolate,  
quarantine or care.

For more information visit:  
[servicesaustralia.gov.au](https://servicesaustralia.gov.au)

## COVID-19 DISASTER PAYMENTS

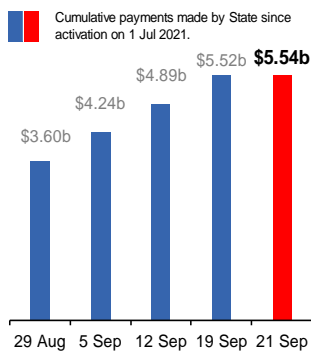
### New South Wales

Active lockdown since 24 Jun

**1.04m people have  
received at least one  
COVID Disaster Payment.**

**\$5.54b paid out as at  
21 Sep 2021.**

**\$632m paid in initial and  
reoccurring payments in the  
week ending 19 Sep 2021.**



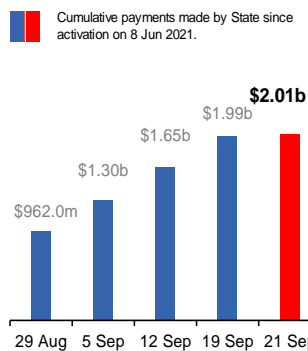
### Victoria

Active lockdown (#6) since 6 Aug

**544,000 people have  
received at least one  
COVID Disaster Payment.**

**\$2.01b paid out as at  
21 Sep 2021.**

**\$338m paid in initial and  
reoccurring payments in the  
week ending 19 Sep 2021.**



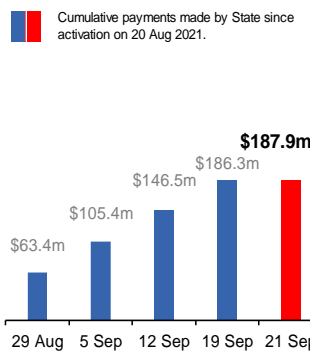
### Australian Capital Territory

Active lockdown since 12 Aug

**62,000 people have  
received at least one  
COVID Disaster Payment.**

**\$187.9m paid out as at  
21 Sep 2021.**

**\$40m paid in initial and  
reoccurring payments in the  
week ending 19 Sep 2021.**



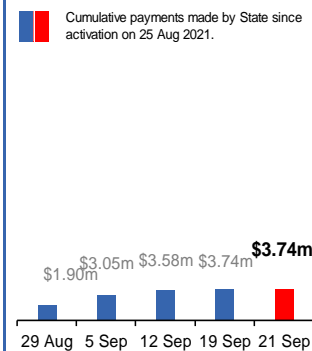
### Northern Territory

Lockdown from 18 – 20 Jul  
Claiming period ends 13 Sep

**5,774 people have  
received at least one  
COVID Disaster Payment.**

**\$3.74m paid out as at  
21 Sep 2021.**

**\$157,000 paid in initial  
payments in the week  
ending 19 Sep 2021.**



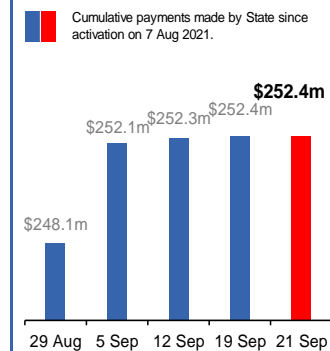
### Queensland

Lockdown from 31 Jul – 11 Aug  
Claiming period ended 28 Aug

**196,000 people have  
received at least one  
COVID Disaster Payment.**

**\$252.4m paid out as at  
21 Sep 2021.**

**\$87,000 paid in initial and  
reoccurring payments in the  
week ending 19 Sep 2021.**



### South Australia

Lockdown from 21 – 27 Jul  
Claiming period ended 17 Aug

**86,000 people have  
received at least one  
COVID Disaster Payment.**

**\$48.2m paid out as at  
21 Sep 2021.**

**\$8,000 paid in initial  
payments in the week  
ending 19 Sep 2021.**

