



Australian Government
Operation COVID Shield

COVID-19 Vaccine Roll-out

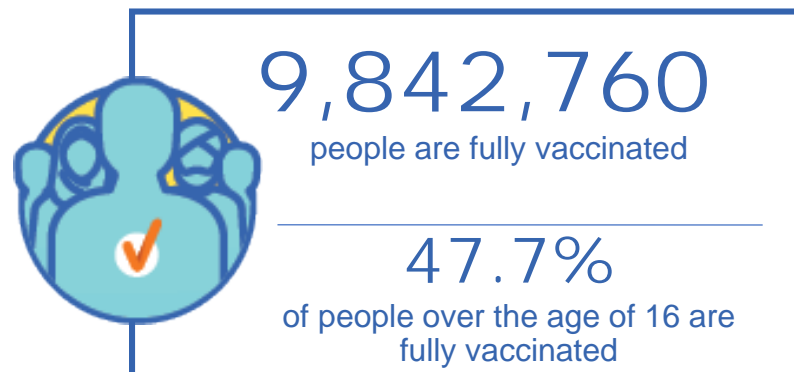
21 September 2021

Data as at:
20 Sep 2021

Total vaccine doses



25,113,222 total vaccine
doses administered nationally as at 20 September
+321,168 recorded in the last 24 hours



*Administration state breakdown indicates state in which a vaccine was administered

**Overall dose count includes instances of more than two doses per person in a small number of cases.

***Moderna is currently being incorporated into reporting systems and Moderna doses delivered yesterday are not included in totals.

Source: Australian Immunisation Register

Data as at:
20 Sep 2021

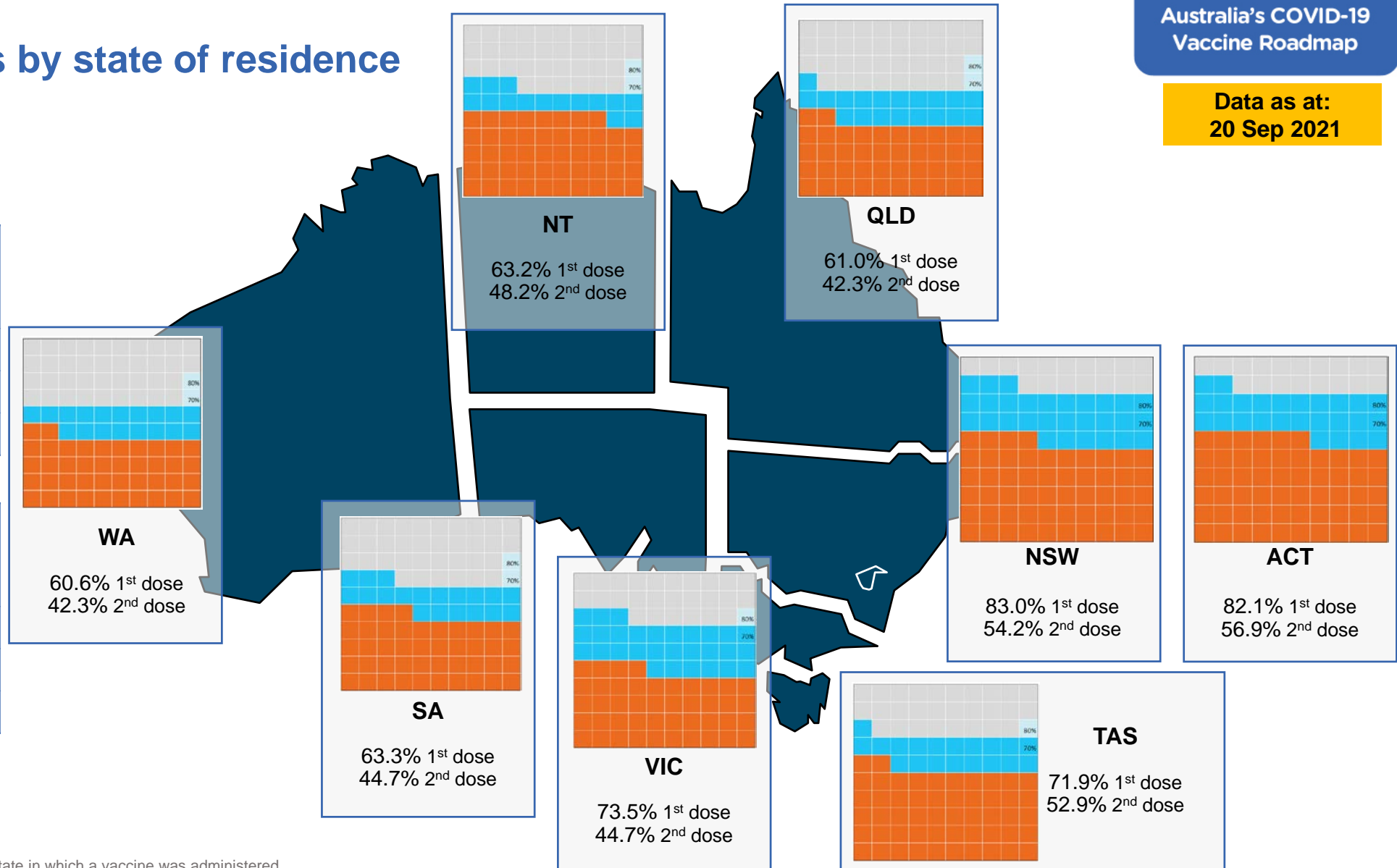
Vaccinations by state of residence

First doses

| Age | Today | 4 weeks ago | 8 weeks ago |
|-----|-------|-------------|-------------|
| 16+ | 72.8% | 54.4% | 39.2% |
| 50+ | 86.5% | 76.5% | 64.3% |
| 70+ | 92.7% | 86.5% | 79.2% |

Fully vaccinated

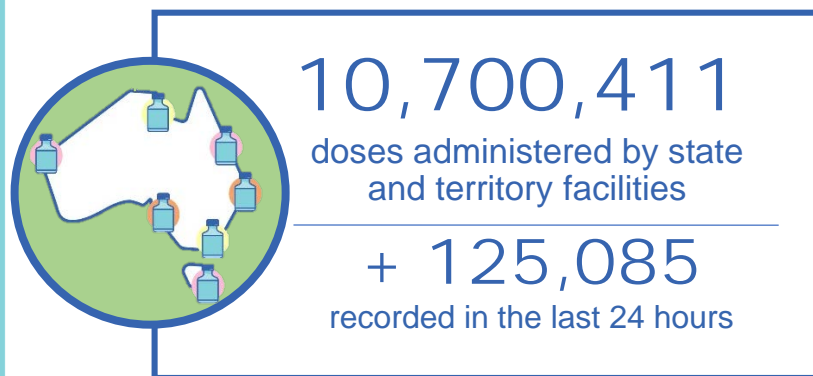
| Age | Today | 4 weeks ago | 8 weeks ago |
|-----|-------|-------------|-------------|
| 16+ | 47.7% | 31.5% | 17.3% |
| 50+ | 66.4% | 46.3% | 23.6% |
| 70+ | 74.7% | 59.0% | 38.6% |



*Residential state may differ from the state in which a vaccine was administered

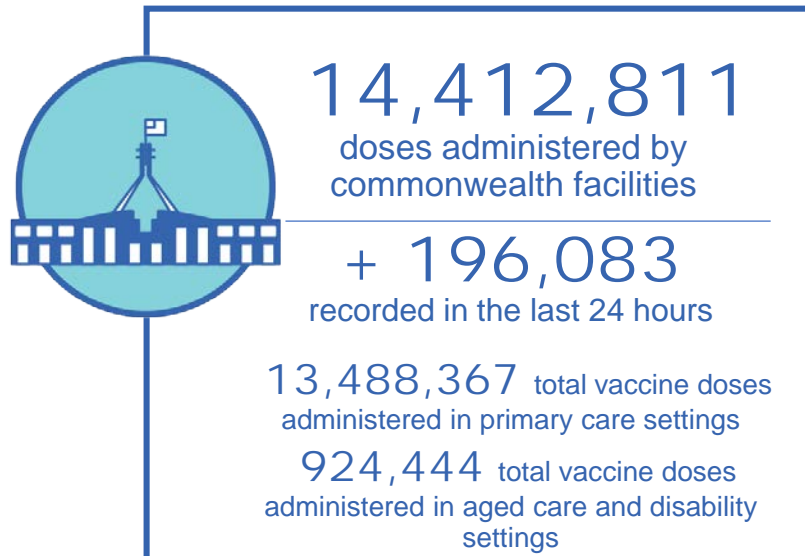
Commonwealth and Jurisdiction vaccine doses administered

Data as at:
20 Sep 2021



25,113,222 total vaccine
doses administered nationally as at 20 September

+ 321,168 recorded in the last 24 hours



| NSW | Jurisdictions | Commonwealth |
|----------------|---------------|--------------|
| Cumulative | 3,259,910 | 5,797,457 |
| Daily increase | 36,168 | 90,532 |

| VIC | Jurisdictions | Commonwealth |
|----------------|---------------|--------------|
| Cumulative | 3,154,556 | 3,367,016 |
| Daily increase | 38,811 | 49,589 |

| QLD | Jurisdictions | Commonwealth |
|----------------|---------------|--------------|
| Cumulative | 1,767,042 | 2,592,829 |
| Daily increase | 22,810 | 31,058 |

| WA | Jurisdictions | Commonwealth |
|----------------|---------------|--------------|
| Cumulative | 1,070,523 | 1,136,942 |
| Daily increase | 11,206 | 11,068 |

| TAS | Jurisdictions | Commonwealth |
|----------------|---------------|--------------|
| Cumulative | 302,085 | 249,281 |
| Daily increase | 2,526 | 2,791 |

| SA | Jurisdictions | Commonwealth |
|----------------|---------------|--------------|
| Cumulative | 706,313 | 855,007 |
| Daily increase | 8,543 | 7,173 |

| ACT | Jurisdictions | Commonwealth |
|----------------|---------------|--------------|
| Cumulative | 286,951 | 313,536 |
| Daily increase | 4,028 | 3,165 |

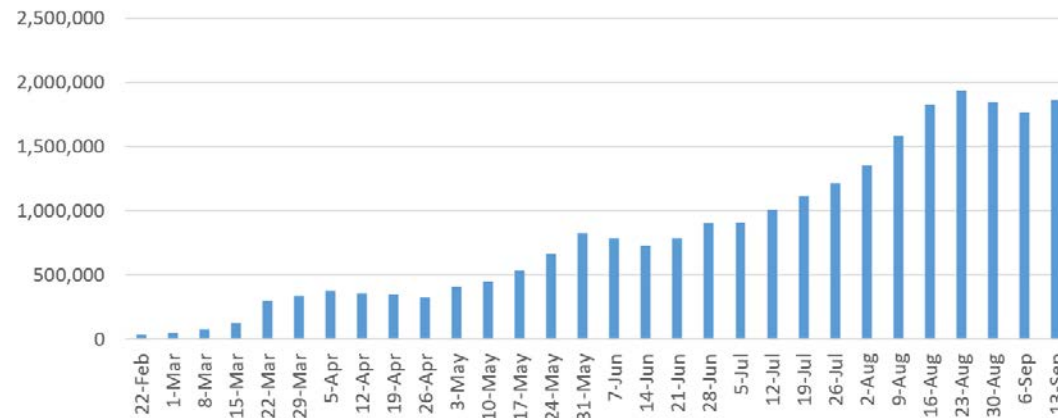
| NT | Jurisdictions | Commonwealth |
|----------------|---------------|--------------|
| Cumulative | 153,031 | 100,743 |
| Daily increase | 993 | 707 |

Vaccine milestone charts

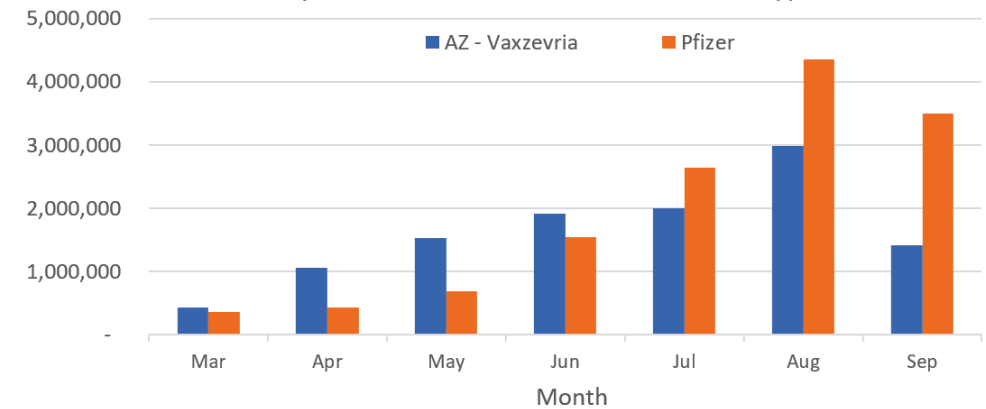
Data as at:
20 Sep 2021

Australia's COVID-19
Vaccine Roadmap

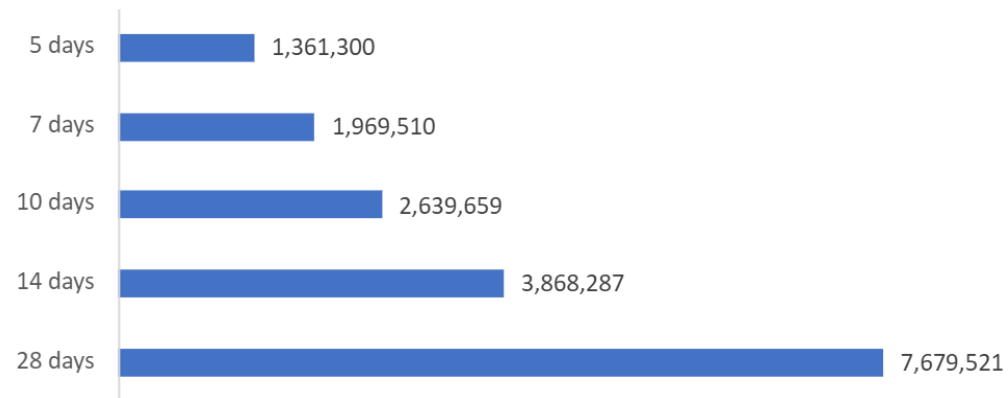
Jabs in arms by week



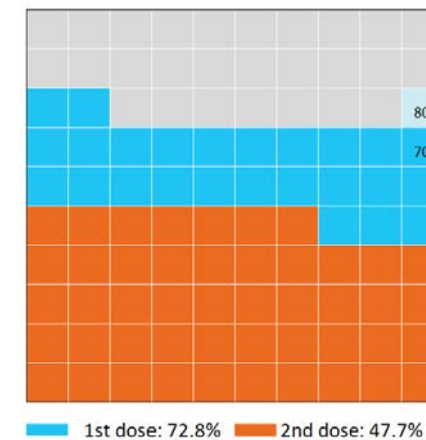
Doses by administration month and vaccine type



Doses reported



Eligible population percentage coverage



*Sourced from the Australian Immunisation Register. Please note last 28 days includes aged care readjustment of 6,895 doses.

*Each square represents 1% of the national population. Squares are filled as milestones are achieved.

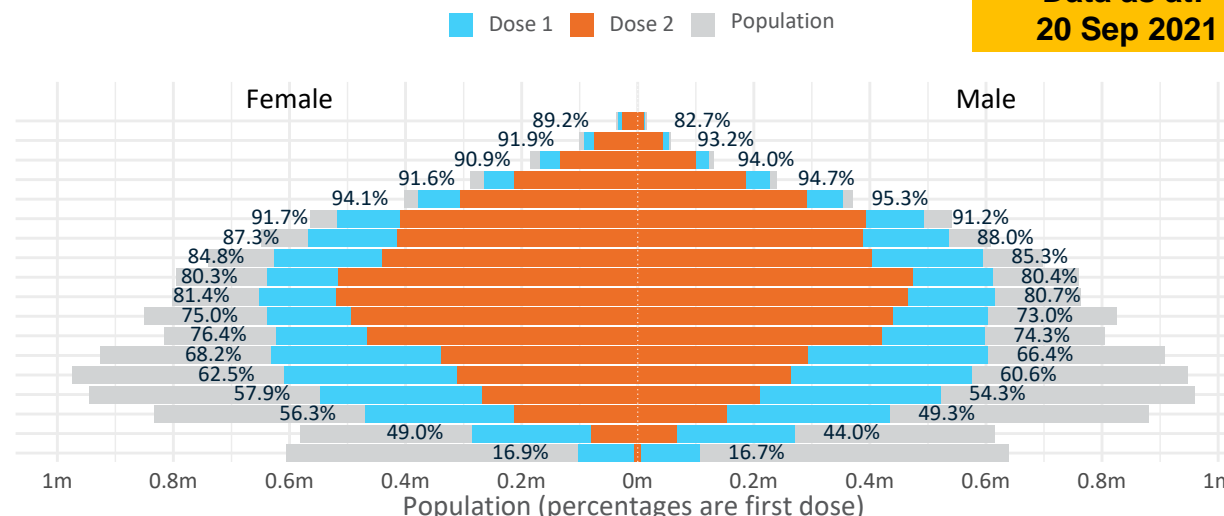
Doses by age and sex

First and second doses by age and sex

Australia's COVID-19
Vaccine Roadmap

Data as at:
20 Sep 2021

| Age | Dose 1 | Dose 2 |
|-------|-------------------|-----------------|
| 95+ | 46,281 (87.5%) | 37,682 (71.2%) |
| 90-94 | 146,532 (92.5%) | 118,680 (74.9%) |
| 85-89 | 291,646 (92.2%) | 234,674 (74.2%) |
| 80-84 | 491,755 (93.1%) | 399,456 (75.6%) |
| 75-79 | 733,181 (94.8%) | 597,255 (77.2%) |
| 70-74 | 1,011,043 (91.5%) | 803,227 (72.7%) |
| 65-69 | 1,103,751 (87.7%) | 802,482 (63.8%) |
| 60-64 | 1,222,825 (85.1%) | 843,781 (58.7%) |
| 55-59 | 1,251,057 (80.4%) | 990,775 (63.7%) |
| 50-54 | 1,269,896 (81.2%) | 985,597 (63.0%) |
| 45-49 | 1,242,442 (74.1%) | 934,680 (55.7%) |
| 40-44 | 1,222,932 (75.5%) | 888,117 (54.8%) |
| 35-39 | 1,238,763 (67.5%) | 632,831 (34.5%) |
| 30-34 | 1,190,188 (61.9%) | 575,940 (29.9%) |
| 25-29 | 1,077,524 (56.5%) | 482,869 (25.3%) |
| 20-24 | 907,878 (53.0%) | 366,667 (21.4%) |
| 16-19 | 555,296 (46.4%) | 148,047 (12.4%) |
| 12-15 | 208,975 (16.8%) | 10,856 (0.9%) |



| | AUS | ACT | NSW | NT | QLD | SA | TAS | VIC | WA |
|---------------------------|-------------|---------|-----------|---------|-----------|-----------|---------|-----------|-----------|
| 16 and over - dose 1 | 15,002,990 | 282,371 | 5,450,534 | 120,472 | 2,508,326 | 911,811 | 316,641 | 3,975,119 | 1,281,477 |
| 16 and over - dose 2 | 9,842,760 | 195,884 | 3,558,711 | 91,863 | 1,737,773 | 643,744 | 232,756 | 2,415,031 | 895,176 |
| 16 and over - population | 20,619,959* | 344,037 | 6,565,651 | 190,571 | 4,112,707 | 1,440,400 | 440,172 | 5,407,574 | 2,114,978 |
| 16 and over % with dose 1 | 72.76% | 82.08% | 83.02% | 63.22% | 60.99% | 63.30% | 71.94% | 73.51% | 60.59% |
| 16 and over % with dose 2 | 47.73% | 56.94% | 54.20% | 48.20% | 42.25% | 44.69% | 52.88% | 44.66% | 42.33% |
| 50 and over - dose 1 | 7,567,967 | 125,841 | 2,572,691 | 46,804 | 1,417,866 | 546,398 | 187,927 | 1,920,589 | 702,988 |
| 50 and over - dose 2 | 5,813,609 | 105,413 | 1,966,450 | 37,272 | 1,068,284 | 407,293 | 150,678 | 1,509,401 | 538,809 |
| 50 and over - population | 8,749,703 | 127,802 | 2,807,793 | 62,280 | 1,758,855 | 674,384 | 220,036 | 2,211,211 | 885,370 |
| 50 and over % with dose 1 | 86.49% | >95% | 91.63% | 75.15% | 80.61% | 81.02% | 85.41% | 86.86% | 79.40% |
| 50 and over % with dose 2 | 66.44% | 82.48% | 70.04% | 59.85% | 60.74% | 60.39% | 68.48% | 68.26% | 60.86% |
| 70 and over - dose 1 | 2,720,438 | 41,520 | 918,768 | 10,091 | 519,083 | 214,782 | 71,449 | 679,034 | 246,173 |
| 70 and over - dose 2 | 2,190,974 | 35,393 | 741,710 | 8,117 | 415,220 | 164,781 | 59,097 | 555,972 | 196,333 |
| 70 and over - population | 2,934,706 | 39,946 | 962,606 | 12,343 | 577,767 | 240,514 | 77,155 | 743,519 | 280,281 |
| 70 and over % with dose 1 | 92.70% | >95% | >95% | 81.75% | 89.84% | 89.30% | 92.60% | 91.33% | 87.83% |
| 70 and over % with dose 2 | 74.66% | 88.60% | 77.05% | 65.76% | 71.87% | 68.51% | 76.60% | 74.78% | 70.05% |
| 12 to 15 - dose 1 | 208,975 | 2,899 | 96,806 | 3,005 | 29,896 | 5,159 | 1,869 | 60,221 | 7,870 |
| 12 to 15 - dose 2 | 10,856 | 297 | 5,251 | 388 | 2,396 | 176 | 265 | 1,601 | 390 |
| 12 to 15 - population | 1,243,990 | 19,693 | 390,330 | 13,060 | 270,146 | 82,747 | 26,308 | 308,611 | 132,869 |
| 12 to 15 % with dose 1 | 16.80% | 14.72% | 24.80% | 23.01% | 11.07% | 6.23% | 7.10% | 19.51% | 5.92% |
| 12 to 15 % with dose 2 | 0.87% | 1.51% | 1.35% | 2.97% | 0.89% | 0.21% | 1.01% | 0.52% | 0.29% |

*National population will not equal sum of listed jurisdictions due to a small number of people counted in national population residing in some 'other' territories. Sum of state doses will not add to national total as some records are unable to be geocoded to a State or Territory.

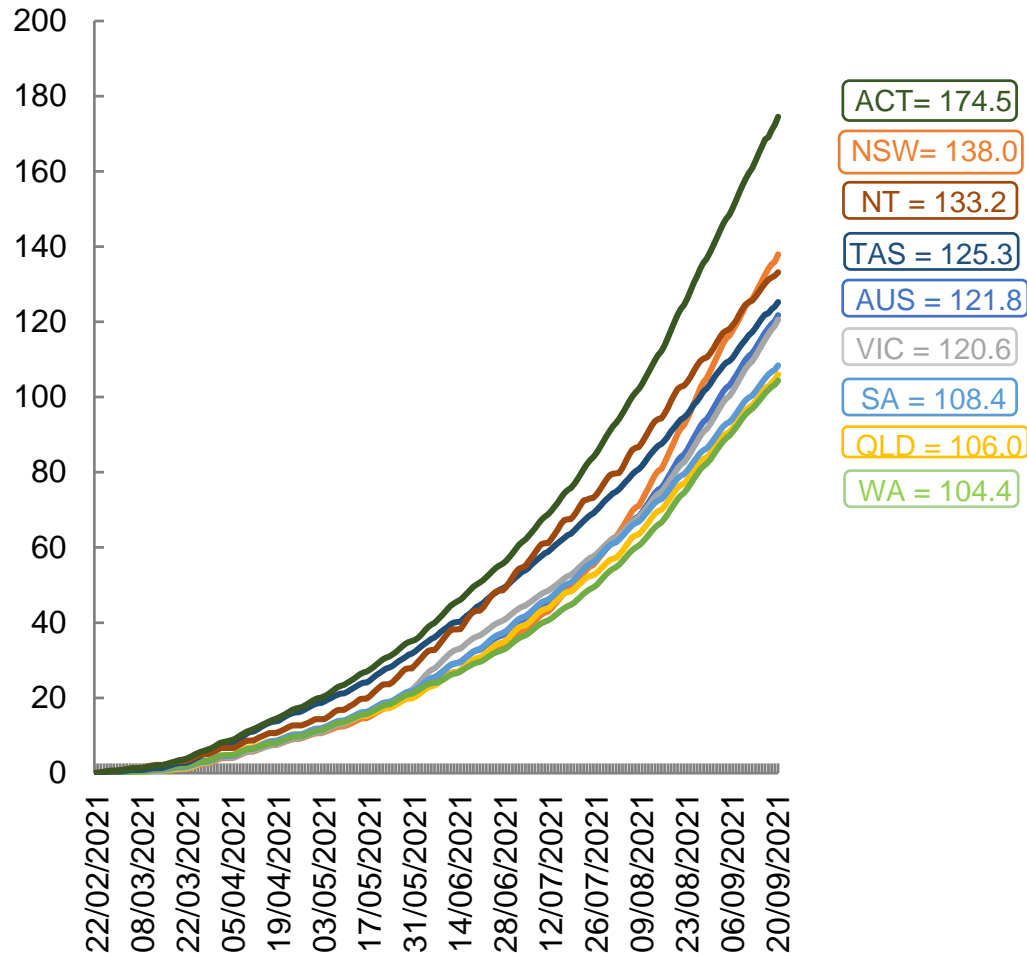
Doses sourced from Australian Immunisation Register, population from ABS ERP June 2020

Vaccinations by location

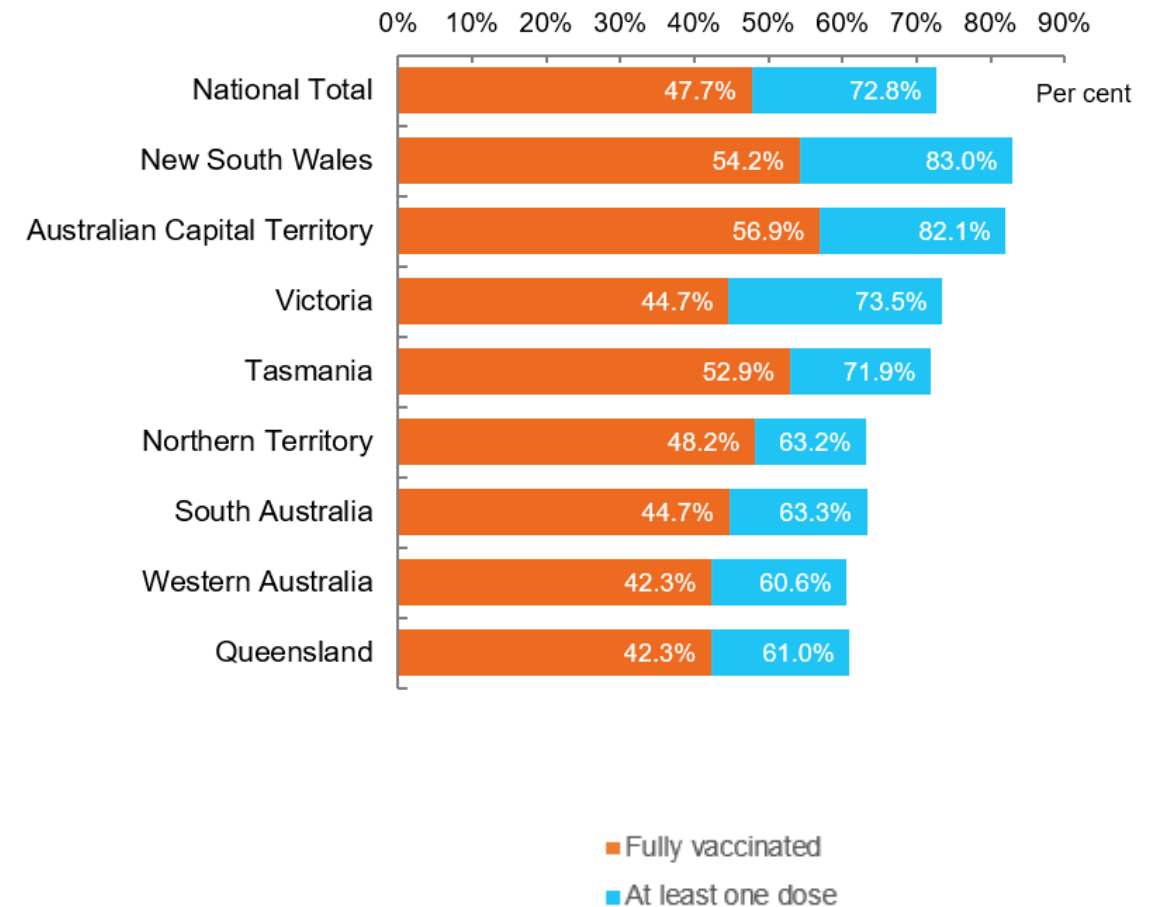
Data as at:
20 Sep 2021

Australia's COVID-19
Vaccine Roadmap

Cumulative total doses administered vs state populations*



First and Second Doses by state of residence



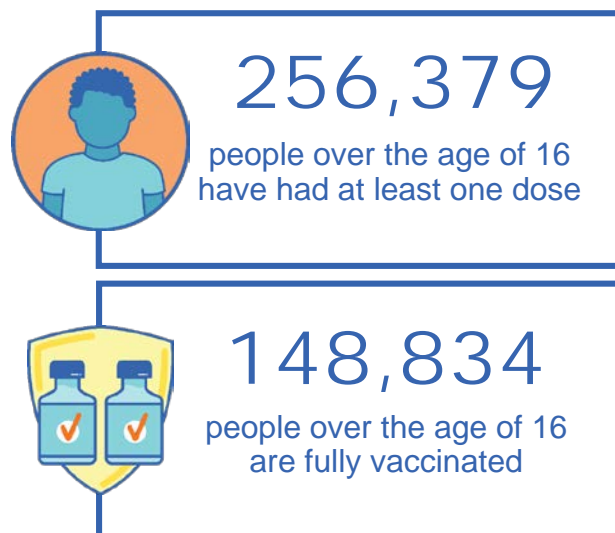
*Not an indication of percentage vaccinated, numbers will exceed 100 due to multiple doses required per person of the population

Aboriginal and Torres Strait Islander peoples

Number of people vaccinated

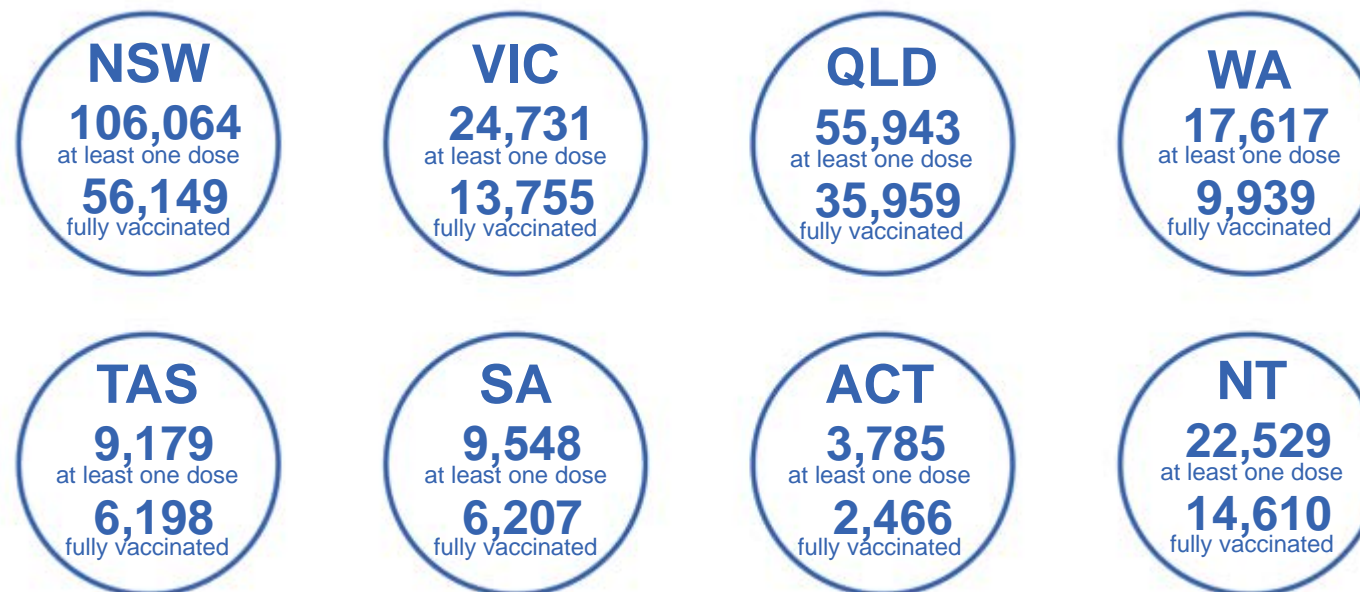
Data as at:
19 Sep 2021
Updated weekly

Australia's COVID-19
Vaccine Roadmap



165 Aboriginal community controlled health services (ACCHS)

| | | | | | | | |
|-----|-----|----|-----|----|-----|-----|----|
| 0# | 48 | 25 | 39 | 11 | 3 | 21 | 18 |
| ACT | NSW | NT | QLD | SA | TAS | VIC | WA |



*Identifying as Aboriginal and Torres Strait Islander is optional and the estimated population may be under reported.

**Includes all Aboriginal and Torres Strait Islander peoples who have received a vaccination, not limited to those administered in an ACCHS setting

***Updated weekly.

****. Data corrections identified for Victoria have resulted in adjustments to the number of persons identifying as Aboriginal and Torres Strait Island

#ACCHS in the ACT are currently operating as a Commonwealth Vaccine Clinics so not included to avoid double counting

6,983 people with at least one dose
3,551 people fully vaccinated

residing in other territories or with missing residential information

Source: Australian Immunisation Register

Data as at:
20 Sep 2021

Commonwealth primary care



Primary care vaccine administration sites

| | | | |
|-------|------|-------|------------|
| 5,418 | 137 | 165 | 3,146 |
| GPs | CVCs | ACCHS | Pharmacies |



13,488,367 total vaccine doses administered primary care settings as at 20 September
+ 189,662 recorded in the last 24 hours

Primary care vaccinations by provider type

| | Doses administered | Daily increase | 7 day increase |
|--|--------------------|----------------|----------------|
| General Practice* includes other Commonwealth | 12,895,340 | 174,522 | 996,388 |
| Pharmacy | 593,027 | 15,140 | 85,503 |



71,987 doses administered to persons residing in other territories or with missing residential information

*General practice includes Commonwealth Vaccination Clinics, Aboriginal Community Health Centres, Royal Flying Doctor Service and other Commonwealth vaccination facilities
**Moderna is currently being incorporated into reporting systems and Moderna doses delivered yesterday are not included in totals.

Source: Australian Immunisation Register

Data as at:
20 Sep 2021

Commonwealth aged care and disability doses administered



924,444 (+ 6,421 last 24 hours)

Total vaccine doses administered in aged care and disability facilities as at 20 September

Number of doses administered as part of the Commonwealth aged and disability care rollout

NSW
426,268
(+3,300 daily increase)

VIC
173,130
(+342 daily increase)

QLD
152,335
(+2,489 daily increase)

WA
61,734
(+162 daily increase)

TAS
16,427
(+11 daily increase)

SA
55,300
(+68 daily increase)

ACT
11,053
(+6 daily increase)

NT
5,453
(+4 daily increase)

*Sourced from the Australian Immunisation Register. Includes all persons vaccinated at participating residential aged care, disability and related industry settings.

**State level breakdown indicates the residential location and may not align to the state in which the vaccination occurred.

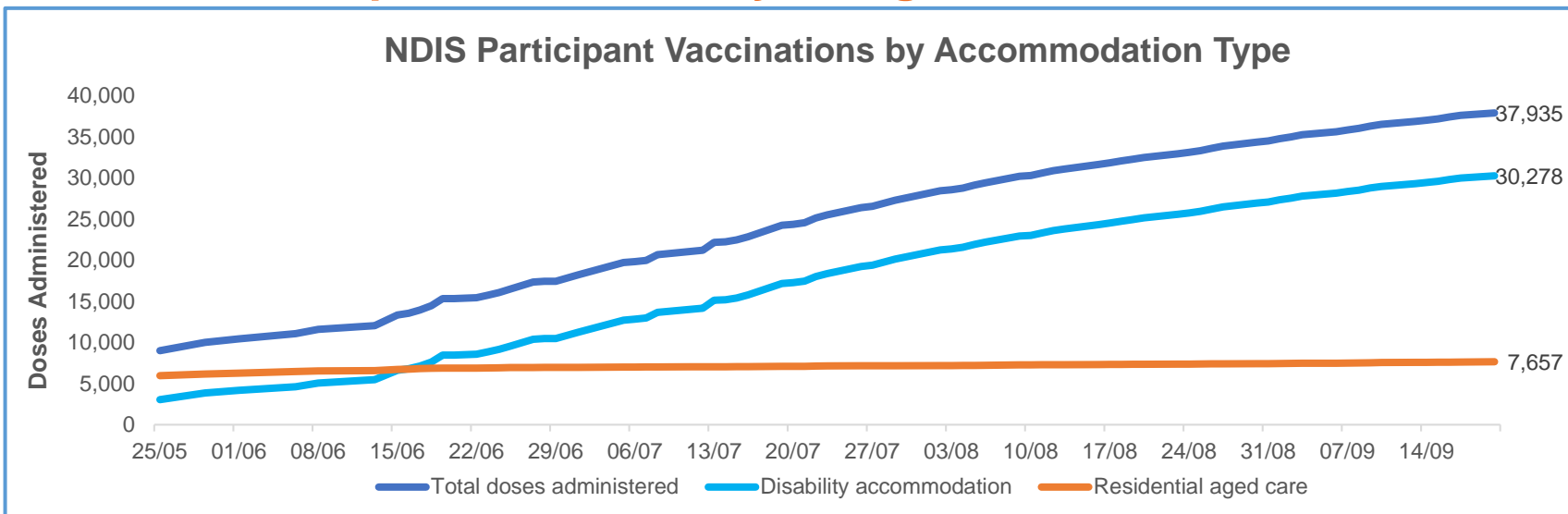
22,744

doses administered to persons residing in other territories or with missing residential information

Data as at:
20 September 2021*

Vaccination rate of people with disability and the disability workforce

Phase 1a – People with disability living in shared accommodation



| | Total people with at least one dose | People fully vaccinated | Total number of individuals in cohort | Total doses administered | % People with at least one dose | % People fully vaccinated |
|---|-------------------------------------|-------------------------|---------------------------------------|--------------------------|---------------------------------|---------------------------|
| NDIS participants living in shared accommodation ** | 20,230 | 17,705 | 27,293 | 37,935 | 74.1% | 64.9% |
| NDIS screened workers *** | 140,941 | 109,268 | 196,947 | 250,209 | 71.6% | 55.5% |

* Updates are available Monday to Friday on participants, and bi-weekly for workers, numbers may be up to four days old.

** Shared accommodation means two or more people with disability living in shared residential accommodation and NDIS participants living in Residential Aged Care accommodation as per the eligibility criteria of Phase 1a.

*** Total number of workers within the NDIS Commission Worker Screening database who have ever been successfully screened and linked to an NDIS registered provider or participant.

Source: Linkage between National Disability Insurance Agency data, NDIS Quality and Safeguards Commission data and the Australian Immunisation Register.

Residential aged care vaccination rollout

Residential aged care facilities status

100%
Commonwealth facilities visited (2,569 planned sites)

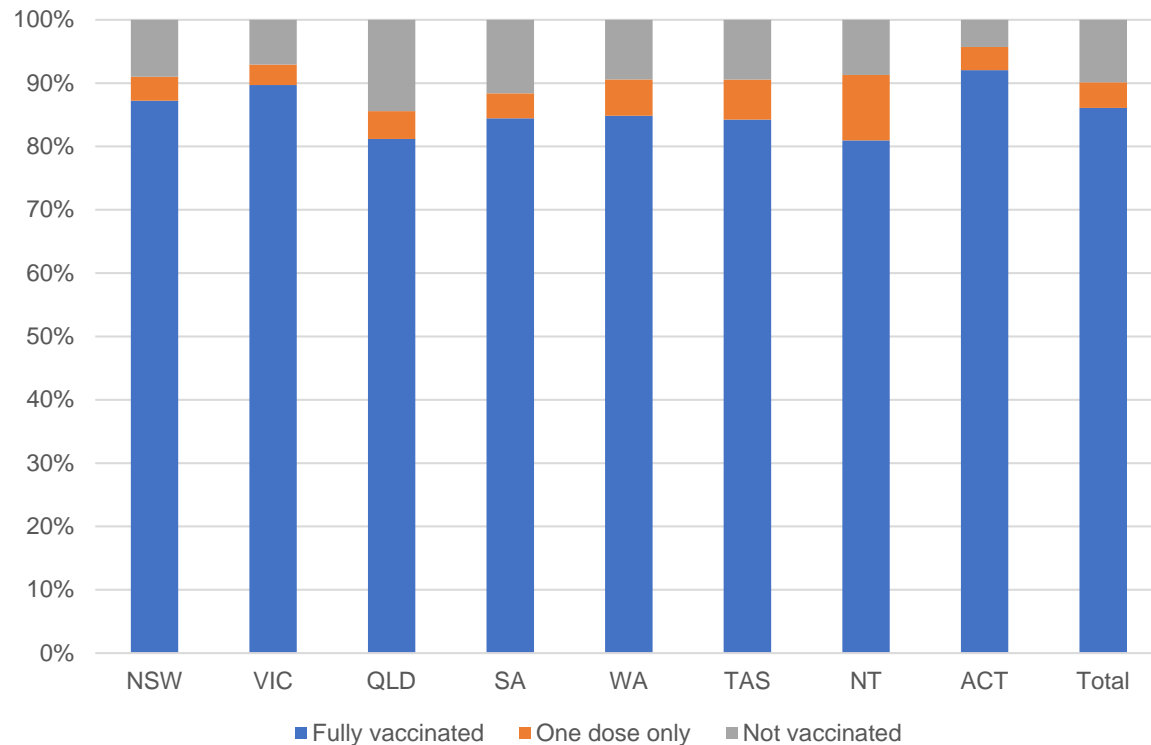
160,406
People fully vaccinated

90.1%
Participation rate

Australia's COVID-19 Vaccine Roadmap

Data as at:
20 September 2021*

Aged care resident vaccinations



Aged care worker vaccinations

| Jurisdictions | Total workers with at least one dose | Workers fully vaccinated | % Workers with at least one dose | % Workers fully vaccinated |
|---------------|--------------------------------------|--------------------------|----------------------------------|----------------------------|
| NSW | 78,477 | 65,734 | 98.5% | 82.5% |
| VIC | 69,994 | 58,165 | 98.0% | 81.4% |
| QLD | 47,161 | 36,607 | 98.4% | 76.4% |
| SA | 26,008 | 21,274 | 98.0% | 80.1% |
| WA | 23,055 | 16,514 | 98.8% | 70.7% |
| TAS | 7,391 | 6,116 | 99.4% | 82.2% |
| NT | 797 | 761 | 99.3% | 94.8% |
| ACT | 2,920 | 2,468 | 99.1% | 83.7% |
| Total | 255,803 | 207,639 | 98.3% | 79.8% |

Source: My Aged Care Portal staff vaccination progress

**Resident vaccination information is reported manually by service providers

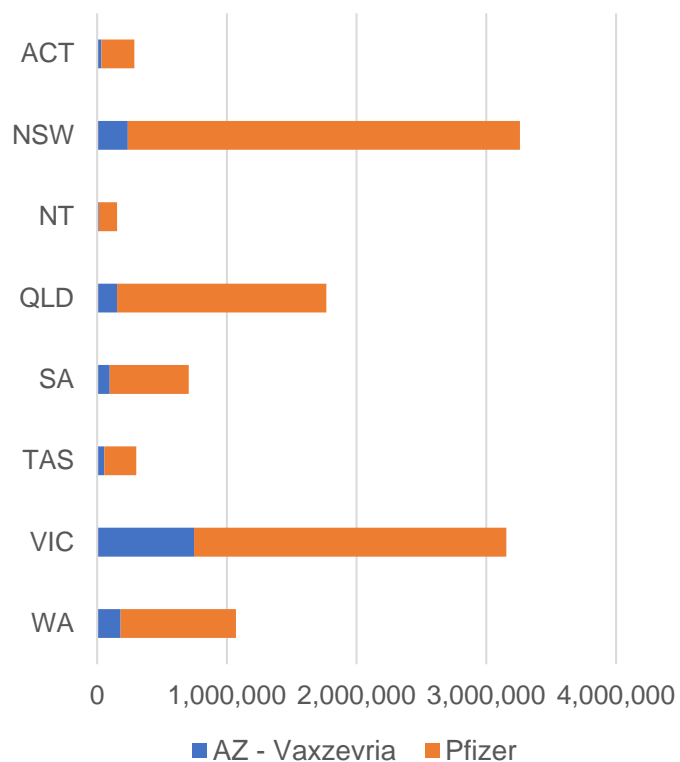
*Status updates are provided by facilities at least once per week. Reporting is updated Monday to Friday to encompass different facility updates being made on different days.

Data is sourced directly from Aged Care Service Providers and is not drawn or closely aligned with data from AIR due to inconsistencies and potential lags in uploading of records.

Data as at:
20 Sep 2021

Jurisdiction administered

Total vaccine doses administered in State and Territory clinics as at 20 September



10,700,411 total vaccine doses administered
in State and Territory clinics as at 20 September
+ 125,085 recorded in the last 24 hours
+ 873,193 recorded in the last 7 days

NSW
3,259,910
(+36,168 daily increase)

VIC
3,154,556
(+38,811 daily increase)

QLD
1,767,042
(+22,810 daily increase)

WA
1,070,523
(+11,206 daily increase)

TAS
302,085
(+2,526 daily increase)

SA
706,313
(+8,543 daily increase)

ACT
286,951
(+4,028 daily increase)

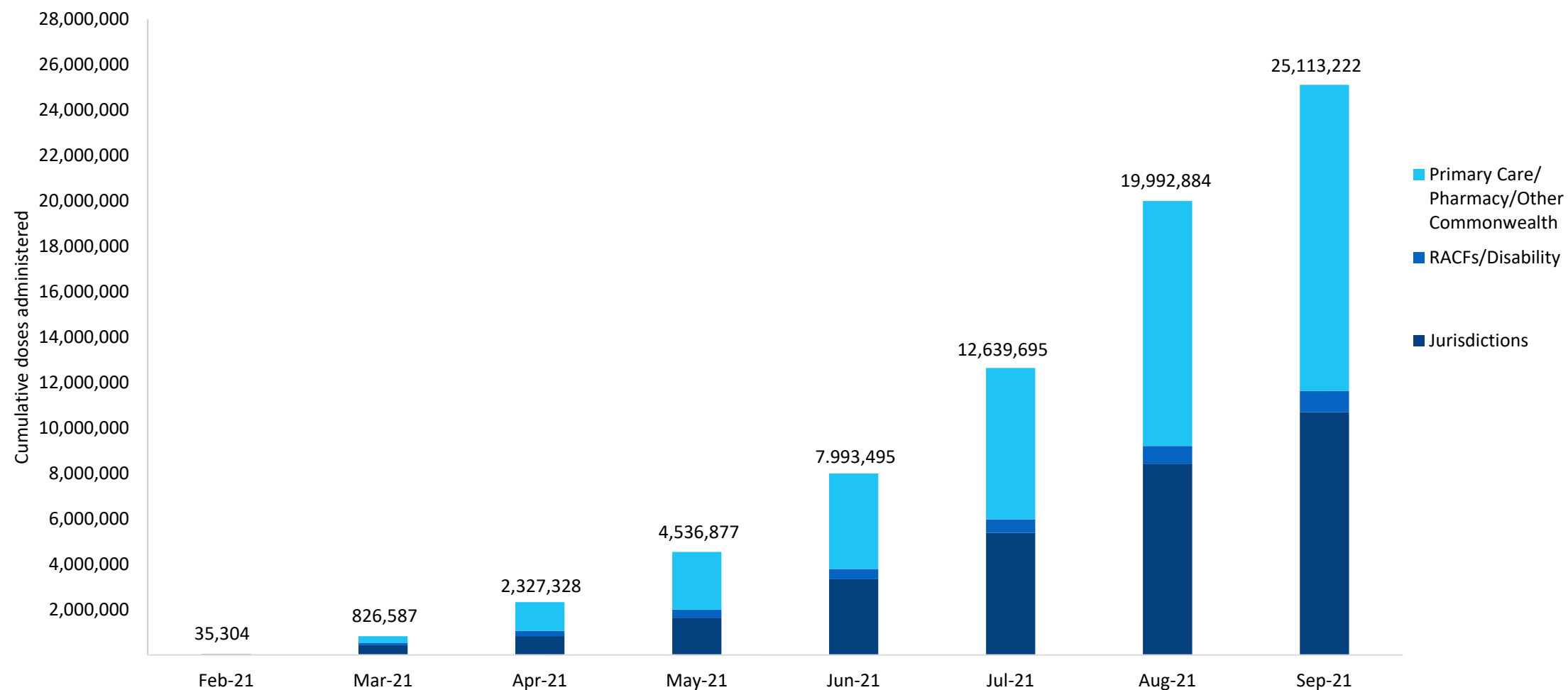
NT
153,031
(+993 daily increase)

*Sourced from the Australian Immunisation Register and self-reported data. Numbers are calculated as difference in daily cumulative reported numbers to allow for historical corrections in all self-reported data sources.

Cumulative doses administered by channel

Data as at:
20 Sep 2021

Australia's COVID-19
Vaccine Roadmap



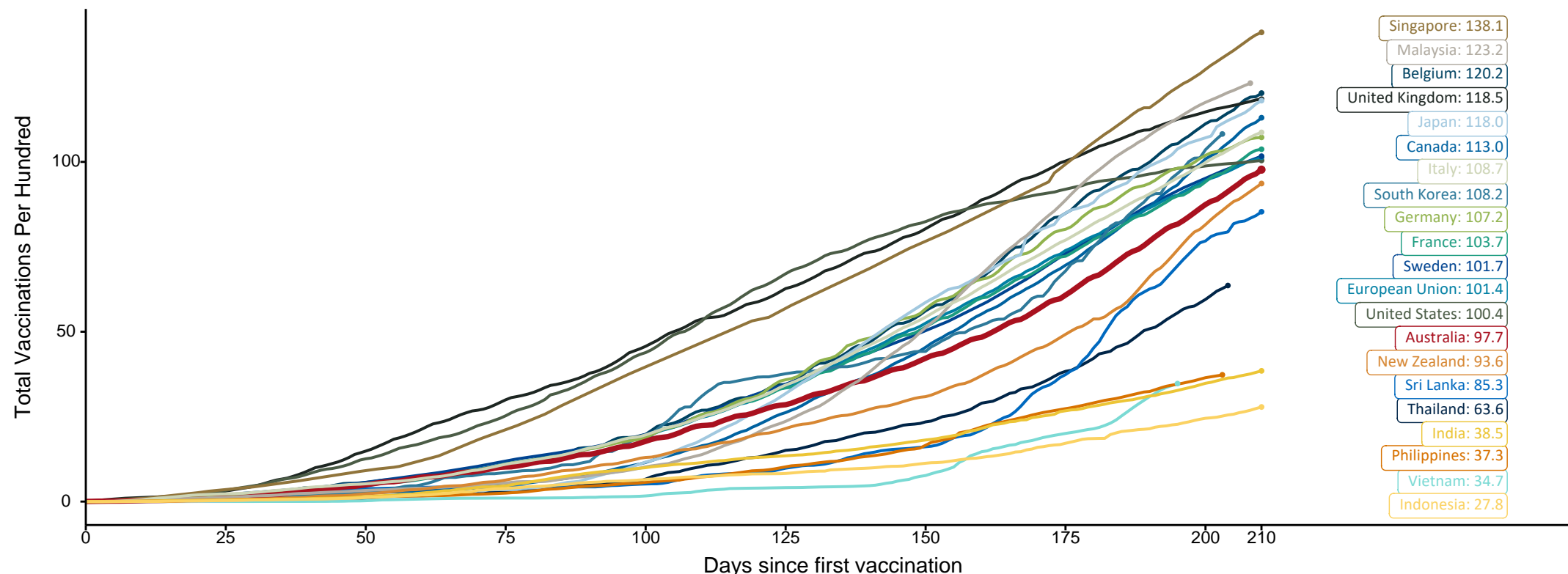
Source: Australian Immunisation Register

Doses at equivalent stages of rollout (Day 210)

Data as at:
20 Sep 2021

The x-axis is truncated at the length of Australia's vaccination program. Countries with intermittent reporting have had their doses per 100 imputed to Australia's current stage of rollout. Israel excluded as it is beyond scale of the graph

Cumulative doses administered (20 Sep): 25,113,222

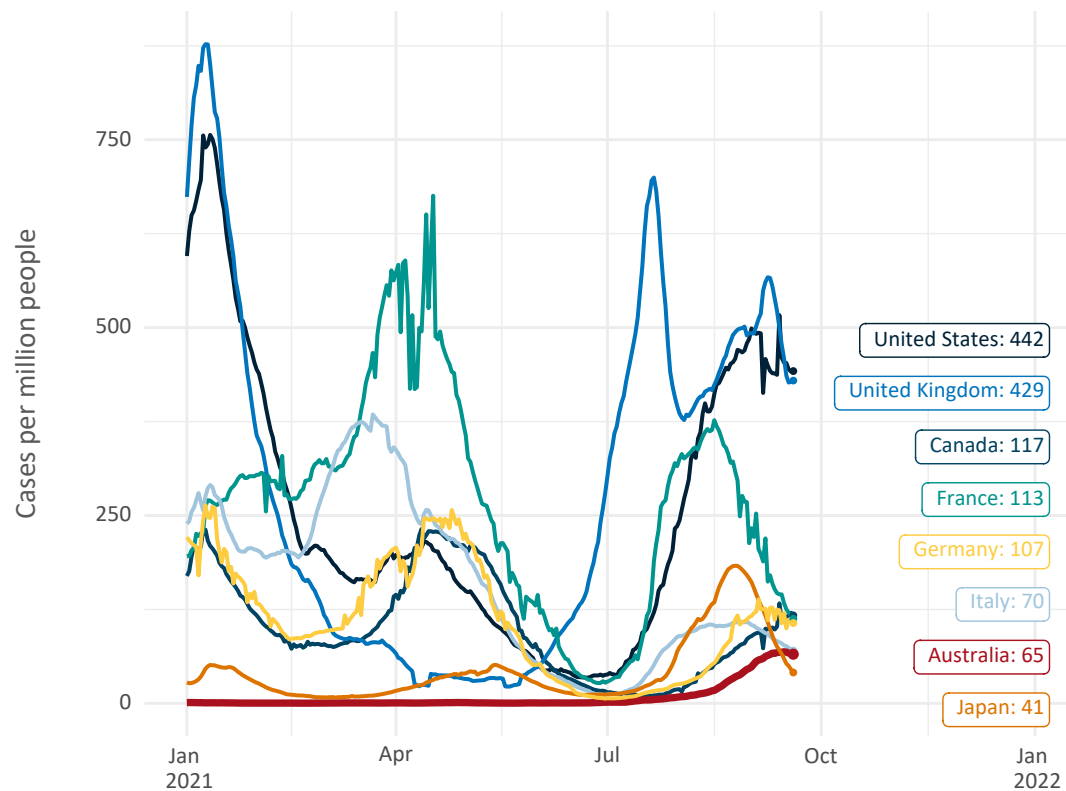


Note: From 15 September 2021, data for Australia includes all doses administered to people 12 and over. Prior to 15 September, data was for 16 and over
Source: Department of Health (Australia), Our World in Data (international)
Latest data: 20 September

International data – COVID-19

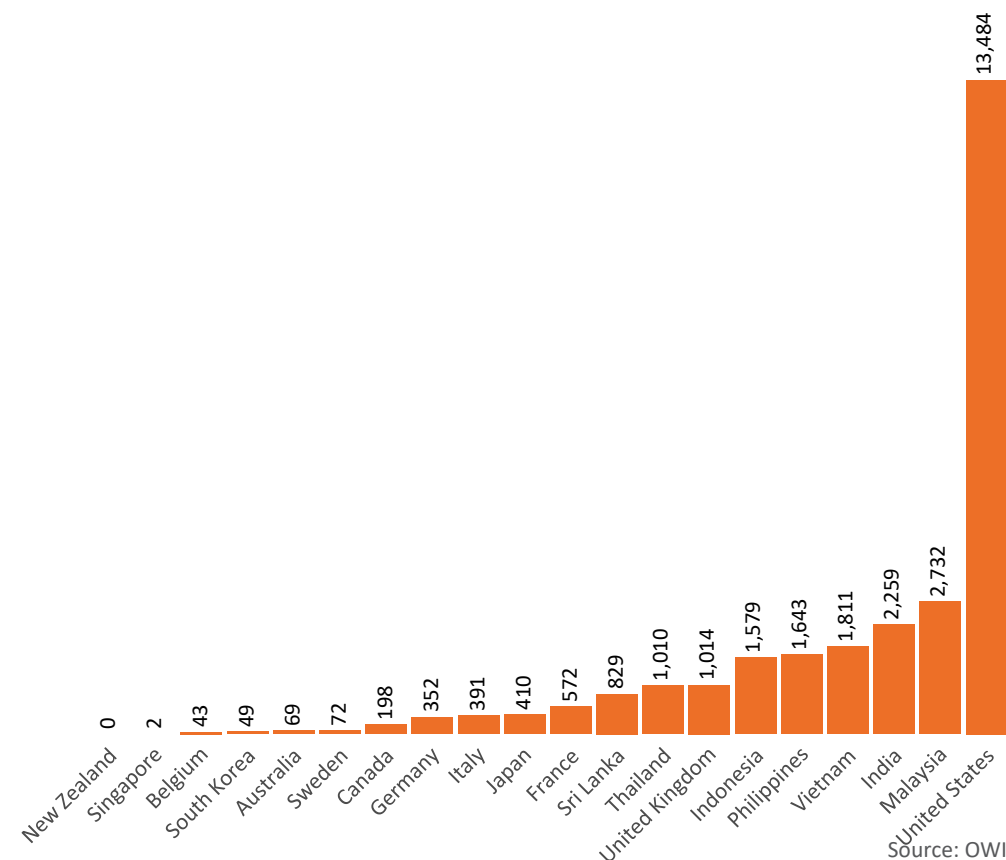
Data as at:
20 Sep 2021

New daily cases per million in 2021, Australia and G7 countries
Smoothed - 7 day average



Source: OWID
Data downloaded: 21 Sep 2021 08:37
Latest data: 19 Sep 2021

COVID-19 deaths in past 7 days - Australia and select countries



Source: OWID
Data downloaded: 21 Sep 2021 08:37
Latest data: 19 Sep 2021

Data as at midnight:
20 Sep 2021

Pandemic Response Payments



| | |
|----------------------------------|---|
| COVID Disaster Payment: | 3.48 million claims received - 1.93 million individuals paid a total of \$8.02 billion. |
| \$200 Income Support Payment: | 212,000 claims received - 160,000 individuals paid a total of \$161.09 million. |
| Pandemic Leave Disaster Payment: | 66,000 claims received - 57,000 individuals paid a total of \$89.97 million. |



COVID Disaster Payment
assisting during a lockdown event in a Commonwealth hotspot.

Income Support Payment
\$200
for income support recipients who lost at least 8 hours of work.

Pandemic Leave Disaster Payment
for those who have to self-isolate, quarantine or care.

For more information visit:
servicesaustralia.gov.au

COVID-19 DISASTER PAYMENTS

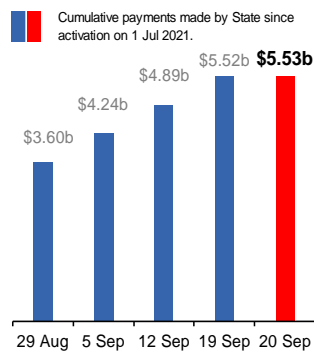
New South Wales

Active lockdown since 24 Jun

1.04m people have received at least one COVID Disaster Payment.

\$5.53b paid out as at 20 Sep 2021.

\$632m paid in initial and reoccurring payments in the week ending 19 Sep 2021.



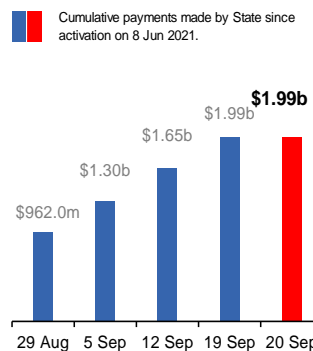
Victoria

Active lockdown (#6) since 6 Aug

536,000 people have received at least one COVID Disaster Payment.

\$1.99b paid out as at 20 Sep 2021.

\$338m paid in initial and reoccurring payments in the week ending 19 Sep 2021.



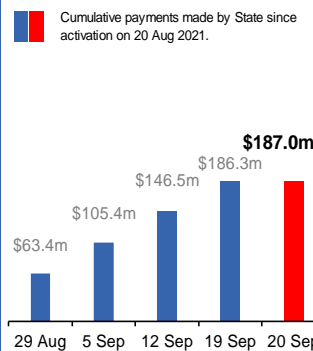
Australian Capital Territory

Active lockdown since 12 Aug

61,000 people have received at least one COVID Disaster Payment.

\$187.0m paid out as at 20 Sep 2021.

\$40m paid in initial and reoccurring payments in the week ending 19 Sep 2021.



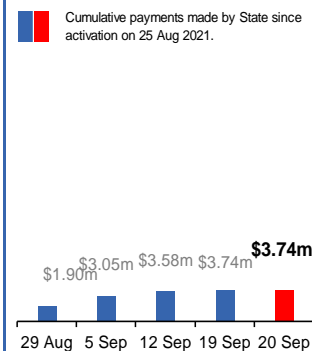
Northern Territory

Lockdown from 18 – 20 Jul
Claiming period ends 13 Sep

5,768 people have received at least one COVID Disaster Payment.

\$3.74m paid out as at 20 Sep 2021.

\$157,000 paid in initial and reoccurring payments in the week ending 19 Sep 2021.



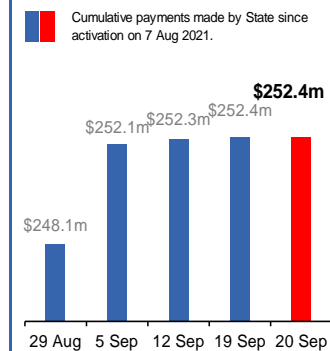
Queensland

Lockdown from 31 Jul – 11 Aug
Claiming period ended 28 Aug

196,000 people have received at least one COVID Disaster Payment.

\$252.4m paid out as at 20 Sep 2021.

\$87,000 paid in initial and reoccurring payments in the week ending 19 Sep 2021.



South Australia

Lockdown from 21 – 27 Jul
Claiming period ended 17 Aug

86,000 people have received at least one COVID Disaster Payment.

\$48.2m paid out as at 20 Sep 2021.

\$8,000 paid in initial and reoccurring payments in the week ending 19 Sep 2021.

