



Australian Government
Operation COVID Shield

COVID-19 Vaccine Roll-out

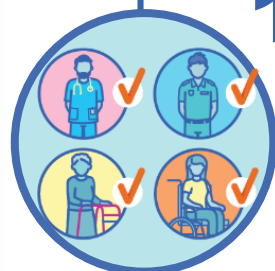
20 September 2021

Data as at:
19 Sep 2021

Total vaccine doses



24,792,054 total vaccine
doses administered nationally as at 19 September
+172,580 recorded in the last 24 hours



14,865,312

people have had at least one
dose

72.1%

of people over the age of 16
have had at least one dose



9,690,933

people are fully vaccinated

47.0%

of people over the age of 16 are
fully vaccinated

NSW
8,930,667
(+46,133 daily
increase)

VIC
6,433,172
(+54,587 daily
increase)

QLD
4,306,003
(+40,567 daily
increase)

WA
2,185,191
(+13,455 daily
increase)

TAS
546,049
(+3,049 daily
increase)

SA
1,545,604
(+8,564 daily
increase)

ACT
593,294
(+5,311 daily
increase)

NT
252,074
(+914 daily
increase)

*Administration state breakdown indicates state in which a vaccine was administered

**Overall dose count includes instances of more than two doses per person in a small number of cases.

Source: Australian Immunisation Register

Data as at:
19 Sep 2021

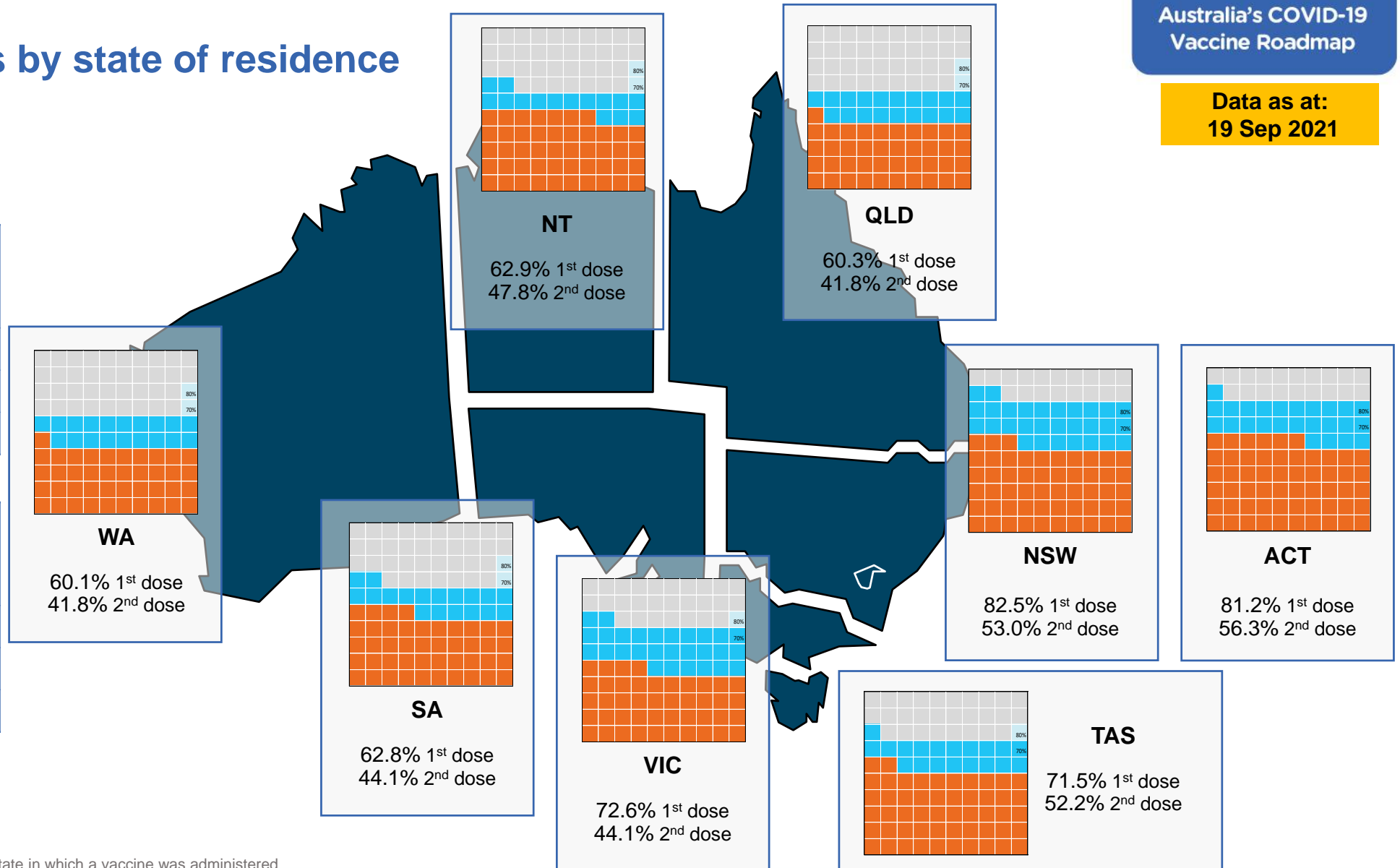
Vaccinations by state of residence

First doses

Age	Today	4 weeks ago	8 weeks ago
16+	72.1%	53.6%	38.8%
50+	86.1%	76.0%	63.8%
70+	92.4%	86.1%	78.9%

Fully vaccinated

Age	Today	4 weeks ago	8 weeks ago
16+	47.0%	30.9%	16.9%
50+	65.8%	45.3%	22.9%
70+	74.1%	58.3%	37.9%



*Residential state may differ from the state in which a vaccine was administered

Commonwealth and Jurisdiction vaccine doses administered

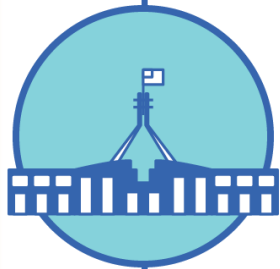
Data as at:
19 Sep 2021



24,792,054 total vaccine
doses administered nationally as at 19 September
+ 172,580 recorded in the last 24 hours



10,575,326
doses administered by state
and territory facilities
+ 113,235
recorded in the last 24 hours



14,216,728
doses administered by
commonwealth facilities
+ 59,345
recorded in the last 24 hours
13,298,705 total vaccine doses
administered in primary care settings
918,023 total vaccine doses
administered in aged care and disability
settings

NSW	Jurisdictions	Commonwealth
Cumulative	3,223,742	5,706,925
Daily increase	22,510	23,623

VIC	Jurisdictions	Commonwealth
Cumulative	3,115,745	3,317,427
Daily increase	39,329	15,258

QLD	Jurisdictions	Commonwealth
Cumulative	1,744,232	2,561,771
Daily increase	28,691	11,876

WA	Jurisdictions	Commonwealth
Cumulative	1,059,317	1,125,874
Daily increase	8,693	4,762

TAS	Jurisdictions	Commonwealth
Cumulative	299,559	246,490
Daily increase	2,802	247

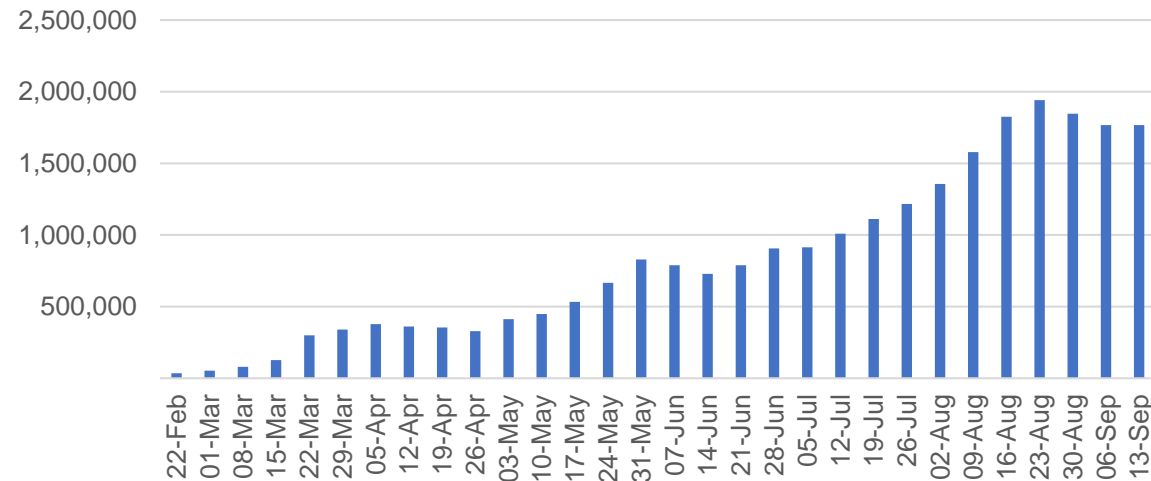
SA	Jurisdictions	Commonwealth
Cumulative	697,770	847,834
Daily increase	6,455	2,109

ACT	Jurisdictions	Commonwealth
Cumulative	282,923	310,371
Daily increase	3,860	1,451

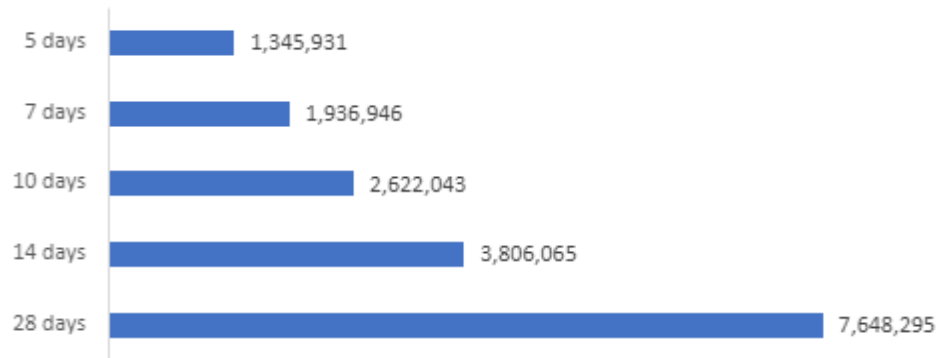
NT	Jurisdictions	Commonwealth
Cumulative	152,038	100,036
Daily increase	895	19

Vaccine milestone charts

Jabs in arms by week



Doses reported

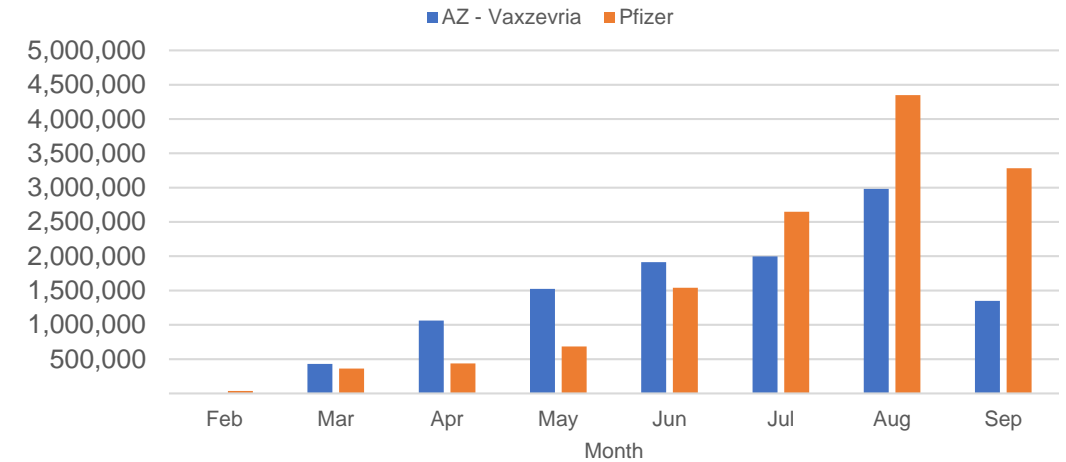


*Sourced from the Australian Immunisation Register. Please note last 28 days includes aged care readjustment of 6,895 doses.

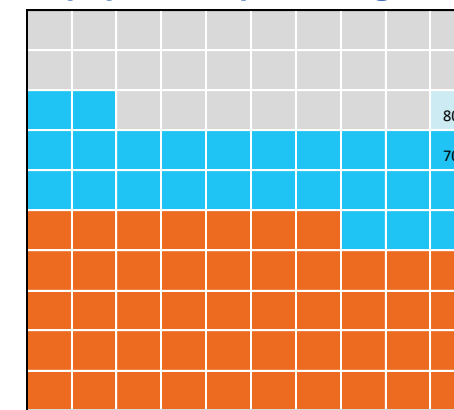
Data as at:
19 Sep 2021

Australia's COVID-19
Vaccine Roadmap

Doses by administration month and vaccine type



Eligible population percentage coverage



1st dose: 72.1% 2nd dose: 47.0%

*Each square represents 1% of the national population. Squares are filled as milestones are achieved.

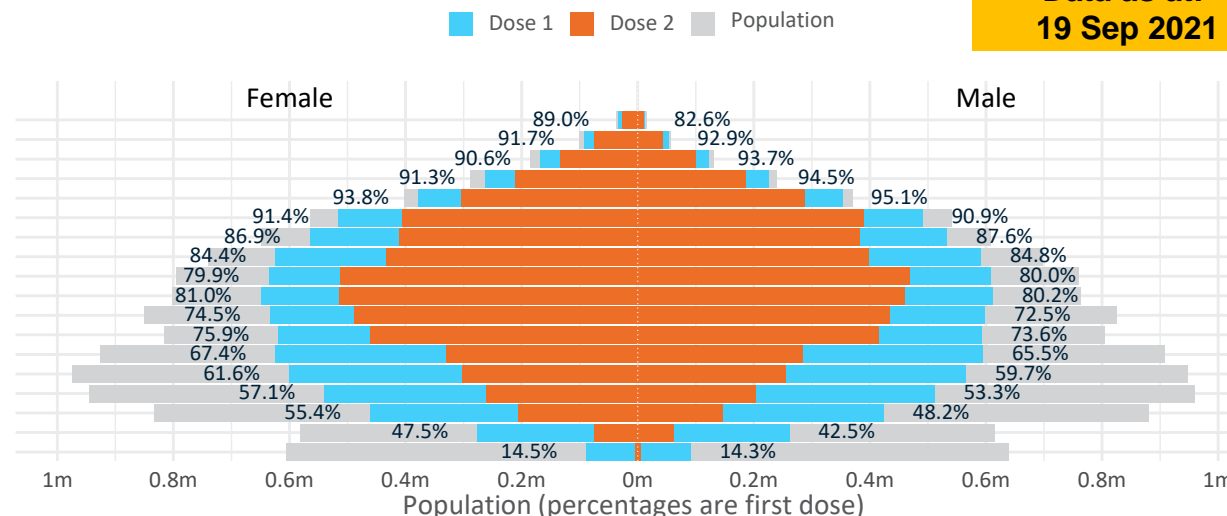
Doses by age and sex

First and second doses by age and sex

Australia's COVID-19
Vaccine Roadmap

Data as at:
19 Sep 2021

Age	Dose 1	Dose 2
95+	46,169 (87.3%)	37,464 (70.8%)
90-94	146,155 (92.3%)	117,993 (74.5%)
85-89	290,866 (92.0%)	233,141 (73.7%)
80-84	490,406 (92.8%)	396,696 (75.1%)
75-79	730,981 (94.5%)	592,937 (76.6%)
70-74	1,007,991 (91.2%)	796,993 (72.1%)
65-69	1,099,257 (87.4%)	793,351 (63.1%)
60-64	1,216,945 (84.7%)	832,595 (58.0%)
55-59	1,244,634 (80.0%)	980,988 (63.1%)
50-54	1,262,267 (80.7%)	974,945 (62.3%)
45-49	1,233,758 (73.6%)	923,198 (55.1%)
40-44	1,213,209 (74.9%)	875,907 (54.1%)
35-39	1,222,421 (66.6%)	616,022 (33.6%)
30-34	1,172,618 (61.0%)	559,441 (29.1%)
25-29	1,059,814 (55.6%)	468,282 (24.6%)
20-24	889,811 (52.0%)	353,988 (20.7%)
16-19	538,010 (45.0%)	136,992 (11.5%)
12-15	179,341 (14.4%)	9,639 (0.8%)



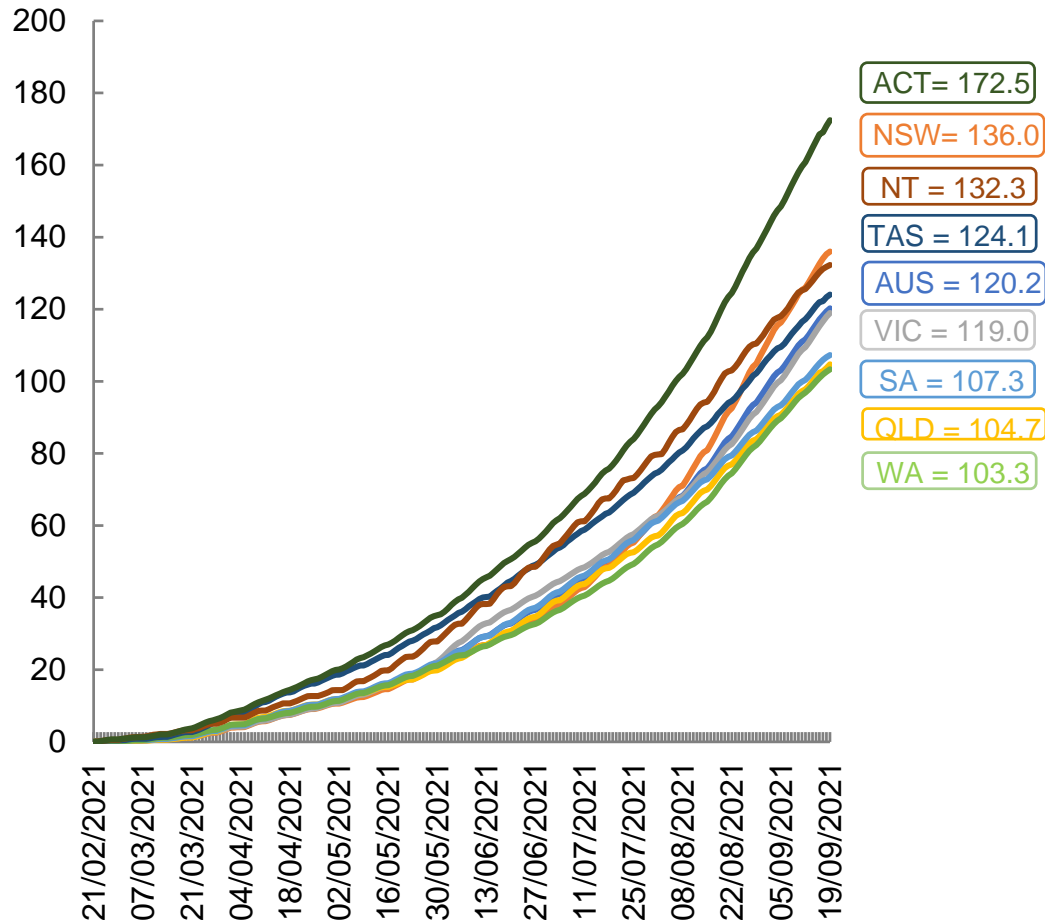
	AUS	ACT	NSW	NT	QLD	SA	TAS	VIC	WA
16 and over - dose 1	14,865,312	279,200	5,413,928	119,889	2,480,754	904,817	314,651	3,926,346	1,270,730
16 and over - dose 2	9,690,933	193,675	3,482,945	91,095	1,717,554	635,708	229,653	2,384,858	884,704
16 and over - population	20,619,959*	344,037	6,565,651	190,571	4,112,707	1,440,400	440,172	5,407,574	2,114,978
16 and over % with dose 1	72.09%	81.15%	82.46%	62.91%	60.32%	62.82%	71.48%	72.61%	60.08%
16 and over % with dose 2	47.00%	56.29%	53.05%	47.80%	41.76%	44.13%	52.17%	44.10%	41.83%
50 and over - dose 1	7,535,671	125,599	2,563,757	46,658	1,410,486	544,183	187,362	1,911,790	699,069
50 and over - dose 2	5,757,103	104,718	1,942,886	37,044	1,059,513	403,298	149,421	1,496,657	533,743
50 and over - population	8,749,703	127,802	2,807,793	62,280	1,758,855	674,384	220,036	2,211,211	885,370
50 and over % with dose 1	86.12%	>95%	91.31%	74.92%	80.19%	80.69%	85.15%	86.46%	78.96%
50 and over % with dose 2	65.80%	81.94%	69.20%	59.48%	60.24%	59.80%	67.91%	67.68%	60.28%
70 and over - dose 1	2,712,568	41,459	916,478	10,067	517,618	214,118	71,305	676,885	245,107
70 and over - dose 2	2,175,224	35,218	735,484	8,085	412,945	163,502	58,762	551,953	194,980
70 and over - population	2,934,706	39,946	962,606	12,343	577,767	240,514	77,155	743,519	280,281
70 and over % with dose 1	92.43%	>95%	>95%	81.56%	89.59%	89.03%	92.42%	91.04%	87.45%
70 and over % with dose 2	74.12%	88.16%	76.41%	65.50%	71.47%	67.98%	76.16%	74.24%	69.57%
12 to 15 - dose 1	179,341	2,450	82,570	2,924	24,751	4,544	1,694	52,231	7,037
12 to 15 - dose 2	9,639	280	4,594	342	2,232	159	142	1,450	357
12 to 15 - population	1,243,990	19,693	390,330	13,060	270,146	82,747	26,308	308,611	132,869
12 to 15 % with dose 1	14.42%	12.44%	21.15%	22.39%	9.16%	5.49%	6.44%	16.92%	5.30%
12 to 15 % with dose 2	0.77%	1.42%	1.18%	2.62%	0.83%	0.19%	0.54%	0.47%	0.27%

*National population will not equal sum of listed jurisdictions due to a small number of people counted in national population residing in some 'other' territories. Sum of state doses will not add to national total as some records are unable to be geocoded to a State or Territory.

Doses sourced from Australian Immunisation Register, population from ABS ERP June 2020

Vaccinations by location

Cumulative total doses administered vs state populations*

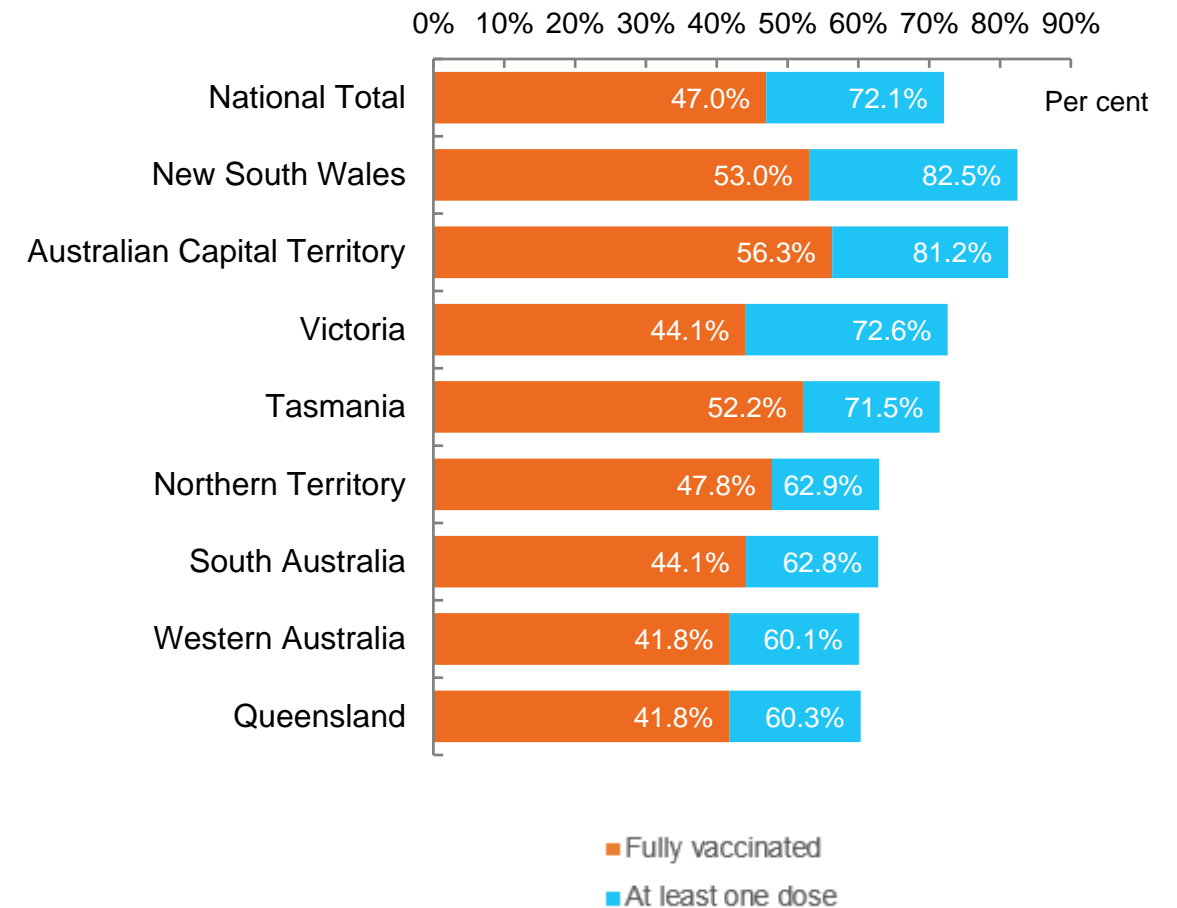


*Not an indication of percentage vaccinated, numbers will exceed 100 due to multiple doses required per person of the population

Data as at:
19 Sep 2021

Australia's COVID-19
Vaccine Roadmap

First and Second Doses by state of residence



Aboriginal and Torres Strait Islander peoples

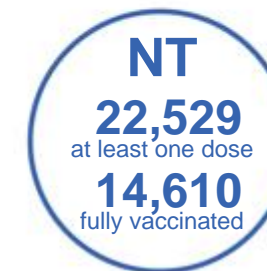
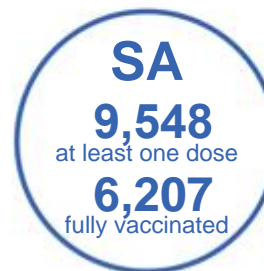
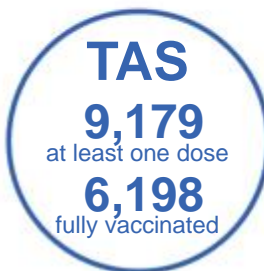
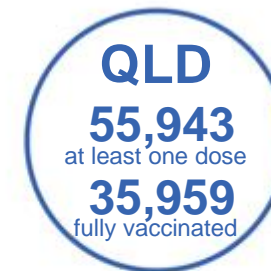
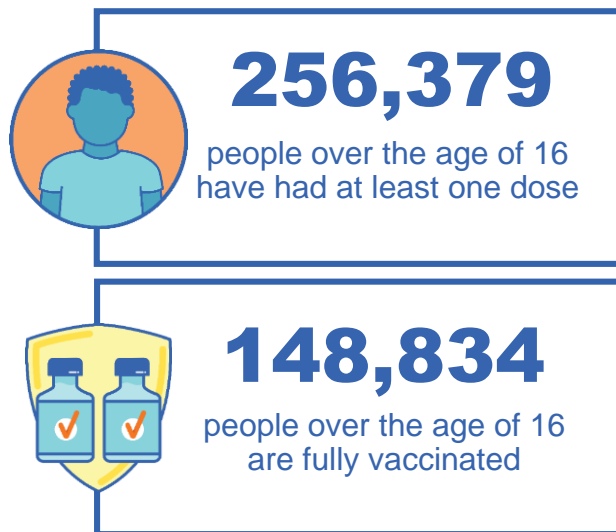
Number of people vaccinated

Data as at:
19 Sep 2021
Updated weekly

Australia's COVID-19
Vaccine Roadmap

165 Aboriginal community controlled health services (ACCHS)

0#	48	25	39	11	3	21	18
ACT	NSW	NT	QLD	SA	TAS	VIC	WA



6,983 people with at least one dose
3,551 people fully vaccinated

residing in other territories or with missing residential information
Source: Australian Immunisation Register

*Identifying as Aboriginal and Torres Strait Islander is optional and the estimated population may be under reported.

**Includes all Aboriginal and Torres Strait Islander peoples who have received a vaccination, not limited to those administered in an ACCHS setting

***Updated weekly.

****. Data corrections identified for Victoria have resulted in adjustments to the number of persons identifying as Aboriginal and Torres Strait Island

#ACCHS in the ACT are currently operating as a Commonwealth Vaccine Clinics so not included to avoid double counting

Data as at:
19 Sep 2021

Commonwealth primary care



Primary care vaccine administration sites

5,418	137	165	3,146
GPs	CVCs	ACCHS	Pharmacies



13,298,705 total vaccine doses administered primary care settings as at 19 September
+ 54,361 recorded in the last 24 hours

Primary care vaccinations by provider type

	Doses administered	Daily increase	7 day increase
General Practice* includes other Commonwealth	12,720,818	51,661	969,096
Pharmacy	577,887	2,700	86,464



71,006 doses administered to persons residing in other territories or with missing residential information

*General practice includes Commonwealth Vaccination Clinics, Aboriginal Community Health Centres, Royal Flying Doctor Service and other Commonwealth vaccination facilities

Source: Australian Immunisation Register

Data as at:
19 Sep 2021

Commonwealth aged care and disability doses administered



918,023

(+ 4,984 last 24 hours)

Total vaccine doses administered in aged care and disability facilities as at 19 September

Number of doses administered as part of the Commonwealth aged and disability care rollout

NSW
422,968
(+1,233 daily increase)

VIC
172,788
(+479 daily increase)

QLD
149,846
(+2,710 daily increase)

WA
61,572
(+255 daily increase)

TAS
16,416
(+25 daily increase)

SA
55,232
(+140 daily increase)

ACT
11,047
(+79 daily increase)

NT
5,449
(+7 daily increase)

*Sourced from the Australian Immunisation Register. Includes all persons vaccinated at participating residential aged care, disability and related industry settings.

**State level breakdown indicates the residential location and may not align to the state in which the vaccination occurred.

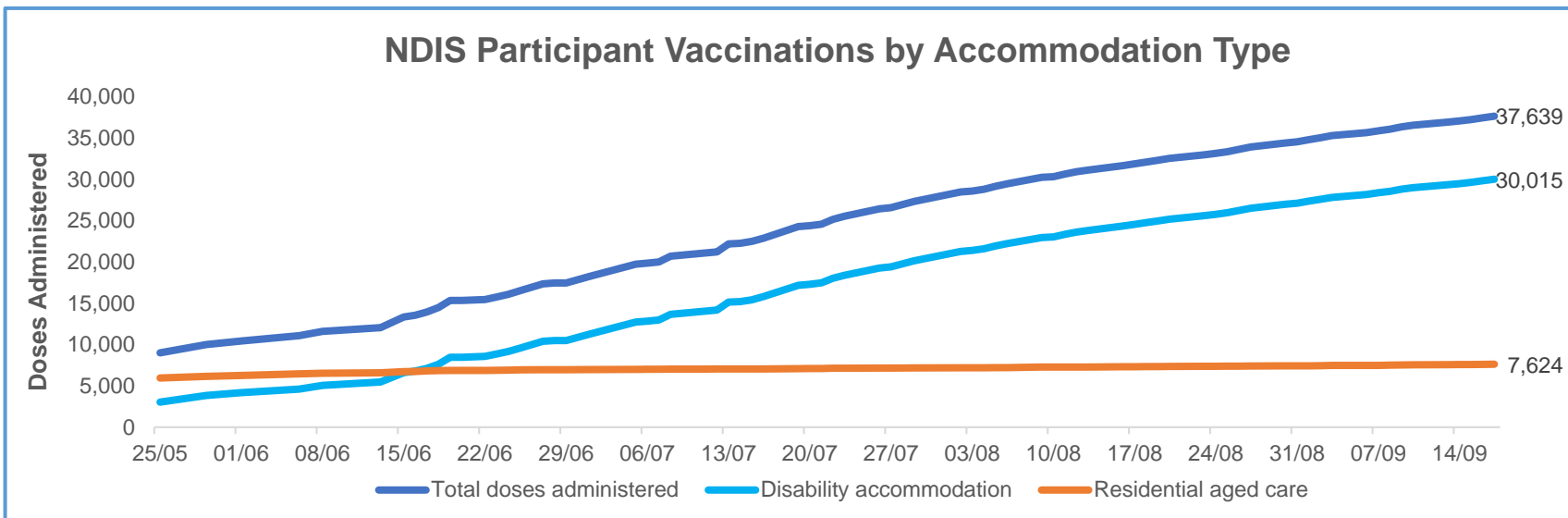
22,705

doses administered to persons residing in other territories or with missing residential information

Data as at:
17 September 2021*

Vaccination rate of people with disability and the disability workforce

Phase 1a – People with disability living in shared accommodation



	Total people with at least one dose	People fully vaccinated	Total number of individuals in cohort	Total doses administered	% People with at least one dose	% People fully vaccinated
NDIS participants living in shared accommodation **	20,128	17,511	27,293	37,639	73.7%	64.2%
NDIS screened workers ***	133,021	101,264	189,644	234,285	70.1%	53.4%

* Updates are available Monday to Friday on participants, and bi-weekly for workers, numbers may be up to four days old.

** Shared accommodation means two or more people with disability living in shared residential accommodation and NDIS participants living in Residential Aged Care accommodation as per the eligibility criteria of Phase 1a.

*** Total number of workers within the NDIS Commission Worker Screening database who have ever been successfully screened and linked to an NDIS registered provider or participant.

Source: Linkage between National Disability Insurance Agency data, NDIS Quality and Safeguards Commission data and the Australian Immunisation Register.

Residential aged care vaccination rollout

Residential aged care facilities status

100% Commonwealth facilities visited (2,569 planned sites)

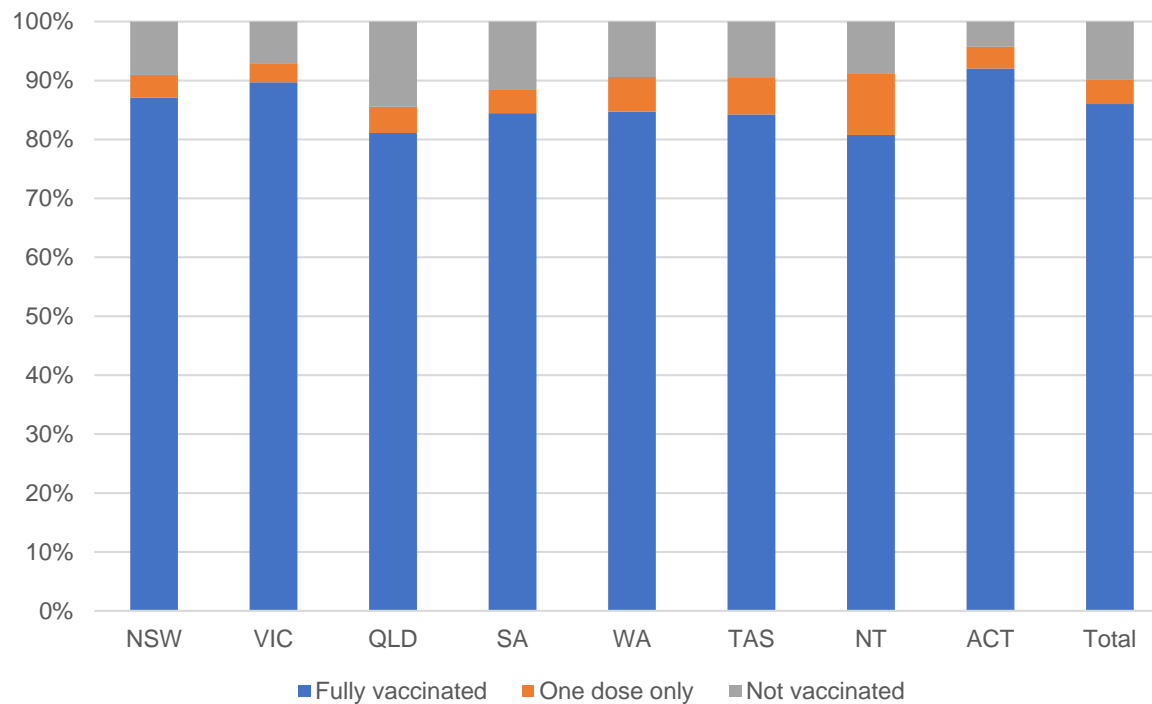
160,278 People fully vaccinated

90.1% Participation rate

Australia's COVID-19 Vaccine Roadmap

Data as at:
19 September 2021*

Aged care resident vaccinations



Aged care worker vaccinations

Jurisdictions	Total workers with at least one dose	Workers fully vaccinated	% Workers with at least one dose	% Workers fully vaccinated
NSW	78,423	65,567	98.4%	82.2%
VIC	69,926	58,058	97.9%	81.3%
QLD	46,991	36,309	97.8%	75.6%
SA	25,963	21,150	97.9%	79.7%
WA	23,072	16,481	98.9%	70.6%
TAS	7,381	6,106	99.1%	82.0%
NT	797	761	99.3%	94.8%
ACT	2,919	2,468	99.0%	83.7%
Total	255,472	206,900	98.2%	79.5%

Source: My Aged Care Portal staff vaccination progress

**Resident vaccination information is reported manually by service providers

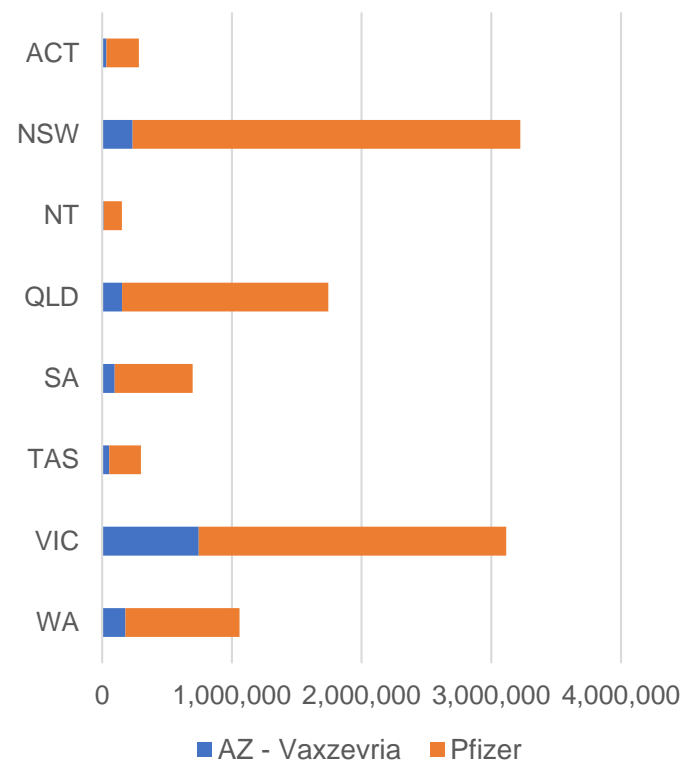
*Status updates are provided by facilities at least once per week. Reporting is updated Monday to Friday to encompass different facility updates being made on different days.

Data is sourced directly from Aged Care Service Providers and is not drawn or closely aligned with data from AIR due to inconsistencies and potential lags in uploading of records.

Data as at:
19 Sep 2021

Jurisdiction administered

Total vaccine doses administered in State and Territory clinics as at 19 September



10,575,326 total vaccine doses administered
in State and Territory clinics as at 19 September
+ **113,235** recorded in the last 24 hours
+ **875,874** recorded in the last 7 days

NSW
3,223,742
(+22,510 daily
increase)

VIC
3,115,745
(+39,329 daily
increase)

QLD
1,744,232
(+28,691 daily
increase)

WA
1,059,317
(+8,693 daily
increase)

TAS
299,559
(+2,802 daily
increase)

SA
697,770
(+6,455 daily
increase)

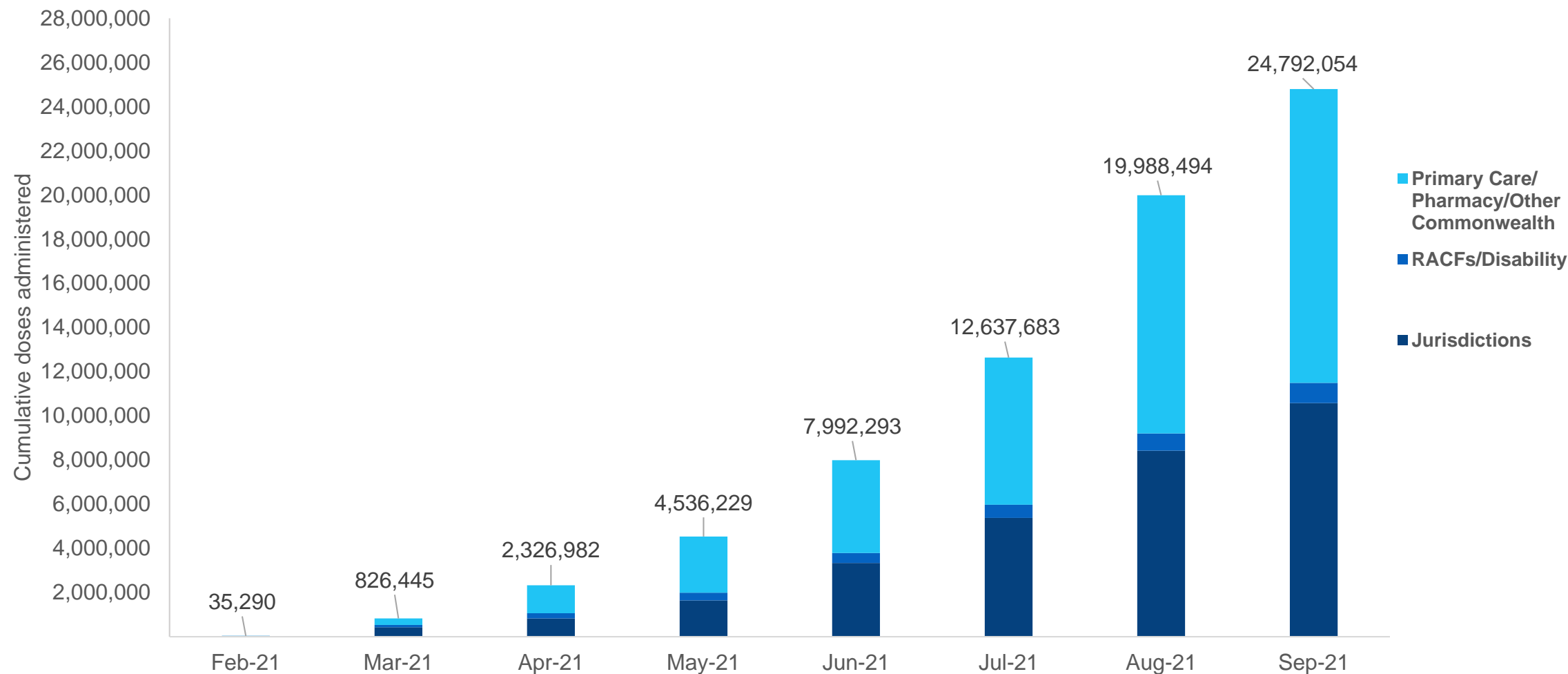
ACT
282,923
(+3,860 daily
increase)

NT
152,038
(+895 daily
increase)

*Sourced from the Australian Immunisation Register and self-reported data. Numbers are calculated as difference in daily cumulative reported numbers to allow for historical corrections in all self-reported data sources.

Cumulative doses administered by channel

Data as at:
19 Sep 2021



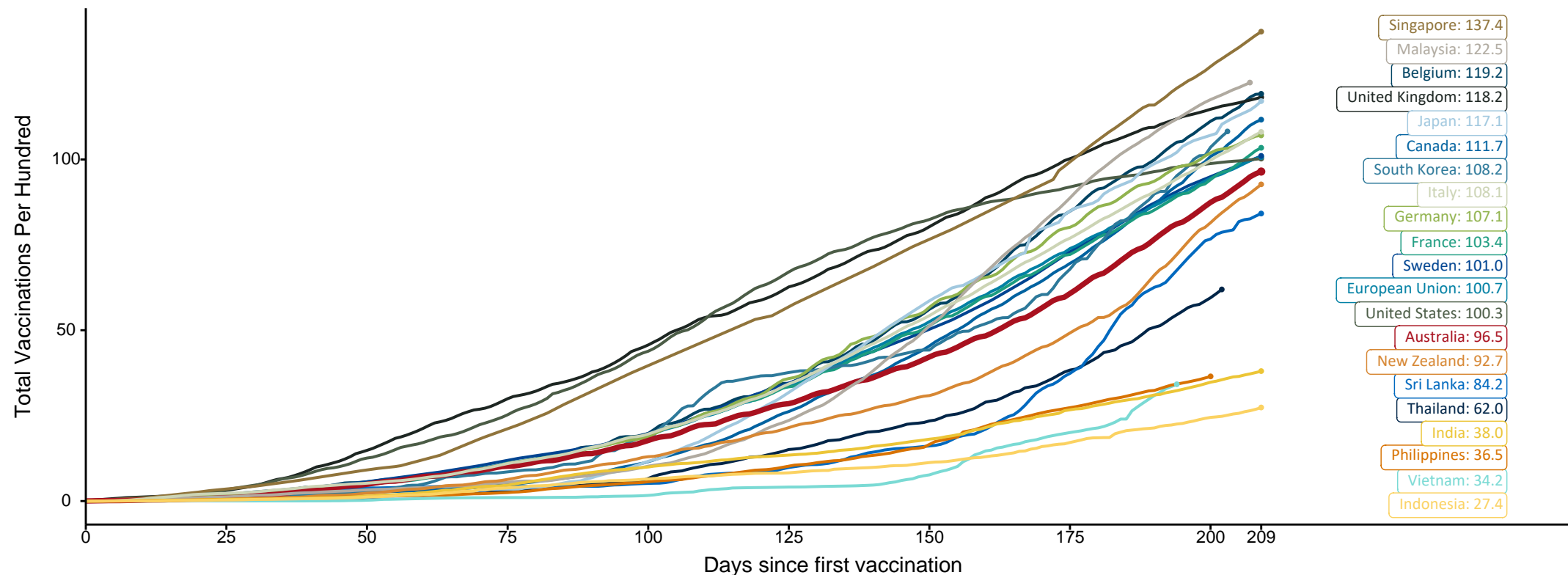
Source: Australian Immunisation Register

Doses at equivalent stages of rollout (Day 209)

Data as at:
19 Sep 2021

The x-axis is truncated at the length of Australia's vaccination program. Countries with intermittent reporting have had their doses per 100 imputed to Australia's current stage of rollout. Israel excluded as it is beyond scale of the graph

Cumulative doses administered (19 Sep): **24,792,054**

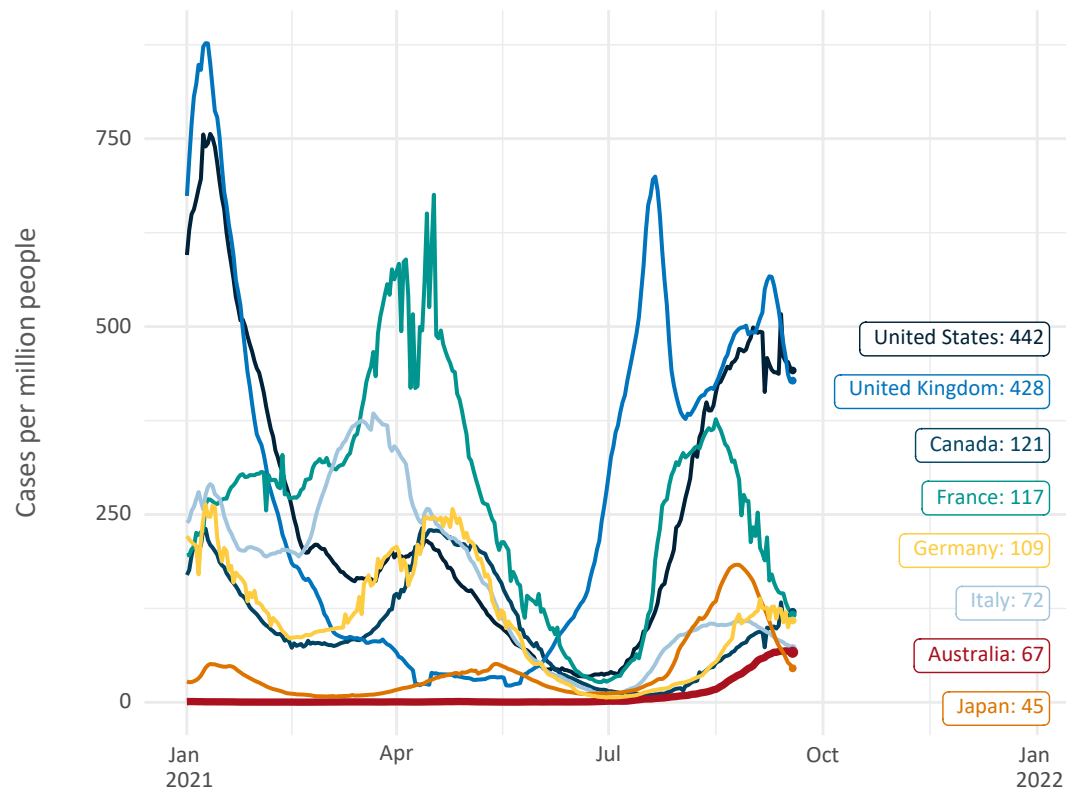


Note: From 15 September 2021, data for Australia includes all doses administered to people 12 and over. Prior to 15 September, data was for 16 and over
Source: Department of Health (Australia), Our World in Data (international)
Latest data: 19 September

International data – COVID-19

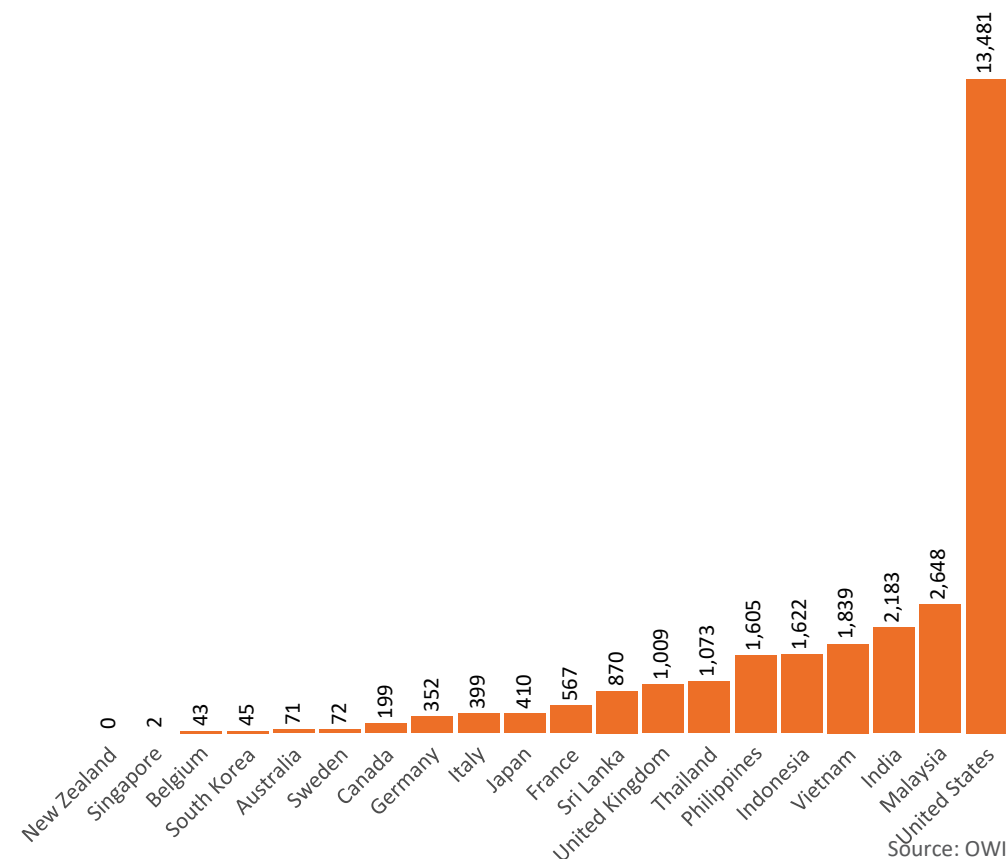
Data as at:
19 Sep 2021

New daily cases per million in 2021, Australia and G7 countries
Smoothed - 7 day average



Source: OWID
Data downloaded: 20 Sep 2021 11:54
Latest data: 18 Sep 2021

COVID-19 deaths in past 7 days - Australia and select countries



Source: OWID
Data downloaded: 20 Sep 2021 11:54
Latest data: 19 Sep 2021

Pandemic Response Payments

Australia's COVID-19
Vaccine Roadmap

Data as at midnight:
19 Sep 2021



2.08 million

People have received at least one COVID
Disaster Payment (including ISP200)

\$8.23 billion

Paid Out as at 19 Sep 2021

3.51 million

Claims granted across
three different payments



93%

of Claims
Received Digitally



COVID Disaster Payment:

3.46 million claims received - 1.92 million individuals paid a total of \$7.99 billion.

\$200 Income Support Payment:

208,000 claims received - 159,000 individuals paid a total of \$147.65 million.

Pandemic Leave Disaster Payment:

64,000 claims received - 55,000 individuals paid a total of \$87.24 million.



**THREE
PAYMENTS
AVAILABLE**

COVID Disaster Payment

assisting during a lockdown
event in a Commonwealth
hotspot.

Income Support Payment \$200

for income support
recipients who lost at
least 8 hours of work.

Pandemic Leave Disaster Payment

for those who have
to self-isolate,
quarantine or care.

For more information visit:
servicesaustralia.gov.au

COVID-19 DISASTER PAYMENTS

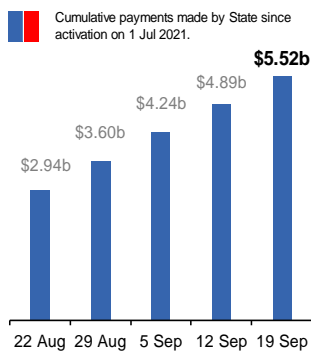
New South Wales

Active lockdown since 24 Jun

**1.04m people have
received at least one
COVID Disaster Payment.**

**\$5.52b paid out as at
19 Sep 2021.**

**\$632m paid in initial and
reoccurring payments in the
week ending 19 Sep 2021.**



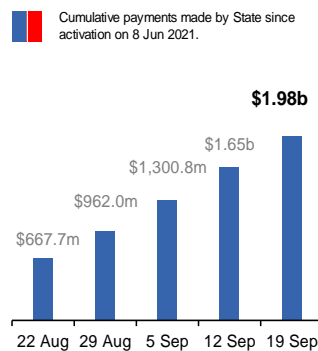
Victoria

Active lockdown (#6) since 6 Aug

**531,000 people have
received at least one
COVID Disaster Payment.**

**\$1.98b paid out as at
19 Sep 2021.**

**\$338m paid in initial and
reoccurring payments in the
week ending 19 Sep 2021.**



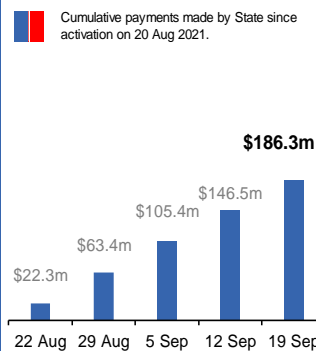
Australian Capital Territory

Active lockdown since 12 Aug

**61,000 people have
received at least one
COVID Disaster Payment.**

**\$186.3m paid out as at
19 Sep 2021.**

**\$40m paid in initial and
reoccurring payments in the
week ending 19 Sep 2021.**



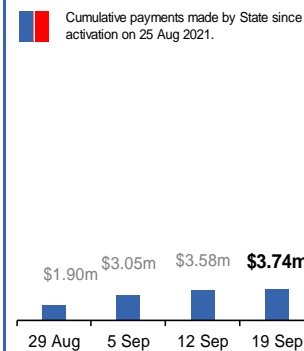
Northern Territory

Lockdown from 18 – 20 Jul
Claiming period ends 13 Sep

**5,767 people have
received at least one
COVID Disaster Payment.**

**\$3.74m paid out as at
19 Sep 2021.**

**\$157,000 paid in initial
payments in the week
ending 19 Sep 2021.**



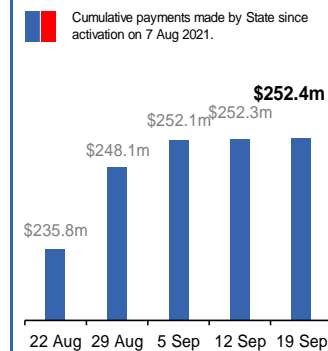
Queensland

Lockdown from 31 Jul – 11 Aug
Claiming period ended 28 Aug

**196,000 people have
received at least one
COVID Disaster Payment.**

**\$252.4m paid out as at
19 Sep 2021.**

**\$87,000 paid in initial
and reoccurring payments in the
week ending 19 Sep 2021.**



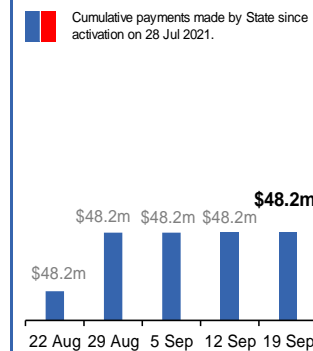
South Australia

Lockdown from 21 – 27 Jul
Claiming period ended 17 Aug

**86,000 people have
received at least one
COVID Disaster Payment.**

**\$48.2m paid out as at
19 Sep 2021.**

**\$8,000 paid in initial
payments in the week
ending 19 Sep 2021.**



Administration and Utilisation

Doses as at Week 30

	Ordered (including coming week)	Available (delivered weeks 1-29, until 12 September)	Administered (weeks 1-30 until 19 September)	Available minus Administered	Estimated Dose Utilisation % (see note)
NSW	3,798,430	3,538,690	3,223,742	314,948	Fully utilised
VIC	3,607,700	3,246,110	3,115,745	130,365	Fully utilised
QLD	2,183,280	1,978,620	1,744,232	234,388	98%
WA	1,196,428	1,073,518	1,059,317	14,201	Fully utilised
SA	889,710	809,700	697,770	111,930	96%
TAS	344,740	331,870	299,559	32,311	Fully utilised
NT	217,034	204,164	152,038	52,126	84%
ACT	310,658	283,498	282,923	575	Fully utilised
Jurisdiction delivered total	12,547,980	11,466,170	10,575,326	890,844	Fully utilised
Commonwealth Aged Care & Disability	962,116	934,468	918,023	16,445	N/A
Commonwealth Primary Care	18,398,774	17,179,454	13,298,705	3,880,749	87%
Total	31,908,870	29,580,092	24,792,054	4,788,038	94%

About this data

- Ordered – Total doses delivered to sites. Based on logistics provider data. This figure includes doses allocated for administration in the coming week.
- Available – total doses that could have been administered to date, less doses re-distributed from States & Territories to Primary Care or Aged Care & Disability (i.e. does not include those deliveries recently received, and intended for use in the coming week).
- Administered – Doses administered as at 19 September 2021.
- The dose utilisation is calculated based on the total doses administered and a small % wastage in line with international standards in relation to total available doses.
- For Aged Care & Disability, the doses available for administration is for the full period (Weeks 1-30).
- Aged Care & Disability utilisation is not provided as the in-reach rollout is demand-based, with vaccines ordered based on resident numbers.