



Australian Government
Operation COVID Shield

COVID-19 Vaccine Roll-out

19 September 2021

Data as at:
18 Sep 2021

Total vaccine doses



24,619,474 total vaccine
doses administered nationally as at 18 September
+227,036 recorded in the last 24 hours



14,777,650

people have had at least one
dose

71.7%

of people over the age of 16
have had at least one dose



9,624,053

people are fully vaccinated

46.7%

of people over the age of 16 are
fully vaccinated

NSW
8,884,534
(+81,251 daily
increase)

VIC
6,378,585
(+70,309 daily
increase)

QLD
4,265,436
(+36,520 daily
increase)

WA
2,171,736
(+16,056 daily
increase)

TAS
543,000
(+4,872 daily
increase)

SA
1,537,040
(+10,660 daily
increase)

ACT
587,983
(+6,260 daily
increase)

NT
251,160
(+1,108 daily
increase)

*Administration state breakdown indicates state in which a vaccine was administered

**Overall dose count includes instances of more than two doses per person in a small number of cases.

Data as at:
18 Sep 2021

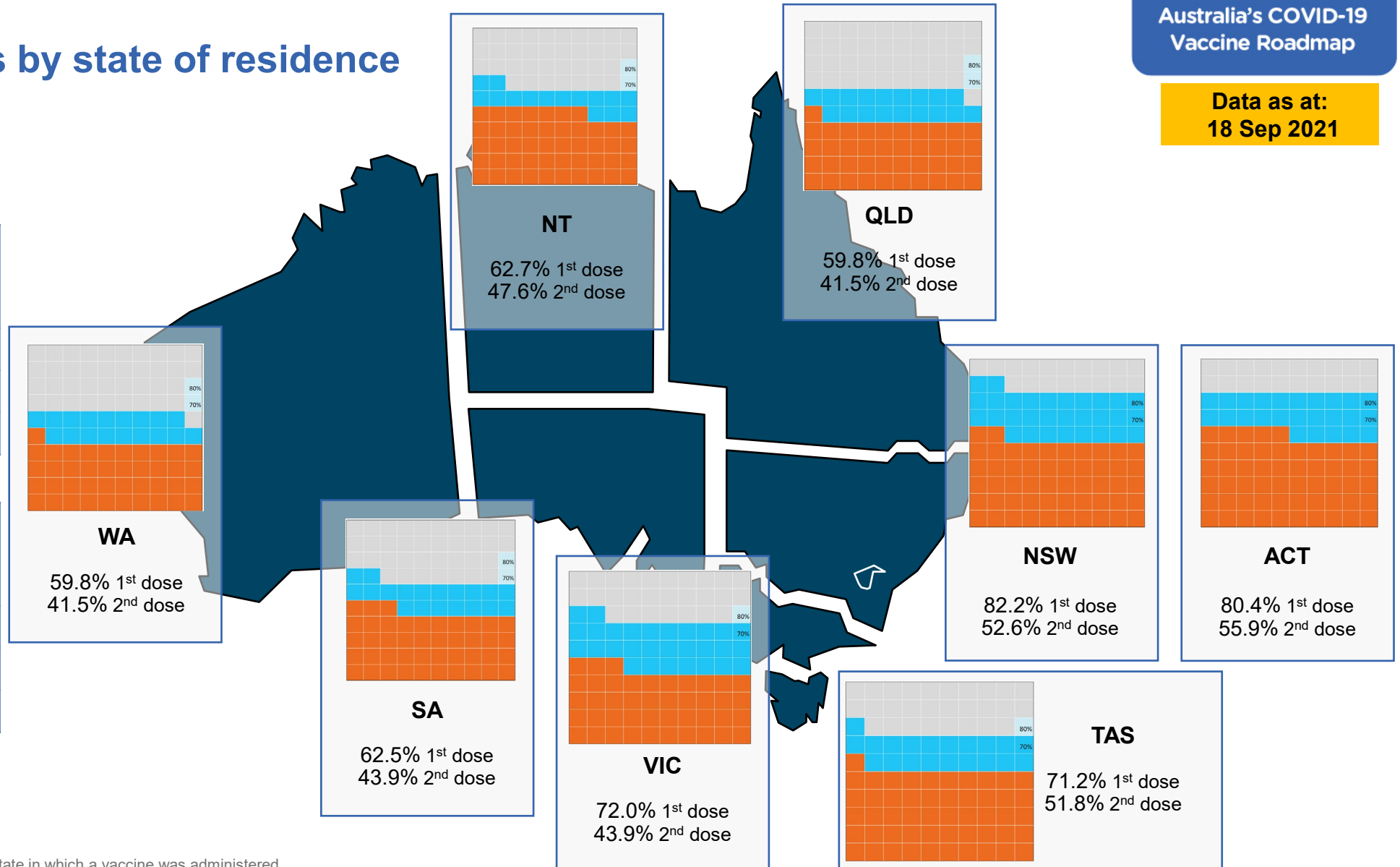
Vaccinations by state of residence

First doses

Age	Today	4 weeks ago	8 weeks ago
16+	71.7%	53.2%	38.6%
50+	85.9%	75.8%	63.7%
70+	92.3%	86.1%	78.8%

Fully vaccinated

Age	Today	4 weeks ago	8 weeks ago
16+	46.7%	30.7%	16.7%
50+	65.6%	45.1%	22.7%
70+	74.0%	58.2%	37.8%



*Residential state may differ from the state in which a vaccine was administered

Commonwealth and Jurisdiction vaccine doses administered

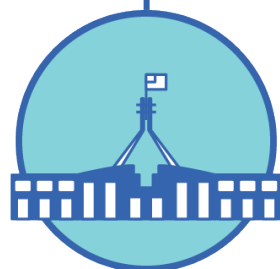
Data as at:
18 Sep 2021



24,619,474 total vaccine
doses administered nationally as at 18 September
+ 227,036 recorded in the last 24 hours



10,462,091
doses administered by state
and territory facilities
+ 116,730
recorded in the last 24 hours



14,157,383
doses administered by
commonwealth facilities
+ 110,306
recorded in the last 24 hours

13,244,344 total vaccine doses
administered in primary care settings
913,039 total vaccine doses
administered in aged care and disability
settings

NSW	Jurisdictions	Commonwealth
Cumulative	3,201,232	5,683,302
Daily increase	29,576	51,675

VIC	Jurisdictions	Commonwealth
Cumulative	3,076,416	3,302,169
Daily increase	40,312	29,997

QLD	Jurisdictions	Commonwealth
Cumulative	1,715,541	2,549,895
Daily increase	23,075	13,445

WA	Jurisdictions	Commonwealth
Cumulative	1,050,624	1,121,112
Daily increase	9,509	6,547

TAS	Jurisdictions	Commonwealth
Cumulative	296,757	246,243
Daily increase	2,762	2,110

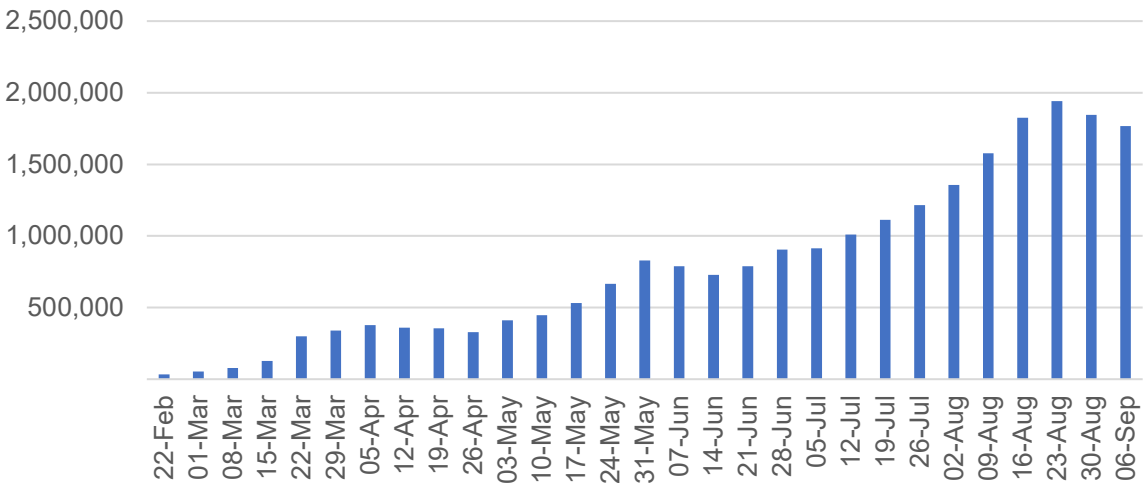
SA	Jurisdictions	Commonwealth
Cumulative	691,315	845,725
Daily increase	6,652	4,008

ACT	Jurisdictions	Commonwealth
Cumulative	279,063	308,920
Daily increase	4,001	2,259

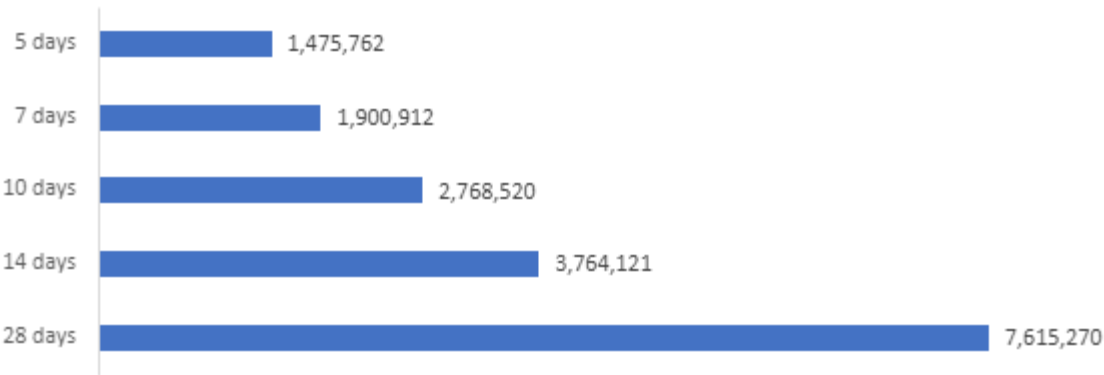
NT	Jurisdictions	Commonwealth
Cumulative	151,143	100,017
Daily increase	843	265

Vaccine milestone charts

Jabs in arms by week



Doses reported

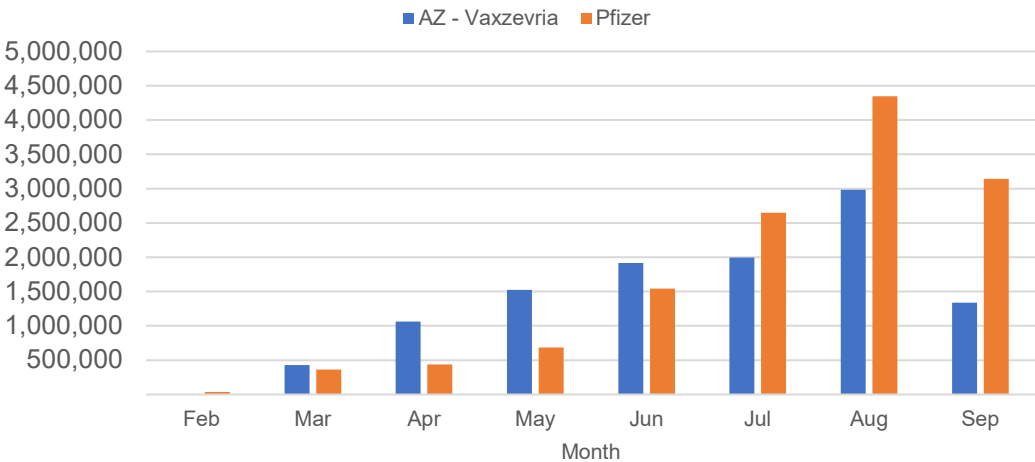


*Sourced from the Australian Immunisation Register. Please note last 28 days includes aged care readjustment of 6,895 doses.

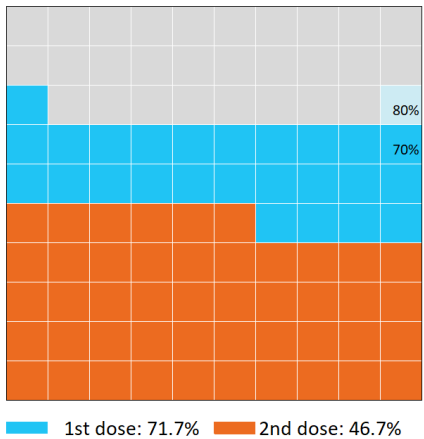
Data as at:
18 Sep 2021

Australia's COVID-19
Vaccine Roadmap

Doses by administration month and vaccine type



Eligible population percentage coverage



*Each square represents 1% of the national population. Squares are filled as milestones are achieved.

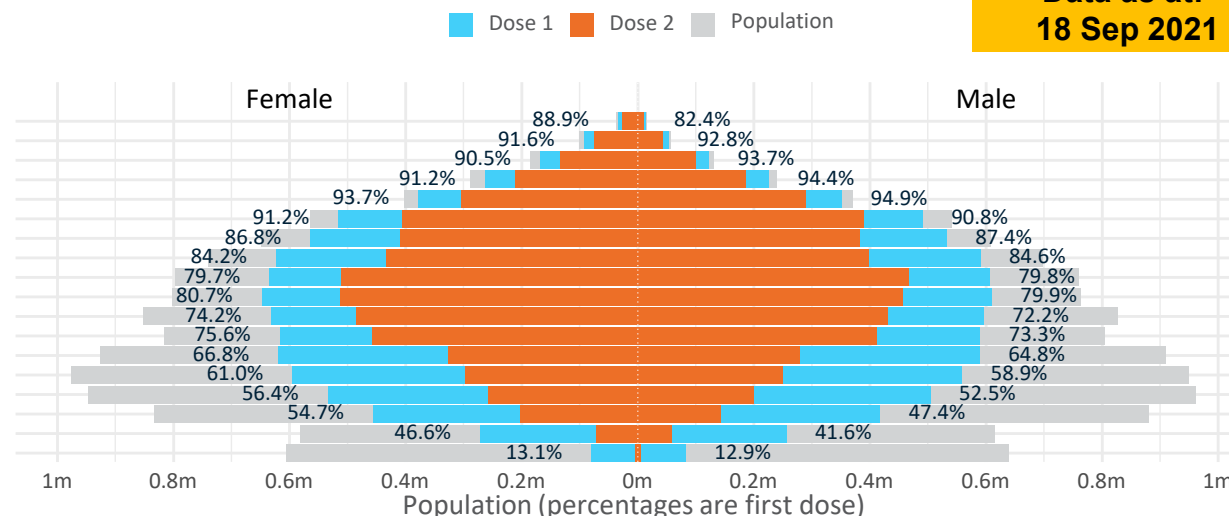
Doses by age and sex

First and second doses by age and sex

Australia's COVID-19
Vaccine Roadmap

Data as at:
18 Sep 2021

Age	Dose 1	Dose 2
95+	46,117 (87.2%)	37,418 (70.7%)
90-94	145,968 (92.1%)	117,817 (74.4%)
85-89	290,568 (91.9%)	232,903 (73.7%)
80-84	489,888 (92.7%)	396,270 (75.0%)
75-79	730,020 (94.3%)	592,223 (76.5%)
70-74	1,006,807 (91.1%)	796,201 (72.1%)
65-69	1,096,964 (87.2%)	791,788 (62.9%)
60-64	1,213,892 (84.5%)	830,314 (57.8%)
55-59	1,241,700 (79.8%)	976,981 (62.8%)
50-54	1,258,168 (80.4%)	969,817 (62.0%)
45-49	1,228,929 (73.3%)	917,247 (54.7%)
40-44	1,207,588 (74.5%)	869,383 (53.7%)
35-39	1,210,746 (66.0%)	606,757 (33.1%)
30-34	1,159,613 (60.3%)	550,099 (28.6%)
25-29	1,046,114 (54.9%)	460,161 (24.1%)
20-24	877,428 (51.2%)	347,174 (20.3%)
16-19	527,140 (44.1%)	131,500 (11.0%)
12-15	162,216 (13.0%)	9,032 (0.7%)



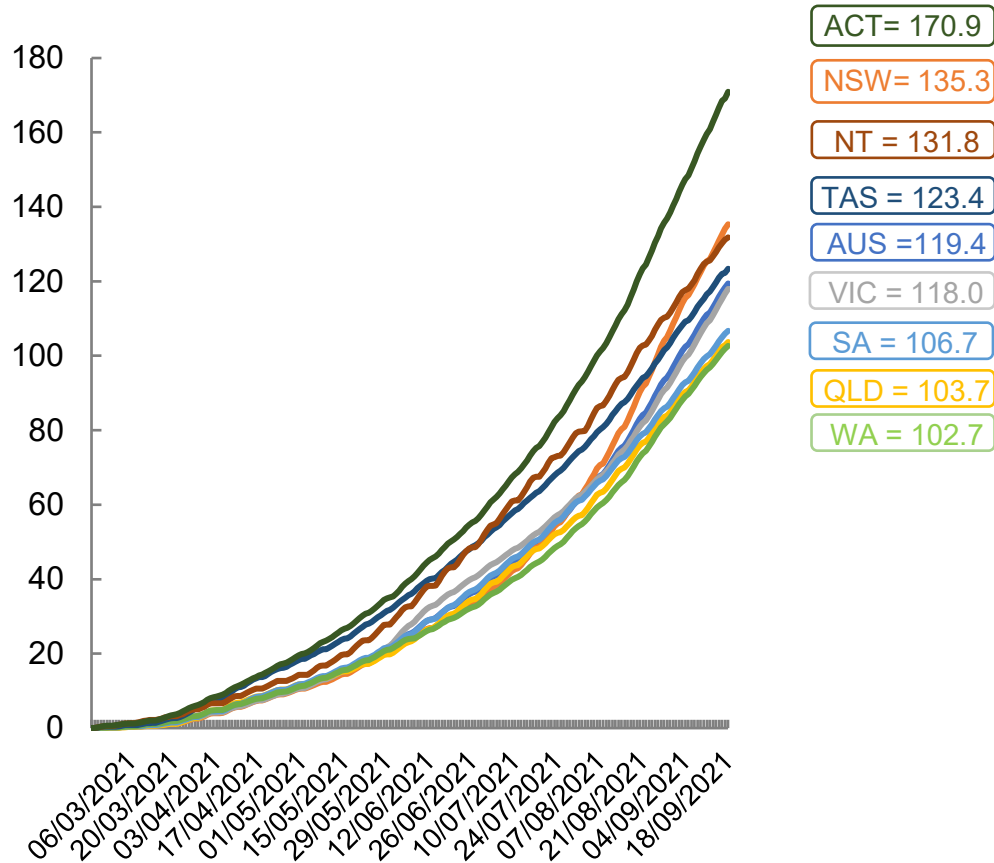
	AUS	ACT	NSW	NT	QLD	SA	TAS	VIC	WA
16 and over - dose 1	14,777,650	276,455	5,398,633	119,513	2,458,280	900,826	313,434	3,891,942	1,265,487
16 and over - dose 2	9,624,053	192,437	3,456,741	90,632	1,705,651	631,878	227,927	2,371,435	877,203
16 and over - population	20,619,959*	344,037	6,565,651	190,571	4,112,707	1,440,400	440,172	5,407,574	2,114,978
16 and over % with dose 1	71.67%	80.36%	82.23%	62.71%	59.77%	62.54%	71.21%	71.97%	59.83%
16 and over % with dose 2	46.67%	55.93%	52.65%	47.56%	41.47%	43.87%	51.78%	43.85%	41.48%
50 and over - dose 1	7,520,092	125,462	2,561,001	46,619	1,403,895	543,200	187,090	1,908,292	697,874
50 and over - dose 2	5,741,732	104,254	1,937,965	36,948	1,056,881	402,051	149,041	1,492,540	532,329
50 and over - population	8,749,703	127,802	2,807,793	62,280	1,758,855	674,384	220,036	2,211,211	885,370
50 and over % with dose 1	85.95%	>95%	91.21%	74.85%	79.82%	80.55%	85.03%	86.30%	78.82%
50 and over % with dose 2	65.62%	81.57%	69.02%	59.33%	60.09%	59.62%	67.73%	67.50%	60.13%
70 and over - dose 1	2,709,368	41,444	915,900	10,066	516,170	213,864	71,253	676,265	244,887
70 and over - dose 2	2,172,832	35,139	734,718	8,077	412,614	163,302	58,718	551,169	194,817
70 and over - population	2,934,706	39,946	962,606	12,343	577,767	240,514	77,155	743,519	280,281
70 and over % with dose 1	92.32%	>95%	95.15%	81.55%	89.34%	88.92%	92.35%	90.95%	87.37%
70 and over % with dose 2	74.04%	87.97%	76.33%	65.44%	71.42%	67.90%	76.10%	74.13%	69.51%
12 to 15 - dose 1	162,216	2,191	77,322	2,883	20,371	3,812	1,626	46,586	6,390
12 to 15 - dose 2	9,032	272	4,341	325	2,083	150	104	1,368	315
12 to 15 - population	1,243,990	19,693	390,330	13,060	270,146	82,747	26,308	308,611	132,869
12 to 15 % with dose 1	13.04%	11.13%	19.81%	22.08%	7.54%	4.61%	6.18%	15.10%	4.81%
12 to 15 % with dose 2	0.73%	1.38%	1.11%	2.49%	0.77%	0.18%	0.40%	0.44%	0.24%

*National population will not equal sum of listed jurisdictions due to a small number of people counted in national population residing in some 'other' territories. Sum of state doses will not add to national total as some records are unable to be geocoded to a State or Territory.

Doses sourced from Australian Immunisation Register, population from ABS ERP June 2020

Vaccinations by location

Cumulative total doses administered vs state populations*

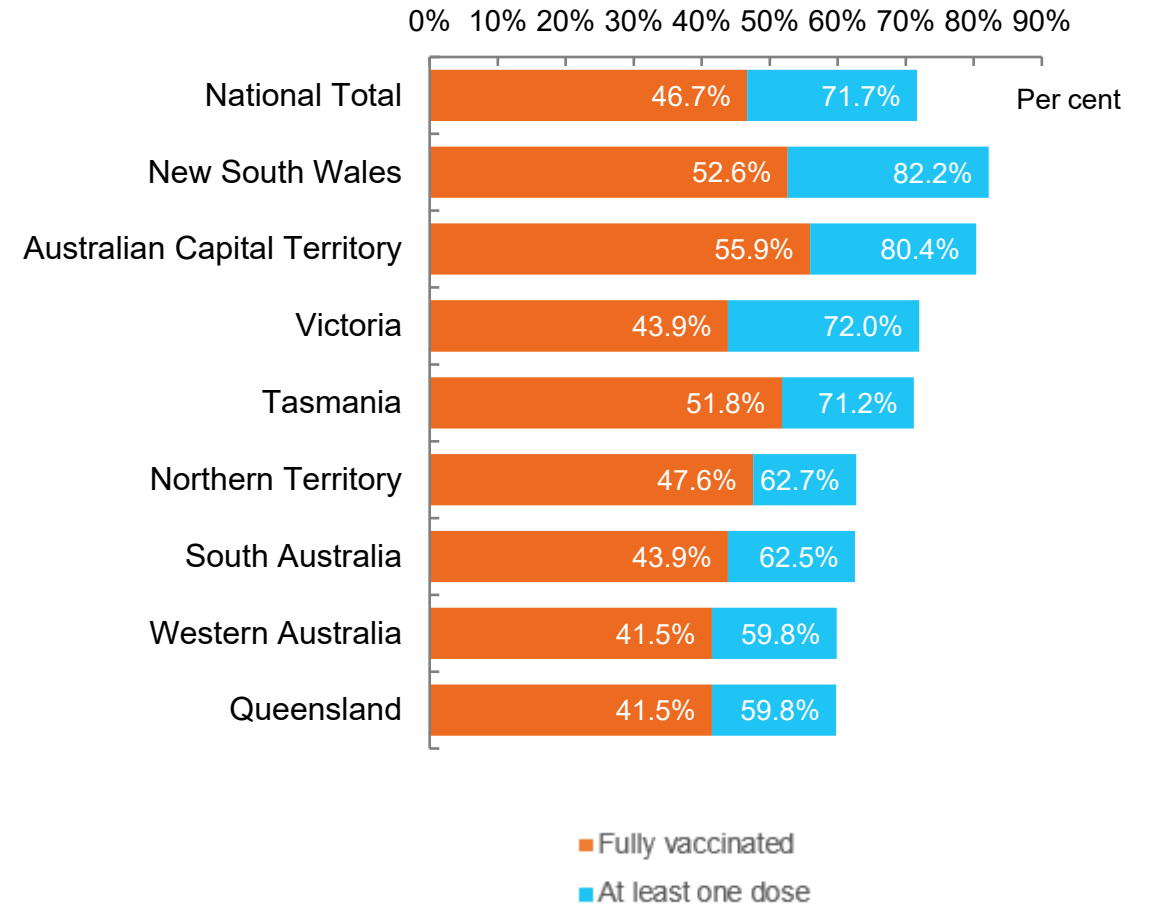


*Not an indication of percentage vaccinated, numbers will exceed 100 due to multiple doses required per person of the population

Data as at:
18 Sep 2021

Australia's COVID-19
Vaccine Roadmap

First and Second Doses by state of residence



Aboriginal and Torres Strait Islander peoples

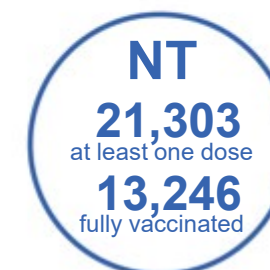
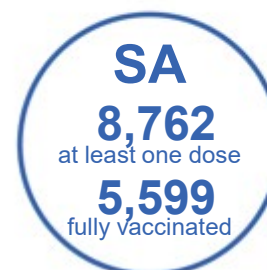
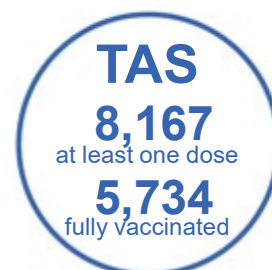
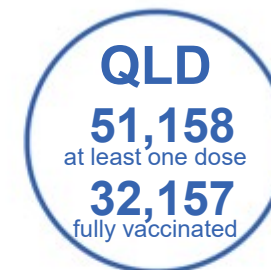
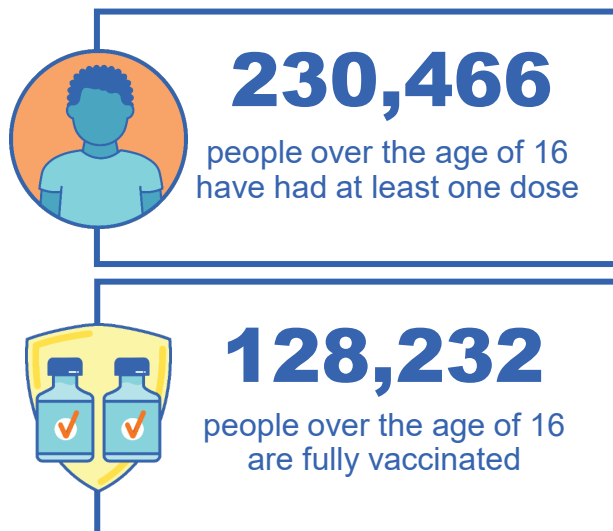
Number of people vaccinated

Data as at:
12 Sep 2021
Updated weekly

Australia's COVID-19
Vaccine Roadmap

166 Aboriginal community controlled health services (ACCHS)

0#	48	26	39	11	3	21	18
ACT	NSW	NT	QLD	SA	TAS	VIC	WA



6,321 people with at least one dose
3,052 people fully vaccinated

residing in other territories or with missing residential information

Source: Australian Immunisation Register

*Identifying as Aboriginal and Torres Strait Islander is optional and the estimated population may be under reported.

**Includes all Aboriginal and Torres Strait Islander peoples who have received a vaccination, not limited to those administered in an ACCHS setting

***Updated weekly.

****. Data corrections identified for Victoria have resulted in adjustments to the number of persons identifying as Aboriginal and Torres Strait Island

#ACCHS in the ACT are currently operating as a Commonwealth Vaccine Clinics so not included to avoid double counting

Data as at:
18 Sep 2021

Commonwealth primary care



Primary care vaccine administration sites

5,421	137	166	3,147
GPs	CVCs	ACCHS	Pharmacies



13,244,344 total vaccine doses administered primary care settings as at 18 September
+ 104,093 recorded in the last 24 hours

Primary care vaccinations by provider type

	Doses administered	Daily increase	7 day increase
General Practice* includes other Commonwealth	12,669,157	96,754	928,707
Pharmacy	575,187	7,339	87,290



70,694 doses administered to persons residing in other territories or with missing residential information

*General practice includes Commonwealth Vaccination Clinics, Aboriginal Community Health Centres, Royal Flying Doctor Service and other Commonwealth vaccination facilities

Source: Australian Immunisation Register

Data as at:
18 Sep 2021

Commonwealth aged care and disability doses administered



913,039

(+ 6,213 last 24 hours)

Total vaccine doses administered in aged care and disability facilities as at 18 September

Number of doses administered as part of the Commonwealth aged and disability care rollout

NSW
421,735
(+1,907 daily increase)

VIC
172,309
(+1,401 daily increase)

QLD
147,136
(+1,851 daily increase)

WA
61,317
(+569 daily increase)

TAS
16,391
(+87 daily increase)

SA
55,092
(+239 daily increase)

ACT
10,968
(+80 daily increase)

NT
5,442
(+25 daily increase)

*Sourced from the Australian Immunisation Register. Includes all persons vaccinated at participating residential aged care, disability and related industry settings.

**State level breakdown indicates the residential location and may not align to the state in which the vaccination occurred.

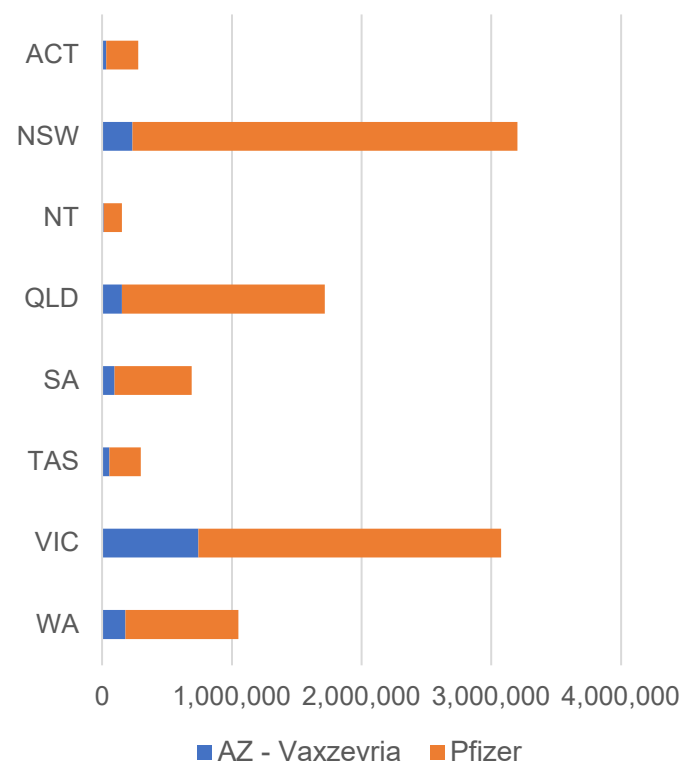
22,649

doses administered to persons residing in other territories or with missing residential information

Data as at:
18 Sep 2021

Jurisdiction administered

Total vaccine doses administered in State and Territory clinics as at 18 September



10,462,091 total vaccine doses administered
in State and Territory clinics as at 18 September
+ 116,730 recorded in the last 24 hours
+ 829,767 recorded in the last 7 days

NSW
3,201,232
(+29,576 daily increase)

VIC
3,076,416
(+40,312 daily increase)

QLD
1,715,541
(+23,075 daily increase)

WA
1,050,624
(+9,509 daily increase)

TAS
296,757
(+2,762 daily increase)

SA
691,315
(+6,652 daily increase)

ACT
279,063
(+4,001 daily increase)

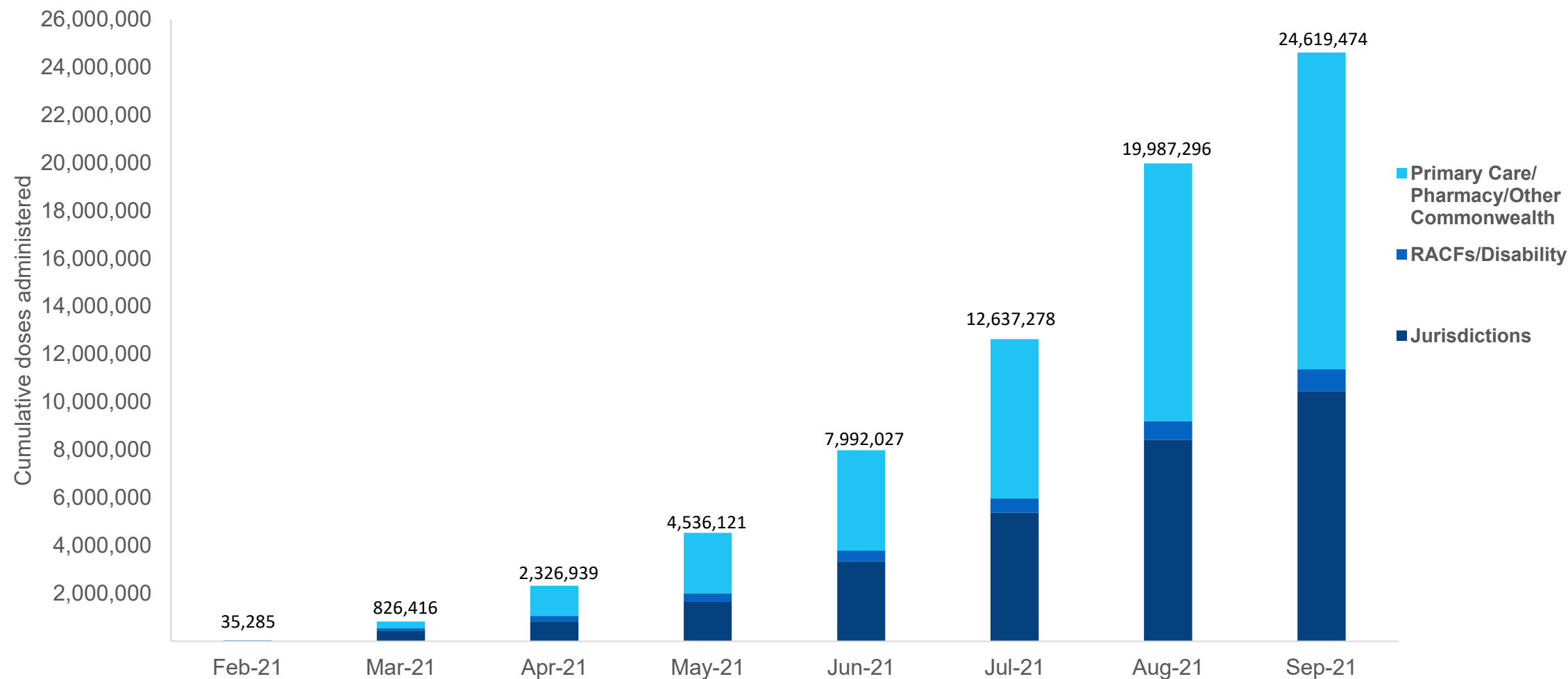
NT
151,143
(+843 daily increase)

*Sourced from the Australian Immunisation Register and self-reported data. Numbers are calculated as difference in daily cumulative reported numbers to allow for historical corrections in all self-reported data sources.

Source: Australian Immunisation Register

Cumulative doses administered by channel

Data as at:
18 Sep 2021



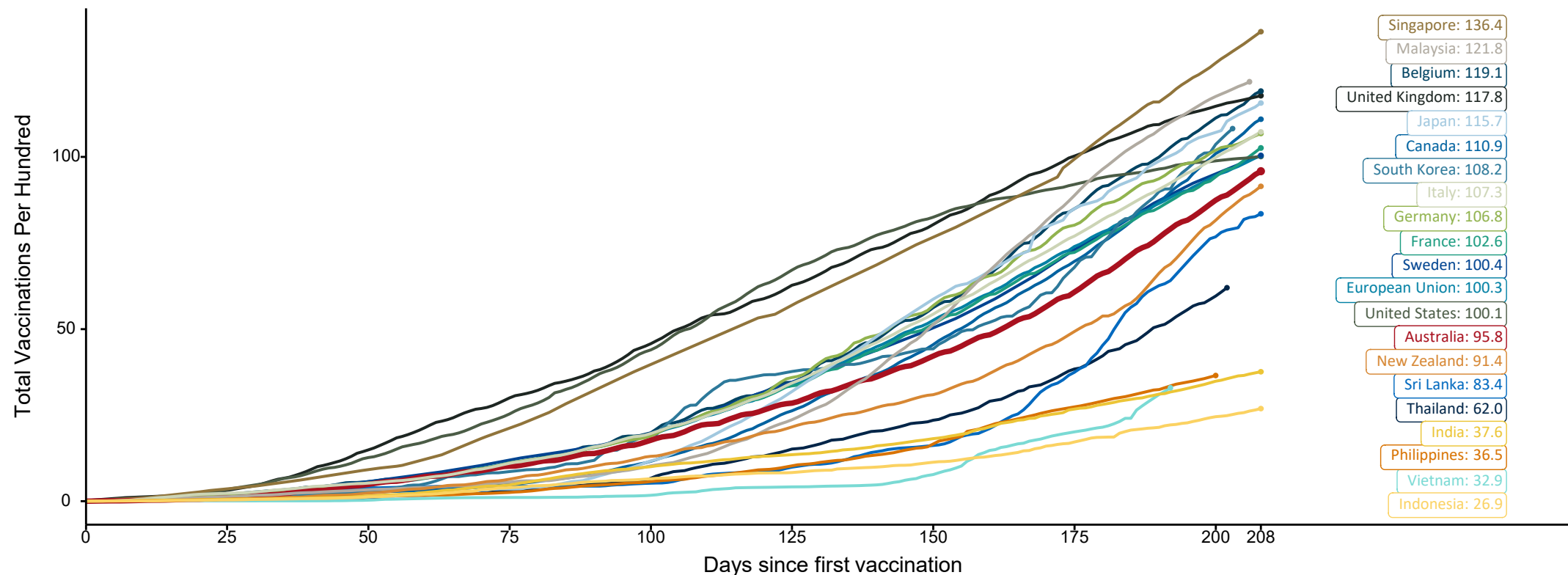
Source: Australian Immunisation Register

Doses at equivalent stages of rollout (Day 208)

Data as at:
18 Sep 2021

The x-axis is truncated at the length of Australia's vaccination program. Countries with intermittent reporting have had their doses per 100 imputed to Australia's current stage of rollout. Israel excluded as it is beyond scale of the graph

Cumulative doses administered (18 Sep): **24,619,474**

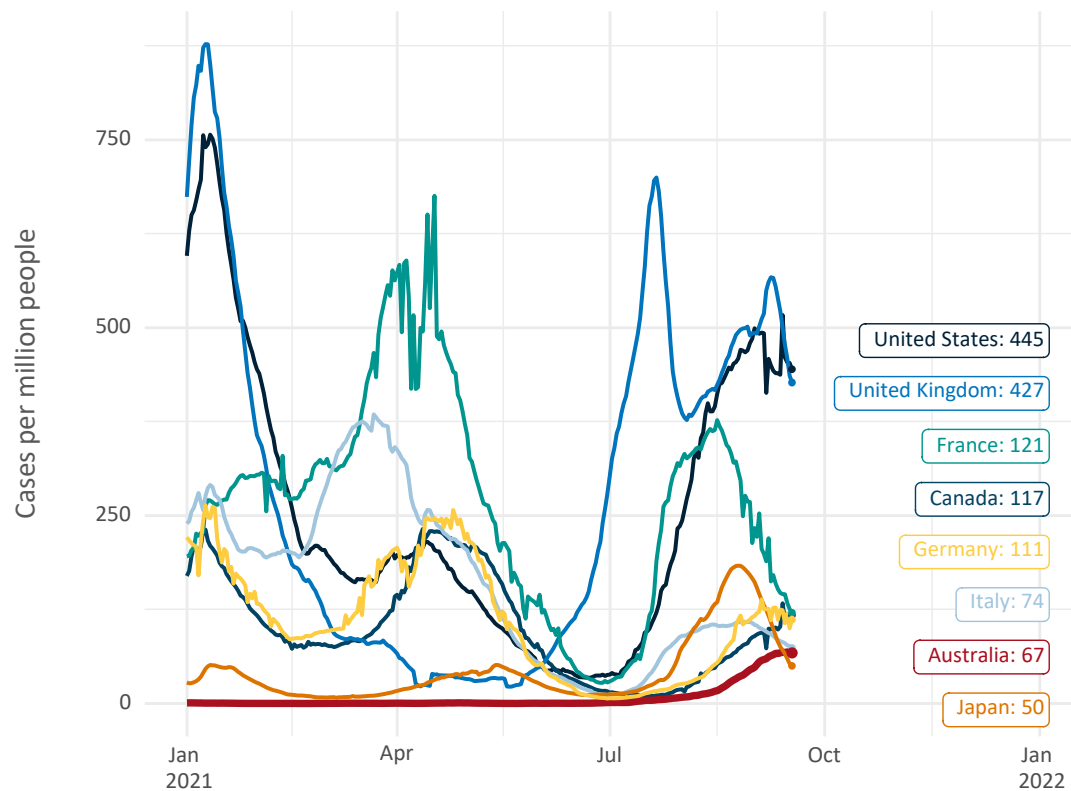


Note: From 15 September 2021, data for Australia includes all doses administered to people 12 and over. Prior to 15 September, data was for 16 and over
Source: Department of Health (Australia), Our World in Data (international)
Latest data: 18 September

International data – COVID-19

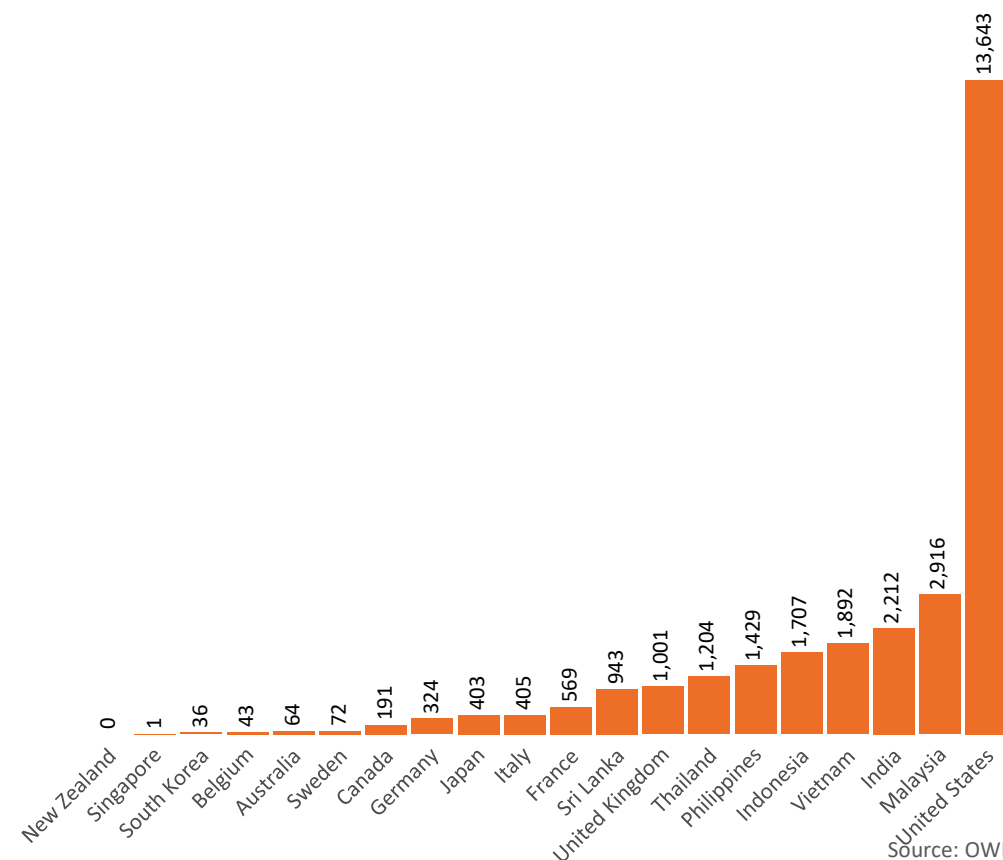
Data as at:
18 Sep 2021

New daily cases per million in 2021, Australia and G7 countries
Smoothed - 7 day average



Source: OWID
Data downloaded: 19 Sep 2021 09:45
Latest data: 17 Sep 2021


COVID-19 deaths in past 7 days - Australia and select countries



Source: OWID
Data downloaded: 19 Sep 2021 09:45
Latest data: 17 Sep 2021

Pandemic Response Payments

Data as at midnight:
18 Sep 2021



2.07 million
People have received at least one COVID Disaster Payment (including ISP200)

\$7.76 billion
Paid Out as at 18 Sep 2021


3.50 million
Claims granted across three different payments



93%
of Claims Received Digitally



COVID Disaster Payment:	3.45 million claims received - 1.91 million individuals paid a total of \$7.52 billion.
\$200 Income Support Payment:	207,000 claims received - 159,000 individuals paid a total of \$146.93 million.
Pandemic Leave Disaster Payment:	63,000 claims received - 55,000 individuals paid a total of \$87.17 million.



THREE PAYMENTS AVAILABLE


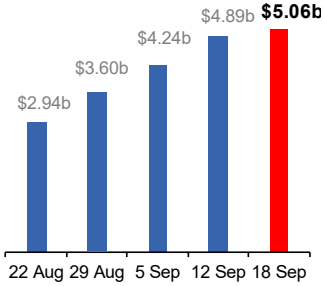

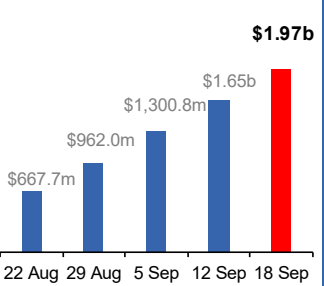

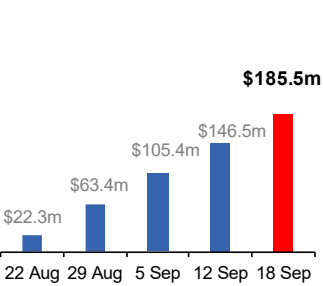

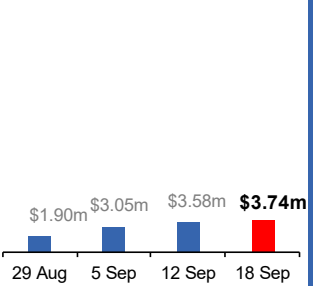

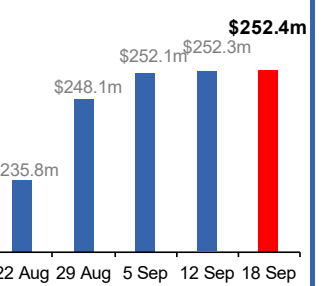

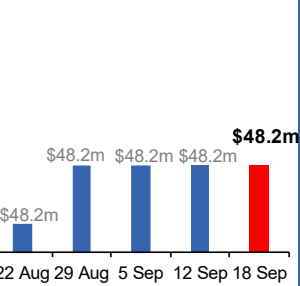
COVID Disaster Payment
assisting during a lockdown event in a Commonwealth hotspot.

Income Support Payment \$200
for income support recipients who lost at least 8 hours of work.

Pandemic Leave Disaster Payment
for those who have to self-isolate, quarantine or care.

For more information visit:
servicesaustralia.gov.au

COVID-19 DISASTER PAYMENTS

<p>New South Wales Active lockdown since 24 Jun</p> <p>1.04m people have received at least one COVID Disaster Payment.</p> <p>\$5.06b paid out as at 18 Sep 2021.</p> <p>\$647m paid in initial and reoccurring payments in the week ending 12 Sep 2021.</p> <p></p> 	<p>Victoria Active lockdown (#6) since 6 Aug</p> <p>529,000 people have received at least one COVID Disaster Payment.</p> <p>\$1.97b paid out as at 18 Sep 2021.</p> <p>\$346m paid in initial and reoccurring payments in the week ending 12 Sep 2021.</p> <p></p> 	<p>Australian Capital Territory Active lockdown since 12 Aug</p> <p>61,000 people have received at least one COVID Disaster Payment.</p> <p>\$185.5m paid out as at 18 Sep 2021.</p> <p>\$41m paid in initial and reoccurring payments in the week ending 12 Sep 2021.</p> <p></p> 	<p>Northern Territory Lockdown from 18 – 20 Jul Claiming period ends 13 Sep</p> <p>5,766 people have received at least one COVID Disaster Payment.</p> <p>\$3.74m paid out as at 18 Sep 2021.</p> <p>\$533,000 paid in initial payments in the week ending 12 Sep 2021.</p> <p></p> 	<p>Queensland Lockdown from 31 Jul – 11 Aug Claiming period ended 28 Aug</p> <p>196,000 people have received at least one COVID Disaster Payment.</p> <p>\$252.4m paid out as at 18 Sep 2021.</p> <p>\$194,000 paid in initial and reoccurring payments in the week ending 12 Sep 2021.</p> <p></p> 	<p>South Australia Lockdown from 21 – 27 Jul Claiming period ended 17 Aug</p> <p>86,000 people have received at least one COVID Disaster Payment.</p> <p>\$48.2m paid out as at 18 Sep 2021.</p> <p>\$18,000 paid in initial payments in the week ending 12 Sep 2021.</p> <p></p> 
--	--	--	---	---	---