



**Australian Government**  
**Operation COVID Shield**

# COVID-19 Vaccine Roll-out

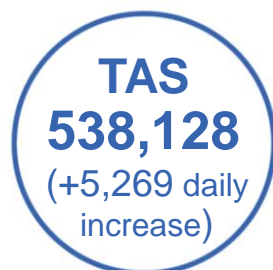
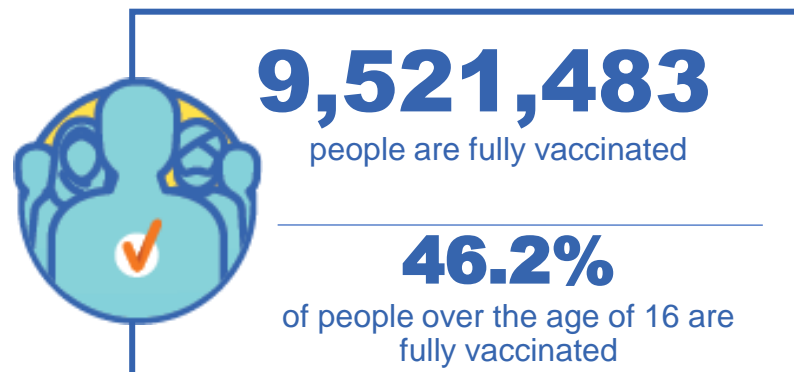
18 September 2021

Data as at:  
17 Sept 2021

## Total vaccine doses



**24,392,438** total vaccine  
doses administered nationally as at 17 September  
**+338,375** recorded in the last 24 hours



\*Administration state breakdown indicates state in which a vaccine was administered

\*\*Overall dose count includes instances of more than two doses per person in a small number of cases.

Source: Australian Immunisation Register

Data as at:  
17 Sept 2021

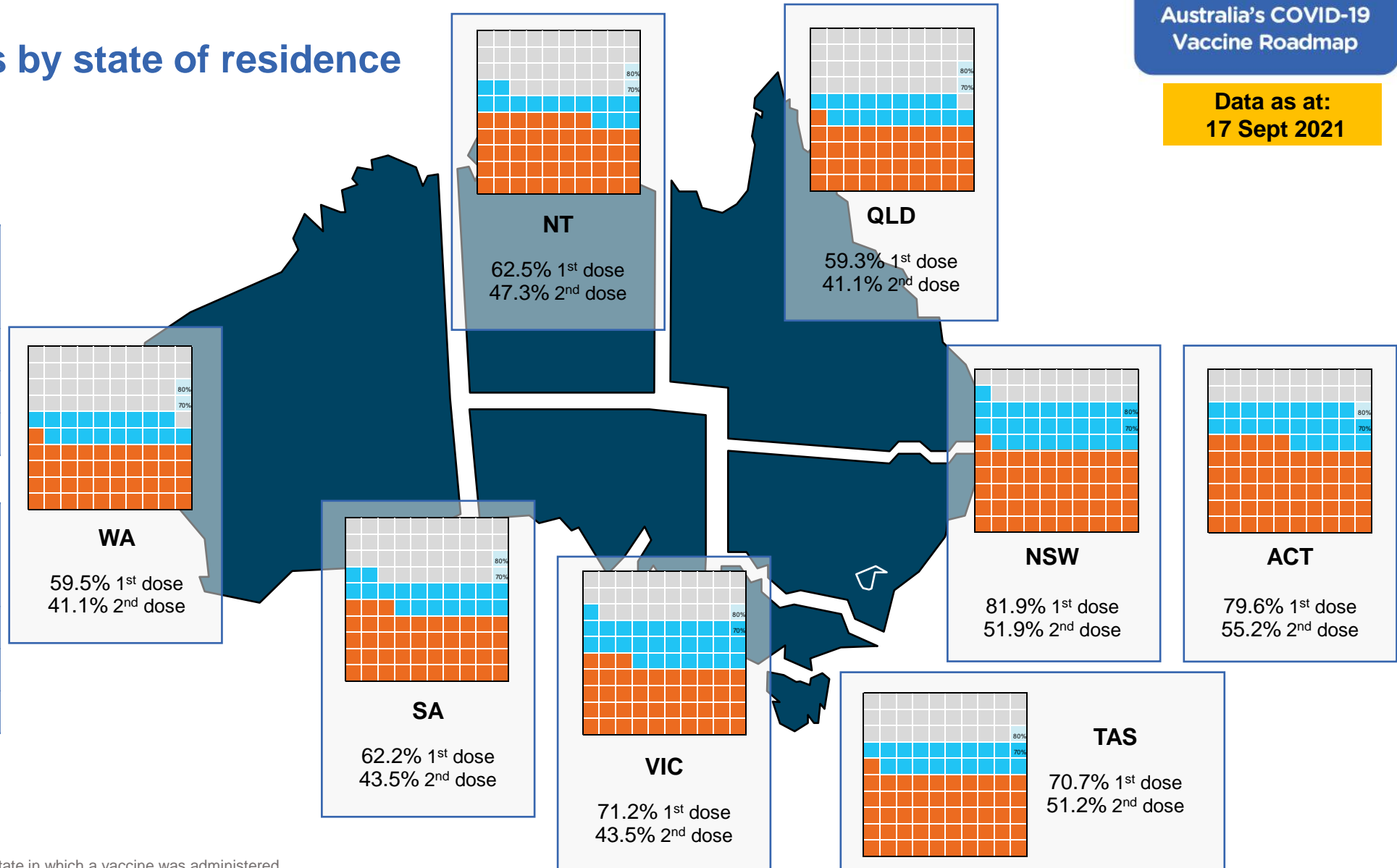
## Vaccinations by state of residence

### First doses

Age	Today	4 weeks ago	8 weeks ago
16+	71.2%	52.6%	38.3%
50+	85.7%	75.5%	63.3%
70+	92.2%	85.9%	78.7%

### Fully vaccinated

Age	Today	4 weeks ago	8 weeks ago
16+	46.2%	30.3%	16.4%
50+	65.3%	44.4%	22.3%
70+	73.8%	57.7%	37.3%



\*Residential state may differ from the state in which a vaccine was administered

## Commonwealth and Jurisdiction vaccine doses administered

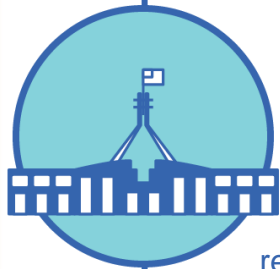
Data as at:  
17 Sept 2021



**24,392,438** total vaccine  
doses administered nationally as at 17 September  
**+ 338,375** recorded in the last 24 hours



**10,345,361**  
doses administered by state  
and territory facilities  
**+ 152,683**  
recorded in the last 24 hours



**14,047,077**  
doses administered by  
commonwealth facilities

**+ 185,692**  
recorded in the last 24 hours

**13,140,251** total vaccine doses  
administered in primary care settings

**906,826** total vaccine doses  
administered in aged care and disability settings

NSW	Jurisdictions	Commonwealth
Cumulative	3,171,656	5,631,627
Daily increase	45,608	94,856

VIC	Jurisdictions	Commonwealth
Cumulative	3,036,104	3,272,172
Daily increase	45,741	44,871

QLD	Jurisdictions	Commonwealth
Cumulative	1,692,466	2,536,450
Daily increase	30,878	20,290

WA	Jurisdictions	Commonwealth
Cumulative	1,041,115	1,114,565
Daily increase	12,451	10,328

TAS	Jurisdictions	Commonwealth
Cumulative	293,995	244,133
Daily increase	3,595	1,674

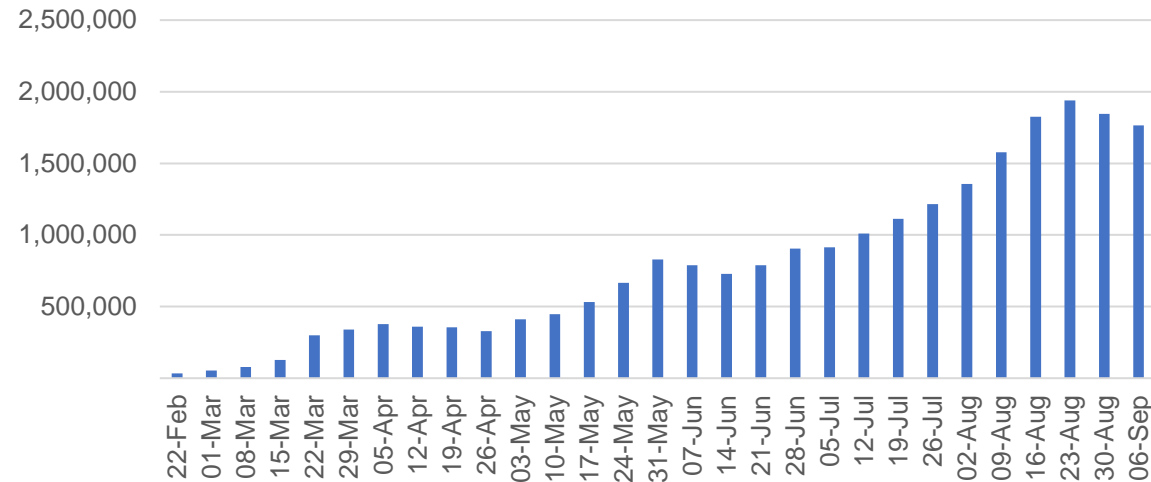
SA	Jurisdictions	Commonwealth
Cumulative	684,663	841,717
Daily increase	8,547	8,981

ACT	Jurisdictions	Commonwealth
Cumulative	275,062	306,661
Daily increase	4,452	3,501

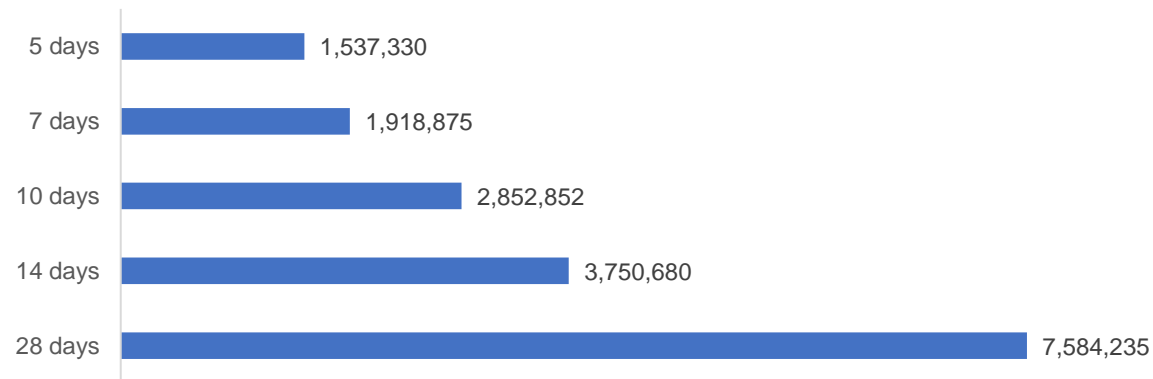
NT	Jurisdictions	Commonwealth
Cumulative	150,300	99,752
Daily increase	1,411	1,191

# Vaccine milestone charts

Jabs in arms by week



Doses reported

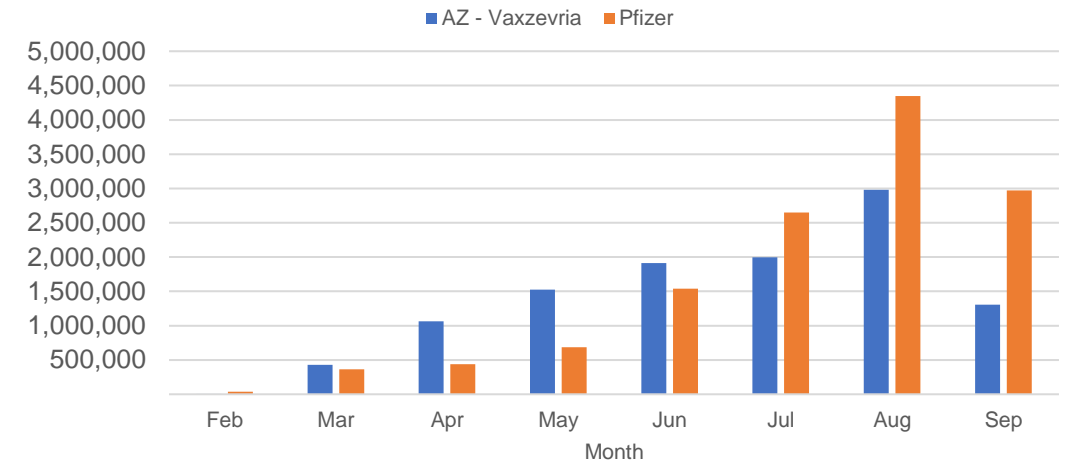


\*Sourced from the Australian Immunisation Register.

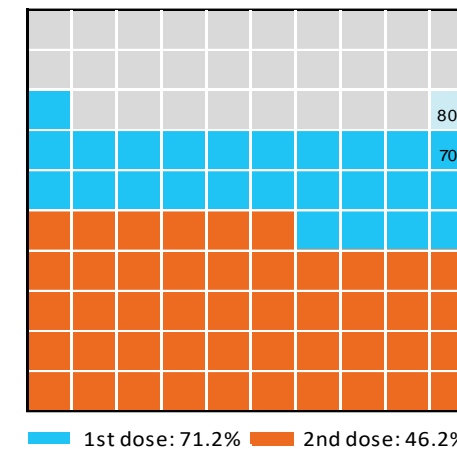
Data as at:  
17 Sept 2021

Australia's COVID-19  
Vaccine Roadmap

Doses by administration month and vaccine type



Eligible population percentage coverage



\*Each square represents 1% of the national population. Squares are filled as milestones are achieved.

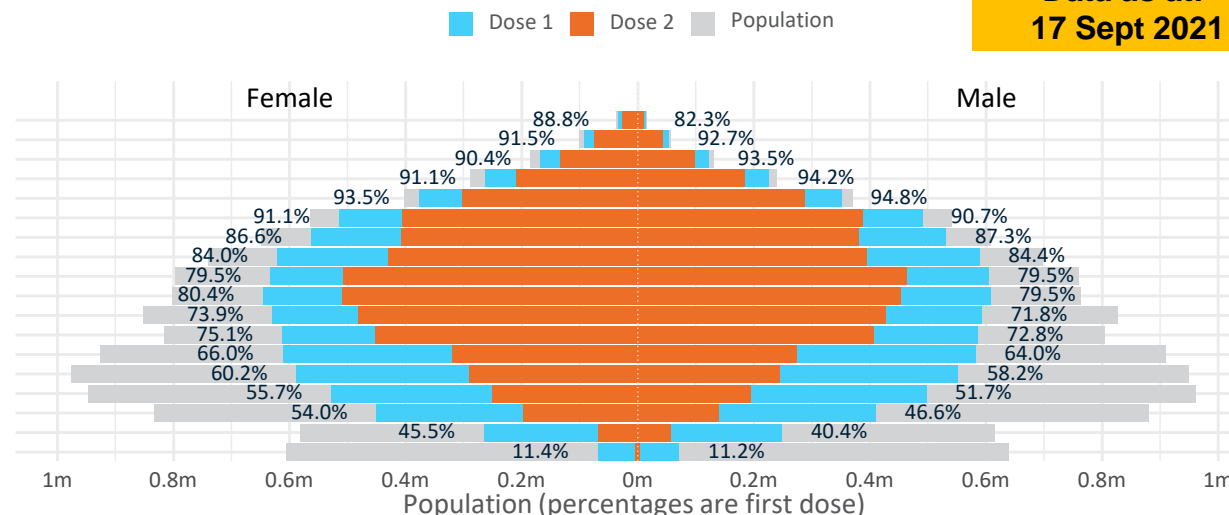
Data as at:  
17 Sept 2021

# Doses by age and sex

First and second doses by age and sex

	16+	50+	70+	12-15
Dose 1	<b>71.18%</b> (14,676,548 doses / 20,619,959 people)	<b>85.74%</b> (7,502,015 doses / 8,749,703 people)	<b>92.20%</b> (2,705,803 doses / 2,934,706 people)	<b>11.27%</b> (140,225 doses / 1,243,990 people)
Dose 2	<b>46.18%</b> (9,521,483 doses / 20,619,959 people)	<b>65.27%</b> (5,710,916 doses / 8,749,703 people)	<b>73.80%</b> (2,165,933 doses / 2,934,706 people)	<b>0.66%</b> (8,266 doses / 1,243,990 people)

Age	Dose 1	Dose 2
95+	46,045 (87.0%)	37,317 (70.5%)
90-94	145,786 (92.0%)	117,463 (74.1%)
85-89	290,176 (91.8%)	232,141 (73.4%)
80-84	489,267 (92.6%)	394,998 (74.7%)
75-79	729,069 (94.2%)	590,357 (76.3%)
70-74	1,005,460 (91.0%)	793,657 (71.8%)
65-69	1,094,924 (87.0%)	787,686 (62.6%)
60-64	1,211,037 (84.3%)	824,811 (57.4%)
55-59	1,237,483 (79.5%)	970,540 (62.4%)
50-54	1,252,768 (80.1%)	961,946 (61.5%)
45-49	1,222,643 (72.9%)	908,656 (54.2%)
40-44	1,200,142 (74.1%)	859,648 (53.1%)
35-39	1,196,455 (65.2%)	593,321 (32.3%)
30-34	1,145,185 (59.5%)	537,088 (27.9%)
25-29	1,032,397 (54.2%)	449,260 (23.6%)
20-24	864,363 (50.5%)	338,080 (19.7%)
16-19	513,348 (42.9%)	124,514 (10.4%)
12-15	140,225 (11.3%)	8,266 (0.7%)



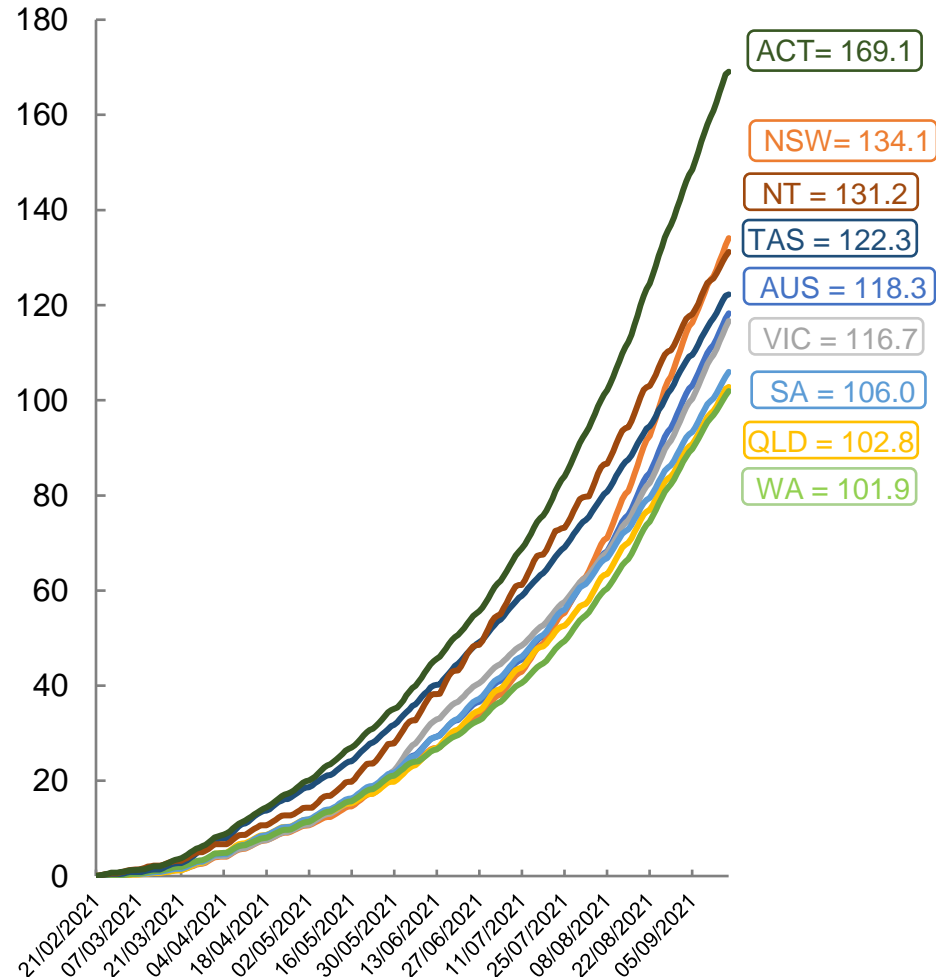
	AUS	ACT	NSW	NT	QLD	SA	TAS	VIC	WA
16 and over - dose 1	14,676,548	273,896	5,374,576	119,138	2,440,499	895,698	311,040	3,850,262	1,258,912
16 and over - dose 2	9,521,483	189,977	3,408,100	90,047	1,690,411	627,202	225,583	2,352,188	868,795
16 and over - population	20,619,959*	344,037	6,565,651	190,571	4,112,707	1,440,400	440,172	5,407,574	2,114,978
16 and over % with dose 1	71.18%	79.61%	81.86%	62.52%	59.34%	62.18%	70.66%	71.20%	59.52%
16 and over % with dose 2	46.18%	55.22%	51.91%	47.25%	41.10%	43.54%	51.25%	43.50%	41.08%
50 and over - dose 1	7,502,015	125,279	2,556,122	46,550	1,400,151	541,857	186,562	1,902,808	696,106
50 and over - dose 2	5,710,916	103,240	1,925,899	36,776	1,051,922	400,316	147,864	1,485,536	529,776
50 and over - population	8,749,703	127,802	2,807,793	62,280	1,758,855	674,384	220,036	2,211,211	885,370
50 and over % with dose 1	85.74%	>95%	91.04%	74.74%	79.61%	80.35%	84.79%	86.05%	78.62%
50 and over % with dose 2	65.27%	80.78%	68.59%	59.05%	59.81%	59.36%	67.20%	67.18%	59.84%
70 and over - dose 1	2,705,803	41,396	914,897	10,055	515,462	213,558	71,142	675,266	244,515
70 and over - dose 2	2,165,933	34,904	732,284	8,042	411,568	163,002	58,215	549,498	194,169
70 and over - population	2,934,706	39,946	962,606	12,343	577,767	240,514	77,155	743,519	280,281
70 and over % with dose 1	92.20%	>95%	95.04%	81.46%	89.22%	88.79%	92.21%	90.82%	87.24%
70 and over % with dose 2	73.80%	87.38%	76.07%	65.15%	71.23%	67.77%	75.45%	73.91%	69.28%
12 to 15 - dose 1	140,225	1,886	67,743	2,790	17,968	2,937	1,491	39,117	5,388
12 to 15 - dose 2	8,266	265	3,916	291	1,946	140	98	1,245	297
12 to 15 - population	1,243,990	19,693	390,330	13,060	270,146	82,747	26,308	308,611	132,869
12 to 15 % with dose 1	11.27%	9.58%	17.36%	21.36%	6.65%	3.55%	5.67%	12.68%	4.06%
12 to 15 % with dose 2	0.66%	1.35%	1.00%	2.23%	0.72%	0.17%	0.37%	0.40%	0.22%

\*National population will not equal sum of listed jurisdictions due to a small number of people counted in national population residing in some 'other' territories. Sum of state doses will not add to national total as some records are unable to be geocoded to a State or Territory.

Doses sourced from Australian Immunisation Register, population from ABS ERP June 2020

# Vaccinations by location

Cumulative total doses administered vs state populations\*

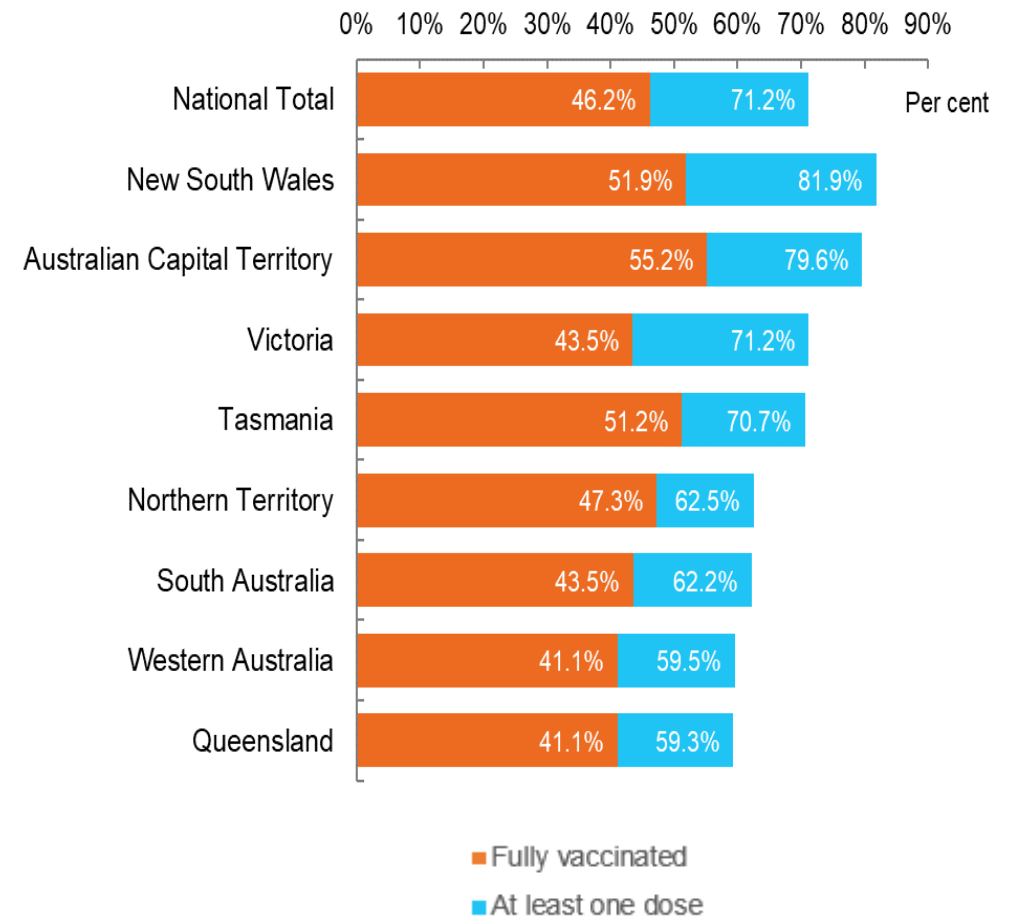


\*Not an indication of percentage vaccinated, numbers will exceed 100 due to multiple doses required per person of the population

Data as at:  
17 Sept 2021

Australia's COVID-19  
Vaccine Roadmap

First and Second Doses by state of residence





# Aboriginal and Torres Strait Islander peoples

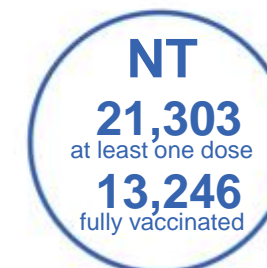
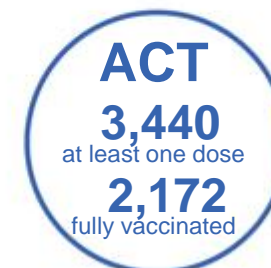
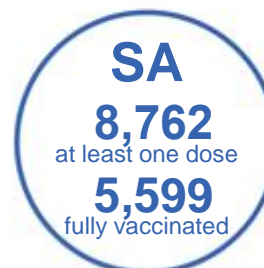
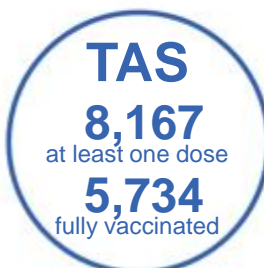
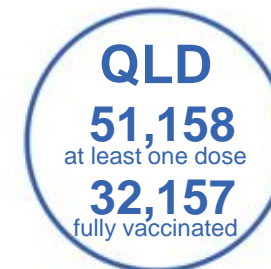
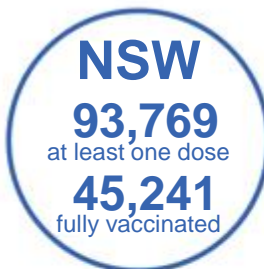
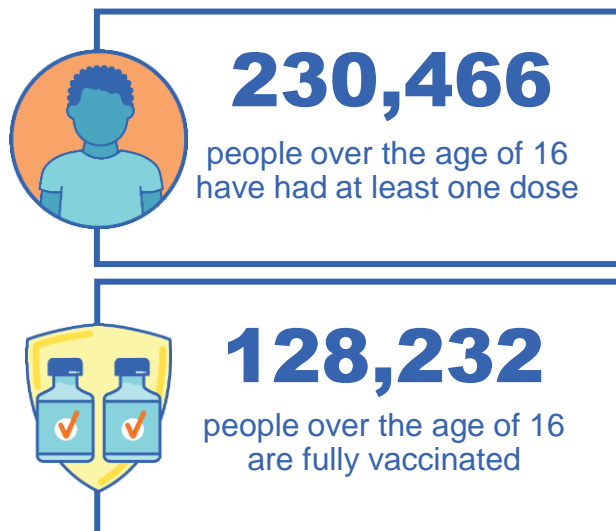
## Number of people vaccinated

Data as at:  
12 Sept 2021  
Updated weekly

Australia's COVID-19  
Vaccine Roadmap

### 166 Aboriginal community controlled health services (ACCHS)

0#	48	26	39	11	3	21	18
ACT	NSW	NT	QLD	SA	TAS	VIC	WA



**6,321** people with at least one dose  
**3,052** people fully vaccinated

residing in other territories or with missing residential information

Source: Australian Immunisation Register

\*Identifying as Aboriginal and Torres Strait Islander is optional and the estimated population may be under reported.

\*\*Includes all Aboriginal and Torres Strait Islander peoples who have received a vaccination, not limited to those administered in an ACCHS setting

\*\*\*Updated weekly.

\*\*\*\*. Data corrections identified for Victoria have resulted in adjustments to the number of persons identifying as Aboriginal and Torres Strait Island

#ACCHS in the ACT are currently operating as a Commonwealth Vaccine Clinics so not included to avoid double counting



Data as at:  
17 Sep 2021

# Commonwealth primary care



## Primary care vaccine administration sites

<b>5,418</b>	<b>137</b>	<b>165</b>	<b>3,146</b>
GPs	CVCs	ACCHS	Pharmacies



**13,140,251** total vaccine doses administered primary care settings as at 17 September  
**+ 183,490** recorded in the last 24 hours

## Primary care vaccinations by provider type

	Doses administered	Daily increase	7 day increase
General Practice* includes other Commonwealth	12,572,403	166,492	912,799
Pharmacy	567,848	16,998	88,156



**70,125** doses administered to persons residing in other territories or with missing residential information

\*General practice includes Commonwealth Vaccination Clinics, Aboriginal Community Health Centres, Royal Flying Doctor Service and other Commonwealth vaccination facilities

Source: Australian Immunisation Register

Data as at:  
17 Sept 2021

# Commonwealth aged care and disability doses administered



**906,826**

(+ 2,202 last 24 hours)

Total vaccine doses administered in aged care and disability facilities as at 17 September

Number of doses administered as part of the Commonwealth aged and disability care rollout

**NSW**  
**419,828**  
(+4,448 daily increase)

**VIC**  
**170,908**  
(+314 daily increase)

**QLD**  
**145,285**  
(-3,397\*\*\* daily increase)

**WA**  
**60,748**  
(+314 daily increase)

**TAS**  
**16,304**  
(+64 daily increase)

**SA**  
**54,853**  
(+409 daily increase)

**ACT**  
**10,888**  
(+290 daily increase)

**NT**  
**5,417**  
(-16\*\*\* daily increase)

\*Sourced from the Australian Immunisation Register. Includes all persons vaccinated at participating residential aged care, disability and related industry settings.

\*\*State level breakdown indicates the residential location and may not align to the state in which the vaccination occurred.

\*\*\* Please note fluctuation of figures can be attributed to the historical reconciliation of data within the Australian Immunisation Register.

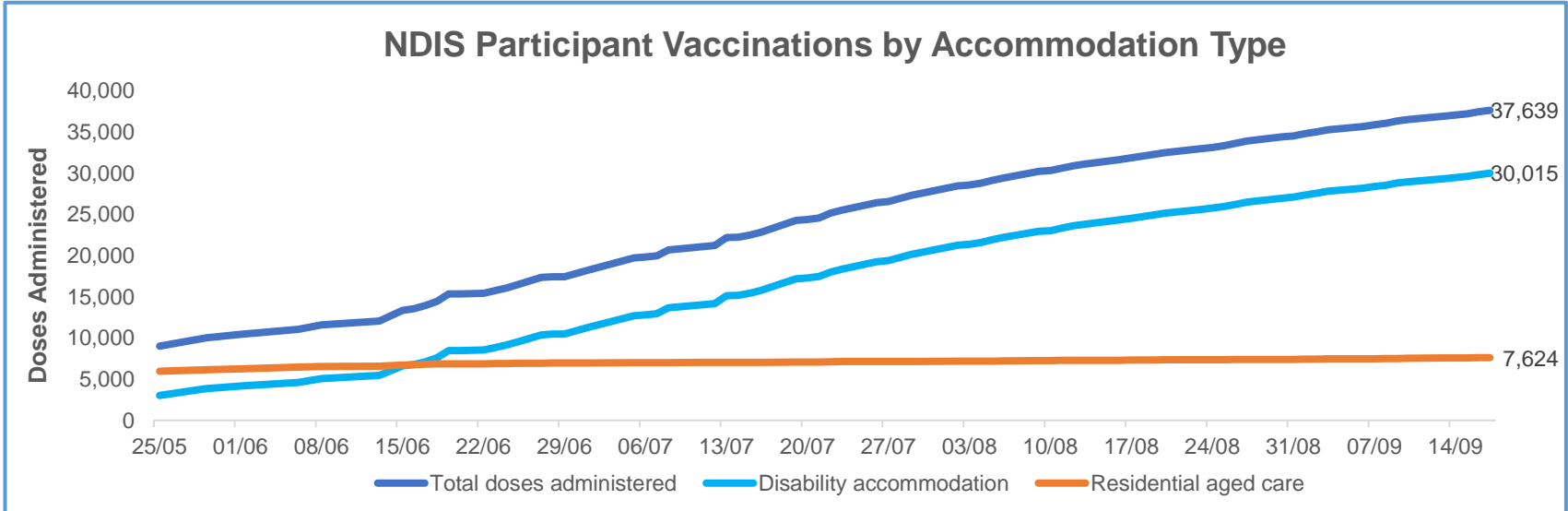
**22,595**

doses administered to persons residing in other territories or with missing residential information

Data as at:  
17 Sept 2021\*

# Vaccination rate of people with disability and the disability workforce

## Phase 1a – People with disability living in shared accommodation



	Total people with at least one dose	People fully vaccinated	Total number of individuals in cohort	Total doses administered	% People with at least one dose	% People fully vaccinated
NDIS participants living in shared accommodation **	20,128	17,511	27,293	37,639	73.7%	64.2%
NDIS screened workers ***	133,021	101,264	189,644	234,285	70.1%	53.4%

\* Updates are available Monday to Friday on participants, and bi-weekly for workers, numbers may be up to four days old.

\*\* Shared accommodation means two or more people with disability living in shared residential accommodation and NDIS participants living in Residential Aged Care accommodation as per the eligibility criteria of Phase 1a.

\*\*\* Total number of workers within the NDIS Commission Worker Screening database who have ever been successfully screened and linked to an NDIS registered provider or participant.

Source: Linkage between National Disability Insurance Agency data, NDIS Quality and Safeguards Commission data and the Australian Immunisation Register.

## Residential aged care vaccination rollout

### Residential aged care facilities status

**100%** Commonwealth facilities visited (2,569 planned sites)

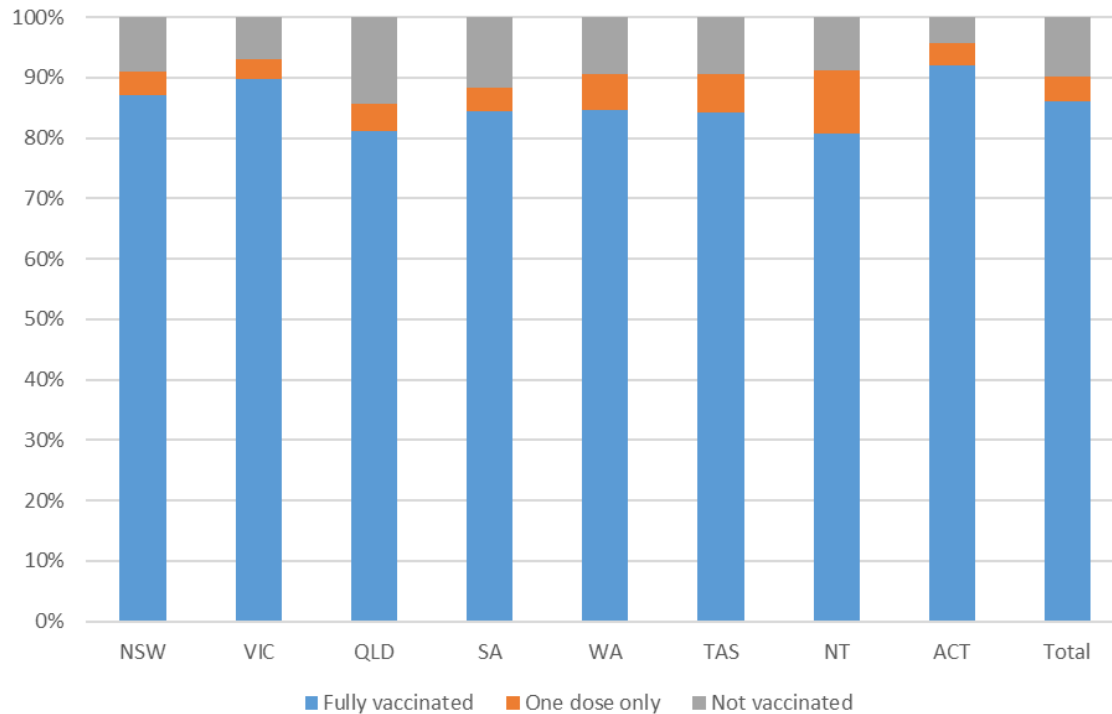
**160,235** People fully vaccinated

**90.1%** Participation rate

Australia's COVID-19 Vaccine Roadmap

Data as at:  
17 Sept 2021\*

### Aged care resident vaccinations



### Aged care worker vaccinations

Jurisdictions	Total workers with at least one dose	Workers fully vaccinated	% Workers with at least one dose	% Workers fully vaccinated
NSW	78,386	65,504	98.3%	82.2%
VIC	69,865	57,981	97.8%	81.2%
QLD	46,986	36,301	97.8%	75.6%
SA	25,956	21,150	97.8%	79.7%
WA	23,072	16,481	98.9%	70.6%
TAS	7,381	6,101	99.1%	81.9%
NT	797	761	99.3%	94.8%
ACT	2,919	2,468	99.0%	83.7%
<b>Total</b>	<b>255,362</b>	<b>206,747</b>	<b>98.1%</b>	<b>79.4%</b>

Source: My Aged Care Portal staff vaccination progress

\*\*Resident vaccination information is reported manually by service providers

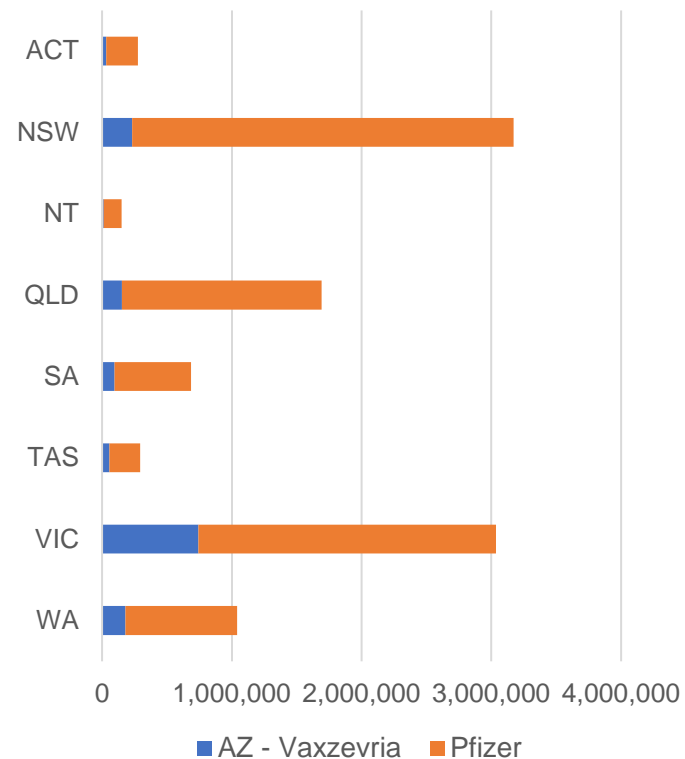
\*Status updates are provided by facilities at least once per week. Reporting is updated Monday to Friday to encompass different facility updates being made on different days.

Data is sourced directly from Aged Care Service Providers and is not drawn or closely aligned with data from AIR due to inconsistencies and potential lags in uploading of records.

Data as at:  
17 Sept 2021

# Jurisdiction administered

Total vaccine doses administered in State and Territory clinics as at 17 September



**10,345,361** total vaccine doses administered  
in State and Territory clinics as at 17 September  
+ **152,683** recorded in the last 24 hours  
+ **815,496** recorded in the last 7 days

**NSW**  
**3,171,656**  
(+45,608 daily increase)

**VIC**  
**3,036,104**  
(+45,741 daily increase)

**QLD**  
**1,692,466**  
(+30,878 daily increase)

**WA**  
**1,041,115**  
(+12,451 daily increase)

**TAS**  
**293,995**  
(+3,595 daily increase)

**SA**  
**684,663**  
(+8,547 daily increase)

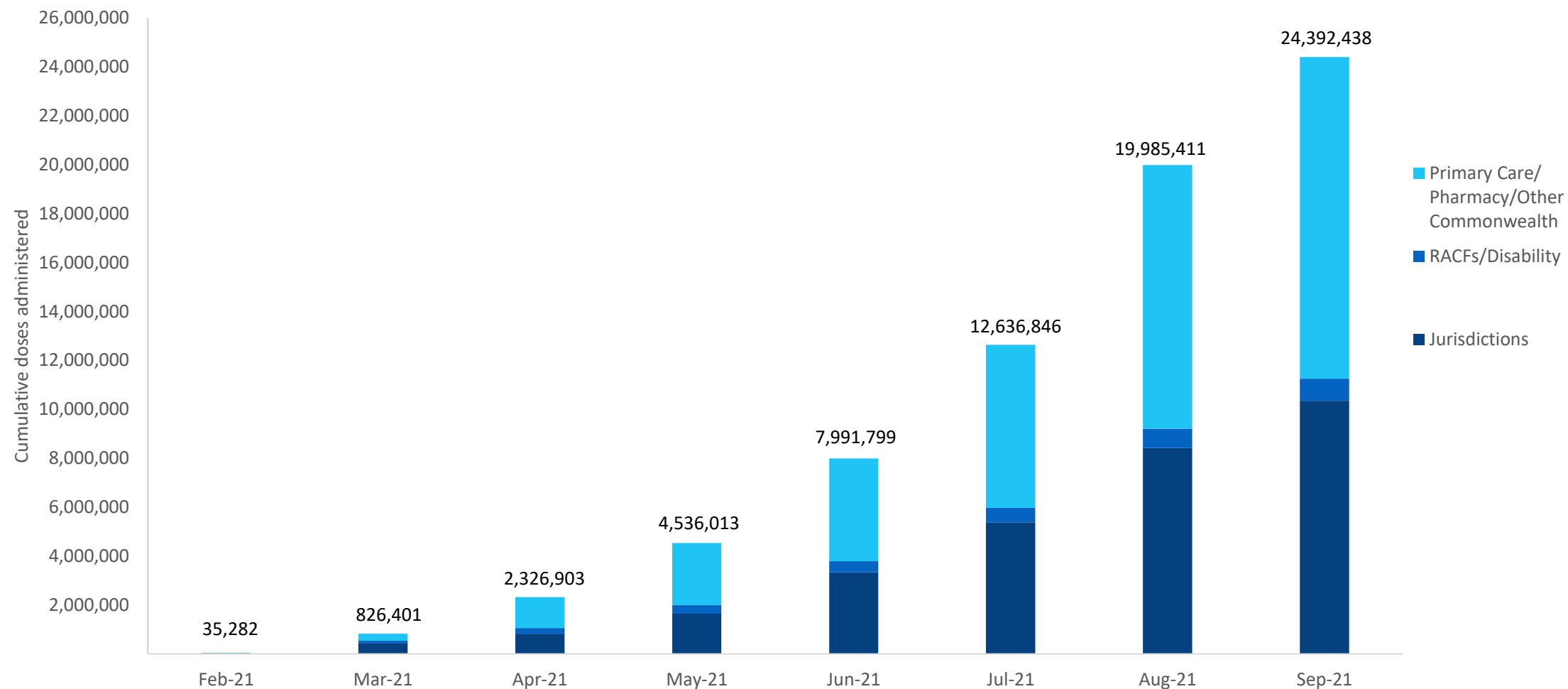
**ACT**  
**275,062**  
(+4,452 daily increase)

**NT**  
**150,300**  
(+1,411 daily increase)

\*Sourced from the Australian Immunisation Register and self-reported data. Numbers are calculated as difference in daily cumulative reported numbers to allow for historical corrections in all self-reported data sources.

# Cumulative doses administered by channel

Data as at:  
17 Sept 2021



Source: Australian Immunisation Register

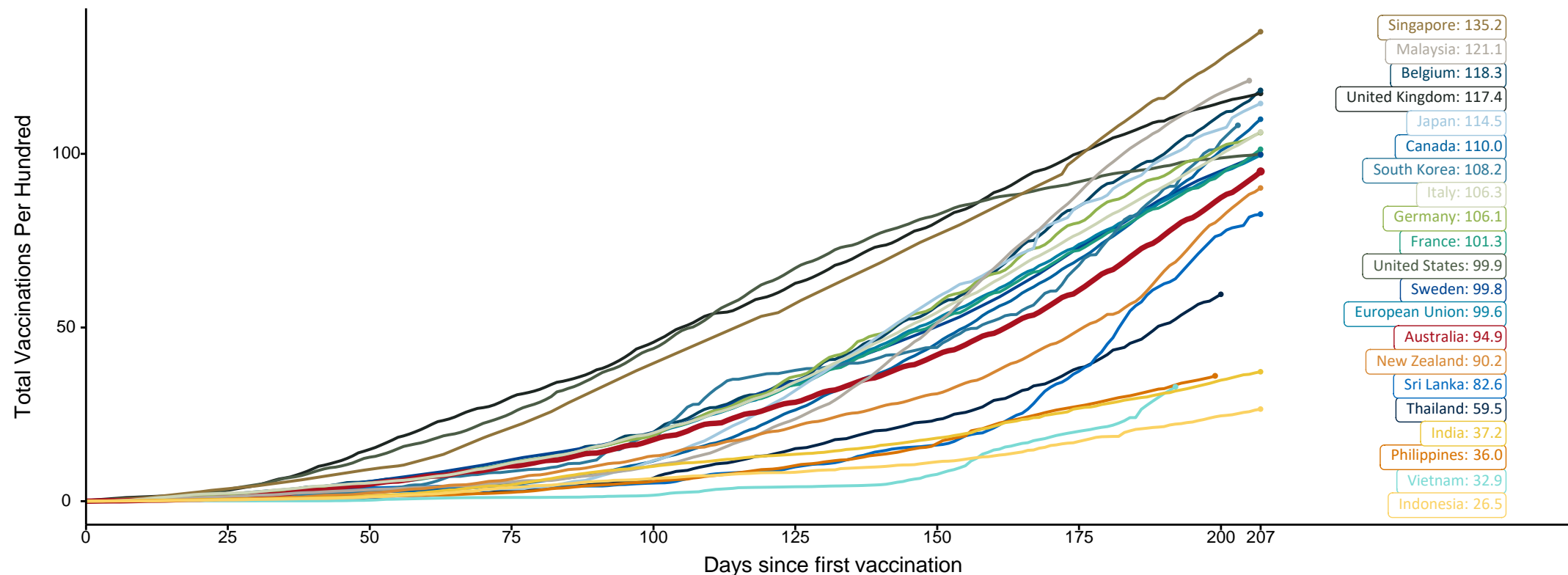


# Doses at equivalent stages of rollout (Day 207)

Data as at:  
17 Sept 2021

The x-axis is truncated at the length of Australia's vaccination program. Countries with intermittent reporting have had their doses per 100 imputed to Australia's current stage of rollout. Israel excluded as it is beyond scale of the graph

Cumulative doses administered (17 Sep): **24,392,438**



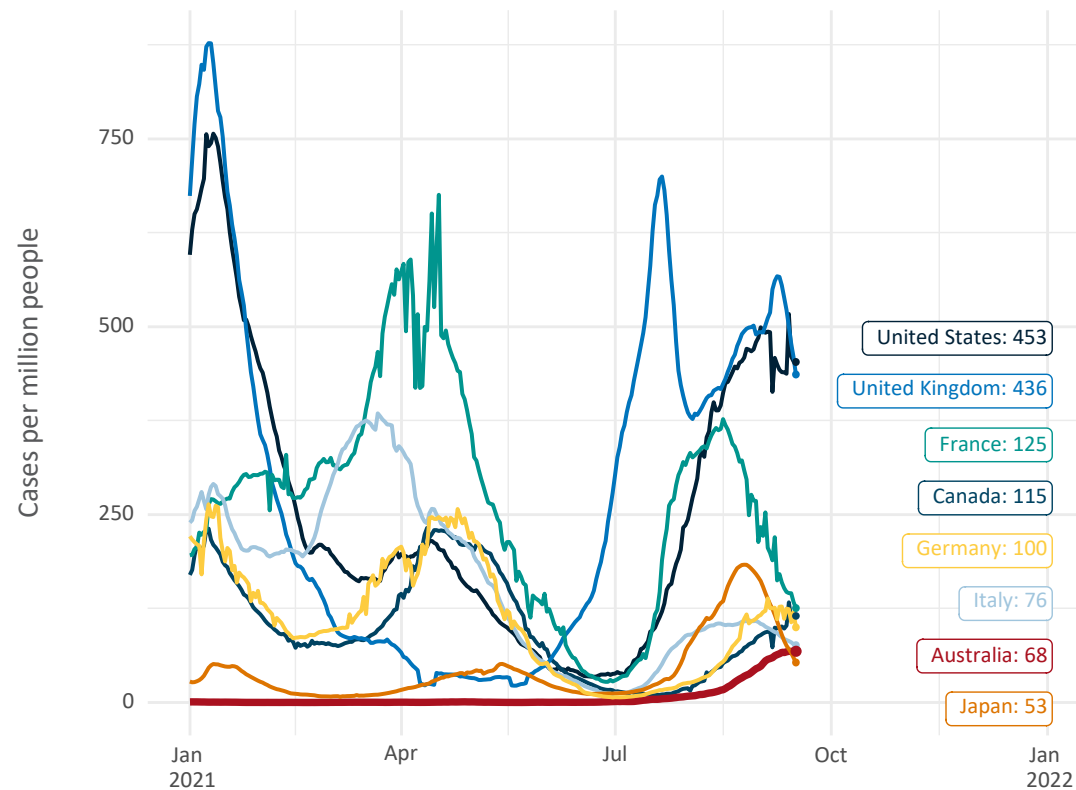
Note: From 15 September 2021, data for Australia includes all doses administered to people 12 and over. Prior to 15 September, data was for 16 and over  
Source: Department of Health (Australia), Our World in Data (international)  
Latest data: 17 September



# International data – COVID-19

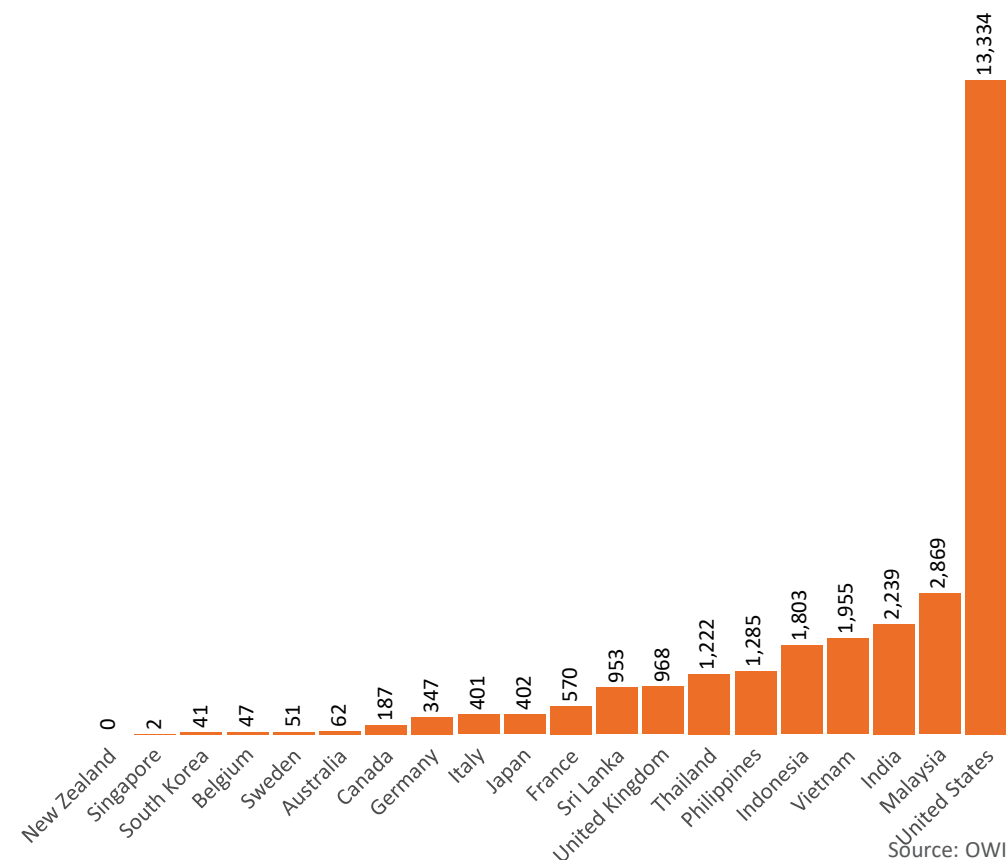
Data as at:  
17 Sept 2021

New daily cases per million in 2021, Australia and G7 countries  
Smoothed - 7 day average



Source: OWID  
Data downloaded: 18 Sep 2021 09:47  
Latest data: 16 Sep 2021

COVID-19 deaths in past 7 days - Australia and select countries



Source: OWID  
Data downloaded: 18 Sep 2021 09:48  
Latest data: 16 Sep 2021

# Pandemic Response Payments

Australia's COVID-19  
Vaccine Roadmap

Data as at midnight:  
17 Sep 2021



**2.07 million**

People have received at least one COVID  
Disaster Payment (including ISP200)

**\$7.68 billion**

Paid Out as at 17 Sep 2021

**3.49 million**

Claims granted across  
three different payments



**93%**

of Claims  
Received Digitally



**COVID Disaster Payment:**

3.43 million claims received - 1.91 million individuals paid a total of \$7.45 billion.

**\$200 Income Support Payment:**

206,000 claims received - 158,000 individuals paid a total of \$144.83 million.

**Pandemic Leave Disaster Payment:**

63,000 claims received - 55,000 individuals paid a total of \$86.87 million.



**THREE  
PAYMENTS  
AVAILABLE**

## COVID Disaster Payment

assisting during a lockdown  
event in a Commonwealth  
hotspot.

## Income Support Payment \$200

for income support  
recipients who lost at  
least 8 hours of work.

## Pandemic Leave Disaster Payment

for those who have  
to self-isolate,  
quarantine or care.

For more information visit:  
[servicesaustralia.gov.au](https://servicesaustralia.gov.au)

## COVID-19 DISASTER PAYMENTS

### New South Wales

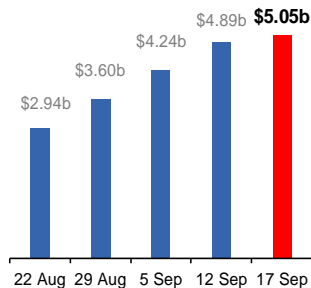
Active lockdown since 24 Jun

**1.03m people have  
received at least one  
COVID Disaster Payment.**

**\$5.05b paid out as at  
17 Sep 2021.**

**\$647m paid in initial and  
reoccurring payments in the  
week ending 12 Sep 2021.**

Cumulative payments made by State since  
activation on 1 Jul 2021.



### Victoria

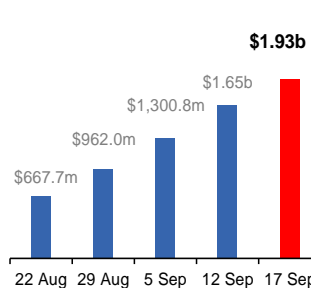
Active lockdown (#6) since 6 Aug

**527,000 people have  
received at least one  
COVID Disaster Payment.**

**\$1.93b paid out as at  
17 Sep 2021.**

**\$346m paid in initial and  
reoccurring payments in the  
week ending 12 Sep 2021.**

Cumulative payments made by State since  
activation on 8 Jun 2021.



### Australian Capital Territory

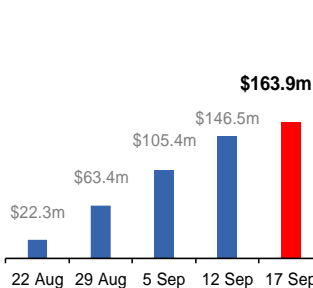
Active lockdown since 12 Aug

**61,000 people have  
received at least one  
COVID Disaster Payment.**

**\$163.9m paid out as at  
17 Sep 2021.**

**\$41m paid in initial and  
reoccurring payments in the  
week ending 12 Sep 2021.**

Cumulative payments made by State since  
activation on 20 Aug 2021.



### Northern Territory

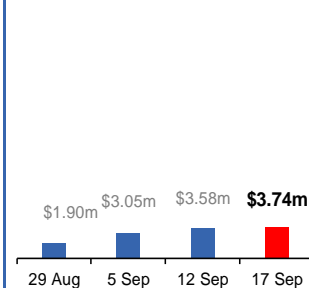
Lockdown from 18 – 20 Jul  
Claiming period ends 13 Sep

**5,766 people have  
received at least one  
COVID Disaster Payment.**

**\$3.74m paid out as at  
17 Sep 2021.**

**\$533,000 paid in initial  
payments in the week  
ending 12 Sep 2021.**

Cumulative payments made by State since  
activation on 25 Aug 2021.



### Queensland

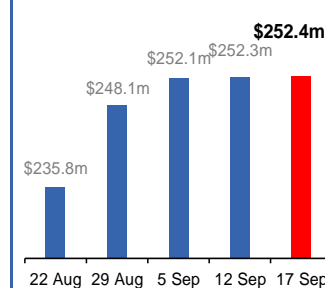
Lockdown from 31 Jul – 11 Aug  
Claiming period ended 28 Aug

**196,000 people have  
received at least one  
COVID Disaster Payment.**

**\$252.4m paid out as at  
17 Sep 2021.**

**\$194,000 paid in initial  
and reoccurring payments in the  
week ending 12 Sep 2021.**

Cumulative payments made by State since  
activation on 7 Aug 2021.



### South Australia

Lockdown from 21 – 27 Jul  
Claiming period ended 17 Aug

**86,000 people have  
received at least one  
COVID Disaster Payment.**

**\$48.2m paid out as at  
17 Sep 2021.**

**\$18,000 paid in initial  
payments in the week  
ending 12 Sep 2021.**

Cumulative payments made by State since  
activation on 28 Jul 2021.

