



**Australian Government**  
**Operation COVID Shield**

# COVID-19 Vaccine Roll-out

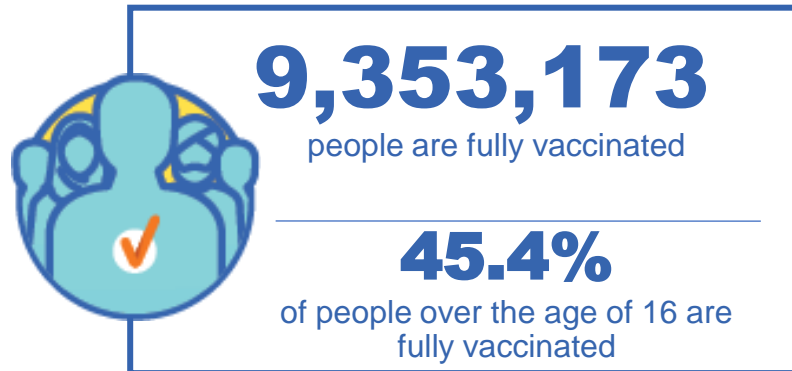
17 September 2021

Data as at:  
16 September 2021

## Total vaccine doses



**24,054,063** total vaccine  
doses administered nationally as at 16 September  
**+302,141** recorded in the last 24 hours



\*Administration state breakdown indicates state in which a vaccine was administered

\*\*Overall dose count includes instances of more than two doses per person in a small number of cases.

Source: Australian Immunisation Register

Data as at:  
16 September 2021

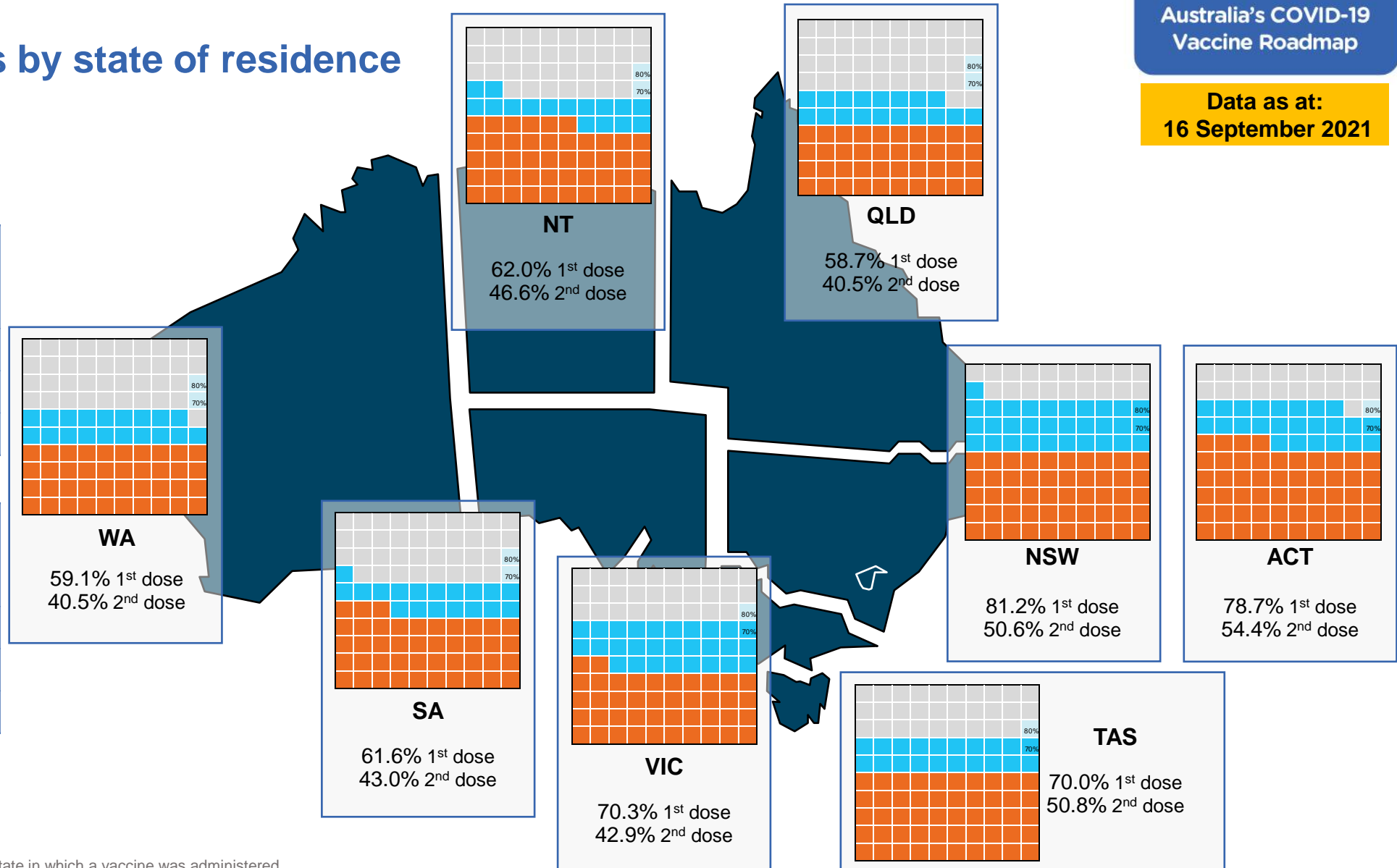
## Vaccinations by state of residence

### First doses

Age	Today	4 weeks ago	8 weeks ago
16+	70.5%	51.8%	37.8%
50+	85.4%	75.0%	62.8%
70+	91.9%	85.6%	78.3%

### Fully vaccinated

Age	Today	4 weeks ago	8 weeks ago
16+	45.4%	29.6%	16.0%
50+	64.6%	43.3%	21.7%
70+	73.2%	57.0%	36.4%



\*Residential state may differ from the state in which a vaccine was administered

## Commonwealth and Jurisdiction vaccine doses administered

Data as at:  
16 September 2021



**10,192,678**

doses administered by state  
and territory facilities

**+ 120,054**

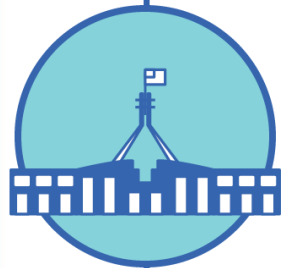
recorded in the last 24 hours



**24,054,063** total vaccine

doses administered nationally as at 16 September

**+ 302,141** recorded in the last 24 hours



**13,861,385**

doses administered by  
commonwealth facilities

**+ 182,087**

recorded in the last 24 hours

**12,956,761** total vaccine doses  
administered in primary care settings

**904,624** total vaccine doses  
administered in aged care and disability  
settings

NSW	Jurisdictions	Commonwealth
Cumulative	3,126,048	5,536,771
Daily increase	22,984	84,274

VIC	Jurisdictions	Commonwealth
Cumulative	2,990,363	3,227,301
Daily increase	42,674	44,329

QLD	Jurisdictions	Commonwealth
Cumulative	1,661,588	2,516,160
Daily increase	23,076	28,969

WA	Jurisdictions	Commonwealth
Cumulative	1,028,664	1,104,237
Daily increase	12,343	11,433

TAS	Jurisdictions	Commonwealth
Cumulative	290,400	242,459
Daily increase	4,024	1,910

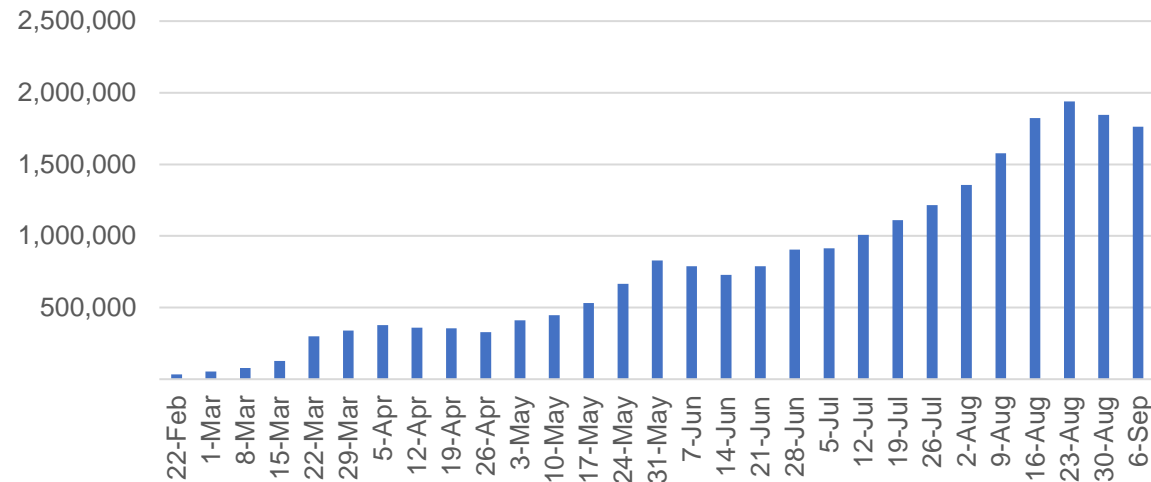
SA	Jurisdictions	Commonwealth
Cumulative	676,116	832,736
Daily increase	8,931	7,767

ACT	Jurisdictions	Commonwealth
Cumulative	270,610	303,160
Daily increase	4,478	2,614

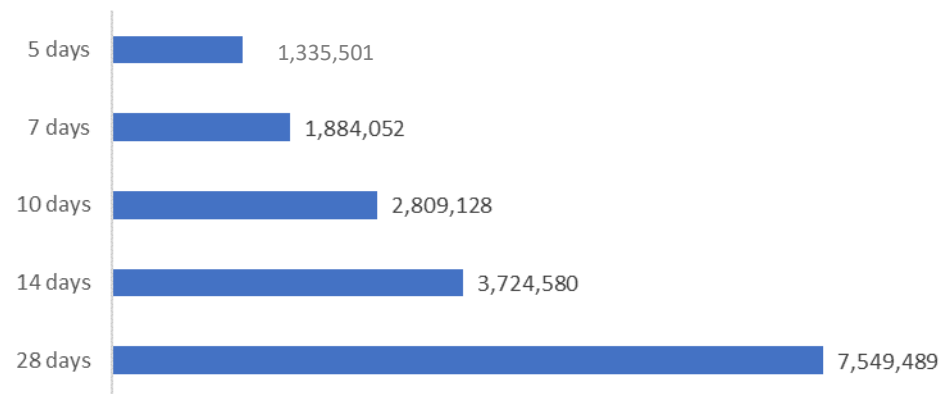
NT	Jurisdictions	Commonwealth
Cumulative	148,889	98,561
Daily increase	1,544	791

# Vaccine milestone charts

Jabs in arms by week



Doses reported

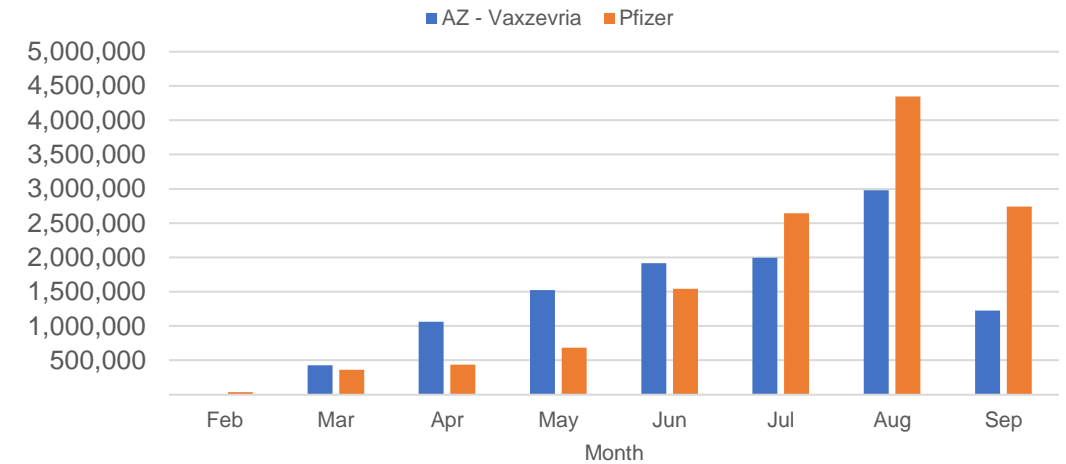


\*Sourced from the Australian Immunisation Register.

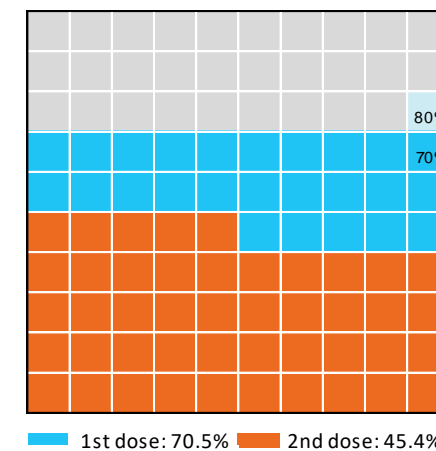
Data as at:  
16 September 2021

Australia's COVID-19  
Vaccine Roadmap

Doses by administration month and vaccine type



Eligible population percentage coverage



\*Each square represents 1% of the national population.  
Squares are filled as milestones are achieved.

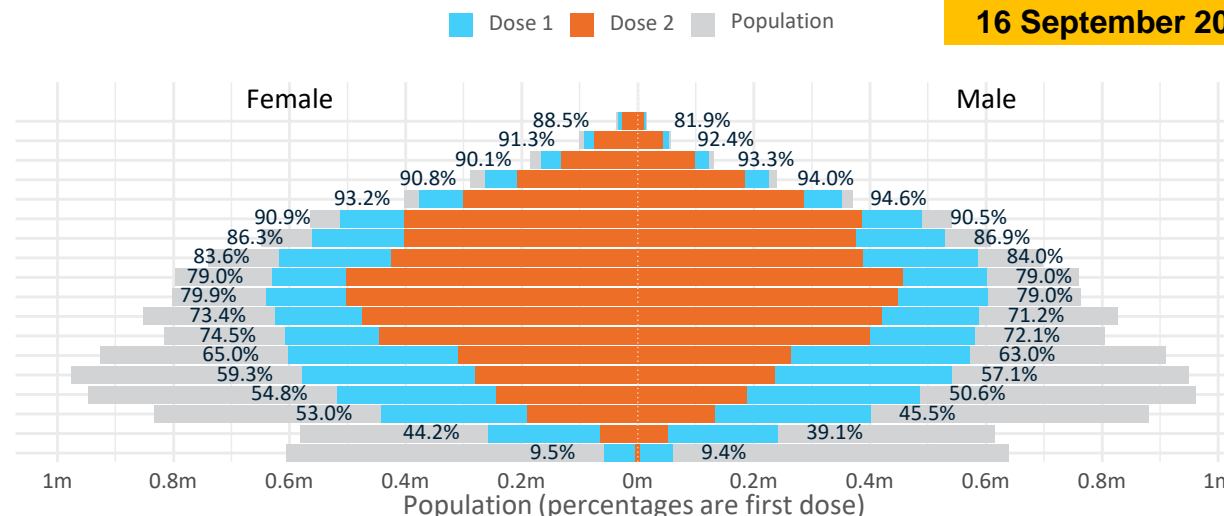
# Doses by age and sex

First and second doses by age and sex

Australia's COVID-19  
Vaccine Roadmap

Data as at:  
16 September 2021

Age	Dose 1	Dose 2
95+	45,905 (86.8%)	37,079 (70.1%)
90-94	145,405 (91.8%)	116,673 (73.6%)
85-89	289,376 (91.5%)	230,333 (72.8%)
80-84	487,918 (92.3%)	391,963 (74.2%)
75-79	726,943 (94.0%)	585,745 (75.7%)
70-74	1,002,668 (90.7%)	787,220 (71.2%)
65-69	1,090,506 (86.7%)	778,227 (61.9%)
60-64	1,205,215 (83.9%)	812,885 (56.6%)
55-59	1,230,722 (79.1%)	959,460 (61.7%)
50-54	1,244,168 (79.5%)	948,995 (60.7%)
45-49	1,213,280 (72.4%)	895,121 (53.4%)
40-44	1,189,413 (73.4%)	844,648 (52.1%)
35-39	1,177,604 (64.2%)	572,947 (31.2%)
30-34	1,125,374 (58.5%)	517,724 (26.9%)
25-29	1,012,799 (53.1%)	432,979 (22.7%)
20-24	846,575 (49.4%)	325,033 (19.0%)
16-19	497,470 (41.6%)	116,141 (9.7%)
12-15	117,347 (9.4%)	7,212 (0.6%)



	AUS	ACT	NSW	NT	QLD	SA	TAS	VIC	WA
16 and over - dose 1	14,531,341	270,604	5,332,793	118,065	2,416,197	887,003	307,968	3,799,061	1,249,568
16 and over - dose 2	9,353,173	187,269	3,320,667	88,872	1,667,327	618,897	223,502	2,322,263	856,551
16 and over - population	20,619,959*	344,037	6,565,651	190,571	4,112,707	1,440,400	440,172	5,407,574	2,114,978
16 and over % with dose 1	70.47%	78.66%	81.22%	61.95%	58.75%	61.58%	69.97%	70.25%	59.08%
16 and over % with dose 2	45.36%	54.43%	50.58%	46.63%	40.54%	42.97%	50.78%	42.94%	40.50%
50 and over - dose 1	7,468,826	124,947	2,545,527	46,307	1,394,045	539,039	185,834	1,893,904	692,857
50 and over - dose 2	5,648,580	102,318	1,898,429	36,344	1,042,284	396,052	146,955	1,471,694	525,218
50 and over - population	8,749,703	127,802	2,807,793	62,280	1,758,855	674,384	220,036	2,211,211	885,370
50 and over % with dose 1	85.36%	>95%	90.66%	74.35%	79.26%	79.93%	84.46%	85.65%	78.26%
50 and over % with dose 2	64.56%	80.06%	67.61%	58.36%	59.26%	58.73%	66.79%	66.56%	59.32%
70 and over - dose 1	2,698,215	41,323	912,426	10,024	514,277	212,883	70,978	673,051	243,764
70 and over - dose 2	2,149,013	34,686	725,110	7,970	408,978	161,645	57,938	545,364	193,128
70 and over - population	2,934,706	39,946	962,606	12,343	577,767	240,514	77,155	743,519	280,281
70 and over % with dose 1	91.94%	>95%	94.79%	81.21%	89.01%	88.51%	91.99%	90.52%	86.97%
70 and over % with dose 2	73.23%	86.83%	75.33%	64.57%	70.79%	67.21%	75.09%	73.35%	68.91%
12 to 15 - dose 1	117,347	1,501	56,381	2,682	15,387	2,463	1,384	32,239	4,507
12 to 15 - dose 2	7,212	233	3,269	241	1,791	131	95	1,122	268
12 to 15 - population	1,243,990	19,693	390,330	13,060	270,146	82,747	26,308	308,611	132,869
12 to 15 % with dose 1	9.43%	7.62%	14.44%	20.54%	5.70%	2.98%	5.26%	10.45%	3.39%
12 to 15 % with dose 2	0.58%	1.18%	0.84%	1.85%	0.66%	0.16%	0.36%	0.36%	0.20%

\*National population will not equal sum of listed jurisdictions due to a small number of people counted in national population residing in some 'other' territories. Sum of state doses will not add to national total as some records are unable to be geocoded to a State or Territory.

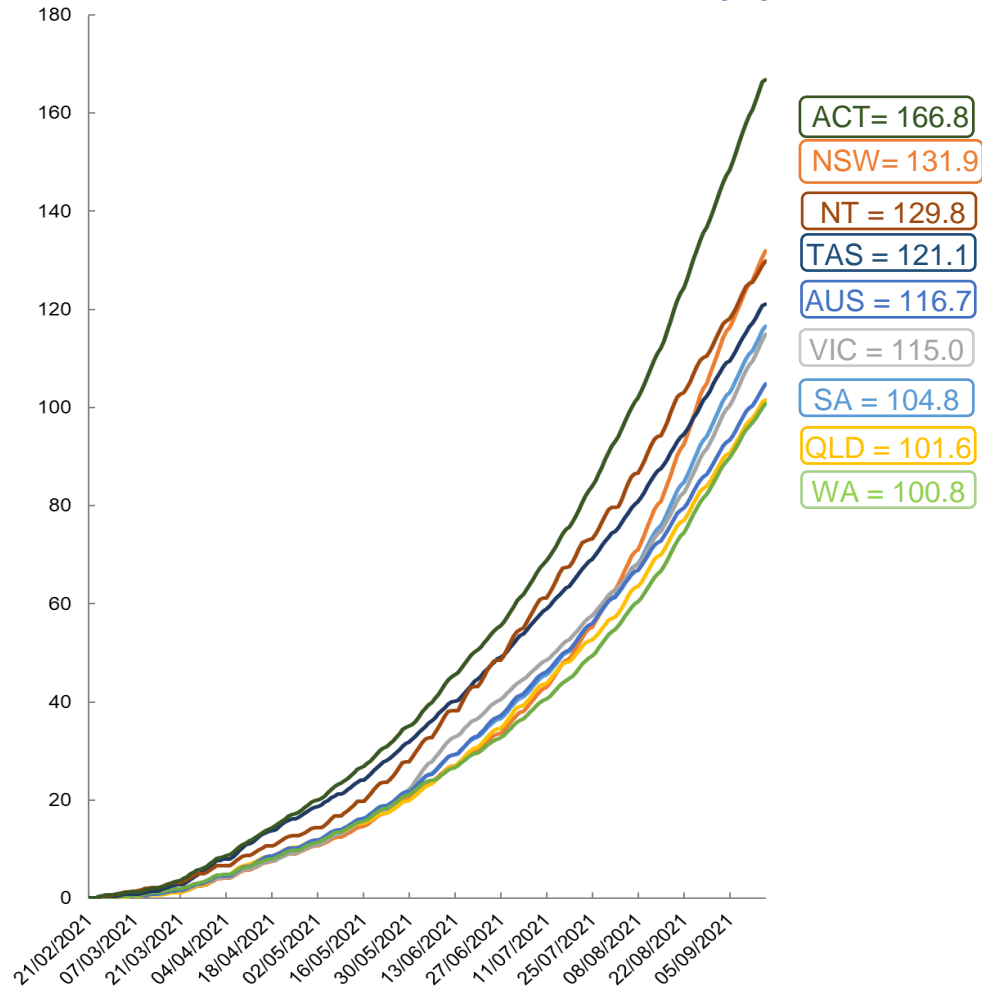
Doses sourced from Australian Immunisation Register, population from ABS ERP June 2020

# Vaccinations by location

Data as at:  
16 September 2021

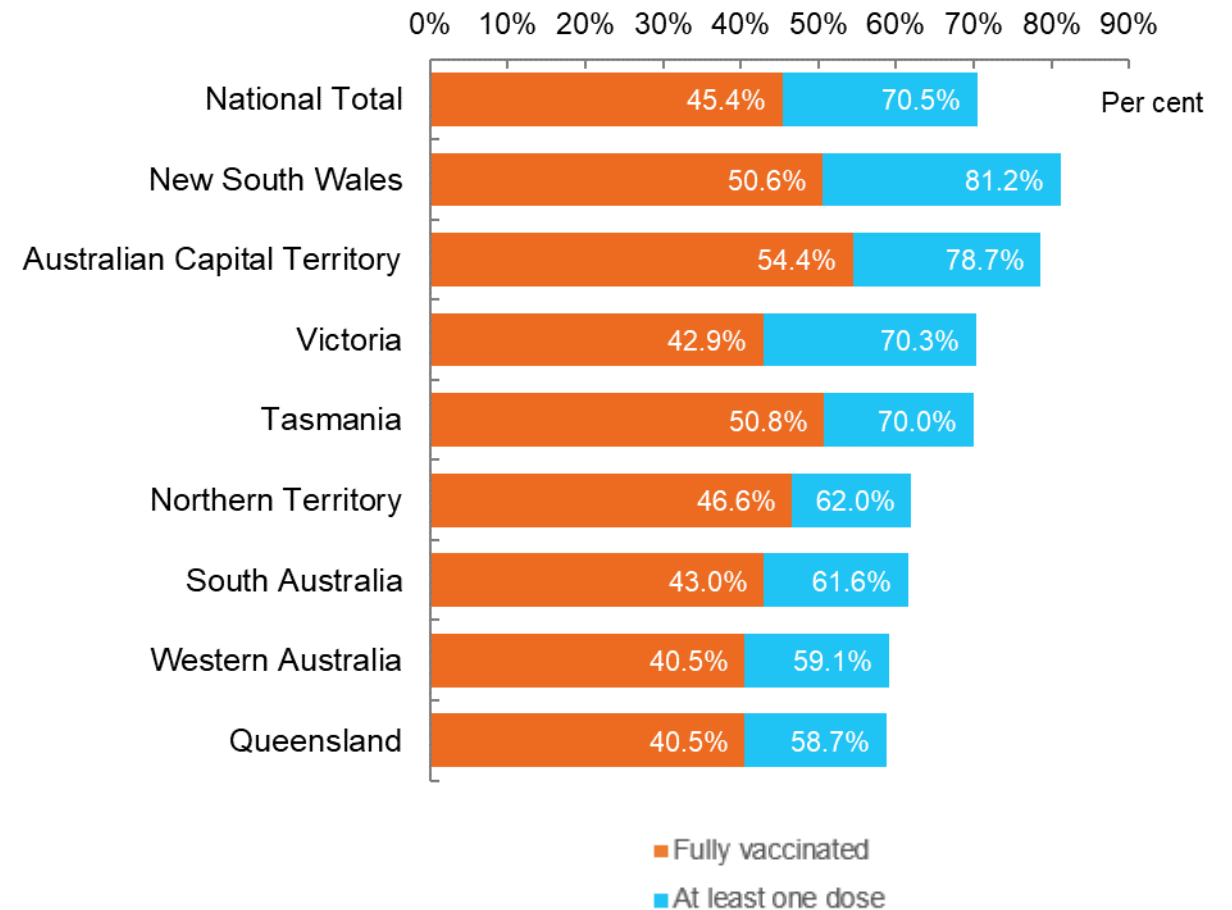
Australia's COVID-19  
Vaccine Roadmap

Cumulative total doses administered vs state populations\*



\*Not an indication of percentage vaccinated, numbers will exceed 100 due to multiple doses required per person of the population

First and Second Doses by state of residence



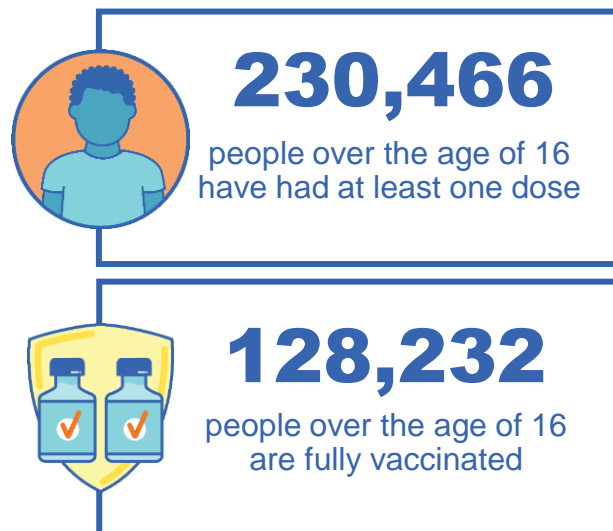


# Aboriginal and Torres Strait Islander peoples

## Number of people vaccinated

Data as at:  
12 September 2021  
Updated weekly

Australia's COVID-19  
Vaccine Roadmap



### 166 Aboriginal community controlled health services (ACCHS)

0#	48	26	39	11	3	21	18
ACT	NSW	NT	QLD	SA	TAS	VIC	WA



**6,321** people with at least one dose  
**3,052** people fully vaccinated

residing in other territories or with missing residential information  
Source: Australian Immunisation Register

\*Identifying as Aboriginal and Torres Strait Islander is optional and the estimated population may be under reported.

\*\*Includes all Aboriginal and Torres Strait Islander peoples who have received a vaccination, not limited to those administered in an ACCHS setting

\*\*\*Updated weekly.

\*\*\*\*. Data corrections identified for Victoria have resulted in adjustments to the number of persons identifying as Aboriginal and Torres Strait Island

#ACCHS in the ACT are currently operating as a Commonwealth Vaccine Clinics so not included to avoid double counting



Data as at:  
16 September 2021

## Commonwealth primary care



### Primary care vaccine administration sites

<b>5,421</b>	<b>137</b>	<b>165</b>	<b>3,146</b>
GPs	CVCs	ACCHS	Pharmacies



**12,956,761** total vaccine doses  
administered primary care settings as at 16 September  
**+ 171,532** recorded in the last 24 hours

### Primary care vaccinations by provider type

	Doses administered	Daily increase	7 day increase
<b>General Practice*</b> includes other Commonwealth	12,405,911	157,110	1,008,561
<b>Pharmacy</b>	550,850	14,422	91,157

**NSW**  
**5,139,870**  
(+80,722 daily increase)

**VIC**  
**3,056,140**  
(+41,535 daily increase)

**QLD**  
**2,332,645**  
(+24,432 daily increase)

**WA**  
**1,044,778**  
(+10,893 daily increase)

**TAS**  
**230,957**  
(+1,957 daily increase)

**SA**  
**781,242**  
(+7,607 daily increase)

**ACT**  
**219,073**  
(+2,345 daily increase)

**NT**  
**83,110**  
(+764 daily increase)

**68,946** doses administered to persons  
residing in other territories or with  
missing residential information

\*General practice includes Commonwealth Vaccination Clinics, Aboriginal Community Health Centres, Royal Flying Doctor Service and other Commonwealth vaccination facilities

Source: Australian Immunisation Register

Data as at:  
16 September 2021

# Commonwealth aged care and disability doses administered



**904,624**

(+ 10,555 last 24 hours)

Total vaccine doses administered in aged care and disability facilities as at 16 September

Number of doses administered as part of the Commonwealth aged and disability care rollout

**NSW**  
**415,380**  
(+4,263 daily increase)

**VIC**  
**170,594**  
(+1,394 daily increase)

**QLD**  
**148,682**  
(+3,921 daily increase)

**WA**  
**60,434**  
(+415 daily increase)

**TAS**  
**16,240**  
(+28 daily increase)

**SA**  
**54,444**  
(+285 daily increase)

**ACT**  
**10,598**  
(+47 daily increase)

**NT**  
**5,433**  
(+16 daily increase)

\*Sourced from the Australian Immunisation Register. Includes all persons vaccinated at participating residential aged care, disability and related industry settings.

\*\*State level breakdown indicates the residential location and may not align to the state in which the vaccination occurred.

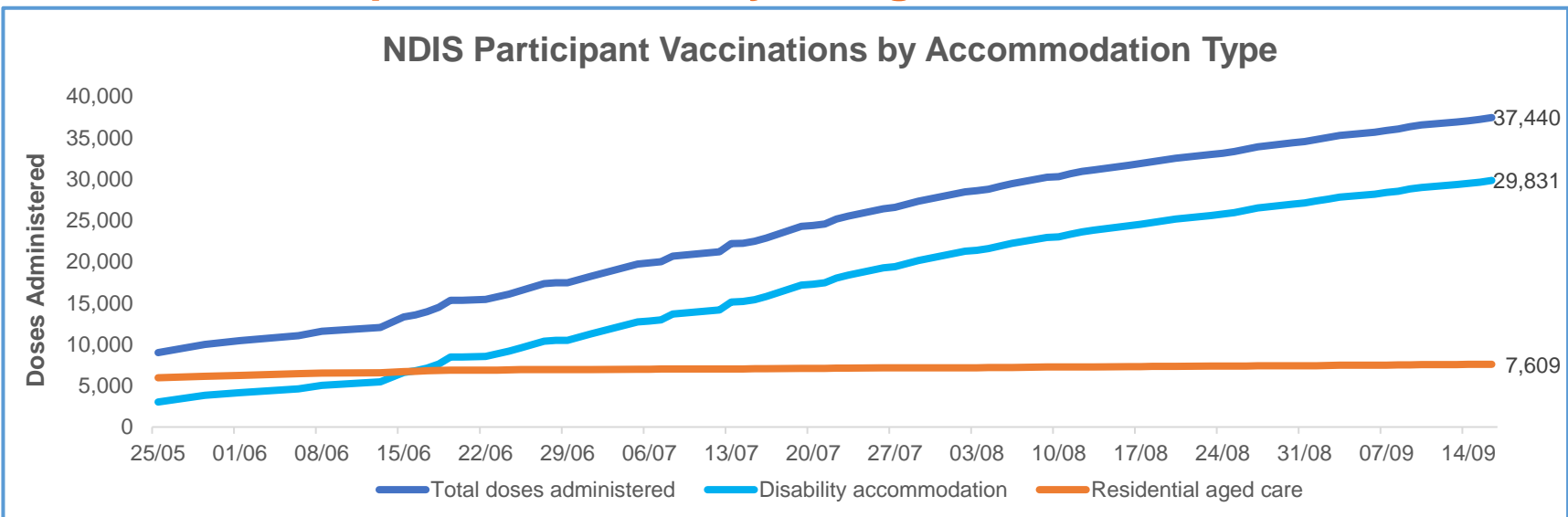
**22,819**

doses administered to persons residing in other territories or with missing residential information

Data as at:  
16 September 2021\*

# Vaccination rate of people with disability and the disability workforce

## Phase 1a – People with disability living in shared accommodation



	Total people with at least one dose	People fully vaccinated	Total number of individuals in cohort	Total doses administered	% People with at least one dose	% People fully vaccinated
NDIS participants living in shared accommodation **	20,049	17,391	27,293	37,440	73.5%	63.7%
NDIS screened workers ***	133,021	101,264	189,644	234,285	70.1%	53.4%

\* Updates are available Monday to Friday on participants, and bi-weekly for workers, numbers may be up to four days old.

\*\* Shared accommodation means two or more people with disability living in shared residential accommodation and NDIS participants living in Residential Aged Care accommodation as per the eligibility criteria of Phase 1a.

\*\*\* Total number of workers within the NDIS Commission Worker Screening database who have ever been successfully screened and linked to an NDIS registered provider or participant.

Source: Linkage between National Disability Insurance Agency data, NDIS Quality and Safeguards Commission data and the Australian Immunisation Register.



## Residential aged care vaccination rollout

### Residential aged care facilities status

**100%** Commonwealth facilities visited (2,569 planned sites)

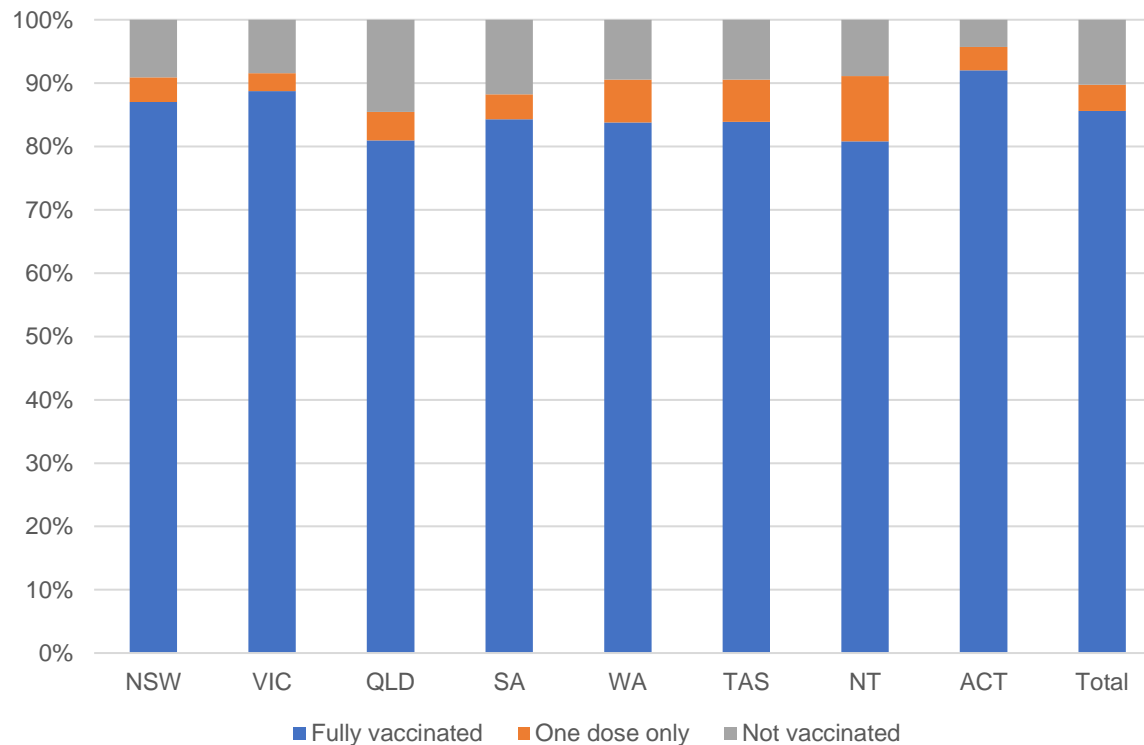
**159,550** People fully vaccinated

**89.7%** Participation rate

Australia's COVID-19 Vaccine Roadmap

Data as at:  
16 September 2021\*

### Aged care resident vaccinations



### Aged care worker vaccinations

Jurisdictions	Total workers with at least one dose	Workers fully vaccinated	% Workers with at least one dose	% Workers fully vaccinated
NSW	77,605	64,609	97.1%	80.8%
VIC	69,831	57,721	96.7%	79.9%
QLD	46,770	35,836	96.2%	73.7%
SA	25,822	21,018	96.5%	78.5%
WA	22,996	16,269	98.3%	69.5%
TAS	7,328	6,088	96.9%	80.5%
NT	827	782	95.4%	90.2%
ACT	2,898	2,453	98.2%	83.2%
Total	254,077	204,776	96.9%	78.1%

Source: My Aged Care Portal staff vaccination progress

\*\*Resident vaccination information is reported manually by service providers

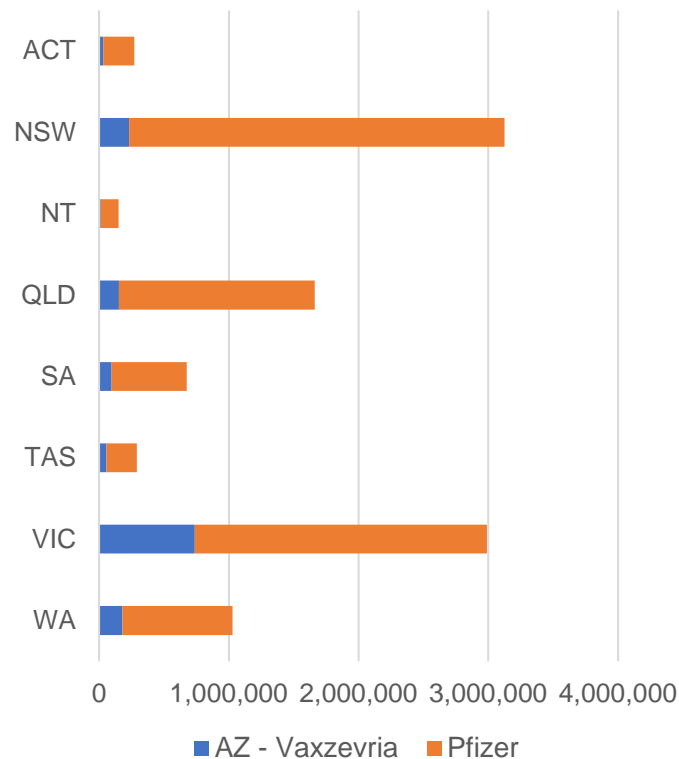
\*Status updates are provided by facilities at least once per week. Reporting is updated Monday to Friday to encompass different facility updates being made on different days.

Data is sourced directly from Aged Care Service Providers and is not drawn or closely aligned with data from AIR due to inconsistencies and potential lags in uploading of records.

Data as at:  
16 September 2021

# Jurisdiction administered

Total vaccine doses administered in State and Territory clinics as at 16 September



**10,192,678** total vaccine doses administered  
in State and Territory clinics as at 16 September  
+ **120,054** recorded in the last 24 hours  
+ **807,044** recorded in the last 7 days

**NSW**  
**3,126,048**  
(+22,984 daily  
increase)

**VIC**  
**2,990,363**  
(+42,674 daily  
increase)

**QLD**  
**1,661,588**  
(+23,076 daily  
increase)

**WA**  
**1,028,664**  
(+12,343 daily  
increase)

**TAS**  
**290,400**  
(+4,024 daily  
increase)

**SA**  
**676,116**  
(+8,931 daily  
increase)

**ACT**  
**270,610**  
(+4,478 daily  
increase)

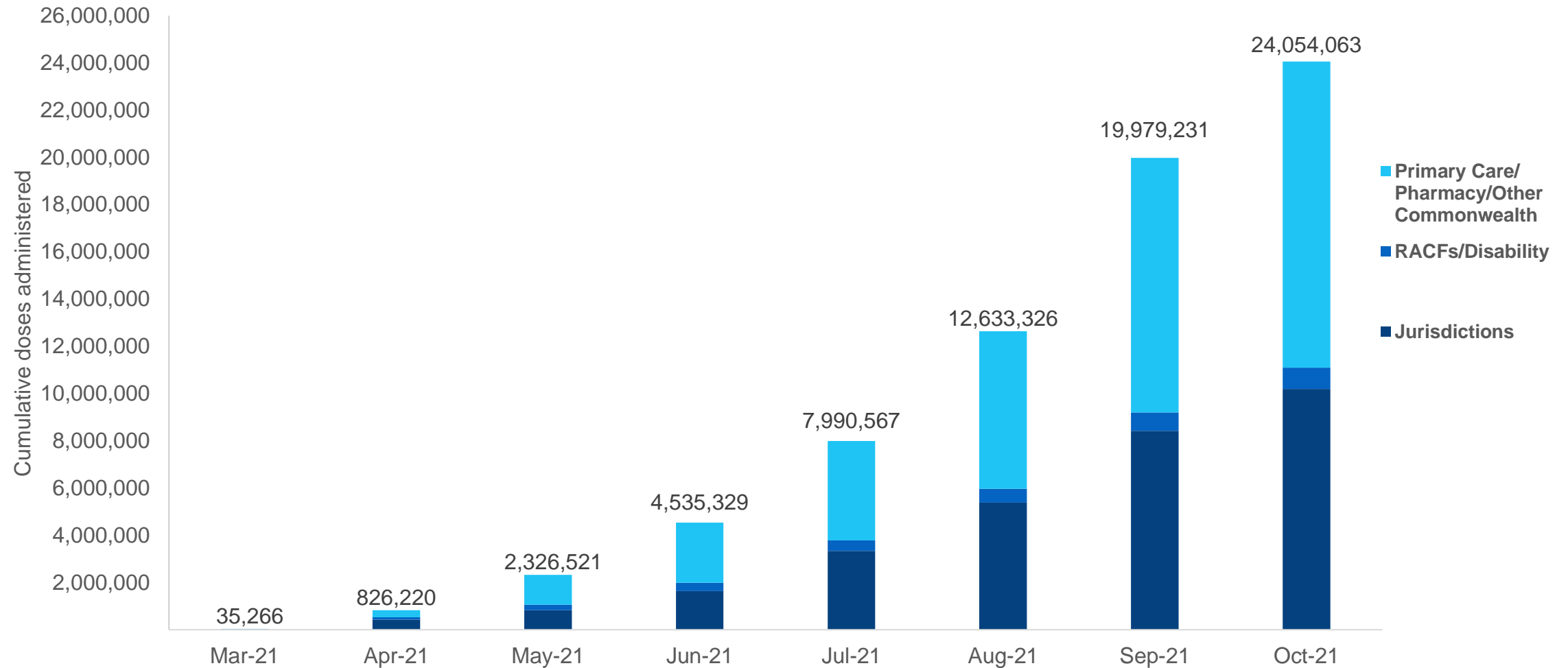
**NT**  
**148,889**  
(+1,544 daily  
increase)

\*Sourced from the Australian Immunisation Register and self-reported data. Numbers are calculated as difference in daily cumulative reported numbers to allow for historical corrections in all self-reported data sources.

# Cumulative doses administered by channel

Data as at:  
16 September 2021

Australia's COVID-19  
Vaccine Roadmap



Source: Australian Immunisation Register

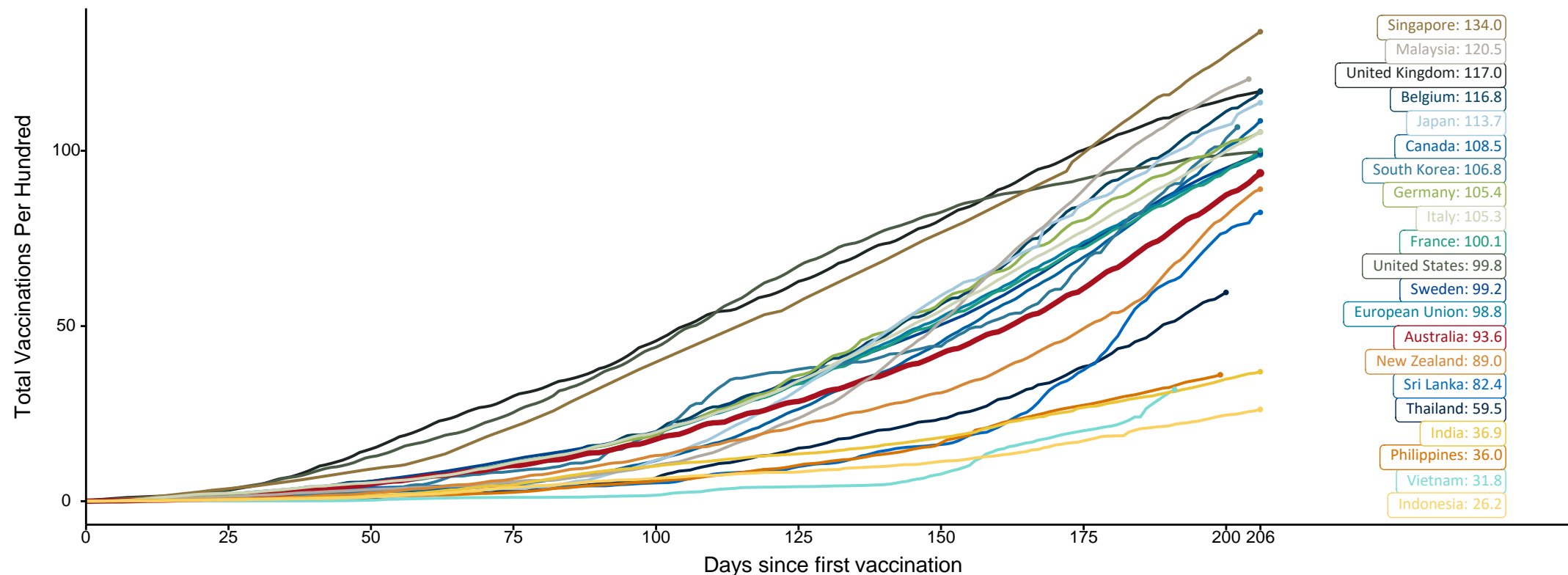


# Doses at equivalent stages of rollout (Day 206)

Data as at:  
16 September 2021

The x-axis is truncated at the length of Australia's vaccination program. Countries with intermittent reporting have had their doses per 100 imputed to Australia's current stage of rollout. Israel excluded as it is beyond scale of the graph

Cumulative doses administered (16 Sep): **24,054,063**



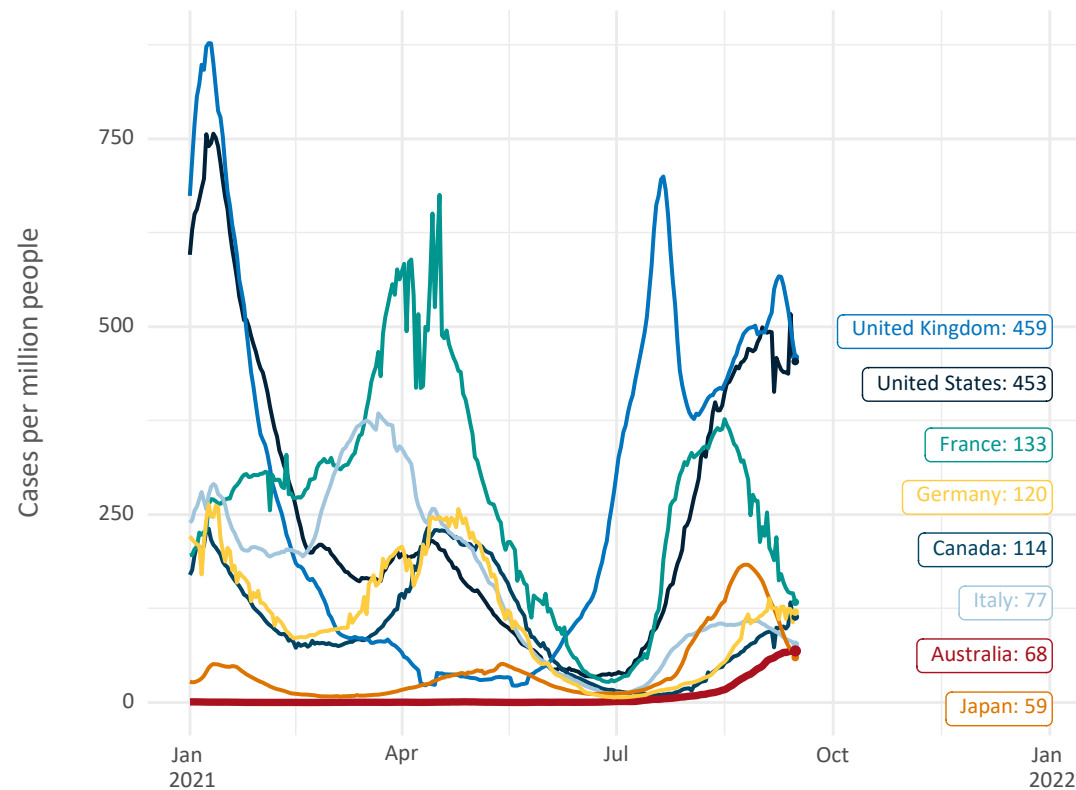
Note: From 15 September 2021, data for Australia includes all doses administered to people 12 and over. Prior to 15 September, data was for 16 and over  
Source: Department of Health (Australia), Our World in Data (international)  
Latest data: 16 September



# International data – COVID-19

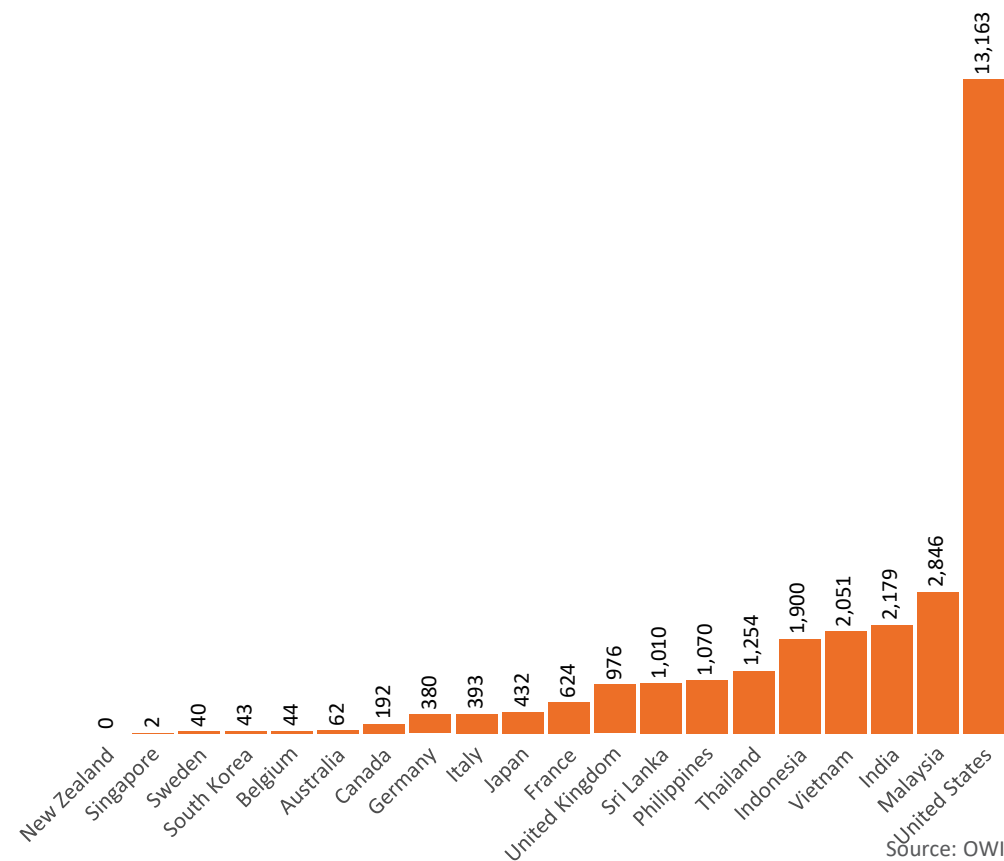
Data as at:  
16 September 2021

New daily cases per million in 2021, Australia and G7 countries  
Smoothed - 7 day average



Source: OWID  
Data downloaded: 17 Sep 2021 09:33  
Latest data: 15 Sep 2021

COVID-19 deaths in past 7 days - Australia and select countries



Source: OWID  
Data downloaded: 17 Sep 2021 09:33  
Latest data: 15 Sep 2021

# Pandemic Response Payments

Australia's COVID-19  
Vaccine Roadmap

Data as at midnight:  
16 Sep 2021



**2.06 million**

People have received at least one COVID  
Disaster Payment (including ISP200)

**\$7.41 billion**

Paid Out as at 16 Sep 2021

**3.45 million**

Claims granted across  
three different payments



**93%**

of Claims  
Received Digitally



**COVID Disaster Payment:**

3.38 million claims received - 1.90 million individuals paid a total of \$7.19 billion.

**\$200 Income Support Payment:**

201,000 claims received - 157,000 individuals paid a total of \$138.61 million.

**Pandemic Leave Disaster Payment:**

62,000 claims received - 54,000 individuals paid a total of \$85.16 million.



**THREE  
PAYMENTS  
AVAILABLE**

## COVID Disaster Payment

assisting during a lockdown  
event in a Commonwealth  
hotspot.

## Income Support Payment \$200

for income support  
recipients who lost at  
least 8 hours of work.

## Pandemic Leave Disaster Payment

for those who have  
to self-isolate,  
quarantine or care.

For more information visit:  
[servicesaustralia.gov.au](https://servicesaustralia.gov.au)

## COVID-19 DISASTER PAYMENTS

### New South Wales

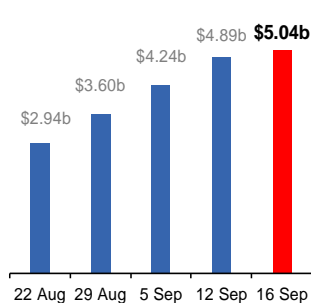
Active lockdown since 24 Jun

**1.03m people have  
received at least one  
COVID Disaster Payment.**

**\$5.04b paid out as at  
16 Sep 2021.**

**\$647m paid in initial and  
reoccurring payments in the  
week ending 12 Sep 2021.**

Cumulative payments made by State since  
activation on 1 Jul 2021.



### Victoria

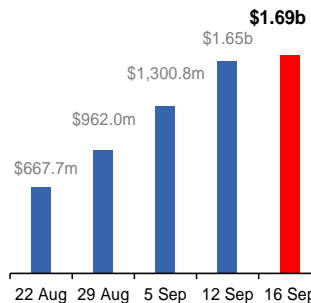
Active lockdown (#6) since 6 Aug

**520,000 people have  
received at least one  
COVID Disaster Payment.**

**\$1.69b paid out as at  
16 Sep 2021.**

**\$346m paid in initial and  
reoccurring payments in the  
week ending 12 Sep 2021.**

Cumulative payments made by State since  
activation on 8 Jun 2021.



### Australian Capital Territory

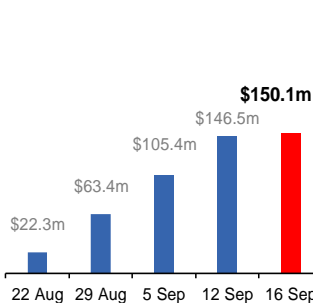
Active lockdown since 12 Aug

**60,000 people have  
received at least one  
COVID Disaster Payment.**

**\$150.1m paid out as at  
16 Sep 2021.**

**\$41m paid in initial and  
reoccurring payments in the  
week ending 12 Sep 2021.**

Cumulative payments made by State since  
activation on 20 Aug 2021.



### Northern Territory

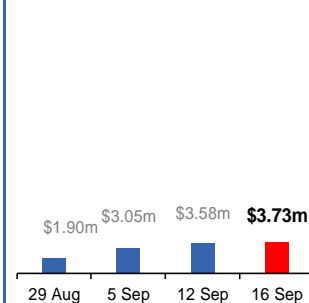
Lockdown from 18 – 20 Jul  
Claiming period ends 13 Sep

**5,762 people have  
received at least one  
COVID Disaster Payment.**

**\$3.73m paid out as at  
16 Sep 2021.**

**\$533,000 paid in initial  
payments in the week  
ending 12 Sep 2021.**

Cumulative payments made by State since  
activation on 25 Aug 2021.



### Queensland

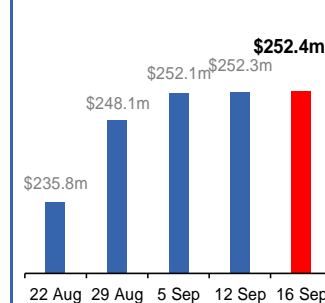
Lockdown from 31 Jul – 11 Aug  
Claiming period ended 28 Aug

**196,000 people have  
received at least one  
COVID Disaster Payment.**

**\$252.4m paid out as at  
16 Sep 2021.**

**\$194,000 paid in initial  
and reoccurring payments in the  
week ending 12 Sep 2021.**

Cumulative payments made by State since  
activation on 7 Aug 2021.



### South Australia

Lockdown from 21 – 27 Jul  
Claiming period ended 17 Aug

**86,000 people have  
received at least one  
COVID Disaster Payment.**

**\$48.2m paid out as at  
16 Sep 2021.**

**\$18,000 paid in initial  
payments in the week  
ending 12 Sep 2021.**

Cumulative payments made by State since  
activation on 28 Jul 2021.

