



Australian Government
Operation COVID Shield

COVID-19 Vaccine Roll-out

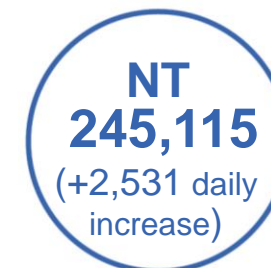
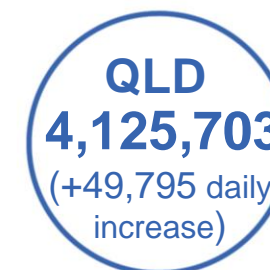
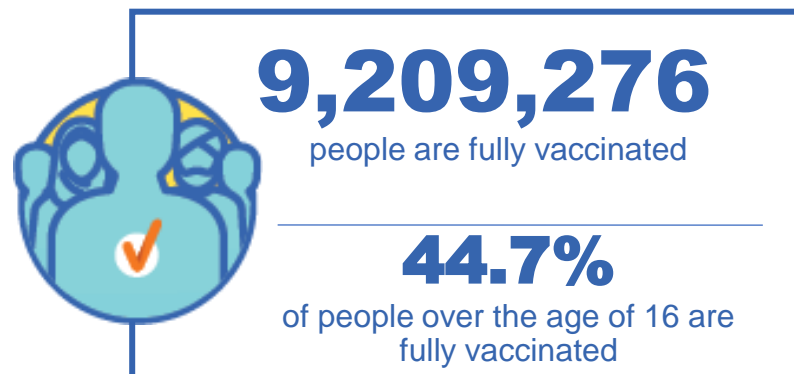
16 September 2021

Data as at:
15 Sep 2021

Total vaccine doses



23,751,922 total vaccine
doses administered nationally as at 15 September
+ 305,799 recorded in the last 24 hours



*Administration state breakdown indicates state in which a vaccine was administered

**Overall dose count includes instances of more than two doses per person in a small number of cases.

*** Total doses includes persons aged 12-15 years old. Doses recorded in the last 24 hours does not include historical 12-15 year old doses.

Source: Australian Immunisation Register

Data as at:
15 Sep 2021

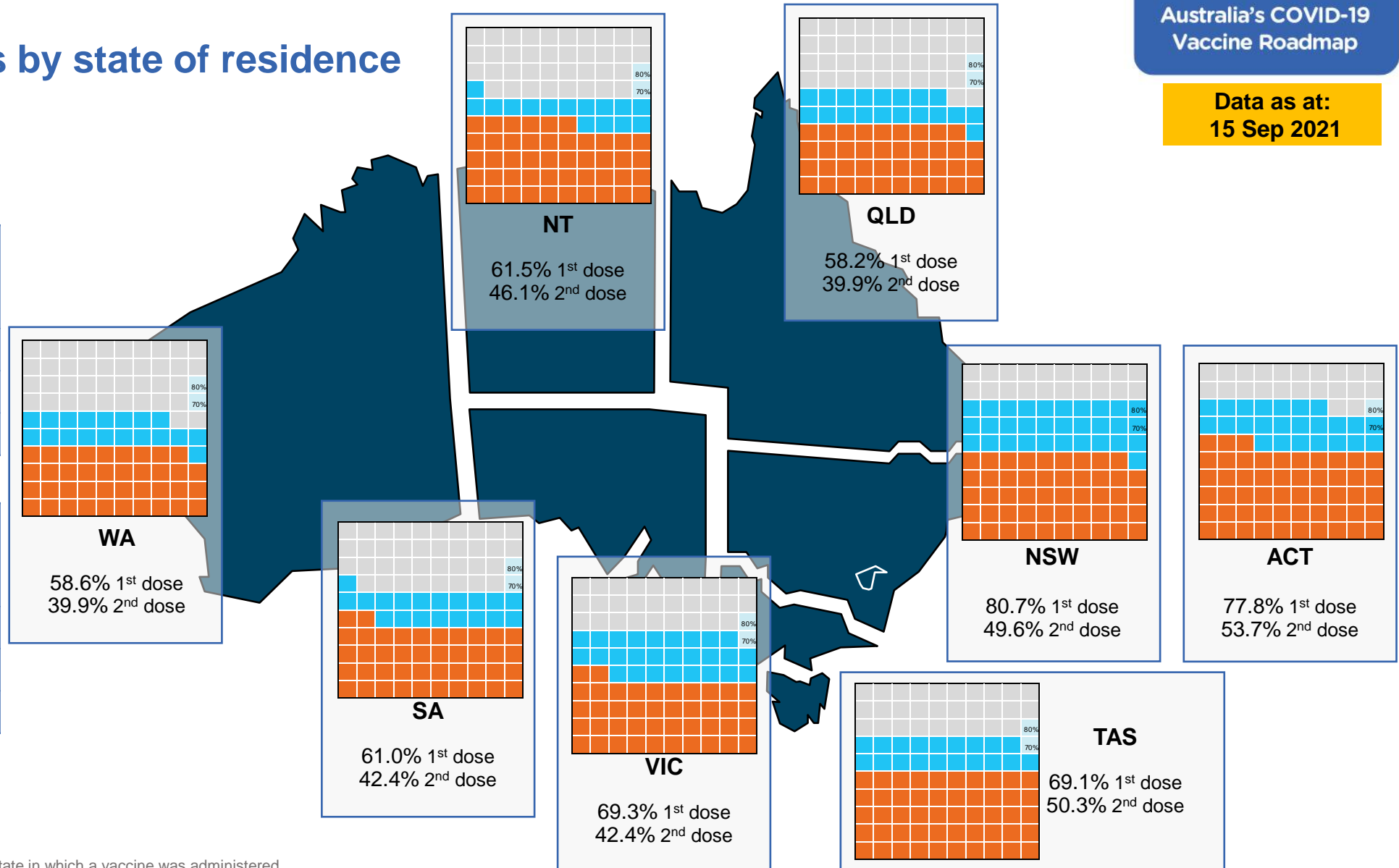
Vaccinations by state of residence

First doses

Age	Today	4 weeks ago	8 weeks ago
16+	69.8%	51.0%	37.3%
50+	85.0%	74.4%	62.3%
70+	91.7%	85.2%	77.9%

Fully vaccinated

Age	Today	4 weeks ago	8 weeks ago
16+	44.7%	28.8%	15.5%
50+	63.8%	42.2%	20.9%
70+	72.6%	56.0%	35.2%



*Residential state may differ from the state in which a vaccine was administered

Commonwealth and Jurisdiction vaccine doses administered

Data as at:
15 Sep 2021



23,751,922 total vaccine
doses administered nationally as at 15 September
+ 389,182 increase from yesterday



10,072,624
doses administered by state
and territory facilities
+ 157,842
recorded in the last 24 hours



13,679,298
doses administered by
commonwealth facilities
+ 231,340
recorded in the last 24 hours

12,785,229 total vaccine doses
administered in primary care settings
894,069 total vaccine doses
administered in aged care and disability
settings

NSW	Jurisdictions	Commonwealth
Cumulative	3,103,064	5,452,497
Daily increase	43,943	114,401

VIC	Jurisdictions	Commonwealth
Cumulative	2,947,689	3,182,972
Daily increase	50,328	51,247

QLD	Jurisdictions	Commonwealth
Cumulative	1,638,512	2,487,191
Daily increase	27,608	35,402

WA	Jurisdictions	Commonwealth
Cumulative	1,016,321	1,092,804
Daily increase	13,763	12,601

TAS	Jurisdictions	Commonwealth
Cumulative	286,376	240,549
Daily increase	4,331	2,152

SA	Jurisdictions	Commonwealth
Cumulative	667,185	824,969
Daily increase	9,278	9,953

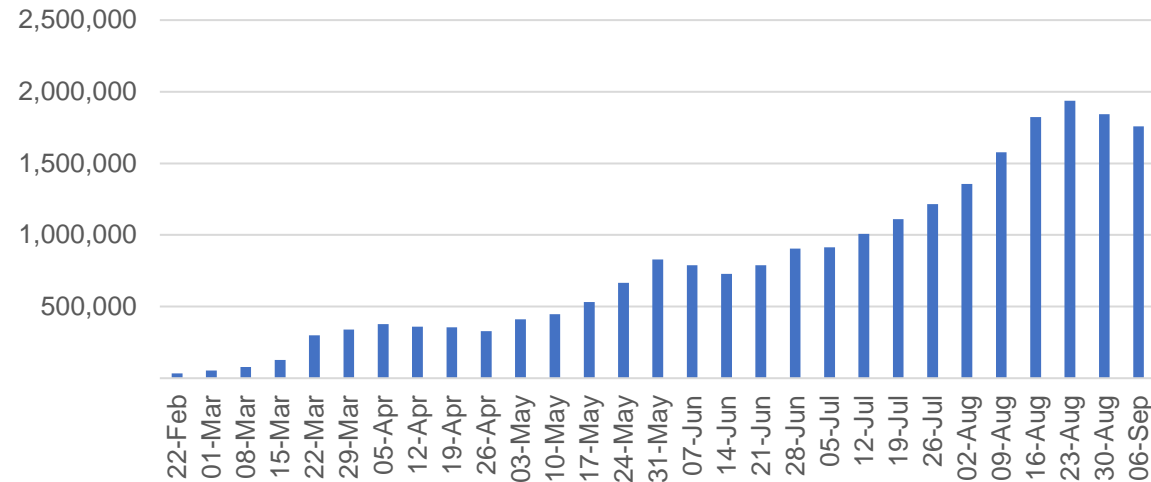
ACT	Jurisdictions	Commonwealth
Cumulative	266,132	300,546
Daily increase	5,052	3,818

NT	Jurisdictions	Commonwealth
Cumulative	147,345	97,770
Daily increase	3,539	1,766

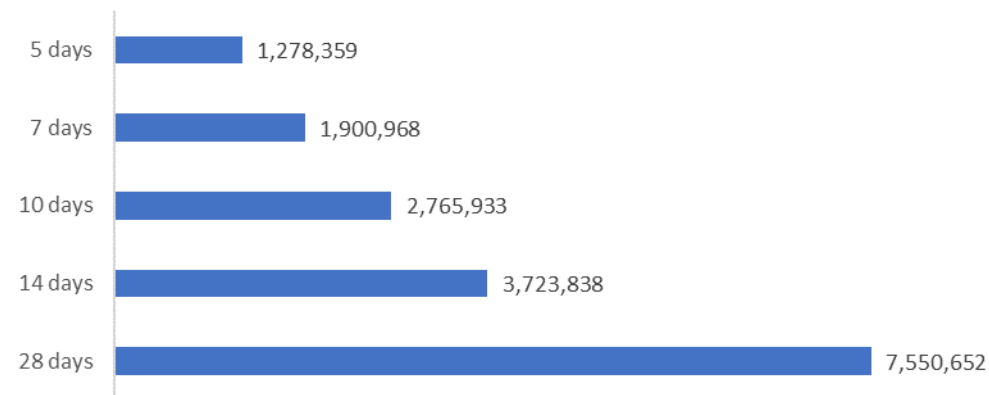
* Total doses includes persons aged 12-15 years old now included. Recorded in last 24 hours is calculated as the difference between today's and yesterday's reported totals and will include some doses for 12-15 year olds from prior days.

Vaccine milestone charts

Jabs in arms by week



Doses reported

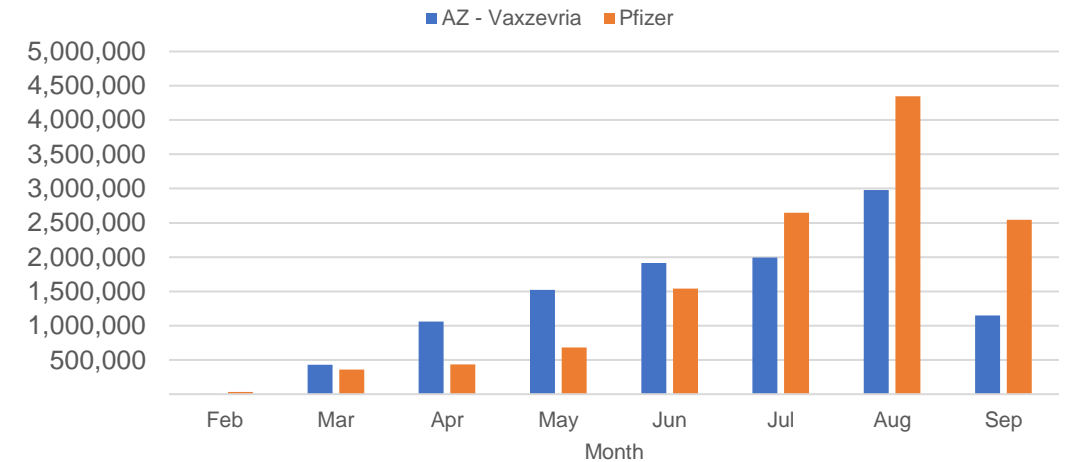


*Sourced from the Australian Immunisation Register.

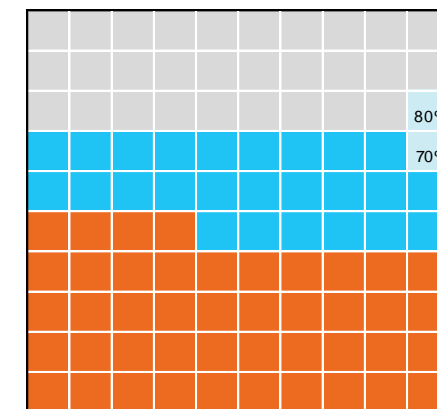
Data as at:
15 Sep 2021

Australia's COVID-19
Vaccine Roadmap

Doses by administration month and vaccine type



Eligible population percentage coverage



1st dose: 69.8% 2nd dose: 44.7%

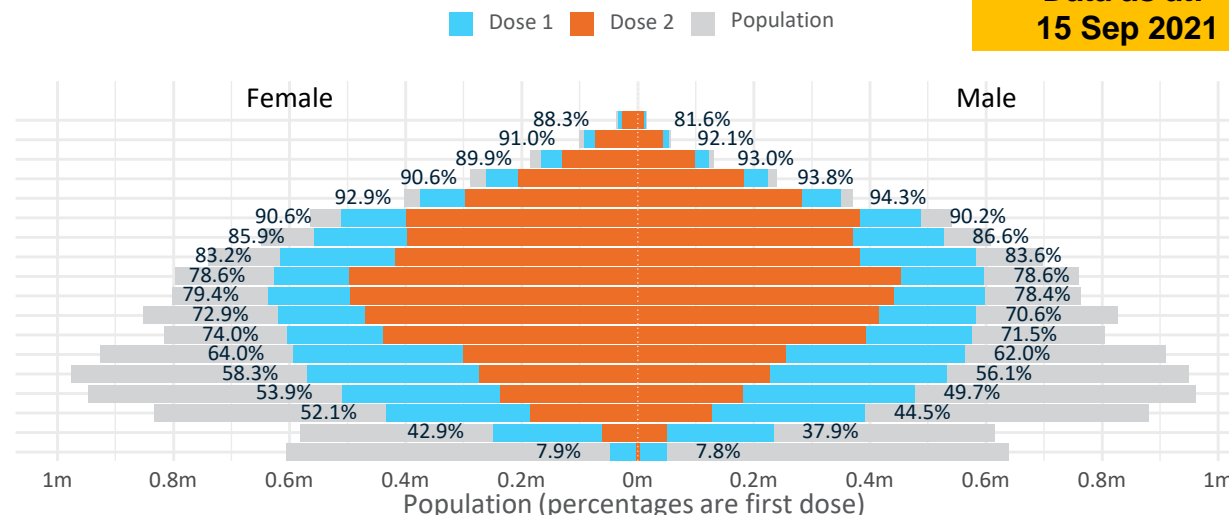
*Each square represents 1% of the national population. Squares are filled as milestones are achieved.

Doses by age and sex

First and second doses by age and sex

Data as at:
15 Sep 2021

Age	Dose 1	Dose 2
95+	45,760 (86.5%)	36,831 (69.6%)
90-94	144,989 (91.5%)	115,725 (73.0%)
85-89	288,456 (91.2%)	228,225 (72.2%)
80-84	486,516 (92.1%)	388,582 (73.5%)
75-79	724,697 (93.7%)	580,516 (75.0%)
70-74	999,755 (90.5%)	779,913 (70.6%)
65-69	1,086,005 (86.3%)	767,616 (61.0%)
60-64	1,199,481 (83.5%)	801,115 (55.8%)
55-59	1,223,931 (78.7%)	949,268 (61.0%)
50-54	1,236,256 (79.0%)	937,927 (59.9%)
45-49	1,204,527 (71.8%)	884,212 (52.7%)
40-44	1,180,003 (72.8%)	832,881 (51.4%)
35-39	1,159,637 (63.2%)	556,812 (30.3%)
30-34	1,106,796 (57.5%)	502,814 (26.1%)
25-29	995,048 (52.2%)	420,872 (22.1%)
20-24	829,812 (48.5%)	315,137 (18.4%)
16-19	482,705 (40.4%)	110,830 (9.3%)
12-15	97,397 (7.8%)	6,506 (0.5%)



	AUS	ACT	NSW	NT	QLD	SA	TAS	VIC	WA
16 and over - dose 1	14,394,374	267,580	5,296,975	117,128	2,392,360	879,084	304,304	3,749,369	1,239,763
16 and over - dose 2	9,209,276	184,782	3,256,358	87,846	1,642,887	610,643	221,428	2,294,740	844,041
16 and over - population	20,619,959*	344,037	6,565,651	190,571	4,112,707	1,440,400	440,172	5,407,574	2,114,978
16 and over % with dose 1	69.81%	77.78%	80.68%	61.46%	58.17%	61.03%	69.13%	69.34%	58.62%
16 and over % with dose 2	44.66%	53.71%	49.60%	46.10%	39.95%	42.39%	50.30%	42.44%	39.91%
50 and over - dose 1	7,435,846	124,682	2,535,415	46,065	1,387,912	536,378	184,927	1,884,359	690,107
50 and over - dose 2	5,585,718	101,448	1,873,688	35,994	1,031,262	391,653	145,739	1,457,046	520,031
50 and over - population	8,749,703	127,802	2,807,793	62,280	1,758,855	674,384	220,036	2,211,211	885,370
50 and over % with dose 1	84.98%	>95%	90.30%	73.96%	78.91%	79.54%	84.04%	85.22%	77.95%
50 and over % with dose 2	63.84%	79.38%	66.73%	57.79%	58.63%	58.08%	66.23%	65.89%	58.74%
70 and over - dose 1	2,690,173	41,257	909,857	9,979	513,123	212,155	70,725	670,546	243,145
70 and over - dose 2	2,129,792	34,491	717,573	7,913	405,779	160,189	57,560	540,517	191,716
70 and over - population	2,934,706	39,946	962,606	12,343	577,767	240,514	77,155	743,519	280,281
70 and over % with dose 1	91.67%	>95%	94.52%	80.85%	88.81%	88.21%	91.67%	90.19%	86.75%
70 and over % with dose 2	72.57%	86.34%	74.54%	64.11%	70.23%	66.60%	74.60%	72.70%	68.40%
12 to 15 - dose 1	97,397	1,278	47,387	2,573	13,277	1,927	1,252	25,439	3,571
12 to 15 - dose 2	6,506	212	2,965	205	1,648	116	78	982	248
12 to 15 - population	1,243,990	19,693	390,330	13,060	270,146	82,747	26,308	308,611	132,869
12 to 15 % with dose 1	7.83%	6.49%	12.14%	19.70%	4.91%	2.33%	4.76%	8.24%	2.69%
12 to 15 % with dose 2	0.52%	1.08%	0.76%	1.57%	0.61%	0.14%	0.30%	0.32%	0.19%

*National population will not equal sum of listed jurisdictions due to a small number of people counted in national population residing in some 'other' territories. Sum of state doses will not add to national total as some records are unable to be geocoded to a State or Territory.

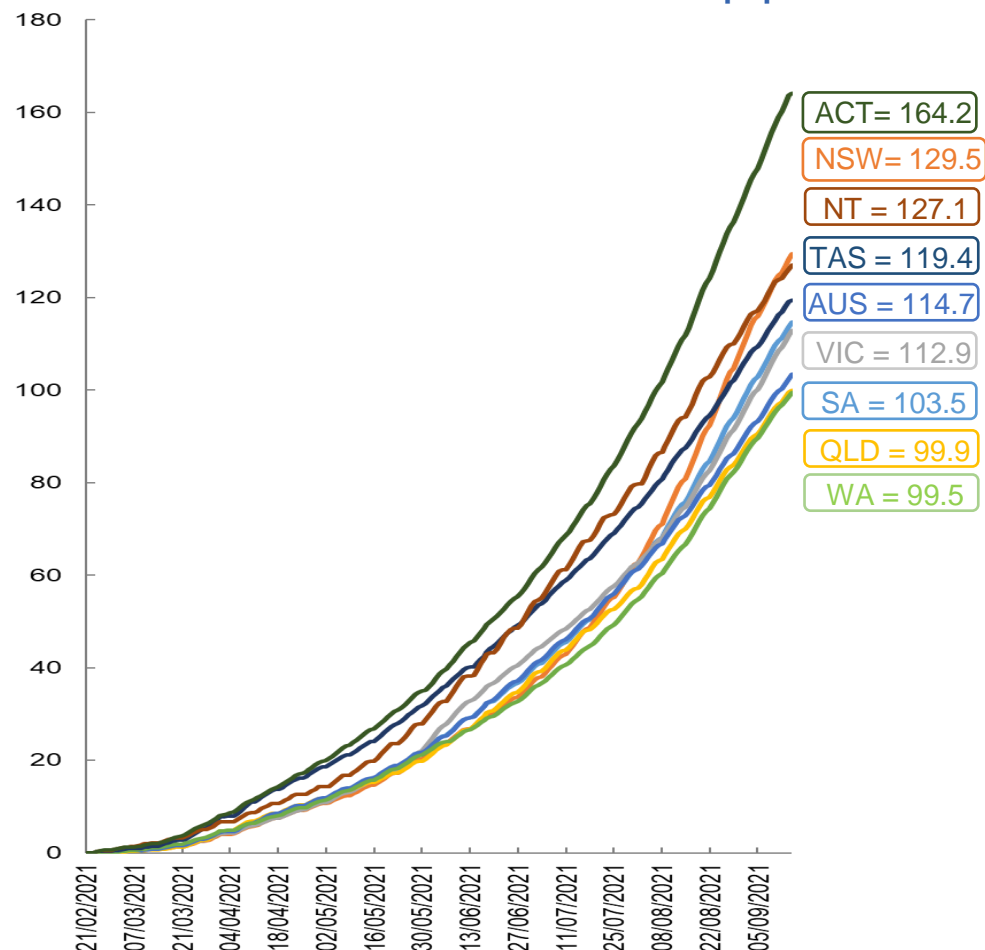
Doses sourced from Australian Immunisation Register, population from ABS ERP June 2020

Vaccinations by location

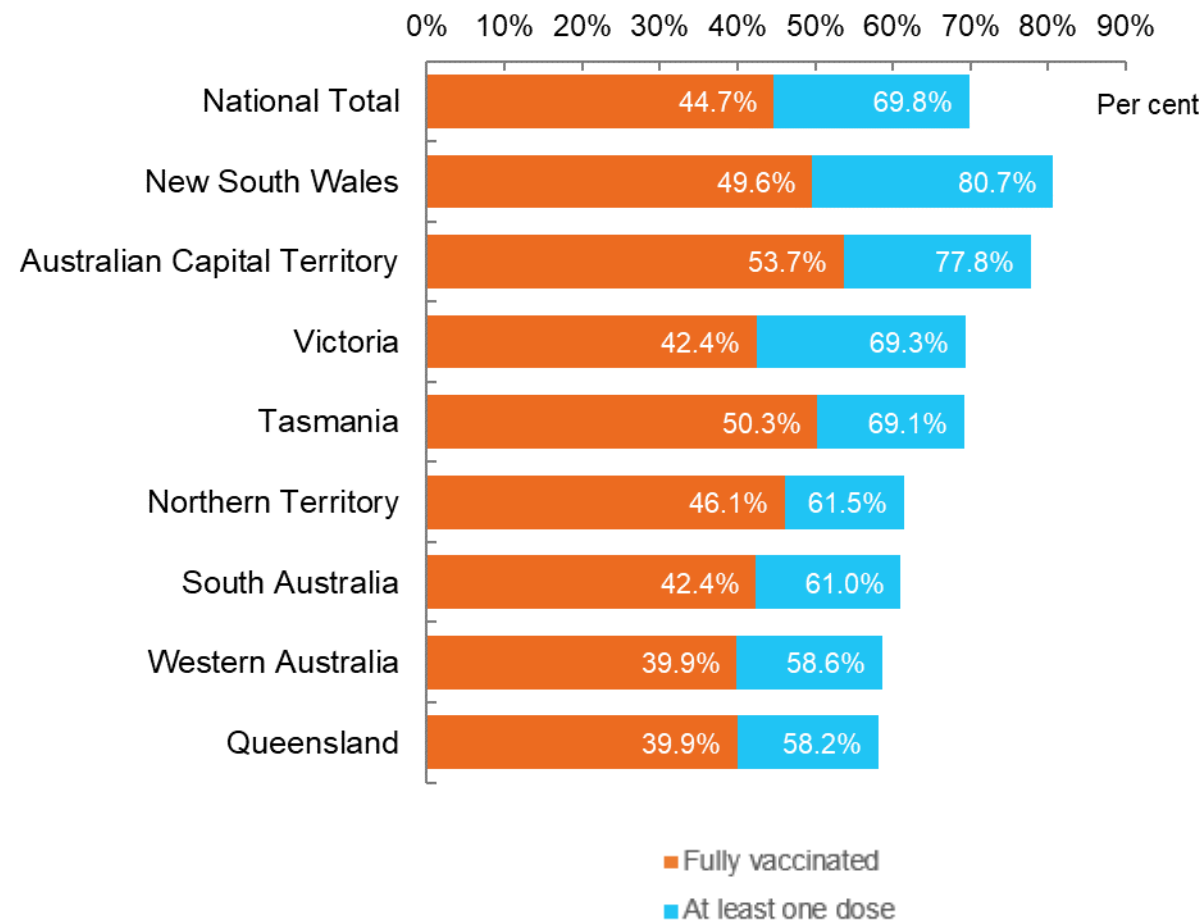
Data as at:
15 Sep 2021

Australia's COVID-19
Vaccine Roadmap

Cumulative total doses administered vs state populations*



First and Second Doses by state of residence



*Not an indication of percentage vaccinated, numbers will exceed 100 due to multiple doses required per person of the population

Aboriginal and Torres Strait Islander peoples

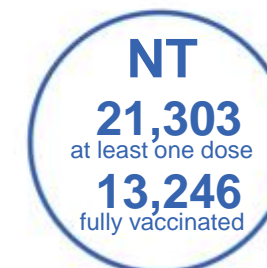
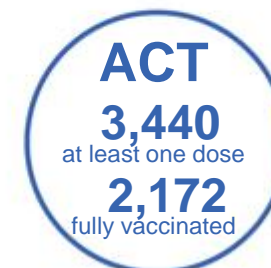
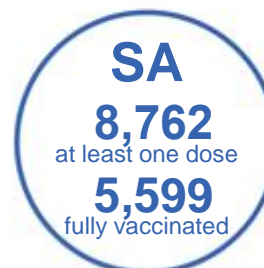
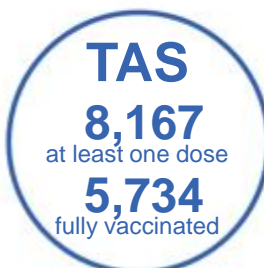
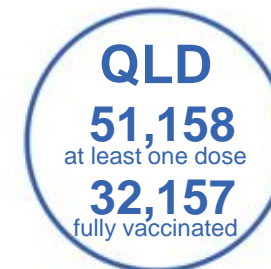
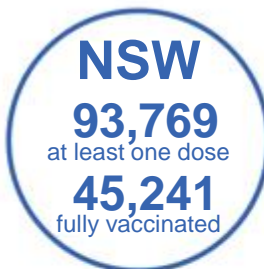
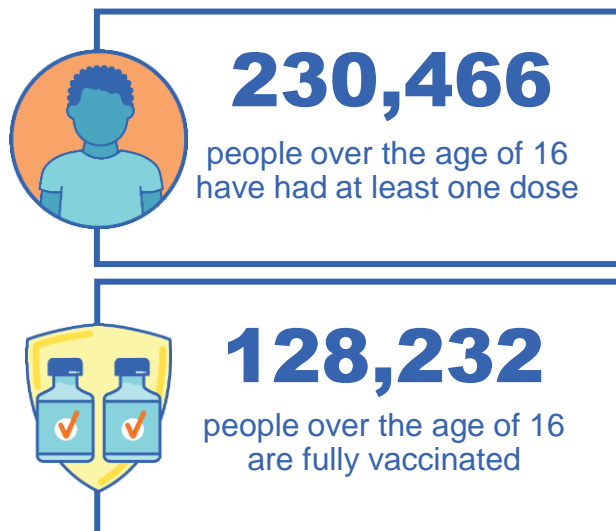
Number of people vaccinated

Data as at:
12 Sep 2021
Updated weekly

Australia's COVID-19
Vaccine Roadmap

166 Aboriginal community controlled health services (ACCHS)

0#	48	26	39	11	3	21	18
ACT	NSW	NT	QLD	SA	TAS	VIC	WA



6,321 people with at least one dose
3,052 people fully vaccinated

residing in other territories or with missing residential information

Source: Australian Immunisation Register

*Identifying as Aboriginal and Torres Strait Islander is optional and the estimated population may be under reported.

**Includes all Aboriginal and Torres Strait Islander peoples who have received a vaccination, not limited to those administered in an ACCHS setting

***Updated weekly.

****. Data corrections identified for Victoria have resulted in adjustments to the number of persons identifying as Aboriginal and Torres Strait Island

#ACCHS in the ACT are currently operating as a Commonwealth Vaccine Clinics so not included to avoid double counting

Data as at:
15 Sep 2021

Commonwealth primary care



Primary care vaccine administration sites

5,421	137	166	3,147
GPs	CVCs	ACCHS	Pharmacies



12,785,229 total vaccine doses administered primary care settings as at 15 September
+ 214,993 recorded in the last 24 hours

Primary care vaccinations by provider type

	Doses administered	Daily increase	7 day increase
General Practice* includes other Commonwealth	12,248,804	201,004	892,483
Pharmacy	536,425	13,989	93,819

NSW
5,059,148
(+107,167 daily increase)

VIC
3,014,605
(+47,890 daily increase)

QLD
2,308,213
(+29,516 daily increase)

WA
1,033,885
(+12,106 daily increase)

TAS
229,000
(+2,146 daily increase)

SA
773,635
(+9,561 daily increase)

ACT
216,728
(+3,163 daily increase)

NT
82,346
(+1,653 daily increase)

67,669 doses administered to persons residing in other territories or with missing residential information

*General practice includes Commonwealth Vaccination Clinics, Aboriginal Community Health Centres, Royal Flying Doctor Service and other Commonwealth vaccination facilities.
** Total doses includes persons aged 12-15 years old. Recorded in last 24 hours is calculated as the difference between today's and yesterday's reported totals.

Source: Australian Immunisation Register

Data as at:
15 Sep 2021

Commonwealth aged care and disability doses administered



894,069

(+ 16,347 last 24 hours)

Total vaccine doses administered in aged care and disability facilities as at 15 September

Number of doses administered as part of the Commonwealth aged and disability care rollout

NSW
411,117
(+7,601 daily increase)

VIC
169,200
(+1,909 daily increase)

QLD
144,761
(+5,451 daily increase)

WA
60,019
(+528 daily increase)

TAS
16,212
(+74 daily increase)

SA
54,159
(+433 daily increase)

ACT
10,551
(+103 daily increase)

NT
5,417
(+20 daily increase)

*Sourced from the Australian Immunisation Register. Includes all persons vaccinated at participating residential aged care, disability and related industry settings.

**State level breakdown indicates the residential location and may not align to the state in which the vaccination occurred.

*** Total doses includes persons aged 12-15 years old now included. Recorded in last 24 hours is calculated as the difference between today's and yesterday's reported totals and will include some doses for 12-15 year olds from prior days.

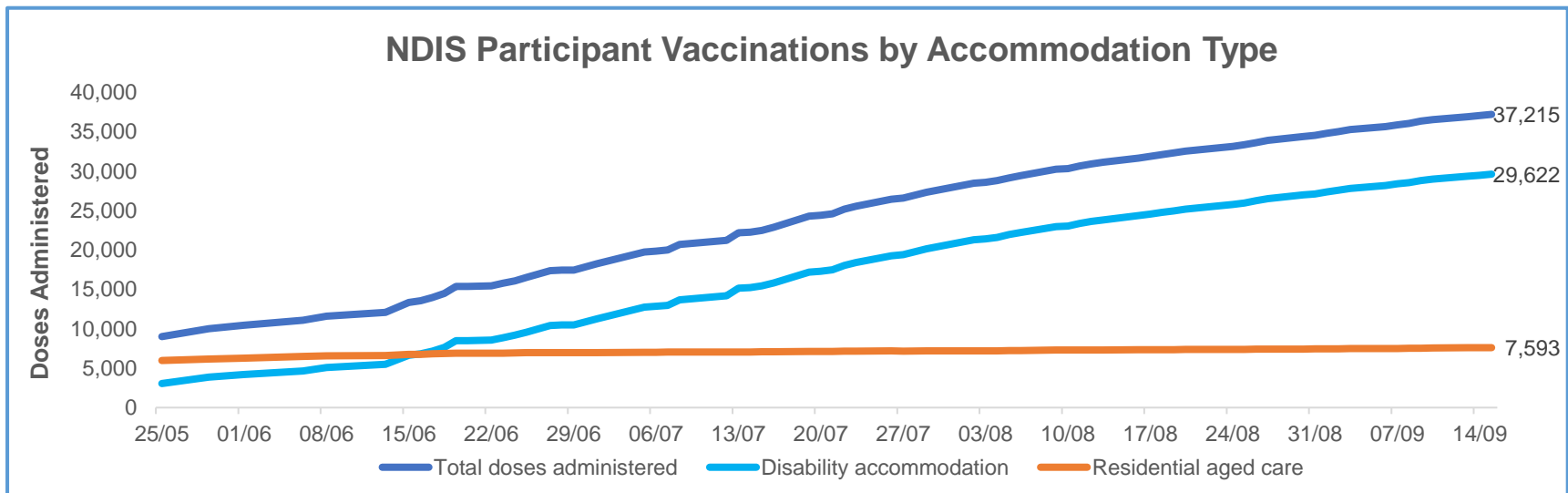
22,633

doses administered to persons residing in other territories or with missing residential information

Data as at:
15 September 2021*

Vaccination rate of people with disability and the disability workforce

Phase 1a – People with disability living in shared accommodation



	Total people with at least one dose	People fully vaccinated	Total number of individuals in cohort	Total doses administered	% People with at least one dose	% People fully vaccinated
NDIS participants living in shared accommodation **	19,963	17,252	27,293	37,215	73.1%	63.2%
NDIS screened workers ***	130,717	97,623	189,644	228,340	68.9%	51.5%

* Updates are available Monday to Friday on participants, and bi-weekly for workers, numbers may be up to four days old.

** Shared accommodation means two or more people with disability living in shared residential accommodation and NDIS participants living in Residential Aged Care accommodation as per the eligibility criteria of Phase 1a.

*** Total number of workers within the NDIS Commission Worker Screening database who have ever been successfully screened and linked to an NDIS registered provider or participant.

Source: Linkage between National Disability Insurance Agency data, NDIS Quality and Safeguards Commission data and the Australian Immunisation Register.



Residential aged care vaccination rollout

Residential aged care facilities status

100% Commonwealth facilities visited (2,569 planned sites)

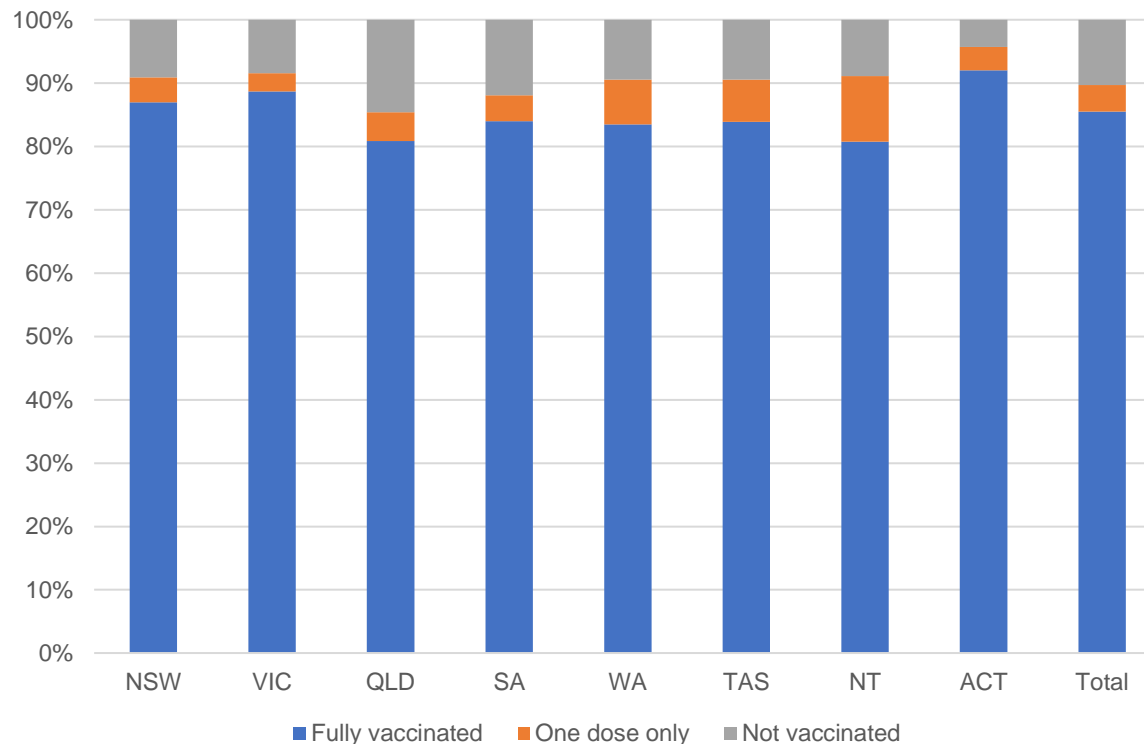
159,352 People fully vaccinated

89.7% Participation rate

Australia's COVID-19 Vaccine Roadmap

Data as at:
15 September 2021*

Aged care resident vaccinations



Aged care worker vaccinations

Jurisdictions	Total workers with at least one dose	Workers fully vaccinated	% Workers with at least one dose	% Workers fully vaccinated
NSW	77,721	64,097	96.2%	79.3%
VIC	69,652	57,405	95.4%	78.7%
QLD	46,090	34,968	94.1%	71.4%
SA	25,597	20,819	95.2%	77.5%
WA	22,546	16,015	94.2%	66.9%
TAS	7,310	6,060	94.7%	78.5%
NT	828	783	95.6%	90.4%
ACT	2,881	2,453	97.8%	83.2%
Total	252,625	202,600	95.3%	76.4%

Source: My Aged Care Portal staff vaccination progress

**Resident vaccination information is reported manually by service providers

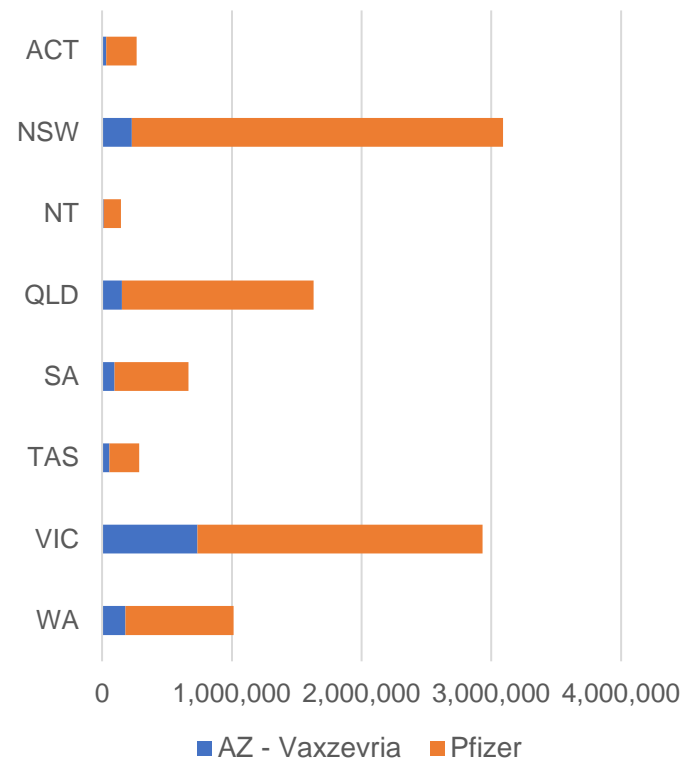
*Status updates are provided by facilities at least once per week. Reporting is updated Monday to Friday to encompass different facility updates being made on different days.

Data is sourced directly from Aged Care Service Providers and is not drawn or closely aligned with data from AIR due to inconsistencies and potential lags in uploading of records.

Data as at:
15 Sep 2021

Jurisdiction administered

Total vaccine doses administered in State and Territory clinics as at 15 September



10,072,624 total vaccine doses administered
in State and Territory clinics as at 15 September
+ **157,842** recorded in the last 24 hours
+ **844,845** recorded in the last 7 days

NSW
3,103,064
(+43,943 daily increase)

VIC
2,947,689
(+50,328 daily increase)

QLD
1,638,512
(+27,608 daily increase)

WA
1,016,321
(+13,763 daily increase)

TAS
286,376
(+4,331 daily increase)

SA
667,185
(+9,278 daily increase)

ACT
266,132
(+5,052 daily increase)

NT
147,345
(+3,539 daily increase)

*Sourced from the Australian Immunisation Register and self-reported data. Numbers are calculated as difference in daily cumulative reported numbers to allow for historical corrections in all self-reported data sources.

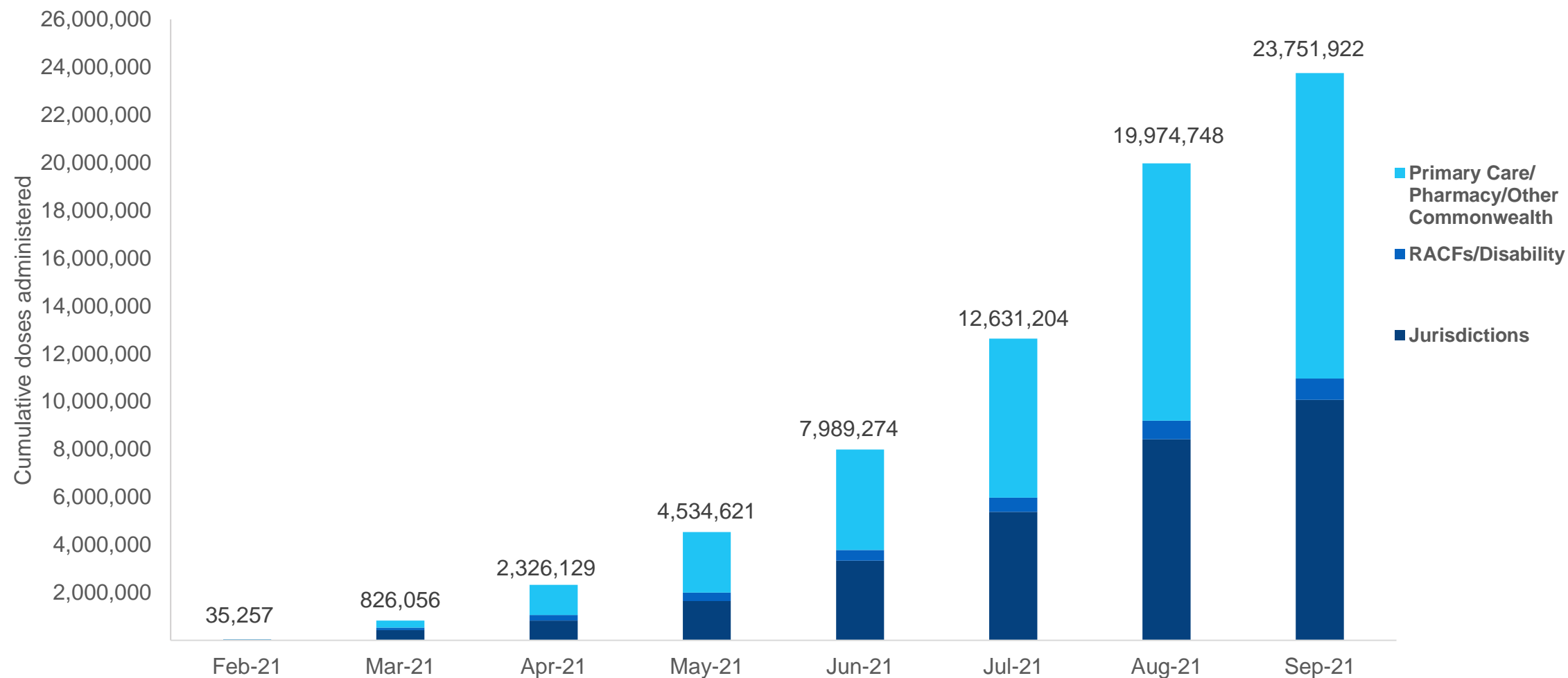
** Total doses includes persons aged 12-15 years old now included. Recorded in last 24 hours is calculated as the difference between today's and yesterday's reported totals and will include some doses for 12-15 year olds from prior days.

Source: Australian Immunisation Register

Cumulative doses administered by channel

Data as at:
15 Sep 2021

Australia's COVID-19
Vaccine Roadmap



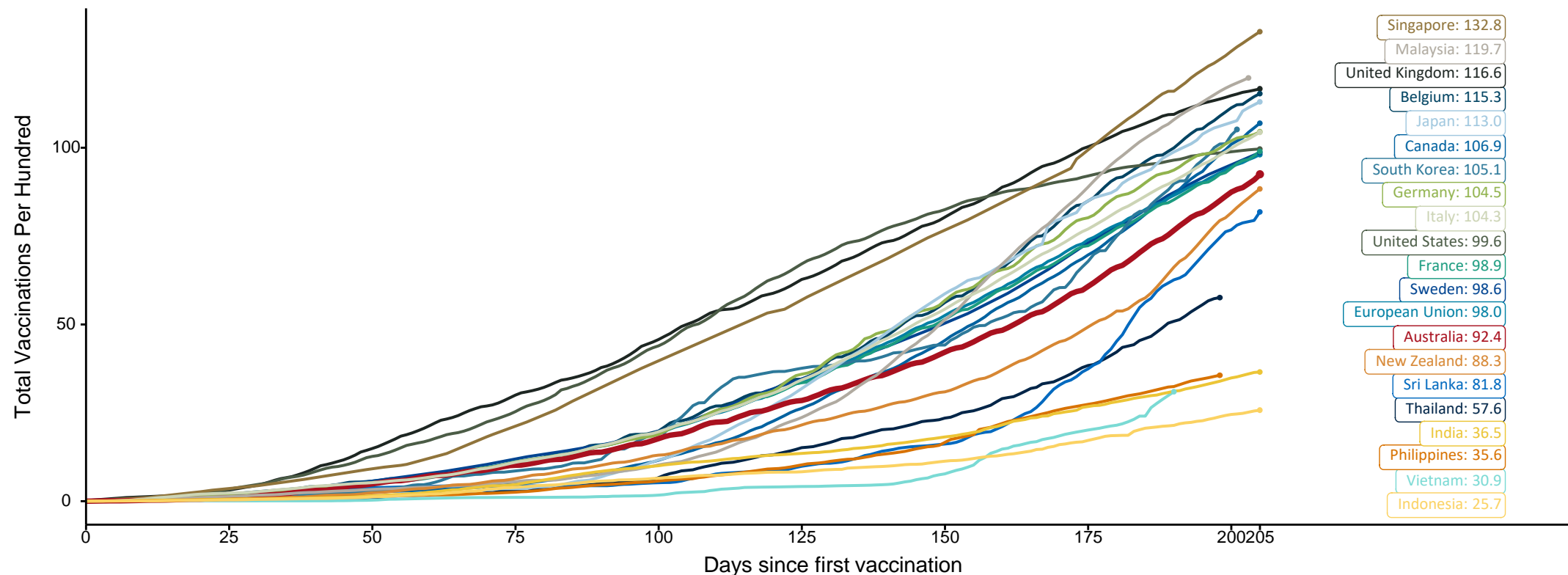
Source: Australian Immunisation Register

Doses at equivalent stages of rollout (Day 205)

Data as at:
15 Sep 2021

The x-axis is truncated at the length of Australia's vaccination program. Countries with intermittent reporting have had their doses per 100 imputed to Australia's current stage of rollout. Israel excluded as it is beyond scale of the graph

Cumulative doses administered (15 Sep): **23,751,922**

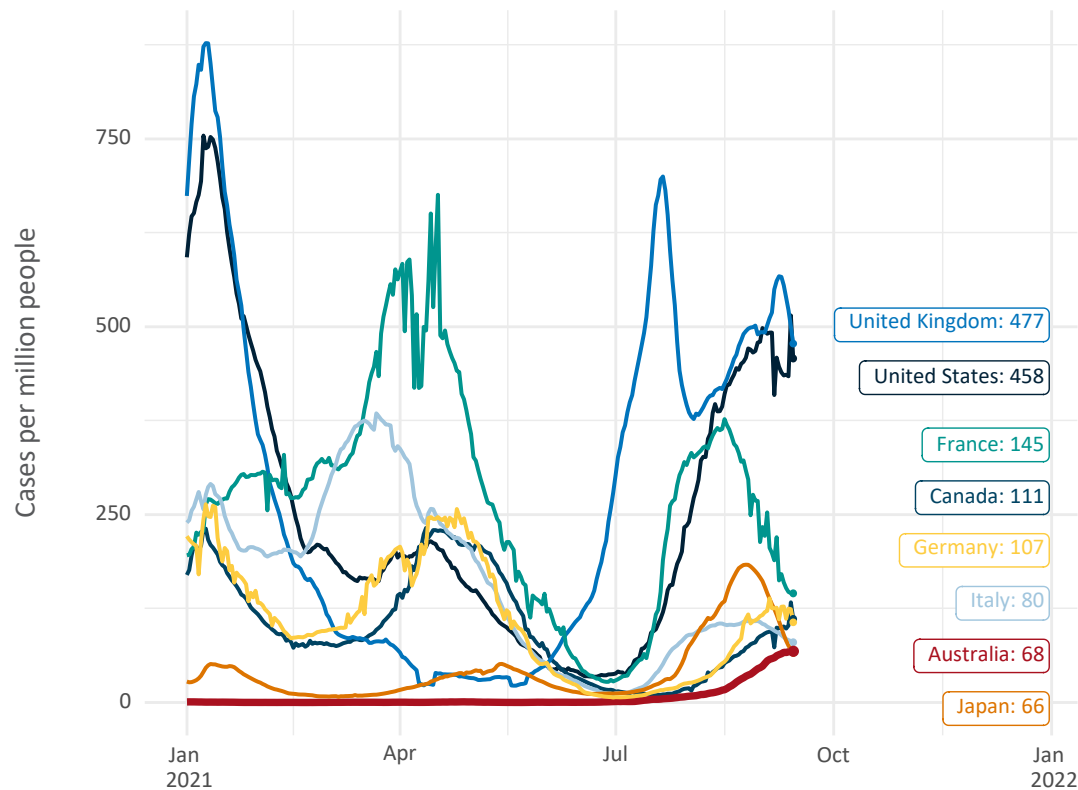


Note: From 15 September 2021, data for Australia includes all doses administered to people 12 and over. Prior to 15 September, data was for 16 and over
Source: Department of Health (Australia), Our World in Data (international)
Latest data: 15 September

Data as at:
15 Sep 2021

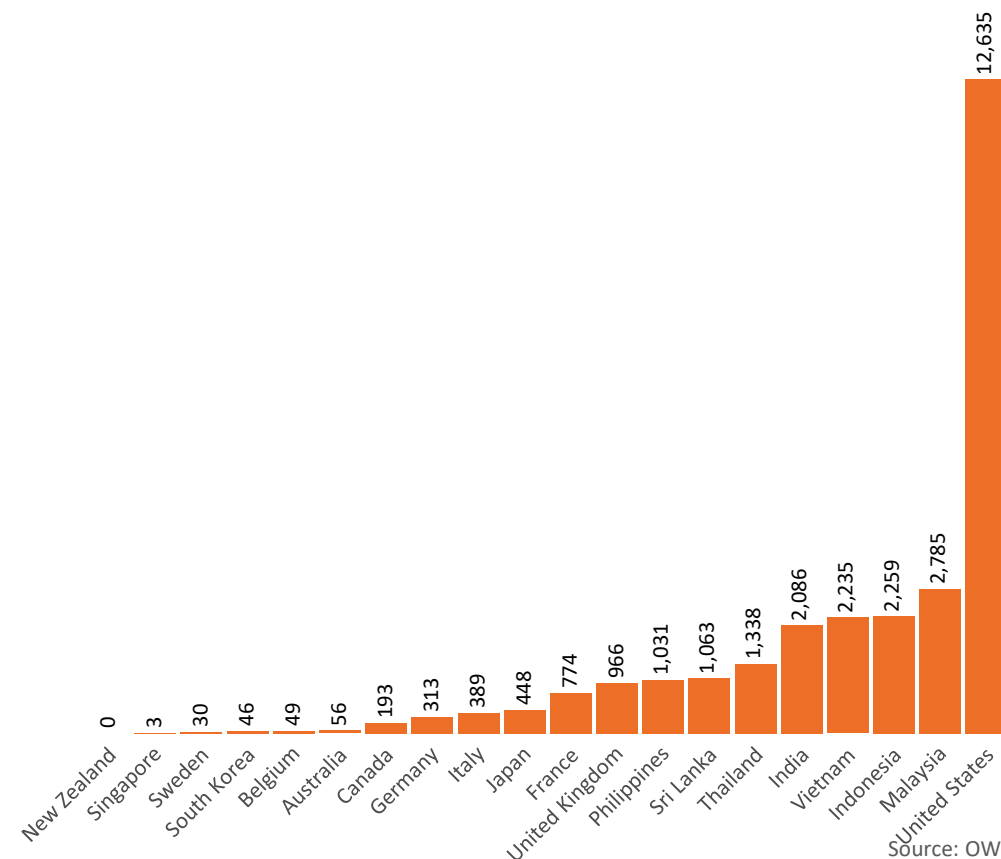
International data – COVID-19

New daily cases per million in 2021, Australia and G7 countries
Smoothed - 7 day average



Source: OWID
Data downloaded: 16 Sep 2021 08:14
Latest data: 14 Sep 2021

COVID-19 deaths in past 7 days - Australia and select countries



Source: OWID
Data downloaded: 16 Sep 2021 08:14
Latest data: 14 Sep 2021

Pandemic Response Payments

Australia's COVID-19
Vaccine Roadmap

Data as at midnight:
15 Sep 2021



2.05 million

People have received at least one COVID
Disaster Payment (including ISP200)

\$7.29 billion

Paid Out as at 15 Sep 2021

3.42 million

Claims granted across
three different payments



93%

of Claims
Received Digitally



COVID Disaster Payment:

3.37 million claims received - 1.89 million individuals paid a total of \$7.07 billion.

\$200 Income Support Payment:

200,000 claims received - 157,000 individuals paid a total of \$137.54 million.

Pandemic Leave Disaster Payment:

61,000 claims received - 53,000 individuals paid a total of \$83.35 million.



**THREE
PAYMENTS
AVAILABLE**

COVID Disaster Payment

assisting during a lockdown
event in a Commonwealth
hotspot.

Income Support Payment \$200

for income support
recipients who lost at
least 8 hours of work.

Pandemic Leave Disaster Payment

for those who have
to self-isolate,
quarantine or care.

For more information visit:
servicesaustralia.gov.au

COVID-19 DISASTER PAYMENTS

New South Wales

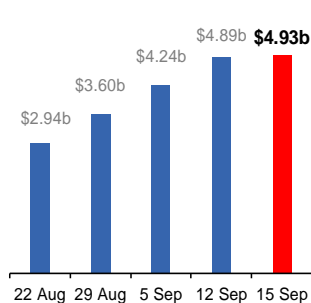
Active lockdown since 24 Jun

**1.03m people have
received at least one
COVID Disaster Payment.**

**\$4.93b paid out as at
15 Sep 2021.**

**\$647m paid in initial and
reoccurring payments in the
week ending 12 Sep 2021.**

Cumulative payments made by State since
activation on 1 Jul 2021.



Victoria

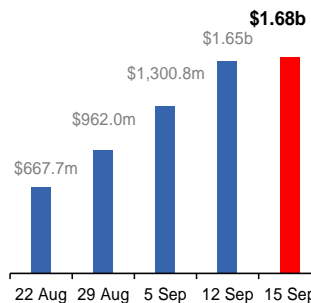
Active lockdown (#6) since 6 Aug

**516,000 people have
received at least one
COVID Disaster Payment.**

**\$1.68b paid out as at
15 Sep 2021.**

**\$346m paid in initial and
reoccurring payments in the
week ending 12 Sep 2021.**

Cumulative payments made by State since
activation on 8 Jun 2021.



Australian Capital Territory

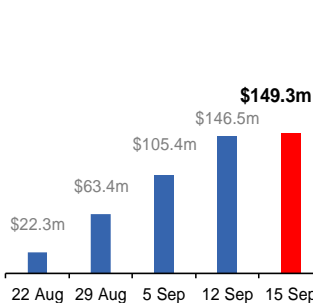
Active lockdown since 12 Aug

**60,000 people have
received at least one
COVID Disaster Payment.**

**\$149.3m paid out as at
15 Sep 2021.**

**\$41m paid in initial and
reoccurring payments in the
week ending 12 Sep 2021.**

Cumulative payments made by State since
activation on 20 Aug 2021.



Northern Territory

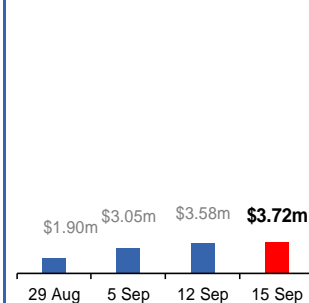
Lockdown from 18 – 20 Jul
Claiming period ends 13 Sep

**5,745 people have
received at least one
COVID Disaster Payment.**

**\$3.72m paid out as at
15 Sep 2021.**

**\$533,000 paid in initial
payments in the week
ending 12 Sep 2021.**

Cumulative payments made by State since
activation on 25 Aug 2021.



Queensland

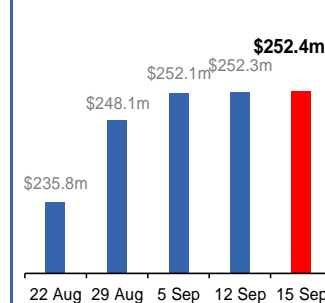
Lockdown from 31 Jul – 11 Aug
Claiming period ended 28 Aug

**196,000 people have
received at least one
COVID Disaster Payment.**

**\$252.4m paid out as at
15 Sep 2021.**

**\$194,000 paid in initial
and reoccurring payments in the
week ending 12 Sep 2021.**

Cumulative payments made by State since
activation on 7 Aug 2021.



South Australia

Lockdown from 21 – 27 Jul
Claiming period ended 17 Aug

**86,000 people have
received at least one
COVID Disaster Payment.**

**\$48.2m paid out as at
15 Sep 2021.**

**\$18,000 paid in initial
payments in the week
ending 12 Sep 2021.**

Cumulative payments made by State since
activation on 28 Jul 2021.

