



Australian Government
Operation COVID Shield

COVID-19 Vaccine Roll-out

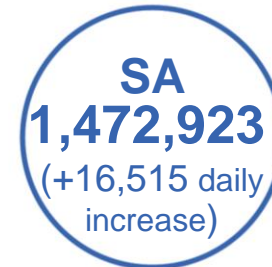
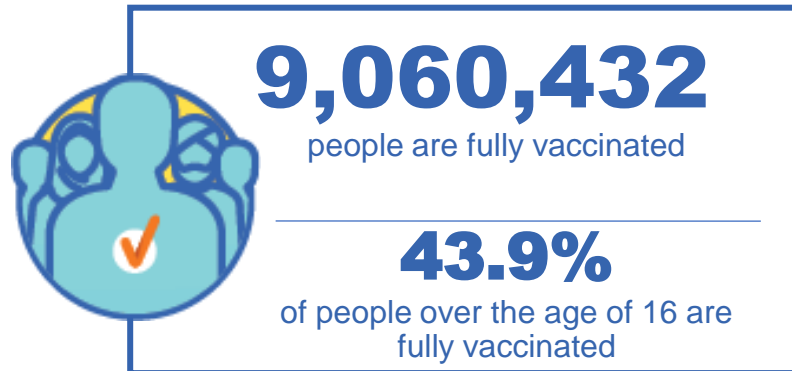
15 September 2021

Data as at:
14 Sep 2021

Total vaccine doses



23,362,740 total vaccine doses administered nationally as at 14 September
+283,991 recorded in the last 24 hours



*Administration state breakdown indicates state in which a vaccine was administered
**Overall dose count includes instances of more than two doses per person in a small number of cases.

Data as at:
14 Sep 2021

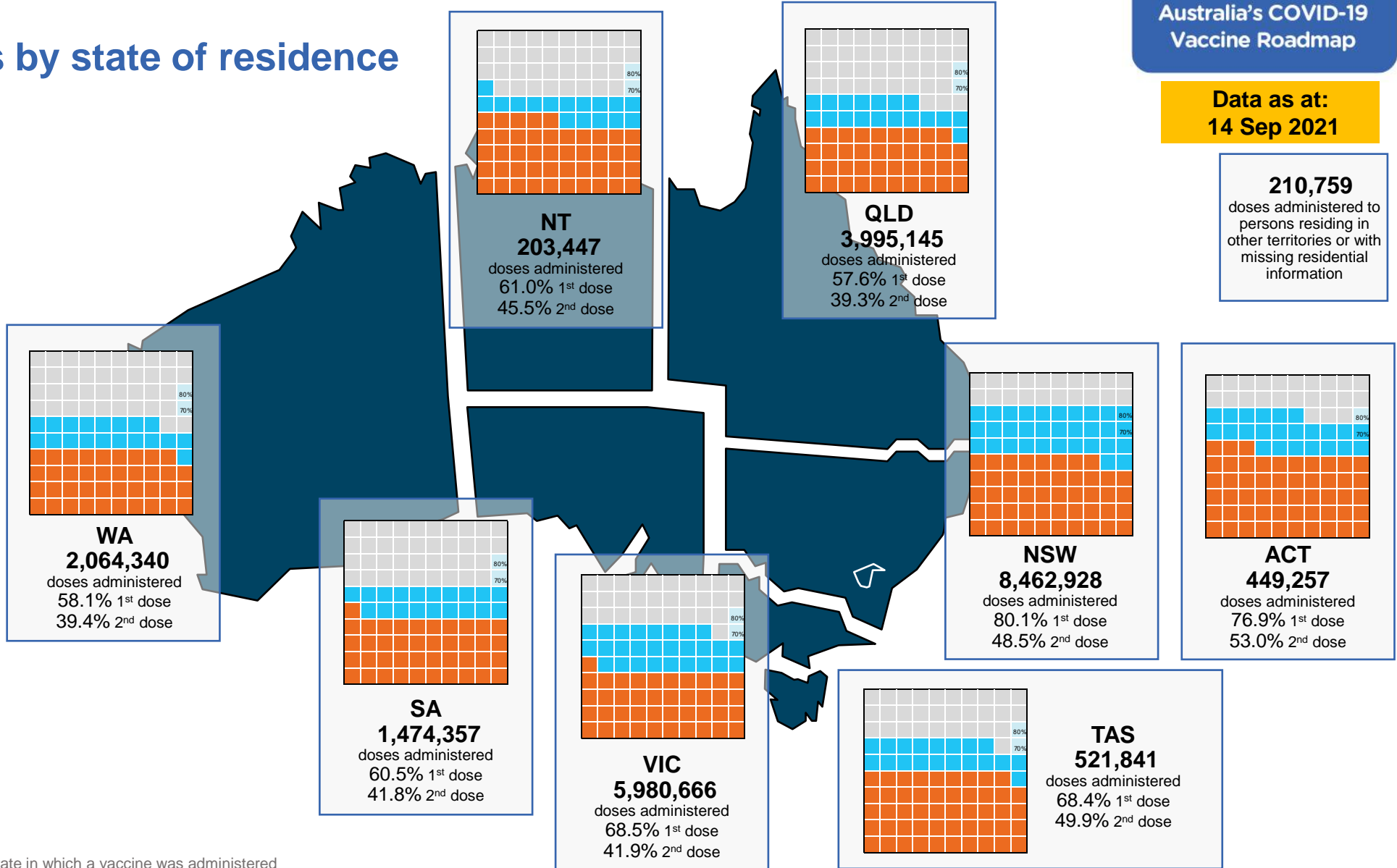
Vaccinations by state of residence

First doses

Age	Today	4 weeks ago	8 weeks ago
16+	69.1%	50.2%	36.9%
50+	84.6%	73.8%	61.7%
70+	91.4%	84.8%	77.6%

Fully vaccinated

Age	Today	4 weeks ago	8 weeks ago
16+	43.9%	28.2%	15.1%
50+	63.1%	41.0%	20.1%
70+	71.9%	55.0%	34.0%



*Residential state may differ from the state in which a vaccine was administered

Commonwealth and Jurisdiction vaccine doses administered

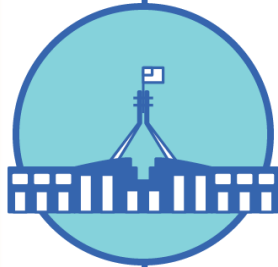
Data as at:
14 Sep 2021



23,362,740 total vaccine doses administered nationally as at 14 September
+ 283,991 recorded in the last 24 hours



9,914,782 doses administered by state and territory facilities
+ 112,728 recorded in the last 24 hours



13,447,958 doses administered by commonwealth facilities
+ 171,263 recorded in the last 24 hours

12,570,236 total vaccine doses administered in primary care settings
877,722 total vaccine doses administered in aged care and disability settings

NSW	Jurisdictions	Commonwealth
Cumulative	3,059,121	5,338,096
Daily increase	29,327	74,150

VIC	Jurisdictions	Commonwealth
Cumulative	2,897,361	3,131,725
Daily increase	36,182	40,816

QLD	Jurisdictions	Commonwealth
Cumulative	1,610,904	2,451,789
Daily increase	18,011	27,138

WA	Jurisdictions	Commonwealth
Cumulative	1,002,558	1,080,203
Daily increase	11,562	11,159

TAS	Jurisdictions	Commonwealth
Cumulative	282,045	238,397
Daily increase	3,762	2,869

SA	Jurisdictions	Commonwealth
Cumulative	657,907	815,016
Daily increase	8,403	8,112

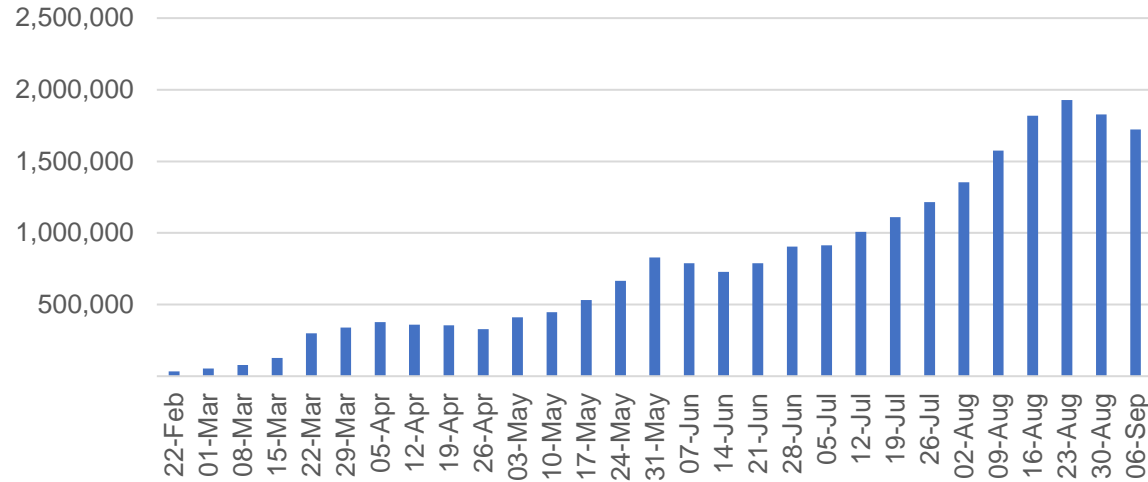
ACT	Jurisdictions	Commonwealth
Cumulative	261,080	296,728
Daily increase	4,392	6,202

NT	Jurisdictions	Commonwealth
Cumulative	143,806	96,004
Daily increase	1,089	817

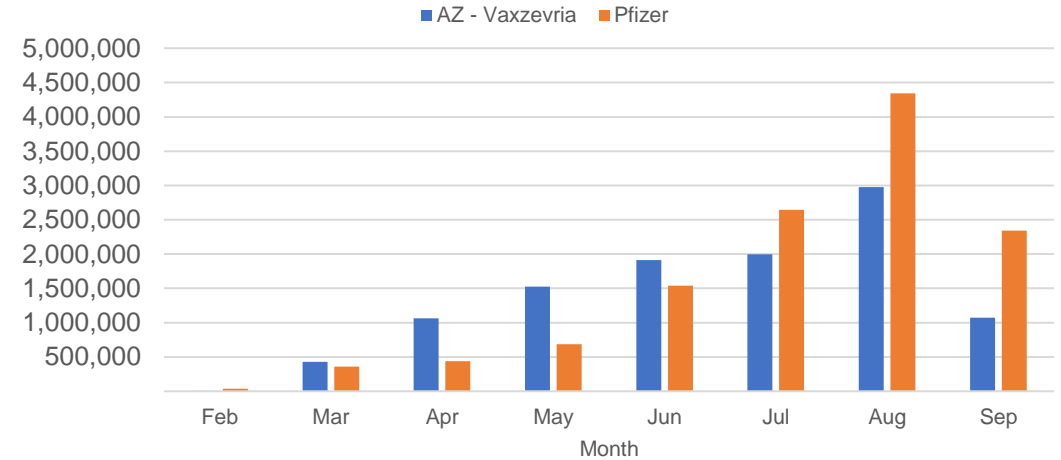
Vaccine milestone charts

Data as at: 14 Sep 2021

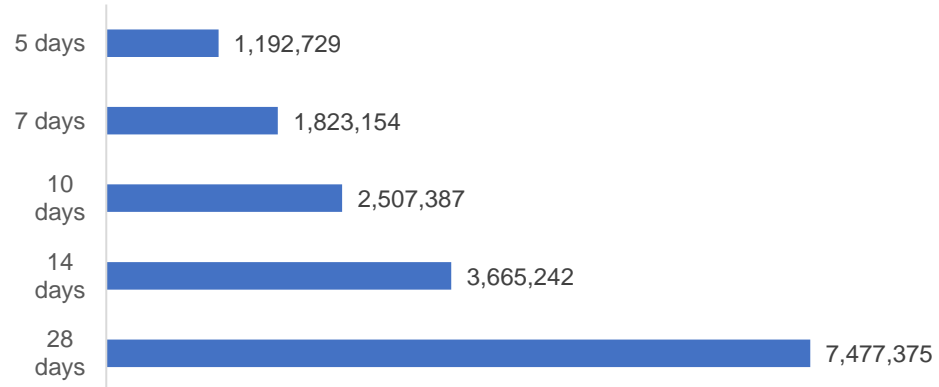
Jabs in arms by week



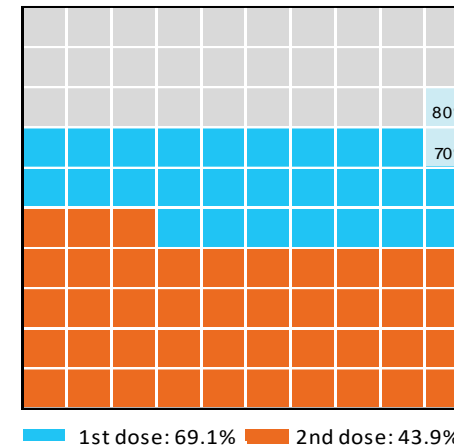
Doses by administration month and vaccine type



Doses reported



Eligible population percentage coverage



*Each square represents 1% of the national population. Squares are filled as milestones are achieved.

*Sourced from the Australian Immunisation Register.

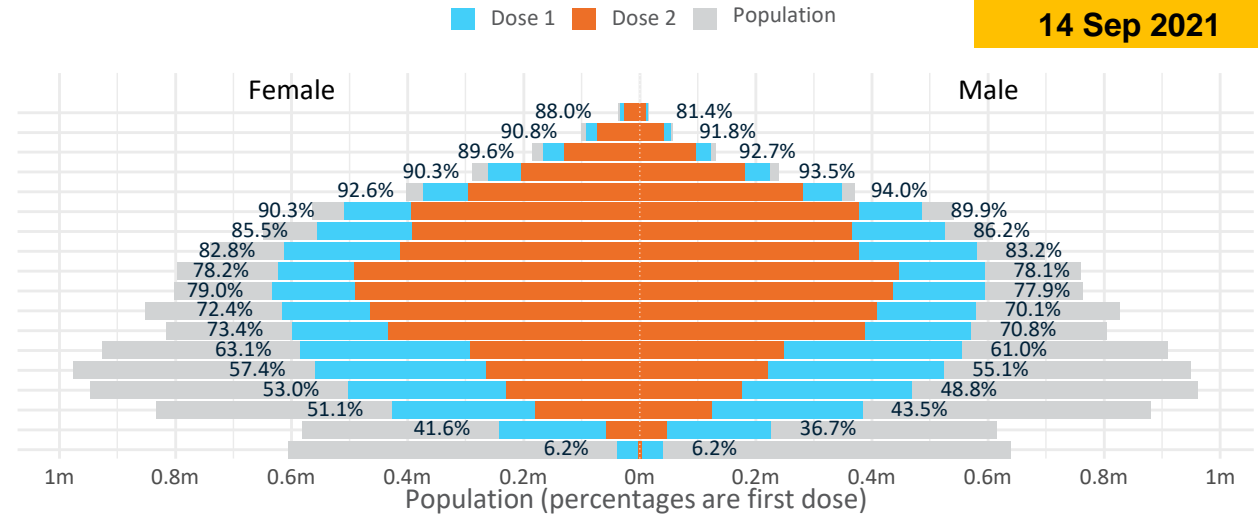
Doses by age and sex

First and second doses by age and sex, using ABS age brackets

Data as at: 14 Sep 2021

AUS	16+	50+	70+	12-15
Dose 1	69.15% (14,258,694 doses / 20,619,959 people)	84.61% (7,402,990 doses / 8,749,703 people)	91.39% (2,681,969 doses / 2,934,706 people)	6.23% (77,527 doses / 1,243,990 people)
Dose 2	43.94% (9,060,432 doses / 20,619,959 people)	63.10% (5,521,285 doses / 8,749,703 people)	71.92% (2,110,615 doses / 2,934,706 people)	0.47% (5,818 doses / 1,243,990 people)

Age	Dose 1	Dose 2
95+	45,620 (86.2%)	36,586 (69.1%)
90-94	144,561 (91.2%)	114,850 (72.5%)
85-89	287,574 (90.9%)	226,123 (71.5%)
80-84	485,062 (91.8%)	385,114 (72.9%)
75-79	722,405 (93.4%)	575,434 (74.4%)
70-74	996,747 (90.2%)	772,508 (69.9%)
65-69	1,081,567 (86.0%)	757,003 (60.2%)
60-64	1,193,773 (83.1%)	789,144 (54.9%)
55-59	1,217,384 (78.3%)	938,299 (60.3%)
50-54	1,228,297 (78.5%)	926,224 (59.2%)
45-49	1,195,779 (71.3%)	872,344 (52.0%)
40-44	1,170,318 (72.2%)	820,029 (50.6%)
35-39	1,141,670 (62.2%)	540,787 (29.5%)
30-34	1,088,527 (56.6%)	487,689 (25.4%)
25-29	977,963 (51.3%)	408,321 (21.4%)
20-24	813,435 (47.5%)	304,774 (17.8%)
16-19	468,012 (39.1%)	105,203 (8.8%)
12-15	77,527 (6.2%)	5,818 (0.5%)



	AUS	ACT	NSW	NT	QLD	SA	TAS	VIC	WA
16 and over - dose 1	14,258,694	264,553	5,257,327	116,261	2,370,188	870,739	301,117	3,703,888	1,229,295
16 and over - dose 2	9,060,432	182,220	3,186,444	86,692	1,618,252	601,864	219,443	2,268,094	832,301
16 and over - population	20,619,959*	344,037	6,565,651	190,571	4,112,707	1,440,400	440,172	5,407,574	2,114,978
16 and over % with dose 1	69.15%	76.90%	80.07%	61.01%	57.63%	60.45%	68.41%	68.49%	58.12%
16 and over % with dose 2	43.94%	52.97%	48.53%	45.49%	39.35%	41.78%	49.85%	41.94%	39.35%
50 and over - dose 1	7,402,990	124,352	2,524,418	45,872	1,382,009	533,399	184,213	1,875,769	687,310
50 and over - dose 2	5,521,285	100,460	1,847,221	35,652	1,019,905	386,840	144,721	1,442,766	515,283
50 and over - population	8,749,703	127,802	2,807,793	62,280	1,758,855	674,384	220,036	2,211,211	885,370
50 and over % with dose 1	84.61%	>95%	89.91%	73.65%	78.57%	79.09%	83.72%	84.83%	77.63%
50 and over % with dose 2	63.10%	78.61%	65.79%	57.24%	57.99%	57.36%	65.77%	65.25%	58.20%
70 and over - dose 1	2,681,969	41,165	906,994	9,947	511,905	211,326	70,581	668,211	242,542
70 and over - dose 2	2,110,615	34,234	709,739	7,868	402,565	158,679	57,266	535,864	190,461
70 and over - population	2,934,706	39,946	962,606	12,343	577,767	240,514	77,155	743,519	280,281
70 and over % with dose 1	91.39%	>95%	94.22%	80.59%	88.60%	87.86%	91.48%	89.87%	86.54%
70 and over % with dose 2	71.92%	85.70%	73.73%	63.74%	69.68%	65.97%	74.22%	72.07%	67.95%
12 to 15 - dose 1	77,527	1,044	37,976	2,466	11,352	1,464	1,104	18,772	2,774
12 to 15 - dose 2	5,818	185	2,626	166	1,554	105	77	828	229
12 to 15 - population	1,243,990	19,693	390,330	13,060	270,146	82,747	26,308	308,611	132,869
12 to 15 % with dose 1	6.23%	5.30%	9.73%	18.88%	4.20%	1.77%	4.20%	6.08%	2.09%
12 to 15 % with dose 2	0.47%	0.94%	0.67%	1.27%	0.58%	0.13%	0.29%	0.27%	0.17%

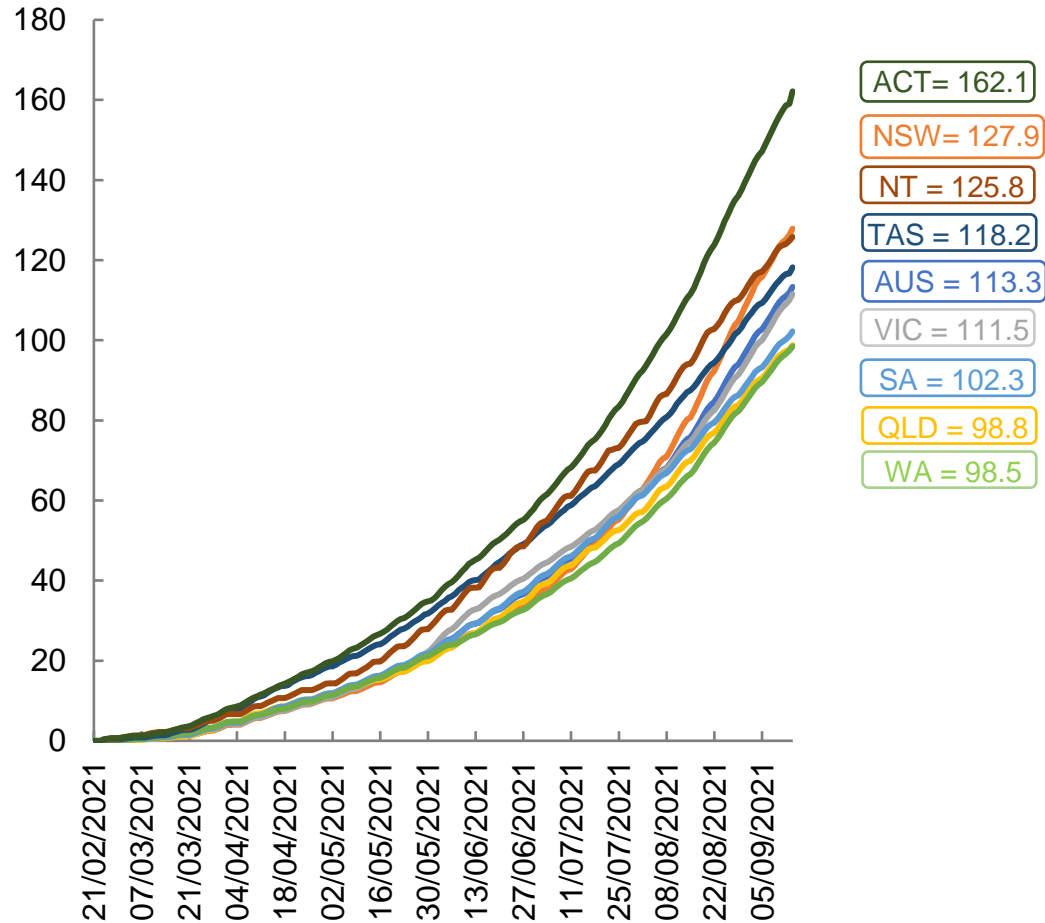
* National population will not equal sum of listed jurisdictions due to a small number of people counted in national population residing in some 'other' territories. Sum of state doses will not add to national total as some records are unable to be geocoded to a State or Territory. Doses sourced from Australian Immunisation Register, population from ABS ERP June 2020

Vaccinations by location

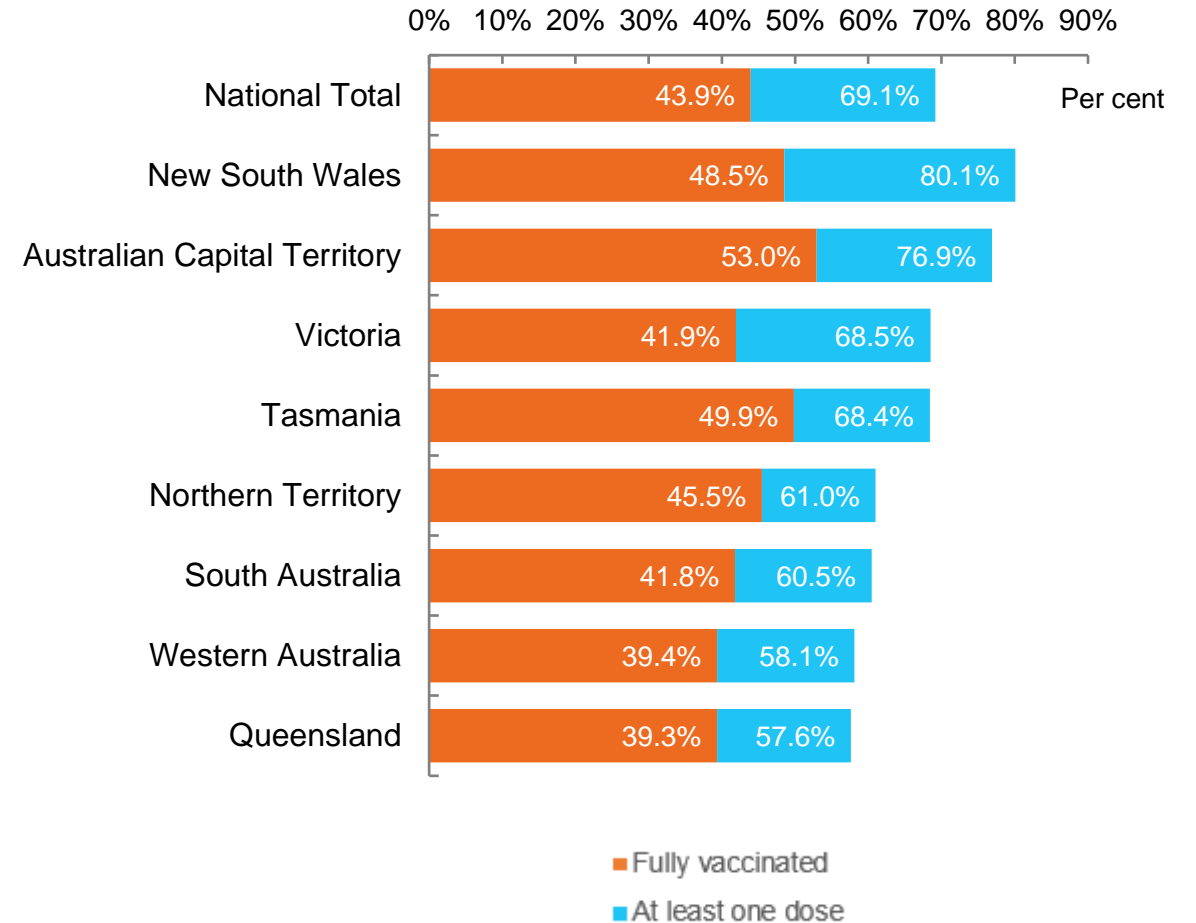
Data as at:
14 Sep 2021

Australia's COVID-19
Vaccine Roadmap

Cumulative total doses administered vs state populations*



First and Second Doses by state of residence



*Not an indication of percentage vaccinated, numbers will exceed 100 due to multiple doses required per person of the population

Aboriginal and Torres Strait Islander peoples

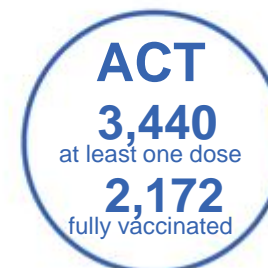
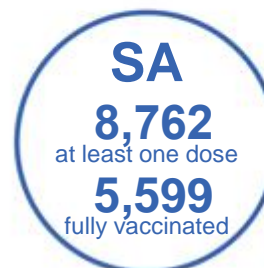
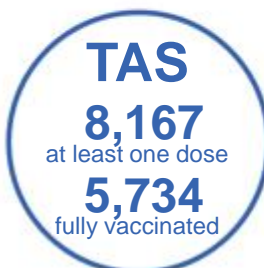
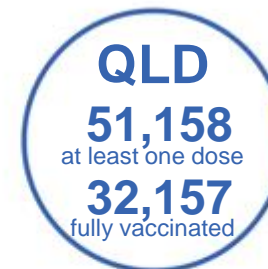
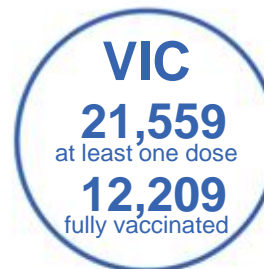
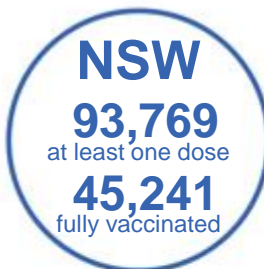
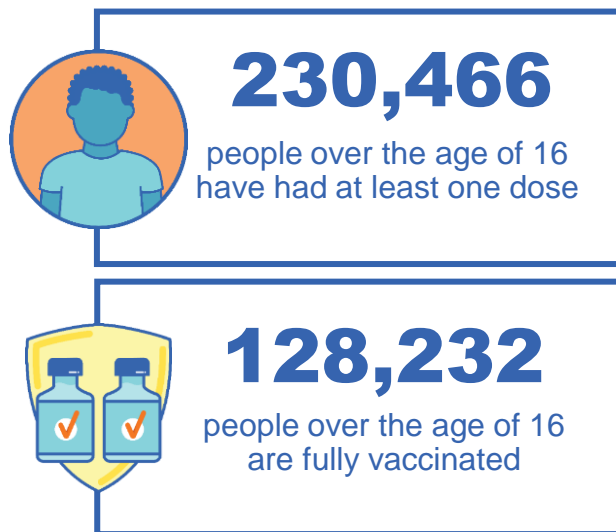
Number of people vaccinated

Data as at:
12 Sep 2021
Updated weekly

Australia's COVID-19
Vaccine Roadmap

166 Aboriginal community controlled health services (ACCHS)

0#	48	26	39	11	3	21	18
ACT	NSW	NT	QLD	SA	TAS	VIC	WA



6,321 people with at least one dose
3,052 people fully vaccinated

residing in other territories or with missing residential information

Source: Australian Immunisation Register

*Identifying as Aboriginal and Torres Strait Islander is optional and the estimated population may be under reported.

**Includes all Aboriginal and Torres Strait Islander peoples who have received a vaccination, not limited to those administered in an ACCHS setting

***Updated weekly.

****. Data corrections identified for Victoria have resulted in adjustments to the number of persons identifying as Aboriginal and Torres Strait Island

#ACCHS in the ACT are currently operating as a Commonwealth Vaccine Clinics so not included to avoid double counting

Data as at:
14 Sep 2021

Commonwealth primary care



Primary care vaccine administration sites

5,421	137	166	3,147
GPs	CVCs	ACCHS	Pharmacies



12,570,236 total vaccine doses administered primary care settings as at 14 September
+ **163,760** recorded in the last 24 hours

Primary care vaccinations by provider type

	Doses administered	Daily increase	7 day increase
General Practice* includes other Commonwealth	12,047,800	148,848	842,560
Pharmacy	522,436	14,912	96,634

NSW
4,951,981
(+72,475 daily increase)

VIC
2,966,715
(+39,058 daily increase)

QLD
2,278,697
(+24,367 daily increase)

WA
1,021,779
(+11,219 daily increase)

TAS
226,854
(+2,876 daily increase)

SA
764,074
(+7,942 daily increase)

ACT
213,565
(+3,289 daily increase)

NT
80,693
(+957 daily increase)

65,878 doses administered to persons residing in other territories or with missing residential information

*General practice includes Commonwealth Vaccination Clinics, Aboriginal Community Health Centres, Royal Flying Doctor Service and other Commonwealth vaccination facilities

Source: Australian Immunisation Register

Data as at:
14 Sep 2021

Commonwealth aged care and disability doses administered



877,722 (+ 7,503 last 24 hours)

Total vaccine doses administered in aged care and disability facilities as at 14 September

Number of doses administered as part of the Commonwealth aged and disability care rollout

NSW
403,516
(+3,132 daily increase)

VIC
167,291
(+940 daily increase)

QLD
139,310
(+2,704 daily increase)

WA
59,491
(+214 daily increase)

TAS
16,138
(+70 daily increase)

SA
53,726
(+218 daily increase)

ACT
10,448
(+28 daily increase)

NT
5,397
(+11 daily increase)

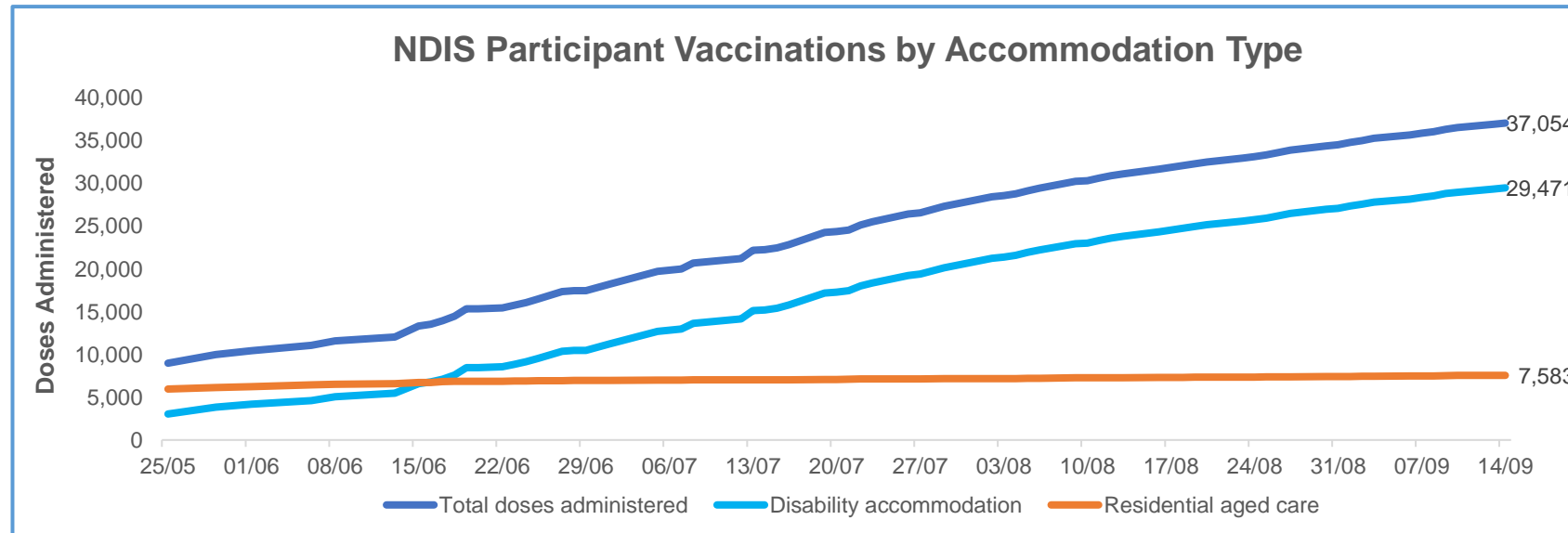
*Sourced from the Australian Immunisation Register. Includes all persons vaccinated at participating residential aged care, disability and related industry settings.
**State level breakdown indicates the residential location and may not align to the state in which the vaccination occurred.

22,405 doses administered to persons residing in other territories or with missing residential information

Data as at:
14 September 2021*

Vaccination rate of people with disability and the disability workforce

Phase 1a – People with disability living in shared accommodation



	Total people with at least one dose	People fully vaccinated	Total number of individuals in cohort	Total doses administered	% People with at least one dose	% People fully vaccinated
NDIS participants living in shared accommodation **	19,907	17,147	27,293	37,054	72.9%	62.8%
NDIS screened workers ***	130,717	97,623	189,644	228,340	68.9%	51.5%

* Updates are available Monday to Friday on participants, and bi-weekly for workers, numbers may be up to four days old.

** Shared accommodation means two or more people with disability living in shared residential accommodation and NDIS participants living in Residential Aged Care accommodation as per the eligibility criteria of Phase 1a.

*** Total number of workers within the NDIS Commission Worker Screening database who have ever been successfully screened and linked to an NDIS registered provider or participant.

Source: Linkage between National Disability Insurance Agency data, NDIS Quality and Safeguards Commission data and the Australian Immunisation Register.

Residential aged care vaccination rollout

Residential aged care facilities status

100% Commonwealth facilities visited (2,569 planned sites)

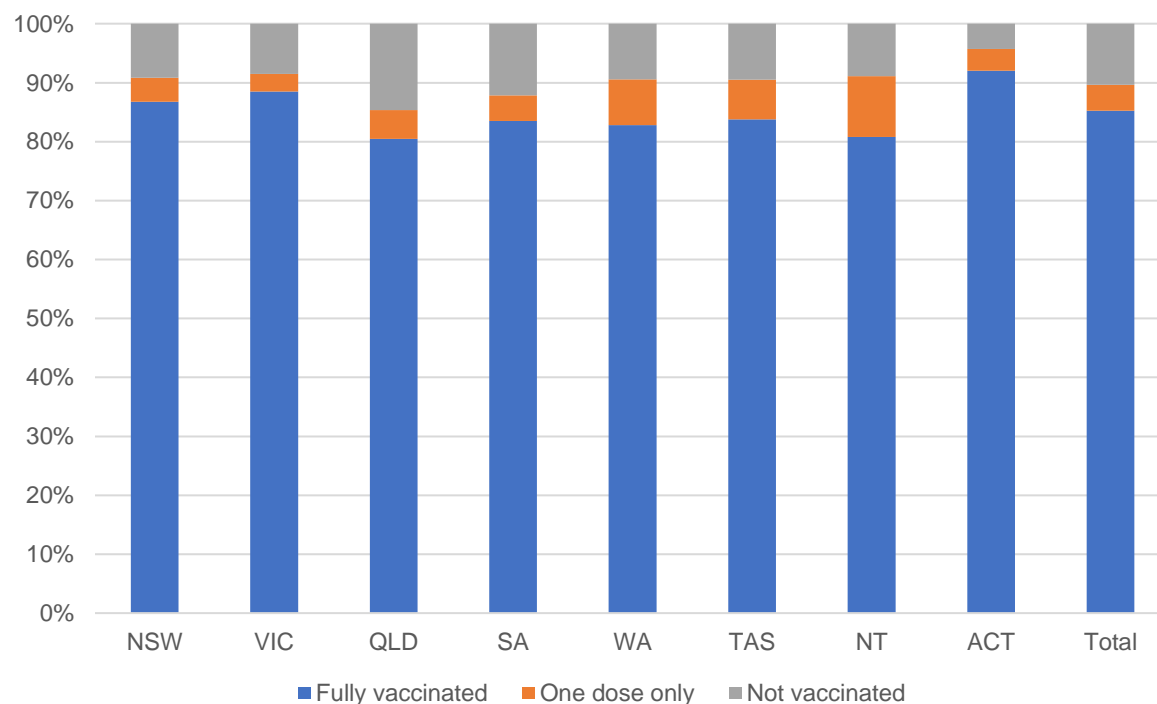
158,838 People fully vaccinated

89.6% Participation rate

Australia's COVID-19 Vaccine Roadmap

Data as at:
14 September 2021*

Aged care resident vaccinations



Aged care worker vaccinations

Jurisdictions	Total workers with at least one dose	Workers fully vaccinated	% Workers with at least one dose	% Workers fully vaccinated
NSW	77,297	63,316	95.6%	78.3%
VIC	68,995	56,626	94.7%	77.7%
QLD	45,679	34,271	93.0%	69.7%
SA	25,420	20,538	94.1%	76.0%
WA	22,302	15,787	92.6%	65.6%
TAS	7,201	5,944	94.1%	77.7%
NT	828	778	95.6%	89.8%
ACT	2,865	2,431	97.3%	82.6%
Total	250,587	199,691	94.4%	75.2%

Source: My Aged Care Portal staff vaccination progress

**Resident vaccination information is reported manually by service providers

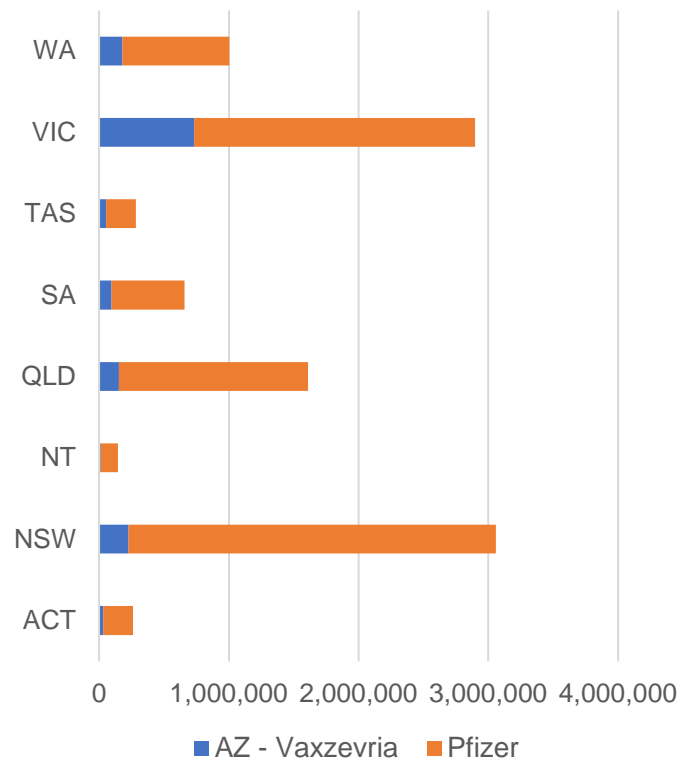
*Status updates are provided by facilities at least once per week. Reporting is updated Monday to Friday to encompass different facility updates being made on different days.

Data is sourced directly from Aged Care Service Providers and is not drawn or closely aligned with data from AIR due to inconsistencies and potential lags in uploading of records.

Data as at:
14 Sep 2021

Jurisdiction administered

Total vaccine doses administered in State and Territory clinics as at 14 September



9,914,782 total vaccine doses administered in State and Territory clinics as at 14 September
 + **112,728** recorded in the last 24 hours
 + **819,363** recorded in the last 7 days

NSW
3,059,121
 (+29,327 daily increase)

VIC
2,897,361
 (+36,182 daily increase)

QLD
1,610,904
 (+18,011 daily increase)

WA
1,002,558
 (+11,562 daily increase)

TAS
282,045
 (+3,762 daily increase)

SA
657,907
 (+8,403 daily increase)

ACT
261,080
 (+4,392 daily increase)

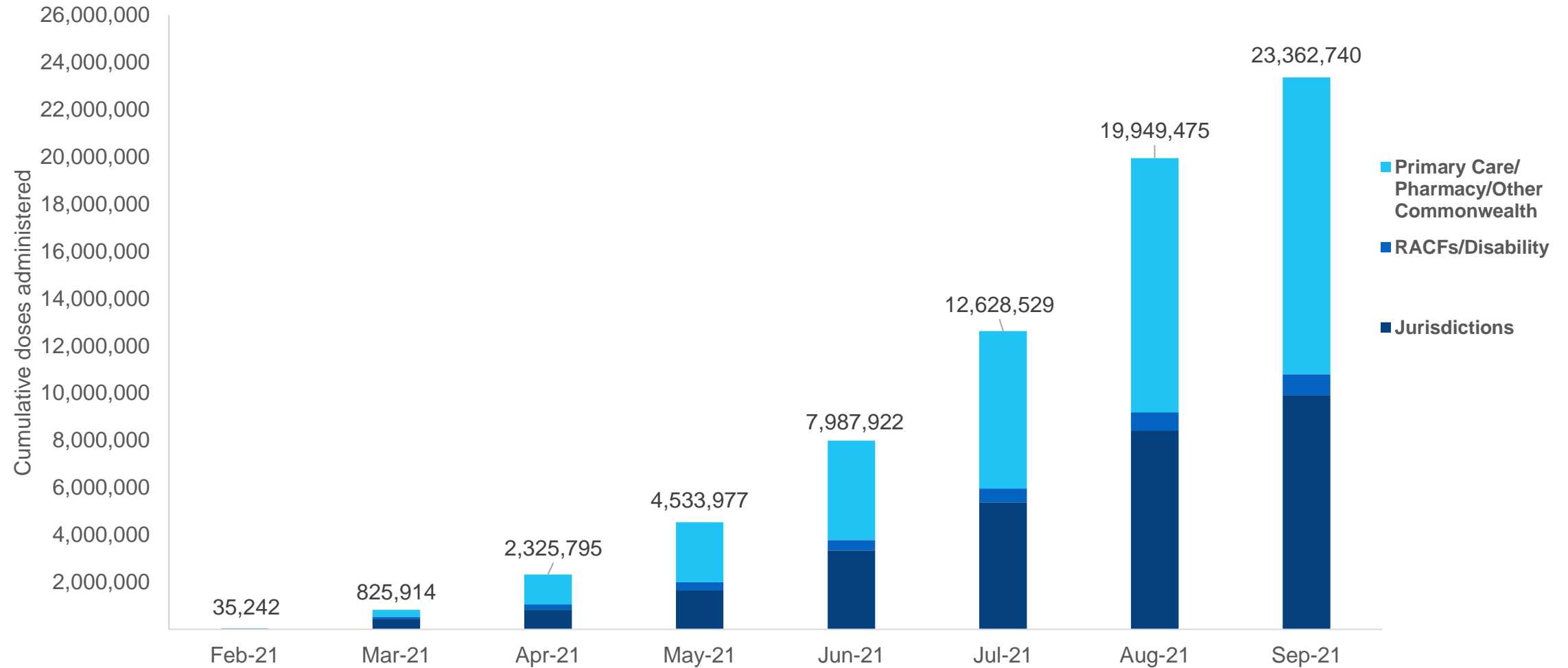
NT
143,806
 (+1,089 daily increase)

*Sourced from the Australian Immunisation Register and self-reported data. Numbers are calculated as difference in daily cumulative reported numbers to allow for historical corrections in all self-reported data sources.

Source: Australian Immunisation Register

Cumulative doses administered by channel

Data as at:
14 Sep 2021



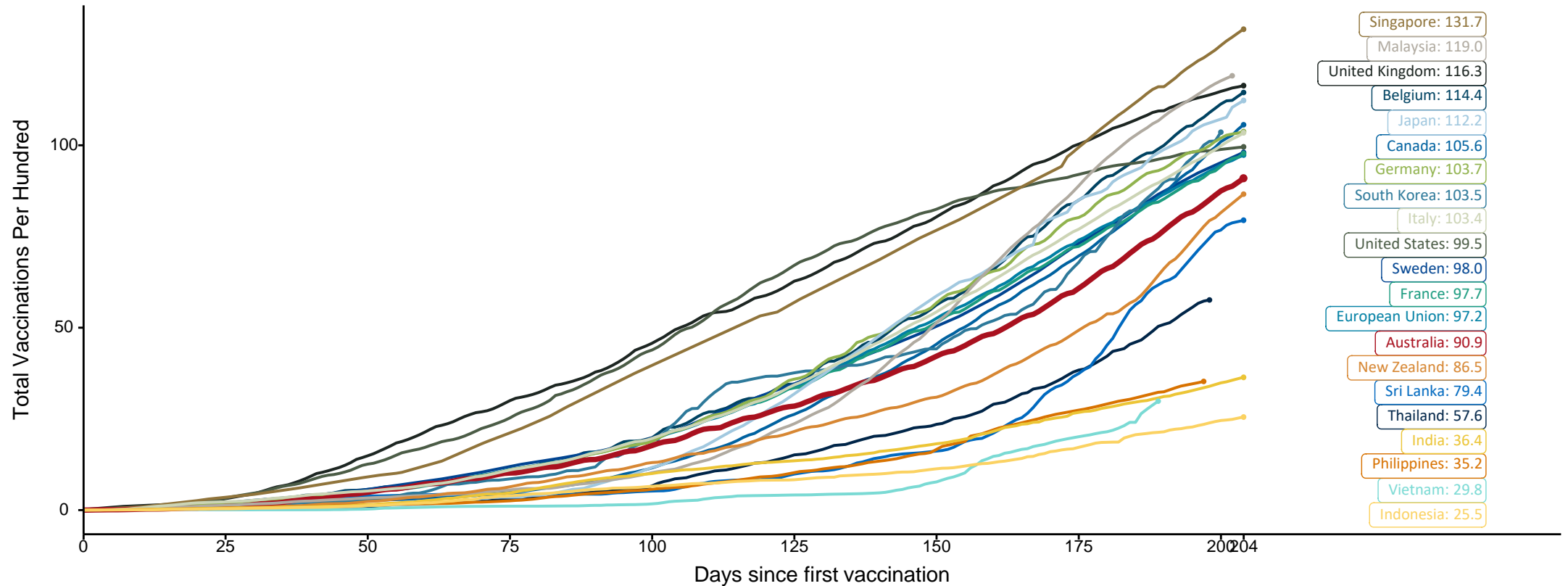
Source: Australian Immunisation Register

Doses at equivalent stages of rollout (Day 204)

Data as at:
14 Sep 2021

The x-axis is truncated at the length of Australia's vaccination program. Countries with intermittent reporting have had their doses per 100 imputed to Australia's current stage of rollout. Israel excluded as it is beyond scale of the graph

Cumulative doses administered (14 Sep): **23,362,740**

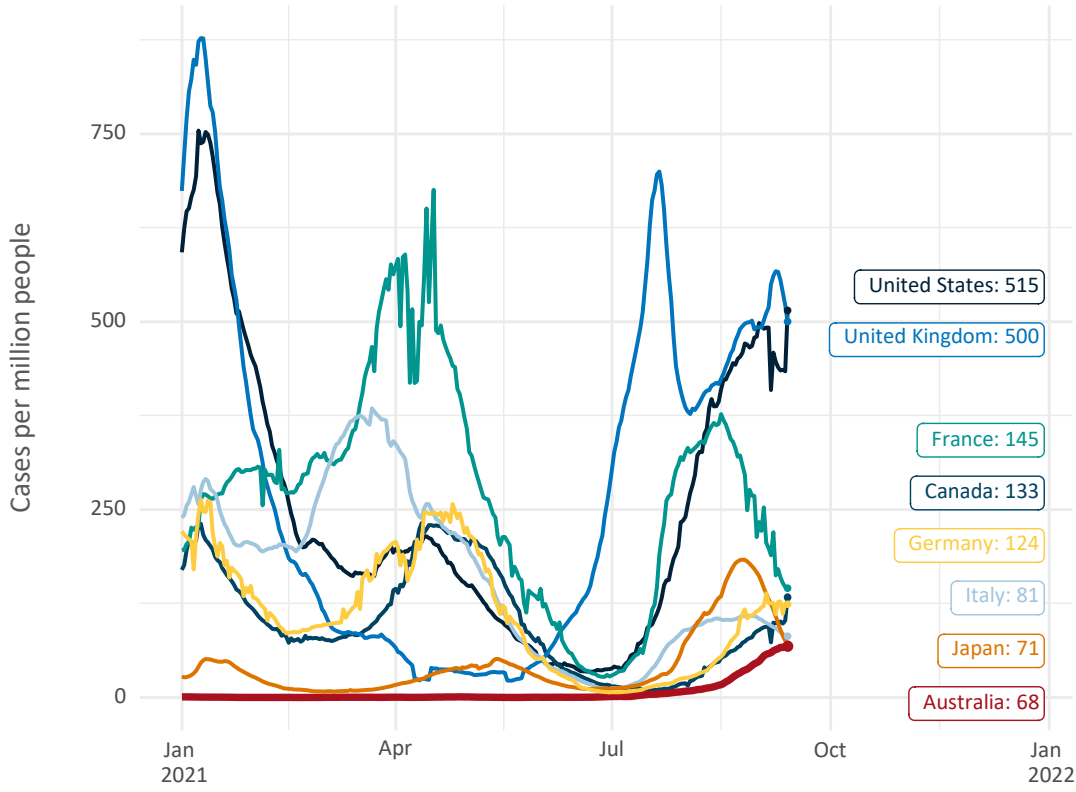


Source: Department of Health (Australia), Our World in Data (international)
Latest data: 14 September

Data as at: 14 Sep 2021

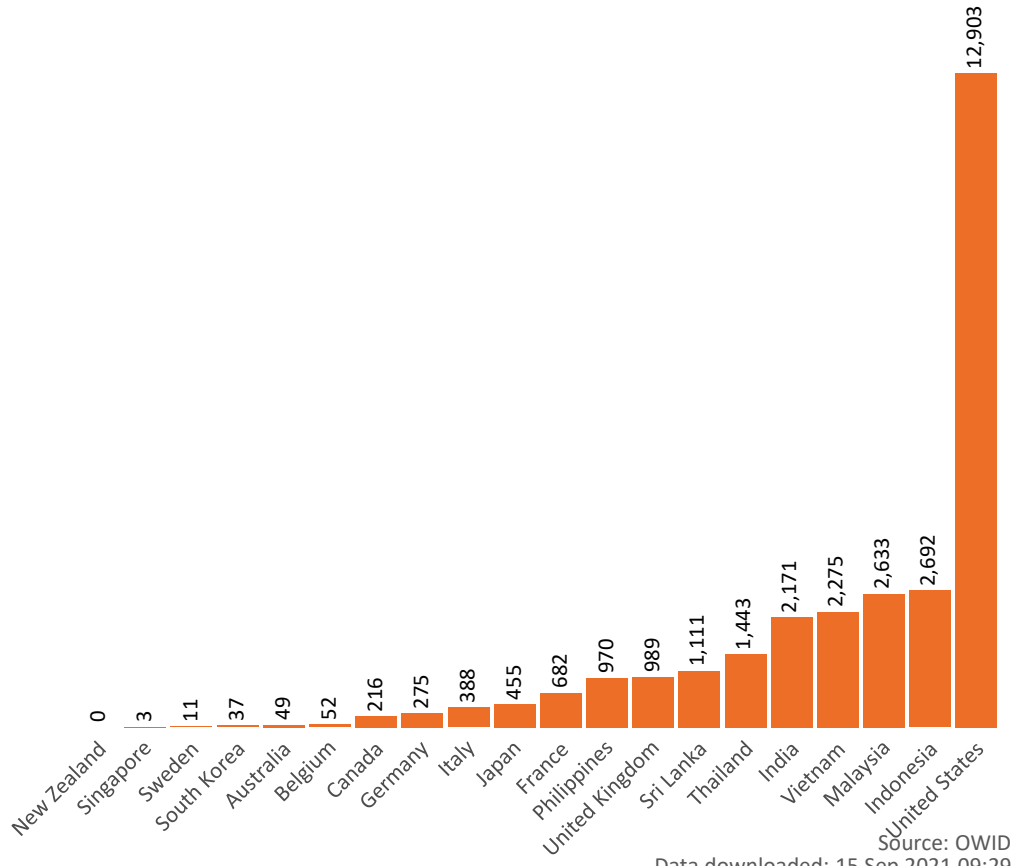
International data – COVID-19

New daily cases per million in 2021, Australia and G7 countries
Smoothed - 7 day average



Source: OWID
Data downloaded: 15 Sep 2021 09:29
Latest data: 13 Sep 2021


COVID-19 deaths in past 7 days - Australia and select countries



Source: OWID
Data downloaded: 15 Sep 2021 09:29
Latest data: 13 Sep 2021

Data as at midnight:
14 Sep 2021

Pandemic Response Payments



2.04 million
People have received at least one COVID Disaster Payment (including ISP200)

\$7.26 billion
Paid Out as at 14 Sep 2021


3.40 million
Claims granted across three different payments



93%
of Claims Received Digitally



COVID Disaster Payment:	3.36 million claims received - 1.88 million individuals paid a total of \$7.04 billion.
\$200 Income Support Payment:	199,000 claims received - 156,000 individuals paid a total of \$136.48 million.
Pandemic Leave Disaster Payment:	60,000 claims received - 52,000 individuals paid a total of \$81.62 million.



THREE PAYMENTS AVAILABLE

COVID Disaster Payment
assisting during a lockdown event in a Commonwealth hotspot.

Income Support Payment \$200
for income support recipients who lost at least 8 hours of work.

Pandemic Leave Disaster Payment
for those who have to self-isolate, quarantine or care.

For more information visit:
servicesaustralia.gov.au

COVID-19 DISASTER PAYMENTS

New South Wales
Active lockdown since 24 Jun

1.03m people have received at least one COVID Disaster Payment.

\$4.92b paid out as at 14 Sep 2021.

\$647m paid in initial and reoccurring payments in the week ending 12 Sep 2021.

Cumulative payments made by State since activation on 1 Jul 2021.

Date	Cumulative Payments
22 Aug	\$2.94b
29 Aug	\$3.60b
5 Sep	\$4.24b
12 Sep	\$4.89b
14 Sep	\$4.92b

Victoria
Active lockdown (#6) since 6 Aug

509,000 people have received at least one COVID Disaster Payment.

\$1.67b paid out as at 14 Sep 2021.

\$346m paid in initial and reoccurring payments in the week ending 12 Sep 2021.

Cumulative payments made by State since activation on 8 Jun 2021.

Date	Cumulative Payments
22 Aug	\$667.7m
29 Aug	\$962.0m
5 Sep	\$1,300.8m
12 Sep	\$1.65b
14 Sep	\$1.67b

Australian Capital Territory
Active lockdown since 12 Aug

59,000 people have received at least one COVID Disaster Payment.

\$148.5m paid out as at 14 Sep 2021.

\$41m paid in initial and reoccurring payments in the week ending 12 Sep 2021.

Cumulative payments made by State since activation on 20 Aug 2021.

Date	Cumulative Payments
22 Aug	\$22.3m
29 Aug	\$63.4m
5 Sep	\$105.4m
12 Sep	\$146.5m
14 Sep	\$148.5m

Northern Territory
Lockdown from 18 – 20 Jul
Claiming period ends 13 Sep

5,724 people have received at least one COVID Disaster Payment.

\$3.71m paid out as at 14 Sep 2021.

\$533,000 paid in initial and reoccurring payments in the week ending 12 Sep 2021.

Cumulative payments made by State since activation on 25 Aug 2021.

Date	Cumulative Payments
29 Aug	\$1.90m
5 Sep	\$3.05m
12 Sep	\$3.58m
14 Sep	\$3.71m

Queensland
Lockdown from 31 Jul – 11 Aug
Claiming period ended 28 Aug

196,000 people have received at least one COVID Disaster Payment.

\$252.4m paid out as at 14 Sep 2021.

\$194,000 paid in initial and reoccurring payments in the week ending 12 Sep 2021.

Cumulative payments made by State since activation on 7 Aug 2021.

Date	Cumulative Payments
22 Aug	\$235.8m
29 Aug	\$248.1m
5 Sep	\$252.1m
12 Sep	\$252.3m
14 Sep	\$252.4m

South Australia
Lockdown from 21 – 27 Jul
Claiming period ended 17 Aug

86,000 people have received at least one COVID Disaster Payment.

\$48.2m paid out as at 14 Sep 2021.

\$18,000 paid in initial and reoccurring payments in the week ending 12 Sep 2021.

Cumulative payments made by State since activation on 28 Jul 2021.

Date	Cumulative Payments
22 Aug	\$48.2m
29 Aug	\$48.2m
5 Sep	\$48.2m
12 Sep	\$48.2m
14 Sep	\$48.2m