



Australian Government
Operation COVID Shield

COVID-19 Vaccine Roll-out

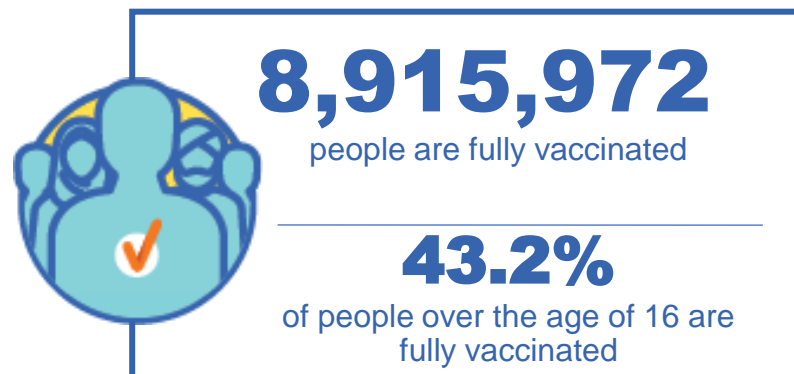
14 September 2021

Data as at:
13 Sep 2021

Total vaccine doses



23,078,749 total vaccine
doses administered nationally as at 13 September
+276,176 recorded in the last 24 hours



*Administration state breakdown indicates state in which a vaccine was administered

**Overall dose count includes instances of more than two doses per person in a small number of cases.

Source: Australian Immunisation Register

Data as at:
13 Sep 2021

205,687

doses administered to
persons residing in
other territories or with
missing residential
information

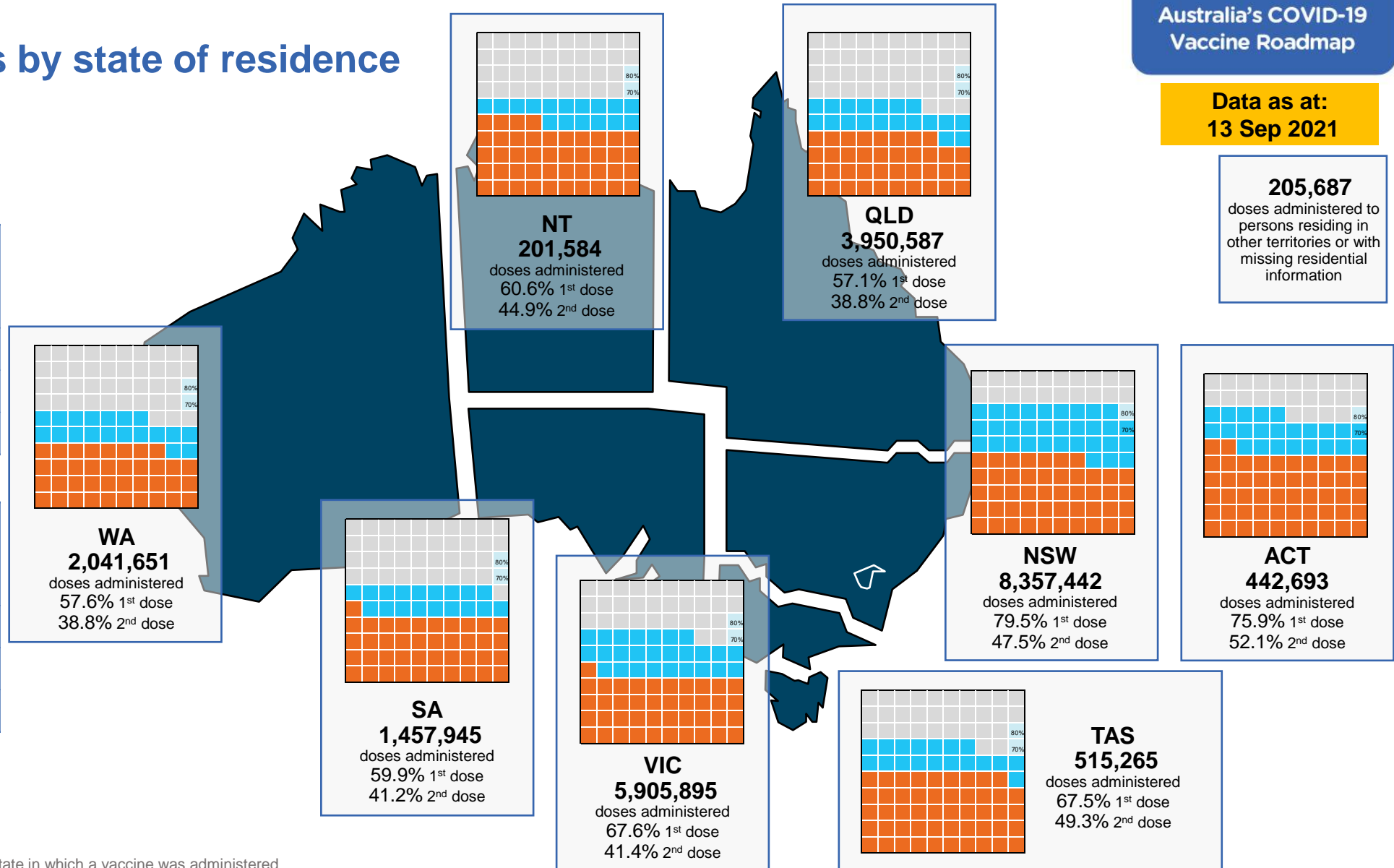
Vaccinations by state of residence

First doses

Age	Today	4 weeks ago	8 weeks ago
16+	68.5%	49.4%	36.4%
50+	84.2%	73.2%	61.1%
70+	91.1%	84.5%	77.2%

Fully vaccinated

Age	Today	4 weeks ago	8 weeks ago
16+	43.2%	27.5%	14.6%
50+	62.4%	39.9%	19.3%
70+	71.3%	54.1%	32.8%



*Residential state may differ from the state in which a vaccine was administered

Commonwealth and Jurisdiction vaccine doses administered

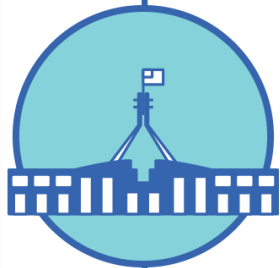
Data as at:
13 Sep 2021



23,078,749 total vaccine
doses administered nationally as at 13 September
+ 276,176 recorded in the last 24 hours



9,802,054
doses administered by state
and territory facilities
+ 102,602
recorded in the last 24 hours



13,276,695
doses administered by
commonwealth facilities
+ 173,574
recorded in the last 24 hours

12,406,476 total vaccine doses
administered in primary care settings
870,219 total vaccine doses
administered in aged care and disability
settings

NSW	Jurisdictions	Commonwealth
Cumulative	3,029,794	5,263,946
Daily increase	29,933	85,819

VIC	Jurisdictions	Commonwealth
Cumulative	2,861,179	3,090,909
Daily increase	32,845	38,168

QLD	Jurisdictions	Commonwealth
Cumulative	1,592,893	2,424,651
Daily increase	11,506	25,528

WA	Jurisdictions	Commonwealth
Cumulative	990,996	1,069,044
Daily increase	10,156	10,468

TAS	Jurisdictions	Commonwealth
Cumulative	278,283	235,528
Daily increase	5,278	1,879

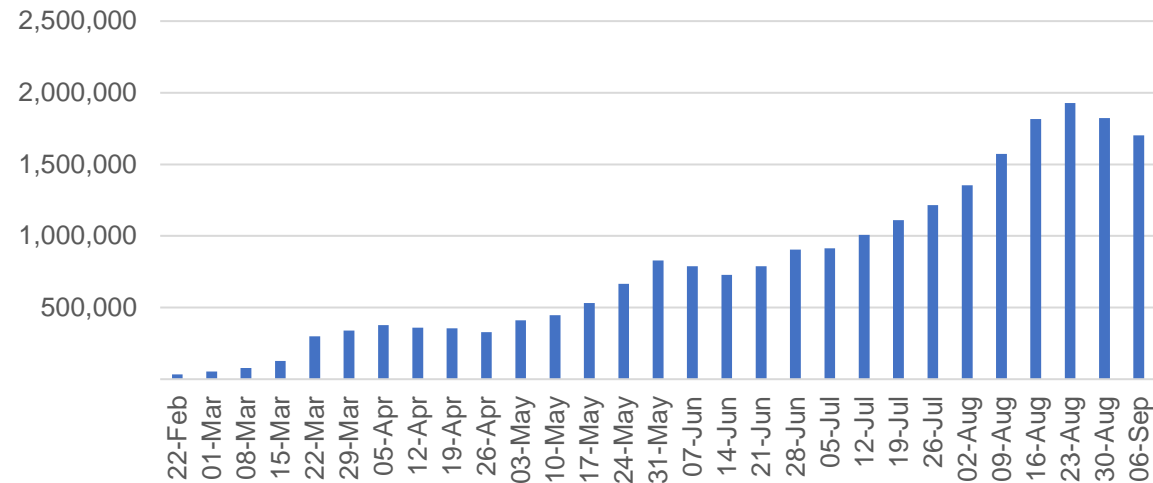
SA	Jurisdictions	Commonwealth
Cumulative	649,504	806,904
Daily increase	8,386	8,157

ACT	Jurisdictions	Commonwealth
Cumulative	256,688	290,526
Daily increase	3,285	2,658

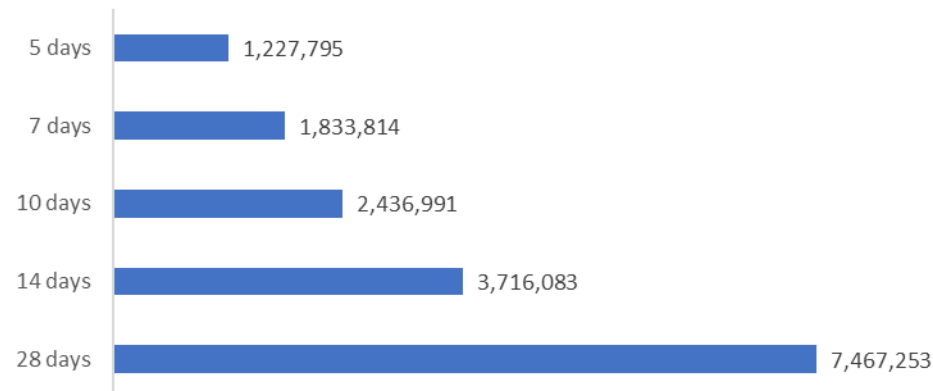
NT	Jurisdictions	Commonwealth
Cumulative	142,717	95,187
Daily increase	1,213	897

Vaccine milestone charts

Jabs in arms by week



Doses reported

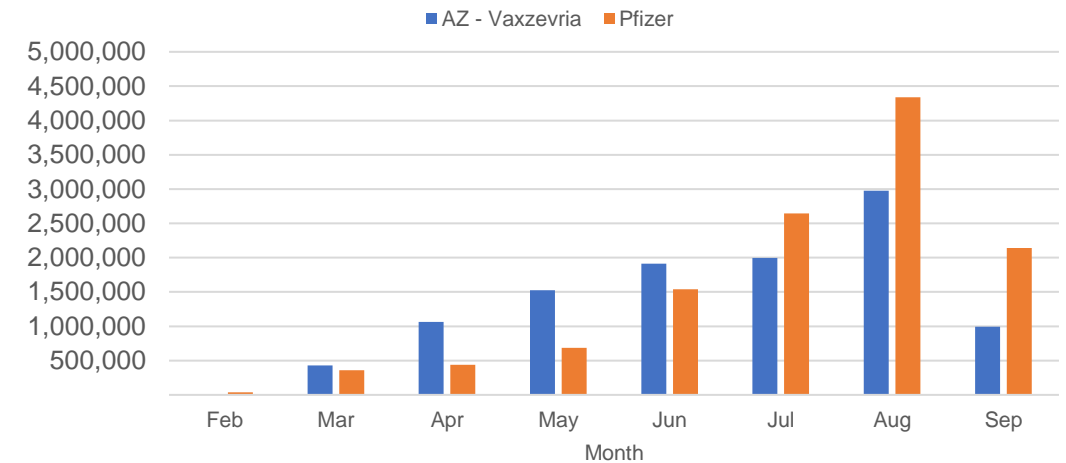


*Sourced from the Australian Immunisation Register.

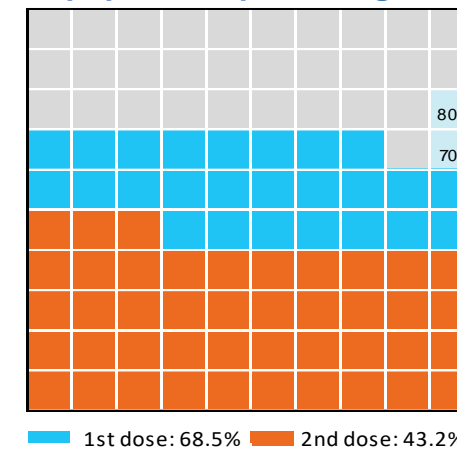
Data as at:
13 Sep 2021

Australia's COVID-19
Vaccine Roadmap

Doses by administration month and vaccine type



Eligible population percentage coverage



*Each square represents 1% of the national population. Squares are filled as milestones are achieved.

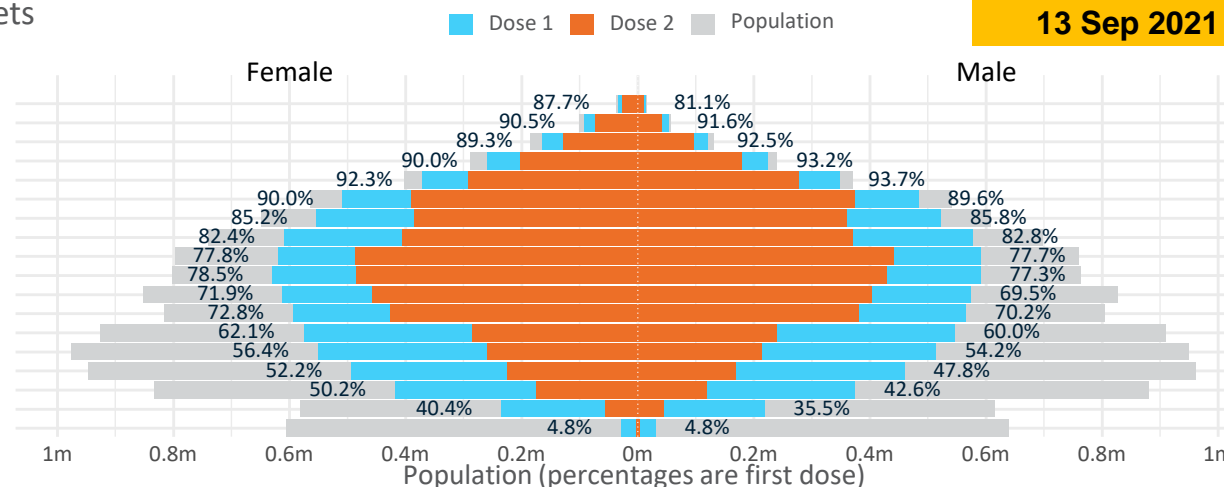
Doses by age and sex

Australia's COVID-19
Vaccine Roadmap

Data as at:
13 Sep 2021

First and second doses by age and sex, using ABS age brackets

Age	Dose 1	Dose 2
95+	45,461 (85.9%)	36,322 (68.6%)
90-94	144,140 (91.0%)	113,960 (71.9%)
85-89	286,674 (90.7%)	224,018 (70.8%)
80-84	483,504 (91.5%)	381,613 (72.2%)
75-79	720,088 (93.1%)	570,239 (73.7%)
70-74	993,501 (89.9%)	764,974 (69.2%)
65-69	1,076,907 (85.6%)	745,955 (59.3%)
60-64	1,187,567 (82.7%)	776,819 (54.1%)
55-59	1,210,399 (77.8%)	927,227 (59.6%)
50-54	1,220,215 (78.0%)	914,497 (58.5%)
45-49	1,186,769 (70.8%)	860,787 (51.3%)
40-44	1,160,391 (71.6%)	807,960 (49.9%)
35-39	1,123,691 (61.2%)	525,556 (28.6%)
30-34	1,070,208 (55.6%)	473,607 (24.6%)
25-29	960,414 (50.4%)	396,831 (20.8%)
20-24	796,832 (46.5%)	295,177 (17.2%)
16-19	453,249 (37.9%)	100,430 (8.4%)
12-15	59,651 (4.8%)	5,278 (0.4%)



	AUS	ACT	NSW	NT	QLD	SA	TAS	VIC	WA
16 and over - dose 1	14,120,010	261,019	5,217,373	115,549	2,349,235	862,905	297,163	3,656,615	1,218,426
16 and over - dose 2	8,915,972	179,214	3,121,329	85,552	1,594,773	593,331	216,837	2,240,747	820,536
16 and over - population	20,619,959*	344,037	6,565,651	190,571	4,112,707	1,440,400	440,172	5,407,574	2,114,978
16 and over % with dose 1	68.48%	75.87%	79.46%	60.63%	57.12%	59.91%	67.51%	67.62%	57.61%
16 and over % with dose 2	43.24%	52.09%	47.54%	44.89%	38.78%	41.19%	49.26%	41.44%	38.80%
50 and over - dose 1	7,368,456	123,924	2,513,113	45,639	1,376,054	530,530	183,259	1,866,496	684,275
50 and over - dose 2	5,455,624	99,098	1,821,936	35,267	1,008,711	382,372	143,043	1,426,928	510,291
50 and over - population	8,749,703	127,802	2,807,793	62,280	1,758,855	674,384	220,036	2,211,211	885,370
50 and over % with dose 1	84.21%	>95%	89.50%	73.28%	78.24%	78.67%	83.29%	84.41%	77.29%
50 and over % with dose 2	62.35%	77.54%	64.89%	56.63%	57.35%	56.70%	65.01%	64.53%	57.64%
70 and over - dose 1	2,673,368	41,048	904,138	9,903	510,681	210,528	70,363	665,649	241,869
70 and over - dose 2	2,091,126	33,847	702,312	7,821	399,454	157,339	56,599	530,876	189,086
70 and over - population	2,934,706	39,946	962,606	12,343	577,767	240,514	77,155	743,519	280,281
70 and over % with dose 1	91.09%	>95%	93.93%	80.23%	88.39%	87.53%	91.20%	89.53%	86.30%
70 and over % with dose 2	71.26%	84.73%	72.96%	63.36%	69.14%	65.42%	73.36%	71.40%	67.46%
12 to 15 - dose 1	59,651	849	29,572	2,372	10,109	1,025	964	12,484	1,795
12 to 15 - dose 2	5,278	170	2,370	131	1,432	93	74	747	215
12 to 15 - population	1,243,990	19,693	390,330	13,060	270,146	82,747	26,308	308,611	132,869
12 to 15 % with dose 1	4.80%	4.31%	7.58%	18.16%	3.74%	1.24%	3.66%	4.05%	1.35%
12 to 15 % with dose 2	0.42%	0.86%	0.61%	1.00%	0.53%	0.11%	0.28%	0.24%	0.16%

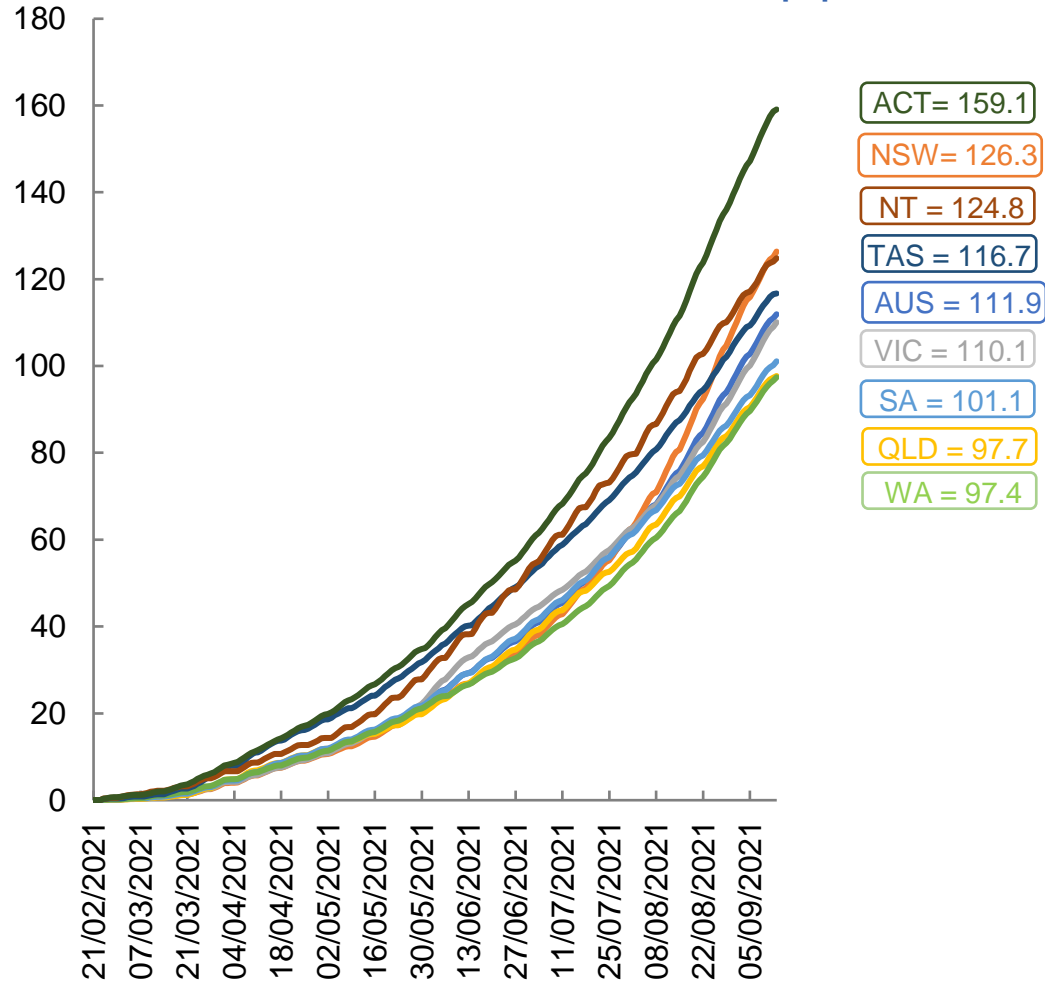
* National population will not equal sum of listed jurisdictions due to a small number of people counted in national population residing in some 'other' territories. Sum of state doses will not add to national total as some records are unable to be geocoded to a State or Territory.
Doses sourced from Australian Immunisation Register, population from ABS ERP June 2020

Vaccinations by location

Data as at:
13 Sep 2021

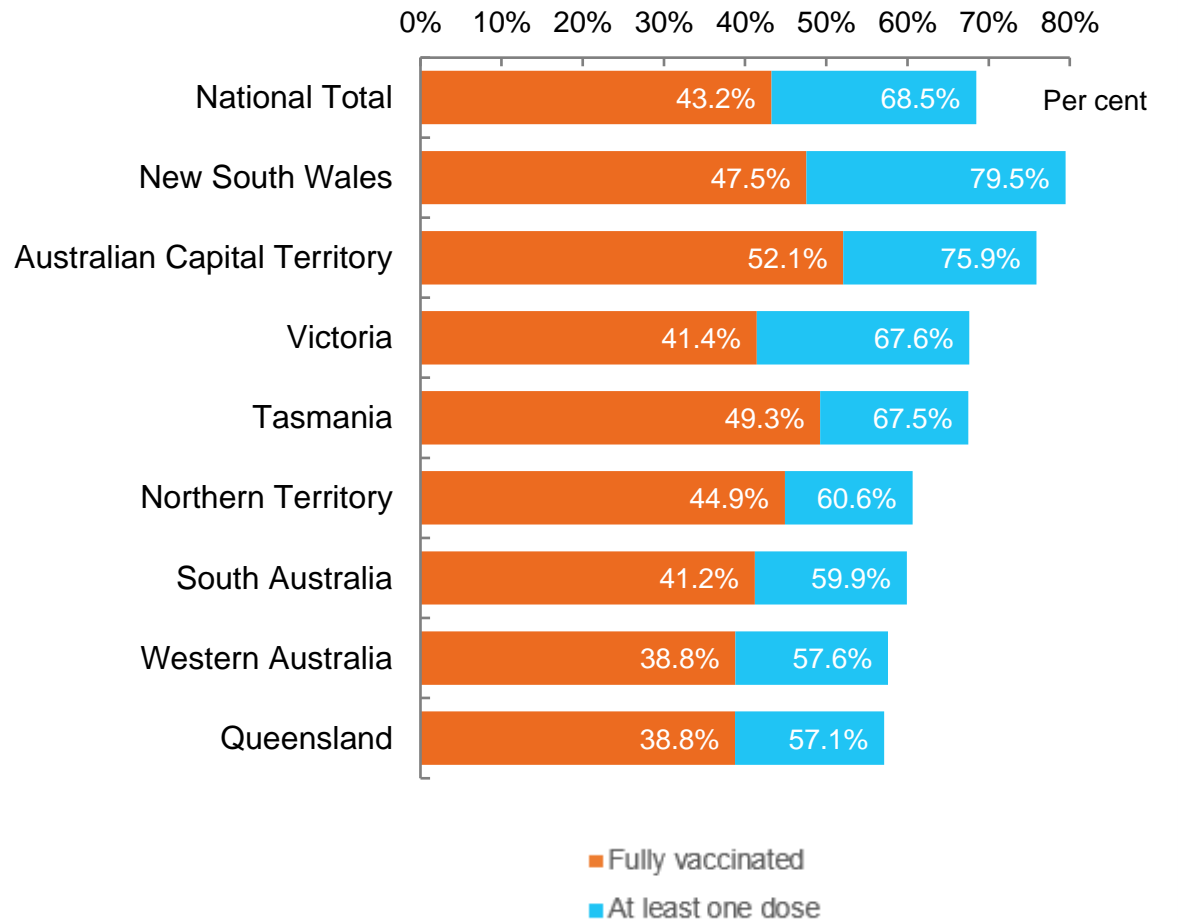
Australia's COVID-19
Vaccine Roadmap

Cumulative total doses administered vs state populations*



*Not an indication of percentage vaccinated, numbers will exceed 100 due to multiple doses required per person of the population

First and Second Doses by state of residence



Aboriginal and Torres Strait Islander peoples

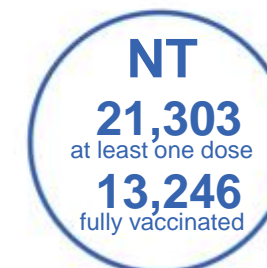
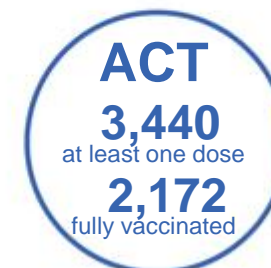
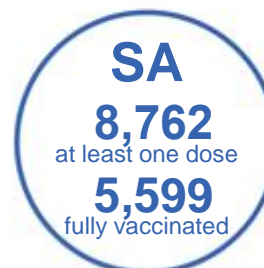
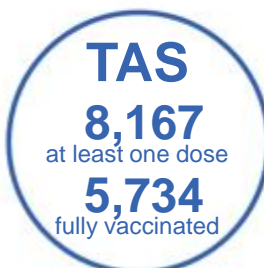
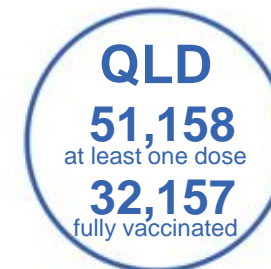
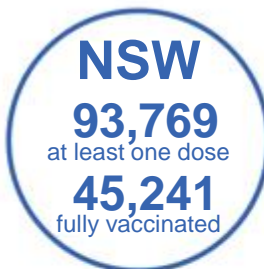
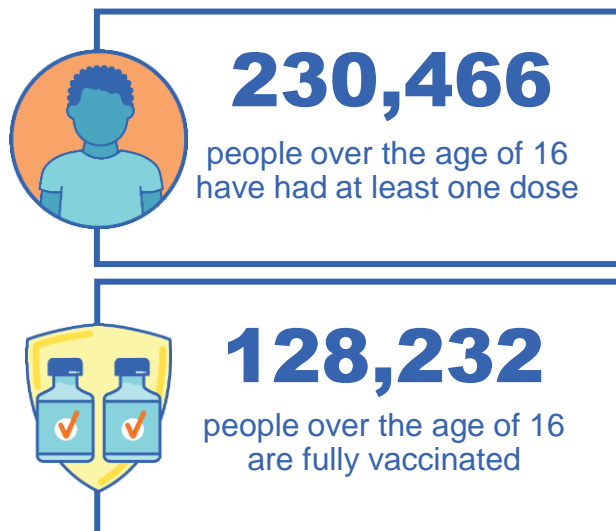
Number of people vaccinated

Data as at:
12 Sep 2021
Updated weekly

Australia's COVID-19
Vaccine Roadmap

166 Aboriginal community controlled health services (ACCHS)

0#	48	26	39	11	3	21	18
ACT	NSW	NT	QLD	SA	TAS	VIC	WA



6,321 people with at least one dose
3,052 people fully vaccinated

residing in other territories or with missing residential information

Source: Australian Immunisation Register

*Identifying as Aboriginal and Torres Strait Islander is optional and the estimated population may be under reported.

**Includes all Aboriginal and Torres Strait Islander peoples who have received a vaccination, not limited to those administered in an ACCHS setting

***Updated weekly.

****. Data corrections identified for Victoria have resulted in adjustments to the number of persons identifying as Aboriginal and Torres Strait Island

#ACCHS in the ACT are currently operating as a Commonwealth Vaccine Clinics so not included to avoid double counting

Data as at:
13 Sep 2021

Commonwealth primary care



Primary care vaccine administration sites

5,421	137	166	3,147
GPs	CVCs	ACCHS	Pharmacies



12,406,476 total vaccine doses administered primary care settings as at 13 September
+ 163,331 recorded in the last 24 hours

Primary care vaccinations by provider type

	Doses administered	Daily increase	7 day increase
General Practice* includes other Commonwealth	11,898,952	147,230	844,349
Pharmacy	507,524	16,101	99,421

NSW
4,879,506
(+78,915 daily increase)

VIC
2,927,657
(+37,486 daily increase)

QLD
2,254,330
(+22,217 daily increase)

WA
1,010,560
(+10,488 daily increase)

TAS
223,978
(+1,949 daily increase)

SA
756,132
(+8,075 daily increase)

ACT
210,276
(+2,344 daily increase)

NT
79,736
(+882 daily increase)

64,301 doses administered to persons residing in other territories or with missing residential information

*General practice includes Commonwealth Vaccination Clinics, Aboriginal Community Health Centres, Royal Flying Doctor Service and other Commonwealth vaccination facilities

Source: Australian Immunisation Register

Data as at:
13 Sep 2021

Commonwealth aged care and disability doses administered



870,219

(+ 10,243 last 24 hours)

Total vaccine doses administered in aged care and disability facilities as at 13 September

Number of doses administered as part of the Commonwealth aged and disability care rollout

NSW
400,384
(+6,333 daily increase)

VIC
166,351
(+365 daily increase)

QLD
136,606
(+3,003 daily increase)

WA
59,277
(+51 daily increase)

TAS
16,068
(+18 daily increase)

SA
53,508
(+86 daily increase)

ACT
10,420
(+128 daily increase)

NT
5,386
(+13 daily increase)

*Sourced from the Australian Immunisation Register. Includes all persons vaccinated at participating residential aged care, disability and related industry settings.

**State level breakdown indicates the residential location and may not align to the state in which the vaccination occurred.

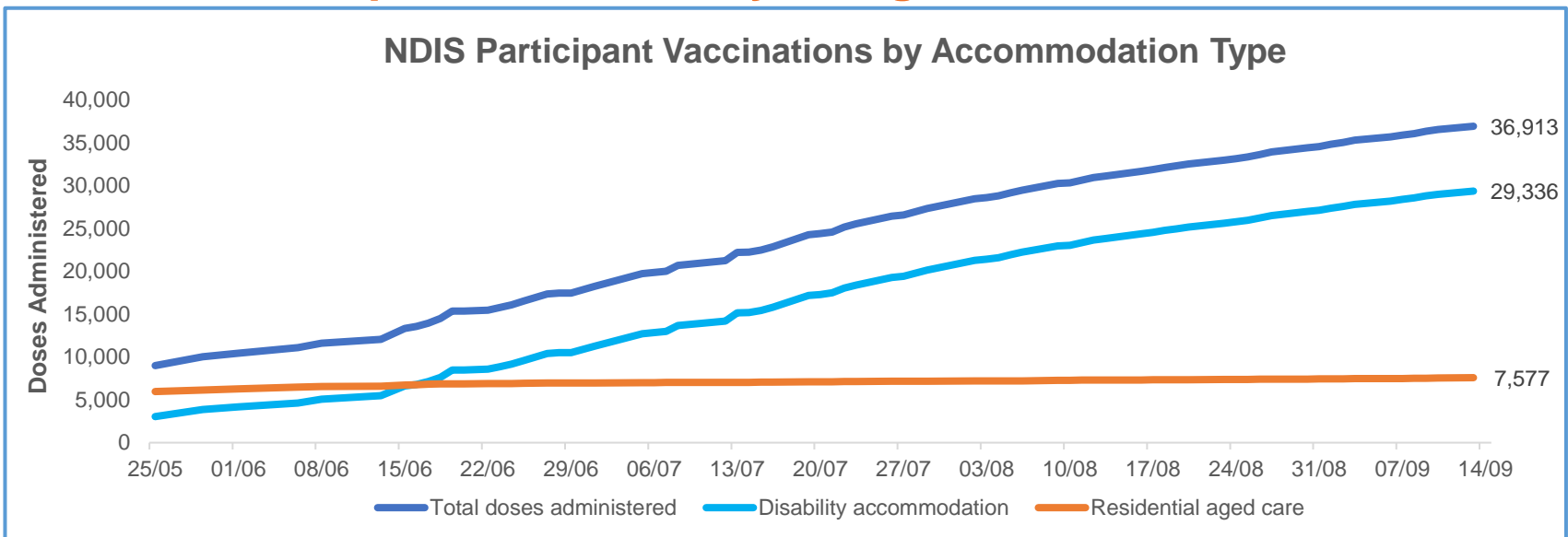
22,219

doses administered to persons residing in other territories or with missing residential information

Data as at:
13 September 2021*

Vaccination rate of people with disability and the disability workforce

Phase 1a – People with disability living in shared accommodation



	Total people with at least one dose	People fully vaccinated	Total number of individuals in cohort	Total doses administered	% People with at least one dose	% People fully vaccinated
NDIS participants living in shared accommodation **	19,858	17,055	27,293	36,913	72.8%	62.5%
NDIS screened workers ***	130,717	97,623	189,644	228,340	68.9%	51.5%

* Updates are available Monday to Friday on participants, and bi-weekly for workers, numbers may be up to four days old.

** Shared accommodation means two or more people with disability living in shared residential accommodation and NDIS participants living in Residential Aged Care accommodation as per the eligibility criteria of Phase 1a.

*** Total number of workers within the NDIS Commission Worker Screening database who have ever been successfully screened and linked to an NDIS registered provider or participant.

Source: Linkage between National Disability Insurance Agency data, NDIS Quality and Safeguards Commission data and the Australian Immunisation Register.



Residential aged care vaccination rollout

Residential aged care facilities status

100% Commonwealth facilities visited (2,569 planned sites)

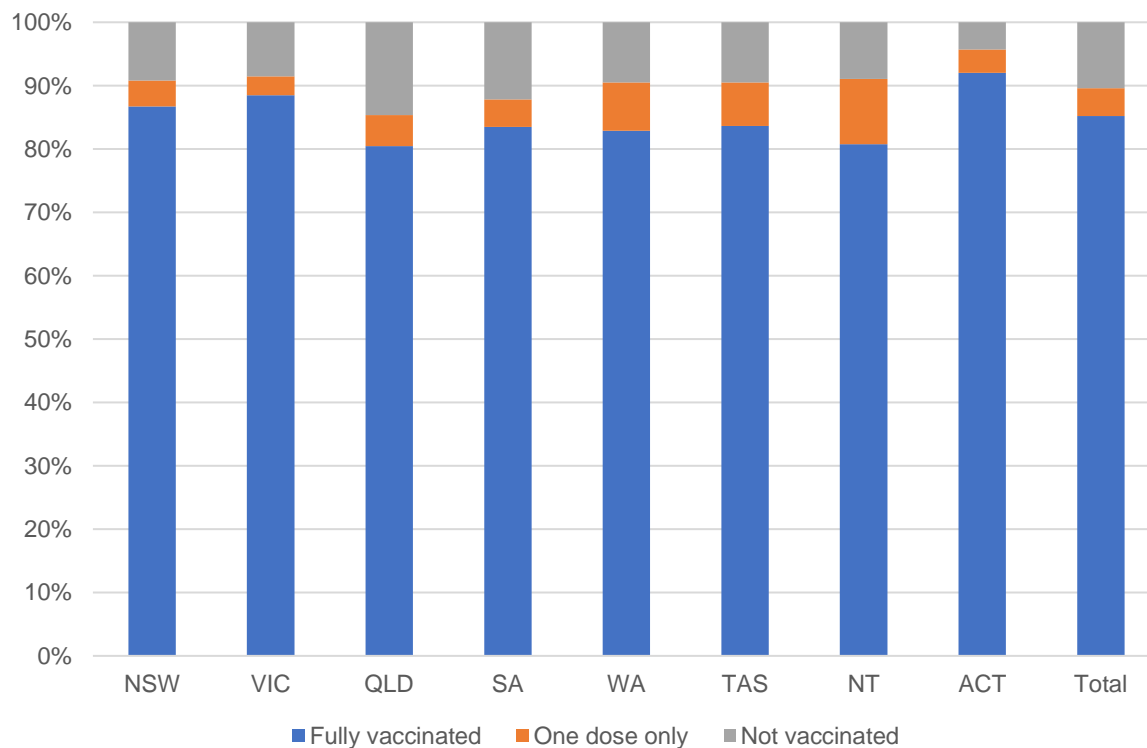
158,809 People fully vaccinated

89.6% Participation rate

Australia's COVID-19 Vaccine Roadmap

Data as at:
13 September 2021*

Aged care resident vaccinations



Aged care worker vaccinations

Jurisdictions	Total workers with at least one dose	Workers fully vaccinated	% Workers with at least one dose	% Workers fully vaccinated
NSW	76,595	61,095	93.6%	74.7%
VIC	67,620	54,686	92.6%	74.9%
QLD	44,389	32,789	89.5%	66.1%
SA	24,443	19,261	90.6%	71.4%
WA	21,211	14,736	87.9%	61.1%
TAS	7,160	5,856	92.4%	75.5%
NT	814	748	92.3%	84.8%
ACT	2818	2197	95.0%	74.0%
Total	245,050	191,368	91.8%	71.7%

Source: My Aged Care Portal staff vaccination progress

**Resident vaccination information is reported manually by service providers

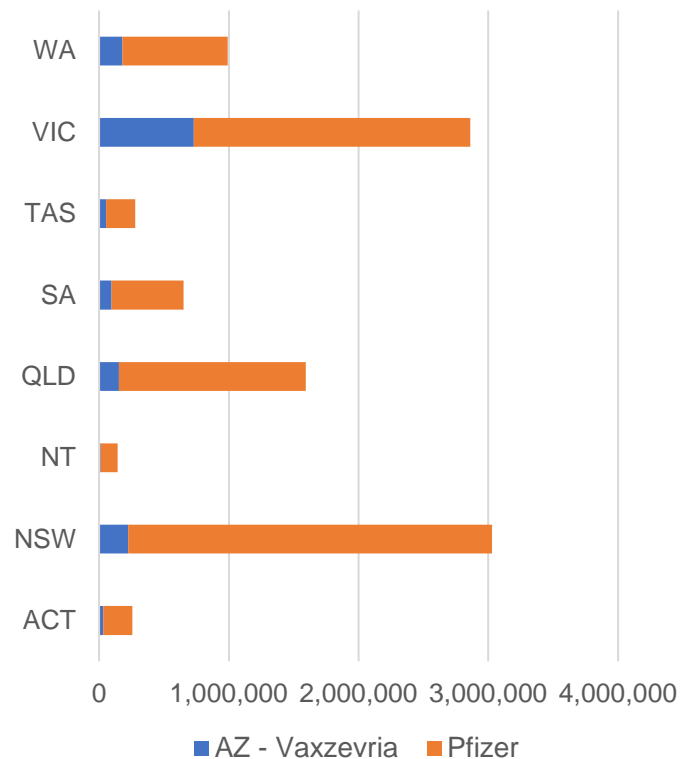
*Status updates are provided by facilities at least once per week. Reporting is updated Monday to Friday to encompass different facility updates being made on different days.

Data is sourced directly from Aged Care Service Providers and is not drawn or closely aligned with data from AIR due to inconsistencies and potential lags in uploading of records.

Data as at:
13 Sep 2021

Jurisdiction administered

Total vaccine doses administered in State and Territory clinics as at 13 September



9,802,054 total vaccine doses administered in State and Territory clinics as at 13 September
+ 102,602 recorded in the last 24 hours
+ 823,600 recorded in the last 7 days

NSW
3,029,794
 (+29,933 daily increase)

VIC
2,861,179
 (+32,845 daily increase)

QLD
1,592,893
 (+11,506 daily increase)

WA
990,996
 (+10,156 daily increase)

TAS
278,283
 (+5,278 daily increase)

SA
649,504
 (+8,386 daily increase)

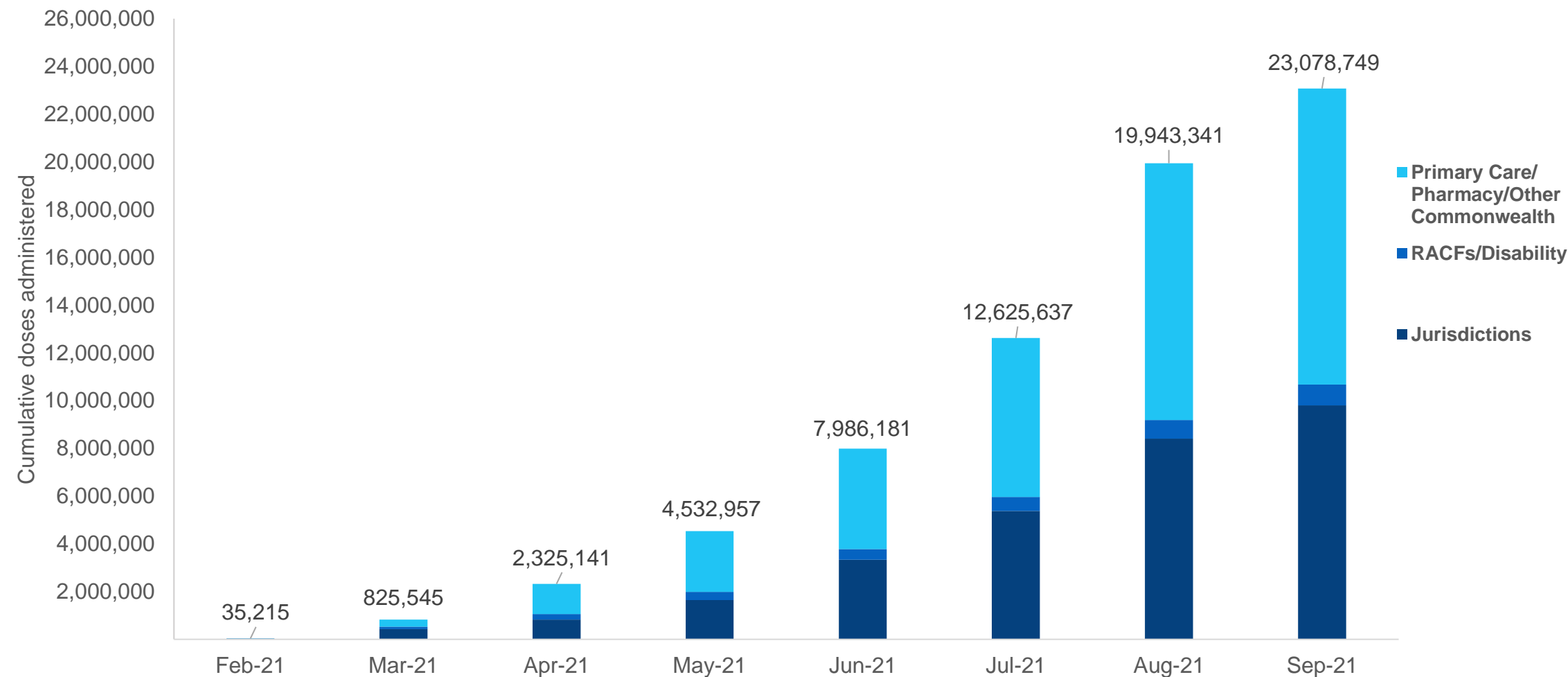
ACT
256,688
 (+3,285 daily increase)

NT
142,717
 (+1,213 daily increase)

*Sourced from the Australian Immunisation Register and self-reported data. Numbers are calculated as difference in daily cumulative reported numbers to allow for historical corrections in all self-reported data sources.

Cumulative doses administered by channel

Data as at:
13 Sep 2021



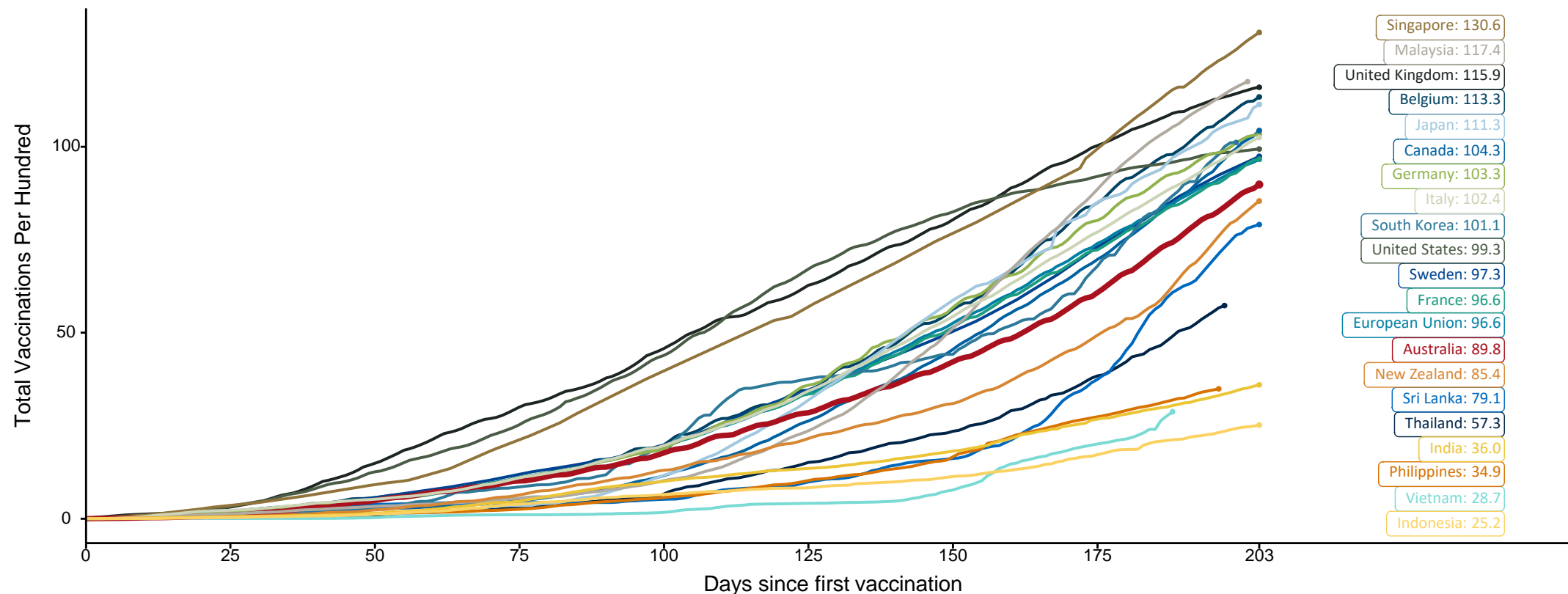
Source: Australian Immunisation Register

Doses at equivalent stages of rollout (Day 203)

Data as at:
13 Sep 2021

The x-axis is truncated at the length of Australia's vaccination program. Countries with intermittent reporting have had their doses per 100 imputed to Australia's current stage of rollout. Israel excluded as it is beyond scale of the graph

Cumulative doses administered (13 Sep): **23,078,749**

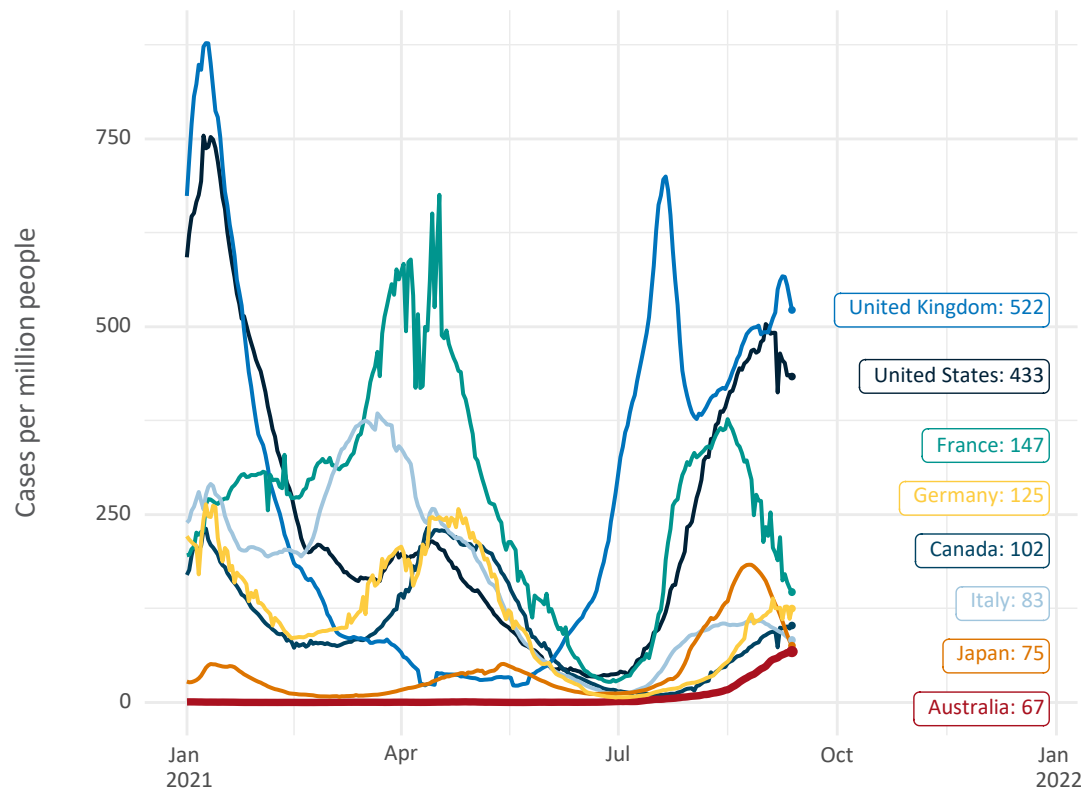


Source: Department of Health (Australia), Our World in Data (international)
Latest data: 13 September

International data – COVID-19

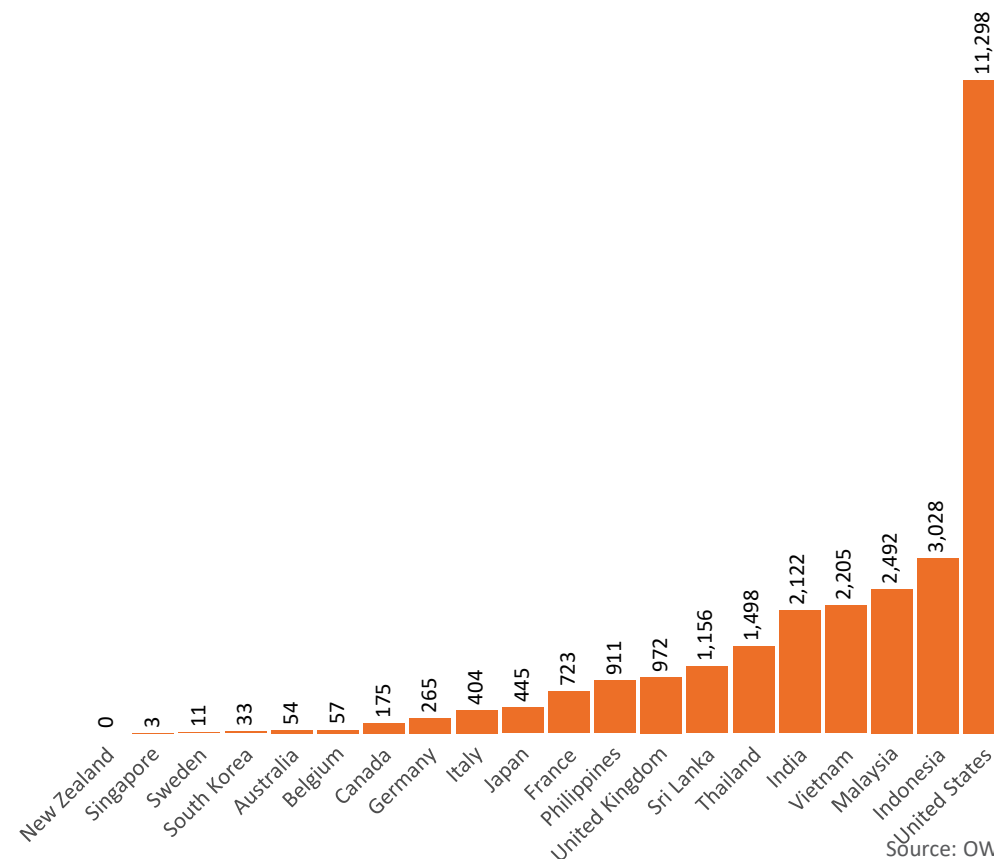
Data as at:
13 Sep 2021

New daily cases per million in 2021, Australia and G7 countries
Smoothed - 7 day average



Source: OWID
Data downloaded: 14 Sep 2021 08:23
Latest data: 12 Sep 2021

COVID-19 deaths in past 7 days - Australia and select countries



Source: OWID
Data downloaded: 14 Sep 2021 08:23
Latest data: 12 Sep 2021

Pandemic Response Payments

Australia's COVID-19
Vaccine Roadmap

Data as at midnight:
13 Sep 2021



2.02 million

People have received at least one COVID
Disaster Payment (including ISP200)

\$7.22 billion

Paid Out as at 13 Sep 2021

3.36 million

Claims granted across
three different payments



93%

of Claims
Received Digitally



COVID Disaster Payment:

3.35 million claims received - 1.87 million individuals paid a total of \$7.01 billion.

\$200 Income Support Payment:

199,000 claims received - 154,000 individuals paid a total of \$135.32 million.

Pandemic Leave Disaster Payment:

58,000 claims received - 50,000 individuals paid a total of \$79.78 million.



**THREE
PAYMENTS
AVAILABLE**

COVID Disaster Payment

assisting during a lockdown
event in a Commonwealth
hotspot.

Income Support Payment \$200

for income support
recipients who lost at
least 8 hours of work.

Pandemic Leave Disaster Payment

for those who have
to self-isolate,
quarantine or care.

For more information visit:
servicesaustralia.gov.au

COVID-19 DISASTER PAYMENTS

New South Wales

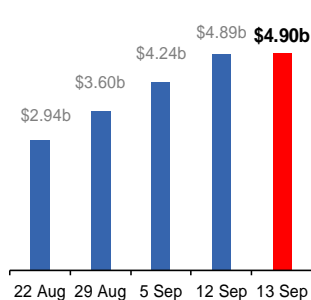
Active lockdown since 24 Jun

**1.02m people have
received at least one
COVID Disaster Payment.**

**\$4.90b paid out as at
13 Sep 2021.**

**\$647m paid in initial and
reoccurring payments in the
week ending 12 Sep 2021.**

Cumulative payments made by State since
activation on 1 Jul 2021.



Victoria

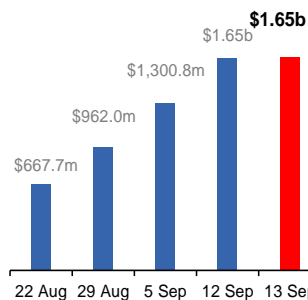
Active lockdown (#6) since 6 Aug

**501,000 people have
received at least one
COVID Disaster Payment.**

**\$1.65b paid out as at
13 Sep 2021.**

**\$346m paid in initial and
reoccurring payments in the
week ending 12 Sep 2021.**

Cumulative payments made by State since
activation on 8 Jun 2021.



Australian Capital Territory

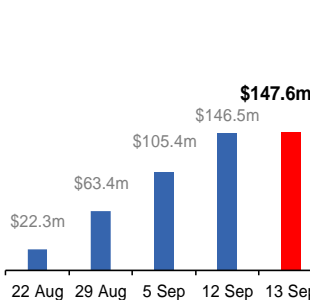
Active lockdown since 12 Aug

**59,000 people have
received at least one
COVID Disaster Payment.**

**\$147.6m paid out as at
13 Sep 2021.**

**\$41m paid in initial and
reoccurring payments in the
week ending 12 Sep 2021.**

Cumulative payments made by State since
activation on 20 Aug 2021.



Northern Territory

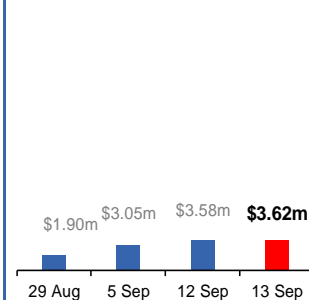
Lockdown from 18 – 20 Jul
Claiming period ends 13 Sep

**5,581 people have
received at least one
COVID Disaster Payment.**

**\$3.62m paid out as at
13 Sep 2021.**

**\$533,000 paid in initial
and reoccurring payments in the
week ending 12 Sep 2021.**

Cumulative payments made by State since
activation on 25 Aug 2021.



Queensland

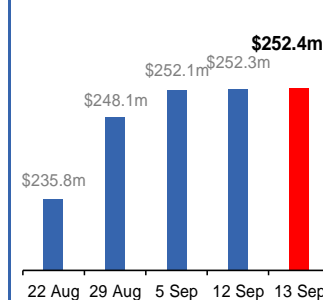
Lockdown from 31 Jul – 11 Aug
Claiming period ended 28 Aug

**196,000 people have
received at least one
COVID Disaster Payment.**

**\$252.4m paid out as at
13 Sep 2021.**

**\$194,000 paid in initial
and reoccurring payments in the
week ending 12 Sep 2021.**

Cumulative payments made by State since
activation on 7 Aug 2021.



South Australia

Lockdown from 21 – 27 Jul
Claiming period ended 17 Aug

**86,000 people have
received at least one
COVID Disaster Payment.**

**\$48.2m paid out as at
13 Sep 2021.**

**\$18,000 paid in initial
and reoccurring payments in the
week ending 12 Sep 2021.**

Cumulative payments made by State since
activation on 28 Jul 2021.

