



Australian Government
Operation COVID Shield

COVID-19 Vaccine Roll-out

11 September 2021

Data as at:
10 Sep 2021

Total vaccine doses



22,473,563 total vaccine
doses administered nationally as at 10 September
+303,552 recorded in the last 24 hours



13,800,869

people have had at least one
dose

66.9%

of people over the age of 16
have had at least one dose



8,631,565

people are fully vaccinated

41.9%

of people over the age of 16 are
fully vaccinated

NSW
8,076,292
(+118,980 daily
increase)

VIC
5,776,635
(+80,945 daily
increase)

QLD
3,922,389
(+49,955 daily
increase)

WA
2,009,846
(+23,773 daily
increase)

TAS
501,812
(+4,202 daily
increase)

SA
1,422,422
(+16,384 daily
increase)

ACT
530,124
(+6,733 daily
increase)

NT
234,043
(+2,580 daily
increase)

*Administration state breakdown indicates state in which a vaccine was administered

**Overall dose count includes instances of more than two doses per person in a small number of cases.

Data as at:
10 Sep 2021

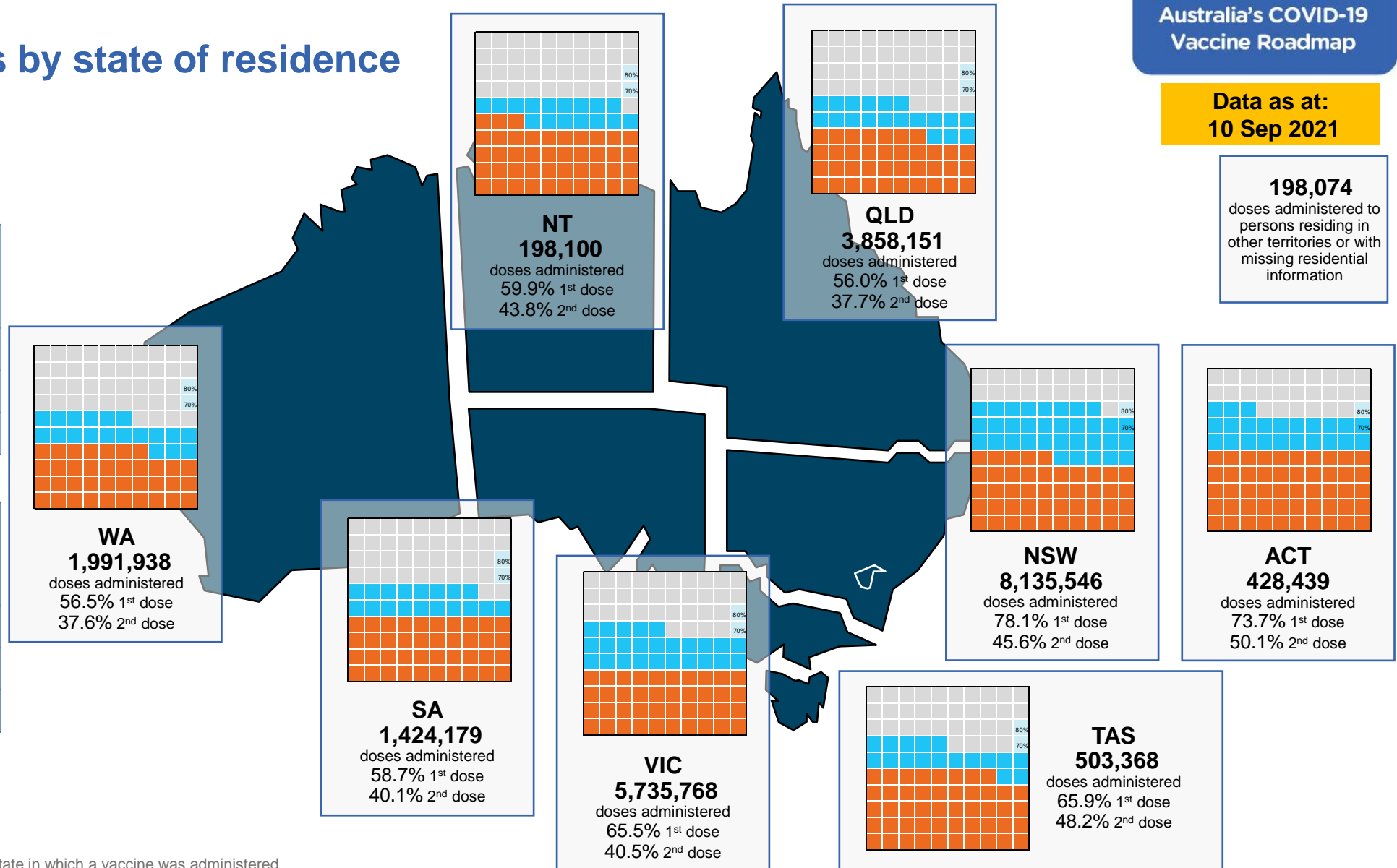
Vaccinations by state of residence

First doses

Age	Today	4 weeks ago	8 weeks ago
16+	66.9%	48.0%	35.6%
50+	83.5%	72.3%	60.2%
70+	90.6%	83.9%	76.6%

Fully vaccinated

Age	Today	4 weeks ago	8 weeks ago
16+	41.9%	26.3%	13.8%
50+	61.0%	38.1%	18.3%
70+	70.3%	52.8%	31.3%



*Residential state may differ from the state in which a vaccine was administered

Commonwealth and Jurisdiction vaccine doses administered

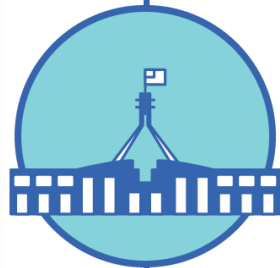
Data as at:
10 Sep 2021



22,473,563 total vaccine
doses administered nationally as at 10 September
+ 303,552 recorded in the last 24 hours



9,511,929
doses administered by state
and territory facilities
+ 126,295
recorded in the last 24 hours



12,961,634
doses administered by
commonwealth facilities
+ 177,257
recorded in the last 24 hours

12,115,070 total vaccine doses
administered in primary care settings
846,564 total vaccine doses
administered in aged care and disability
settings

NSW	Jurisdictions	Commonwealth
Cumulative	2,956,688	5,119,604
Daily increase	35,147	83,833

VIC	Jurisdictions	Commonwealth
Cumulative	2,762,504	3,014,131
Daily increase	39,743	41,202

QLD	Jurisdictions	Commonwealth
Cumulative	1,546,381	2,376,008
Daily increase	23,570	26,385

WA	Jurisdictions	Commonwealth
Cumulative	960,165	1,049,681
Daily increase	12,433	11,340

TAS	Jurisdictions	Commonwealth
Cumulative	270,381	231,431
Daily increase	2,919	1,283

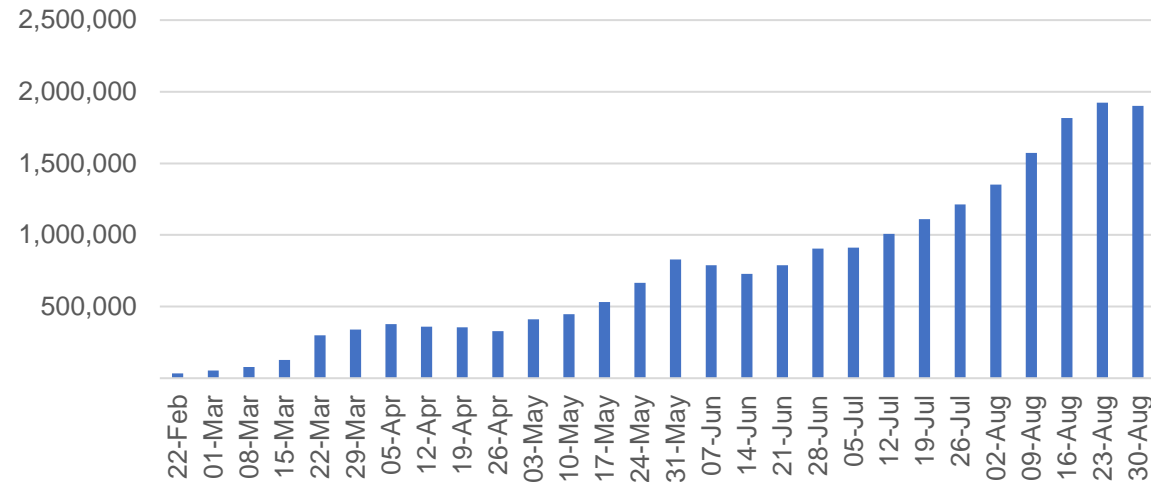
SA	Jurisdictions	Commonwealth
Cumulative	629,649	792,773
Daily increase	7,924	8,460

ACT	Jurisdictions	Commonwealth
Cumulative	246,087	284,037
Daily increase	3,212	3,521

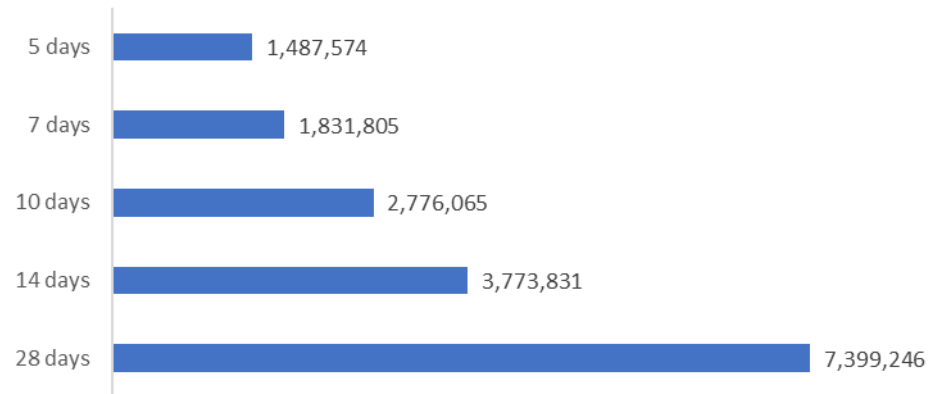
NT	Jurisdictions	Commonwealth
Cumulative	140,074	93,969
Daily increase	1,347	1,233

Vaccine milestone charts

Jabs in arms by week



Doses reported

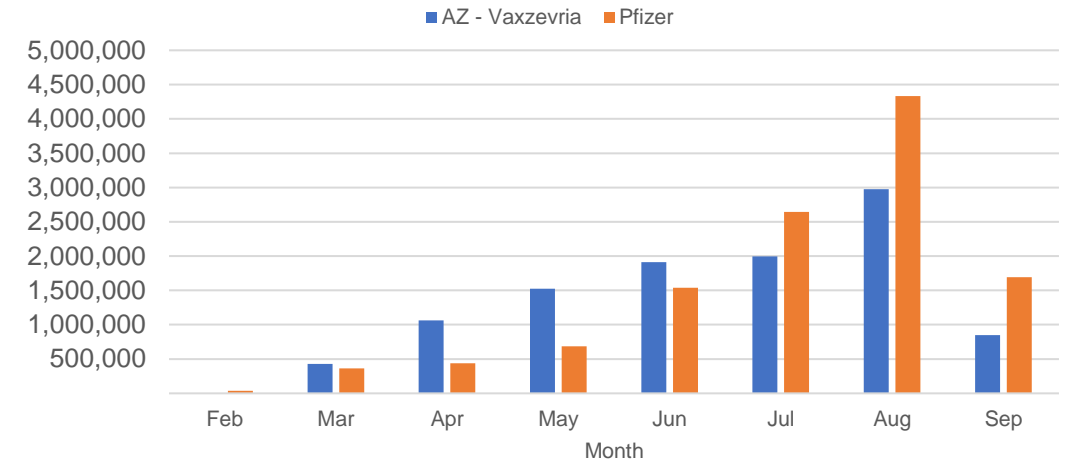


*Sourced from the Australian Immunisation Register.

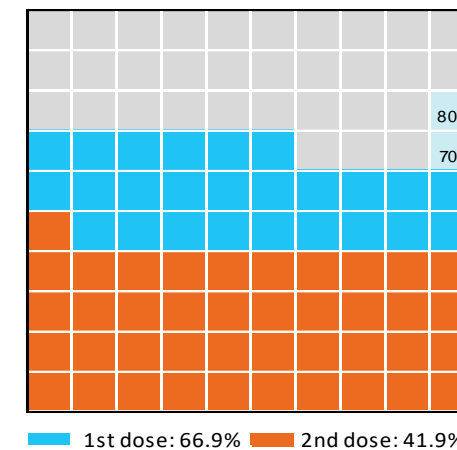
Data as at:
10 Sep 2021

Australia's COVID-19
Vaccine Roadmap

Doses by administration month and vaccine type



Eligible population percentage coverage



*Each square represents 1% of the national population. Squares are filled as milestones are achieved.

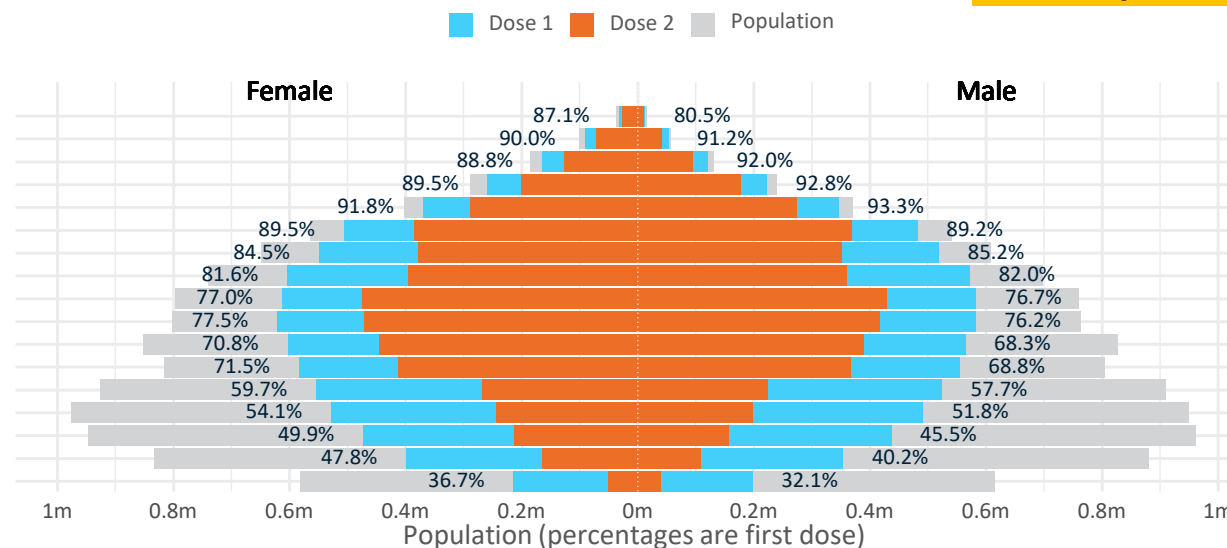
Doses by age and sex

First and second doses by age and sex, using ABS age brackets

Australia's COVID-19
Vaccine Roadmap

Data as at:
10 Sep 2021

Age	Dose 1	Dose 2
95+	45,143 (85.3%)	35,940 (67.9%)
90-94	143,398 (90.5%)	112,562 (71.1%)
85-89	285,159 (90.2%)	220,902 (69.9%)
80-84	481,071 (91.0%)	376,431 (71.2%)
75-79	716,202 (92.6%)	562,200 (72.7%)
70-74	988,465 (89.5%)	753,652 (68.2%)
65-69	1,068,949 (85.0%)	728,680 (57.9%)
60-64	1,176,594 (81.9%)	755,733 (52.6%)
55-59	1,196,394 (76.9%)	904,862 (58.2%)
50-54	1,203,504 (76.9%)	889,164 (56.8%)
45-49	1,167,738 (69.6%)	835,866 (49.9%)
40-44	1,138,895 (70.3%)	781,708 (48.2%)
35-39	1,080,577 (58.9%)	493,732 (26.9%)
30-34	1,024,870 (53.3%)	443,311 (23.0%)
25-29	916,530 (48.1%)	372,036 (19.5%)
20-24	756,177 (44.2%)	274,682 (16.0%)
16-19	411,203 (34.4%)	90,104 (7.5%)



	AUS	ACT	NSW	NT	QLD	SA	TAS	VIC	WA
16 and over - dose 1	13,800,869	253,683	5,124,780	114,127	2,301,878	845,012	289,990	3,539,845	1,195,078
16 and over - dose 2	8,631,565	172,327	2,992,899	83,508	1,549,891	577,505	212,135	2,187,752	794,246
16 and over - population	20,619,959*	344,037	6,565,651	190,571	4,112,707	1,440,400	440,172	5,407,574	2,114,978
16 and over % with dose 1	66.93%	73.74%	78.05%	59.89%	55.97%	58.67%	65.88%	65.46%	56.51%
16 and over % with dose 2	41.86%	50.09%	45.58%	43.82%	37.69%	40.09%	48.19%	40.46%	37.55%
50 and over - dose 1	7,304,879	123,196	2,490,951	45,320	1,365,204	526,168	181,608	1,849,222	678,318
50 and over - dose 2	5,340,126	96,360	1,777,125	34,633	991,088	374,511	140,847	1,397,580	500,434
50 and over - population	8,749,703	127,802	2,807,793	62,280	1,758,855	674,384	220,036	2,211,211	885,370
50 and over % with dose 1	83.49%	>95%	88.72%	72.77%	77.62%	78.02%	82.54%	83.63%	76.61%
50 and over % with dose 2	61.03%	75.40%	63.29%	55.61%	56.35%	55.53%	64.01%	63.20%	56.52%
70 and over - dose 1	2,659,438	40,890	899,331	9,849	508,737	209,512	70,039	661,274	240,670
70 and over - dose 2	2,061,687	33,295	691,177	7,724	395,354	155,128	56,083	522,519	186,686
70 and over - population	2,934,706	39,946	962,606	12,343	577,767	240,514	77,155	743,519	280,281
70 and over % with dose 1	90.62%	>95%	93.43%	79.79%	88.05%	87.11%	90.78%	88.94%	85.87%
70 and over % with dose 2	70.25%	83.35%	71.80%	62.58%	68.43%	64.50%	72.69%	70.28%	66.61%

*National population will not equal sum of listed jurisdictions due to a small number of people counted in national population residing in some 'other' territories

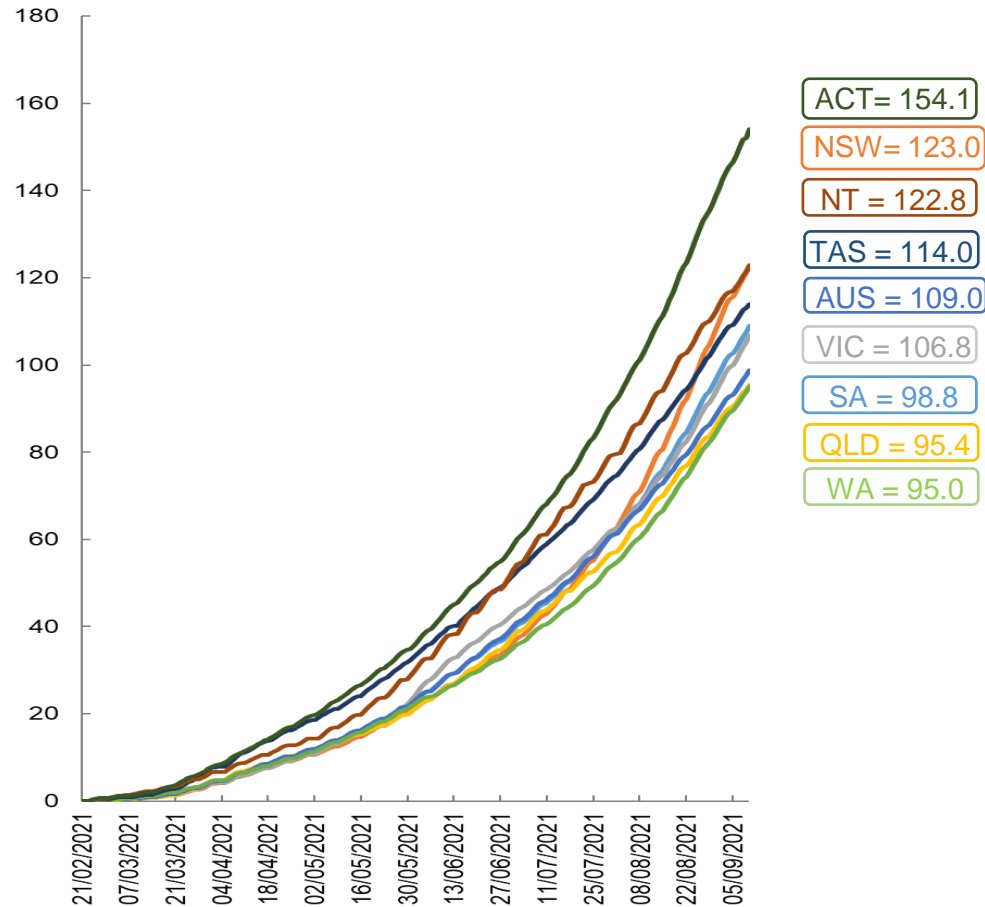
Doses sourced from Australian Immunisation Register, population from ABS ERP June 2020

Vaccinations by location

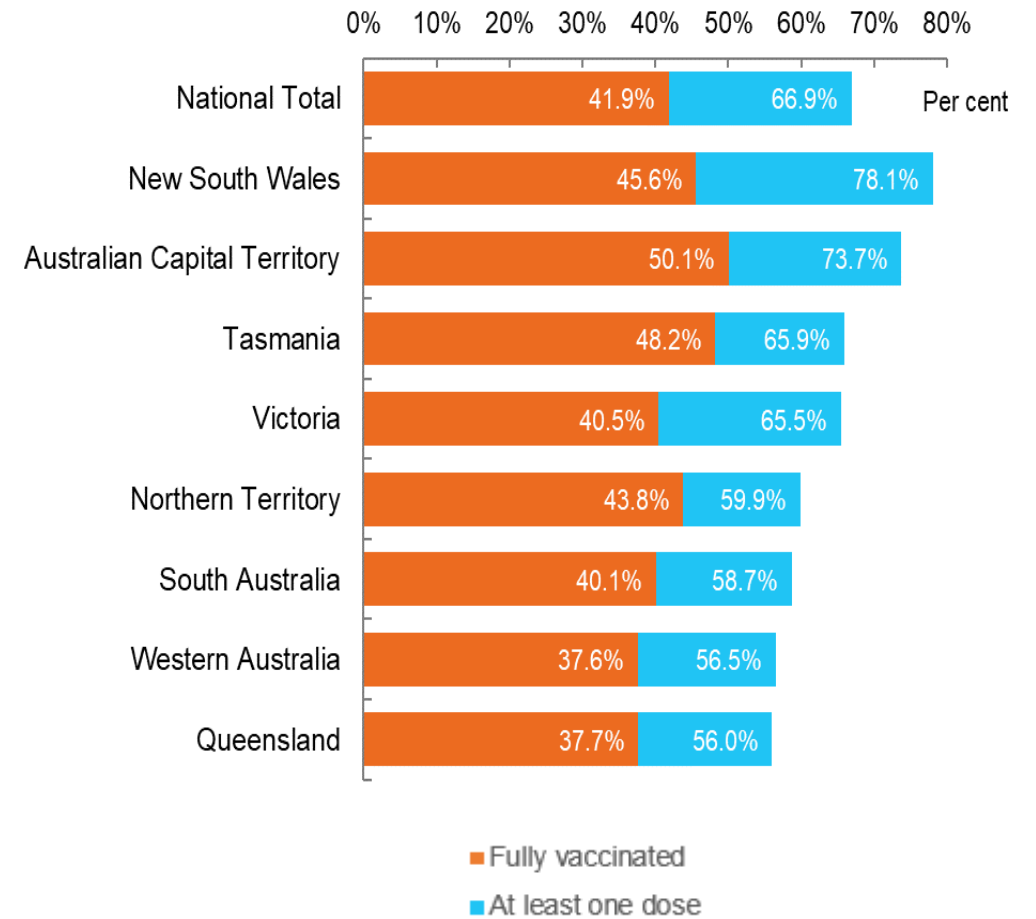
Data as at:
10 Sep 2021

Australia's COVID-19
Vaccine Roadmap

Cumulative total doses administered vs state populations*



First and Second Doses by state of residence



*Not an indication of percentage vaccinated, numbers will exceed 100 due to multiple doses required per person of the population

Aboriginal and Torres Strait Islander peoples

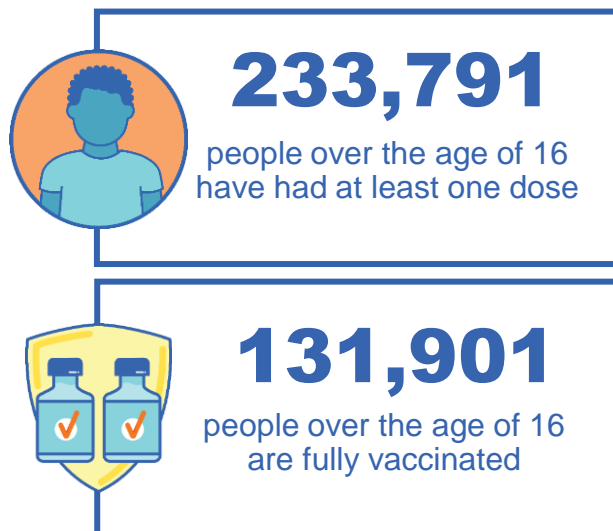
Number of people vaccinated

Data as at:
05 Sep 2021
Updated weekly
Data reconciliation underway

Australia's COVID-19
Vaccine Roadmap

166 Aboriginal community controlled health services (ACCHS)

0#	48	26	39	11	3	21	18
ACT	NSW	NT	QLD	SA	TAS	VIC	WA



6,114 people with at least one dose
2,845 people fully vaccinated

residing in other territories or with missing residential information

Source: Australian Immunisation Register

*Identifying as Aboriginal and Torres Strait Islander is optional and the estimated population may be under reported.

**Includes all Aboriginal and Torres Strait Islander peoples who have received a vaccination, not limited to those administered in an ACCHS setting

***Updated weekly.

#ACCHS in the ACT are currently operating as a Commonwealth Vaccine Clinics so not included to avoid double counting

Data as at:
10 Sep 2021

Commonwealth primary care



Primary care vaccine administration sites

5,378	137	166	3,092
GPs	CVCs	ACCHS	Pharmacies



12,115,070 total vaccine doses administered primary care settings as at 10 September
+ 166,870 recorded in the last 24 hours

Primary care vaccinations by provider type

	Doses administered	Daily increase	7 day increase
General Practice* includes other Commonwealth	11,635,409	146,902	836,543
Pharmacy	479,661	19,968	100,232

NSW
4,743,832
(+79,115 daily increase)

VIC
2,855,454
(+38,530 daily increase)

QLD
2,215,649
(+23,586 daily increase)

WA
991,693
(+11,032 daily increase)

TAS
219,867
(+1,361 daily increase)

SA
742,488
(+8,083 daily increase)

ACT
205,048
(+2,867 daily increase)

NT
78,496
(+1,152 daily increase)

62,543 doses administered to persons residing in other territories or with missing residential information

*General practice includes Commonwealth Vaccination Clinics, Aboriginal Community Health Centres, Royal Flying Doctor Service and other Commonwealth vaccination facilities

Source: Australian Immunisation Register

Data as at:
10 Sep 2021

Commonwealth aged care and disability doses administered



846,564

(+ 10,387 last 24 hours)

Total vaccine doses administered in aged care and disability facilities as at 10 September

Number of doses administered as part of the Commonwealth aged and disability care rollout

NSW
390,787
(+5,331 daily increase)

VIC
163,630
(+1,270 daily increase)

QLD
127,405
(+2,594 daily increase)

WA
58,672
(+374 daily increase)

TAS
15,963
(+40 daily increase)

SA
52,937
(+439 daily increase)

ACT
10,091
(+118 daily increase)

NT
5,361
(+13 daily increase)

21,718

doses administered to persons residing in other territories or with missing residential information

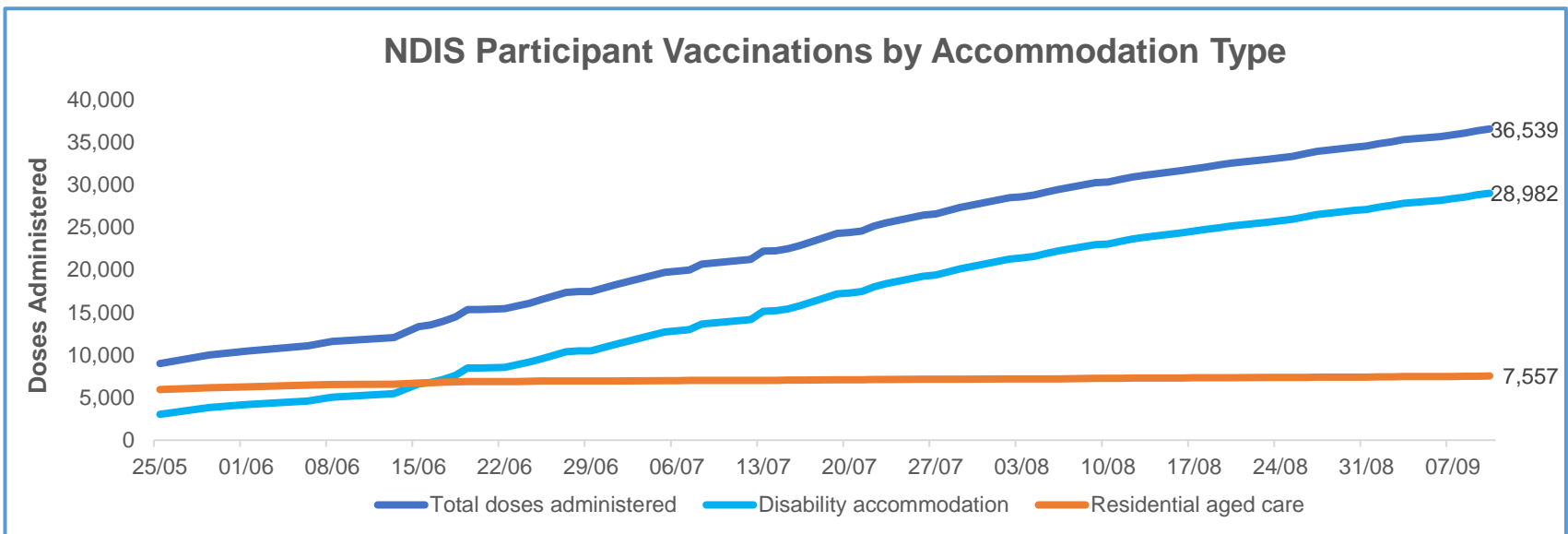
*Sourced from the Australian Immunisation Register. Includes all persons vaccinated at participating residential aged care, disability and related industry settings.

**State level breakdown indicates the residential location and may not align to the state in which the vaccination occurred.

Data as at:
10 September 2021*

Vaccination rate of people with disability and the disability workforce

Phase 1a – People with disability living in shared accommodation



	Total people with at least one dose	People fully vaccinated	Total number of individuals in cohort	Total doses administered	% People with at least one dose	% People fully vaccinated
NDIS participants living in shared accommodation **	19,708	16,831	27,293	36,539	72.2%	61.7%
NDIS screened workers ***	119,538	87,541	177,377	207,079	67.4%	49.4%

* Updates are available Monday to Friday on participants, and bi-weekly for workers, numbers may be up to four days old.

** Shared accommodation means two or more people with disability living in shared residential accommodation and NDIS participants living in Residential Aged Care accommodation as per the eligibility criteria of Phase 1a.

*** Total number of workers within the NDIS Commission Worker Screening database who have ever been successfully screened and linked to an NDIS registered provider or participant.

Source: Linkage between National Disability Insurance Agency data, NDIS Quality and Safeguards Commission data and the Australian Immunisation Register.



Residential aged care vaccination rollout

Residential aged care facilities status

100% Commonwealth facilities visited (2,569 planned sites)

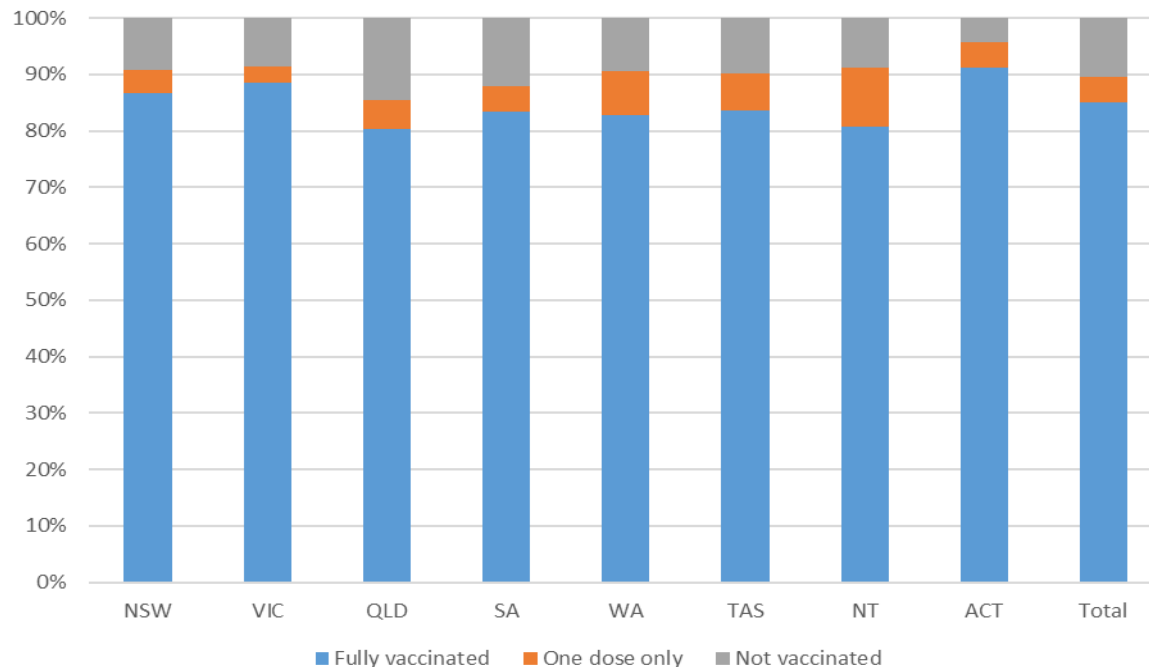
158,618 People fully vaccinated

89.6% Participation rate

Australia's COVID-19 Vaccine Roadmap

Data as at:
10 September 2021*

Aged care resident vaccinations



Aged care worker vaccinations

Jurisdictions	Total workers with at least one dose	Workers fully vaccinated	% Workers with at least one dose	% Workers fully vaccinated
NSW	75,711	60,116	92.6%	73.5%
VIC	67,437	54,227	91.9%	73.9%
QLD	43,999	32,247	88.3%	64.7%
SA	24,246	19,023	89.1%	69.9%
WA	21,093	14,630	87.1%	60.4%
TAS	6,849	5,414	87.0%	68.8%
NT	810	735	90.0%	81.7%
ACT	2,790	2,109	94.2%	71.2%
Total	242,935	188,501	90.6%	70.3%

Source: My Aged Care Portal staff vaccination progress

**Resident vaccination information is reported manually by service providers

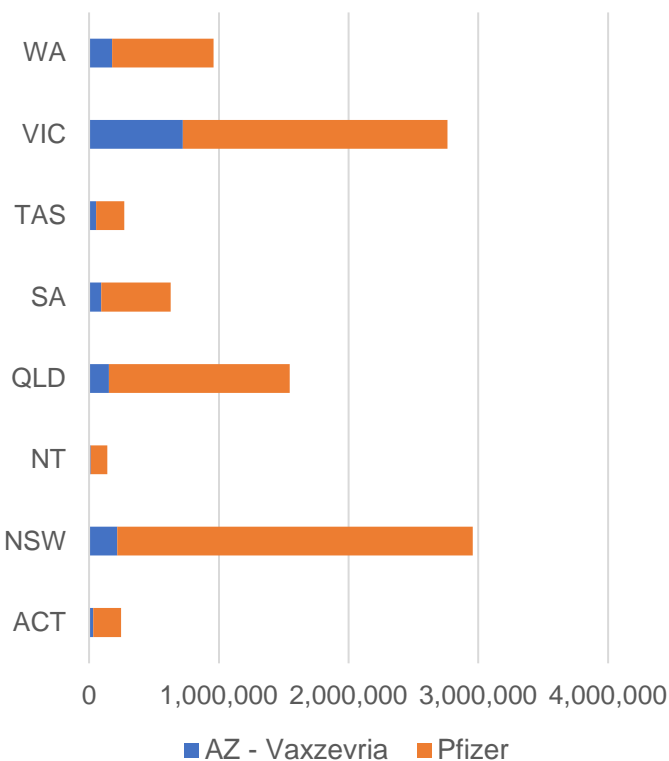
*Status updates are provided by facilities at least once per week. Reporting is updated Monday to Friday to encompass different facility updates being made on different days.

Data is sourced directly from Aged Care Service Providers and is not drawn or closely aligned with data from AIR due to inconsistencies and potential lags in uploading of records.

Data as at:
10 Sep 2021

Jurisdiction administered

Total vaccine doses administered in State and Territory clinics as at 10 September



9,511,929 total vaccine doses administered in State and Territory clinics as at 10 September
+ 126,295 recorded in the last 24 hours
+ 841,984 recorded in the last 7 days

NSW
2,956,688
 (+35,147 daily increase)

VIC
2,762,504
 (+39,743 daily increase)

QLD
1,546,381
 (+23,570 daily increase)

WA
960,165
 (+12,433 daily increase)

TAS
270,381
 (+2,919 daily increase)

SA
629,649
 (+7,924 daily increase)

ACT
246,087
 (+3,212 daily increase)

NT
140,074
 (+1,347 daily increase)

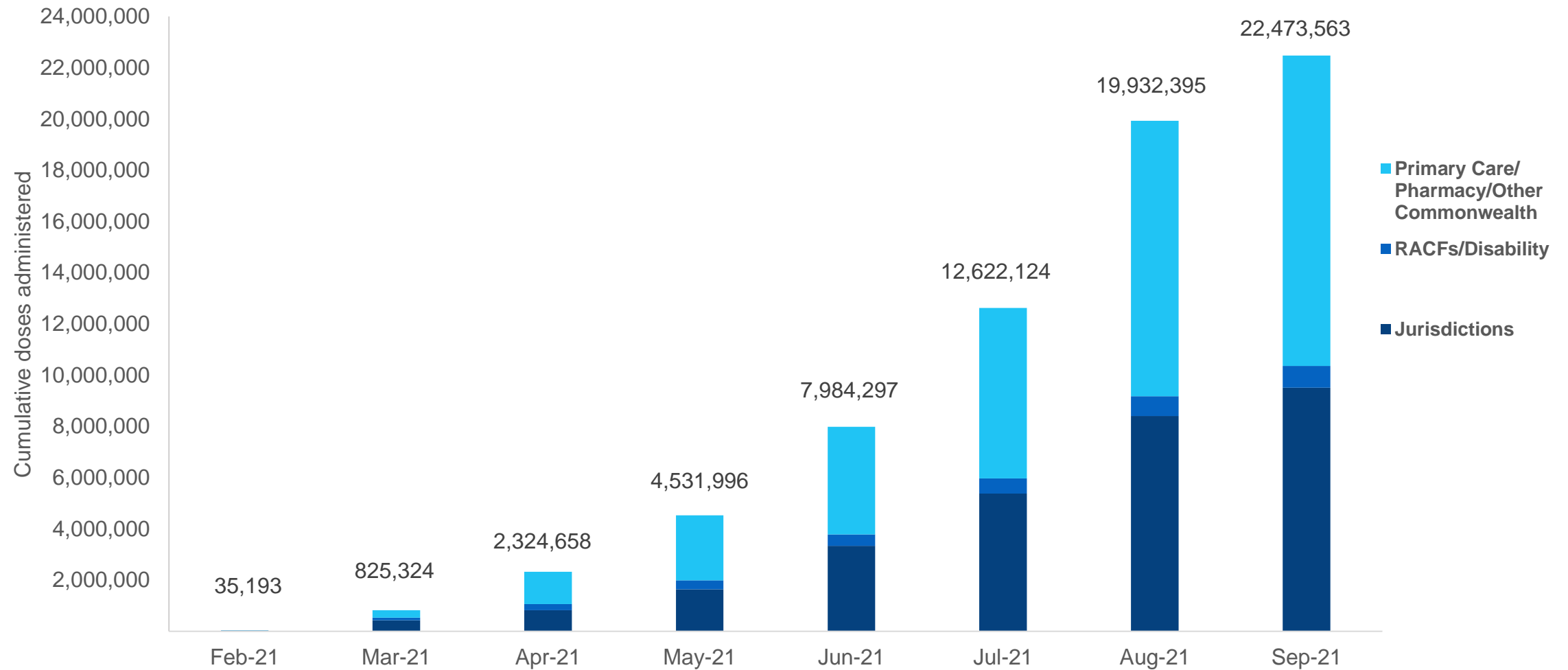
*Sourced from the Australian Immunisation Register and self-reported data. Numbers are calculated as difference in daily cumulative reported numbers to allow for historical corrections in all self-reported data sources.

Source: Australian Immunisation Register

Cumulative doses administered by channel

Data as at:
10 Sep 2021

Australia's COVID-19
Vaccine Roadmap



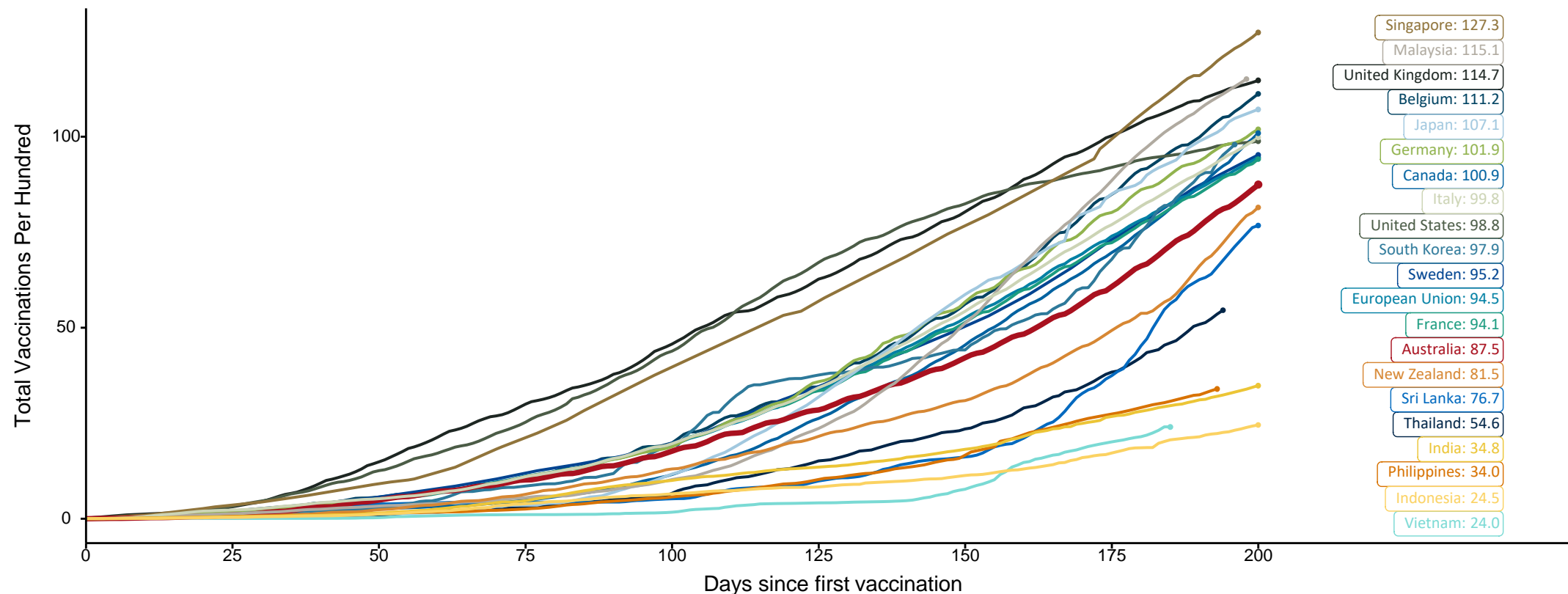
Source: Australian Immunisation Register

Doses at equivalent stages of rollout (Day 200)

Data as at:
10 Sep 2021

The x-axis is truncated at the length of Australia's vaccination program. Countries with intermittent reporting have had their doses per 100 imputed to Australia's current stage of rollout. Israel excluded as it is beyond scale of the graph

Cumulative doses administered (10 Sep): **22,473,563**

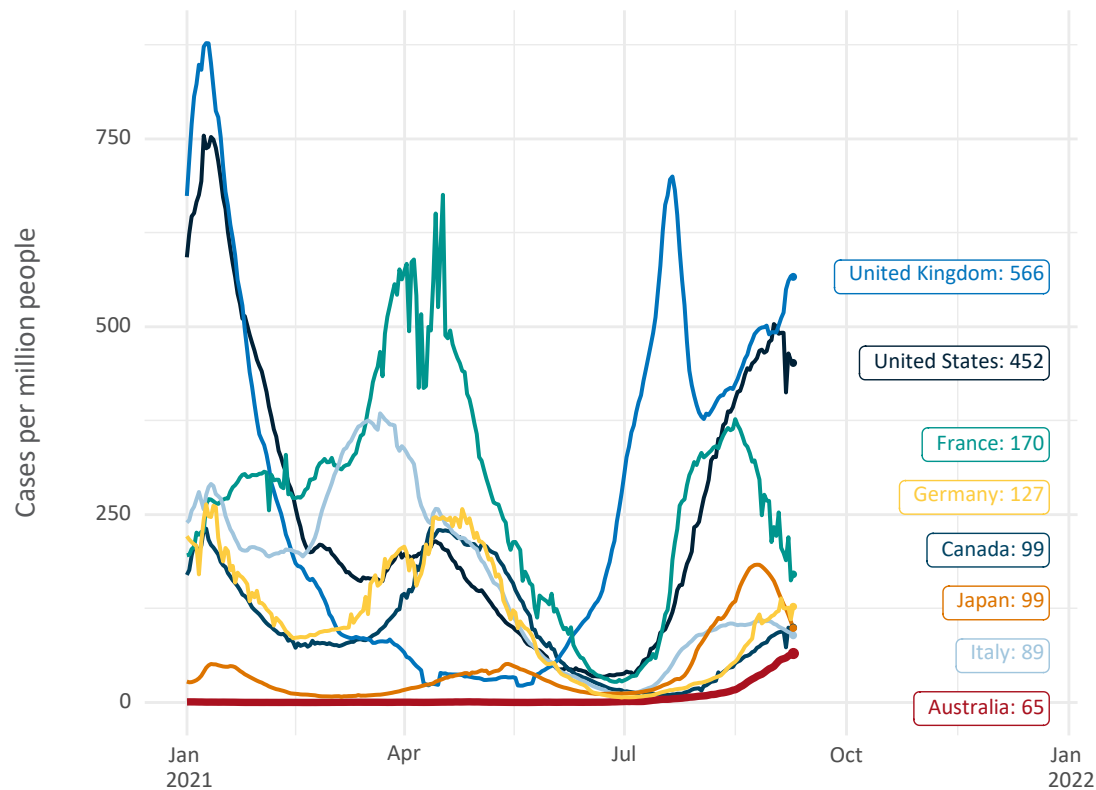


Source: Department of Health (Australia), Our World in Data (international)
Latest data: 10 September

International data – COVID-19

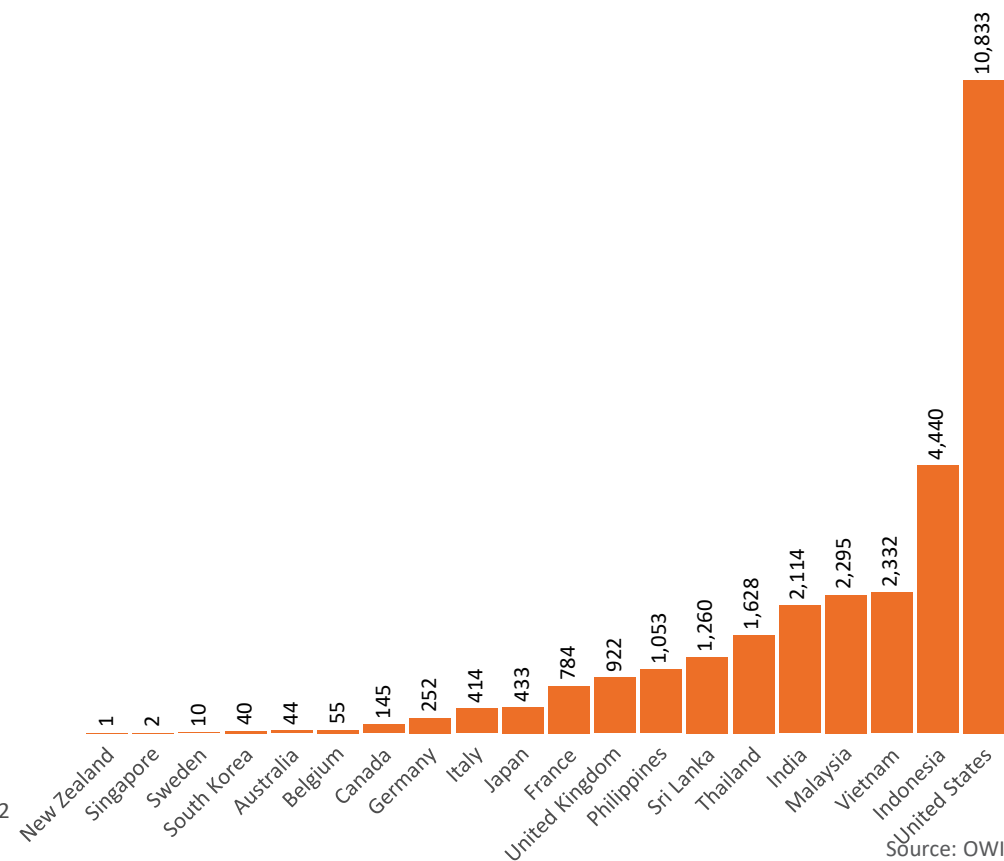
Data as at:
10 Sep 2021

New daily cases per million in 2021, Australia and G7 countries
Smoothed - 7 day average



Source: OWID
Data downloaded: 11 Sep 2021 11:25
Latest data: 09 Sep 2021

COVID-19 deaths in past 7 days - Australia and select countries



Source: OWID
Data downloaded: 11 Sep 2021 11:25
Latest data: 09 Sep 2021

Pandemic Response Payments

Australia's COVID-19
Vaccine Roadmap

Data as at midnight:
10 Sep 2021



2.01 million

People have received at least one COVID
Disaster Payment (including ISP200)

\$6.68 billion

Paid Out as at 10 Sep 2021

3.33 million

Claims granted across
three different payments



93%

of Claims
Received Digitally



COVID Disaster Payment:

3.31 million claims received - 1.86 million individuals paid a total of \$6.49 billion.

\$200 Income Support Payment:

194,000 claims received - 151,000 individuals paid a total of \$120.39 million.

Pandemic Leave Disaster Payment:

57,000 claims received - 49,000 individuals paid a total of \$77.21 million.



**THREE
PAYMENTS
AVAILABLE**

COVID Disaster Payment

assisting during a lockdown
event in a Commonwealth
hotspot.

Income Support Payment \$200

for income support
recipients who lost at
least 8 hours of work.

Pandemic Leave Disaster Payment

for those who have
to self-isolate,
quarantine or care.

For more information visit:
servicesaustralia.gov.au

COVID-19 DISASTER PAYMENTS

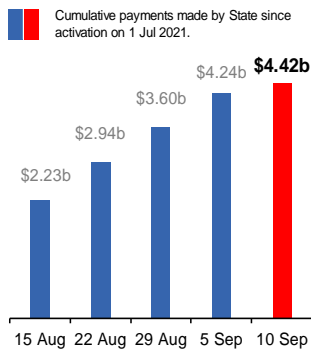
New South Wales

Active lockdown since 24 Jun

**1.02m people have
received at least one
COVID Disaster Payment.**

**\$4.42b paid out as at
10 Sep 2021.**

**\$643m paid in initial and
reoccurring payments in the
week ending 5 Sep 2021.**



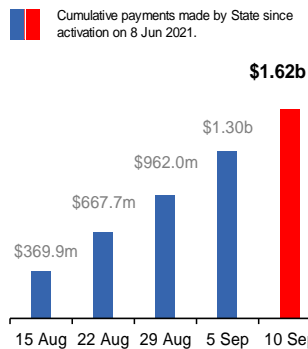
Victoria

Active lockdown (#6) since 6 Aug

**496,000 people have
received at least one
COVID Disaster Payment.**

**\$1.62b paid out as at
10 Sep 2021.**

**\$338m paid in initial and
reoccurring payments in the
week ending 5 Sep 2021.**



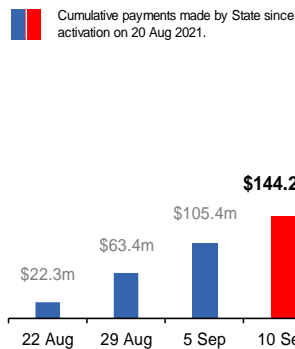
Australian Capital Territory

Active lockdown since 12 Aug

**58,000 people have
received at least one
COVID Disaster Payment.**

**\$144.2m paid out as at
10 Sep 2021.**

**\$42m paid in initial and
reoccurring payments in the
week ending 5 Sep 2021.**



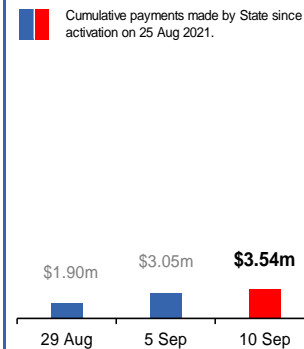
Northern Territory

Lockdown from 18 – 20 Jul
Claiming period ends 13 Sep

**5,463 people have
received at least one
COVID Disaster Payment.**

**\$3.54m paid out as at
10 Sep 2021.**

**\$1.14m paid in initial
payments in the week
ending 5 Sep 2021.**



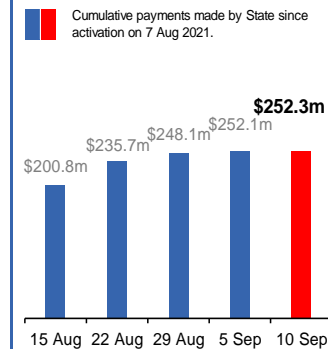
Queensland

Lockdown from 31 Jul – 11 Aug
Claiming period ended 28 Aug

**196,000 people have
received at least one
COVID Disaster Payment.**

**\$252.3m paid out as at
10 Sep 2021.**

**\$4m paid in initial and
reoccurring payments in the
week ending 5 Sep 2021.**



South Australia

Lockdown from 21 – 27 Jul
Claiming period ended 17 Aug

**86,000 people have
received at least one
COVID Disaster Payment.**

**\$48.2m paid out as at
10 Sep 2021.**

**\$27,000 paid in initial
payments in the week
ending 5 Sep 2021.**

