



Australian Government
Operation COVID Shield

COVID-19 Vaccine Roll-out

10 September 2021

Data as at:
09 Sep 2021

Total vaccine doses



22,170,011 total vaccine
doses administered nationally as at 09 September
+319,057 recorded in the last 24 hours



13,646,933

people have had at least one
dose

66.2%

of people over the age of 16
have had at least one dose



8,482,722

people are fully vaccinated

41.1%

of people over the age of 16 are
fully vaccinated

NSW
7,957,312
(+121,182 daily
increase)

VIC
5,695,690
(+86,898 daily
increase)

QLD
3,872,434
(+49,870 daily
increase)

WA
1,986,073
(+26,683 daily
increase)

TAS
497,610
(+6,554 daily
increase)

SA
1,406,038
(+18,576 daily
increase)

ACT
523,391
(+6,421 daily
increase)

NT
231,463
(+2,873 daily
increase)

*Administration state breakdown indicates state in which a vaccine was administered

**Overall dose count includes instances of more than two doses per person in a small number of cases.

Source: Australian Immunisation Register

Data as at:
09 Sep 2021

194,072

doses administered to
persons residing in
other territories or with
missing residential
information

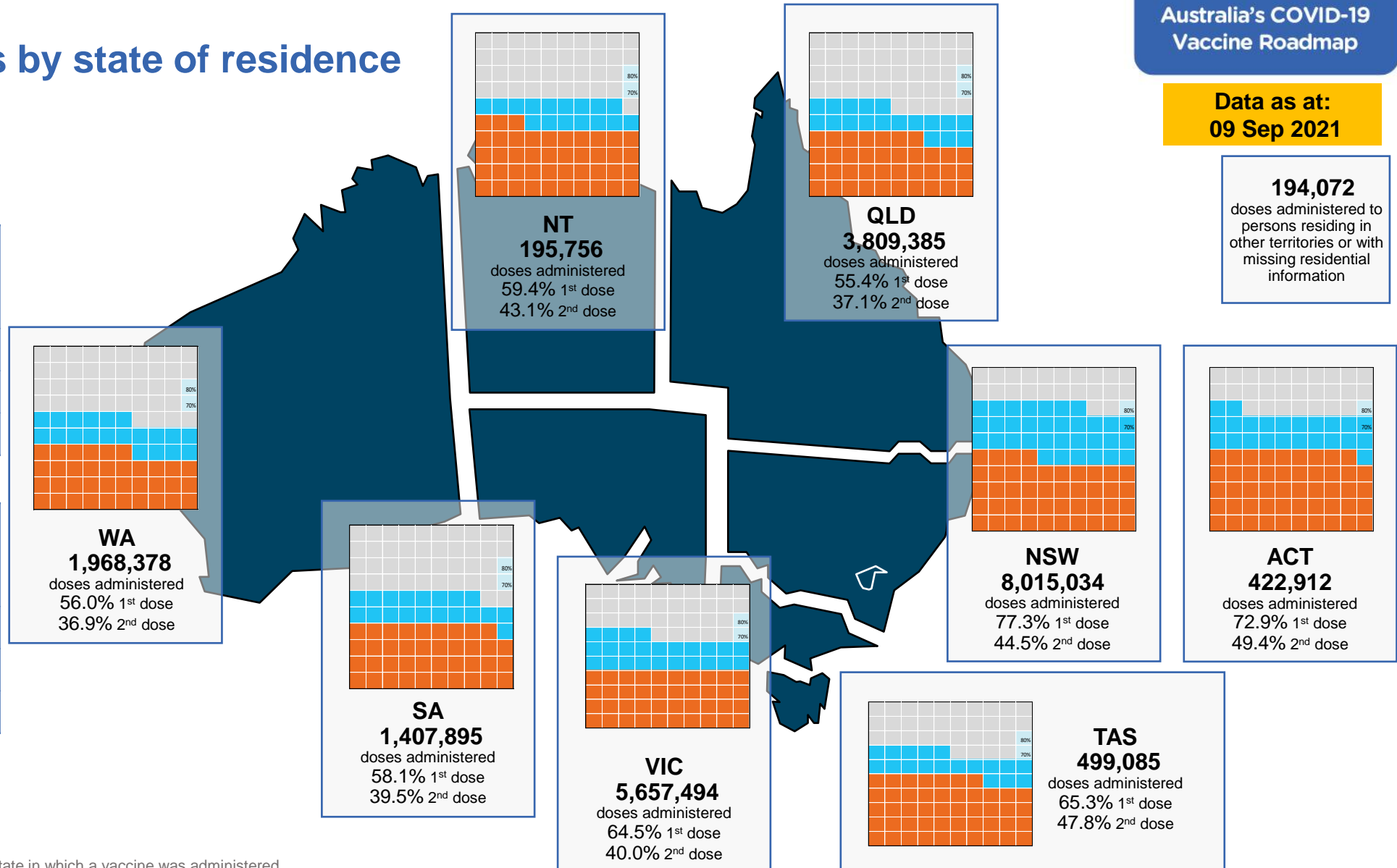
Vaccinations by state of residence

First doses

| Age | Today | 4 weeks ago | 8 weeks ago |
|-----|-------|-------------|-------------|
| 16+ | 66.2% | 47.4% | 35.2% |
| 50+ | 83.1% | 71.8% | 59.8% |
| 70+ | 90.3% | 83.6% | 76.3% |

Fully vaccinated

| Age | Today | 4 weeks ago | 8 weeks ago |
|-----|-------|-------------|-------------|
| 16+ | 41.1% | 25.6% | 13.4% |
| 50+ | 60.2% | 37.1% | 17.6% |
| 70+ | 69.6% | 52.0% | 30.3% |



*Residential state may differ from the state in which a vaccine was administered

Commonwealth and Jurisdiction vaccine doses administered

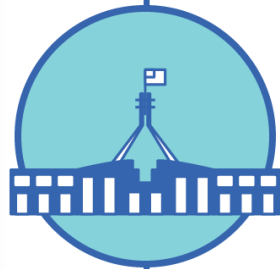
Data as at:
09 Sep 2021



22,170,011 total vaccine
doses administered nationally as at 09 September
+ 319,057 recorded in the last 24 hours



9,385,634
doses administered by state
and territory facilities
+ 157,855
recorded in the last 24 hours



12,784,377
doses administered by
commonwealth facilities
+ 161,202
recorded in the last 24 hours

11,948,200 total vaccine doses
administered in primary care settings
836,177 total vaccine doses
administered in aged care and disability
settings

| NSW | Jurisdictions | Commonwealth |
|----------------|---------------|--------------|
| Cumulative | 2,921,541 | 5,035,771 |
| Daily increase | 38,796 | 82,386 |

| VIC | Jurisdictions | Commonwealth |
|----------------|---------------|--------------|
| Cumulative | 2,722,761 | 2,972,929 |
| Daily increase | 64,549 | 22,349 |

| QLD | Jurisdictions | Commonwealth |
|----------------|---------------|--------------|
| Cumulative | 1,522,811 | 2,349,623 |
| Daily increase | 23,064 | 26,806 |

| WA | Jurisdictions | Commonwealth |
|----------------|---------------|--------------|
| Cumulative | 947,732 | 1,038,341 |
| Daily increase | 13,768 | 12,915 |

| TAS | Jurisdictions | Commonwealth |
|----------------|---------------|--------------|
| Cumulative | 267,462 | 230,148 |
| Daily increase | 3,863 | 2,691 |

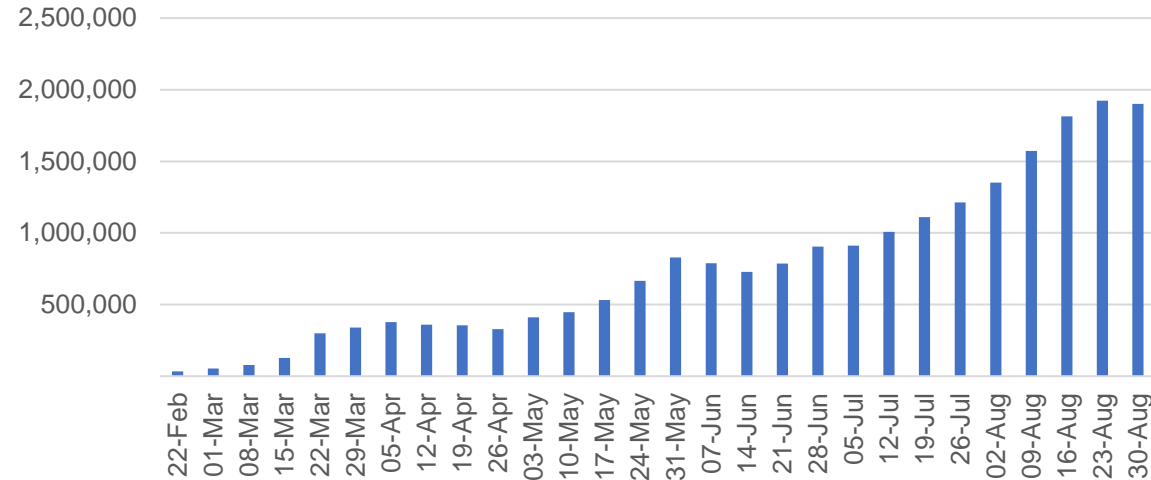
| SA | Jurisdictions | Commonwealth |
|----------------|---------------|--------------|
| Cumulative | 621,725 | 784,313 |
| Daily increase | 8,809 | 9,767 |

| ACT | Jurisdictions | Commonwealth |
|----------------|---------------|--------------|
| Cumulative | 242,875 | 280,516 |
| Daily increase | 3,482 | 2,939 |

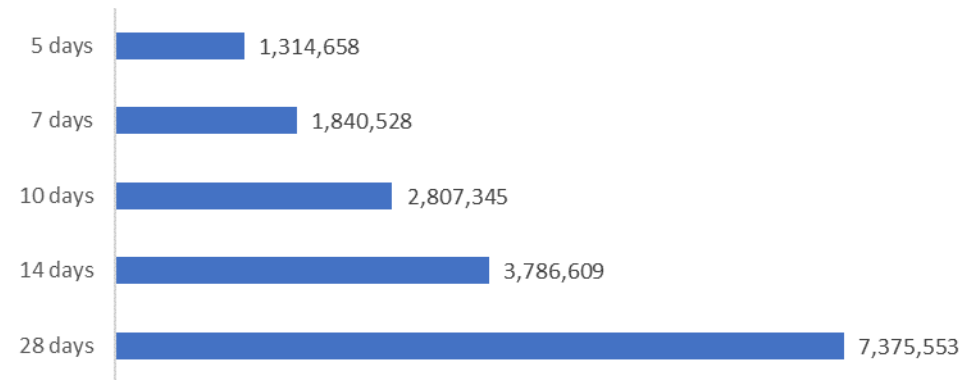
| NT | Jurisdictions | Commonwealth |
|----------------|---------------|--------------|
| Cumulative | 138,727 | 92,736 |
| Daily increase | 1,524 | 1,349 |

Vaccine milestone charts

Jabs in arms by week



Doses reported

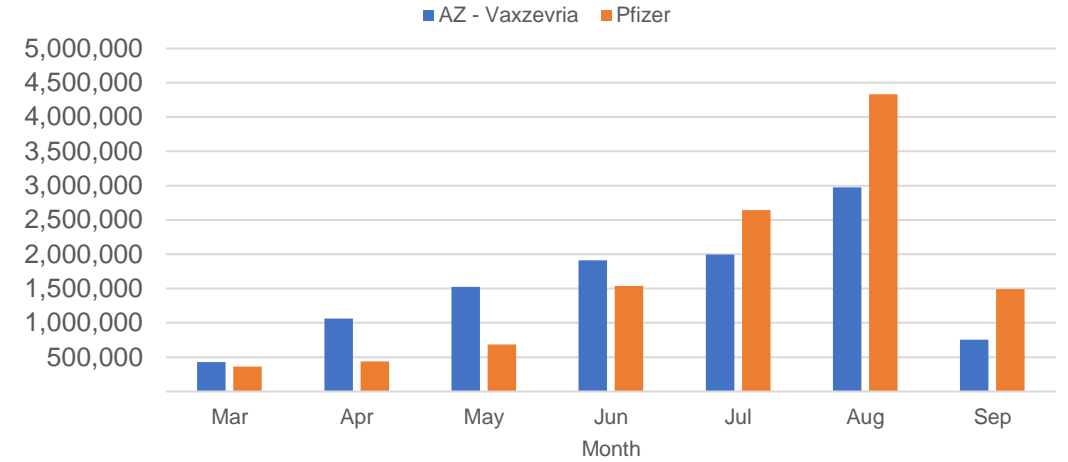


*Sourced from the Australian Immunisation Register.

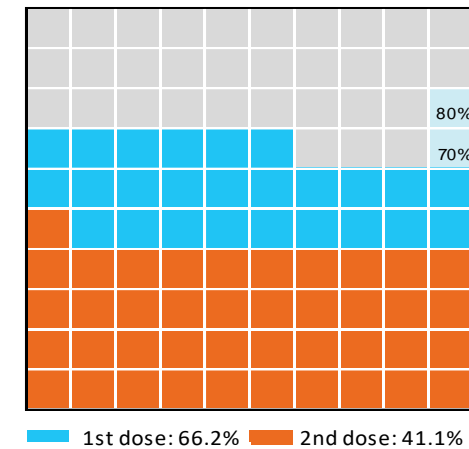
Data as at:
09 Sep 2021

Australia's COVID-19
Vaccine Roadmap

Doses by administration month and vaccine type



Eligible population percentage coverage



*Each square represents 1% of the national population.
Squares are filled as milestones are achieved.

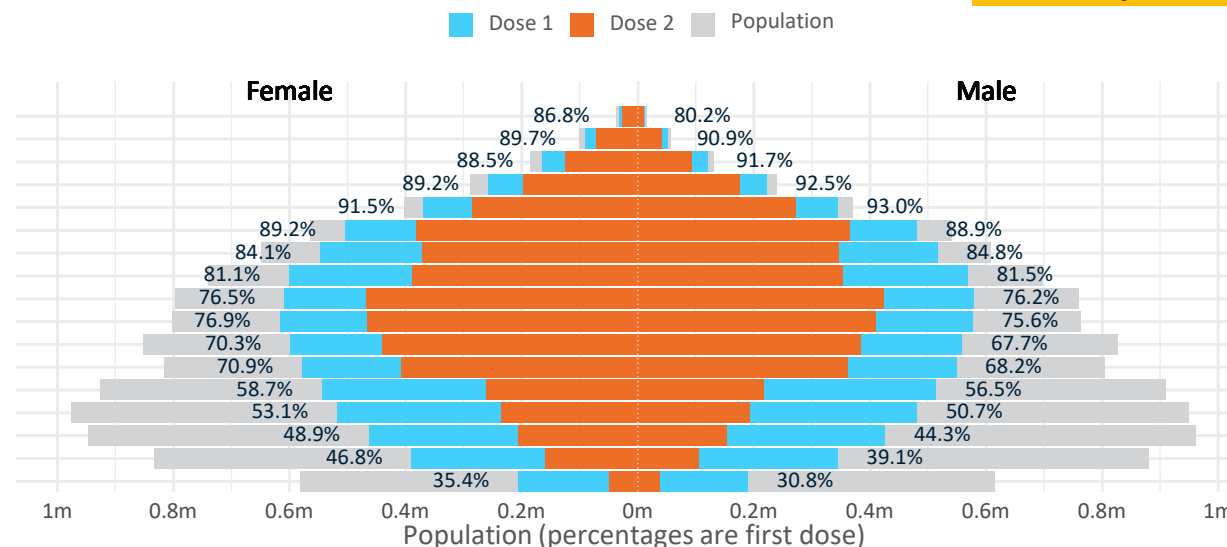
Doses by age and sex

First and second doses by age and sex, using ABS age brackets

Australia's COVID-19
Vaccine Roadmap

Data as at:
09 Sep 2021

| Age | Dose 1 | Dose 2 |
|-------|-------------------|-----------------|
| 95+ | 44,989 (85.0%) | 35,713 (67.5%) |
| 90-94 | 142,974 (90.2%) | 111,700 (70.5%) |
| 85-89 | 284,230 (89.9%) | 218,901 (69.2%) |
| 80-84 | 479,574 (90.8%) | 373,079 (70.6%) |
| 75-79 | 713,825 (92.3%) | 556,871 (72.0%) |
| 70-74 | 985,083 (89.1%) | 746,123 (67.5%) |
| 65-69 | 1,063,652 (84.5%) | 717,325 (57.0%) |
| 60-64 | 1,169,538 (81.4%) | 742,335 (51.7%) |
| 55-59 | 1,188,797 (76.4%) | 891,818 (57.3%) |
| 50-54 | 1,194,647 (76.4%) | 875,049 (55.9%) |
| 45-49 | 1,157,913 (69.1%) | 823,519 (49.1%) |
| 40-44 | 1,128,049 (69.6%) | 768,816 (47.5%) |
| 35-39 | 1,060,425 (57.8%) | 479,229 (26.1%) |
| 30-34 | 1,004,213 (52.2%) | 429,900 (22.3%) |
| 25-29 | 895,849 (47.0%) | 360,756 (18.9%) |
| 20-24 | 737,787 (43.1%) | 265,693 (15.5%) |
| 16-19 | 395,388 (33.1%) | 85,895 (7.2%) |



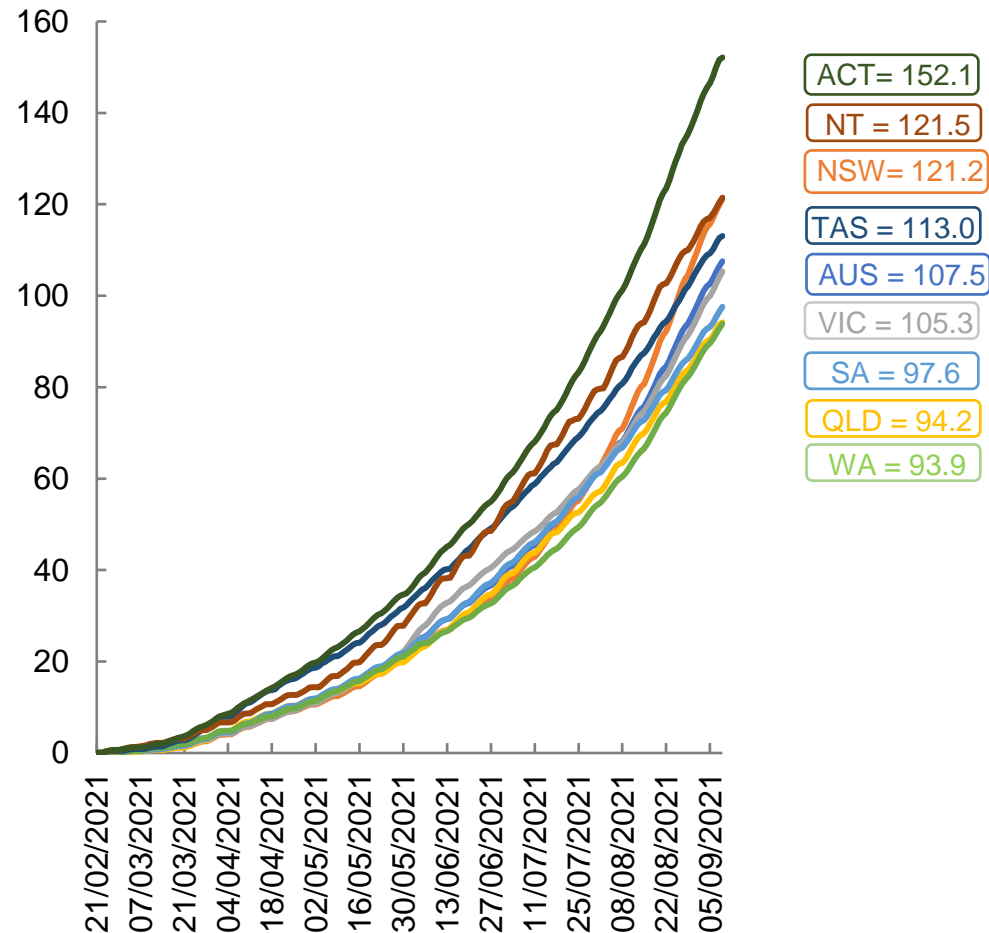
| | AUS | ACT | NSW | NT | QLD | SA | TAS | VIC | WA |
|---------------------------|-------------|---------|-----------|---------|-----------|-----------|---------|-----------|-----------|
| 16 and over - dose 1 | 13,646,933 | 250,647 | 5,073,306 | 113,121 | 2,278,632 | 836,756 | 287,547 | 3,488,492 | 1,184,747 |
| 16 and over - dose 2 | 8,482,722 | 169,867 | 2,924,263 | 82,186 | 1,524,449 | 569,507 | 210,307 | 2,160,985 | 781,063 |
| 16 and over - population | 20,619,959* | 344,037 | 6,565,651 | 190,571 | 4,112,707 | 1,440,400 | 440,172 | 5,407,574 | 2,114,978 |
| 16 and over % with dose 1 | 66.18% | 72.85% | 77.27% | 59.36% | 55.40% | 58.09% | 65.33% | 64.51% | 56.02% |
| 16 and over % with dose 2 | 41.14% | 49.37% | 44.54% | 43.13% | 37.07% | 39.54% | 47.78% | 39.96% | 36.93% |
| 50 and over - dose 1 | 7,267,309 | 122,857 | 2,476,961 | 45,027 | 1,358,858 | 523,921 | 181,012 | 1,839,387 | 674,717 |
| 50 and over - dose 2 | 5,268,914 | 95,252 | 1,748,973 | 34,150 | 979,392 | 369,433 | 139,943 | 1,380,170 | 494,353 |
| 50 and over - population | 8,749,703 | 127,802 | 2,807,793 | 62,280 | 1,758,855 | 674,384 | 220,036 | 2,211,211 | 885,370 |
| 50 and over % with dose 1 | 83.06% | >95% | 88.22% | 72.30% | 77.26% | 77.69% | 82.26% | 83.18% | 76.21% |
| 50 and over % with dose 2 | 60.22% | 74.53% | 62.29% | 54.83% | 55.68% | 54.78% | 63.60% | 62.42% | 55.84% |
| 70 and over - dose 1 | 2,650,675 | 40,800 | 896,169 | 9,802 | 507,519 | 208,938 | 69,899 | 658,642 | 239,845 |
| 70 and over - dose 2 | 2,042,387 | 33,006 | 683,608 | 7,668 | 392,444 | 153,637 | 55,862 | 517,373 | 185,172 |
| 70 and over - population | 2,934,706 | 39,946 | 962,606 | 12,343 | 577,767 | 240,514 | 77,155 | 743,519 | 280,281 |
| 70 and over % with dose 1 | 90.32% | >95% | 93.10% | 79.41% | 87.84% | 86.87% | 90.60% | 88.58% | 85.57% |
| 70 and over % with dose 2 | 69.59% | 82.63% | 71.02% | 62.12% | 67.92% | 63.88% | 72.40% | 69.58% | 66.07% |

*National population will not equal sum of listed jurisdictions due to a small number of people counted in national population residing in some 'other' territories

Doses sourced from Australian Immunisation Register, population from ABS ERP June 2020

Vaccinations by location

Cumulative total doses administered vs state populations*

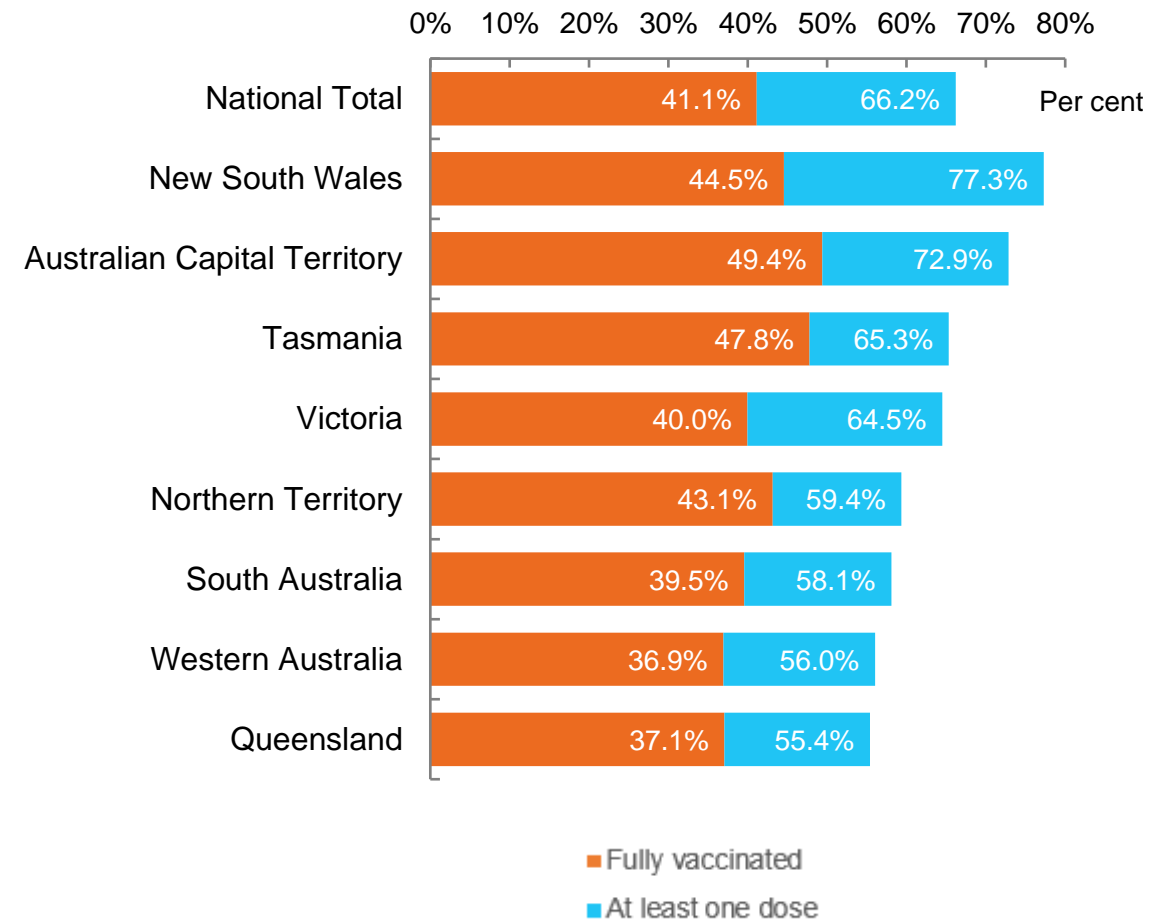


*Not an indication of percentage vaccinated, numbers will exceed 100 due to multiple doses required per person of the population

Data as at:
09 Sep 2021

Australia's COVID-19
Vaccine Roadmap

First and Second Doses by state of residence

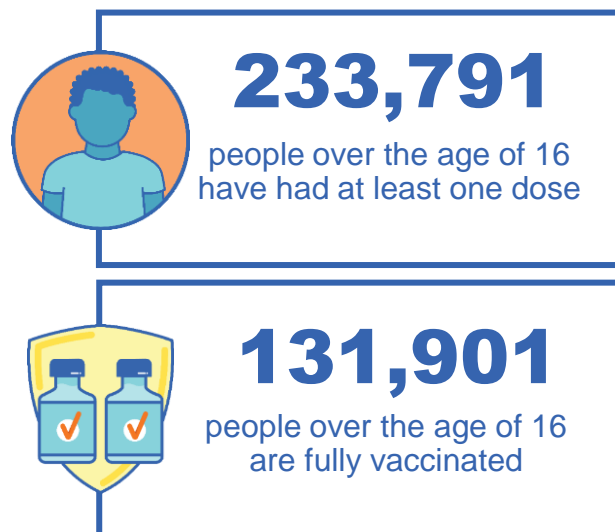


Aboriginal and Torres Strait Islander peoples

Number of people vaccinated

Data as at:
05 Sep 2021
Updated weekly
Data reconciliation underway

Australia's COVID-19
Vaccine Roadmap



166 Aboriginal community controlled health services (ACCHS)

| 0# | 48 | 26 | 39 | 11 | 3 | 21 | 18 |
|-----|-----|----|-----|----|-----|-----|----|
| ACT | NSW | NT | QLD | SA | TAS | VIC | WA |



6,114 people with at least one dose
2,845 people fully vaccinated

residing in other territories or with missing residential information

Source: Australian Immunisation Register

*Identifying as Aboriginal and Torres Strait Islander is optional and the estimated population may be under reported.

**Includes all Aboriginal and Torres Strait Islander peoples who have received a vaccination, not limited to those administered in an ACCHS setting

***Updated weekly.

#ACCHS in the ACT are currently operating as a Commonwealth Vaccine Clinics so not included to avoid double counting

Data as at:
09 Sep 2021

Commonwealth primary care



Primary care vaccine administration sites

| | | | |
|--------------|------------|------------|--------------|
| 5,378 | 137 | 166 | 3,092 |
| GPs | CVCs | ACCHS | Pharmacies |



11,948,200 total vaccine doses administered primary care settings as at 09 September
+ 149,272 recorded in the last 24 hours

Primary care vaccinations by provider type

| | Doses administered | Daily increase | 7 day increase |
|--|--------------------|----------------|----------------|
| General Practice* includes other Commonwealth | 11,488,507 | 132,186 | 838,837 |
| Pharmacy | 459,693 | 17,086 | 98,221 |



61,399 doses administered to persons residing in other territories or with missing residential information

*General practice includes Commonwealth Vaccination Clinics, Aboriginal Community Health Centres, Royal Flying Doctor Service and other Commonwealth vaccination facilities

Source: Australian Immunisation Register

Data as at:
09 Sep 2021

Commonwealth aged care and disability doses administered



836,177

(+ 11,930 last 24 hours)

Total vaccine doses administered in aged care and disability facilities as at 09 September

Number of doses administered as part of the Commonwealth aged and disability care rollout

NSW
385,456
(+5,000 daily increase)

VIC
162,360
(+1,715 daily increase)

QLD
124,811
(+2,766 daily increase)

WA
58,298
(+910 daily increase)

TAS
15,923
(+9 daily increase)

SA
52,498
(+1,130 daily increase)

ACT
9,973
(+249 daily increase)

NT
5,348
(+9 daily increase)

21,510

doses administered to persons residing in other territories or with missing residential information

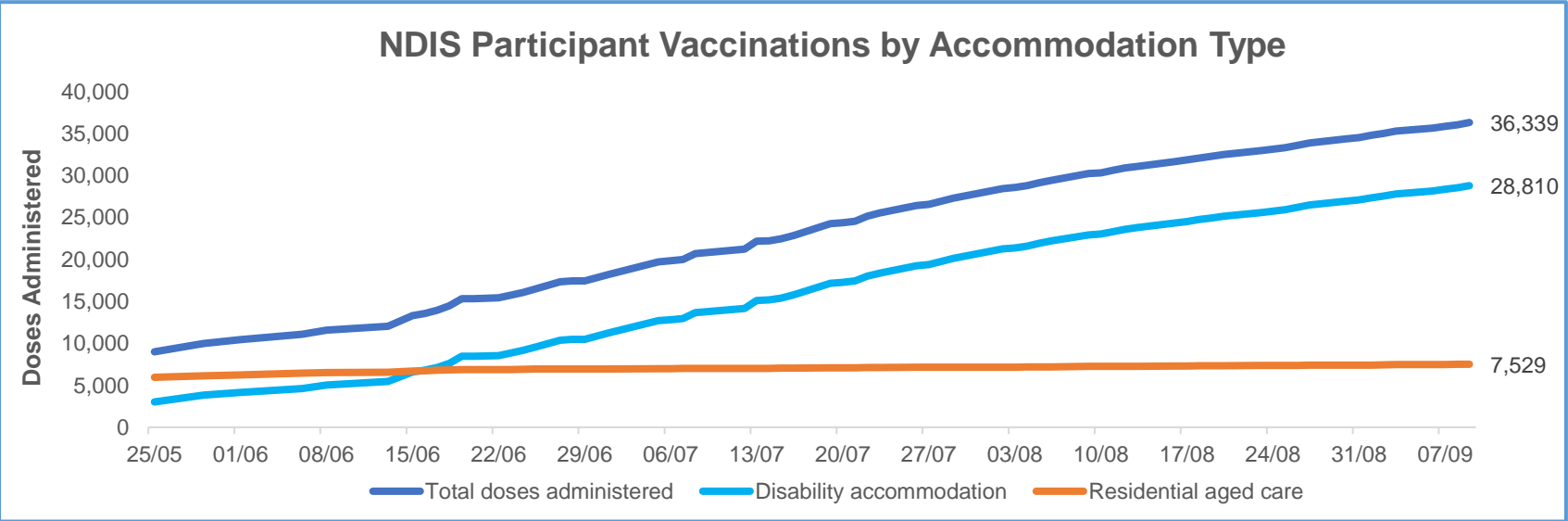
*Sourced from the Australian Immunisation Register. Includes all persons vaccinated at participating residential aged care, disability and related industry settings.

**State level breakdown indicates the residential location and may not align to the state in which the vaccination occurred.

Data as at:
09 September 2021*

Vaccination rate of people with disability and the disability workforce

Phase 1a – People with disability living in shared accommodation



| | Total people with at least one dose | People fully vaccinated | Total number of individuals in cohort | Total doses administered | % People with at least one dose | % People fully vaccinated |
|---|-------------------------------------|-------------------------|---------------------------------------|--------------------------|---------------------------------|---------------------------|
| NDIS participants living in shared accommodation ** | 19,636 | 16,703 | 27,293 | 36,339 | 71.9% | 61.2% |
| NDIS screened workers *** | 119,538 | 87,541 | 177,377 | 207,079 | 67.4% | 49.4% |

* Updates are available Monday to Friday on participants, and bi-weekly for workers, numbers may be up to four days old.

** Shared accommodation means two or more people with disability living in shared residential accommodation and NDIS participants living in Residential Aged Care accommodation as per the eligibility criteria of Phase 1a.

*** Total number of workers within the NDIS Commission Worker Screening database who have ever been successfully screened and linked to an NDIS registered provider or participant.

Source: Linkage between National Disability Insurance Agency data, NDIS Quality and Safeguards Commission data and the Australian Immunisation Register.



Residential aged care vaccination rollout

Residential aged care facilities status

100% Commonwealth facilities visited (2,569 planned sites)

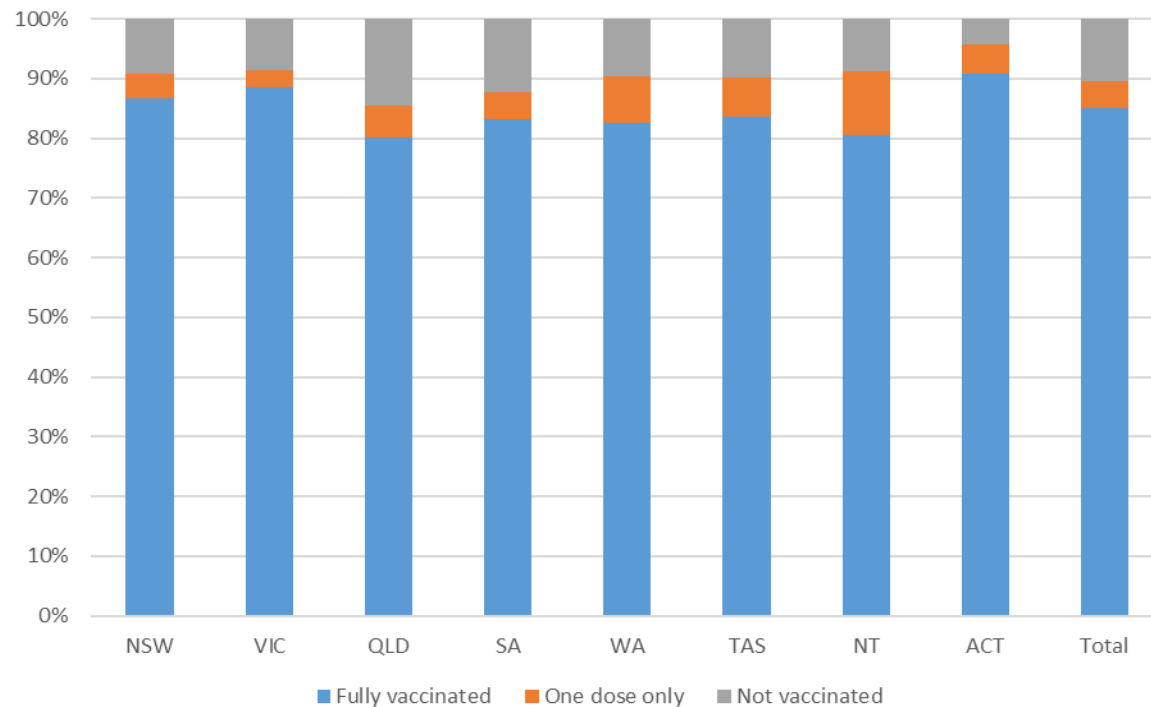
158,442 People fully vaccinated

89.5% Participation rate

Australia's COVID-19 Vaccine Roadmap

Data as at:
09 September 2021*

Aged care resident vaccinations



Aged care worker vaccinations

| Jurisdictions | Total workers with at least one dose | Workers fully vaccinated | % Workers with at least one dose | % Workers fully vaccinated |
|---------------|--------------------------------------|--------------------------|----------------------------------|----------------------------|
| NSW | 75,364 | 59,768 | 91.4% | 72.5% |
| VIC | 67,208 | 53,879 | 91.5% | 73.4% |
| QLD | 43,592 | 31,741 | 87.1% | 63.4% |
| SA | 24,150 | 18,869 | 88.7% | 69.3% |
| WA | 21,004 | 14,459 | 86.7% | 59.7% |
| TAS | 6,814 | 5,391 | 86.7% | 68.6% |
| NT | 810 | 735 | 90.0% | 81.7% |
| ACT | 2766 | 2072 | 92.8% | 69.5% |
| Total | 241,708 | 186,914 | 89.8% | 69.5% |

Source: My Aged Care Portal staff vaccination progress

**Resident vaccination information is reported manually by service providers

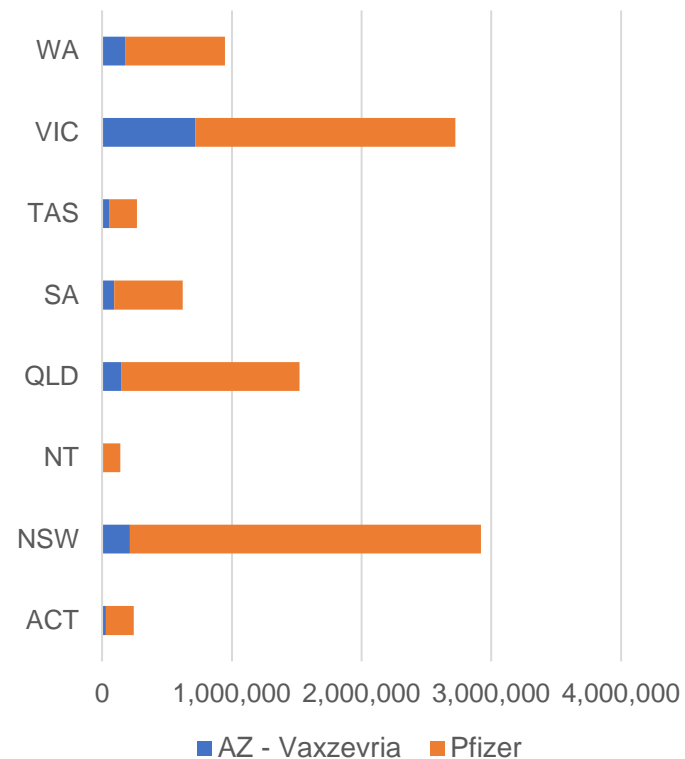
*Status updates are provided by facilities at least once per week. Reporting is updated Monday to Friday to encompass different facility updates being made on different days.

Data is sourced directly from Aged Care Service Providers and is not drawn or closely aligned with data from AIR due to inconsistencies and potential lags in uploading of records.

Data as at:
09 Sep 2021

Jurisdiction administered

Total vaccine doses administered in State and Territory clinics as at 09 September



9,385,634 total vaccine doses administered in State and Territory clinics as at 09 September
+ 157,855 recorded in the last 24 hours
+ 852,347 recorded in the last 7 days

NSW
2,921,541
 (+38,796 daily increase)

VIC
2,722,761
 (+64,549 daily increase)

QLD
1,522,811
 (+23,064 daily increase)

WA
947,732
 (+13,768 daily increase)

TAS
267,462
 (+3,863 daily increase)

SA
621,725
 (+8,809 daily increase)

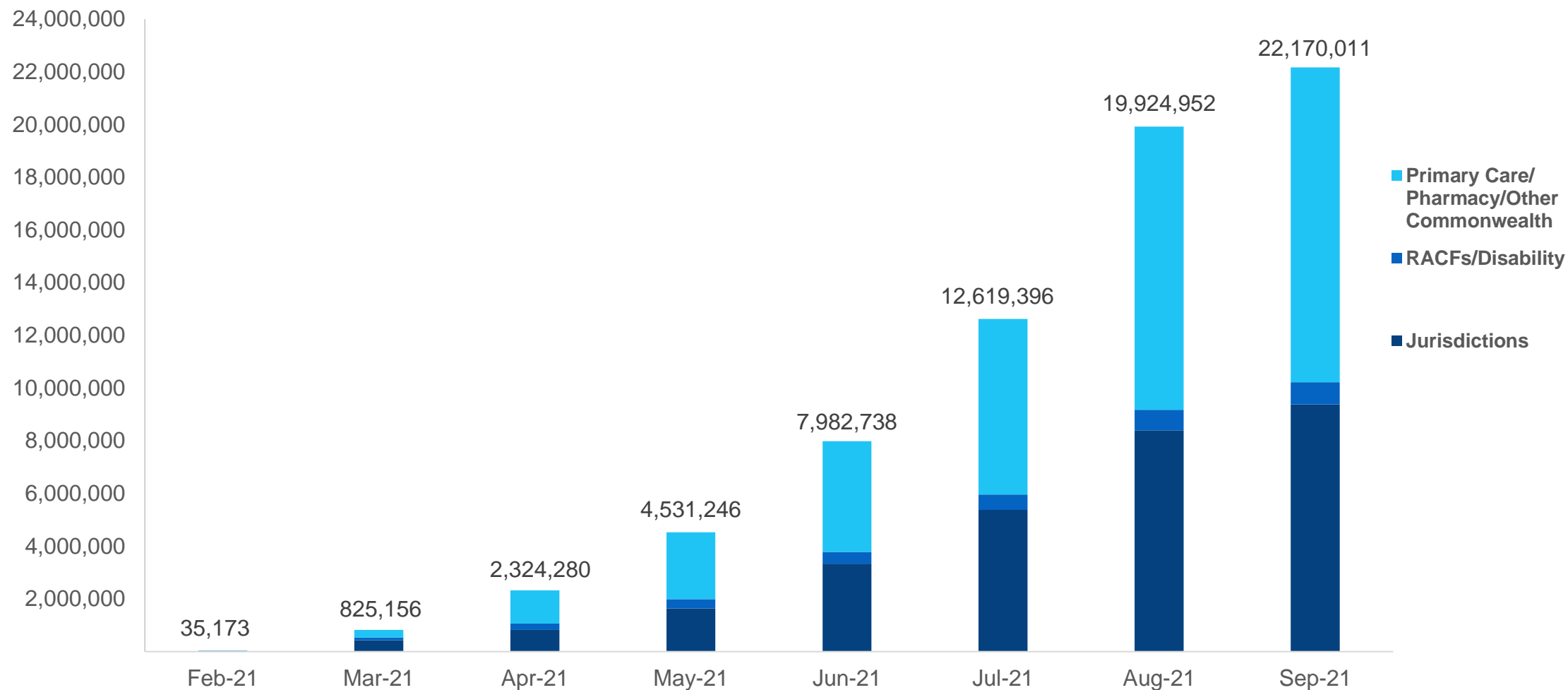
ACT
242,875
 (+3,482 daily increase)

NT
138,727
 (+1,524 daily increase)

*Sourced from the Australian Immunisation Register and self-reported data. Numbers are calculated as difference in daily cumulative reported numbers to allow for historical corrections in all self-reported data sources.

Cumulative doses administered by channel

Data as at:
09 Sep 2021



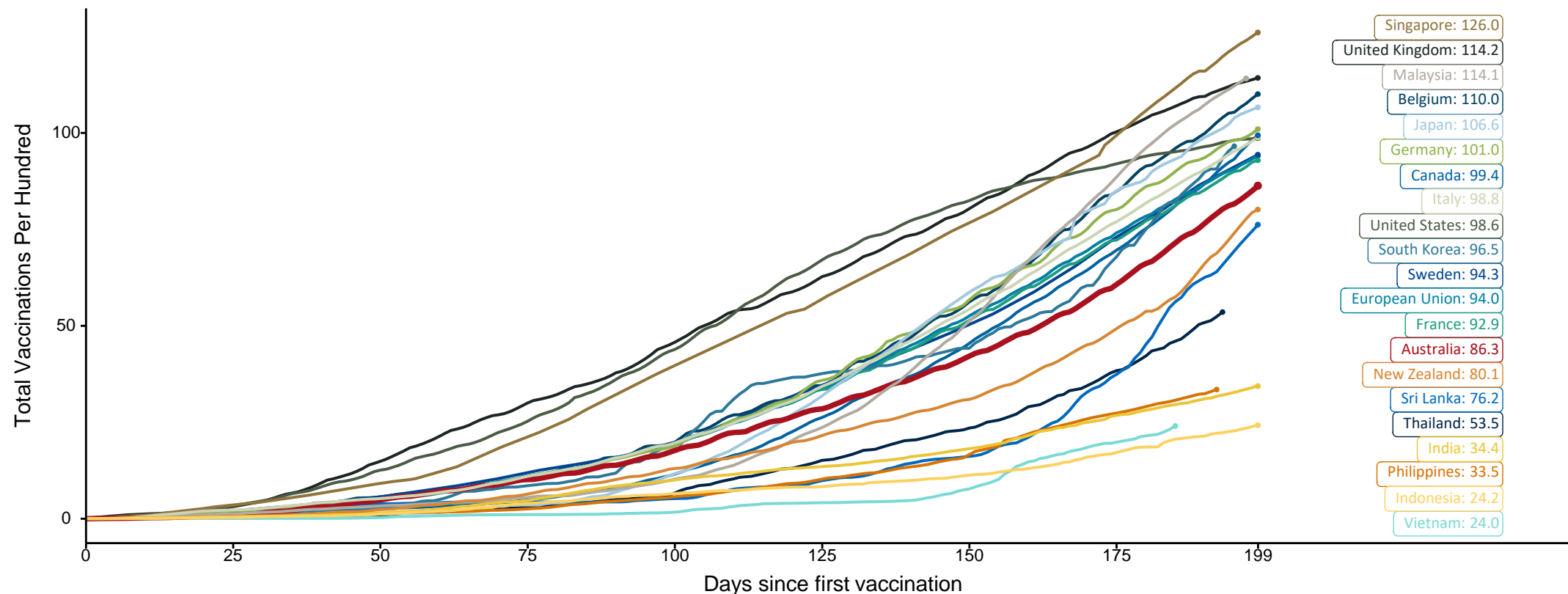
Source: Australian Immunisation Register

Doses at equivalent stages of rollout (Day 199)

Data as at:
09 Sep 2021

The x-axis is truncated at the length of Australia's vaccination program. Countries with intermittent reporting have had their doses per 100 imputed to Australia's current stage of rollout. Israel excluded as it is beyond scale of the graph

Cumulative doses administered (09 Sep): **22,170,011**

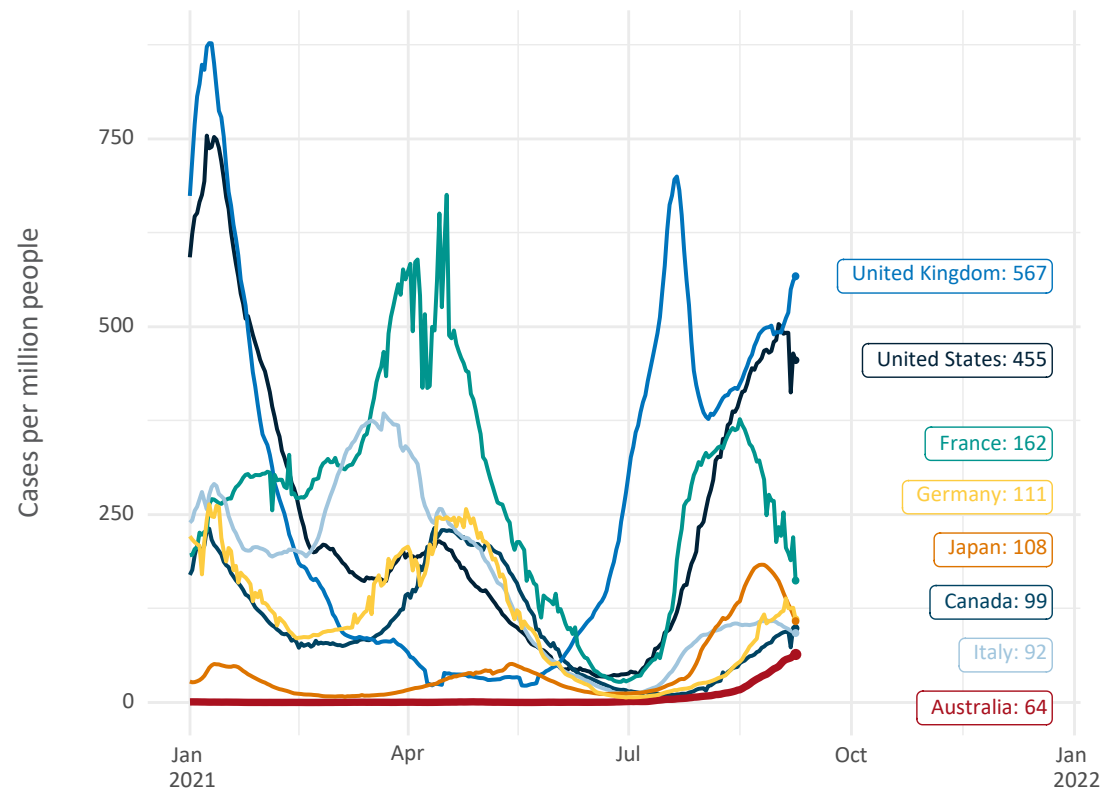


Source: Department of Health (Australia), Our World in Data (international)
Latest data: 09 September

International data – COVID-19

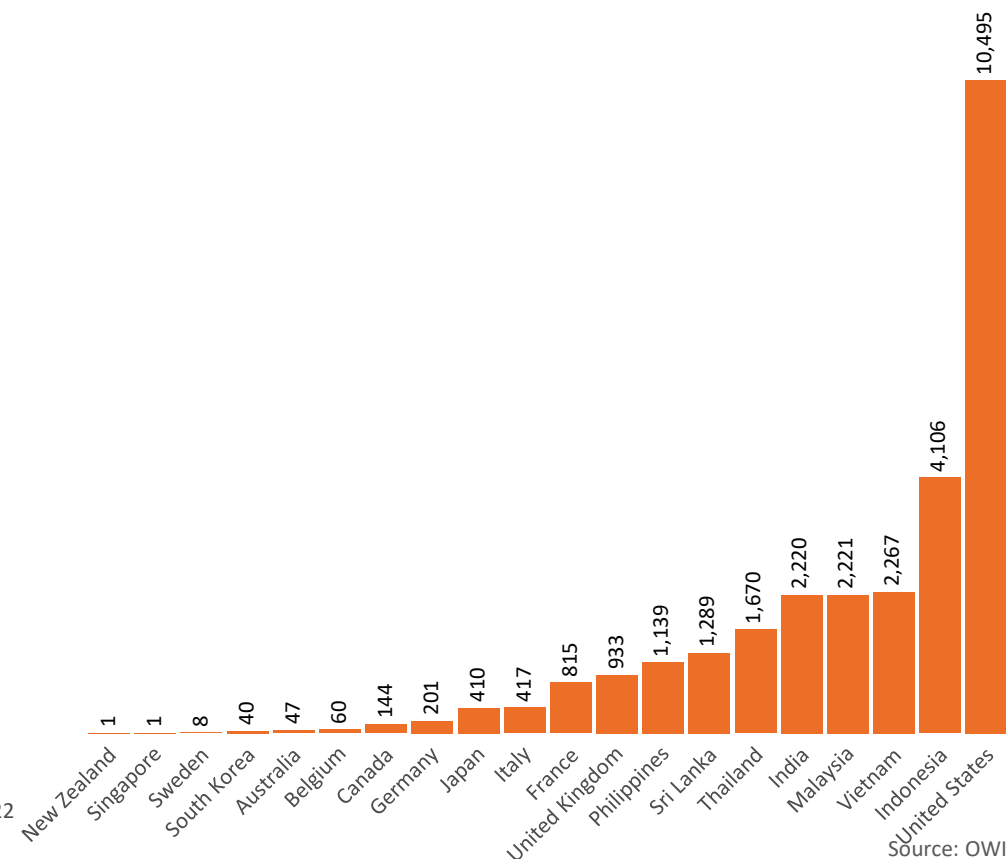
Data as at:
09 Sep 2021

New daily cases per million in 2021, Australia and G7 countries
Smoothed - 7 day average



Source: OWID
Data downloaded: 10 Sep 2021 08:47
Latest data: 08 Sep 2021

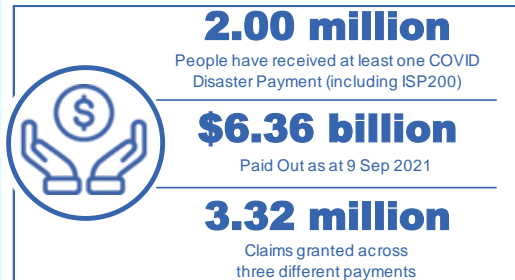
COVID-19 deaths in past 7 days - Australia and select countries



Source: OWID
Data downloaded: 10 Sep 2021 08:47
Latest data: 08 Sep 2021

Data as at midnight:
9 Sep 2021

Pandemic Response Payments



| | |
|---|---|
| COVID Disaster Payment: | 3.27 million claims received - 1.85 million individuals paid a total of \$6.18 billion. |
| \$200 Income Support Payment: | 192,000 claims received - 151,000 individuals paid a total of \$112.69 million. |
| Pandemic Leave Disaster Payment: | 56,000 claims received - 48,000 individuals paid a total of \$76.08 million. |



COVID Disaster Payment
assisting during a lockdown event in a Commonwealth hotspot.

Income Support Payment \$200
for income support recipients who lost at least 8 hours of work.

Pandemic Leave Disaster Payment
for those who have to self-isolate, quarantine or care.

For more information visit:
servicesaustralia.gov.au

COVID-19 DISASTER PAYMENTS

New South Wales

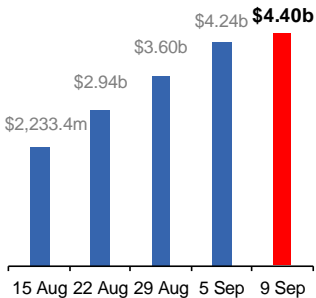
Active lockdown since 24 Jun

1.01m people have received at least one COVID Disaster Payment.

\$4.40b paid out as at 9 Sep 2021.

\$643m paid in initial and reoccurring payments in the week ending 5 Sep 2021.

Cumulative payments made by State since activation on 1 Jul 2021.



Victoria

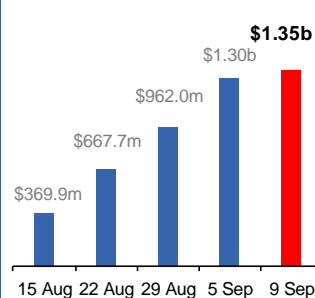
Active lockdown (#6) since 6 Aug

492,000 people have received at least one COVID Disaster Payment.

\$1.35b paid out as at 9 Sep 2021.

\$338m paid in initial and reoccurring payments in the week ending 5 Sep 2021.

Cumulative payments made by State since activation on 8 Jun 2021.



Australian Capital Territory

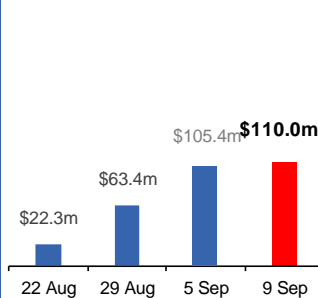
Active lockdown since 12 Aug

58,000 people have received at least one COVID Disaster Payment.

\$110.0m paid out as at 9 Sep 2021.

\$42m paid in initial and reoccurring payments in the week ending 5 Sep 2021.

Cumulative payments made by State since activation on 20 Aug 2021.



Northern Territory

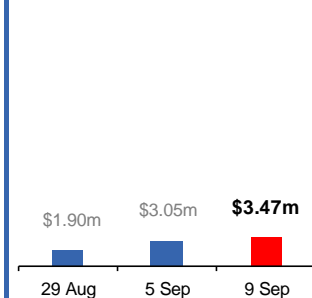
Lockdown from 18 – 20 Jul
Claiming period ends 13 Sep

5,339 people have received at least one COVID Disaster Payment.

\$3.47m paid out as at 9 Sep 2021.

\$1.14m paid in initial payments in the week ending 5 Sep 2021.

Cumulative payments made by State since activation on 25 Aug 2021.



Queensland

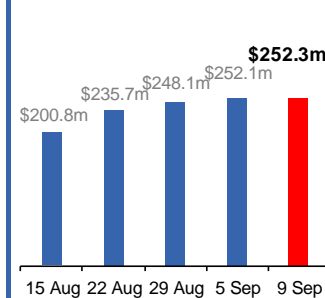
Lockdown from 31 Jul – 11 Aug
Claiming period ended 28 Aug

196,000 people have received at least one COVID Disaster Payment.

\$252.3m paid out as at 9 Sep 2021.

\$4m paid in initial and reoccurring payments in the week ending 5 Sep 2021.

Cumulative payments made by State since activation on 7 Aug 2021.



South Australia

Lockdown from 21 – 27 Jul
Claiming period ended 17 Aug

86,000 people have received at least one COVID Disaster Payment.

\$48.2m paid out as at 9 Sep 2021.

\$27,000 paid in initial payments in the week ending 5 Sep 2021.

Cumulative payments made by State since activation on 28 Jul 2021.

