



**Australian Government**  
**Operation COVID Shield**

# COVID-19 Vaccine Roll-out

01 September 2021

Data as at:  
31 Aug 2021

## Total vaccine doses



**19,697,498** total vaccine  
doses administered nationally as at 31 August  
**+334,832** recorded in the last 24 hours



**12,293,802**

people have had at least one  
dose

**59.6%**

of people over the age of 16  
have had at least one dose



**7,369,320**

people are fully vaccinated

**35.7%**

of people over the age of 16 are  
fully vaccinated

**NSW**  
**6,990,810**  
(+121,170 daily  
increase)

**VIC**  
**5,039,494**  
(+105,018 daily  
increase)

**QLD**  
**3,491,117**  
(+46,359 daily  
increase)

**WA**  
**1,774,772**  
(+24,545 daily  
increase)

**TAS**  
**454,505**  
(+6,345 daily  
increase)

**SA**  
**1,267,807**  
(+16,904 daily  
increase)

**ACT**  
**466,621**  
(+12,046 daily  
increase)

**NT**  
**212,372**  
(+2,445 daily  
increase)

\*Administration state breakdown indicates state in which a vaccine was administered

\*\*Overall dose count includes instances of more than two doses per person in a small number of cases.

Source: Australian Immunisation Register

Data as at:  
31 Aug 2021

**160,661**

doses administered to  
persons residing in  
other territories or with  
missing residential  
information

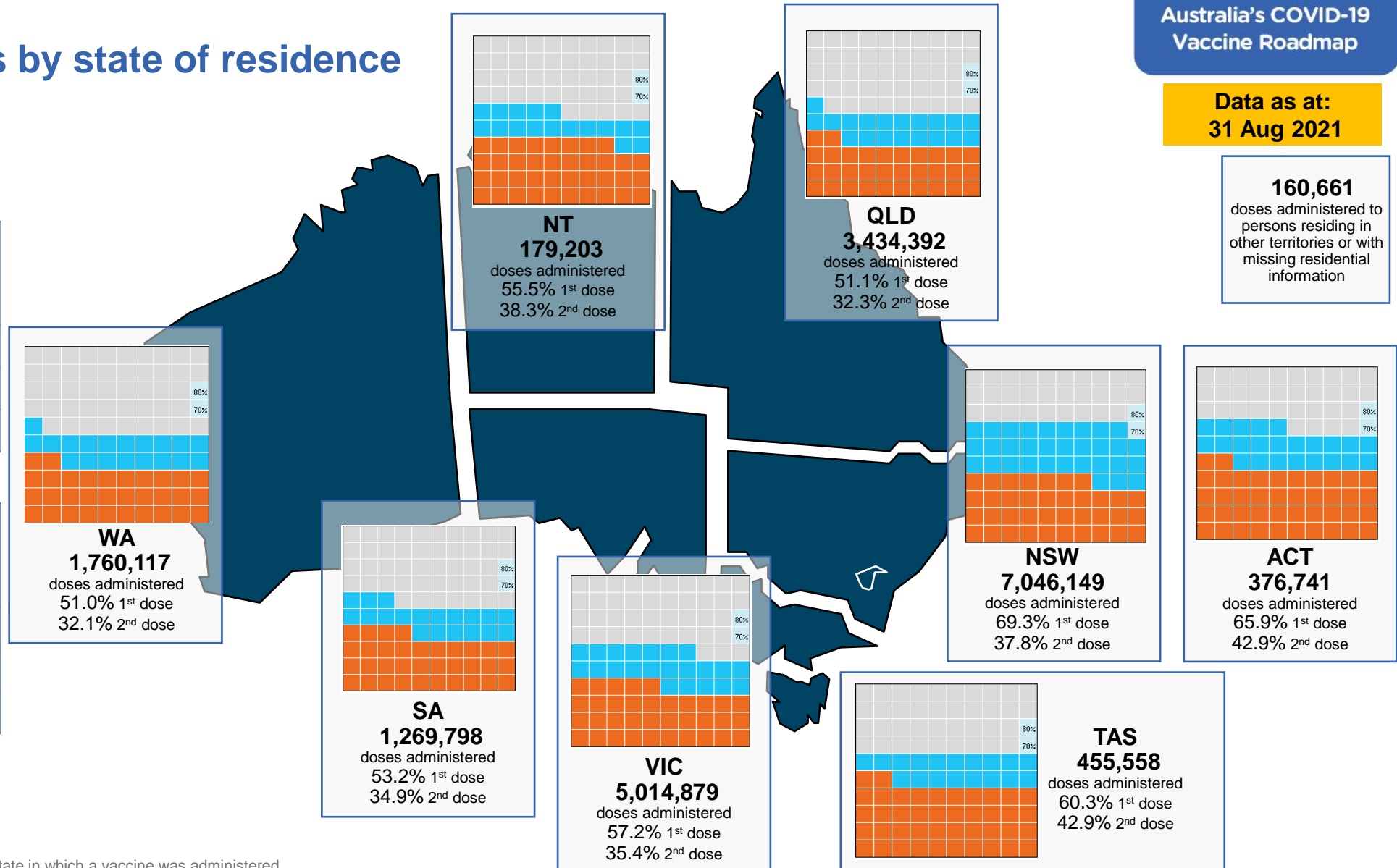
## Vaccinations by state of residence

### First doses

Age Today	4 weeks ago	8 weeks ago
16+	59.6%	42.5%
50+	79.3%	67.5%
70+	87.8%	80.8%

### Fully vaccinated

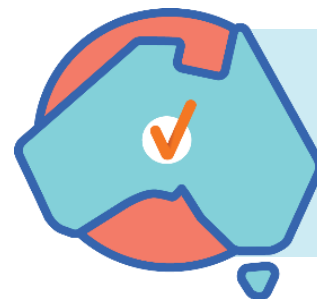
Age Today	4 weeks ago	8 weeks ago
16+	35.7%	20.8%
50+	52.9%	29.2%
70+	63.8%	44.8%



\*Residential state may differ from the state in which a vaccine was administered

## Commonwealth and Jurisdiction vaccine doses administered

Data as at:  
31 Aug 2021



**19,697,498** total vaccine  
doses administered nationally as at 31 August

**+ 334,832** recorded in the last 24 hours

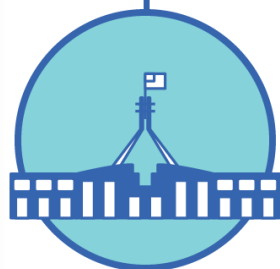


**8,266,040**

doses administered by state  
and territory facilities

**+ 153,903**

recorded in the last 24 hours



**11,431,458**

doses administered by  
commonwealth facilities

**+ 180,929**

recorded in the last 24 hours

**10,667,759** total vaccine doses  
administered in primary care settings

**763,699** total vaccine doses  
administered in aged care and disability  
settings

NSW	Jurisdictions	Commonwealth
Cumulative	2,545,762	4,445,048
Daily increase	42,371	78,799

VIC	Jurisdictions	Commonwealth
Cumulative	2,395,003	2,644,491
Daily increase	61,113	43,905

QLD	Jurisdictions	Commonwealth
Cumulative	1,346,866	2,144,251
Daily increase	16,678	29,681

WA	Jurisdictions	Commonwealth
Cumulative	838,715	936,057
Daily increase	12,489	12,056

TAS	Jurisdictions	Commonwealth
Cumulative	241,967	212,538
Daily increase	3,674	2,671

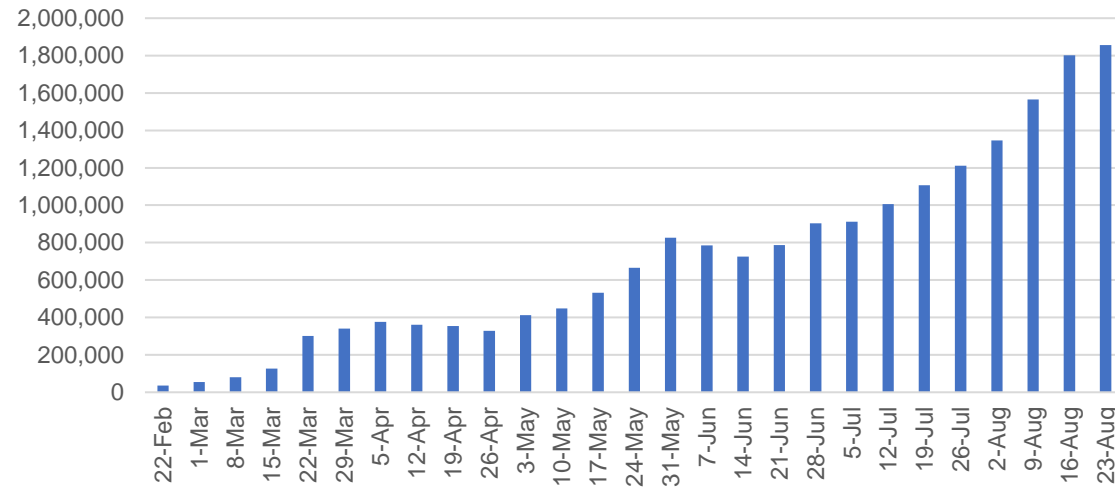
SA	Jurisdictions	Commonwealth
Cumulative	557,003	710,804
Daily increase	7,472	9,432

ACT	Jurisdictions	Commonwealth
Cumulative	213,908	252,713
Daily increase	8,878	3,168

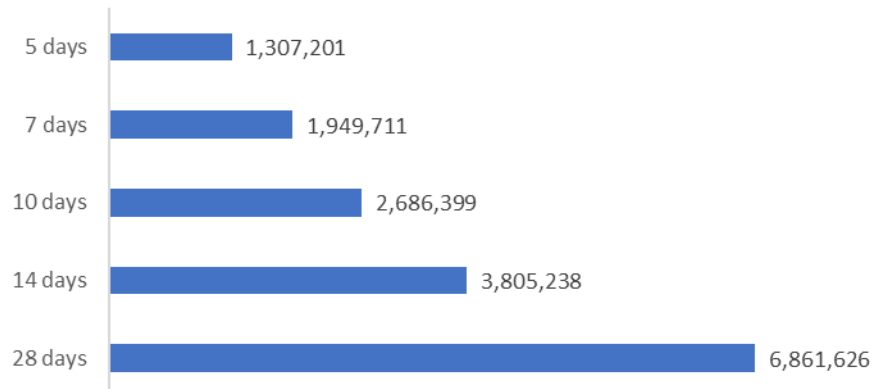
NT	Jurisdictions	Commonwealth
Cumulative	126,816	85,556
Daily increase	1,228	1,217

# Vaccine milestone charts

Jabs in arms by week



Doses reported

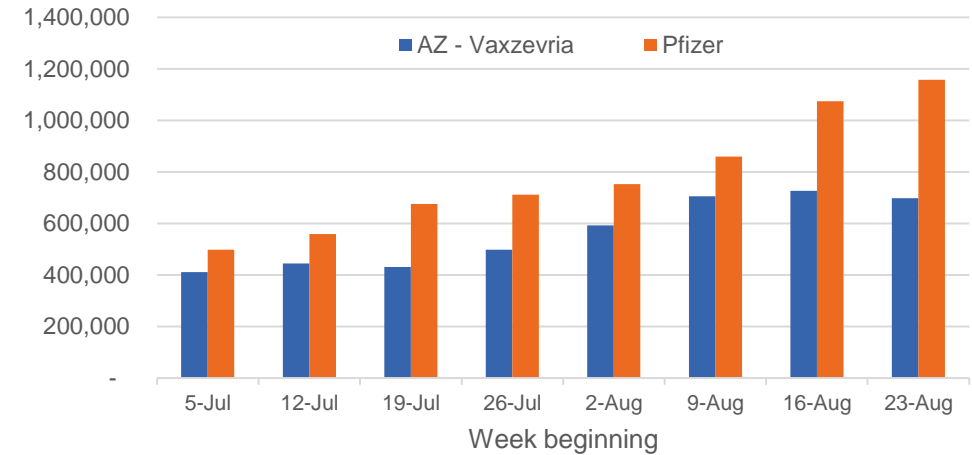


\*Sourced from the A

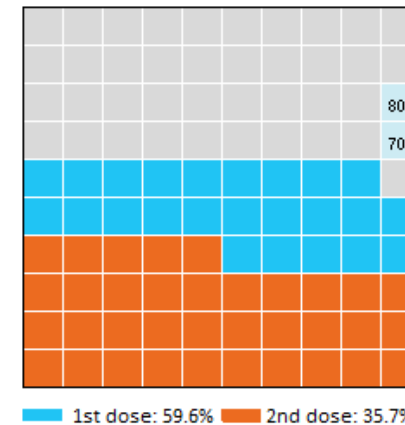
Data as at:  
31 Aug 2021

Australia's COVID-19  
Vaccine Roadmap

Doses by administration week and vaccine type



Eligible population percentage coverage



\*Each square represents 1% of the national population.  
Squares are filled as milestones are achieved.

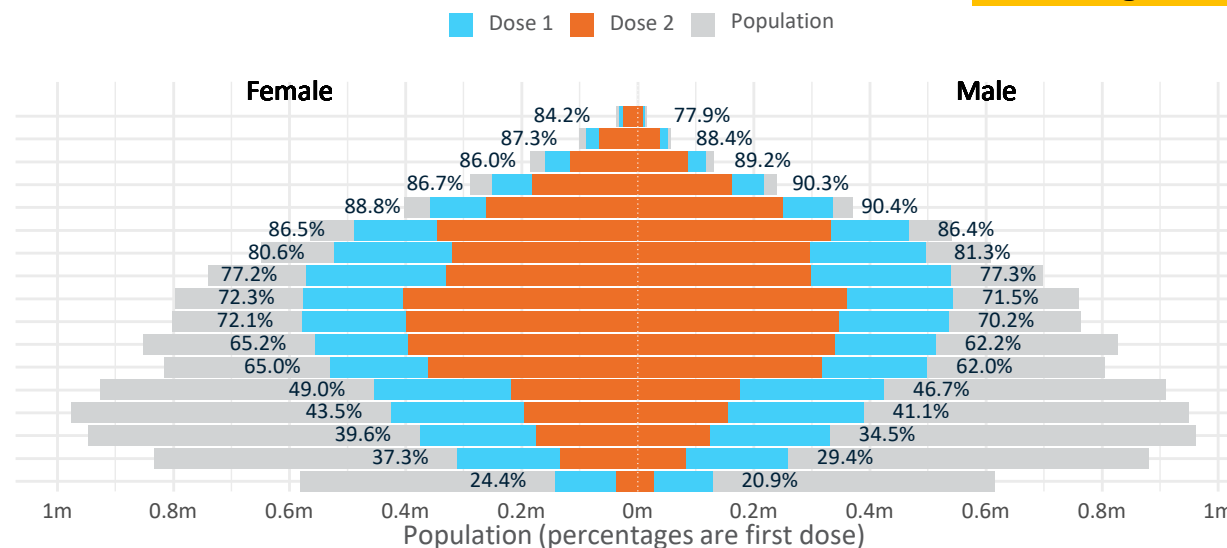
# Doses by age and sex

First and second doses by age and sex, using ABS age brackets

Australia's COVID-19  
Vaccine Roadmap

Data as at:  
31 Aug 2021

Age	Dose 1	Dose 2
95+	43,663 (82.5%)	33,757 (63.8%)
90-94	139,107 (87.8%)	104,226 (65.8%)
85-89	276,285 (87.4%)	202,031 (63.9%)
80-84	467,066 (88.4%)	343,589 (65.0%)
75-79	693,748 (89.7%)	510,507 (66.0%)
70-74	956,208 (86.5%)	679,101 (61.5%)
65-69	1,020,048 (81.1%)	616,771 (49.0%)
60-64	1,111,011 (77.3%)	628,921 (43.8%)
55-59	1,119,775 (72.0%)	764,315 (49.1%)
50-54	1,114,180 (71.2%)	743,882 (47.5%)
45-49	1,069,164 (63.8%)	735,172 (43.8%)
40-44	1,030,320 (63.6%)	678,384 (41.9%)
35-39	880,431 (48.0%)	394,076 (21.5%)
30-34	818,413 (42.5%)	353,000 (18.4%)
25-29	711,559 (37.3%)	299,592 (15.7%)
20-24	572,465 (33.4%)	217,053 (12.7%)
16-19	270,359 (22.6%)	64,943 (5.4%)



	AUS	ACT	NSW	NT	QLD	SA	TAS	VIC	WA
16 and over - dose 1	12,293,802	226,837	4,547,478	105,753	2,101,333	766,308	265,388	3,094,149	1,078,993
16 and over - dose 2	7,369,320	147,551	2,484,199	73,067	1,327,631	502,057	189,026	1,913,967	678,964
16 and over - population	20,619,959*	344,037	6,565,651	190,571	4,112,707	1,440,400	440,172	5,407,574	2,114,978
16 and over % with dose 1	59.62%	65.93%	69.26%	55.49%	51.09%	53.20%	60.29%	57.22%	51.02%
16 and over % with dose 2	35.74%	42.89%	37.84%	38.34%	32.28%	34.86%	42.94%	35.39%	32.10%
50 and over - dose 1	6,941,091	119,188	2,347,662	43,328	1,306,611	502,146	174,373	1,760,643	644,683
50 and over - dose 2	4,627,100	83,365	1,534,366	30,768	870,163	324,282	126,381	1,195,237	437,882
50 and over - population	8,749,703	127,802	2,807,793	62,280	1,758,855	674,384	220,036	2,211,211	885,370
50 and over % with dose 1	79.33%	93.26%	83.61%	69.57%	74.29%	74.46%	79.25%	79.62%	72.82%
50 and over % with dose 2	52.88%	65.23%	54.65%	49.40%	49.47%	48.09%	57.44%	54.05%	49.46%
70 and over - dose 1	2,576,077	39,945	868,563	9,544	496,698	203,419	68,492	637,674	233,079
70 and over - dose 2	1,873,211	30,775	624,434	7,262	365,253	140,814	52,673	467,779	171,293
70 and over - population	2,934,706	39,946	962,606	12,343	577,767	240,514	77,155	743,519	280,281
70 and over % with dose 1	87.78%	>95%	90.23%	77.32%	85.97%	84.58%	88.77%	85.76%	83.16%
70 and over % with dose 2	63.83%	77.04%	64.87%	58.83%	63.22%	58.55%	68.27%	62.91%	61.11%

\*National population will not equal sum of listed jurisdictions due to a small number of people counted in national population residing in some 'other' territories

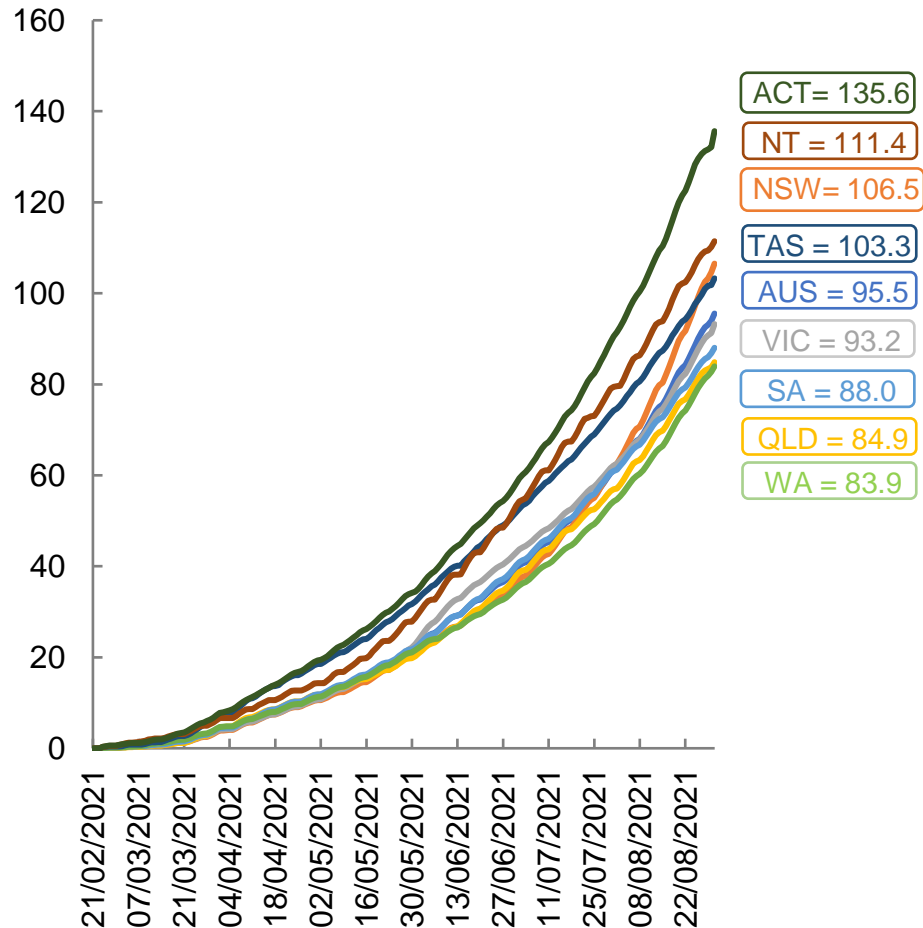
Doses sourced from Australian Immunisation Register, population from ABS ERP June 2020

# Vaccinations by location

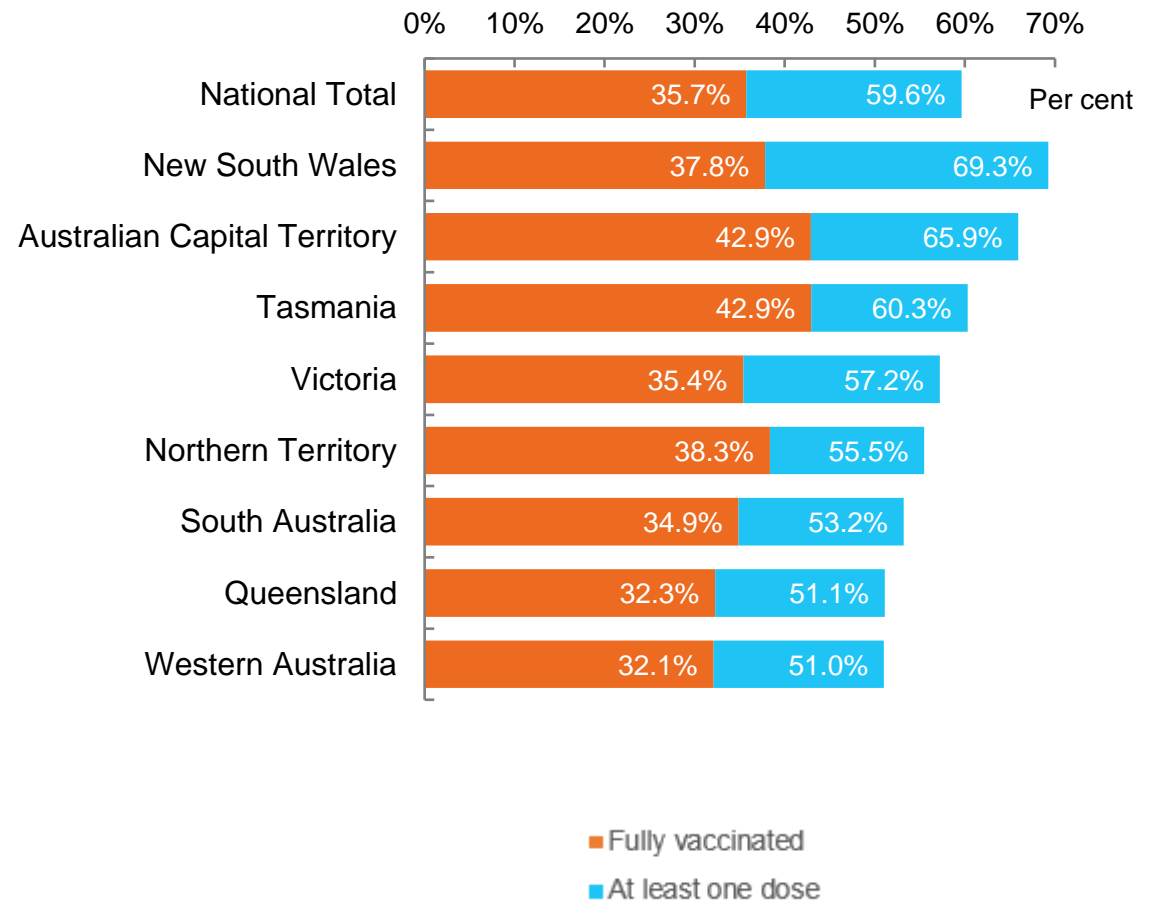
Data as at:  
31 Aug 2021

Australia's COVID-19  
Vaccine Roadmap

Cumulative total doses administered vs state populations\*



First and Second Doses by state of residence



\*Not an indication of percentage vaccinated, numbers will exceed 100 due to multiple doses required per person of the population



# Aboriginal and Torres Strait Islander peoples

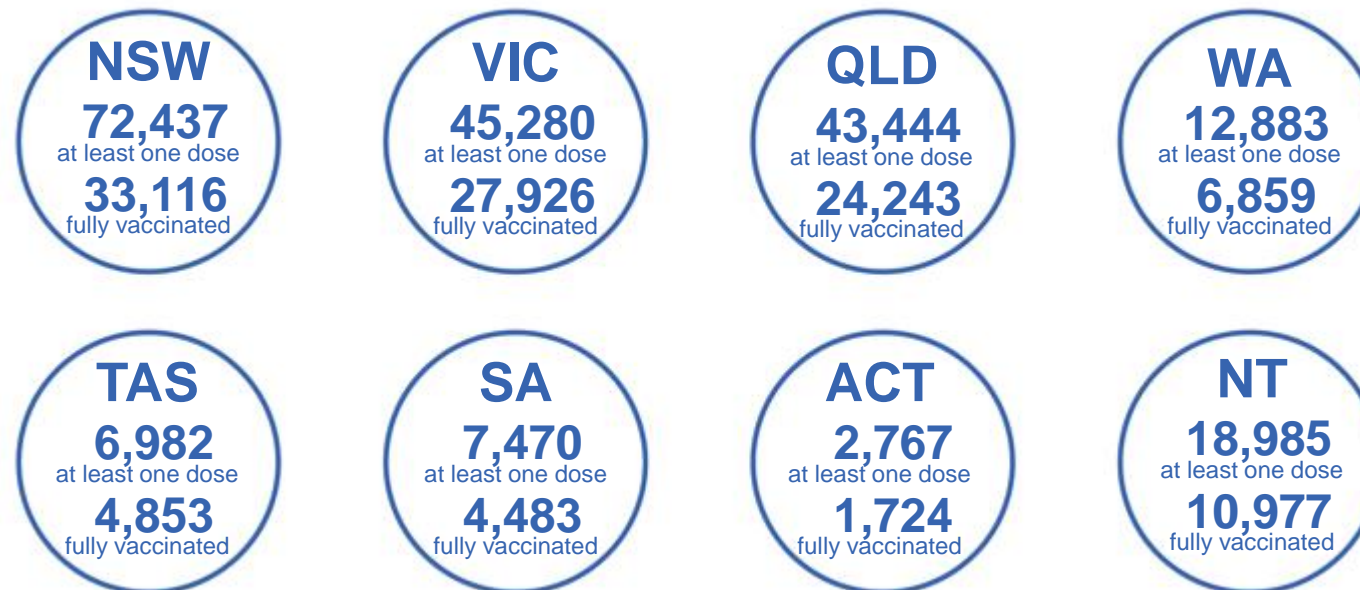
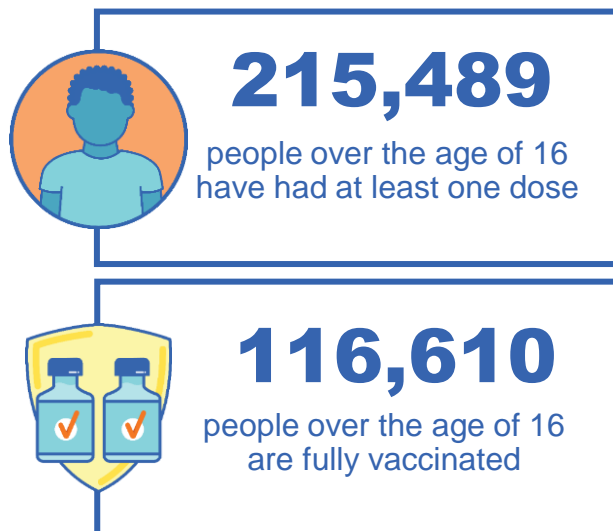
## Number of people vaccinated

Data as at:  
29 Aug 2021  
Updated weekly  
Data reconciliation underway

Australia's COVID-19  
Vaccine Roadmap

### 162 Aboriginal community controlled health services (ACCHS)

0#	45	26	38	11	3	21	18
ACT	NSW	NT	QLD	SA	TAS	VIC	WA



**5,241** people with at least one dose  
**2,429** people fully vaccinated

residing in other territories or with missing residential information

Source: Australian Immunisation Register

\*Identifying as Aboriginal and Torres Strait Islander is optional and the estimated population may be under reported.

\*\*Includes all Aboriginal and Torres Strait Islander peoples who have received a vaccination, not limited to those administered in an ACCHS setting

\*\*\*Updated weekly.

#ACCHS in the ACT are currently operating as a Commonwealth Vaccine Clinics so not included to avoid double counting



Data as at:  
31 Aug 2021

# Commonwealth primary care



## Primary care vaccine administration sites

<b>5,347</b>	<b>137</b>	<b>162</b>	<b>2,925</b>
GPs	CVCs	ACCHS	Pharmacies



**10,667,759** total vaccine doses administered primary care settings as at 31 August  
**+ 175,316** recorded in the last 24 hours

## Primary care vaccinations by provider type

	Doses administered	Daily increase	7 day increase
General Practice* includes other Commonwealth	10,339,633	158,755	1,090,496
Pharmacy	328,126	16,561	120,989



**54,139** doses administered to persons residing in other territories or with missing residential information

\*General practice includes Commonwealth Vaccination Clinics, Aboriginal Community Health Centres, Royal Flying Doctor Service and other Commonwealth vaccination facilities

Source: Australian Immunisation Register

Data as at:  
31 Aug 2021

# Commonwealth aged care and disability doses administered



People vaccinated in aged care  
and residential disability facilities

**448,021**

People with a first dose

**314,533**

People fully vaccinated

Residential aged care  
facilities

**2,569**

Sites visited for first doses

**2,568**

Sites visited for second doses



**763,699**

(+ 5,613 last 24 hours)

Total vaccine doses administered in aged care  
and disability facilities as at 31 August

Number of doses administered as part of the Commonwealth aged and disability care rollout

**NSW**  
**343,060**

(+3,280 daily  
increase)

**VIC**  
**152,369**

(+970 daily  
increase)

**QLD**  
**115,228**

(+767 daily  
increase)

**WA**  
**53,647**

(+26 daily  
increase)

**TAS**  
**15,613**

(+42 daily  
increase)

**SA**  
**48,654**

(+142 daily  
increase)

**ACT**  
**9,180**

(+94 daily  
increase)

**NT**  
**5,245**

(+8 daily  
increase)

**20,703**

doses administered to persons  
residing in other territories or with  
missing residential information

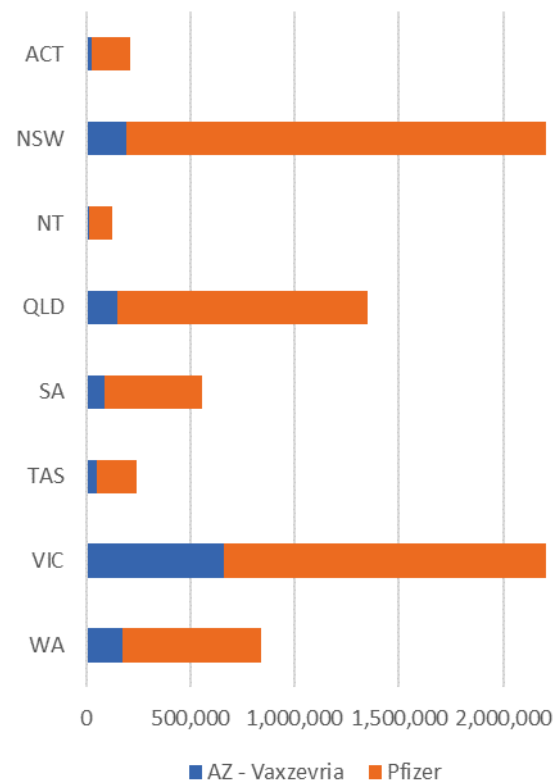
\*Sourced from the Australian Immunisation Register. Includes all persons vaccinated at participating residential aged care, disability and related industry settings.

\*\*State level breakdown indicates the residential location and may not align to the state in which the vaccination occurred.

Data as at:  
31 Aug 2021

# Jurisdiction administered

Total vaccine doses administered in State and Territory clinics as at 31 August



**8,266,040** total vaccine doses administered  
in State and Territory clinics as at 31 August  
+ **153,903** recorded in the last 24 hours  
+ **877,878** recorded in the last 7 days

**NSW**  
**2,545,762**  
(+42,371 daily  
increase)

**VIC**  
**2,395,003**  
(+61,113 daily  
increase)

**QLD**  
**1,346,866**  
(+16,678 daily  
increase)

**WA**  
**838,715**  
(+12,489 daily  
increase)

**TAS**  
**241,967**  
(+3,674 daily  
increase)

**SA**  
**557,003**  
(+7,472 daily  
increase)

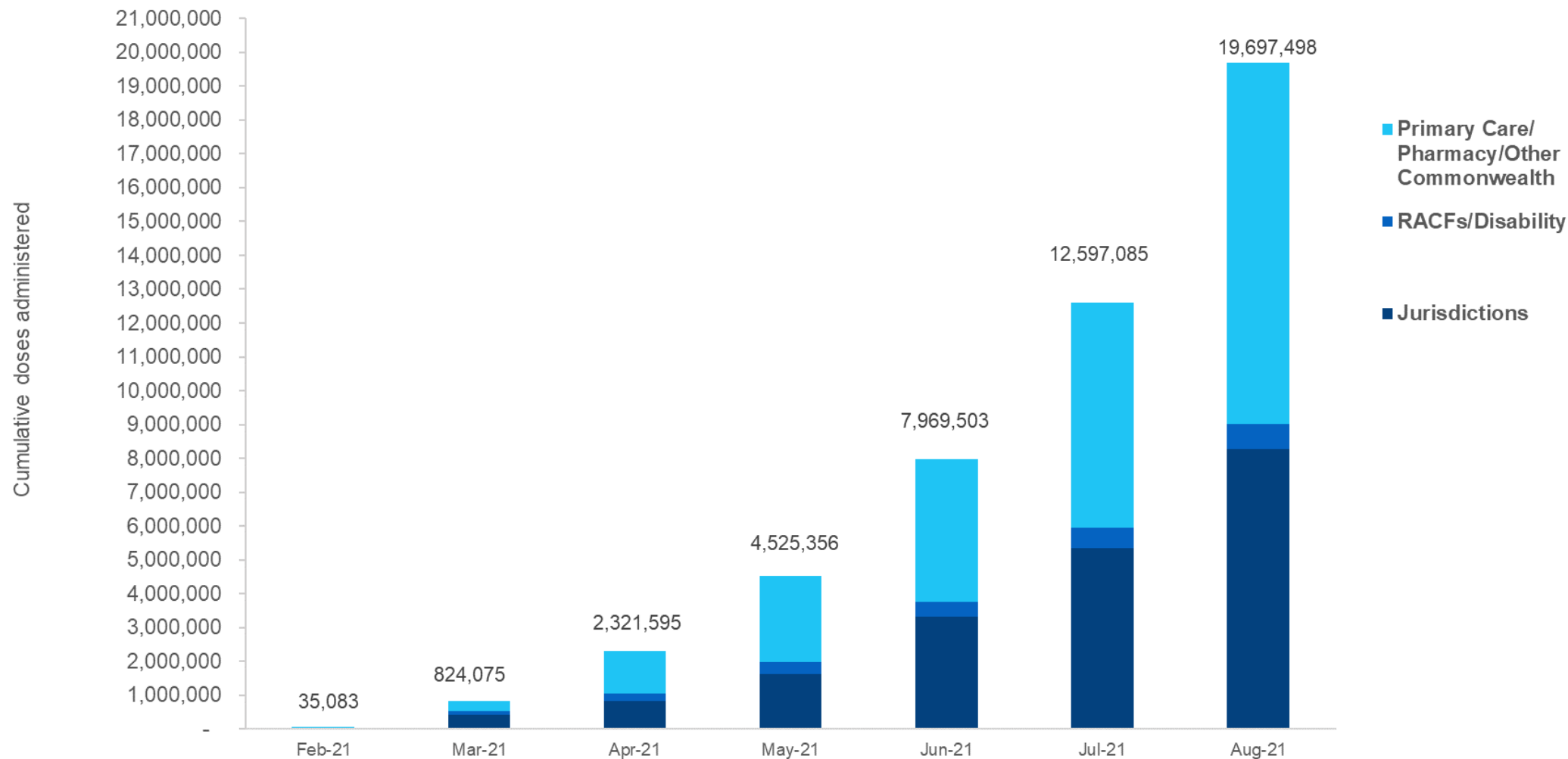
**ACT**  
**213,908**  
(+8,878 daily  
increase)

**NT**  
**126,816**  
(+1,228 daily  
increase)

\*Sourced from the Australian Immunisation Register and self-reported data. Numbers are calculated as difference in daily cumulative reported numbers to allow for historical corrections in all self-reported data sources.

## Cumulative doses administered by channel

Data as at:  
31 Aug 2021



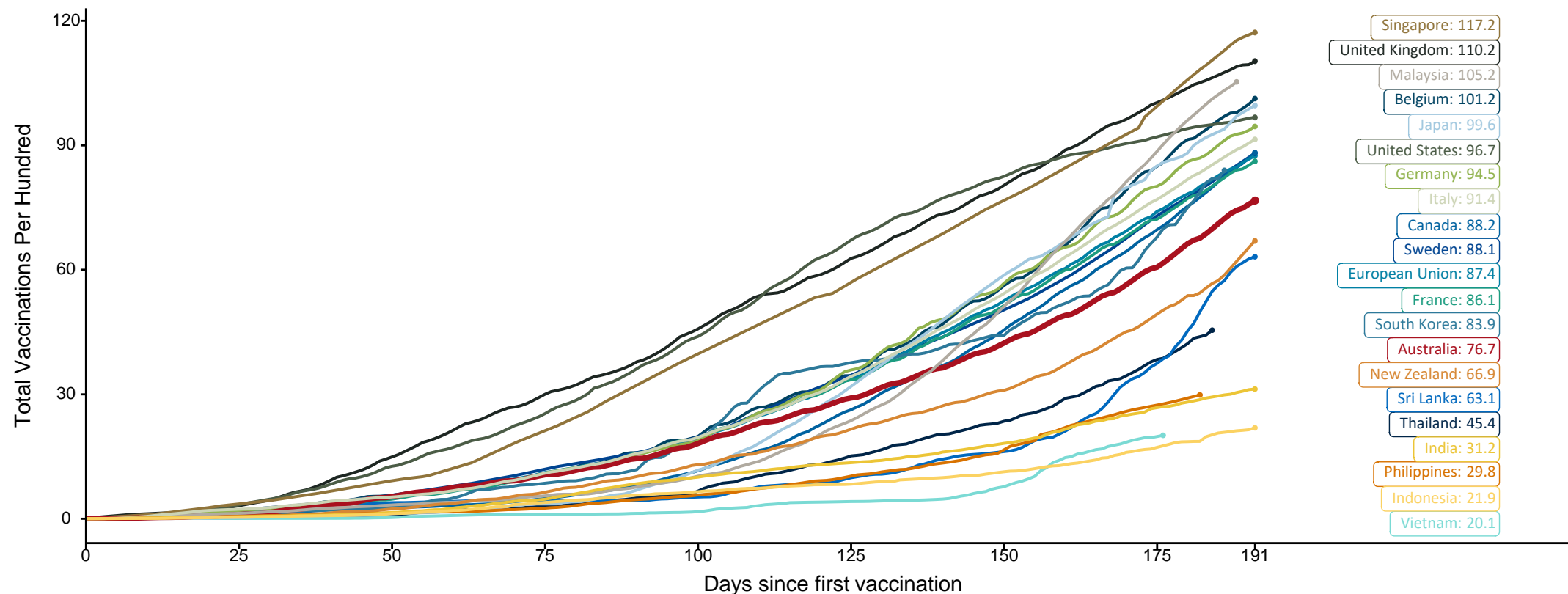
Source: Australian Immunisation Register

# Doses at equivalent stages of rollout (Day 191)

Data as at:  
31 Aug 2021

The x-axis is truncated at the length of Australia's vaccination program. Countries with intermittent reporting have had their doses per 100 imputed to Australia's current stage of rollout. Israel excluded as it is beyond scale of the graph

Cumulative doses administered (31 Aug): **19,697,498**

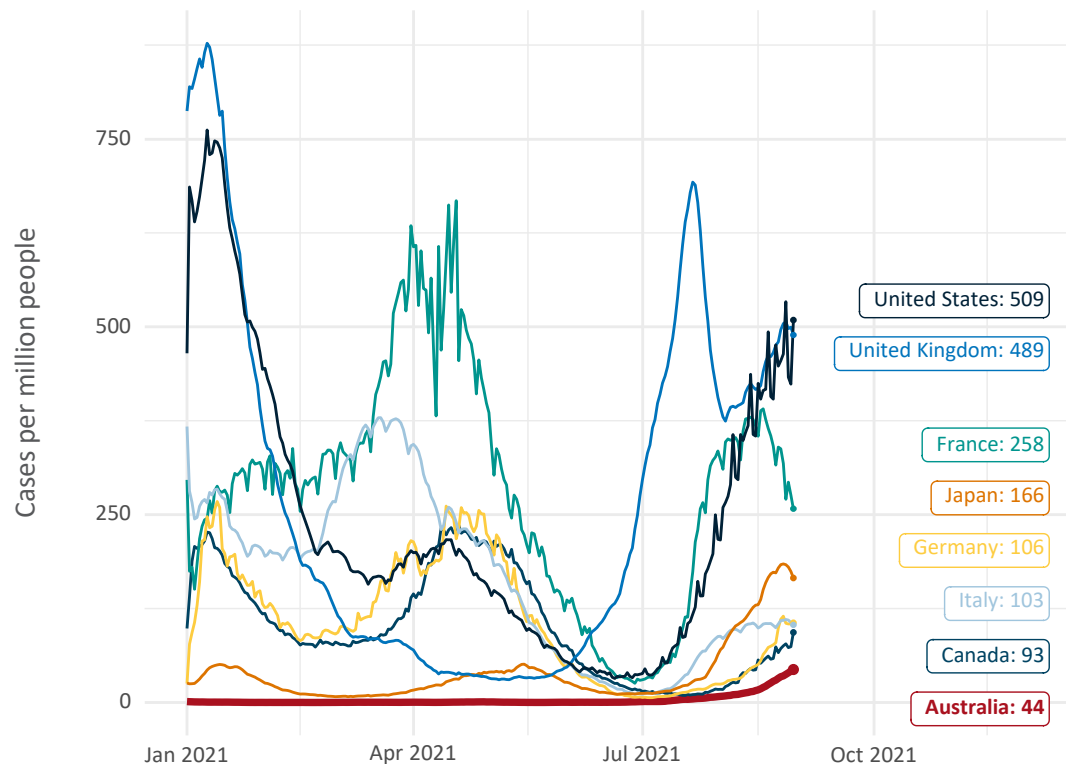


Source: Department of Health (Australia), Our World in Data (international)  
Latest data: 31 August

# International data – COVID-19

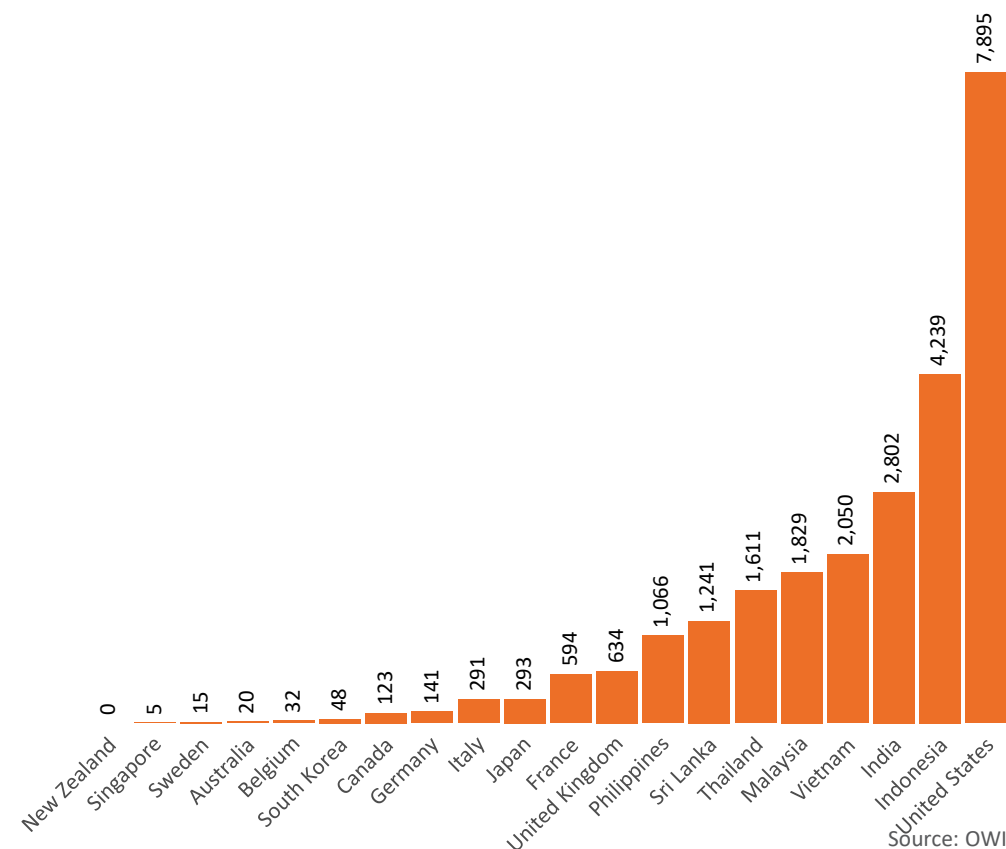
Data as at:  
31 Aug 2021

New daily cases per million in 2021, Australia and G7 countries  
Smoothed - 7 day average



Source: OWID  
Data downloaded: 01 Sep 2021 08:38  
Latest data: 30 Aug 2021

COVID-19 deaths in past 7 days - Australia and select countries

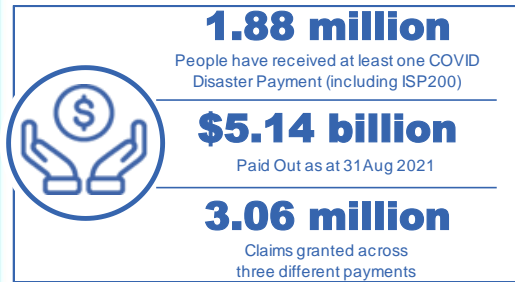


Source: OWID  
Data downloaded: 01 Sep 2021 08:38  
Latest data: 30 Aug 2021



Data as at midnight:  
31 Aug 2021

# Pandemic Response Payments



<b>COVID Disaster Payment:</b>	3.03 million claims received - 1.74 million individuals paid a total of \$4.99 billion.
<b>\$200 Income Support Payment:</b>	175,000 claims received - 137,000 individuals paid a total of \$84.64 million.
<b>Pandemic Leave Disaster Payment:</b>	49,000 claims received - 42,000 individuals paid a total of \$66.80 million.



**THREE PAYMENTS AVAILABLE**

**COVID Disaster Payment**  
assisting during a lockdown event in a Commonwealth hotspot.

**Income Support Payment \$200**  
for income support recipients who lost at least 8 hours of work.

**Pandemic Leave Disaster Payment**  
for those who have to self-isolate, quarantine or care.

For more information visit:  
[servicesaustralia.gov.au](https://servicesaustralia.gov.au)

## COVID-19 DISASTER PAYMENTS

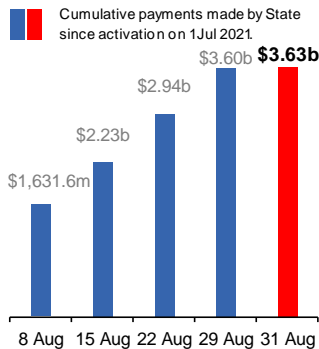
### New South Wales

Active lockdown n since 24 Jun

**973,000 people have received at least one COVID Disaster Payment.**

**\$3.63b paid out as at 31 Aug 2021.**

**\$657m paid in initial and reoccurring payments in the week ending 29 Aug 2021.**



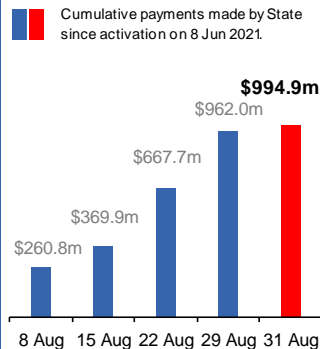
### Victoria

Active lockdown n (#6) since 6 Aug

**434,000 people have received at least one COVID Disaster Payment.**

**\$994.9m paid out as at 31 Aug 2021.**

**\$294m paid in initial and reoccurring payments in the week ending 29 Aug 2021.**



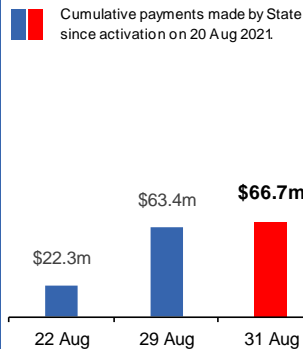
### Australian Capital Territory

Active lockdown n since 12 Aug

**51,000 people have received at least one COVID Disaster Payment.**

**\$66.7m paid out as at 31 Aug 2021.**

**\$41m paid in initial and reoccurring payments in the week ending 29 Aug 2021.**



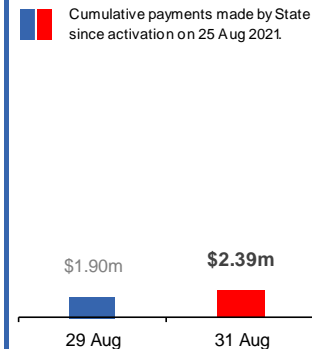
### Northern Territory

Lockdown n from 18 – 20 Jul  
Claiming period ends 13 Sep

**3,681 people have received at least one COVID Disaster Payment.**

**\$2.39m paid out as at 31 Aug 2021.**

**\$1.91m paid in initial payments in the week ending 29 Aug 2021.**



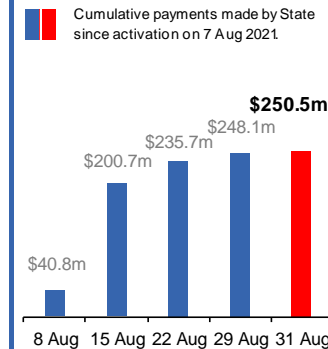
### Queensland

Lockdown n from 31 Jul – 11 Aug  
Claiming period ended 28 Aug

**193,000 people have received at least one COVID Disaster Payment.**

**\$250.5m paid out as at 31 Aug 2021.**

**\$12m paid in initial and reoccurring payments in the week ending 29 Aug 2021.**



### South Australia

Lockdown n from 21 – 27 Jul  
Claiming period ended 17 Aug

**86,000 people have received at least one COVID Disaster Payment.**

**\$48.2m paid out as at 31 Aug 2021.**

**\$43,000 paid in initial payments in the week ending 29 Aug 2021.**

