



**CURRENT STATUS OF CONFIRMED CASES**

**92,179** **1,196** **19,375**

Total cases      Total deaths      Active cases

**295**



ACT	NSW	NT	QLD	SA	TAS	VIC	WA
2	233	0	0	0	0	60	0

**1,530**



ACT	NSW	NT	QLD	SA	TAS	VIC	WA
12	1,244	4	13	0	0	257	0

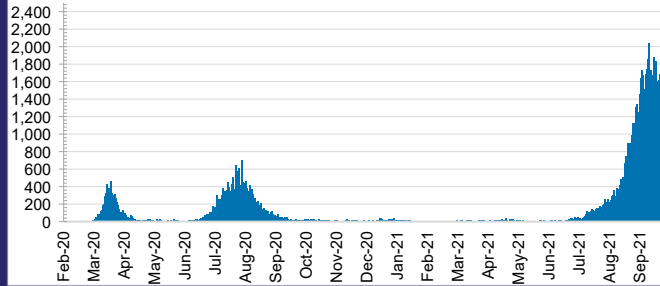
**36,475,743**



**0.3% POSITIVE**

ACT	NSW	NT	QLD
453,124	16,313,079	384,708	4,289,739
POSITIVE	POSITIVE	POSITIVE	POSITIVE
0.2%	0.3%	0.1%	0.0%
SA	TAS	VIC	WA
2,218,246	354,568	10,717,838	1,744,441
POSITIVE	POSITIVE	POSITIVE	POSITIVE
0.0%	0.1%	0.3%	0.1%

**DAILY NUMBER OF REPORTED CASES**

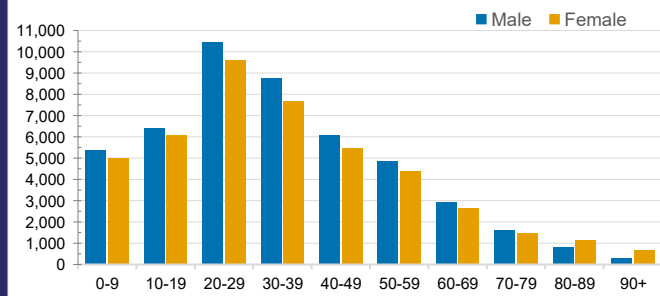


**CASES IN AGED CARE SERVICES**

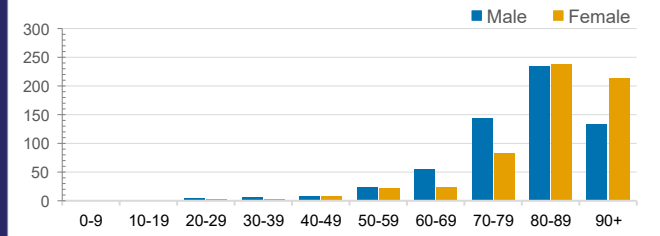
Confirmed Cases	Australia	ACT	NSW	NT	QLD	SA	TAS	VIC	WA
Residential Care Recipients	2400 [1404] (715)	0	389 [68] (58)	0	1 (1)	0	1 (1)	2009 [1336] (655)	0
In Home Care Recipients	102 [73] (9)	0	31 [13] (1)	0	8 [8]	1 [1]	5 [3] (2)	56 [48] (5)	1 (1)

Cases in care recipients [recovered] (deaths)

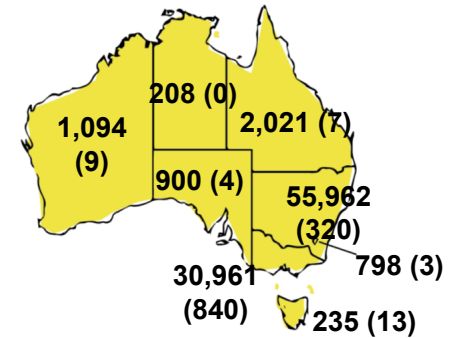
**CASES BY AGE GROUP AND SEX**



**DEATHS BY AGE GROUP AND SEX**

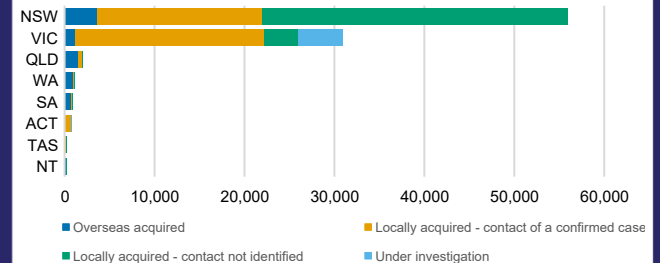


**CASES (DEATHS) BY STATE AND TERRITORIES**



**CASES BY SOURCE OF INFECTION**

Australia (% of all confirmed cases)



**PUBLIC HEALTH RESPONSE MEASURE**

Proportion of total cases under investigation

