



CURRENT STATUS OF CONFIRMED CASES



291



ACT	NSW	NT	QLD	SA	TAS	VIC	WA
2	234	0	0	0	0	55	0

1,468



ACT	NSW	NT	QLD	SA	TAS	VIC	WA
8	1,236	1	19	0	0	204	0

35,624,140

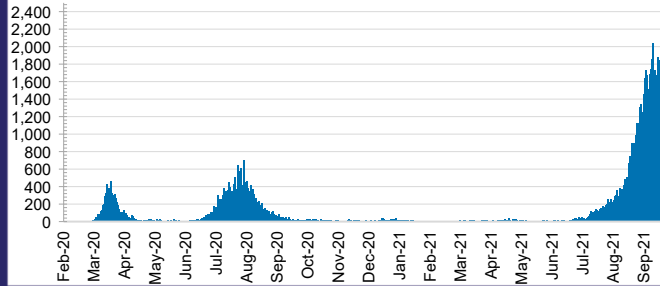


0.2% POSITIVE

**TOTAL TESTS
CONDUCTED**

ACT	NSW	NT	QLD
440,199	15,793,747	377,687	4,245,730
POSITIVE	POSITIVE	POSITIVE	POSITIVE
0.2%	0.3%	0.1%	0.0%
SA	TAS	VIC	WA
2,198,736	350,442	10,494,857	1,722,742
POSITIVE	POSITIVE	POSITIVE	POSITIVE
0.0%	0.1%	0.3%	0.1%

DAILY NUMBER OF REPORTED CASES

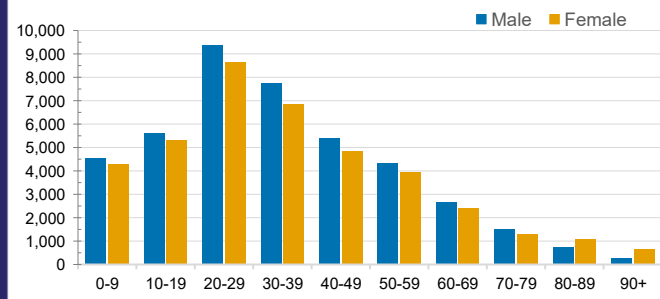


CASES IN AGED CARE SERVICES

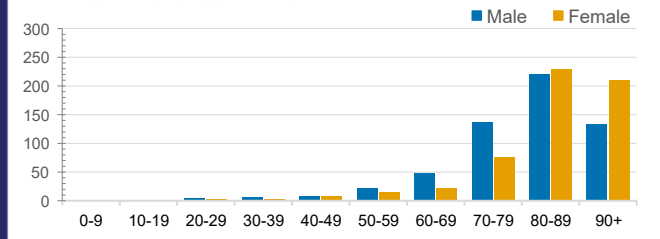
Confirmed Cases	Australia	ACT	NSW	NT	QLD	SA	TAS	VIC	WA
Residential Care Recipients	2338 [1404]	0	345 [68]	0	1 (1)	0	1 (1)	1991 [1336]	0
In Home Care Recipients	91 [73]	0	21 [13]	0	8 [8]	1 [1]	5 [3]	55 [48]	1 (1)

Cases in care recipients [recovered] (deaths)

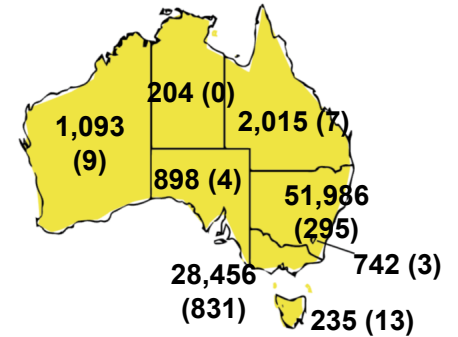
CASES BY AGE GROUP AND SEX



DEATHS BY AGE GROUP AND SEX

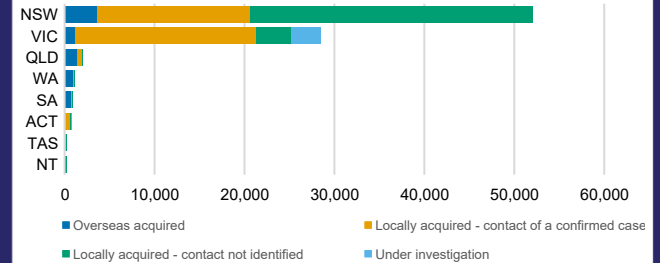


CASES (DEATHS) BY STATE AND TERRITORIES



CASES BY SOURCE OF INFECTION

Australia (% of all confirmed cases)



PUBLIC HEALTH RESPONSE MEASURE

Proportion of total cases under investigation

