



**CURRENT STATUS OF CONFIRMED CASES**



**280**



ACT	NSW	NT	QLD	SA	TAS	VIC	WA
1	234	0	1	0	0	44	0

**1,441**



ACT	NSW	NT	QLD	SA	TAS	VIC	WA
7	1,241	1	19	0	0	173	0

**34,688,089**

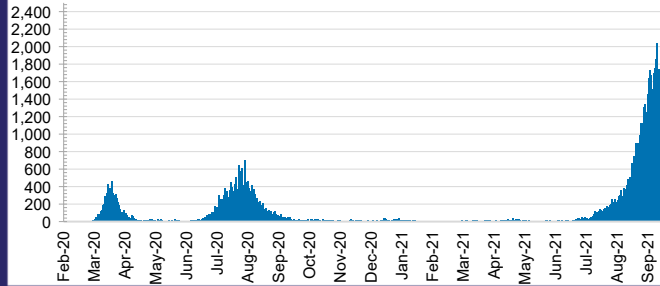


**0.2% POSITIVE**

**TOTAL TESTS  
CONDUCTED**

ACT	NSW	NT	QLD
427,388	15,196,487	370,889	4,194,758
POSITIVE	POSITIVE	POSITIVE	POSITIVE
0.2%	0.3%	0.1%	0.0%
SA	TAS	VIC	WA
2,178,742	347,156	10,257,179	1,715,490
POSITIVE	POSITIVE	POSITIVE	POSITIVE
0.0%	0.1%	0.3%	0.1%

**DAILY NUMBER OF REPORTED CASES**

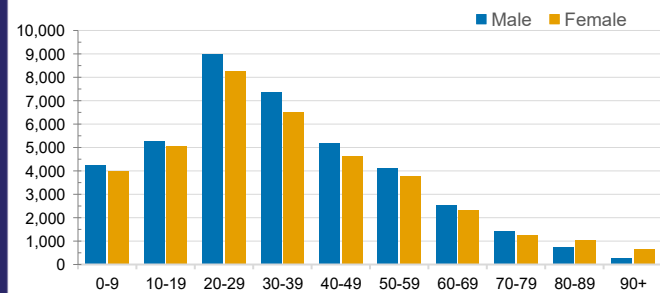


**CASES IN AGED CARE SERVICES**

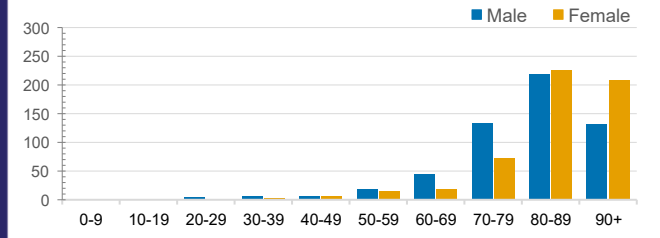
Confirmed Cases	Australia	ACT	NSW	NT	QLD	SA	TAS	VIC	WA
Residential Care Recipients	2323 [1396]	0	330 [60]	0	1 (1)	0	1 (1)	1991 [1336]	0
In Home Care Recipients	91 [73]	0	21 [13]	0	8 [8]	1 [1]	5 [3]	55 [48]	1 (1)

Cases in care recipients [recovered] (deaths)

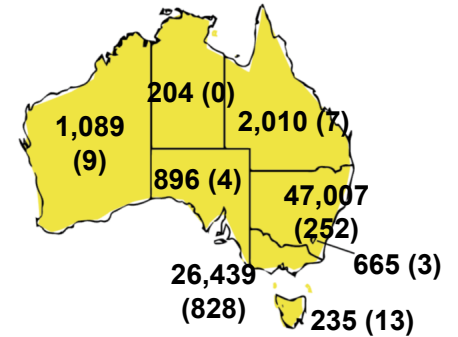
**CASES BY AGE GROUP AND SEX**



**DEATHS BY AGE GROUP AND SEX**

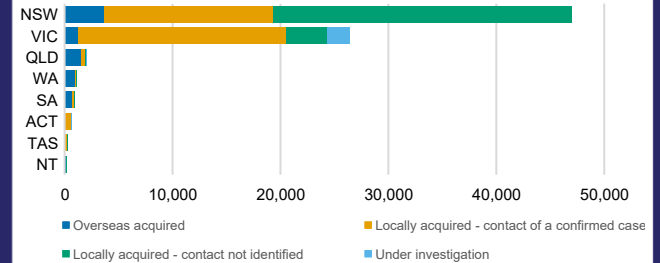


**CASES (DEATHS) BY STATE AND TERRITORIES**



**CASES BY SOURCE OF INFECTION**

Australia (% of all confirmed cases)



**PUBLIC HEALTH RESPONSE MEASURE**

Proportion of total cases under investigation

