



**CURRENT STATUS OF CONFIRMED CASES**



**279**



ACT	NSW	NT	QLD	SA	TAS	VIC	WA
2	231	0	1	0	0	45	0

**1,440**



ACT	NSW	NT	QLD	SA	TAS	VIC	WA
10	1,253	0	19	0	0	158	0

**34,464,347**

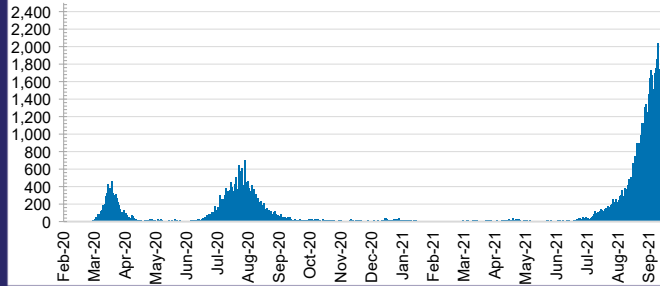


**0.2% POSITIVE**

**TOTAL TESTS  
CONDUCTED**

ACT	NSW	NT	QLD
426,060	15,058,989	369,071	4,178,946
POSITIVE	POSITIVE	POSITIVE	POSITIVE
0.2%	0.3%	0.1%	0.0%
SA	TAS	VIC	WA
2,172,107	345,924	10,202,530	1,710,720
POSITIVE	POSITIVE	POSITIVE	POSITIVE
0.0%	0.1%	0.3%	0.1%

**DAILY NUMBER OF REPORTED CASES**

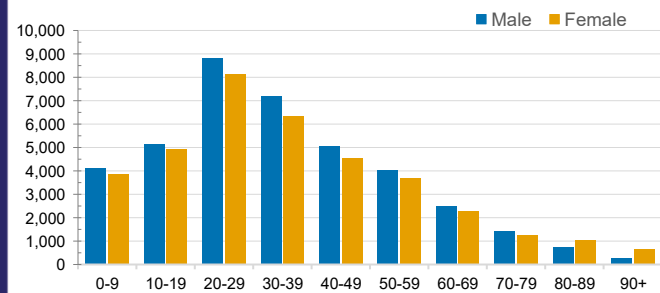


**CASES IN AGED CARE SERVICES**

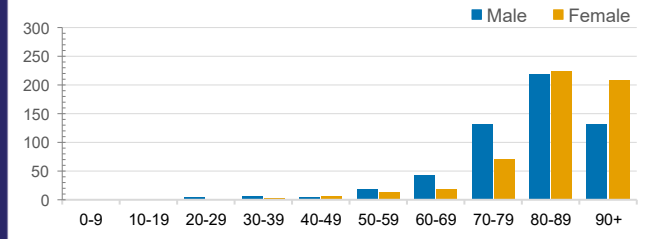
Confirmed Cases	Australia	ACT	NSW	NT	QLD	SA	TAS	VIC	WA
Residential Care Recipients	2318 [1389] (705)	0	325 [53] (48)	0	1 (1)	0	1 (1)	1991 [1336] (655)	0
In Home Care Recipients	91 [73] (9)	0	21 [13] (1)	0	8 [8]	1 [1]	5 [3] (2)	55 [48] (5)	1 (1)

Cases in care recipients [recovered] (deaths)

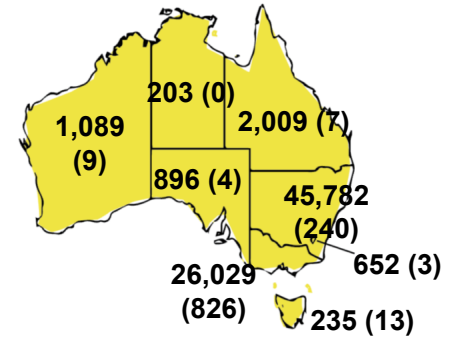
**CASES BY AGE GROUP AND SEX**



**DEATHS BY AGE GROUP AND SEX**

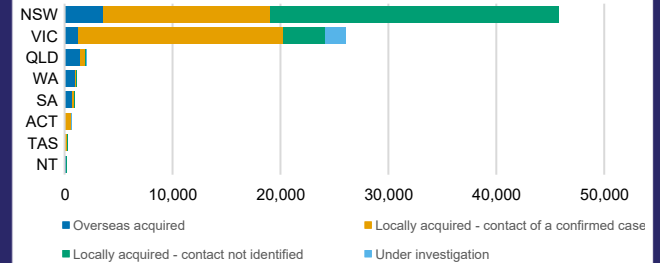


**CASES (DEATHS) BY STATE AND TERRITORIES**



**CASES BY SOURCE OF INFECTION**

Australia (% of all confirmed cases)



**PUBLIC HEALTH RESPONSE MEASURE**

Proportion of total cases under investigation

