



CURRENT STATUS OF CONFIRMED CASES



264



ACT	NSW	NT	QLD	SA	TAS	VIC	WA
3	222	0	1	0	0	38	0

1,374



ACT	NSW	NT	QLD	SA	TAS	VIC	WA
9	1,189	0	18	1	0	157	0

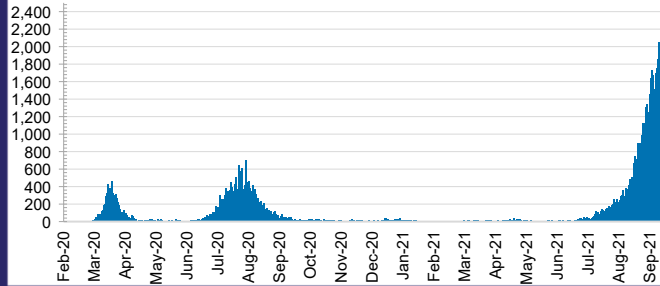
34,277,304



0.2% POSITIVE

ACT	NSW	NT	QLD
422,419	14,944,905	367,712	4,165,550
POSITIVE	POSITIVE	POSITIVE	POSITIVE
0.1%	0.3%	0.1%	0.0%
SA	TAS	VIC	WA
2,166,318	344,991	10,159,836	1,705,573
POSITIVE	POSITIVE	POSITIVE	POSITIVE
0.0%	0.1%	0.3%	0.1%

DAILY NUMBER OF REPORTED CASES

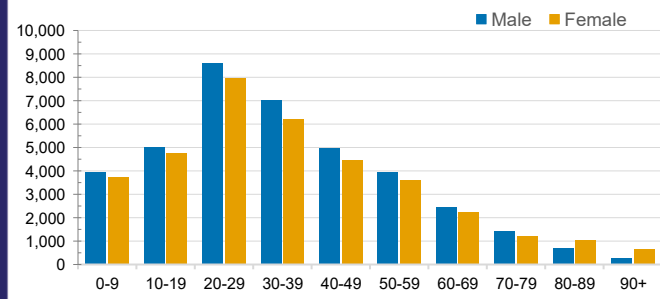


CASES IN AGED CARE SERVICES

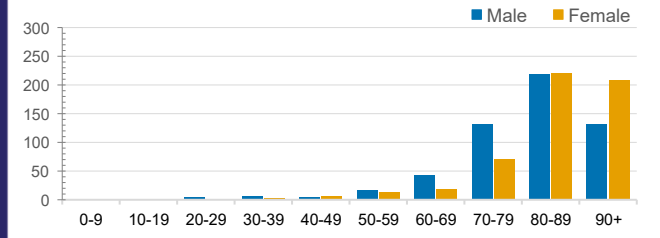
Confirmed Cases	Australia	ACT	NSW	NT	QLD	SA	TAS	VIC	WA
Residential Care Recipients	2308 [1389]	0	315 [53]	0	1 (1)	0	1 (1)	1991 [1336]	0
In Home Care Recipients	90 [73]	0	20 [13]	0	8 [8]	1 [1]	5 [3]	55 [48]	1 (1)

Cases in care recipients [recovered] (deaths)

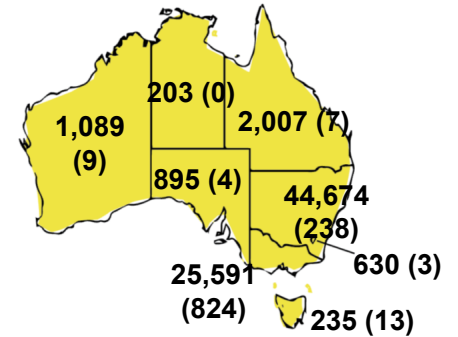
CASES BY AGE GROUP AND SEX



DEATHS BY AGE GROUP AND SEX

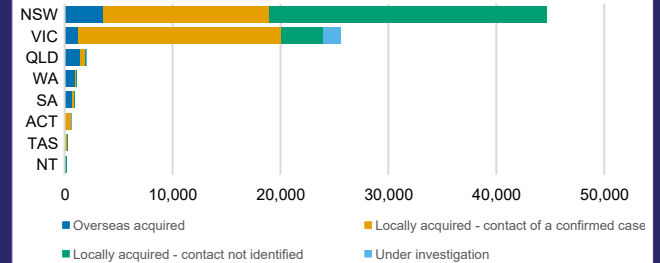


CASES (DEATHS) BY STATE AND TERRITORIES



CASES BY SOURCE OF INFECTION

Australia (% of all confirmed cases)



PUBLIC HEALTH RESPONSE MEASURE

Proportion of total cases under investigation

