



Australian Government
Operation COVID Shield

COVID-19 Vaccine Roll-out

31 August 2021

Data as at:
30 Aug 2021

Total vaccine doses



19,362,666 total vaccine
doses administered nationally as at 30 August
+276,925 recorded in the last 24 hours



12,106,618

people have had at least one
dose

58.7%

of people over the age of 16
have had at least one dose



7,222,529

people are fully vaccinated

35.0%

of people over the age of 16 are
fully vaccinated

NSW
6,869,640
(+148,297 daily
increase)

VIC
4,934,476
(+41,690 daily
increase)

QLD
3,444,758
(+34,616 daily
increase)

WA
1,750,227
(+22,289 daily
increase)

TAS
448,160
(+5,159 daily
increase)

SA
1,250,903
(+14,468 daily
increase)

ACT
454,575
(+8,508 daily
increase)

NT
209,927
(+1,898 daily
increase)

*Administration state breakdown indicates state in which a vaccine was administered

**Overall dose count includes instances of more than two doses per person in a small number of cases.

Data as at:
30 Aug 2021

157,322

doses administered to
persons residing in
other territories or with
missing residential
information

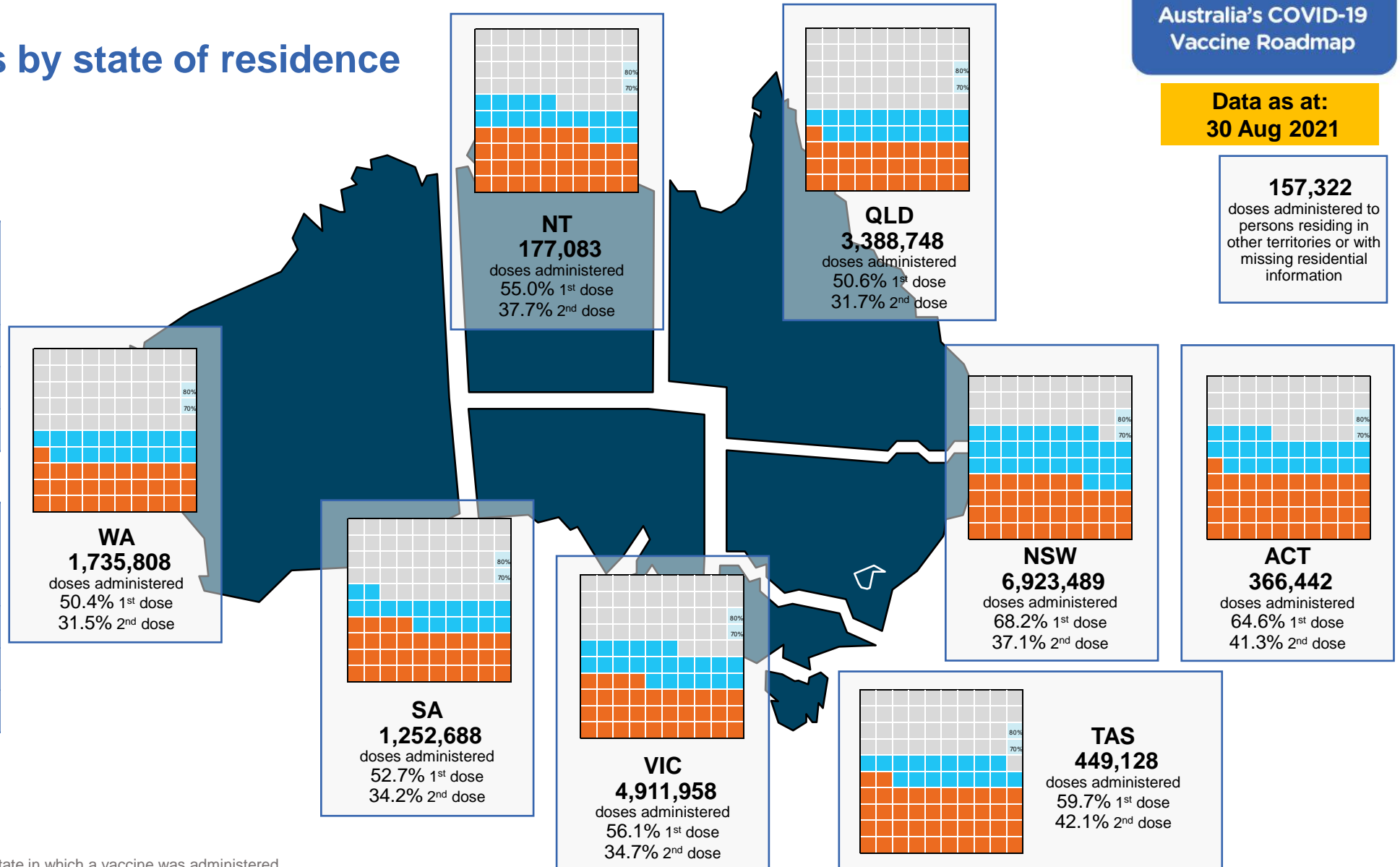
Vaccinations by state of residence

First doses

Age Today	4 weeks ago	8 weeks ago
16+	58.7%	42.0%
50+	78.8%	66.9%
70+	87.4%	80.4%

Fully vaccinated

Age Today	4 weeks ago	8 weeks ago
16+	35.0%	20.2%
50+	51.7%	28.3%
70+	62.9%	43.8%



*Residential state may differ from the state in which a vaccine was administered

Commonwealth and Jurisdiction vaccine doses administered

Data as at:
30 Aug 2021



19,362,666 total vaccine
doses administered nationally as at 30 August

+ 276,925 recorded in the last 24 hours

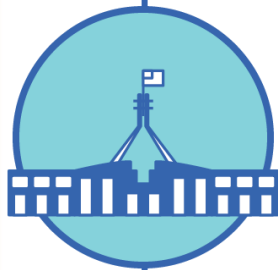


8,112,137

doses administered by state
and territory facilities

+ 111,985

recorded in the last 24 hours



11,250,529

doses administered by
commonwealth facilities

+ 164,940

recorded in the last 24 hours

10,492,443 total vaccine doses
administered in primary care settings

758,086 total vaccine doses
administered in aged care and disability
settings

NSW	Jurisdictions	Commonwealth
Cumulative	2,503,391	4,366,249
Daily increase	77,196	71,101

VIC	Jurisdictions	Commonwealth
Cumulative	2,333,890	2,600,586
Daily increase	1,132	40,558

QLD	Jurisdictions	Commonwealth
Cumulative	1,330,188	2,114,570
Daily increase	11,243	23,373

WA	Jurisdictions	Commonwealth
Cumulative	826,226	924,001
Daily increase	11,514	10,775

TAS	Jurisdictions	Commonwealth
Cumulative	238,293	209,867
Daily increase	2,664	2,495

SA	Jurisdictions	Commonwealth
Cumulative	549,531	701,372
Daily increase	6,805	7,663

ACT	Jurisdictions	Commonwealth
Cumulative	205,030	249,545
Daily increase	307	8,201

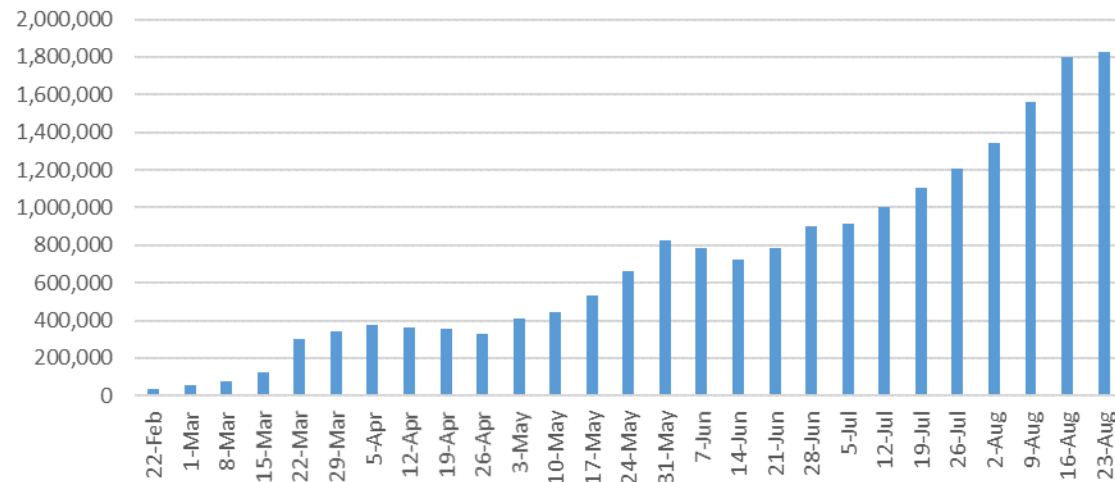
NT	Jurisdictions	Commonwealth
Cumulative	125,588	84,339
Daily increase	1,124	774

Aged Care numbers last 24 hours have decreased slightly due to reclassification of some industry providers to other Commonwealth category.

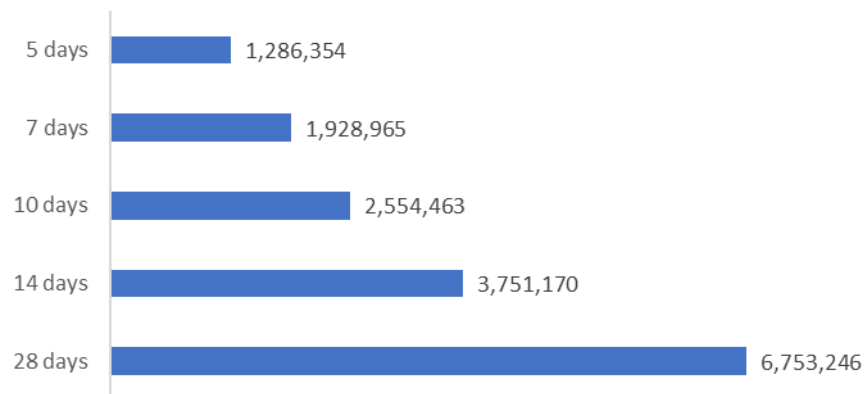
Source: Australian Immunisation Register

Vaccine milestone charts

Jabs in arms by week



Doses reported

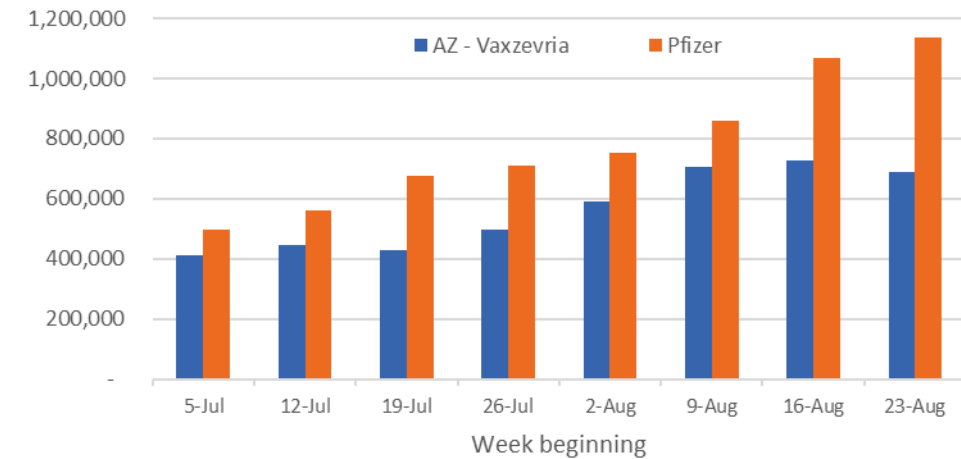


*Sourced from the Australian Immunisation Register.

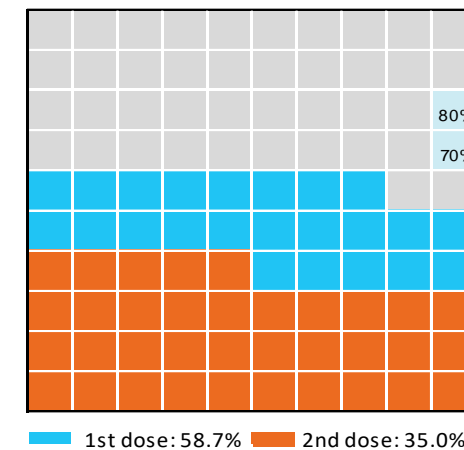
Data as at:
30 Aug 2021

Australia's COVID-19
Vaccine Roadmap

Doses by administration week and vaccine type



Eligible population percentage coverage



*Each square represents 1% of the national population.
Squares are filled as milestones are achieved.

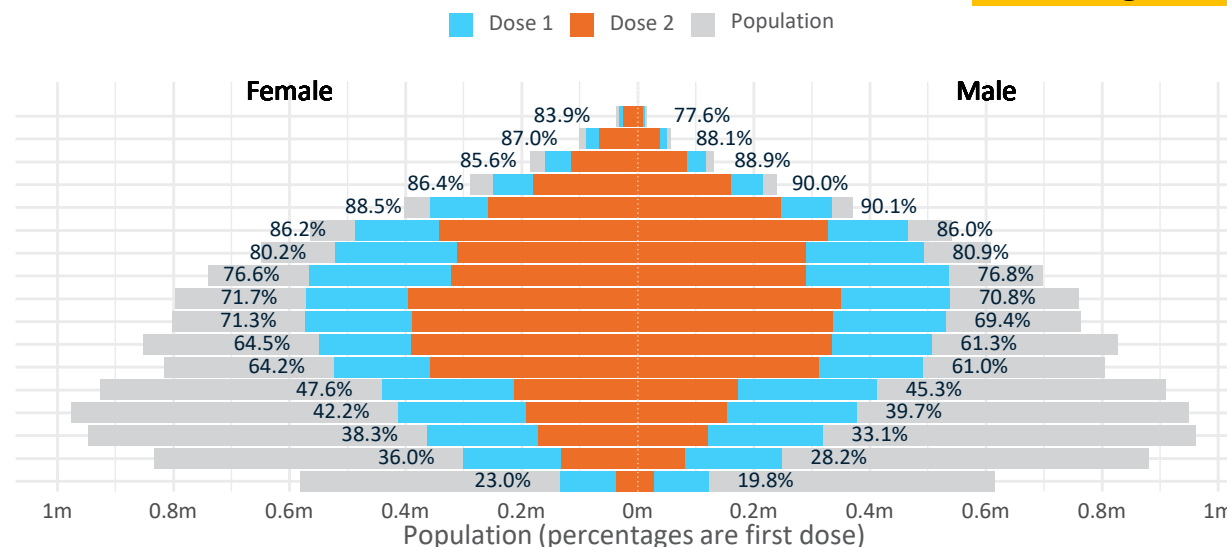
Doses by age and sex

First and second doses by age and sex, using ABS age brackets

Australia's COVID-19
Vaccine Roadmap

Data as at:
30 Aug 2021

Age	Dose 1	Dose 2
95+	43,506 (82.2%)	33,488 (63.3%)
90-94	138,597 (87.5%)	103,155 (65.1%)
85-89	275,265 (87.1%)	199,535 (63.1%)
80-84	465,338 (88.1%)	339,099 (64.2%)
75-79	691,086 (89.3%)	503,401 (65.1%)
70-74	952,171 (86.2%)	668,712 (60.5%)
65-69	1,014,094 (80.6%)	600,815 (47.8%)
60-64	1,102,914 (76.8%)	611,020 (42.5%)
55-59	1,109,635 (71.3%)	744,135 (47.8%)
50-54	1,102,468 (70.5%)	723,999 (46.3%)
45-49	1,055,405 (62.9%)	724,577 (43.2%)
40-44	1,015,190 (62.7%)	668,061 (41.2%)
35-39	855,017 (46.6%)	386,287 (21.1%)
30-34	792,729 (41.2%)	346,125 (18.0%)
25-29	686,700 (36.0%)	294,148 (15.4%)
20-24	550,959 (32.2%)	212,787 (12.4%)
16-19	255,544 (21.4%)	63,185 (5.3%)



	AUS	ACT	NSW	NT	QLD	SA	TAS	VIC	WA
16 and over - dose 1	12,106,618	222,267	4,475,444	104,839	2,079,463	758,560	262,868	3,031,660	1,066,553
16 and over - dose 2	7,222,529	142,253	2,433,592	71,871	1,303,918	492,748	185,145	1,873,762	667,121
16 and over - population	20,619,959*	344,037	6,565,651	190,571	4,112,707	1,440,400	440,172	5,407,574	2,114,978
16 and over % with dose 1	58.71%	64.61%	68.16%	55.01%	50.56%	52.66%	59.72%	56.06%	50.43%
16 and over % with dose 2	35.03%	41.35%	37.07%	37.71%	31.70%	34.21%	42.06%	34.65%	31.54%
50 and over - dose 1	6,895,074	118,224	2,329,300	43,125	1,299,547	499,507	173,580	1,748,388	641,195
50 and over - dose 2	4,527,359	80,799	1,504,232	30,232	853,795	317,538	123,367	1,162,995	430,066
50 and over - population	8,749,703	127,802	2,807,793	62,280	1,758,855	674,384	220,036	2,211,211	885,370
50 and over % with dose 1	78.80%	92.51%	82.96%	69.24%	73.89%	74.07%	78.89%	79.07%	72.42%
50 and over % with dose 2	51.74%	63.22%	53.57%	48.54%	48.54%	47.09%	56.07%	52.60%	48.57%
70 and over - dose 1	2,565,963	39,810	864,595	9,509	495,134	202,768	68,285	634,962	232,289
70 and over - dose 2	1,847,390	30,415	615,808	7,201	360,724	138,908	51,948	460,236	169,299
70 and over - population	2,934,706	39,946	962,606	12,343	577,767	240,514	77,155	743,519	280,281
70 and over % with dose 1	87.44%	>95%	89.82%	77.04%	85.70%	84.31%	88.50%	85.40%	82.88%
70 and over % with dose 2	62.95%	76.14%	63.97%	58.34%	62.43%	57.75%	67.33%	61.90%	60.40%

*National population will not equal sum of listed jurisdictions due to a small number of people counted in national population residing in some 'other' territories

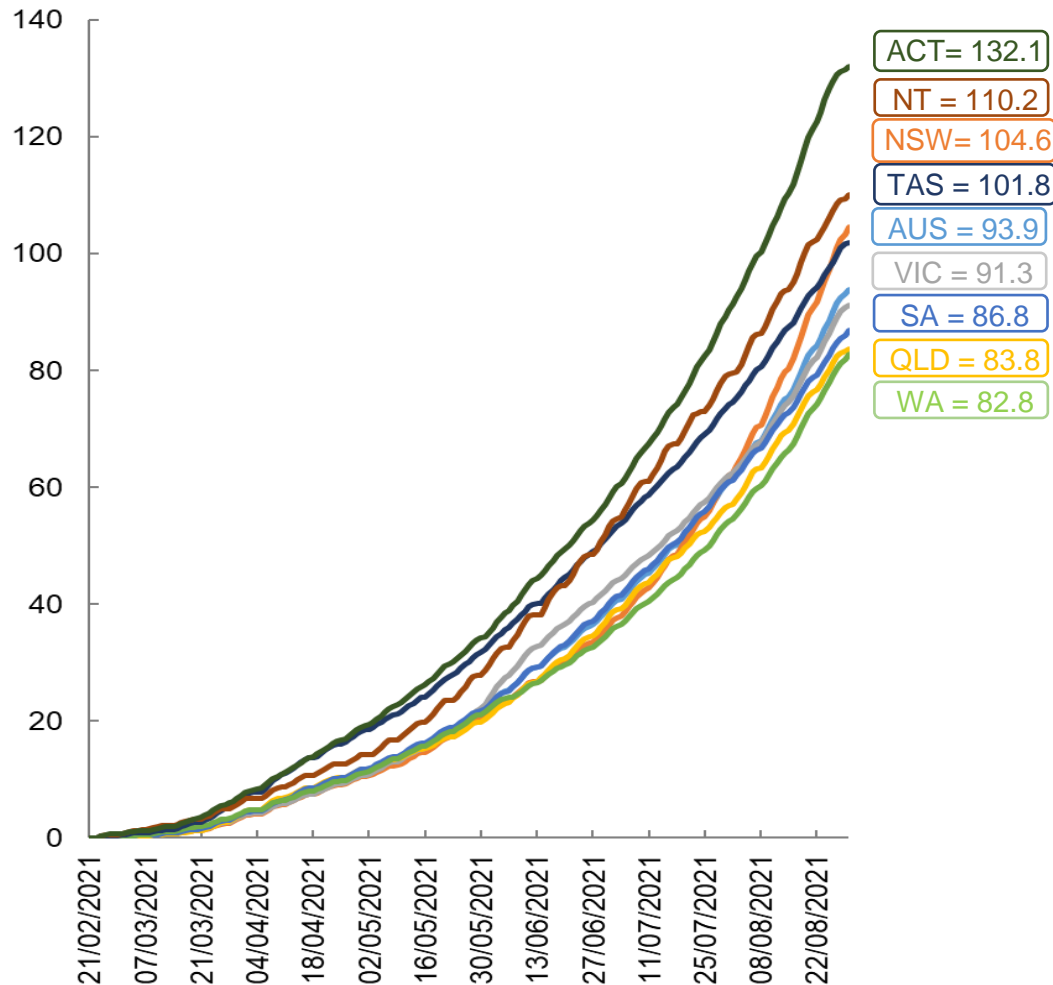
Doses sourced from Australian Immunisation Register, population from ABS ERP June 2020

Vaccinations by location

Data as at:
30 Aug 2021

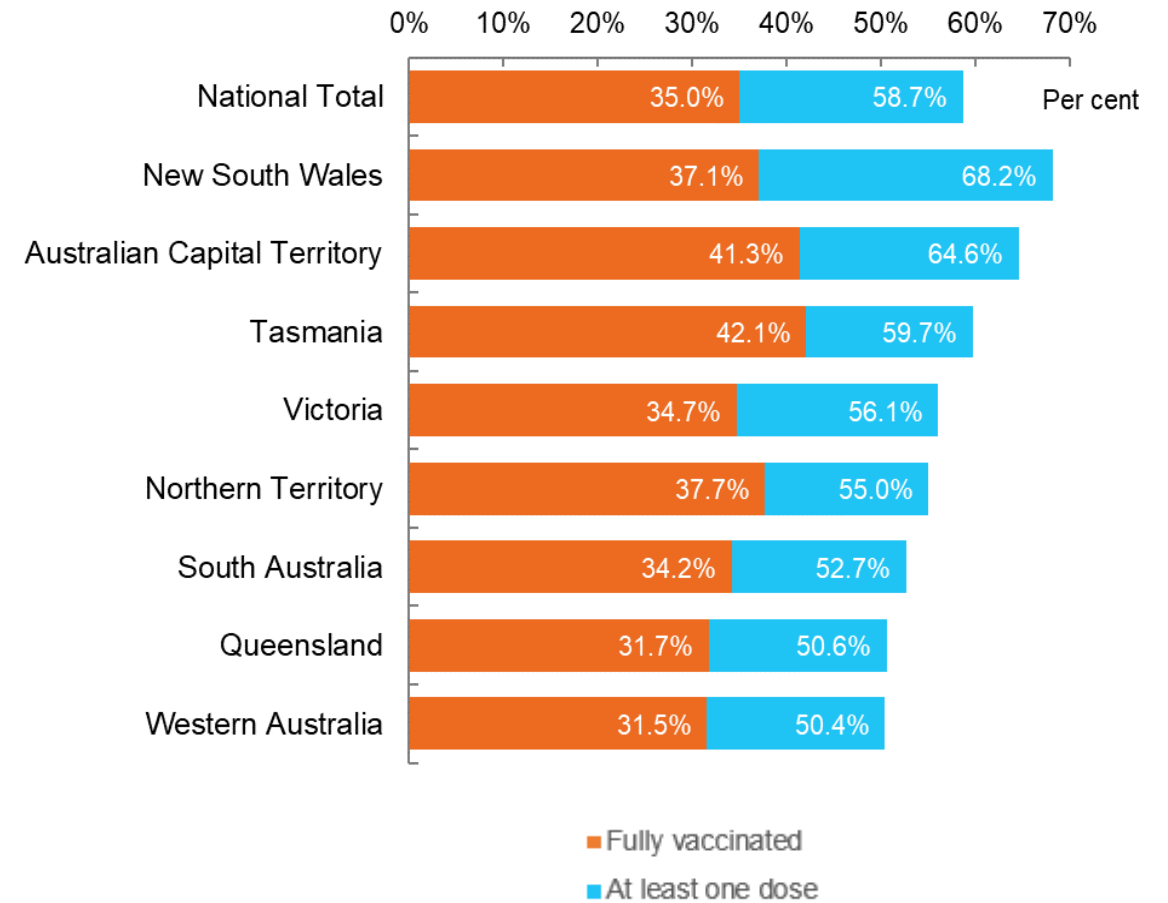
Australia's COVID-19
Vaccine Roadmap

Cumulative total doses administered vs state populations*



*Not an indication of percentage vaccinated, numbers will exceed 100 due to multiple doses required per person of the population

First and Second Doses by state of residence



Aboriginal and Torres Strait Islander peoples

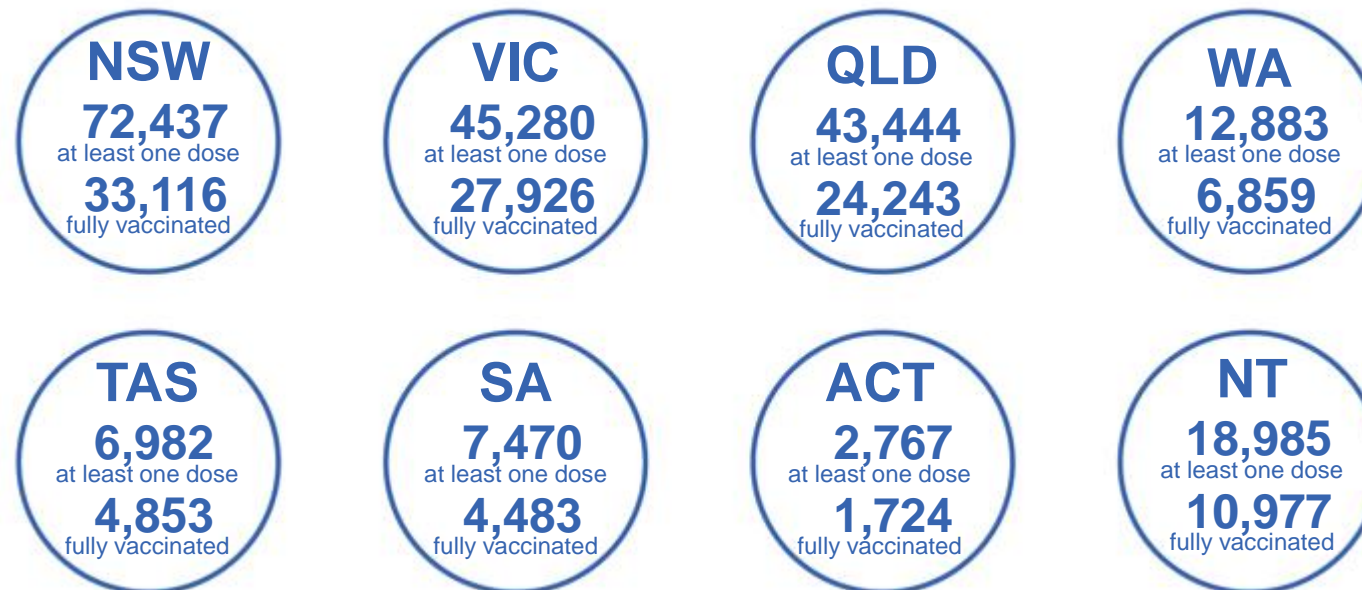
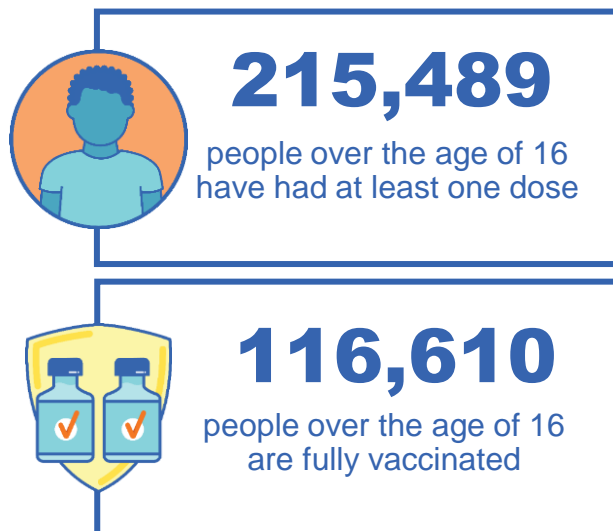
Number of people vaccinated

Data as at:
29 Aug 2021
Updated weekly
Data reconciliation underway

Australia's COVID-19
Vaccine Roadmap

162 Aboriginal community controlled health services (ACCHS)

0#	45	26	38	11	3	21	18
ACT	NSW	NT	QLD	SA	TAS	VIC	WA



5,241 people with at least one dose
2,429 people fully vaccinated

residing in other territories or with missing residential information

Source: Australian Immunisation Register

*Identifying as Aboriginal and Torres Strait Islander is optional and the estimated population may be under reported.

**Includes all Aboriginal and Torres Strait Islander peoples who have received a vaccination, not limited to those administered in an ACCHS setting

***Updated weekly.

#ACCHS in the ACT are currently operating as a Commonwealth Vaccine Clinics so not included to avoid double counting

Data as at:
30 Aug 2021

Commonwealth primary care



Primary care vaccine administration sites

5,347	137	162	2,925
GPs	CVCs	ACCHS	Pharmacies



10,492,443 total vaccine doses administered primary care settings as at 30 August
+ 171,835 recorded in the last 24 hours

Primary care vaccinations by provider type

	Doses administered	Daily increase	7 day increase
General Practice* includes other Commonwealth	10,180,878	154,879	1,090,496
Pharmacy	311,565	16,956	120,989



53,243 doses administered to persons residing in other territories or with missing residential information

*General practice includes Commonwealth Vaccination Clinics, Aboriginal Community Health Centres, Royal Flying Doctor Service and other Commonwealth vaccination facilities

Source: Australian Immunisation Register

Data as at:
30 Aug 2021

Commonwealth aged care and disability doses administered



People vaccinated in aged care
and residential disability facilities

444,590

People with a first dose

312,368

People fully vaccinated

Residential aged care
facilities

2,569

Sites visited for first doses

2,568

Sites visited for second doses



758,086

(- 6,895 last 24 hours)

Total vaccine doses administered in aged care
and disability facilities as at 30 August

Number of doses administered as part of the Commonwealth aged and disability care rollout

NSW
339,780
(-5,259 daily
increase)

VIC
151,399
(+413 daily
increase)

QLD
114,461
(-2,029 daily
increase)

WA
53,621
(+83 daily
increase)

TAS
15,571
(-3 daily
increase)

SA
48,512
(+30 daily
increase)

ACT
9,086
(-16 daily
increase)

NT
5,237
(-5 daily
increase)

20,419 doses administered to persons
residing in other territories or with
missing residential information

*Sourced from the Australian Immunisation Register. Includes all persons vaccinated at participating residential aged care, disability and related industry settings.

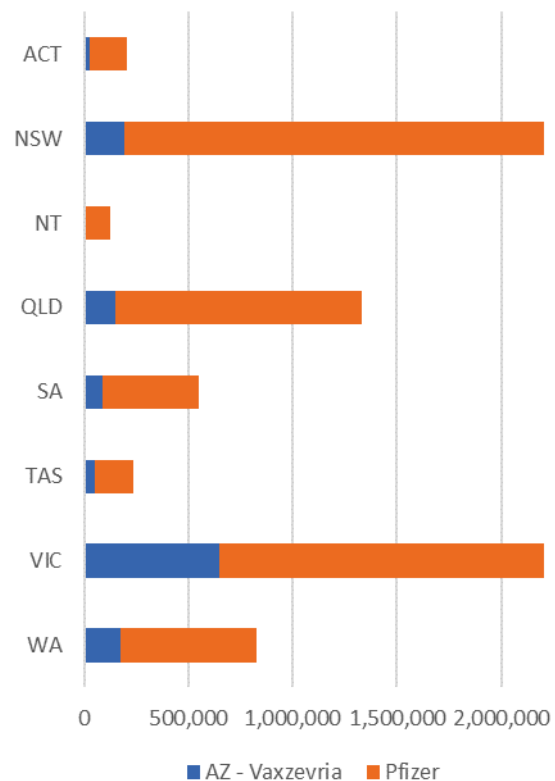
**State level breakdown indicates the residential location and may not align to the state in which the vaccination occurred.

Aged Care numbers last 24 hours have decreased slightly due to reclassification of some industry providers to other Commonwealth category.

Data as at:
30 Aug 2021

Jurisdiction administered

Total vaccine doses administered in State and Territory clinics as at 30 August



8,112,137 total vaccine doses administered
in State and Territory clinics as at 30 August
+ **111,985** recorded in the last 24 hours
+ **841,086** recorded in the last 7 days

NSW
2,503,391
(+77,196 daily
increase)

VIC
2,333,890
(+1,132 daily
increase)

QLD
1,330,188
(+11,243 daily
increase)

WA
826,226
(+11,514 daily
increase)

TAS
238,293
(+2,664 daily
increase)

SA
549,531
(+6,805 daily
increase)

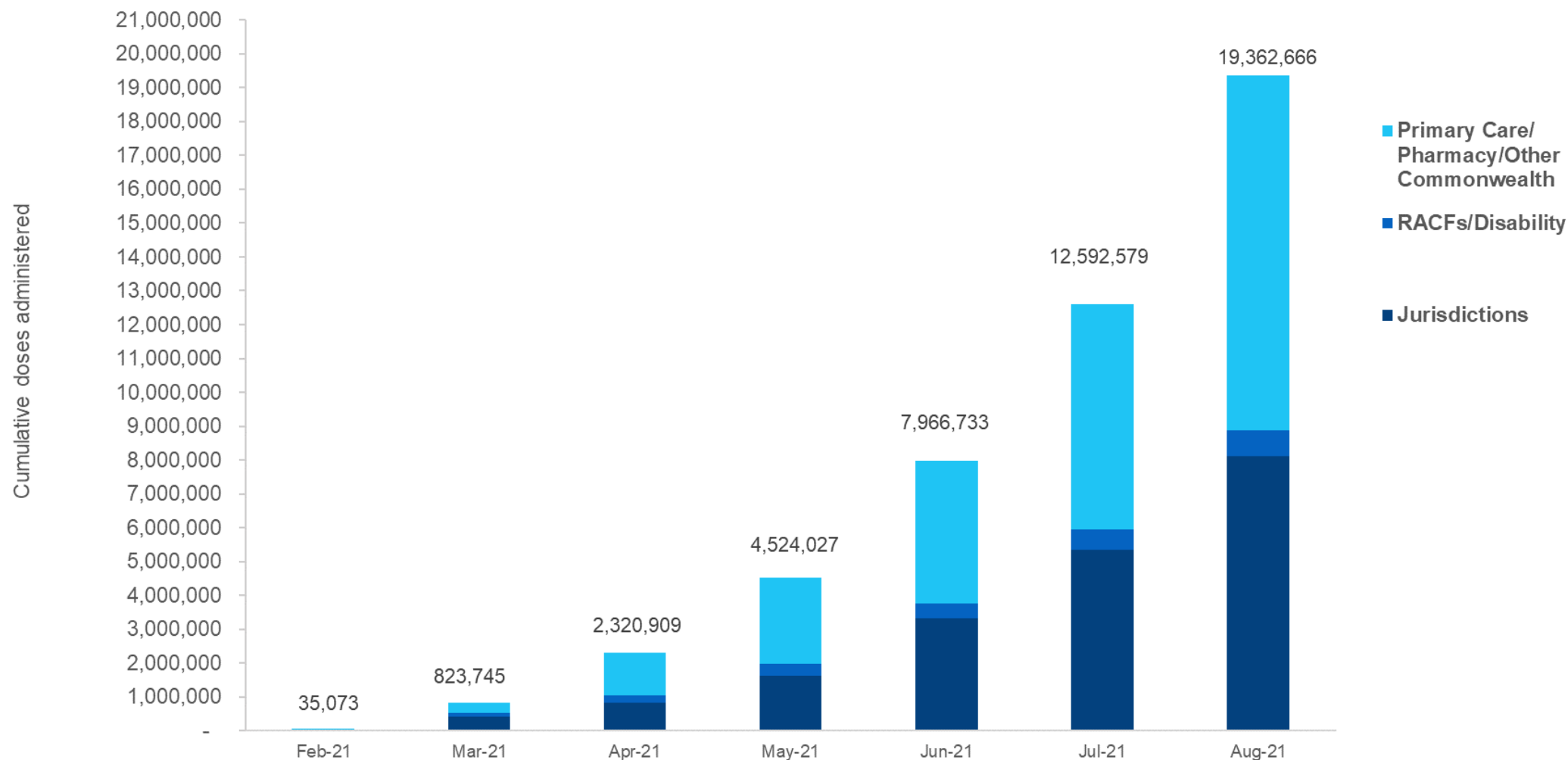
ACT
205,030
(+307 daily
increase)

NT
125,588
(+1,124 daily
increase)

*Sourced from the Australian Immunisation Register and self-reported data. Numbers are calculated as difference in daily cumulative reported numbers to allow for historical corrections in all self-reported data sources.

Cumulative doses administered by channel

Data as at:
30 Aug 2021



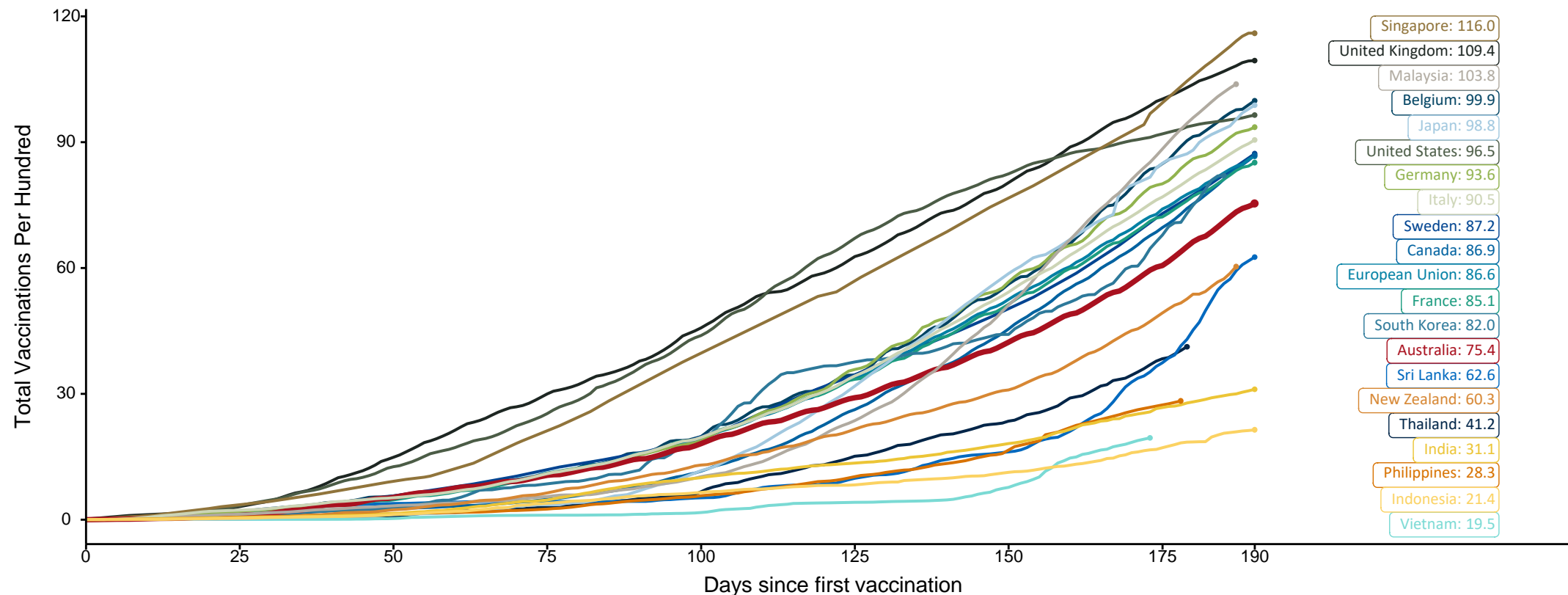
Source: Australian Immunisation Register

Doses at equivalent stages of rollout (Day 190)

Data as at:
30 Aug 2021

The x-axis is truncated at the length of Australia's vaccination program. Countries with intermittent reporting have had their doses per 100 imputed to Australia's current stage of rollout. Israel excluded as it is beyond scale of the graph

Cumulative doses administered (30 Aug): **19,362,666**

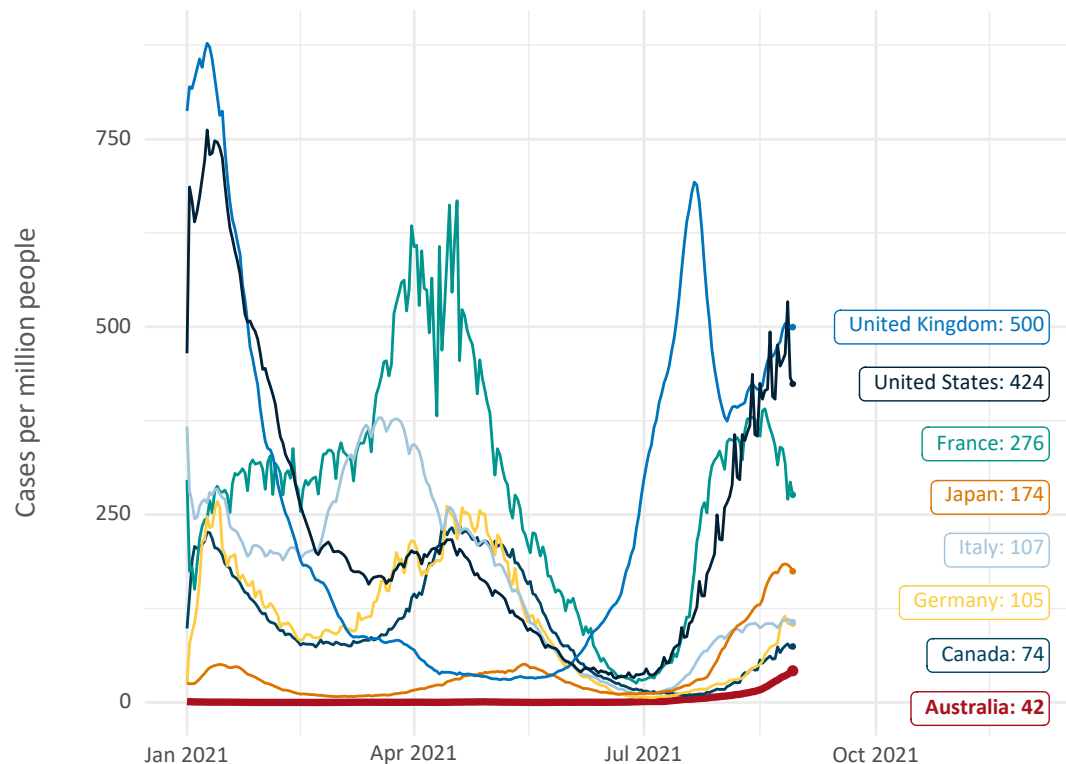


Source: Department of Health (Australia), Our World in Data (international)
Latest data: 30 August

International data – COVID-19

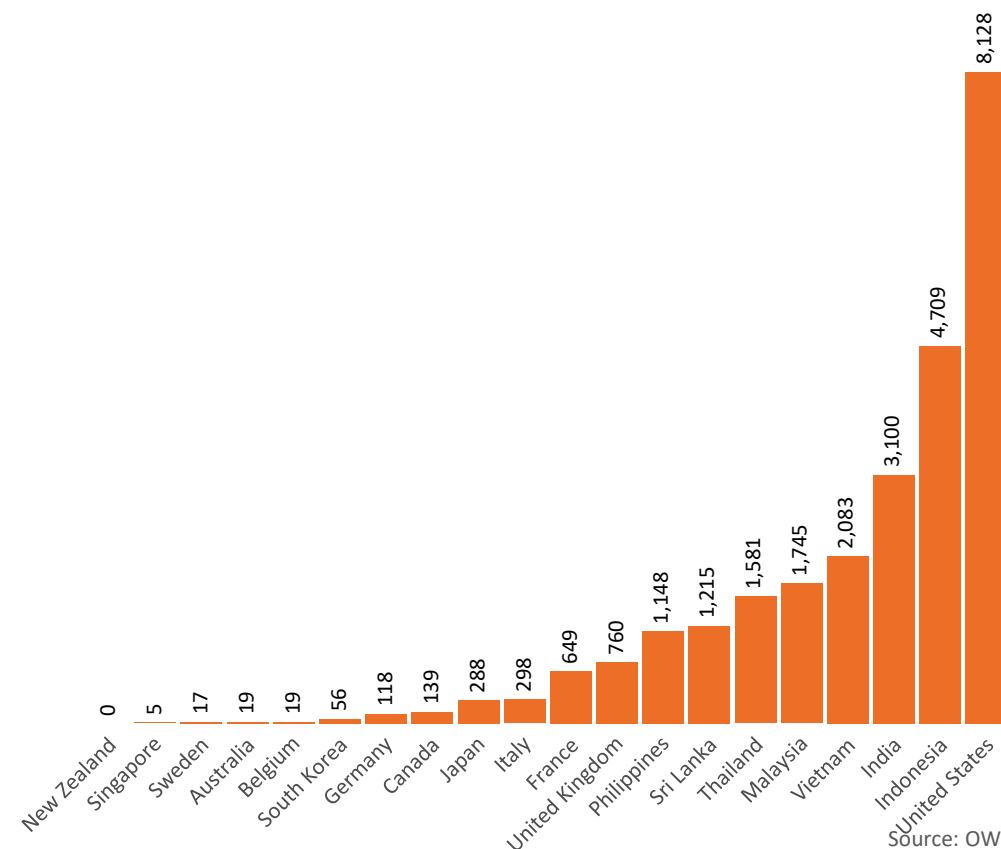
Data as at:
30 Aug 2021

New daily cases per million in 2021, Australia and G7 countries
Smoothed - 7 day average



Source: OWID
Data downloaded: 31 Aug 2021 08:41
Latest data: 29 Aug 2021

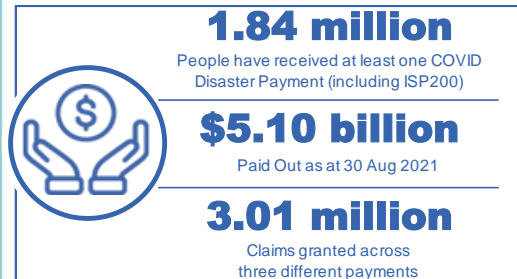
COVID-19 deaths in past 7 days - Australia and select countries



Source: OWID
Data downloaded: 31 Aug 2021 08:41
Latest data: 29 Aug 2021

Pandemic Response Payments

Data as at midnight:
30 Aug 2021



COVID Disaster Payment:	3.00 million claims received - 1.71 million individuals paid a total of \$4.95 billion.
\$200 Income Support Payment:	171,000 claims received - 135,000 individuals paid a total of \$82.82 million.
Pandemic Leave Disaster Payment:	49,000 claims received - 42,000 individuals paid a total of \$65.53 million.



**THREE
PAYMENTS
AVAILABLE**

COVID Disaster Payment
assisting during a lockdown event in a Commonwealth hotspot.

Income Support Payment \$200
for income support recipients who lost at least 8 hours of work.

Pandemic Leave Disaster Payment
for those who have to self-isolate, quarantine or care.

For more information visit:
servicesaustralia.gov.au

COVID-19 DISASTER PAYMENTS

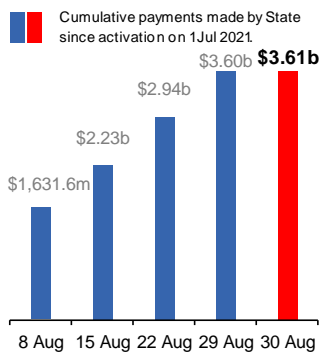
New South Wales

Active lockdown n since 24 Jun

960,000 people have received at least one COVID Disaster Payment.

\$3.61b paid out as at 30 Aug 2021.

\$657m paid in initial and reoccurring payments in the week ending 29 Aug 2021.



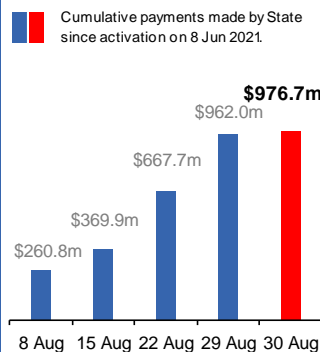
Victoria

Active lockdown n (#6) since 6 Aug

419,000 people have received at least one COVID Disaster Payment.

\$976.7m paid out as at 30 Aug 2021.

\$294m paid in initial and reoccurring payments in the week ending 29 Aug 2021.



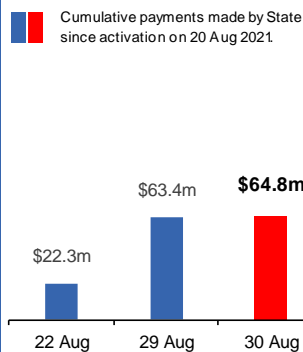
Australian Capital Territory

Active lockdown n since 12 Aug

49,000 people have received at least one COVID Disaster Payment.

\$64.8m paid out as at 30 Aug 2021.

\$41m paid in initial and reoccurring payments in the week ending 29 Aug 2021.



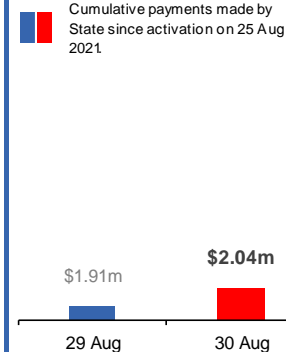
Northern Territory

Lockdown n from 18 – 20 Jul
Claiming period ends 13 Sep

3,128 people have received at least one COVID Disaster Payment.

\$2.04m paid out as at 30 Aug 2021.

\$1.91m paid in initial payments in the week ending 29 Aug 2021.



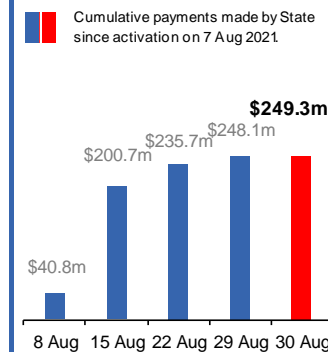
Queensland

Lockdown n from 31 Jul – 11 Aug
Claiming period ended 28 Aug

192,000 people have received at least one COVID Disaster Payment.

\$249.3m paid out as at 30 Aug 2021.

\$12m paid in initial and reoccurring payments in the week ending 29 Aug 2021.



South Australia

Lockdown n from 21 – 27 Jul
Claiming period ended 17 Aug

86,000 people have received at least one COVID Disaster Payment.

\$48.2m paid out as at 30 Aug 2021.

\$43,000 paid in initial payments in the week ending 29 Aug 2021.

