



Australian Government
Operation COVID Shield

COVID-19 Vaccine Roll-out

30 August 2021

Data as at:
29 Aug 2021

Total vaccine doses



19,085,741 total vaccine
doses administered nationally as at 29 August
+158,428 recorded in the last 24 hours



11,956,986

people have had at least one
dose

58.0%

of people over the age of 16
have had at least one dose



7,095,576

people are fully vaccinated

34.4%

of people over the age of 16 are
fully vaccinated

NSW
6,721,343
(+71,944 daily
increase)

VIC
4,892,786
(+40,498 daily
increase)

QLD
3,410,142
(+20,525 daily
increase)

WA
1,727,938
(+13,989 daily
increase)

TAS
443,001
(+2,916 daily
increase)

SA
1,236,435
(+6,587 daily
increase)

ACT
446,067
(+1,485 daily
increase)

NT
208,029
(+484 daily
increase)

*Administration state breakdown indicates state in which a vaccine was administered

**Overall dose count includes instances of more than two doses per person in a small number of cases.

Source: Australian Immunisation Register

Data as at:
29 Aug 2021

154,874

doses administered to
persons residing in
other territories or with
missing residential
information

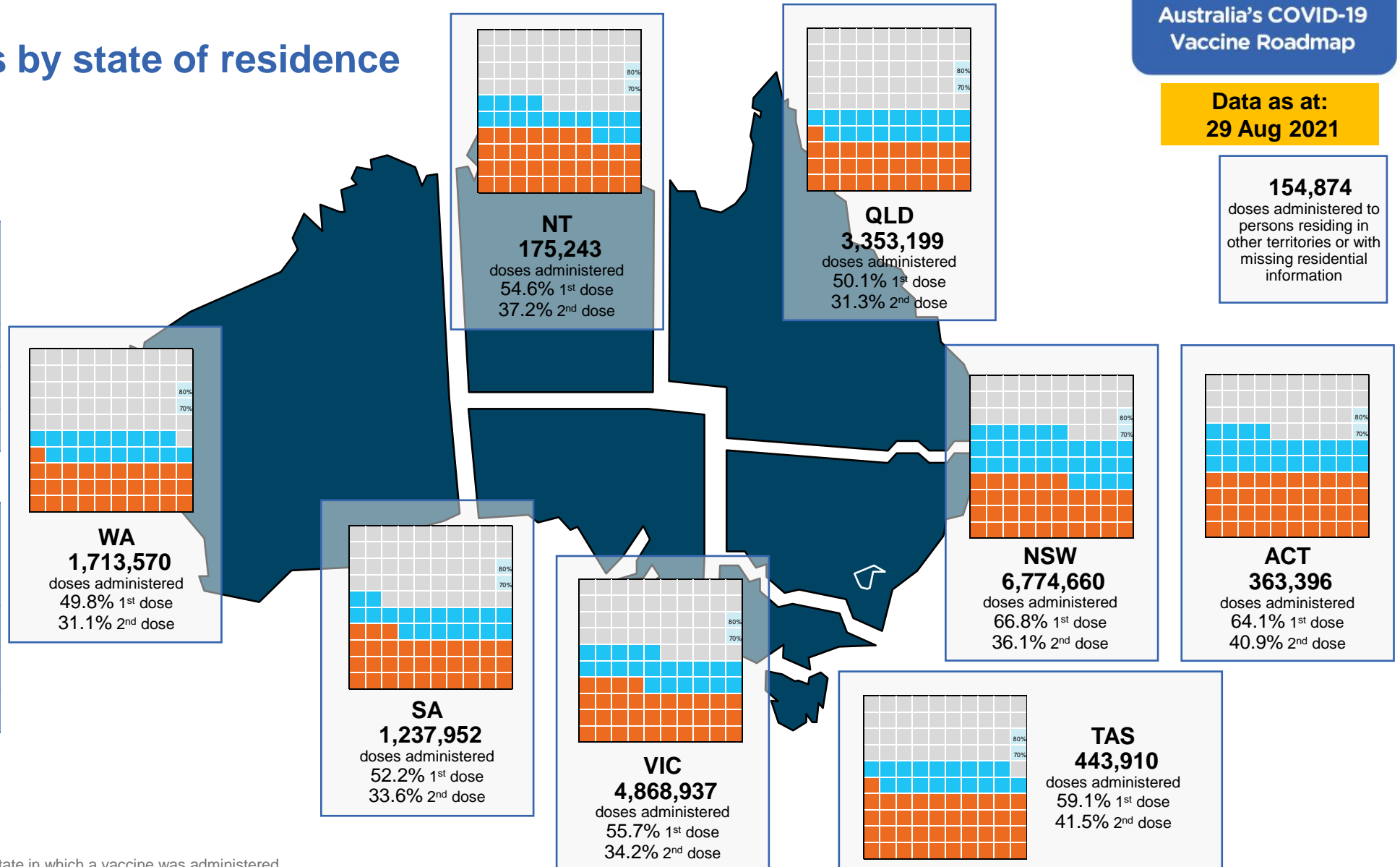
Vaccinations by state of residence

First doses

Age Today	4 weeks ago	8 weeks ago
16+	58.0%	41.5%
50+	78.3%	66.5%
70+	87.7%	80.1%

Fully vaccinated

Age Today	4 weeks ago	8 weeks ago
16+	34.4%	19.7%
50+	50.8%	27.5%
70+	62.2%	43.0%



*Residential state may differ from the state in which a vaccine was administered

Commonwealth and Jurisdiction vaccine doses administered

Data as at:
29 Aug 2021



19,085,741 total vaccine
doses administered nationally as at 29 August

+ 158,428 recorded in the last 24 hours

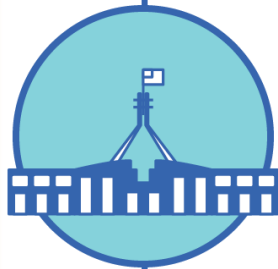


8,000,152

doses administered by state
and territory facilities

+ 115,225

recorded in the last 24 hours



11,085,589

doses administered by
commonwealth facilities

+ 43,203

recorded in the last 24 hours

10,320,608 total vaccine doses
administered in primary care settings

764,981 total vaccine doses
administered in aged care and disability
settings

NSW	Jurisdictions	Commonwealth
Cumulative	2,426,195	4,295,148
Daily increase	54,568	17,376

VIC	Jurisdictions	Commonwealth
Cumulative	2,332,758	2,560,028
Daily increase	27,588	12,910

QLD	Jurisdictions	Commonwealth
Cumulative	1,318,945	2,091,197
Daily increase	14,706	5,819

WA	Jurisdictions	Commonwealth
Cumulative	814,712	913,226
Daily increase	10,550	3,439

TAS	Jurisdictions	Commonwealth
Cumulative	235,629	207,372
Daily increase	2,672	244

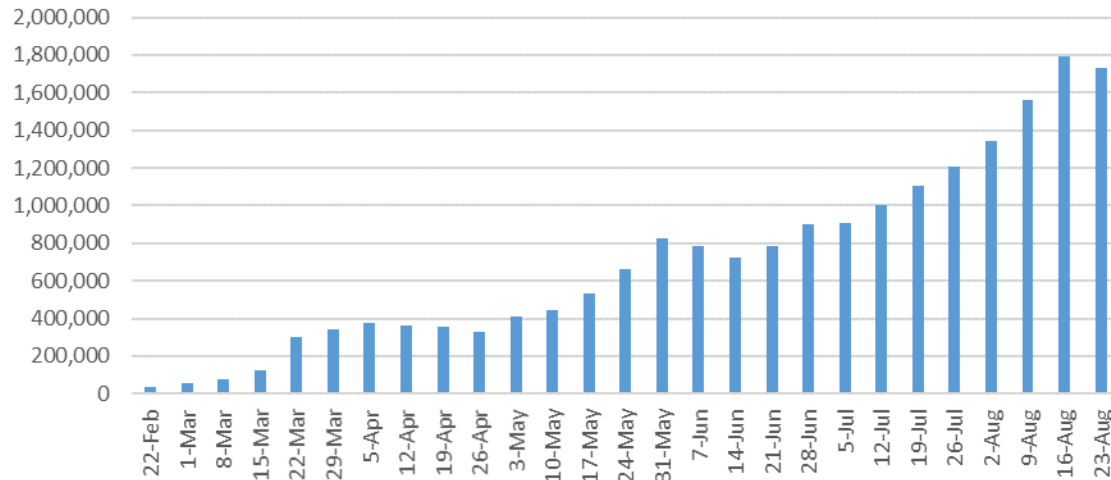
SA	Jurisdictions	Commonwealth
Cumulative	542,726	693,709
Daily increase	4,627	1,960

ACT	Jurisdictions	Commonwealth
Cumulative	204,723	241,344
Daily increase	34	1,451

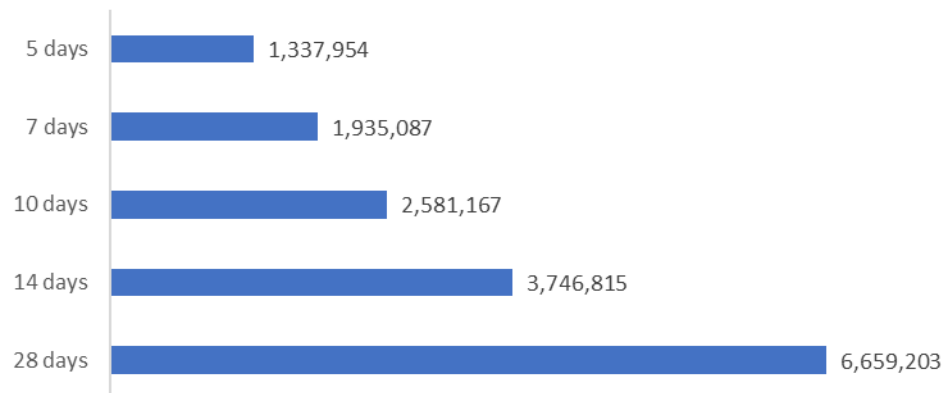
NT	Jurisdictions	Commonwealth
Cumulative	124,464	83,565
Daily increase	480	4

Vaccine milestone charts

Jabs in arms by week



Doses reported

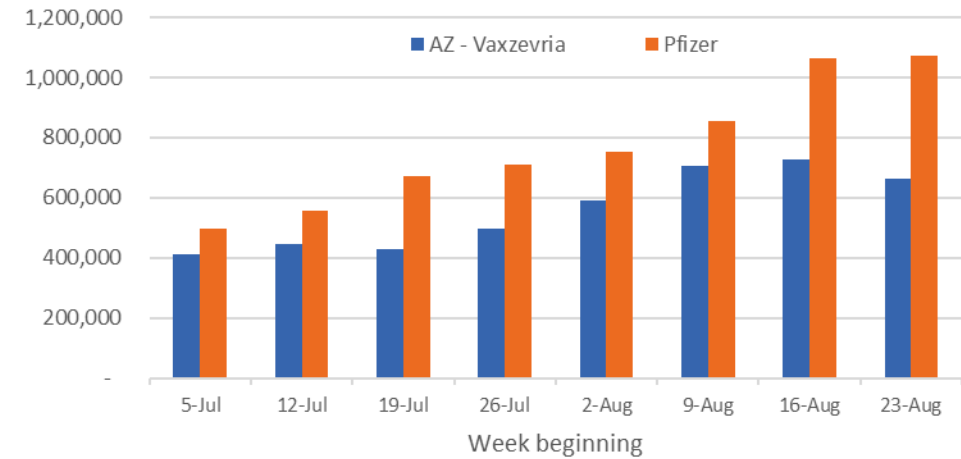


*Sourced from the Australian Immunisation Register.

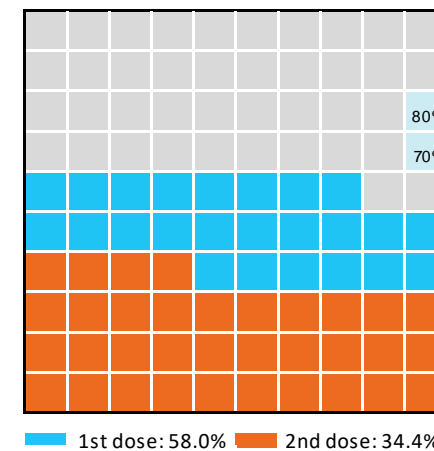
Data as at:
29 Aug 2021

Australia's COVID-19
Vaccine Roadmap

Doses by administration week and vaccine type



Eligible population percentage coverage



*Each square represents 1% of the national population.
Squares are filled as milestones are achieved.

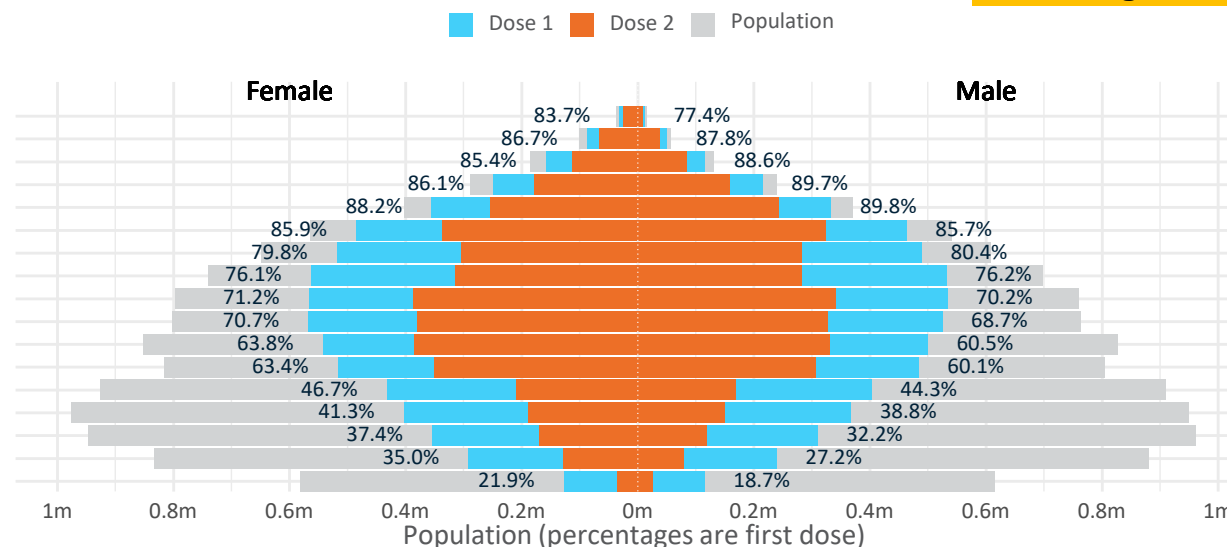
Doses by age and sex

First and second doses by age and sex, using ABS age brackets

Australia's COVID-19
Vaccine Roadmap

Data as at:
29 Aug 2021

Age	Dose 1	Dose 2
95+	43,372 (82.0%)	33,228 (62.8%)
90-94	138,171 (87.2%)	102,303 (64.6%)
85-89	274,384 (86.8%)	197,521 (62.5%)
80-84	463,840 (87.8%)	335,482 (63.5%)
75-79	688,812 (89.0%)	497,544 (64.3%)
70-74	948,763 (85.9%)	660,189 (59.7%)
65-69	1,008,830 (80.2%)	587,749 (46.7%)
60-64	1,095,651 (76.3%)	596,621 (41.5%)
55-59	1,100,633 (70.8%)	727,838 (46.8%)
50-54	1,092,260 (69.8%)	707,698 (45.2%)
45-49	1,042,846 (62.2%)	714,930 (42.6%)
40-44	1,001,779 (61.8%)	658,007 (40.6%)
35-39	837,381 (45.6%)	378,939 (20.7%)
30-34	774,583 (40.3%)	339,464 (17.6%)
25-29	669,077 (35.1%)	288,572 (15.1%)
20-24	533,904 (31.2%)	208,230 (12.2%)
16-19	242,700 (20.3%)	61,261 (5.1%)



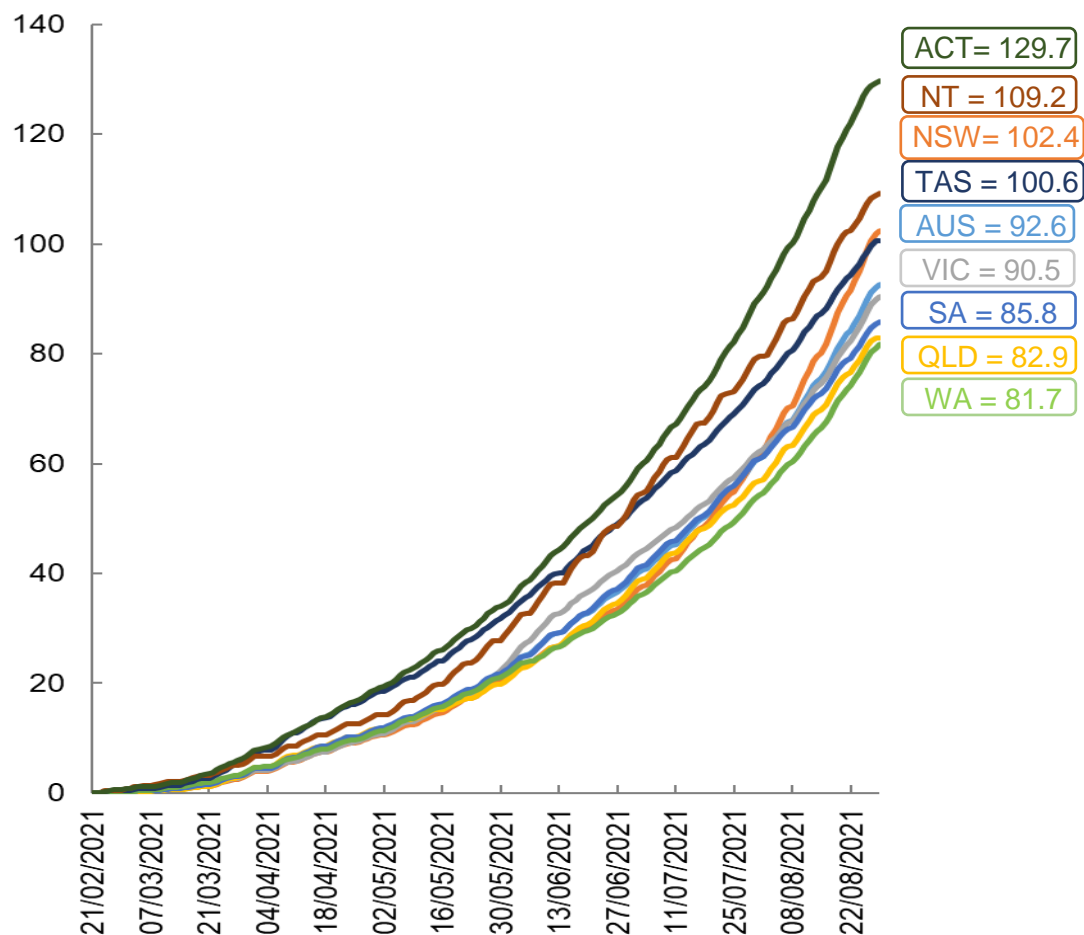
	AUS	ACT	NSW	NT	QLD	SA	TAS	VIC	WA
16 and over - dose 1	11,956,986	220,620	4,387,803	104,021	2,061,432	752,475	260,165	3,013,666	1,053,625
16 and over - dose 2	7,095,576	140,871	2,372,417	70,857	1,286,498	484,125	182,649	1,848,844	657,856
16 and over - population	20,619,959*	344,037	6,565,651	190,571	4,112,707	1,440,400	440,172	5,407,574	2,114,978
16 and over % with dose 1	57.99%	64.13%	66.83%	54.58%	50.12%	52.24%	59.11%	55.73%	49.82%
16 and over % with dose 2	34.41%	40.95%	36.13%	37.18%	31.28%	33.61%	41.49%	34.19%	31.10%
50 and over - dose 1	6,854,716	117,848	2,309,010	42,925	1,293,694	497,155	172,769	1,741,762	637,449
50 and over - dose 2	4,446,173	79,822	1,471,639	29,863	841,710	311,484	121,605	1,141,790	424,136
50 and over - population	8,749,703	127,802	2,807,793	62,280	1,758,855	674,384	220,036	2,211,211	885,370
50 and over % with dose 1	78.34%	92.21%	82.24%	68.92%	73.55%	73.72%	78.52%	78.77%	72.00%
50 and over % with dose 2	50.82%	62.46%	52.41%	47.95%	47.86%	46.19%	55.27%	51.64%	47.90%
70 and over - dose 1	2,557,342	39,727	860,768	9,477	493,925	202,142	68,127	633,060	231,498
70 and over - dose 2	1,826,267	30,184	607,304	7,147	357,475	137,420	51,532	454,326	168,064
70 and over - population	2,934,706	39,946	962,606	12,343	577,767	240,514	77,155	743,519	280,281
70 and over % with dose 1	87.14%	99.45%	89.42%	76.78%	85.49%	84.05%	88.30%	85.14%	82.59%
70 and over % with dose 2	62.23%	75.56%	63.09%	57.90%	61.87%	57.14%	66.79%	61.10%	59.96%

*National population will not equal sum of listed jurisdictions due to a small number of people counted in national population residing in some 'other' territories

Doses sourced from Australian Immunisation Register, population from ABS ERP June 2020

Vaccinations by location

Cumulative total doses administered vs state populations*

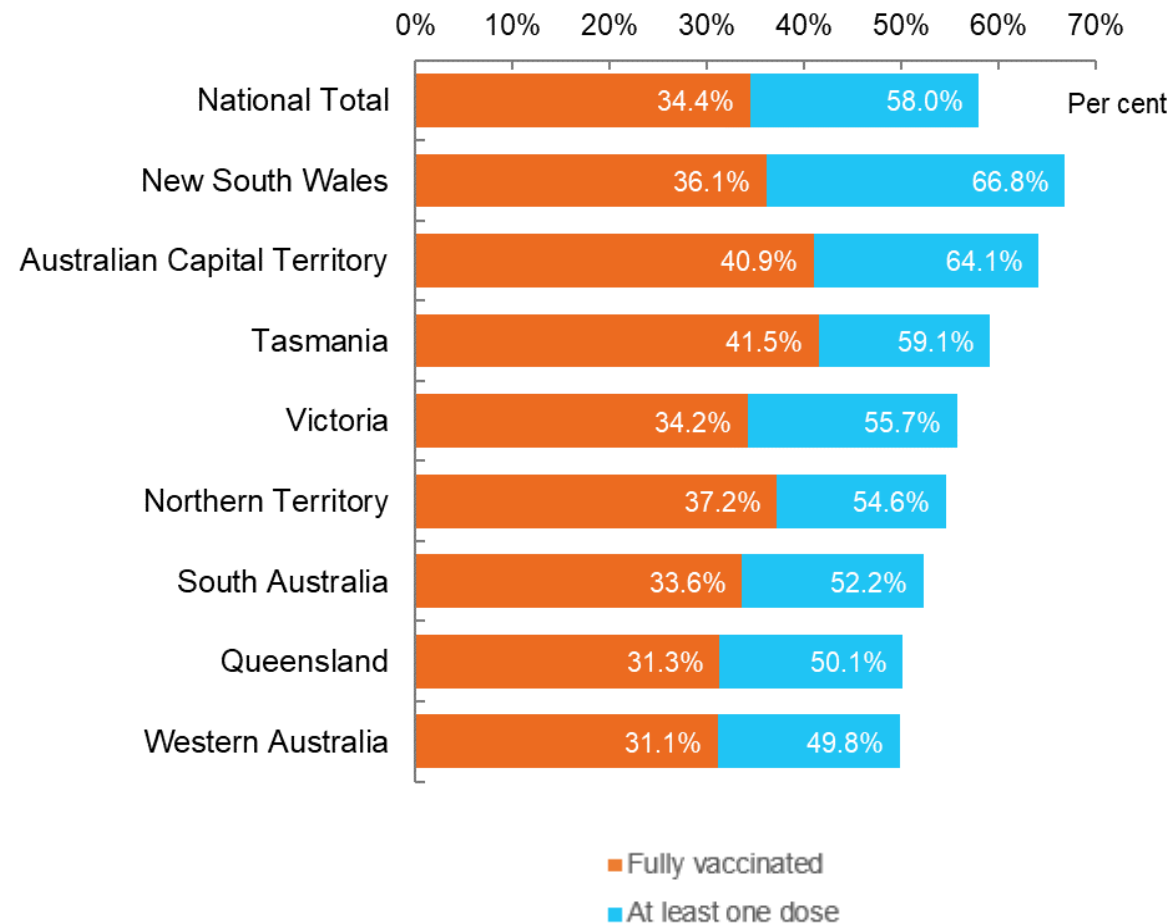


*Not an indication of percentage vaccinated, numbers will exceed 100 due to multiple doses required per person of the population

Data as at:
29 Aug 2021

Australia's COVID-19
Vaccine Roadmap

First and Second Doses by state of residence



Aboriginal and Torres Strait Islander peoples

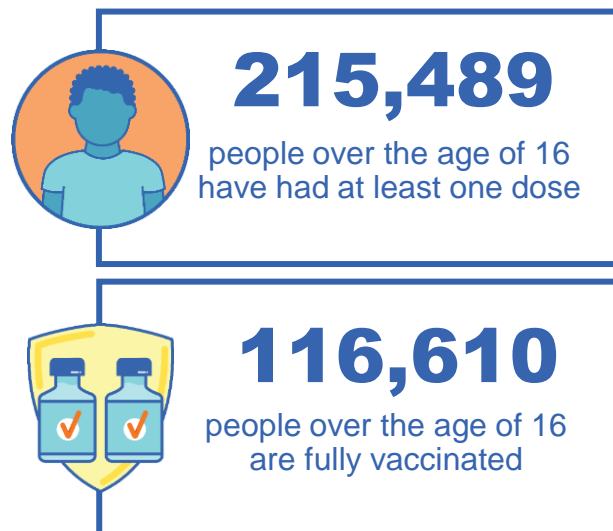
Number of people vaccinated

Data as at:
29 Aug 2021
Updated weekly
Data reconciliation underway

Australia's COVID-19
Vaccine Roadmap

162 Aboriginal community controlled health services (ACCHS)

0#	45	26	38	11	3	21	18
ACT	NSW	NT	QLD	SA	TAS	VIC	WA



5,241 people with at least one dose
2,429 people fully vaccinated

residing in other territories or with missing residential information
Source: Australian Immunisation Register

*Identifying as Aboriginal and Torres Strait Islander is optional and the estimated population may be under reported.

**Includes all Aboriginal and Torres Strait Islander peoples who have received a vaccination, not limited to those administered in an ACCHS setting

***Updated weekly.

#ACCHS in the ACT are currently operating as a Commonwealth Vaccine Clinics so not included to avoid double counting

Data as at:
29 Aug 2021

Commonwealth primary care



Primary care vaccine administration sites

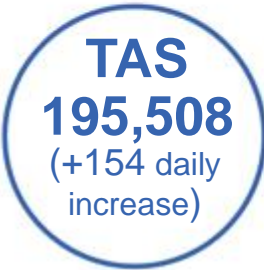
5,347	137	162	2,925
GPs	CVCs	ACCHS	Pharmacies



10,320,608 total vaccine doses administered primary care settings as at 29 August
+ 40,609 recorded in the last 24 hours

Primary care vaccinations by provider type

	Doses administered	Daily increase	7 day increase
General Practice* includes other Commonwealth	10,025,999	37,786	935,617
Pharmacy	294,609	2,823	104,033



52,355 doses administered to persons residing in other territories or with missing residential information

*General practice includes Commonwealth Vaccination Clinics, Aboriginal Community Health Centres, Royal Flying Doctor Service and other Commonwealth vaccination facilities

Source: Australian Immunisation Register

Data as at:
29 Aug 2021

Commonwealth aged care and disability doses administered



People vaccinated in aged care
and residential disability facilities

452,791

People with a first dose

311,069

People fully vaccinated

Residential aged care
facilities

2,569

Sites visited for first doses

2,568

Sites visited for second doses



764,981

(+ 2,594 last 24 hours)

Total vaccine doses administered in aged care
and disability facilities as at 29 August

Number of doses administered as part of the Commonwealth aged and disability care rollout

NSW
345,039

(+1,183 daily
increase)

VIC
150,986

(+488 daily
increase)

QLD
116,490

(+548 daily
increase)

WA
53,538

(+34 daily
increase)

TAS
15,574

(+106 daily
increase)

SA
48,482

(+184 daily
increase)

ACT
9,102

(+15 daily
increase)

NT
5,242

(+4 daily
increase)

20,528

doses administered to persons
residing in other territories or with
missing residential information

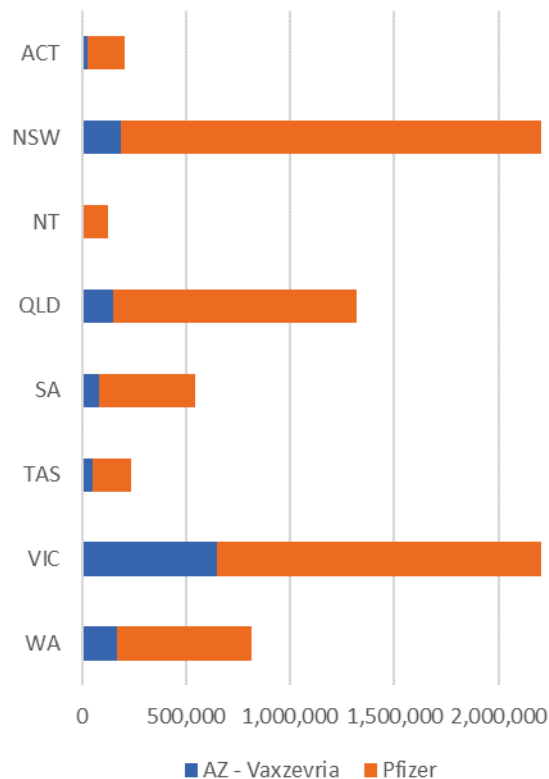
*Sourced from the Australian Immunisation Register. Includes all persons vaccinated at participating residential aged care, disability and related industry settings.

**State level breakdown indicates the residential location and may not align to the state in which the vaccination occurred.

Data as at:
29 Aug 2021

Jurisdiction administered

Total vaccine doses administered in State and Territory clinics as at 29 August



8,000,152 total vaccine doses administered
in State and Territory clinics as at 29 August
+ **115,225** recorded in the last 24 hours
+ **840,275** recorded in the last 7 days

NSW
2,426,195
(+54,568 daily increase)

VIC
2,332,758
(+27,588 daily increase)

QLD
1,318,945
(+14,706 daily increase)

WA
814,712
(+10,550 daily increase)

TAS
235,629
(+2,672 daily increase)

SA
542,726
(+4,627 daily increase)

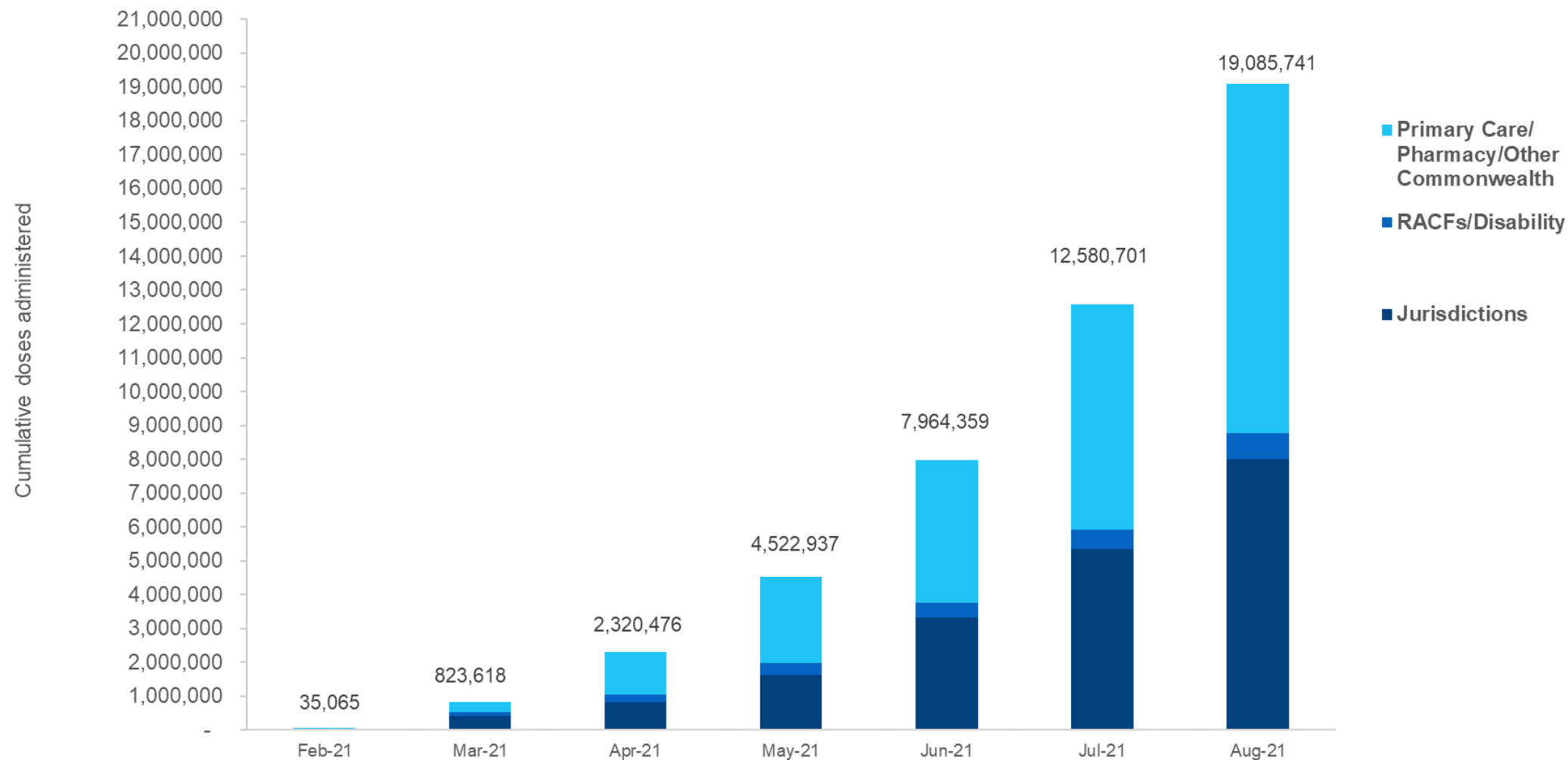
ACT
204,723
(+34 daily increase)

NT
124,464
(+480 daily increase)

*Sourced from the Australian Immunisation Register and self-reported data. Numbers are calculated as difference in daily cumulative reported numbers to allow for historical corrections in all self-reported data sources.

Cumulative doses administered by channel

Data as at:
29 Aug 2021



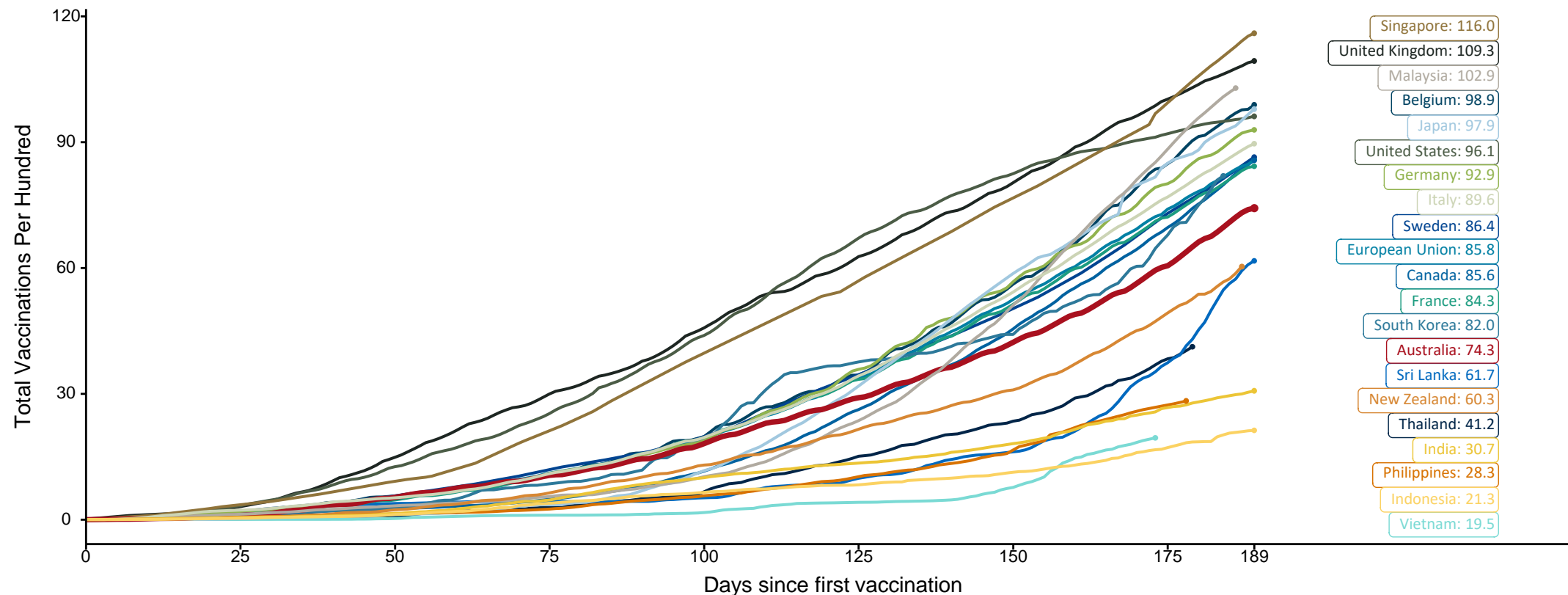
Source: Australian Immunisation Register

Doses at equivalent stages of rollout (Day 189)

Data as at:
29 Aug 2021

The x-axis is truncated at the length of Australia's vaccination program. Countries with intermittent reporting have had their doses per 100 imputed to Australia's current stage of rollout. Israel excluded as it is beyond scale of the graph

Cumulative doses administered (29 Aug): **19,085,741**

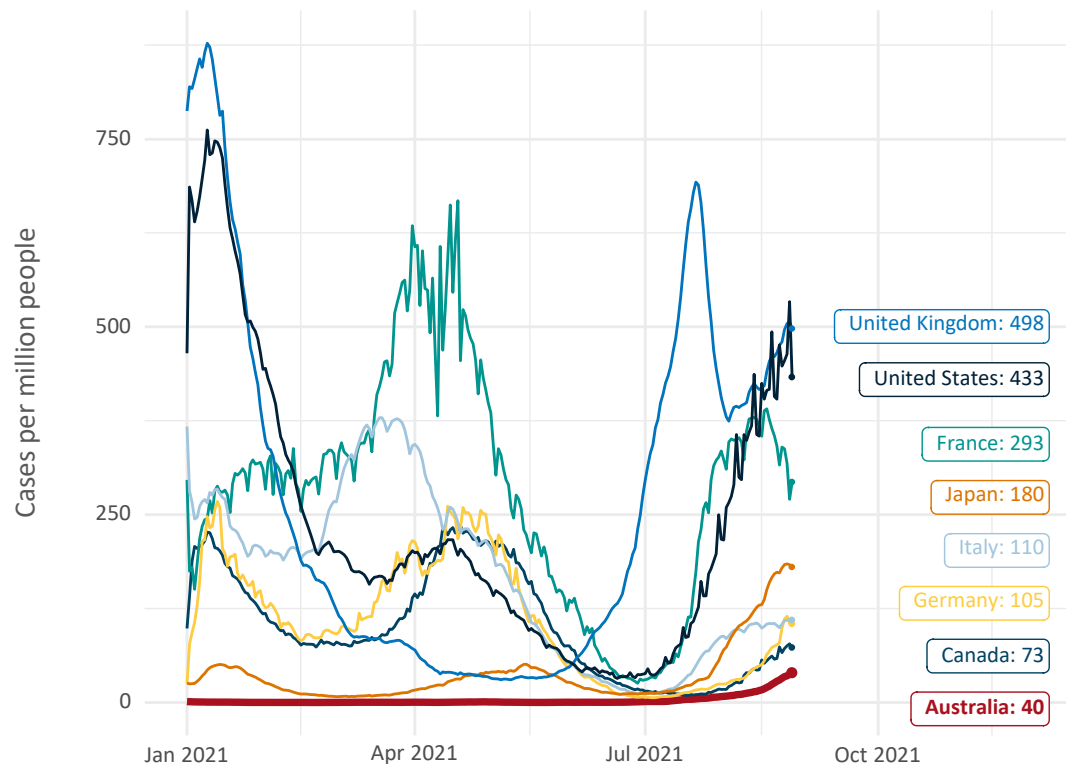


Source: Department of Health (Australia), Our World in Data (international)
Latest data: 29 August

International data – COVID-19

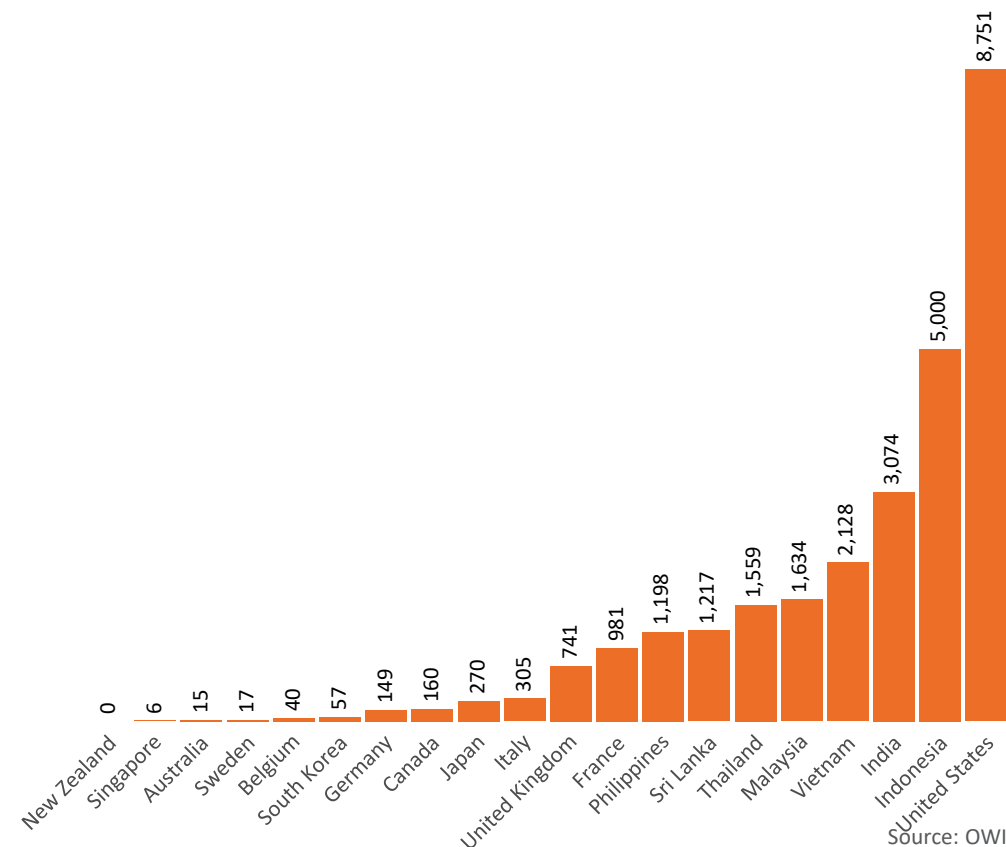
Data as at:
29 Aug 2021

New daily cases per million in 2021, Australia and G7 countries
Smoothed - 7 day average



Source: OWID
Data downloaded: 30 Aug 2021 09:09
Latest data: 28 Aug 2021

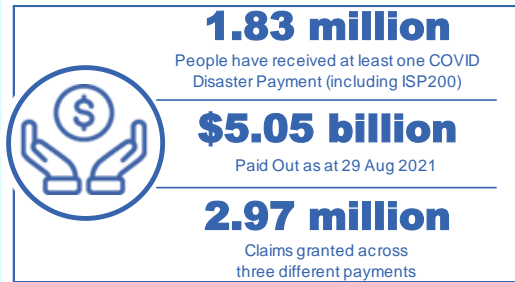
COVID-19 deaths in past 7 days - Australia and select countries



Source: OWID
Data downloaded: 30 Aug 2021 09:09
Latest data: 28 Aug 2021

Data as at midnight:
29 Aug 2021

Pandemic Response Payments



COVID Disaster Payment:	2.96 million claims received - 1.69 million individuals paid a total of \$4.92 billion.
\$200 Income Support Payment:	164,000 claims received - 131,000 individuals paid a total of \$71.09 million.
Pandemic Leave Disaster Payment:	47,000 claims received - 40,000 individuals paid a total of \$63.89 million.



**THREE
PAYMENTS
AVAILABLE**

COVID Disaster Payment
assisting during a lockdown event in a Commonwealth hotspot.

Income Support Payment \$200
for income support recipients who lost at least 8 hours of work.

Pandemic Leave Disaster Payment
for those who have to self-isolate, quarantine or care.

For more information visit:
servicesaustralia.gov.au

COVID-19 DISASTER PAYMENTS

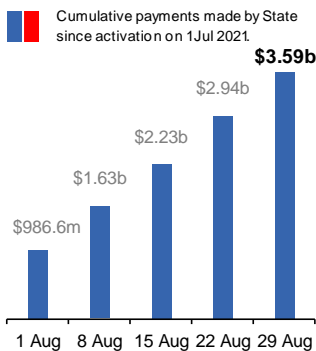
New South Wales

Active lockdown since 24 Jun

954,000 people have received at least one COVID Disaster Payment.

\$3.59b paid out as at 29 Aug 2021.

\$657m paid in initial and reoccurring payments in the week ending 29 Aug 2021.



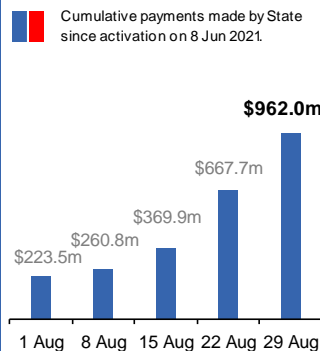
Victoria

Active lockdown (#6) since 6 Aug

413,000 people have received at least one COVID Disaster Payment.

\$962.0m paid out as at 29 Aug 2021.

\$294m paid in initial and reoccurring payments in the week ending 29 Aug 2021.



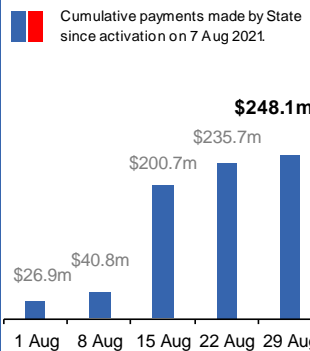
Queensland

Lockdown from 31 Jul – 11 Aug
Claiming period ends 28 Aug

192,000 people have received at least one COVID Disaster Payment.

\$248.1m paid out as at 29 Aug 2021.

\$12m paid in initial and reoccurring payments in the week ending 29 Aug 2021.



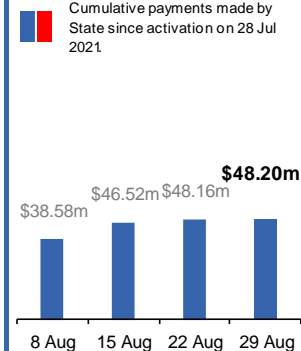
South Australia

Lockdown from 21 – 27 Jul
Claiming period ends 17 Aug

86,000 people have received at least one COVID Disaster Payment.

\$48.2m paid out as at 29 Aug 2021.

\$43,000 paid in initial payments in the week ending 29 Aug 2021.



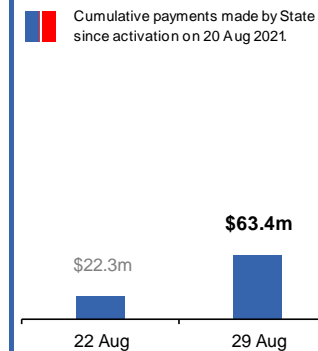
Australian Capital Territory

Active lockdown since 12 Aug

49,000 people have received at least one COVID Disaster Payment.

\$63.4m paid out as at 29 Aug 2021.

\$41m paid in initial payments in the week ending 29 Aug 2021.



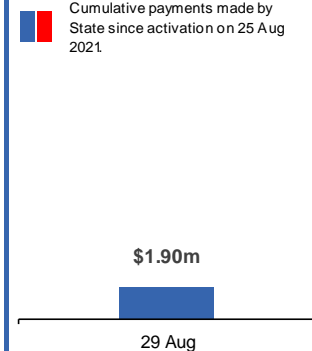
Northern Territory

Lockdown from 18 – 20 Jul
Claiming period ends 13 Sep

2,928 people have received at least one COVID Disaster Payment.

\$1.90m paid out as at 29 Aug 2021.

\$1.9m paid in initial payments in the week ending 29 Aug 2021.



Administration and Utilisation

Doses as at Week 27

	Ordered (including coming week)	Available (delivered weeks 1-26, until 22 August)	Administered (weeks 1-27 until 29 August)	Available minus Administered	Estimated Dose Utilisation % (see note)
NSW	3,220,450	2,949,010	2,426,195	522,815	92%
VIC	2,946,260	2,643,230	2,332,758	310,472	98%
QLD	1,651,020	1,458,430	1,318,945	139,485	Fully utilised
WA	942,718	830,398	814,712	15,686	Fully utilised
SA	716,110	604,040	542,726	61,314	Fully utilised
TAS	301,030	283,480	235,629	47,851	93%
NT	182,504	161,986	124,464	37,522	87%
ACT	241,598	210,118	204,723	5,395	Fully utilised
Jurisdiction delivered total	10,201,690	9,140,692	8,000,152	1,140,540	98%
Commonwealth Aged Care & Disability	821,248	779,644	764,981	14,663	N/A
Commonwealth Primary Care	14,340,237	12,987,067	10,320,608	2,666,459	89%
Total	25,363,175	22,907,403	19,085,741	3,821,662	93%

About this data

- Ordered – Total doses delivered to sites. Based on logistics provider data. This figure includes doses allocated for administration in the coming week.
- Available – total doses that could have been administered to date, less doses re-distributed from States & Territories to Primary Care or Aged Care & Disability (i.e. does not include those deliveries recently received, and intended for use in the coming week).
- Administered – Doses administered as at 29 August 2021.
- The dose utilisation is calculated based on the total doses administered and a small % wastage in line with international standards in relation to total available doses.
- For Aged Care & Disability, the doses available for administration is for the full period (Weeks 1-27).
- Aged Care & Disability utilisation is not provided as the in-reach rollout is demand-based, with vaccines ordered based on resident numbers.