



**Australian Government**  
**Operation COVID Shield**

# COVID-19 Vaccine Roll-out

29 August 2021

Data as at:  
28 Aug 2021

## Total vaccine doses



**18,927,313** total vaccine  
doses administered nationally as at 28 August  
**+220,686** recorded in the last 24 hours



**11,850,205**

people have had at least one  
dose

**57.5%**

of people over the age of 16  
have had at least one dose



**7,044,253**

people are fully vaccinated

**34.2%**

of people over the age of 16 are  
fully vaccinated

**NSW**  
**6,649,399**  
(+68,410 daily  
increase)

**VIC**  
**4,852,288**  
(+85,806 daily  
increase)

**QLD**  
**3,389,617**  
(+30,669 daily  
increase)

**WA**  
**1,713,949**  
(+17,859 daily  
increase)

**TAS**  
**440,085**  
(+4,714 daily  
increase)

**SA**  
**1,229,848**  
(+9,808 daily  
increase)

**ACT**  
**444,582**  
(+2,000 daily  
increase)

**NT**  
**207,545**  
(+1,420 daily  
increase)

\*Administration state breakdown indicates state in which a vaccine was administered

\*\*Overall dose count includes instances of more than two doses per person in a small number of cases.

Data as at:  
28 Aug 2021

**153,194**  
doses administered to  
persons residing in  
other territories or with  
missing residential  
information

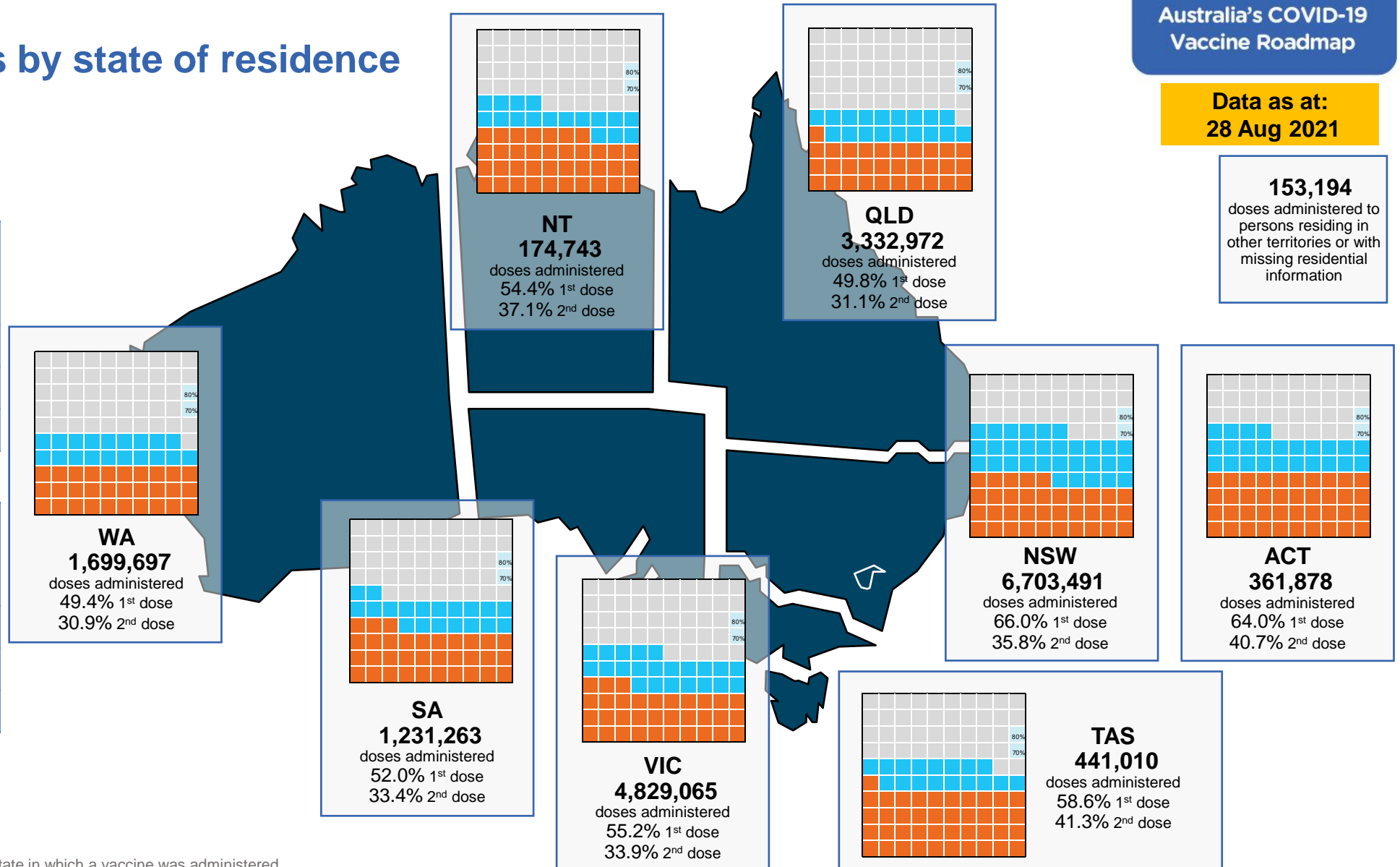
## Vaccinations by state of residence

### First doses

Age Today	4 weeks ago	8 weeks ago
16+	57.5%	41.4%
50+	78.2%	66.3%
70+	87.1%	80.1%

### Fully vaccinated

Age Today	4 weeks ago	8 weeks ago
16+	34.2%	19.5%
50+	50.5%	27.3%
70+	62.1%	42.9%



\*Residential state may differ from the state in which a vaccine was administered

## Commonwealth and Jurisdiction vaccine doses administered

Data as at:  
28 Aug 2021

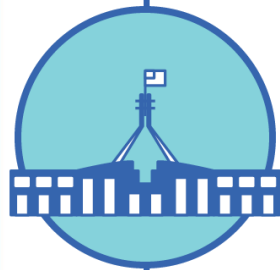


**7,884,927**

doses administered by state  
and territory facilities

**+ 122,597**

recorded in the last 24 hours



**11,042,386**

doses administered by  
commonwealth facilities

**+ 98,089**

recorded in the last 24 hours

**10,279,999** total vaccine doses  
administered in primary care settings

**762,387** total vaccine doses  
administered in aged care and disability  
settings



**18,927,313** total vaccine

doses administered nationally as at 28 August

**+ 220,686** recorded in the last 24 hours

NSW	Jurisdictions	Commonwealth
Cumulative	2,371,627	4,277,772
Daily increase	26,756	41,654

VIC	Jurisdictions	Commonwealth
Cumulative	2,305,170	2,547,118
Daily increase	57,553	28,253

QLD	Jurisdictions	Commonwealth
Cumulative	1,304,239	2,085,378
Daily increase	18,868	11,801

WA	Jurisdictions	Commonwealth
Cumulative	804,162	909,787
Daily increase	10,883	6,976

TAS	Jurisdictions	Commonwealth
Cumulative	232,957	207,128
Daily increase	2,748	1,966

SA	Jurisdictions	Commonwealth
Cumulative	538,099	691,749
Daily increase	4,956	4,852

ACT	Jurisdictions	Commonwealth
Cumulative	204,689	239,893
Daily increase	38	1,962

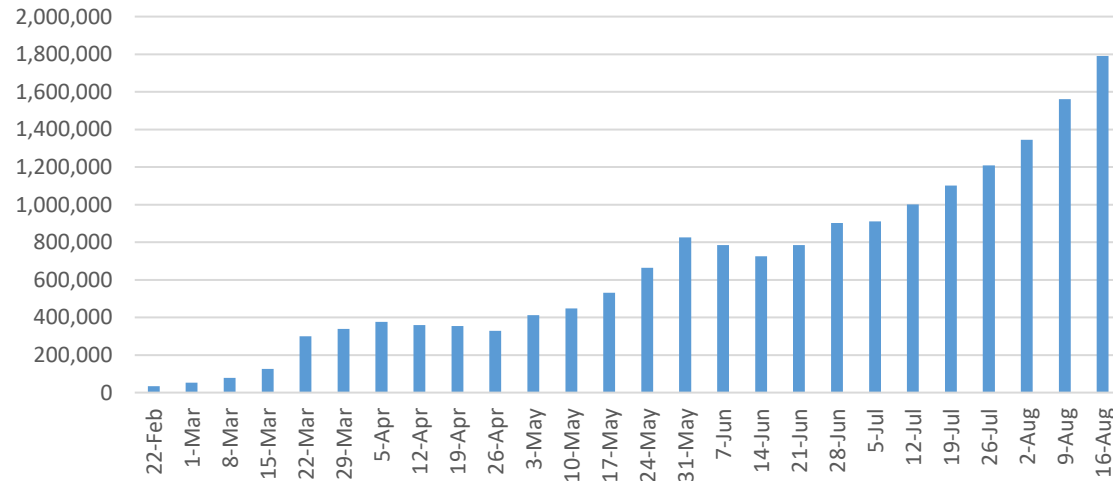
NT	Jurisdictions	Commonwealth
Cumulative	123,984	83,561
Daily increase	795	625

# Vaccine milestone charts

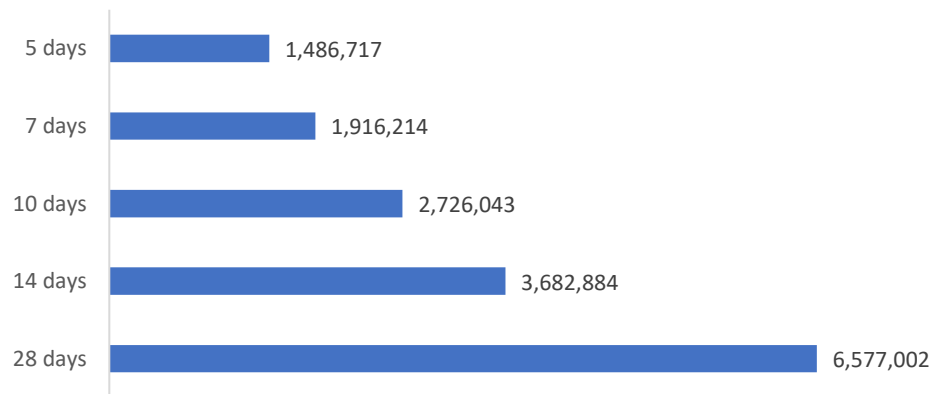
Data as at:  
28 Aug 2021

Australia's COVID-19  
Vaccine Roadmap

Jabs in arms by week

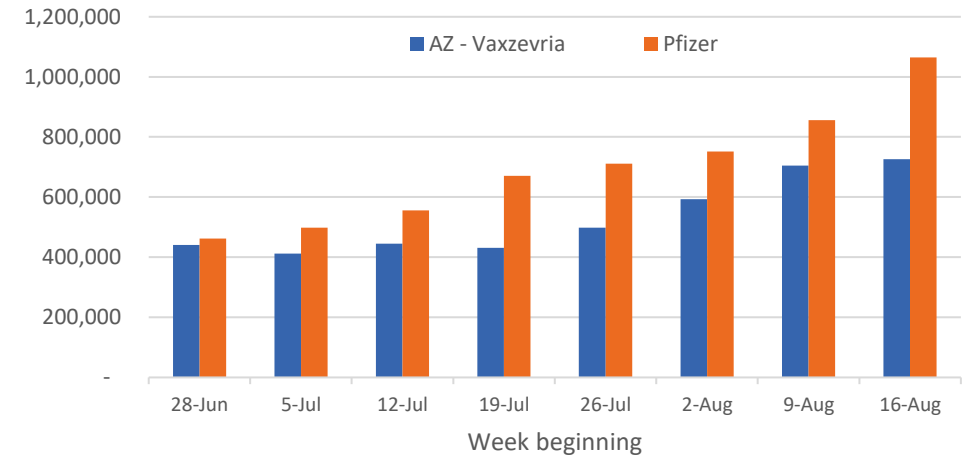


Doses reported

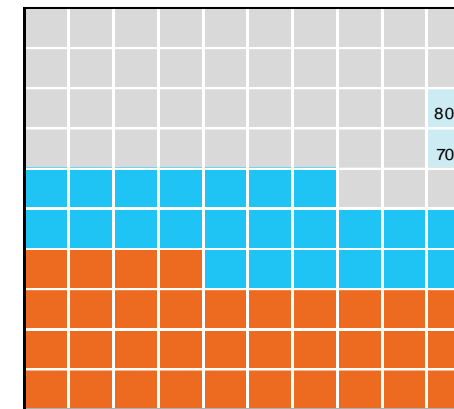


\*Sourced from the Australian Immunisation Register.

Doses by administration week and vaccine type



Eligible population percentage coverage



1st dose: 57.5% 2nd dose: 34.2%

\*Each square represents 1% of the national population. Squares are filled as milestones are achieved.

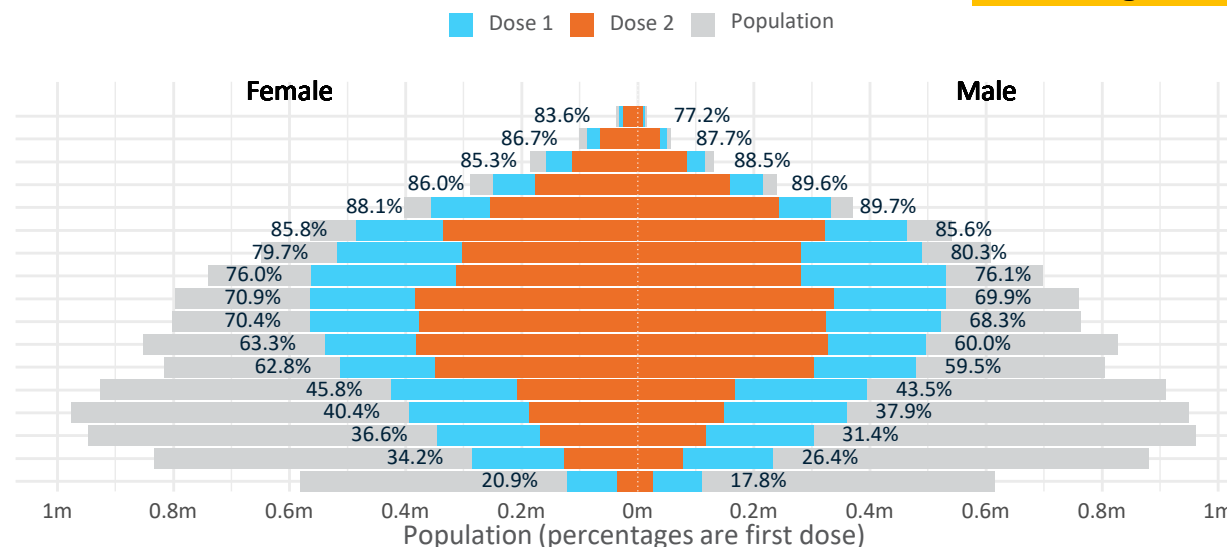
# Doses by age and sex

First and second doses by age and sex, using ABS age brackets

Australia's COVID-19  
Vaccine Roadmap

Data as at:  
28 Aug 2021

Age	Dose 1	Dose 2
95+	43,320 (81.9%)	33,164 (62.7%)
90-94	138,038 (87.1%)	102,112 (64.5%)
85-89	274,144 (86.7%)	197,118 (62.3%)
80-84	463,461 (87.7%)	334,763 (63.3%)
75-79	688,235 (88.9%)	496,399 (64.2%)
70-74	947,985 (85.8%)	658,540 (59.6%)
65-69	1,007,571 (80.1%)	584,956 (46.5%)
60-64	1,093,614 (76.1%)	592,733 (41.3%)
55-59	1,096,130 (70.5%)	721,483 (46.4%)
50-54	1,086,522 (69.4%)	700,342 (44.8%)
45-49	1,035,010 (61.7%)	709,056 (42.3%)
40-44	992,620 (61.3%)	652,016 (40.2%)
35-39	821,110 (44.7%)	374,770 (20.4%)
30-34	757,677 (39.4%)	335,498 (17.4%)
25-29	653,602 (34.3%)	285,426 (15.0%)
20-24	520,232 (30.4%)	205,767 (12.0%)
16-19	230,934 (19.3%)	60,110 (5.0%)



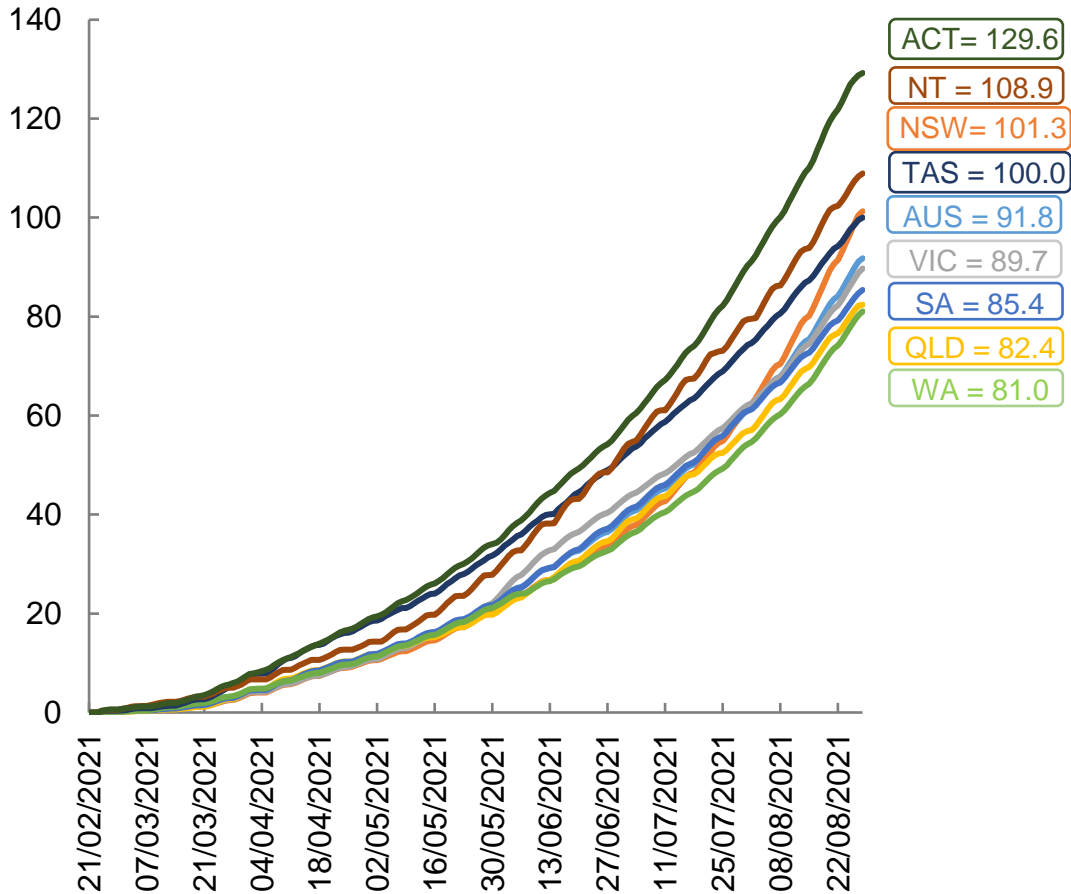
	AUS	ACT	NSW	NT	QLD	SA	TAS	VIC	WA
16 and over - dose 1	11,850,205	220,052	4,335,655	103,719	2,049,042	749,350	258,139	2,987,477	1,044,851
16 and over - dose 2	7,044,253	139,929	2,353,563	70,660	1,278,711	480,571	181,777	1,835,226	652,778
16 and over - population	20,619,959*	344,037	6,565,651	190,571	4,112,707	1,440,400	440,172	5,407,574	2,114,978
16 and over % with dose 1	57.47%	63.96%	66.04%	54.43%	49.82%	52.02%	58.65%	55.25%	49.40%
16 and over % with dose 2	34.16%	40.67%	35.85%	37.08%	31.09%	33.36%	41.30%	33.94%	30.86%
50 and over - dose 1	6,839,020	117,738	2,302,514	42,883	1,291,278	496,413	172,373	1,737,711	636,074
50 and over - dose 2	4,421,610	79,096	1,464,896	29,824	838,520	309,389	121,299	1,132,086	422,500
50 and over - population	8,749,703	127,802	2,807,793	62,280	1,758,855	674,384	220,036	2,211,211	885,370
50 and over % with dose 1	78.16%	92.13%	82.00%	68.86%	73.42%	73.61%	78.34%	78.59%	71.84%
50 and over % with dose 2	50.53%	61.89%	52.17%	47.89%	47.67%	45.88%	55.13%	51.20%	47.72%
70 and over - dose 1	2,555,183	39,696	859,899	9,477	493,609	202,046	68,089	632,421	231,353
70 and over - dose 2	1,822,096	30,074	606,028	7,148	357,040	137,075	51,500	452,582	167,859
70 and over - population	2,934,706	39,946	962,606	12,343	577,767	240,514	77,155	743,519	280,281
70 and over % with dose 1	87.07%	99.37%	89.33%	76.78%	85.43%	84.01%	88.25%	85.06%	82.54%
70 and over % with dose 2	62.09%	75.29%	62.96%	57.91%	61.80%	56.99%	66.75%	60.87%	59.89%

\*National population will not equal sum of listed jurisdictions due to a small number of people counted in national population residing in some 'other' territories

Doses sourced from Australian Immunisation Register, population from ABS ERP June 2020

# Vaccinations by location

Cumulative total doses administered vs state populations\*

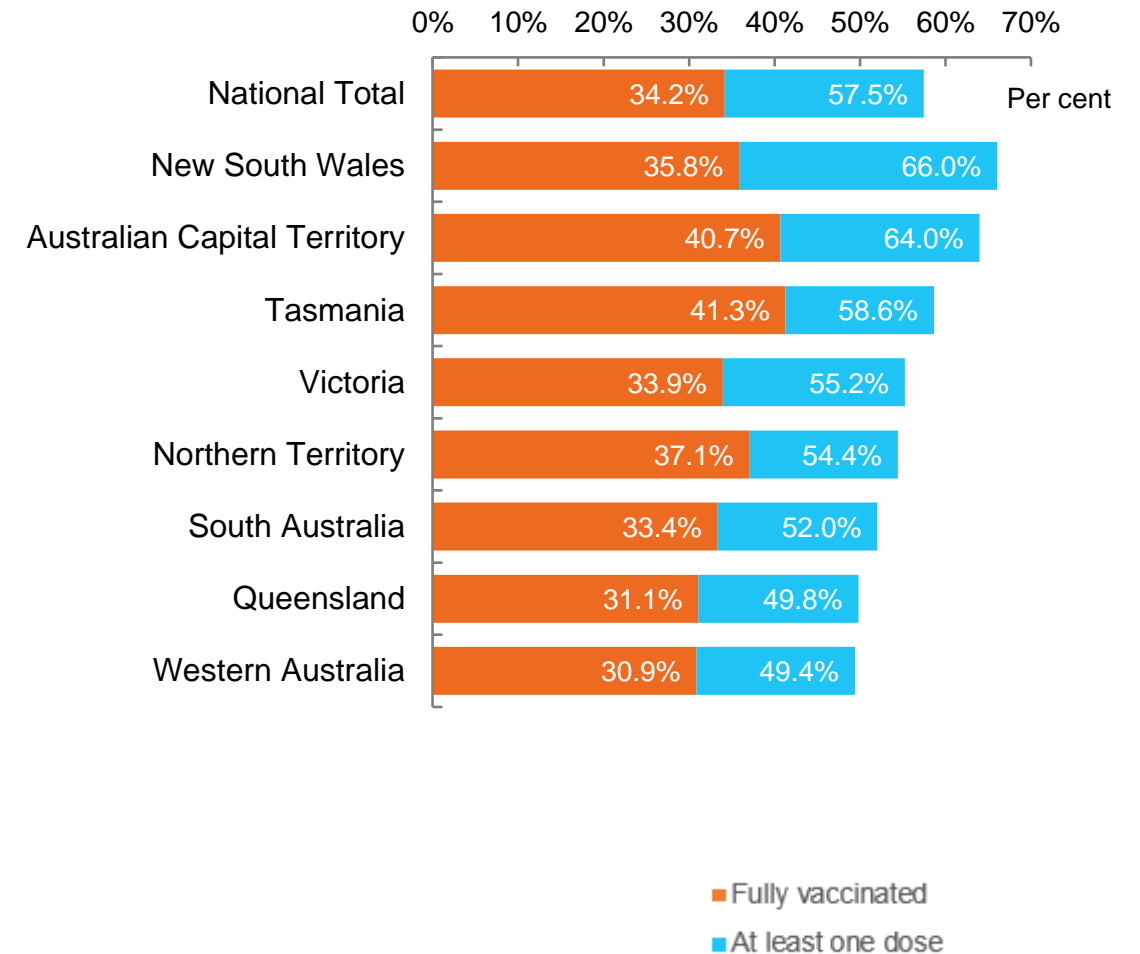


\*Not an indication of percentage vaccinated, numbers will exceed 100 due to multiple doses required per person of the population

Data as at:  
28 Aug 2021

Australia's COVID-19  
Vaccine Roadmap

First and Second Doses by state of residence



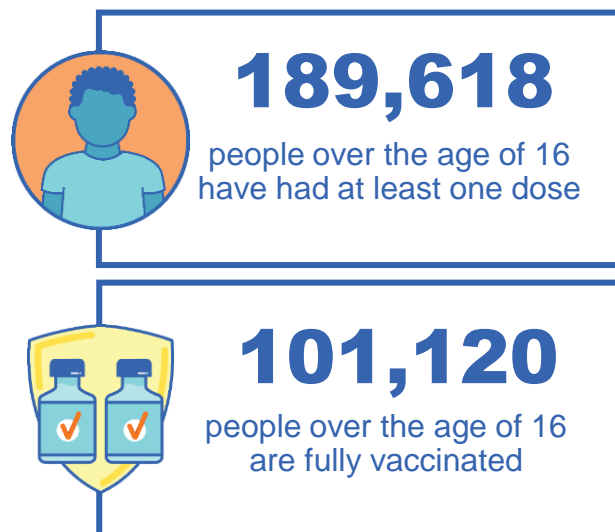


# Aboriginal and Torres Strait Islander peoples

## Number of people vaccinated

Data as at:  
22 Aug 2021  
Updated weekly  
Data reconciliation underway

Australia's COVID-19  
Vaccine Roadmap



### 159 Aboriginal community controlled health services (ACCHS)

0#	44	24	38	11	3	21	18
ACT	NSW	NT	QLD	SA	TAS	VIC	WA



**4,614** people with at least one dose  
**2,188** people fully vaccinated

residing in other territories or with missing residential information

Source: Australian Immunisation Register

\*Identifying as Aboriginal and Torres Strait Islander is optional and the estimated population may be under reported.

\*\*Includes all Aboriginal and Torres Strait Islander peoples who have received a vaccination, not limited to those administered in an ACCHS setting

\*\*\*Updated weekly.

#ACCHS in the ACT are currently operating as a Commonwealth Vaccine Clinics so not included to avoid double counting



Data as at:  
28 Aug 2021

# Commonwealth primary care



## Primary care vaccine administration sites

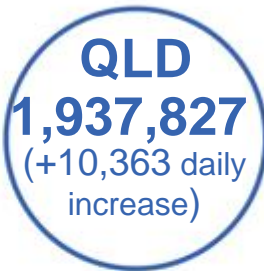
<b>5,289</b>	<b>137</b>	<b>159</b>	<b>2,593</b>
GPs	CVCs	ACCHS	Pharmacies



**10,279,999** total vaccine doses administered primary care settings as at 28 August  
**+ 92,801** recorded in the last 24 hours

## Primary care vaccinations by provider type

	Doses administered	Daily increase	7 day increase
General Practice* includes other Commonwealth	9,988,213	84,396	937,587
Pharmacy	291,786	8,405	104,298



**52,145** doses administered to persons residing in other territories or with missing residential information

\*General practice includes Commonwealth Vaccination Clinics, Aboriginal Community Health Centres, Royal Flying Doctor Service and other Commonwealth vaccination facilities

Source: Australian Immunisation Register

Data as at:  
28 Aug 2021

# Commonwealth aged care and disability doses administered



People vaccinated in aged care  
and residential disability facilities

**451,149**

People with a first dose

**310,119**

People fully vaccinated

Residential aged care  
facilities

**2,569**

Sites visited for first doses

**2,568**

Sites visited for second doses



**762,387**

(+ 5,288 last 24 hours)

Total vaccine doses administered in aged care  
and disability facilities as at 28 August

Number of doses administered as part of the Commonwealth aged and disability care rollout

**NSW**  
**343,856**

(+1,808 daily  
increase)

**VIC**  
**150,498**

(+1,104 daily  
increase)

**QLD**  
**115,942**

(+1,476 daily  
increase)

**WA**  
**53,504**

(+333 daily  
increase)

**TAS**  
**15,468**

(+70 daily  
increase)

**SA**  
**48,298**

(+276 daily  
increase)

**ACT**  
**9,087**

(+108 daily  
increase)

**NT**  
**5,238**

(+57 daily  
increase)

**20,496**

doses administered to persons  
residing in other territories or with  
missing residential information

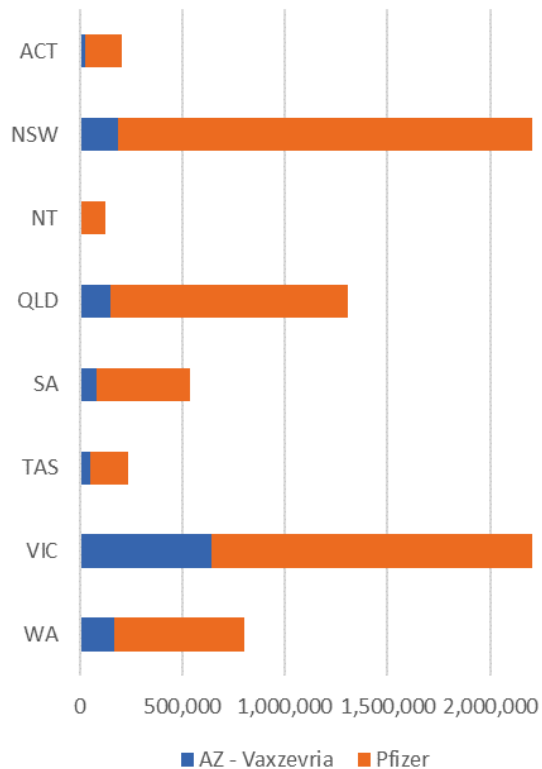
\*Sourced from the Australian Immunisation Register. Includes all persons vaccinated at participating residential aged care, disability and related industry settings.

\*\*State level breakdown indicates the residential location and may not align to the state in which the vaccination occurred.

Data as at:  
28 Aug 2021

# Jurisdiction administered

Total vaccine doses administered in State and Territory clinics as at 28 August



**7,884,927** total vaccine doses administered  
in State and Territory clinics as at 28 August  
+ **122,597** recorded in the last 24 hours  
+ **819,012** recorded in the last 7 days

**NSW**  
**2,371,627**  
(+26,756 daily  
increase)

**VIC**  
**2,305,170**  
(+57,553 daily  
increase)

**QLD**  
**1,304,239**  
(+18,868 daily  
increase)

**WA**  
**804,162**  
(+10,883 daily  
increase)

**TAS**  
**232,957**  
(+2,748 daily  
increase)

**SA**  
**538,099**  
(+4,956 daily  
increase)

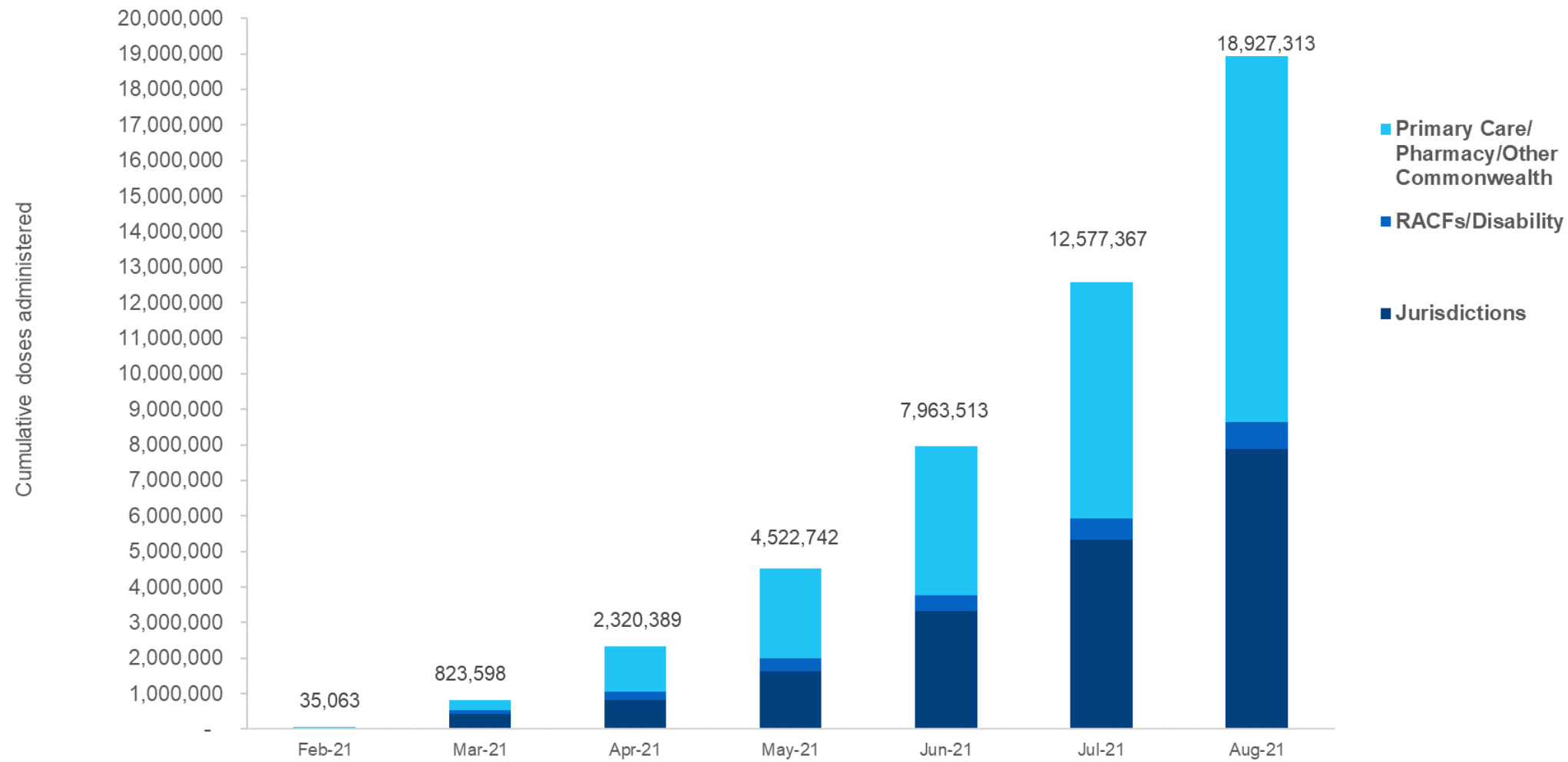
**ACT**  
**204,689**  
(+38 daily  
increase)

**NT**  
**123,984**  
(+795 daily  
increase)

\*Sourced from the Australian Immunisation Register and self-reported data. Numbers are calculated as difference in daily cumulative reported numbers to allow for historical corrections in all self-reported data sources.

## Cumulative doses administered by channel

Data as at:  
28 Aug 2021



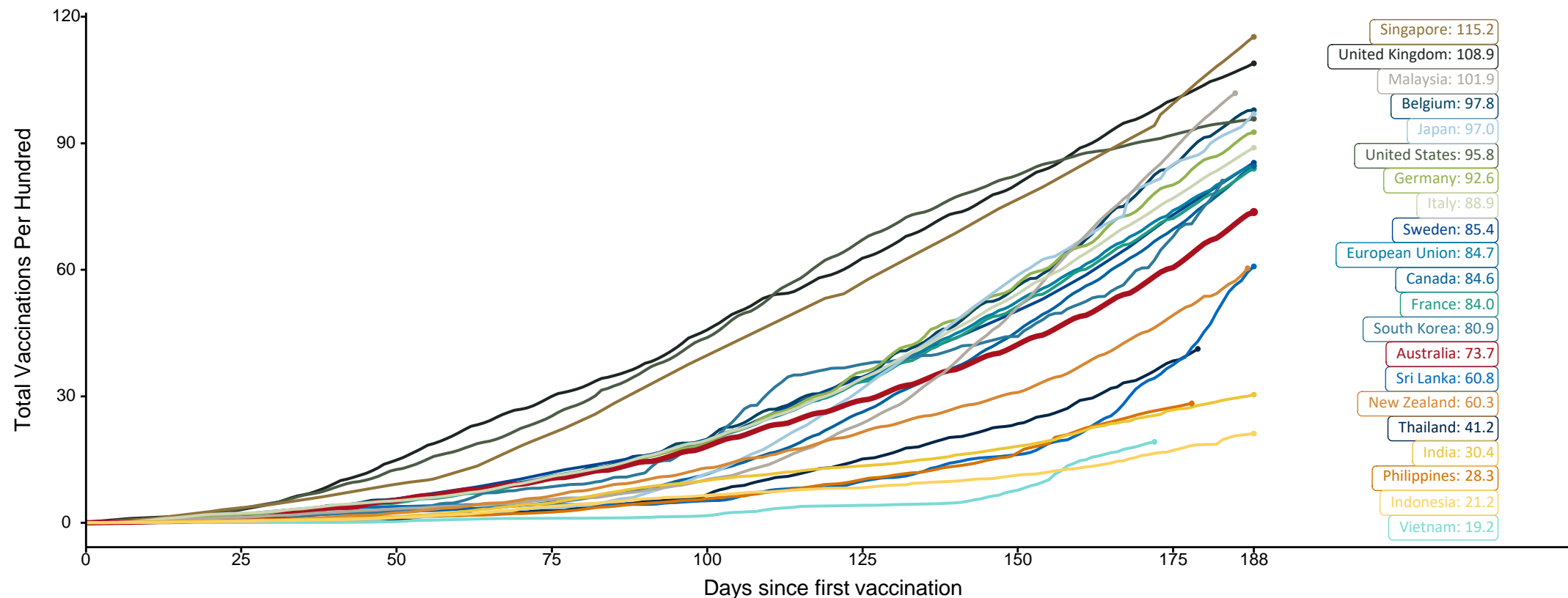
Source: Australian Immunisation Register

# Doses at equivalent stages of rollout (Day 188)

Data as at:  
28 Aug 2021

The x-axis is truncated at the length of Australia's vaccination program. Countries with intermittent reporting have had their doses per 100 imputed to Australia's current stage of rollout. Israel excluded as it is beyond scale of the graph

Cumulative doses administered (28 Aug): **18,927,313**

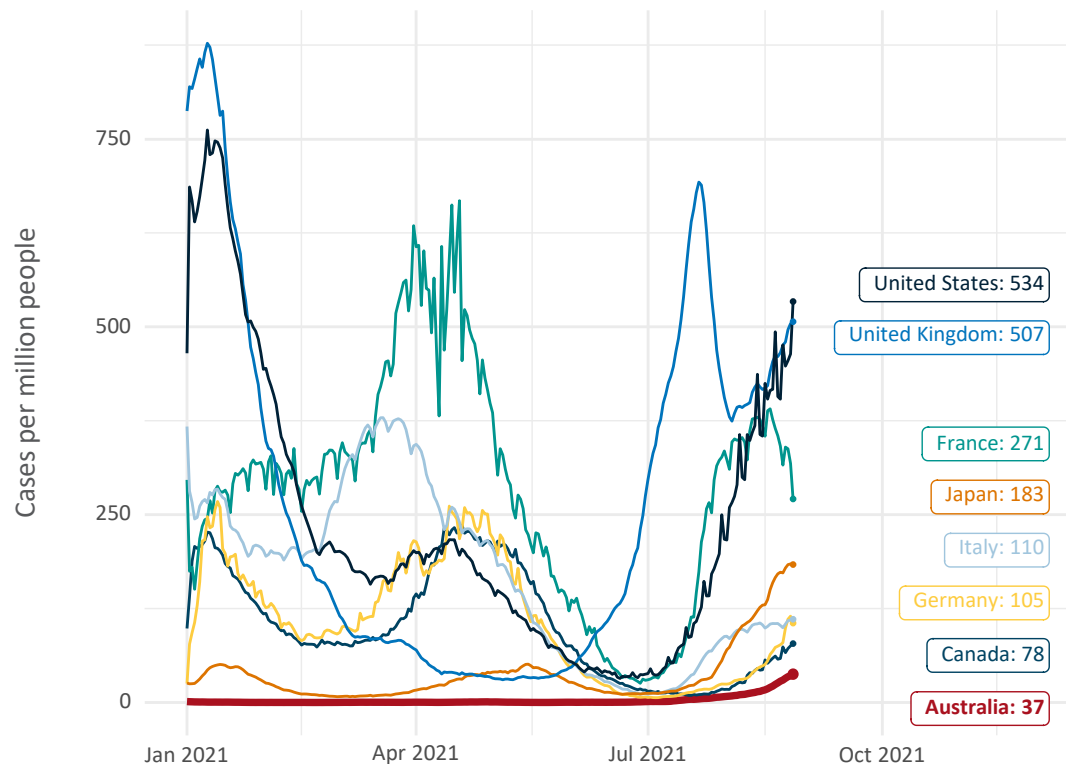


Source: Department of Health (Australia), Our World in Data (international)  
Latest data: 28 August

# International data – COVID-19

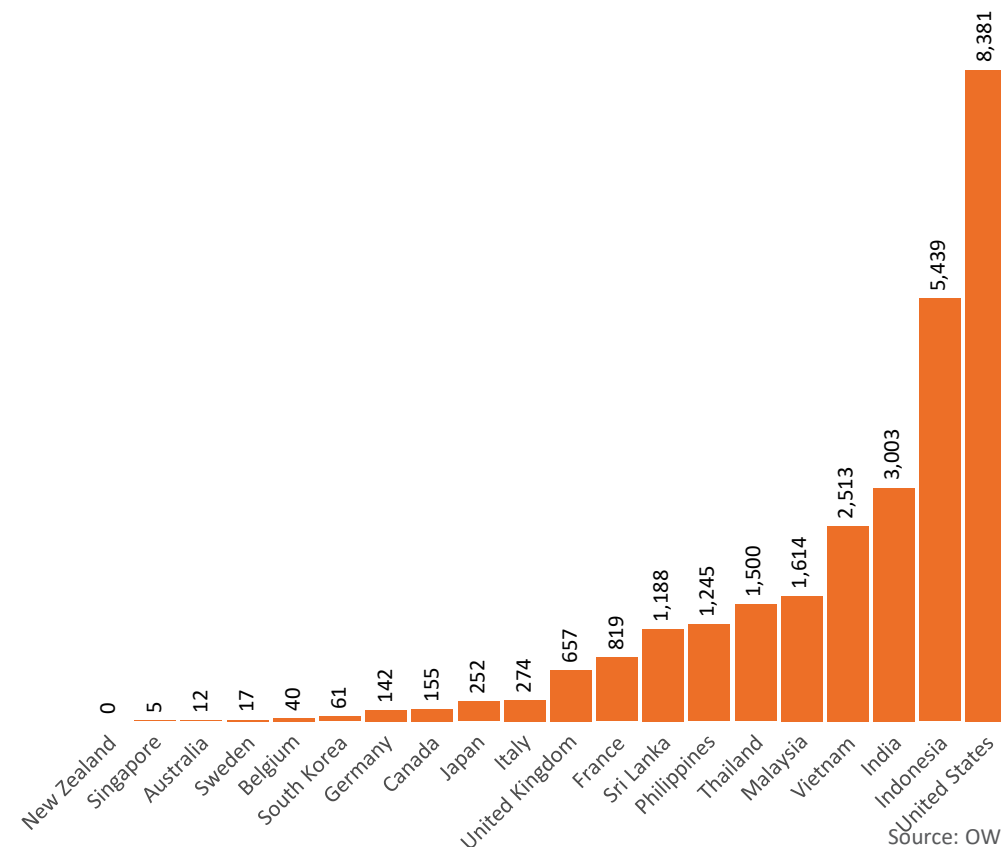
Data as at:  
28 Aug 2021

New daily cases per million in 2021, Australia and G7 countries  
Smoothed - 7 day average



Source: OWID  
Data downloaded: 29 Aug 2021 09:01  
Latest data: 27 Aug 2021

COVID-19 deaths in past 7 days - Australia and select countries



Source: OWID  
Data downloaded: 29 Aug 2021 09:01  
Latest data: 27 Aug 2021



# Pandemic Response Payments

Australia's COVID-19  
Vaccine Roadmap

Data as at midnight:  
28 Aug 2021



<b>COVID Disaster Payment:</b>	2.93 million claims received - 1.68 million individuals paid a total of \$4.45 billion.
<b>\$200 Income Support Payment:</b>	161,000 claims received - 128,000 individuals paid a total of \$70.33 million.
<b>Pandemic Leave Disaster Payment:</b>	47,000 claims received - 40,000 individuals paid a total of \$63.74 million.



## COVID Disaster Payment

assisting during a lockdown  
event in a Commonwealth  
hotspot.

## Income Support Payment \$200

for income support  
recipients who lost at  
least 8 hours of work.

## Pandemic Leave Disaster Payment

for those who have  
to self-isolate,  
quarantine or care.

For more information visit:  
[servicesaustralia.gov.au](https://servicesaustralia.gov.au)

## COVID-19 DISASTER PAYMENTS

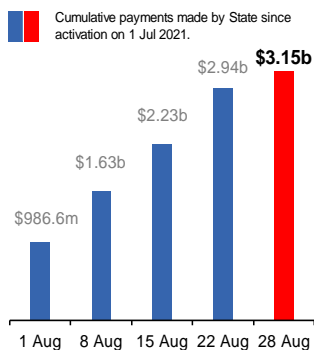
### New South Wales

Active lockdown since 24 Jun

**950,000 people have  
received at least one  
COVID Disaster Payment.**

**\$3.15b paid out as at  
28 Aug 2021.**

**\$708m paid in initial and  
reoccurring payments in the  
week ending 22 Aug 2021.**



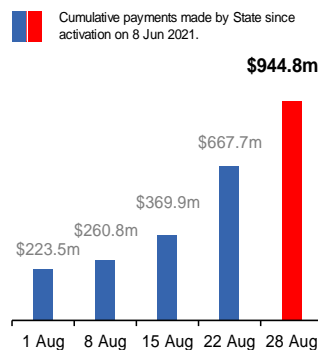
### Victoria

Active lockdown (#6) since 6 Aug

**406,000 people have  
received at least one  
COVID Disaster Payment.**

**\$944.8m paid out as at  
28 Aug 2021.**

**\$298m paid in initial and  
reoccurring payments in the  
week ending 22 Aug 2021.**



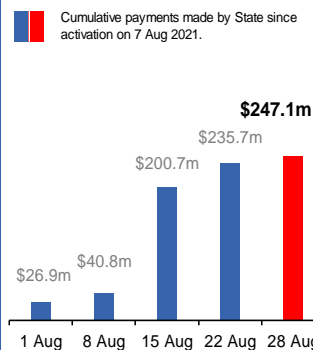
### Queensland

Lockdown from 31 Jul – 11 Aug  
Claiming period ends 28 Aug

**191,000 people have  
received at least one  
COVID Disaster Payment.**

**\$247.1m paid out as at  
28 Aug 2021.**

**\$35m paid in initial and  
reoccurring payments in the  
week ending 22 Aug 2021.**



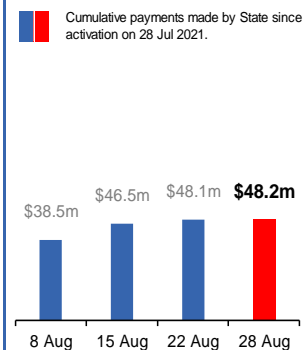
### South Australia

Lockdown from 21 – 27 Jul  
Claiming period ends 17 Aug

**86,000 people have  
received at least one  
COVID Disaster Payment.**

**\$48.2m paid out as at  
28 Aug 2021.**

**\$1.6m paid in initial  
payments in the week  
ending 22 Aug 2021.**



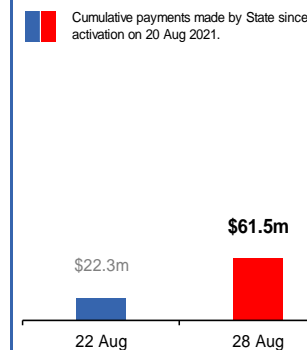
### Australian Capital Territory

Active lockdown since 12 Aug

**48,000 people have  
received at least one  
COVID Disaster Payment.**

**\$61.5m paid out as at  
28 Aug 2021.**

**\$22m paid in initial payments  
in the week ending 22 Aug  
2021.**



### Northern Territory

Lockdown from 18 – 20 Jul  
Claiming period ends 13 Sep

**2,759 people have  
received at least one  
COVID Disaster Payment.**

**\$1.79m paid out as at  
28 Aug 2021.**

