



**Australian Government**  
**Operation COVID Shield**

# COVID-19 Vaccine Roll-out

26 August 2021

Data as at:  
25 Aug 2021

## Total vaccine doses



**18,083,207** total vaccine doses administered nationally as at 25 August  
**+ 335,420** recorded in the last 24 hours



**11,391,093**

people have had at least one dose

**55.2%**

of people over the age of 16 have had at least one dose



**6,661,200**

people are fully vaccinated

**32.3%**

of people over the age of 16 are fully vaccinated

**NSW**  
**6,303,835**  
(+142,977 daily increase)

**VIC**  
**4,641,562**  
(+79,319 daily increase)

**QLD**  
**3,256,849**  
(+52,941 daily increase)

**WA**  
**1,640,419**  
(+26,947 daily increase)

**TAS**  
**424,531**  
(+5,493 daily increase)

**SA**  
**1,185,898**  
(+18,364 daily increase)

**ACT**  
**429,092**  
(+6,551 daily increase)

**NT**  
**201,021**  
(+2,828 daily increase)

\*Administration state breakdown indicates state in which a vaccine was administered  
\*\*Overall dose count includes instances of more than two doses per person in a small number of cases.

Data as at:  
25 Aug 2021

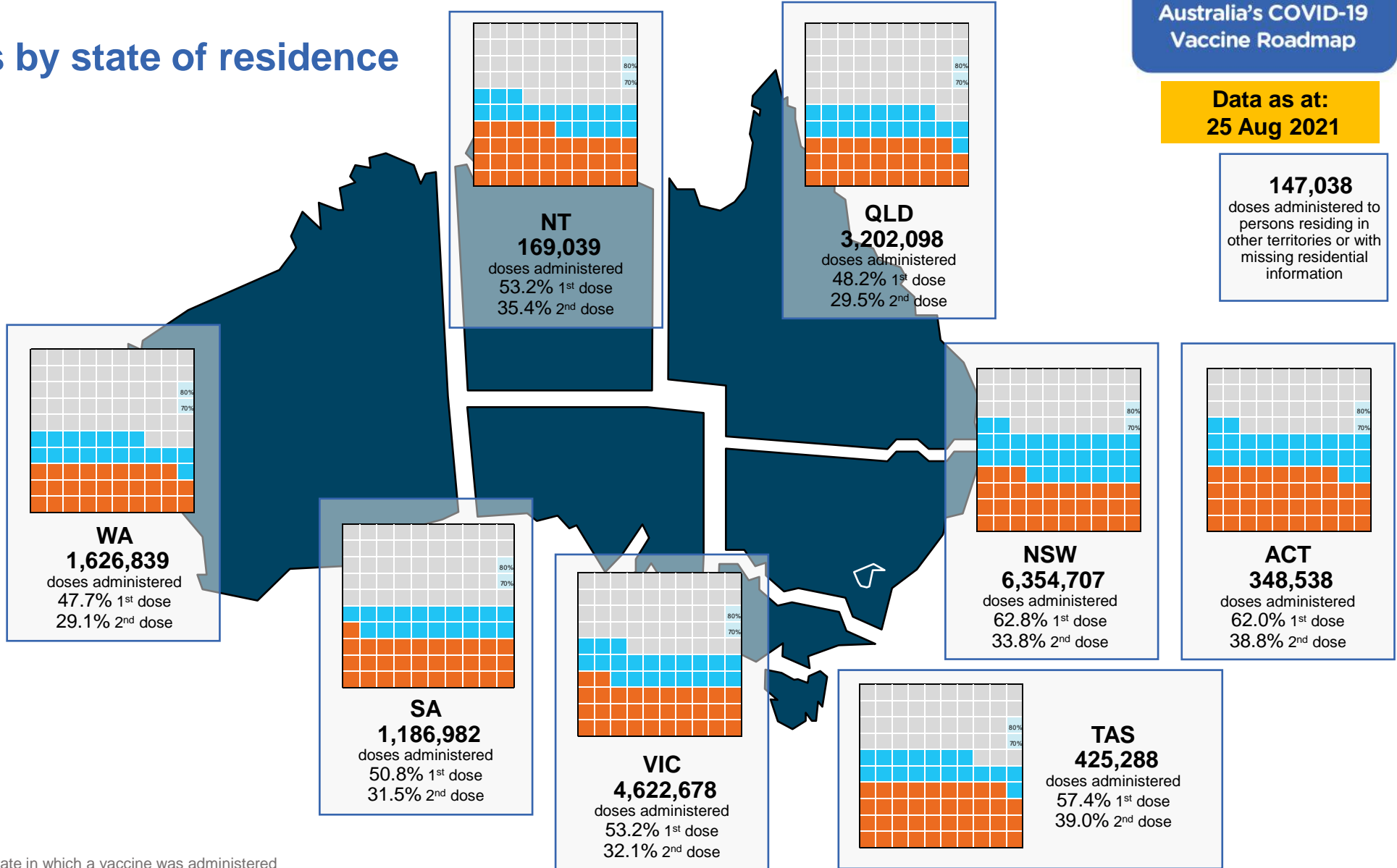
# Vaccinations by state of residence

## First doses

Age Today	4 weeks ago	8 weeks ago
16+	55.2%	40.0%
50+	76.8%	65.0%
70+	86.2%	79.2%

## Fully vaccinated

Age Today	4 weeks ago	8 weeks ago
16+	32.3%	18.2%
50+	47.6%	25.1%
70+	59.9%	40.5%



\*Residential state may differ from the state in which a vaccine was administered

## Commonwealth and Jurisdiction vaccine doses administered

Data as at:  
25 Aug 2021



**18,083,207** total vaccine doses administered nationally as at 25 August

+ **335,420** recorded in the last 24 hours



**7,530,322**

doses administered by state and territory facilities

+ **142,160**

recorded in the last 24 hours

NSW	Jurisdictions	Commonwealth
Cumulative	2,244,343	4,059,492
Daily increase	60,168	82,809

TAS	Jurisdictions	Commonwealth
Cumulative	224,521	200,010
Daily increase	2,935	2,558

VIC	Jurisdictions	Commonwealth
Cumulative	2,214,371	2,427,191
Daily increase	32,081	47,238

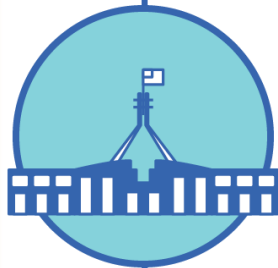
SA	Jurisdictions	Commonwealth
Cumulative	519,100	666,798
Daily increase	7,004	11,360

QLD	Jurisdictions	Commonwealth
Cumulative	1,244,215	2,012,634
Daily increase	21,196	31,745

ACT	Jurisdictions	Commonwealth
Cumulative	198,832	230,260
Daily increase	2,819	3,732

WA	Jurisdictions	Commonwealth
Cumulative	764,565	875,854
Daily increase	14,365	12,582

NT	Jurisdictions	Commonwealth
Cumulative	120,375	80,646
Daily increase	1,592	1,236



**10,552,885**

doses administered by commonwealth facilities

+ **193,260**

recorded in the last 24 hours

**9,817,786** total vaccine doses administered in primary care settings

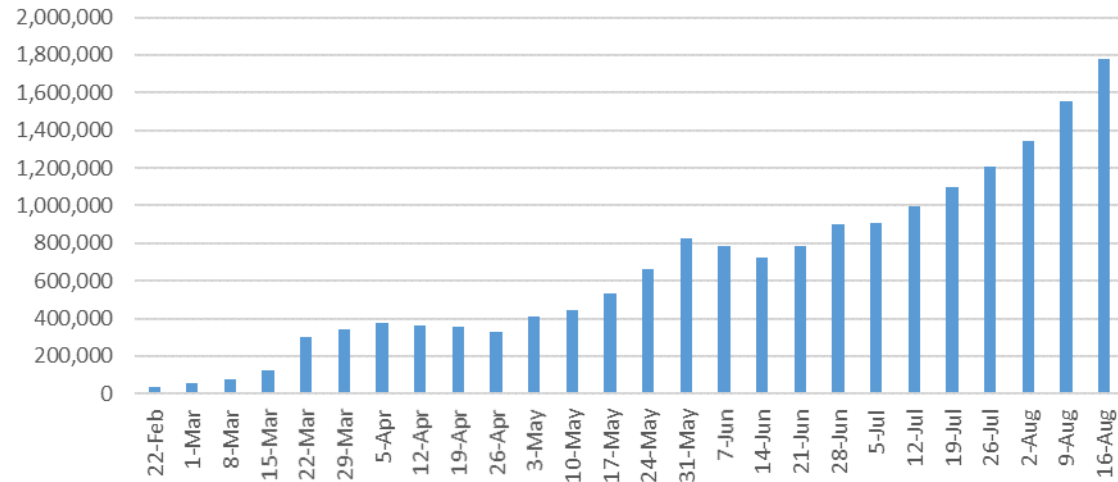
**735,099** total vaccine doses administered in aged care and disability settings

# Vaccine milestone charts

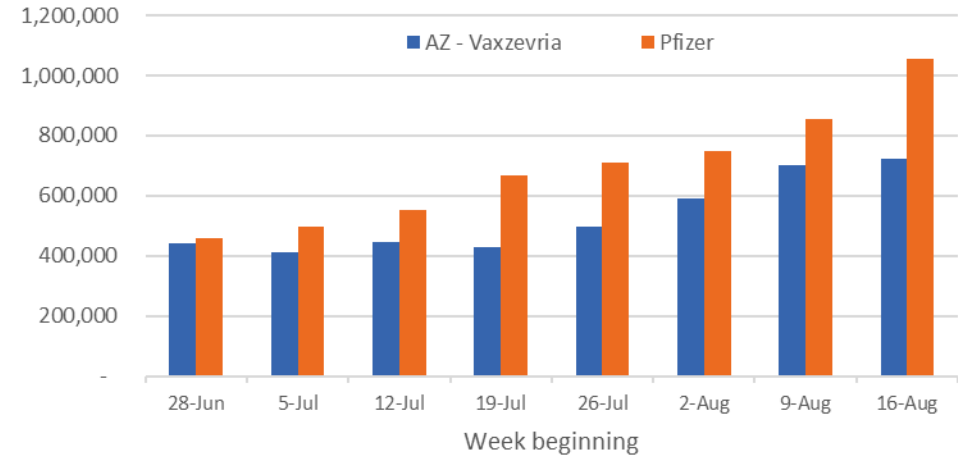
Data as at:  
25 Aug 2021

Australia's COVID-19  
Vaccine Roadmap

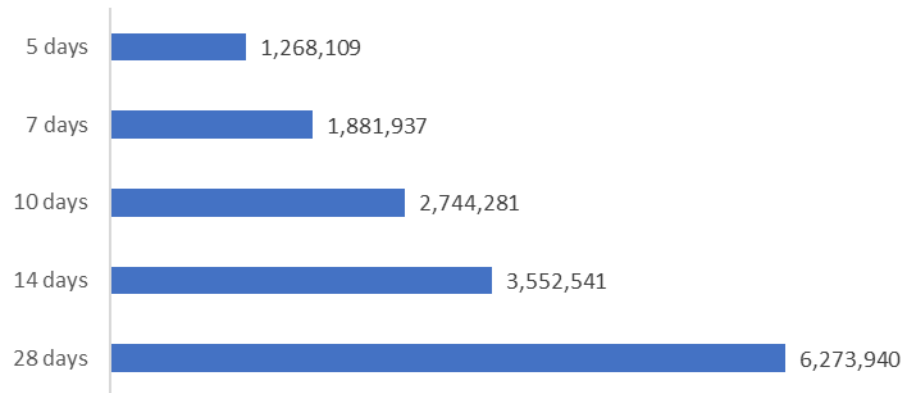
Jabs in arms by week



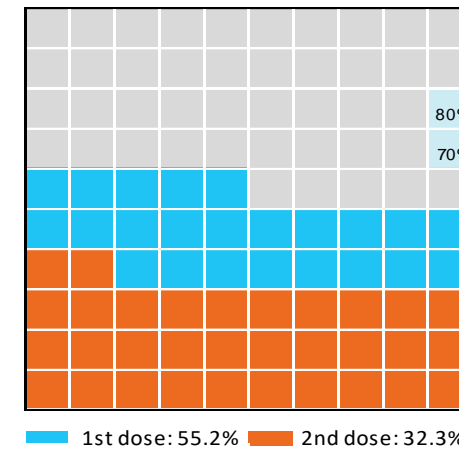
Doses by administration week and vaccine type



Doses reported



Eligible population percentage coverage



\*Each square represents 1% of the national population. Squares are filled as milestones are achieved.

\*Sourced from the Australian Immunisation Register.

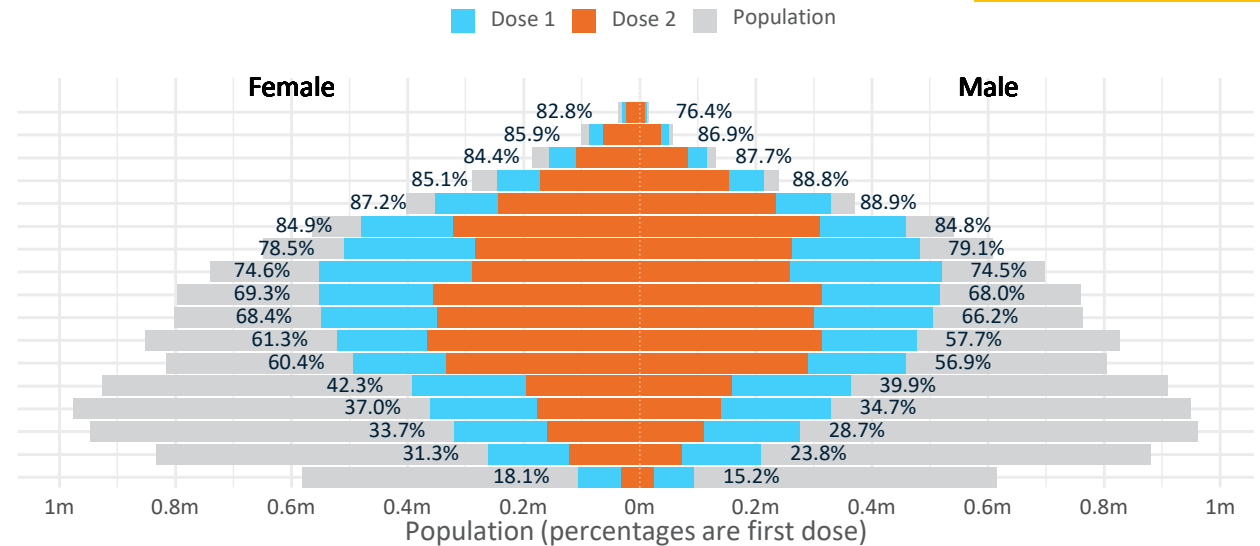
Data as at: 25 Aug 2021

# Doses by age and sex

First and second doses by age and sex, using ABS age brackets

	AUS	16+	50+	70+
Dose 1	55.24% (11,391,093 doses / 20,619,959 people)	76.78% (6,717,613 doses / 8,749,703 people)	86.21% (2,530,086 doses / 2,934,706 people)	
Dose 2	32.30% (6,661,200 doses / 20,619,959 people)	47.62% (4,166,643 doses / 8,749,703 people)	59.87% (1,757,037 doses / 2,934,706 people)	

Age	Dose 1	Dose 2
95+	42,904 (81.1%)	32,534 (61.5%)
90-94	136,782 (86.3%)	99,401 (62.7%)
85-89	271,507 (85.9%)	190,655 (60.3%)
80-84	459,030 (86.9%)	323,676 (61.3%)
75-79	681,429 (88.1%)	478,290 (61.8%)
70-74	938,434 (84.9%)	632,481 (57.2%)
65-69	992,336 (78.9%)	545,268 (43.3%)
60-64	1,072,213 (74.6%)	548,394 (38.2%)
55-59	1,068,763 (68.7%)	668,415 (43.0%)
50-54	1,054,215 (67.4%)	647,529 (41.4%)
45-49	998,852 (59.6%)	678,838 (40.5%)
40-44	952,259 (58.8%)	622,170 (38.4%)
35-39	756,564 (41.2%)	353,960 (19.3%)
30-34	694,227 (36.1%)	317,403 (16.5%)
25-29	599,527 (31.4%)	271,648 (14.2%)
20-24	473,169 (27.6%)	194,949 (11.4%)
16-19	198,882 (16.6%)	55,589 (4.6%)



DOH (Australian Immunisation Register), ABS (Population)

	AUS	ACT	NSW	NT	QLD	SA	TAS	VIC	WA
16 and over - dose 1	11,391,093	213,188	4,122,930	101,300	1,984,180	731,467	252,640	2,878,414	1,009,204
16 and over - dose 2	6,661,200	133,495	2,218,458	67,389	1,212,977	454,238	171,577	1,738,327	615,694
16 and over - population	20,619,959*	344,037	6,565,651	190,571	4,112,707	1,440,400	440,172	5,407,574	2,114,978
16 and over % with dose 1	55.24%	61.97%	62.80%	53.16%	48.25%	50.78%	57.40%	53.23%	47.72%
16 and over % with dose 2	32.30%	38.80%	33.79%	35.36%	29.49%	31.54%	38.98%	32.15%	29.11%
50 and over - dose 1	6,717,613	116,185	2,250,256	42,228	1,270,755	489,355	170,293	1,710,939	626,211
50 and over - dose 2	4,166,643	74,887	1,386,786	28,254	796,351	290,297	114,515	1,053,864	398,628
50 and over - population	8,749,703	127,802	2,807,793	62,280	1,758,855	674,384	220,036	2,211,211	885,370
50 and over % with dose 1	76.78%	90.91%	80.14%	67.80%	72.25%	72.56%	77.39%	77.38%	70.73%
50 and over % with dose 2	47.62%	58.60%	49.39%	45.37%	45.28%	43.05%	52.04%	47.66%	45.02%
70 and over - dose 1	2,530,086	39,401	849,915	9,393	489,546	200,277	67,562	626,386	229,148
70 and over - dose 2	1,757,037	29,258	584,603	6,905	346,284	131,702	49,831	433,793	162,145
70 and over - population	2,934,706	39,946	962,606	12,343	577,767	240,514	77,155	743,519	280,281
70 and over % with dose 1	86.21%	98.64%	88.29%	76.10%	84.73%	83.27%	87.57%	84.25%	81.76%
70 and over % with dose 2	59.87%	73.24%	60.73%	55.94%	59.93%	54.76%	64.59%	58.34%	57.85%

\*National population will not equal sum of listed jurisdictions due to a small number of people counted in national population residing in some 'other' territories

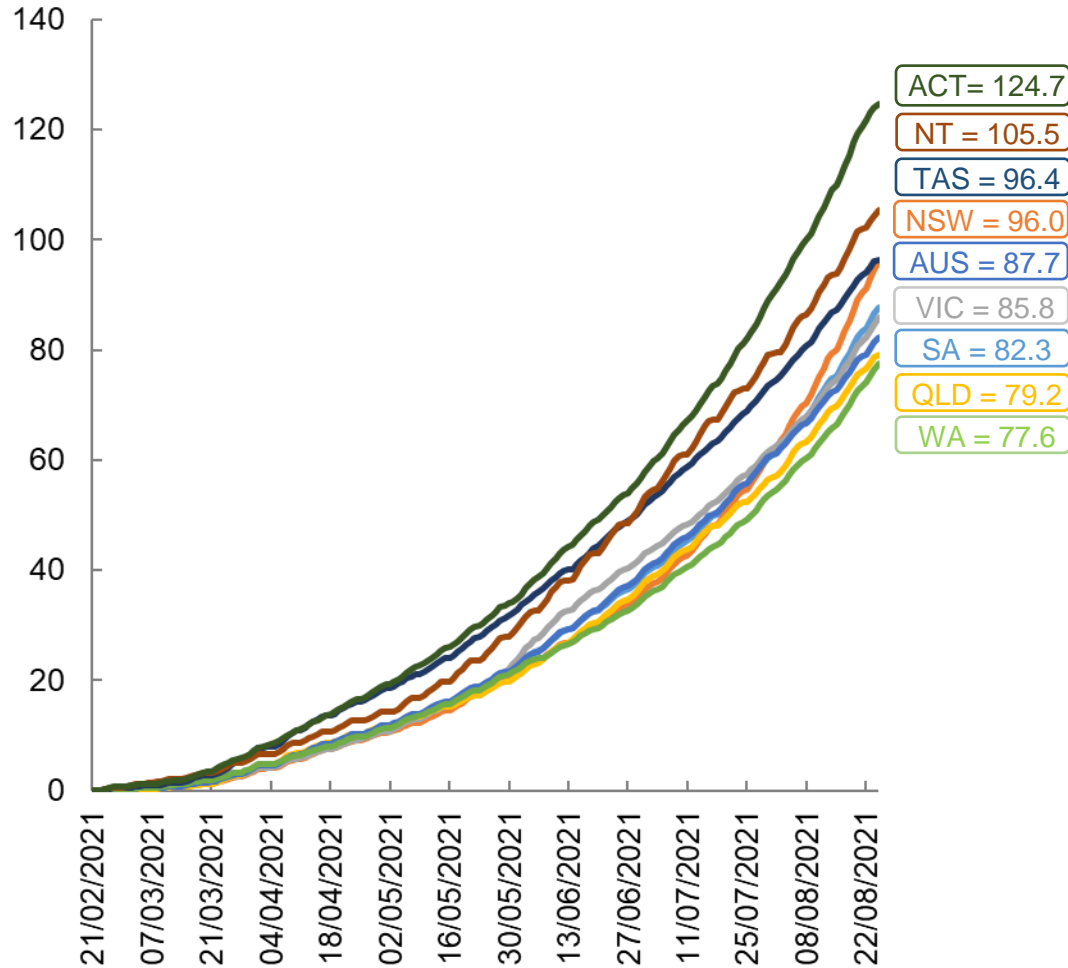
Doses sourced from Australian Immunisation Register, population from ABS ERP June 2020

# Vaccinations by location

Data as at:  
25 Aug 2021

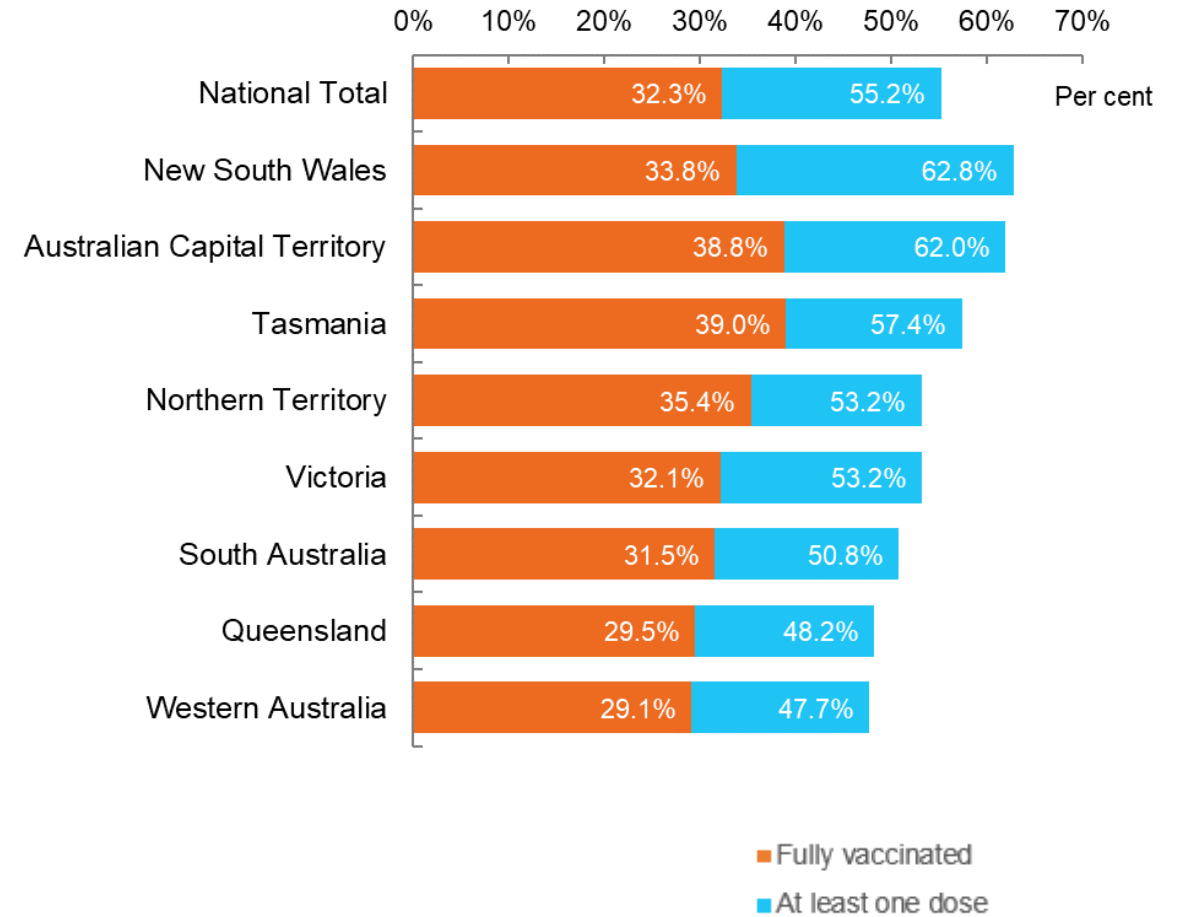
Australia's COVID-19  
Vaccine Roadmap

Cumulative total doses administered vs state populations\*



\*Not an indication of percentage vaccinated, numbers will exceed 100 due to multiple doses required per person of the population

First and Second Doses by state of residence





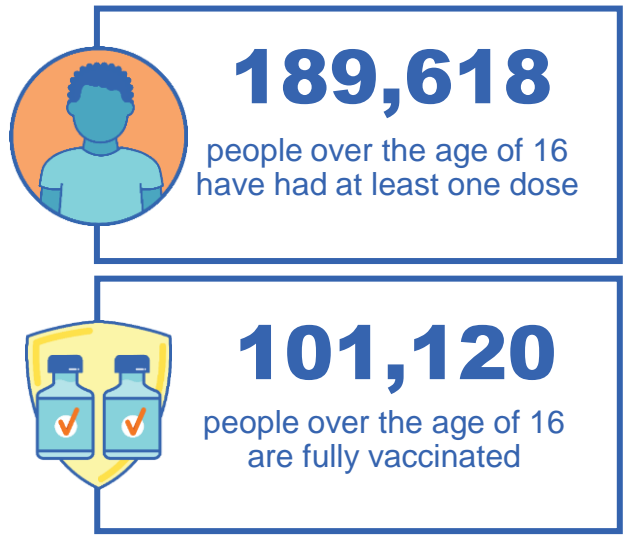
# Aboriginal and Torres Strait Islander peoples

## Number of people vaccinated

Data as at:  
22 Aug 2021  
Updated weekly  
Data reconciliation underway

**159** Aboriginal community controlled health services (ACCHS)

0#	44	24	38	11	3	21	18
<b>ACT</b>	<b>NSW</b>	<b>NT</b>	<b>QLD</b>	<b>SA</b>	<b>TAS</b>	<b>VIC</b>	<b>WA</b>



4,614 people with at least one dose  
2,188 people fully vaccinated

residing in other territories or with missing residential information  
Source: Australian Immunisation Register

\*Identifying as Aboriginal and Torres Strait Islander is optional and the estimated population may be under reported.  
\*\*Includes all Aboriginal and Torres Strait Islander peoples who have received a vaccination, not limited to those administered in an ACCHS setting  
\*\*\*Updated weekly.  
#ACCHS in the ACT are currently operating as a Commonwealth Vaccine Clinics so not included to avoid double counting



Data as at:  
25 Aug 2021

## Commonwealth primary care



### Primary care vaccine administration sites

<b>5,289</b>	<b>137</b>	<b>159</b>	<b>2,593</b>
GPs	CVCs	ACCHS	Pharmacies



**9,817,786** total vaccine doses administered primary care settings as at 25 August  
**+ 183,275** recorded in the last 24 hours

### Primary care vaccinations by provider type

	Doses administered	Daily increase	7 day increase
<b>General Practice*</b> includes other Commonwealth	9,573,316	165,727	921,525
<b>Pharmacy</b>	244,470	17,548	102,612

**NSW**  
**3,738,398**  
(+76,542 daily increase)

**VIC**  
**2,293,699**  
(+45,583 daily increase)

**QLD**  
**1,871,120**  
(+29,699 daily increase)

**WA**  
**823,774**  
(+12,278 daily increase)

**TAS**  
**188,330**  
(+2,575 daily increase)

**SA**  
**621,130**  
(+11,045 daily increase)

**ACT**  
**165,377**  
(+3,369 daily increase)

**NT**  
**66,287**  
(+1,090 daily increase)

**49,671** doses administered to persons residing in other territories or with missing residential information

\*General practice includes Commonwealth Vaccination Clinics, Aboriginal Community Health Centres, Royal Flying Doctor Service and other Commonwealth vaccination facilities

Source: Australian Immunisation Register

Data as at:  
25 Aug 2021

# Commonwealth aged care and disability doses administered



People vaccinated in aged care  
and residential disability facilities

**433,669**

People with a first dose

**300,367**

People fully vaccinated

Residential aged care  
facilities

**2,569**

Sites visited for first doses

**2,568**

Sites visited for second doses

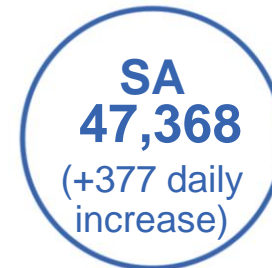
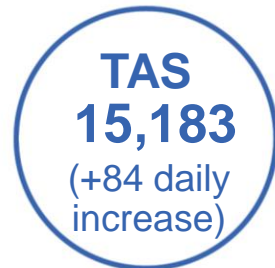


**735,099**

(+9,985 last 24 hours)

Total vaccine doses administered in aged care  
and disability facilities as at 25 August

Number of doses administered as part of the Commonwealth aged and disability care rollout



**20,156**

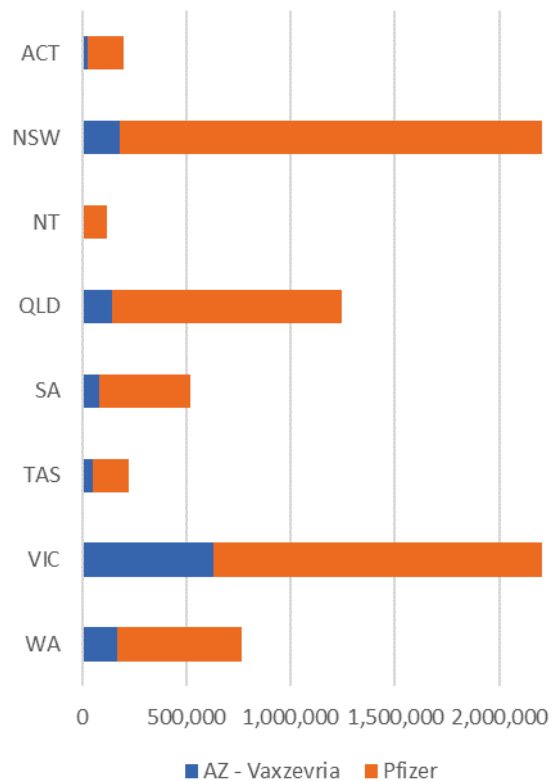
doses administered to persons  
residing in other territories or with  
missing residential information

\*Sourced from the Australian Immunisation Register. Includes all persons vaccinated at participating residential aged care, disability and related industry settings.  
\*\*State level breakdown indicates the residential location and may not align to the state in which the vaccination occurred.

Data as at:  
25 Aug 2021

# Jurisdiction administered

Total vaccine doses administered in State and Territory clinics as at 25 August



**7,530,322** total vaccine doses administered in State and Territory clinics as at 25 August  
 + **142,160** recorded in the last 24 hours  
 + **805,797** recorded in the last 7 days

**NSW**  
**2,244,343**  
 (+60,168 daily increase)

**VIC**  
**2,214,371**  
 (+32,081 daily increase)

**QLD**  
**1,244,215**  
 (+21,196 daily increase)

**WA**  
**764,565**  
 (+14,365 daily increase)

**TAS**  
**224,521**  
 (+2,935 daily increase)

**SA**  
**519,100**  
 (+7,004 daily increase)

**ACT**  
**198,832**  
 (+2,819 daily increase)

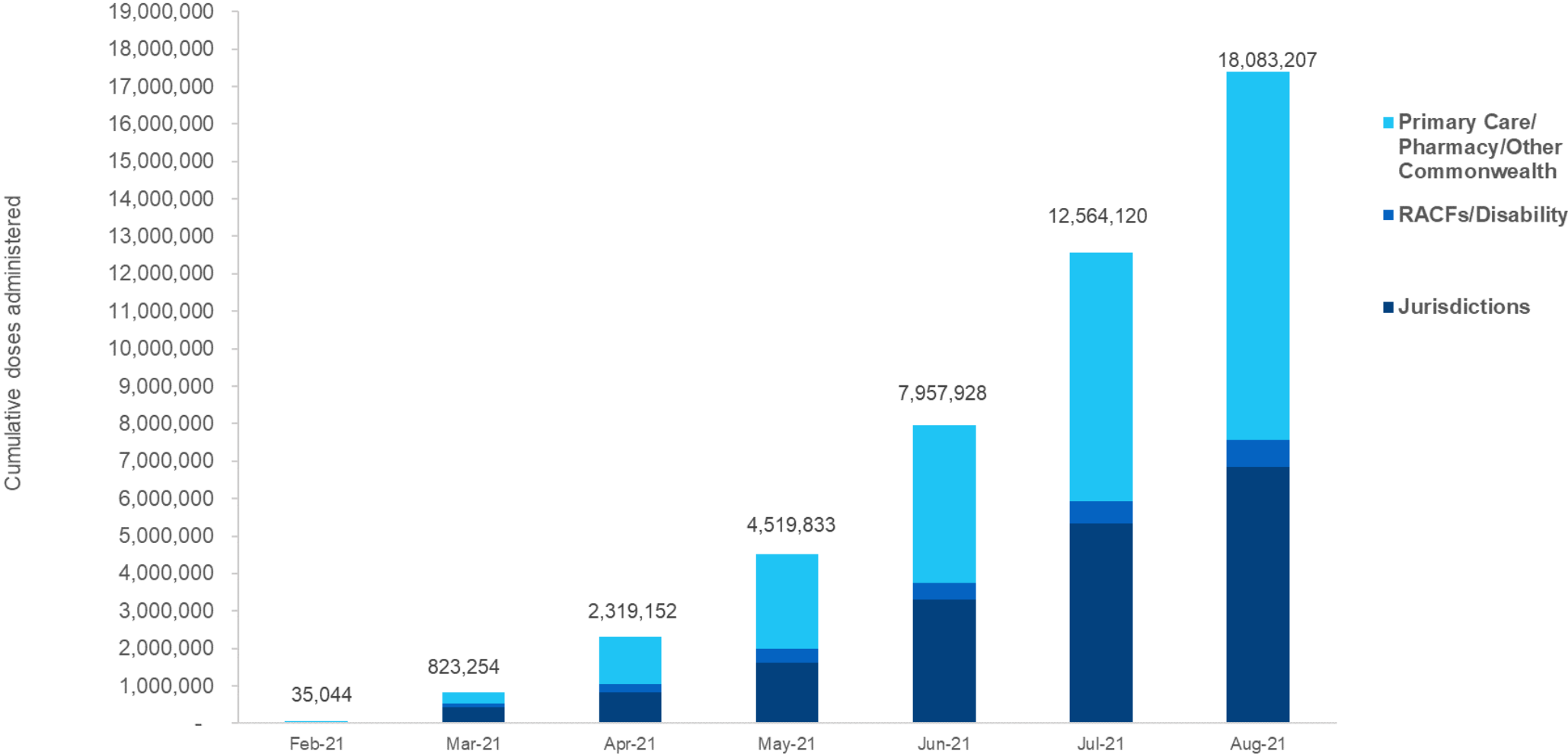
**NT**  
**120,375**  
 (+1,592 daily increase)

\*Sourced from the Australian Immunisation Register and self-reported data. Numbers are calculated as difference in daily cumulative reported numbers to allow for historical corrections in all self-reported data sources.

Source: Australian Immunisation Register

# Cumulative doses administered by channel

Data as at:  
25 Aug 2021



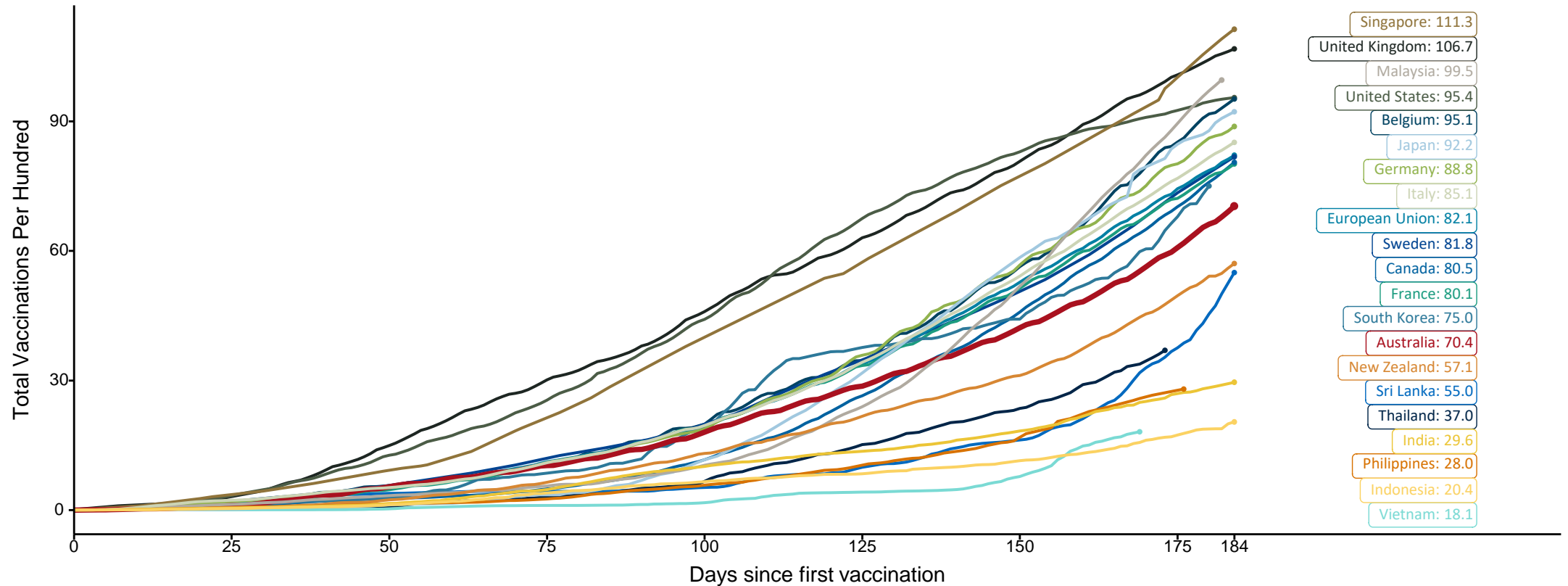
Source: Australian Immunisation Register

# Doses at equivalent stages of rollout (Day 184)

Data as at:  
25 Aug 2021

The x-axis is truncated at the length of Australia's vaccination program. Countries with intermittent reporting have had their doses per 100 imputed to Australia's current stage of rollout. Israel excluded as it is beyond scale of the graph

Cumulative doses administered (25 Aug): **18,083,207**

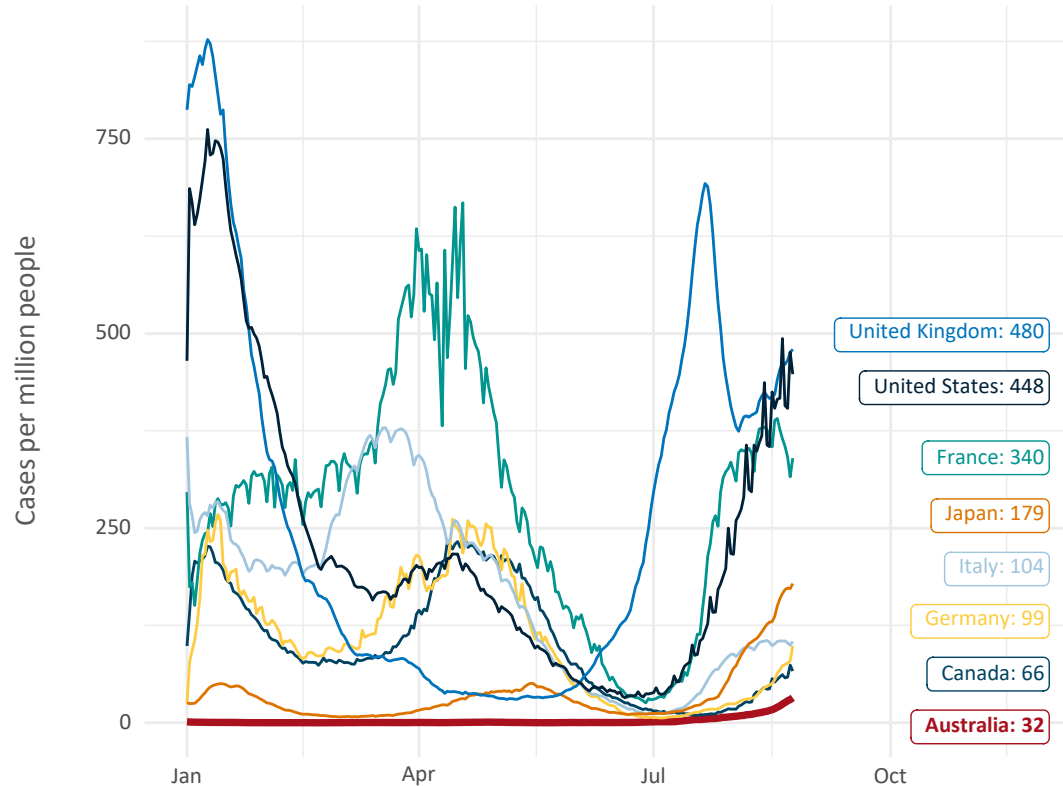


Source: Department of Health (Australia), Our World in Data (international)  
Latest data: 25 August

Data as at:  
25 Aug 2021

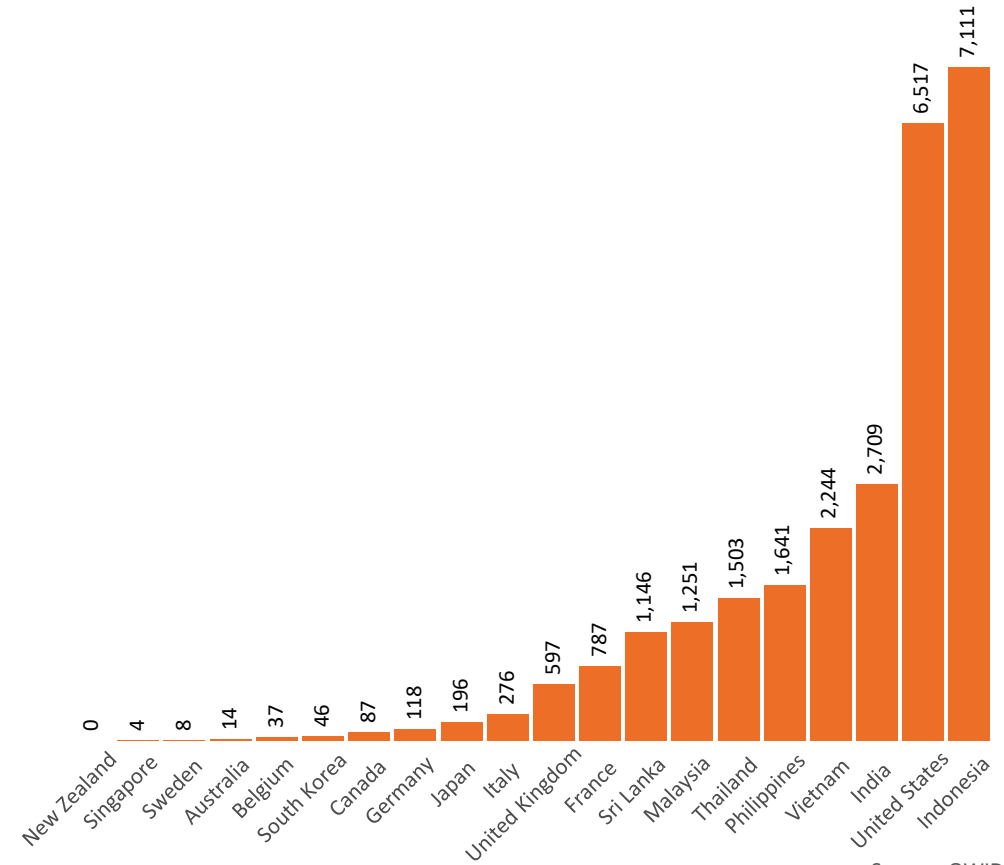
# International data – COVID-19

New daily cases per million in 2021, Australia and G7 countries  
Smoothed - 7 day average



Source: OWID  
Data downloaded: 26 Aug 2021 11:37  
Latest data: 24 Aug 2021

COVID-19 deaths in past 7 days - Australia and select countries




Source: OWID  
Data downloaded: 26 Aug 2021 11:37  
Latest data: 24 Aug 2021



Data as at midnight:  
25 Aug 2021

# Pandemic Response Payments



**1.74 million**  
People have received at least one COVID Disaster Payment (including ISP200)

**\$4.17 billion**  
Paid Out as at 25 Aug 2021

**2.83 million**  
Claims granted across three different payments



**93%**  
of Claims Received Digitally



**COVID Disaster Payment:** 2.82 million claims received - 1.62 million individuals paid a total of \$4.05 billion.

**\$200 Income Support Payment:** 149,000 claims received - 120,000 individuals paid a total of \$63.00 million.

**Pandemic Leave Disaster Payment:** 45,000 claims received - 39,000 individuals paid a total of \$61.05 million.



**THREE PAYMENTS AVAILABLE**

**COVID Disaster Payment**  
assisting during a lockdown event in a Commonwealth hotspot.

**Income Support Payment \$200**  
for income support recipients who lost at least 8 hours of work.

**Pandemic Leave Disaster Payment**  
for those who have to self-isolate, quarantine or care.

For more information visit:  
[servicesaustralia.gov.au](https://servicesaustralia.gov.au)

## COVID-19 DISASTER PAYMENTS

