



**Australian Government**  
**Operation COVID Shield**

# COVID-19 Vaccine Roll-out

25 August 2021

Data as at:  
24 Aug 2021

## Total vaccine doses



**17,747,787** total vaccine doses administered nationally as at 24 August  
**+ 307,191** recorded in the last 24 hours



**11,210,096**

people have had at least one dose

**54.4%**

of people over the age of 16 have had at least one dose



**6,508,204**

people are fully vaccinated

**31.6%**

of people over the age of 16 are fully vaccinated

**NSW**  
**6,160,858**  
(+130,784 daily increase)

**VIC**  
**4,562,243**  
(+74,099 daily increase)

**QLD**  
**3,203,908**  
(+47,283 daily increase)

**WA**  
**1,613,472**  
(+27,706 daily increase)

**TAS**  
**419,038**  
(+4,975 daily increase)

**SA**  
**1,167,534**  
(+16,718 daily increase)

**ACT**  
**422,541**  
(+3,241 daily increase)

**NT**  
**198,193**  
(+2,385 daily increase)

\*Administration state breakdown indicates state in which a vaccine was administered  
\*\*Overall dose count includes instances of more than two doses per person in a small number of cases.

Data as at:  
24 Aug 2021

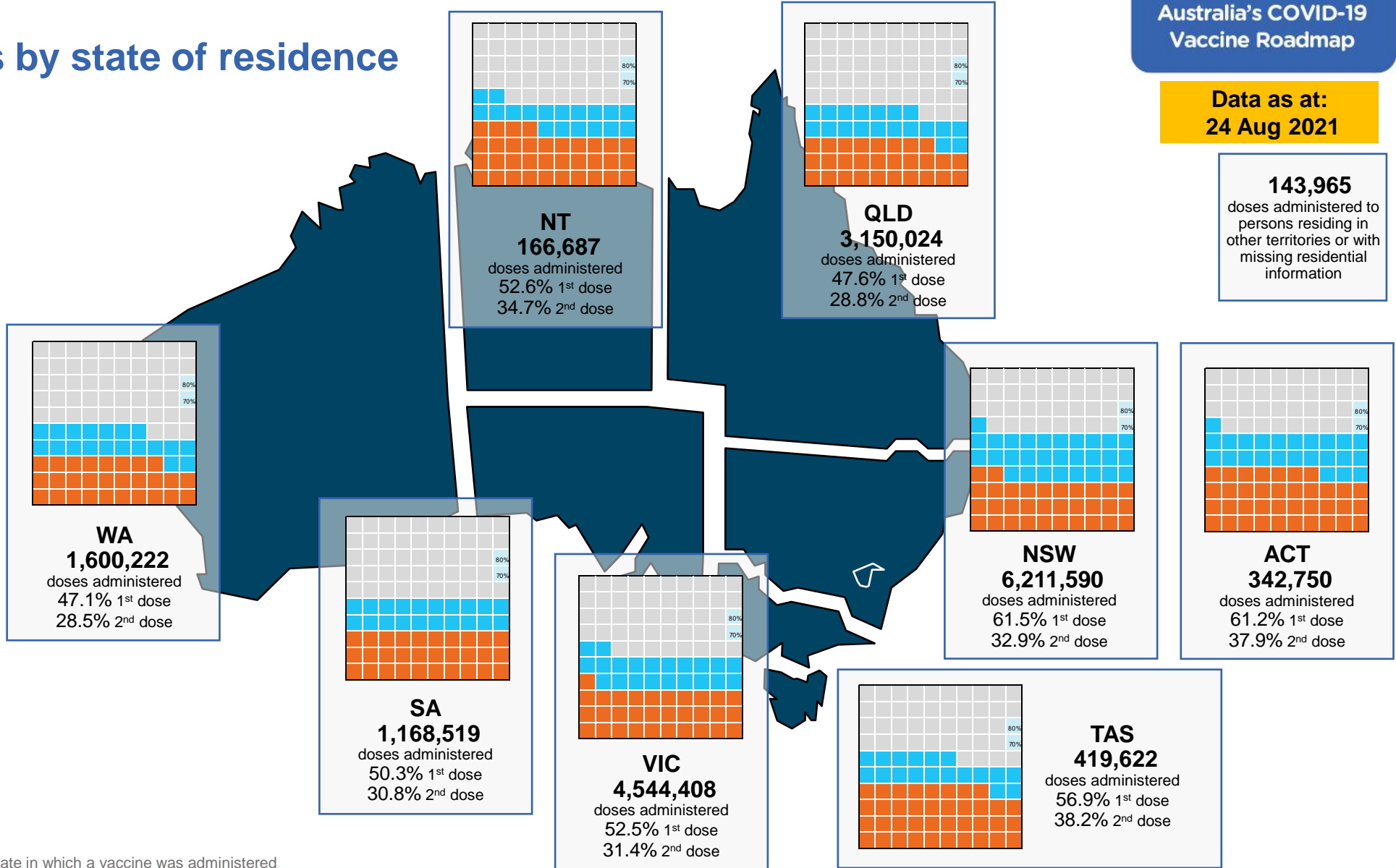
# Vaccinations by state of residence

## First doses

Age Today	4 weeks ago	8 weeks ago
16+	54.4%	39.5%
50+	76.2%	64.4%
70+	85.8%	78.8%

## Fully vaccinated

Age Today	4 weeks ago	8 weeks ago
16+	31.6%	17.6%
50+	46.4%	24.2%
70+	58.8%	39.3%



\*Residential state may differ from the state in which a vaccine was administered

## Commonwealth and Jurisdiction vaccine doses administered

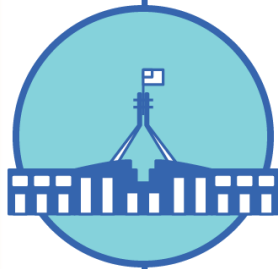
Data as at:  
24 Aug 2021



**17,747,787** total vaccine doses administered nationally as at 24 August  
**+ 307,191** recorded in the last 24 hours



**7,388,162** doses administered by state and territory facilities  
**+ 117,111** recorded in the last 24 hours



**10,359,625** doses administered by commonwealth facilities  
**+ 190,080** recorded in the last 24 hours

**9,634,511** total vaccine doses administered in primary care settings  
**725,114** total vaccine doses administered in aged care and disability settings

NSW	Jurisdictions	Commonwealth
Cumulative	2,184,175	3,976,683
Daily increase	45,140	85,644

VIC	Jurisdictions	Commonwealth
Cumulative	2,182,290	2,379,953
Daily increase	30,549	43,550

QLD	Jurisdictions	Commonwealth
Cumulative	1,223,019	1,980,889
Daily increase	15,540	31,743

WA	Jurisdictions	Commonwealth
Cumulative	750,200	863,272
Daily increase	14,819	12,887

TAS	Jurisdictions	Commonwealth
Cumulative	221,586	197,452
Daily increase	2,496	2,479

SA	Jurisdictions	Commonwealth
Cumulative	512,096	655,438
Daily increase	7,290	9,428

ACT	Jurisdictions	Commonwealth
Cumulative	196,013	226,528
Daily increase	296	2,945

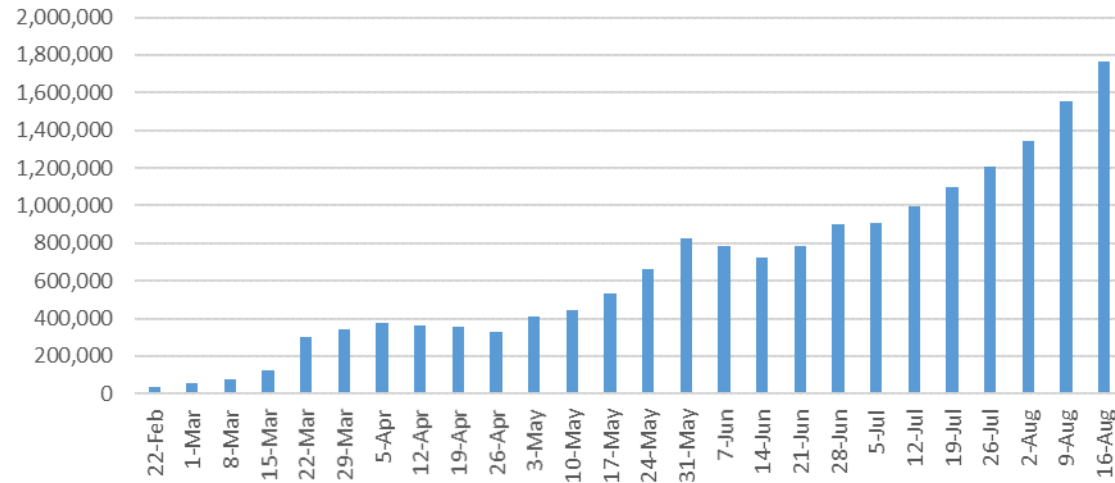
NT	Jurisdictions	Commonwealth
Cumulative	118,783	79,410
Daily increase	981	1,404

# Vaccine milestone charts

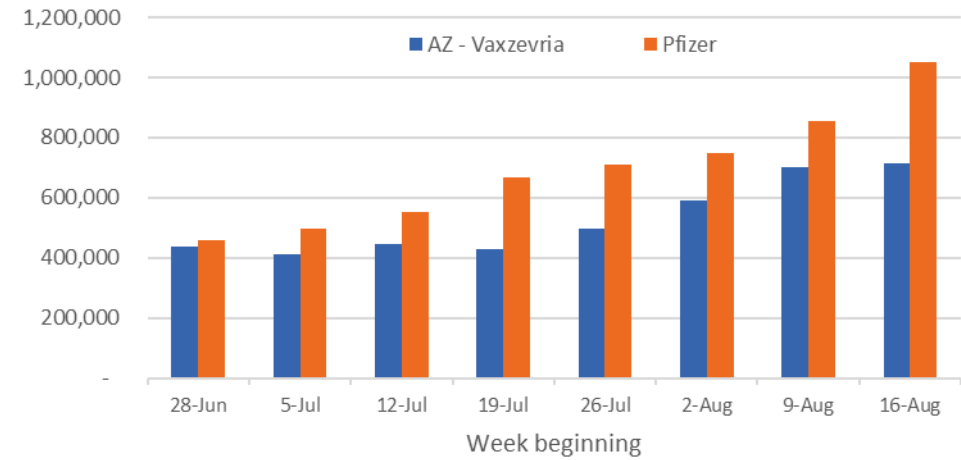
Data as at:  
24 Aug 2021

Australia's COVID-19  
Vaccine Roadmap

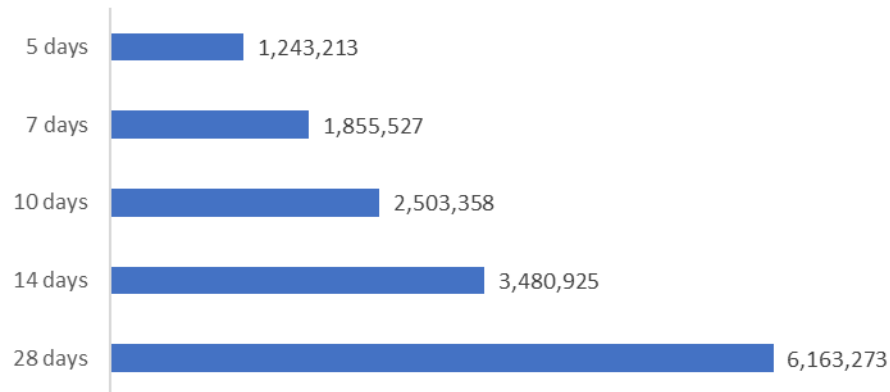
Jabs in arms by week



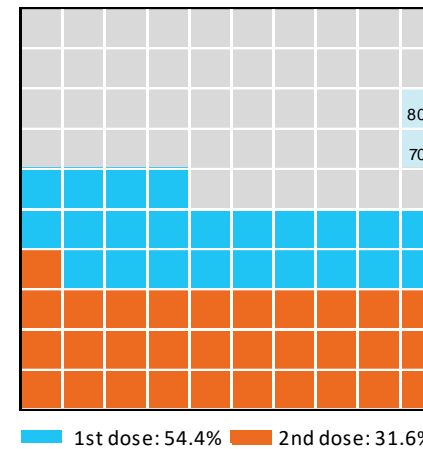
Doses by administration week and vaccine type



Doses reported



Eligible population percentage coverage



\*Each square represents 1% of the national population. Squares are filled as milestones are achieved.

\*Source: Australian Immunisation Register.

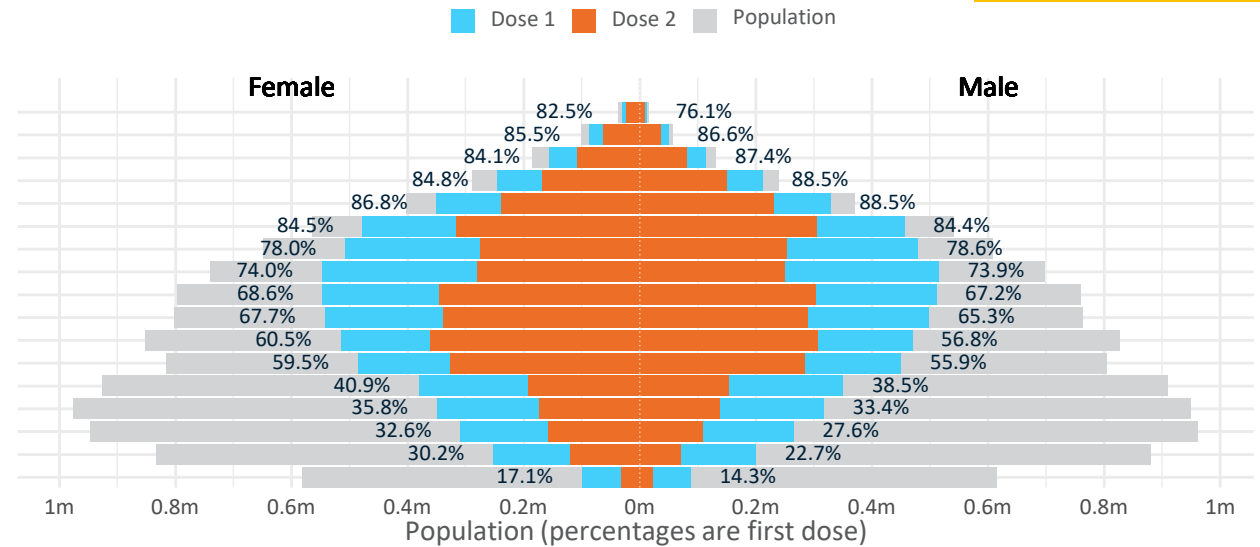
Data as at: 24 Aug 2021

# Doses by age and sex

First and second doses by age and sex, using ABS age brackets

	AUS	16+	50+	70+
Dose 1	54.37% (11,210,096 doses / 20,619,959 people)	66.67% (6,667,575 doses / 8,749,703 people)	85.84% (2,519,150 doses / 2,934,706 people)	
Dose 2	31.56% (6,508,204 doses / 20,619,959 people)	46.40% (4,059,940 doses / 8,749,703 people)	58.85% (1,726,981 doses / 2,934,706 people)	

Age	Dose 1	Dose 2
95+	42,724 (80.7%)	32,246 (60.9%)
90-94	136,262 (86.0%)	98,264 (62.0%)
85-89	270,389 (85.5%)	187,739 (59.4%)
80-84	457,144 (86.5%)	318,355 (60.2%)
75-79	678,530 (87.7%)	469,878 (60.7%)
70-74	934,101 (84.5%)	620,499 (56.2%)
65-69	985,862 (78.4%)	528,005 (42.0%)
60-64	1,063,320 (74.0%)	530,123 (36.9%)
55-59	1,057,657 (68.0%)	647,343 (41.6%)
50-54	1,041,586 (66.6%)	627,488 (40.1%)
45-49	984,795 (58.7%)	667,911 (39.8%)
40-44	936,801 (57.8%)	611,399 (37.7%)
35-39	731,516 (39.9%)	346,335 (18.9%)
30-34	669,769 (34.8%)	310,800 (16.2%)
25-29	578,096 (30.3%)	266,739 (14.0%)
20-24	454,392 (26.5%)	191,064 (11.2%)
16-19	187,152 (15.7%)	54,016 (4.5%)



DOH (Australian Immunisation Register), ABS (Population)

	AUS	ACT	NSW	NT	QLD	SA	TAS	VIC	WA
16 and over - dose 1	11,210,096	210,461	4,036,063	100,188	1,958,762	723,979	250,576	2,838,206	996,247
16 and over - dose 2	6,508,204	130,437	2,163,192	66,152	1,186,472	443,304	167,989	1,700,432	602,085
16 and over - population	20,619,959*	344,037	6,565,651	190,571	4,112,707	1,440,400	440,172	5,407,574	2,114,978
16 and over % with dose 1	54.37%	61.17%	61.47%	52.57%	47.63%	50.26%	56.93%	52.49%	47.10%
16 and over % with dose 2	31.56%	37.91%	32.95%	34.71%	28.85%	30.78%	38.16%	31.45%	28.47%
50 and over - dose 1	6,667,575	115,530	2,228,514	41,957	1,261,849	486,142	169,568	1,700,413	622,567
50 and over - dose 2	4,059,940	72,876	1,352,373	27,689	778,063	281,933	111,709	1,022,418	390,231
50 and over - population	8,749,703	127,802	2,807,793	62,280	1,758,855	674,384	220,036	2,211,211	885,370
50 and over % with dose 1	76.20%	90.40%	79.37%	67.37%	71.74%	72.09%	77.06%	76.90%	70.32%
50 and over % with dose 2	46.40%	57.02%	48.16%	44.46%	44.24%	41.81%	50.77%	46.24%	44.08%
70 and over - dose 1	2,519,150	39,236	845,491	9,356	487,726	199,485	67,326	623,731	228,412
70 and over - dose 2	1,726,981	28,776	574,331	6,813	341,115	129,046	49,125	425,426	159,956
70 and over - population	2,934,706	39,946	962,606	12,343	577,767	240,514	77,155	743,519	280,281
70 and over % with dose 1	85.84%	98.22%	87.83%	75.80%	84.42%	82.94%	87.26%	83.89%	81.49%
70 and over % with dose 2	58.85%	72.04%	59.66%	55.20%	59.04%	53.65%	63.67%	57.22%	57.07%

\*National population will not equal sum of listed jurisdictions due to a small number of people counted in national population residing in some 'other' territories

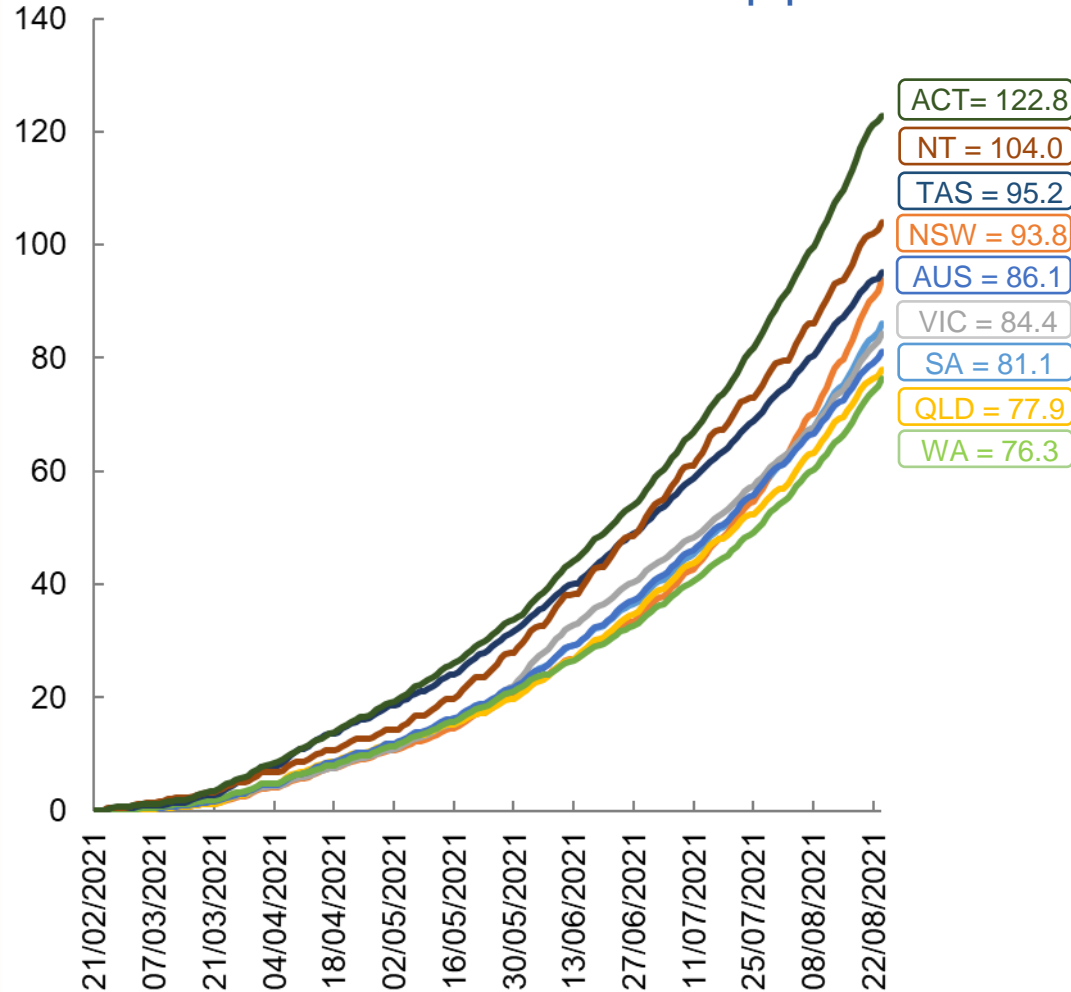
Doses sourced from Australian Immunisation Register, population from ABS ERP June 2020

# Vaccinations by location

Data as at:  
24 Aug 2021

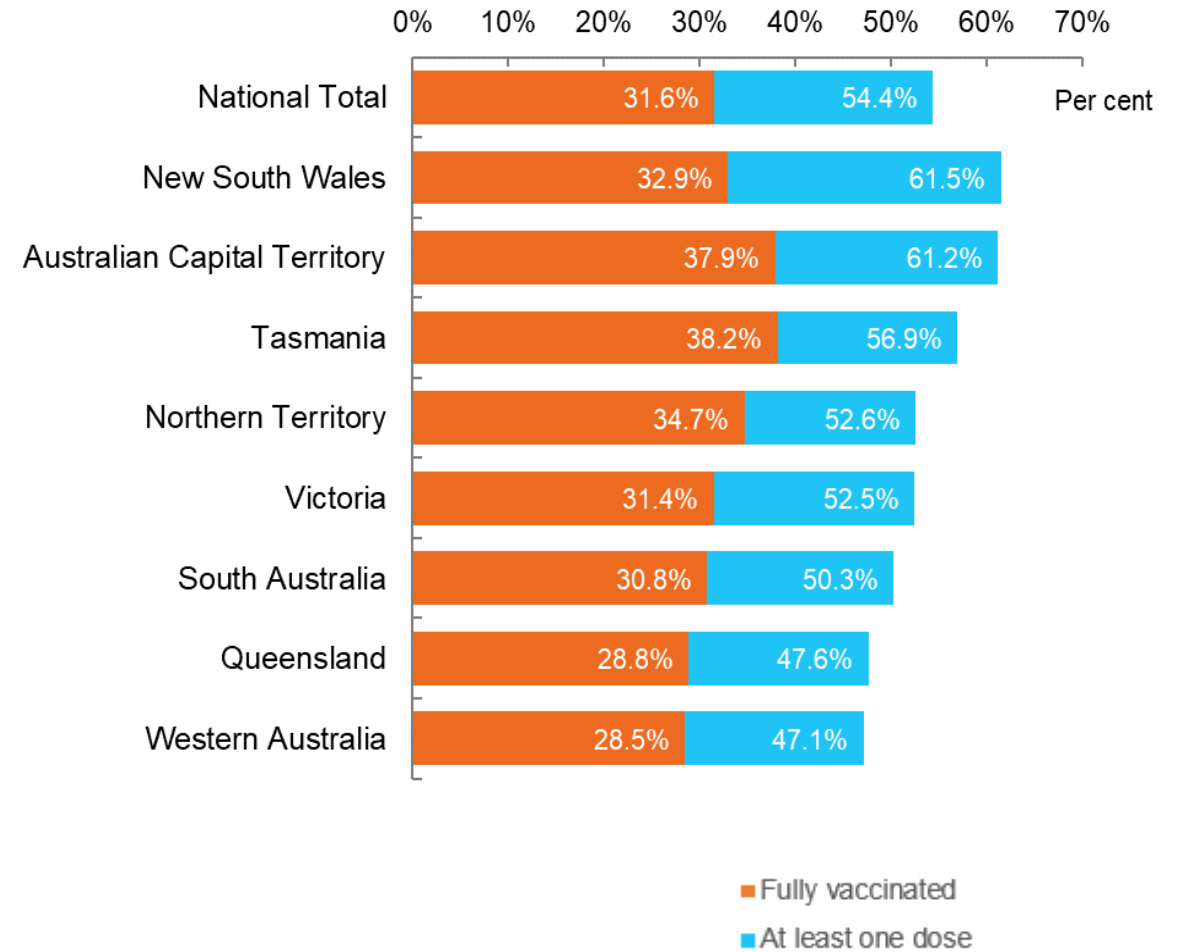
Australia's COVID-19  
Vaccine Roadmap

Cumulative total doses administered vs state populations\*



\*Not an indication of percentage vaccinated, numbers will exceed 100 due to multiple doses required per person of the population

First and Second Doses by state of residence



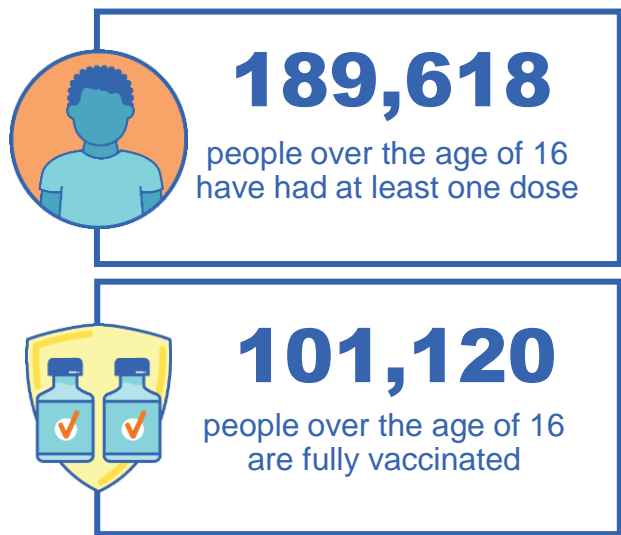
# Aboriginal and Torres Strait Islander peoples

## Number of people vaccinated

Data as at:  
22 Aug 2021  
Updated weekly  
Data reconciliation underway

**159** Aboriginal community controlled health services (ACCHS)

0#	44	24	38	11	3	21	18
<b>ACT</b>	<b>NSW</b>	<b>NT</b>	<b>QLD</b>	<b>SA</b>	<b>TAS</b>	<b>VIC</b>	<b>WA</b>



4,614 people with at least one dose  
2,188 people fully vaccinated

residing in other territories or with missing residential information  
Source: Australian Immunisation Register

\*Identifying as Aboriginal and Torres Strait Islander is optional and the estimated population may be under reported.  
\*\*Includes all Aboriginal and Torres Strait Islander peoples who have received a vaccination, not limited to those administered in an ACCHS setting  
\*\*\*Updated weekly.  
#ACCHS in the ACT are currently operating as a Commonwealth Vaccine Clinics so not included to avoid double counting



Data as at:  
24 Aug 2021

## Commonwealth primary care



### Primary care vaccine administration sites

<b>5,287</b>	<b>137</b>	<b>159</b>	<b>2,595</b>
GPs	CVCs	ACCHS	Pharmacies



**9,634,511** total vaccine doses administered primary care settings as at 24 August  
**+ 179,585** recorded in the last 24 hours

### Primary care vaccinations by provider type

	Doses administered	Daily increase	7 day increase
<b>General Practice*</b> includes other Commonwealth	9,407,589	161,728	915,251
<b>Pharmacy</b>	226,922	17,857	101,891

**NSW**  
**3,661,856**  
(+77,872 daily increase)

**VIC**  
**2,248,116**  
(+42,462 daily increase)

**QLD**  
**1,841,421**  
(+29,899 daily increase)

**WA**  
**811,496**  
(+12,770 daily increase)

**TAS**  
**185,755**  
(+2,435 daily increase)

**SA**  
**610,085**  
(+9,365 daily increase)

**ACT**  
**162,008**  
(+2,679 daily increase)

**NT**  
**65,197**  
(+1,163 daily increase)

**48,577** doses administered to persons residing in other territories or with missing residential information

\*General practice includes Commonwealth Vaccination Clinics, Aboriginal Community Health Centres, Royal Flying Doctor Service and other Commonwealth vaccination facilities

Source: Australian Immunisation Register

Data as at:  
24 Aug 2021

# Commonwealth aged care and disability doses administered



People vaccinated in aged care  
and residential disability facilities

**426,987**

People with a first dose

**297,074**

People fully vaccinated

Residential aged care  
facilities

**2,569**

Sites visited for first doses

**2,568**

Sites visited for second doses

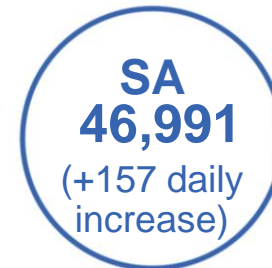


**725,114**

(+10,495 last 24 hours)

Total vaccine doses administered in aged care  
and disability facilities as at 24 August

Number of doses administered as part of the Commonwealth aged and disability care rollout



\*Sourced from the Australian Immunisation Register. Includes all persons vaccinated at participating residential aged care, disability and related industry settings.  
\*\*State level breakdown indicates the residential location and may not align to the state in which the vaccination occurred.

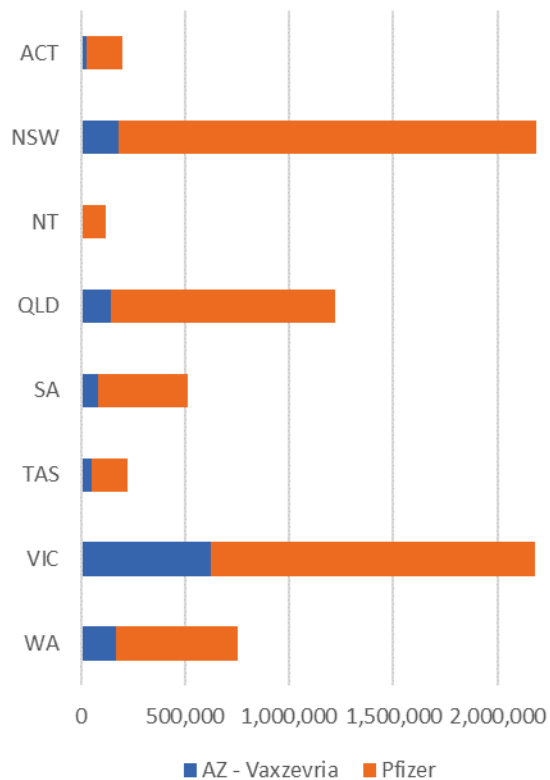
**20,019**

doses administered to persons  
residing in other territories or with  
missing residential information

Data as at:  
24 Aug 2021

# Jurisdiction administered

Total vaccine doses administered in State and Territory clinics as at 24 August



**7,388,162** total vaccine doses administered in State and Territory clinics as at 24 August  
 + **117,111** recorded in the last 24 hours  
 + **782,840** recorded in the last 7 days

**NSW**  
**2,184,175**  
 (+45,140 daily increase)

**VIC**  
**2,182,290**  
 (+30,549 daily increase)

**QLD**  
**1,223,019**  
 (+15,540 daily increase)

**WA**  
**750,200**  
 (+14,819 daily increase)

**TAS**  
**221,586**  
 (+2,496 daily increase)

**SA**  
**512,096**  
 (+7,290 daily increase)

**ACT**  
**196,013**  
 (+296 daily increase)

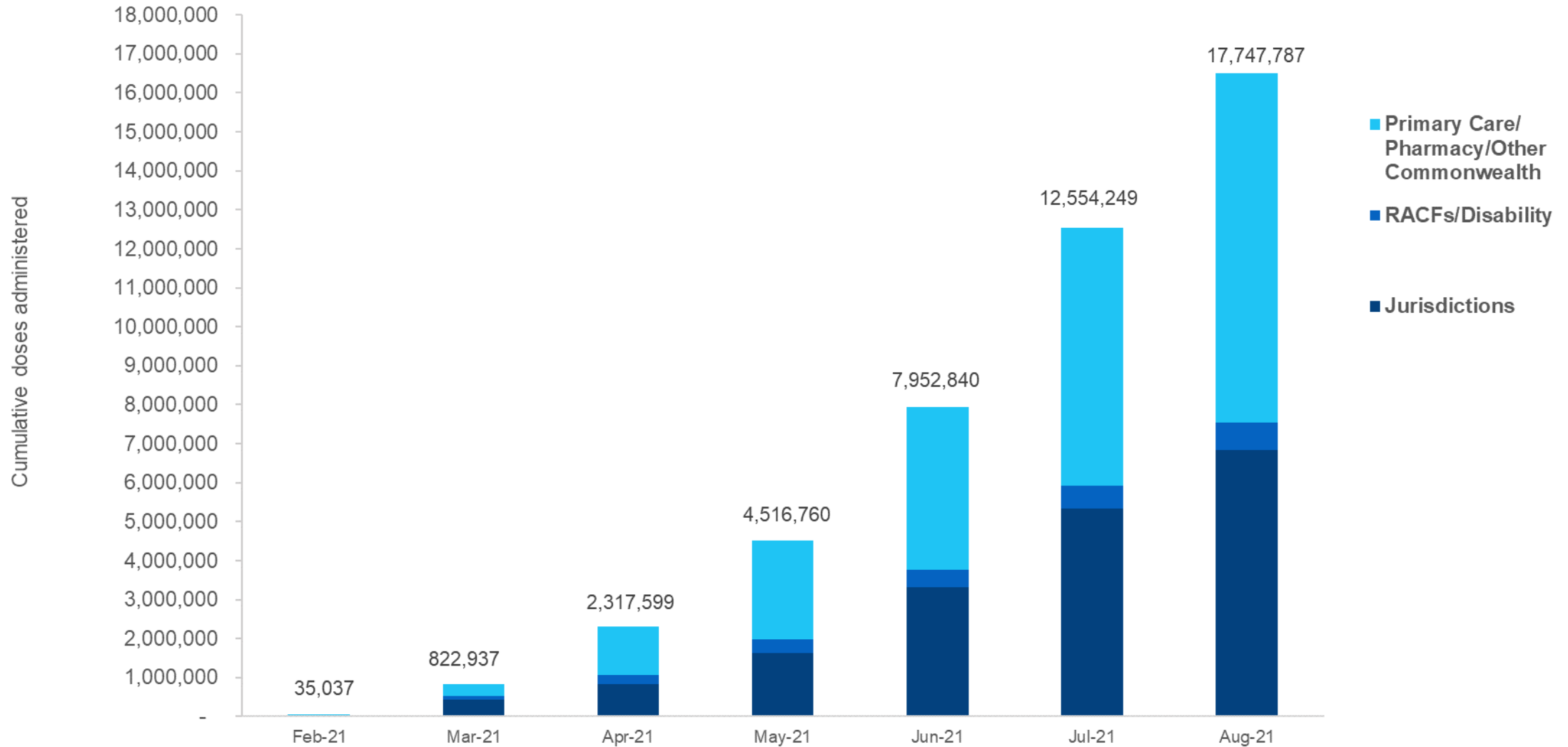
**NT**  
**118,783**  
 (+981 daily increase)

\*Sourced from the Australian Immunisation Register and self-reported data. Numbers are calculated as difference in daily cumulative reported numbers to allow for historical corrections in all self-reported data sources.

Source: Australian Immunisation Register

# Cumulative doses administered by channel

Data as at:  
24 Aug 2021



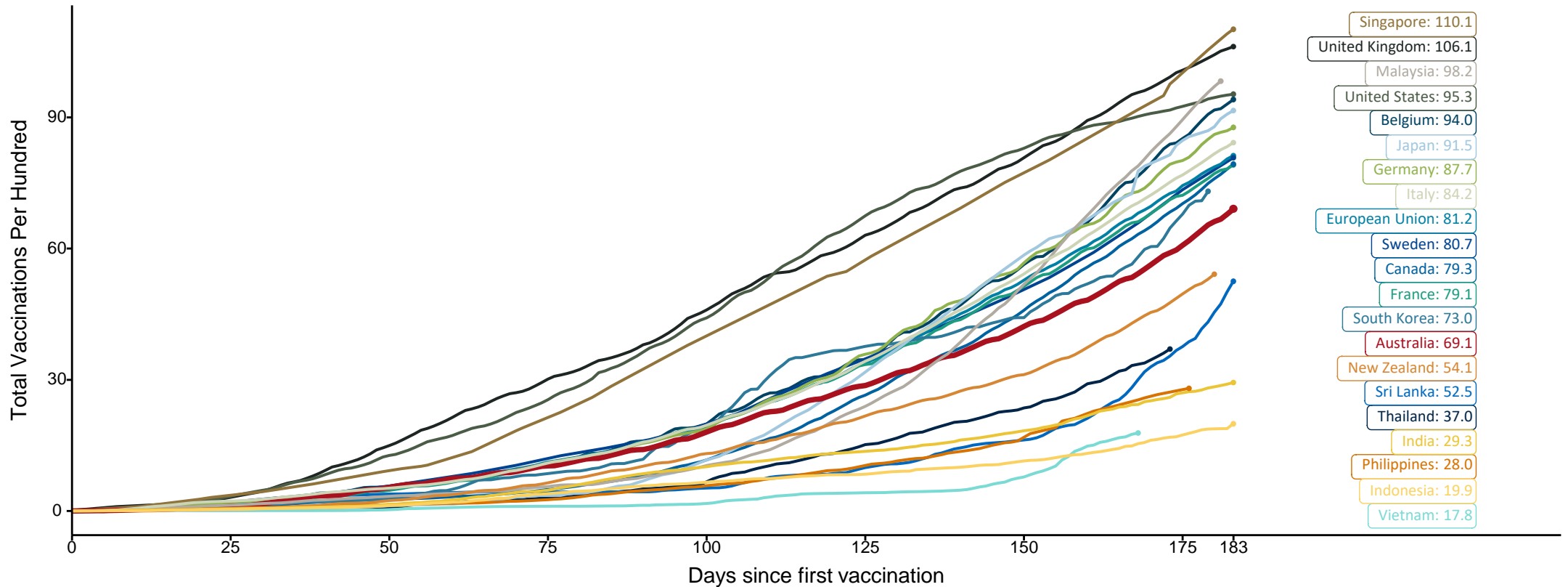
Source: Australian Immunisation Register

# Doses at equivalent stages of rollout (Day 183)

Data as at:  
24 Aug 2021

The x-axis is truncated at the length of Australia's vaccination program. Countries with intermittent reporting have had their doses per 100 imputed to Australia's current stage of rollout. Israel excluded as it is beyond scale of the graph

Cumulative doses administered (24 Aug): **17,747,787**



Source: Department of Health (Australia), Our World in Data (international)  
Latest data: 24 August

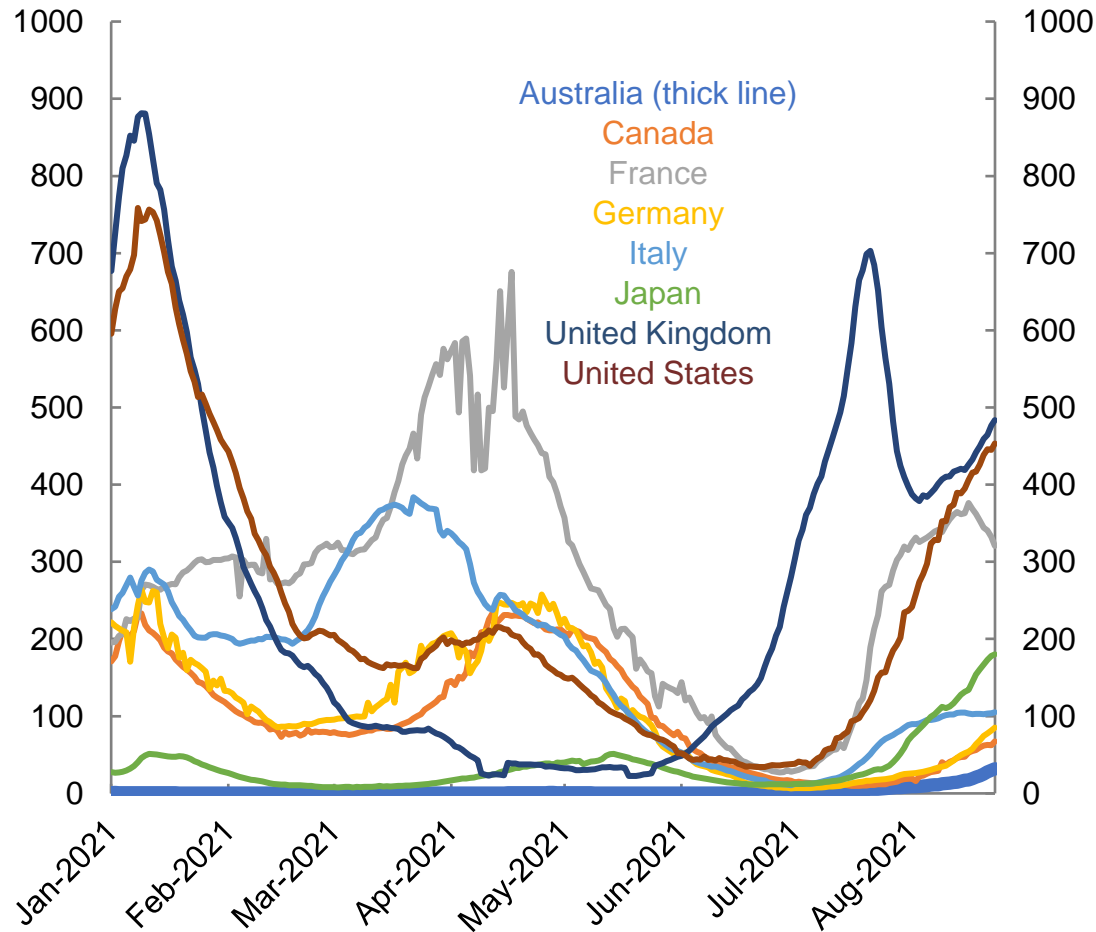
# International data – COVID-19

Data as at:  
24 Aug 2021

Australia's COVID-19  
Vaccine Roadmap

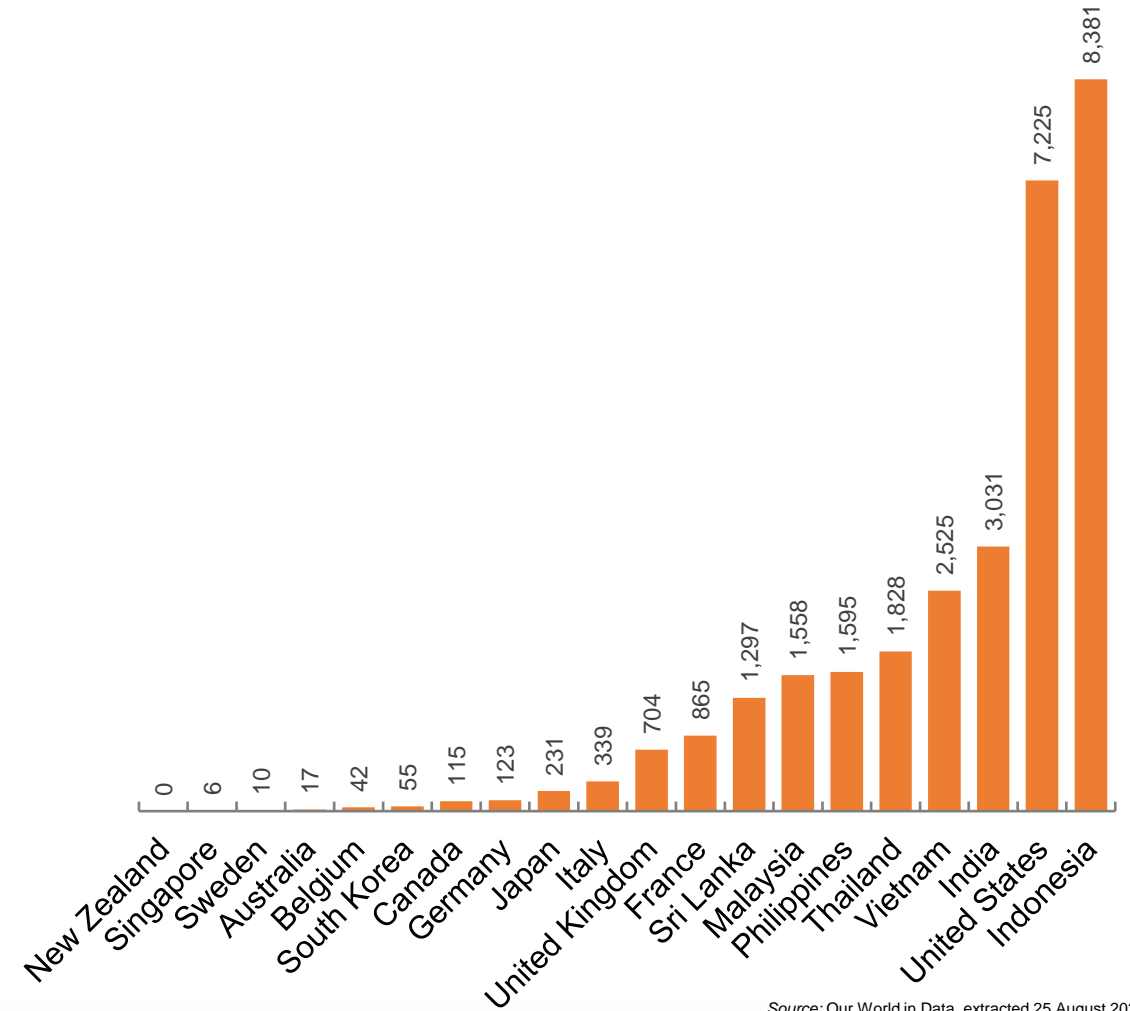
New daily cases per million in 2021, Australia and G7 countries

7 day moving average



Source: Our World in Data, extracted 25 August 2021


COVID-19 deaths in past 7 days - Australia and select countries



Source: Our World in Data, extracted 25 August 2021

Data as at midnight:  
24 Aug 2021

# Pandemic Response Payments



**1.72 million**  
People have received at least one COVID Disaster Payment (including ISP200)

**\$4.13 billion**  
Paid Out as at 24 Aug 2021

**2.80 million**  
Claims granted across three different payments



**93%**  
of Claims Received Digitally



<b>COVID Disaster Payment:</b>	2.79 million claims received - 1.60 million individuals paid a total of \$4.01 billion.
<b>\$200 Income Support Payment:</b>	145,000 claims received - 120,000 individuals paid a total of \$62.14 million.
<b>Pandemic Leave Disaster Payment:</b>	44,000 claims received - 38,000 individuals paid a total of \$59.61 million.



**THREE PAYMENTS AVAILABLE**

**COVID Disaster Payment**  
assisting during a lockdown event in a Commonwealth hotspot.

**Income Support Payment \$200**  
for income support recipients who lost at least 8 hours of work.

**Pandemic Leave Disaster Payment**  
for those who have to self-isolate, quarantine or care.

For more information visit:  
[servicesaustralia.gov.au](https://servicesaustralia.gov.au)

## COVID-19 DISASTER PAYMENTS

