



Australian Government
Operation COVID Shield

COVID-19 Vaccine Roll-out

24 August 2021

Data as at:
23 Aug 2021

Total vaccine doses



17,440,596 total vaccine
doses administered nationally as at 23 August
+ 289,942 recorded in the last 24 hours



11,043,784

people have had at least one
dose

53.6%

of people over the age of 16
have had at least one dose



6,368,421

people are fully vaccinated

30.9%

of people over the age of 16 are
fully vaccinated

NSW
6,030,074
(+124,645 daily
increase)

VIC
4,488,144
(+67,982 daily
increase)

QLD
3,156,625
(+36,014 daily
increase)

WA
1,585,766
(+24,753 daily
increase)

TAS
414,063
(+4,523 daily
increase)

SA
1,150,816
(+15,142 daily
increase)

ACT
419,300
(+15,170 daily
increase)

NT
195,808
(+1,713 daily
increase)

*Administration state breakdown indicates state in which a vaccine was administered

**Overall dose count includes instances of more than two doses per person in a small number of cases.

Source: Australian Immunisation Register

Data as at:
23 Aug 2021

141,277
doses administered to
persons residing in
other territories or with
missing residential
information

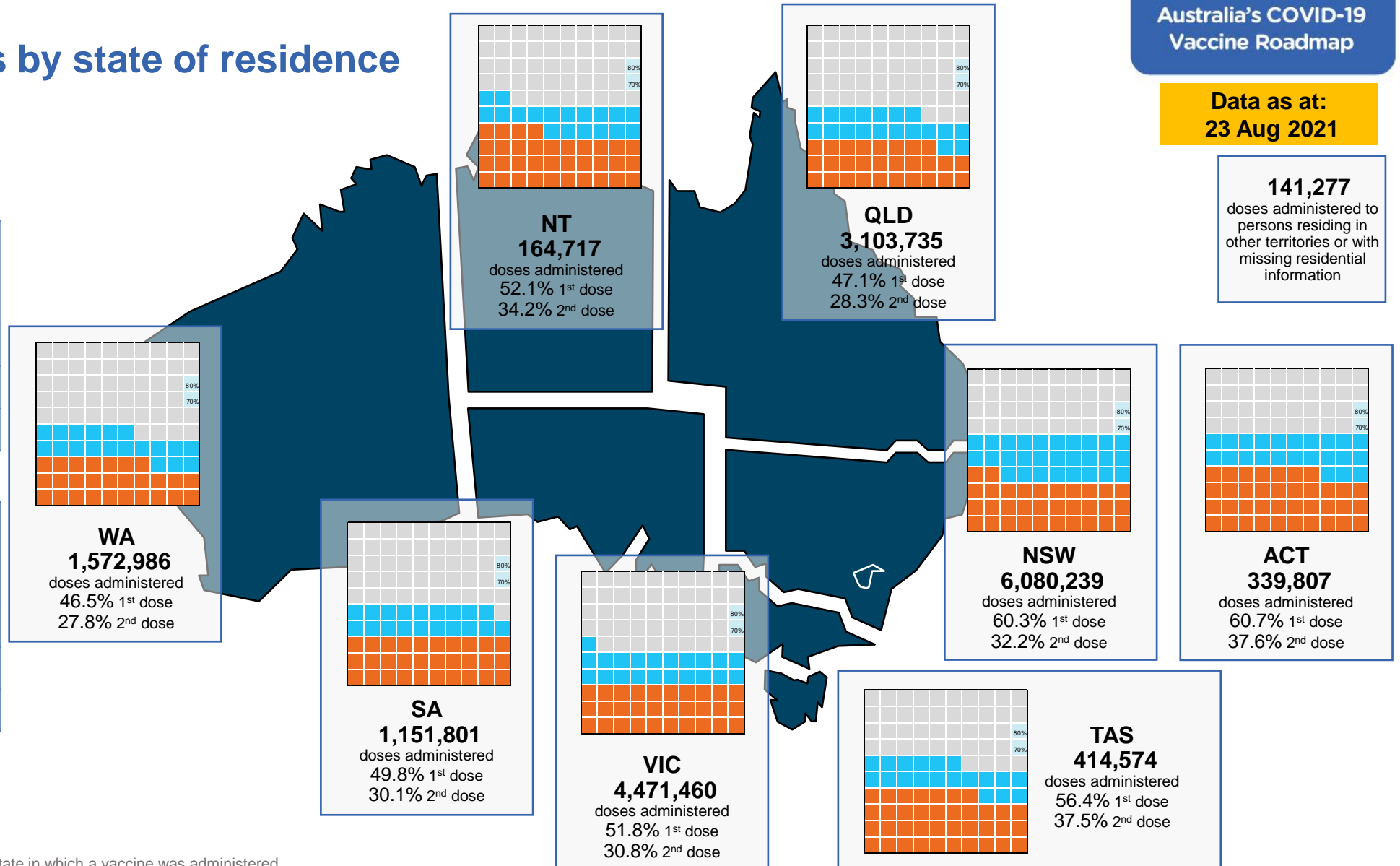
Vaccinations by state of residence

First doses

Age Today	4 weeks ago	8 weeks ago
16+	53.6%	39.0%
50+	75.7%	63.8%
70+	85.5%	78.4%

Fully vaccinated

Age Today	4 weeks ago	8 weeks ago
16+	30.9%	17.1%
50+	45.3%	23.3%
70+	57.9%	38.2%



*Residential state may differ from the state in which a vaccine was administered

Commonwealth and Jurisdiction vaccine doses administered

Data as at:
23 Aug 2021



17,440,596 total vaccine
doses administered nationally as at 23 August

+ 289,942 recorded in the last 24 hours

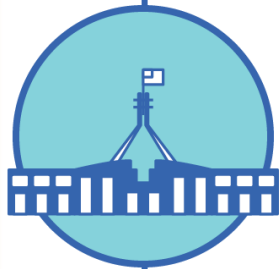


7,271,051

doses administered by state
and territory facilities

+ 111,174

recorded in the last 24 hours



10,169,545

doses administered by
commonwealth facilities

+ 178,768

recorded in the last 24 hours

9,454,926 total vaccine doses
administered in primary care settings

714,619 total vaccine doses
administered in aged care and disability
settings

NSW	Jurisdictions	Commonwealth
Cumulative	2,139,035	3,891,039
Daily increase	45,249	79,396

VIC	Jurisdictions	Commonwealth
Cumulative	2,151,741	2,336,403
Daily increase	27,408	40,574

QLD	Jurisdictions	Commonwealth
Cumulative	1,207,479	1,949,146
Daily increase	8,347	27,667

WA	Jurisdictions	Commonwealth
Cumulative	735,381	850,385
Daily increase	12,722	12,031

TAS	Jurisdictions	Commonwealth
Cumulative	219,090	194,973
Daily increase	1,494	3,029

SA	Jurisdictions	Commonwealth
Cumulative	504,806	646,010
Daily increase	7,382	7,760

ACT	Jurisdictions	Commonwealth
Cumulative	195,717	223,583
Daily increase	7,714	7,456

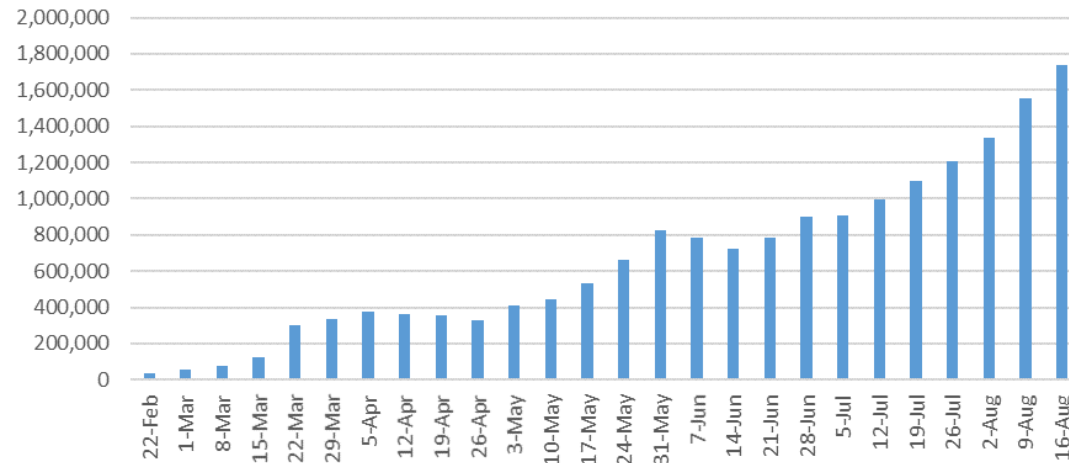
NT	Jurisdictions	Commonwealth
Cumulative	117,802	78,006
Daily increase	858	855

Vaccine milestone charts

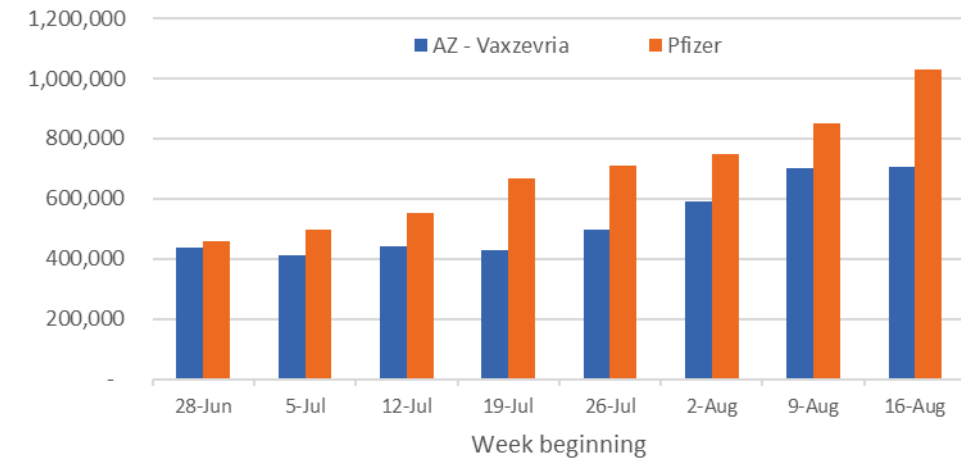
Data as at:
23 Aug 2021

Australia's COVID-19
Vaccine Roadmap

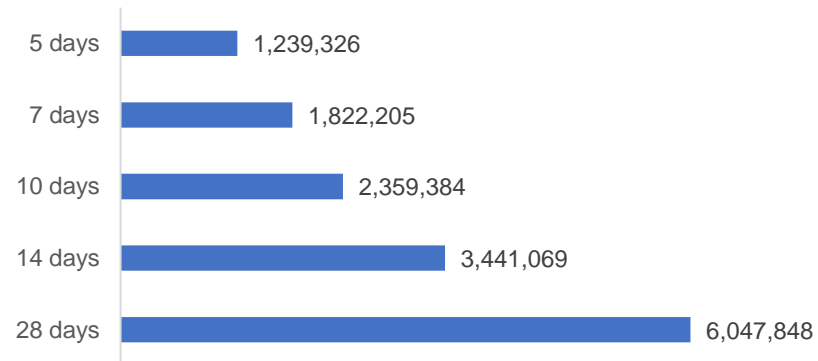
Jabs in arms by week



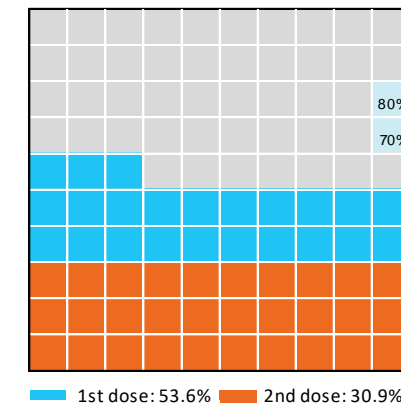
Doses by administration week and vaccine type



Doses reported



Eligible population percentage coverage



*Sourced from the Australian Immunisation Register.

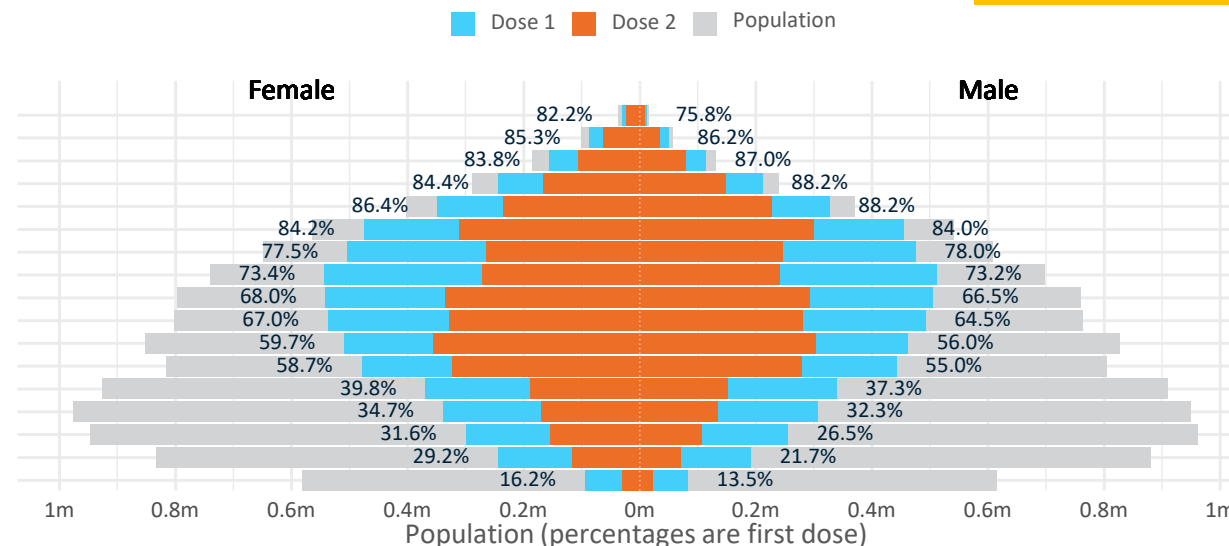
*Each square represents 1% of the national population. Squares are filled as milestones are achieved.

Data as at:
23 Aug 2021

Doses by age and sex

First and second doses by age and sex, using ABS age brackets

Age	Dose 1	Dose 2
95+	42,574 (80.5%)	32,012 (60.5%)
90-94	135,768 (85.7%)	97,228 (61.4%)
85-89	269,314 (85.2%)	185,174 (58.6%)
80-84	455,346 (86.2%)	313,616 (59.3%)
75-79	675,808 (87.3%)	462,455 (59.8%)
70-74	929,901 (84.2%)	609,408 (55.2%)
65-69	979,671 (77.9%)	511,155 (40.6%)
60-64	1,054,587 (73.4%)	512,499 (35.7%)
55-59	1,046,923 (67.3%)	627,768 (40.4%)
50-54	1,029,441 (65.8%)	609,157 (38.9%)
45-49	971,160 (57.9%)	657,877 (39.2%)
40-44	922,105 (56.9%)	601,939 (37.2%)
35-39	709,268 (38.7%)	339,792 (18.5%)
30-34	648,265 (33.7%)	305,346 (15.9%)
25-29	559,037 (29.3%)	262,546 (13.8%)
20-24	437,336 (25.5%)	187,710 (11.0%)
16-19	177,280 (14.8%)	52,739 (4.4%)



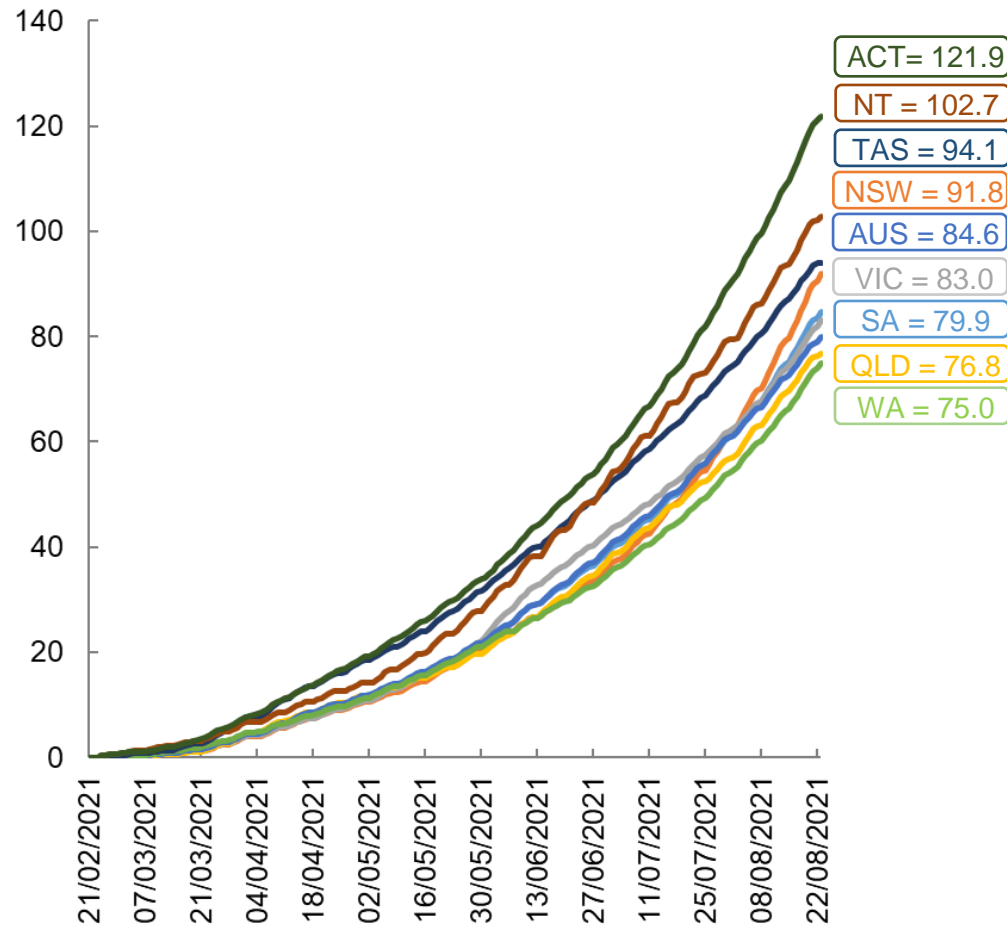
	AUS	ACT	NSW	NT	QLD	SA	TAS	VIC	WA
16 and over - dose 1	11,043,784	208,704	3,956,005	99,239	1,935,465	717,006	248,304	2,801,597	983,788
16 and over - dose 2	6,368,421	129,260	2,112,611	65,136	1,163,606	433,583	165,228	1,664,243	587,351
16 and over - population	20,619,959*	344,037	6,565,651	190,571	4,112,707	1,440,400	440,172	5,407,574	2,114,978
16 and over % with dose 1	53.56%	60.66%	60.25%	52.07%	47.06%	49.78%	56.41%	51.81%	46.52%
16 and over % with dose 2	30.88%	37.57%	32.18%	34.18%	28.29%	30.10%	37.54%	30.78%	27.77%
50 and over - dose 1	6,619,333	115,032	2,208,131	41,736	1,252,988	483,186	168,826	1,689,856	618,884
50 and over - dose 2	3,960,472	71,946	1,320,713	27,135	760,995	274,792	109,464	992,856	380,302
50 and over - population	8,749,703	127,802	2,807,793	62,280	1,758,855	674,384	220,036	2,211,211	885,370
50 and over % with dose 1	75.65%	90.01%	78.64%	67.01%	71.24%	71.65%	76.73%	76.42%	69.90%
50 and over % with dose 2	45.26%	56.29%	47.04%	43.57%	43.27%	40.75%	49.75%	44.90%	42.95%
70 and over - dose 1	2,508,711	39,086	841,527	9,326	485,691	198,712	67,153	621,291	227,619
70 and over - dose 2	1,699,893	28,549	565,341	6,736	336,189	127,089	48,586	417,780	157,335
70 and over - population	2,934,706	39,946	962,606	12,343	577,767	240,514	77,155	743,519	280,281
70 and over % with dose 1	85.48%	97.85%	87.42%	75.56%	84.06%	82.62%	87.04%	83.56%	81.21%
70 and over % with dose 2	57.92%	71.47%	58.73%	54.57%	58.19%	52.84%	62.97%	56.19%	56.13%

*National population will not equal sum of listed jurisdictions due to a small number of people counted in national population residing in some 'other' territories

Doses sourced from Australian Immunisation Register, population from ABS ERP June 2020

Vaccinations by location

Cumulative total doses administered vs state populations*

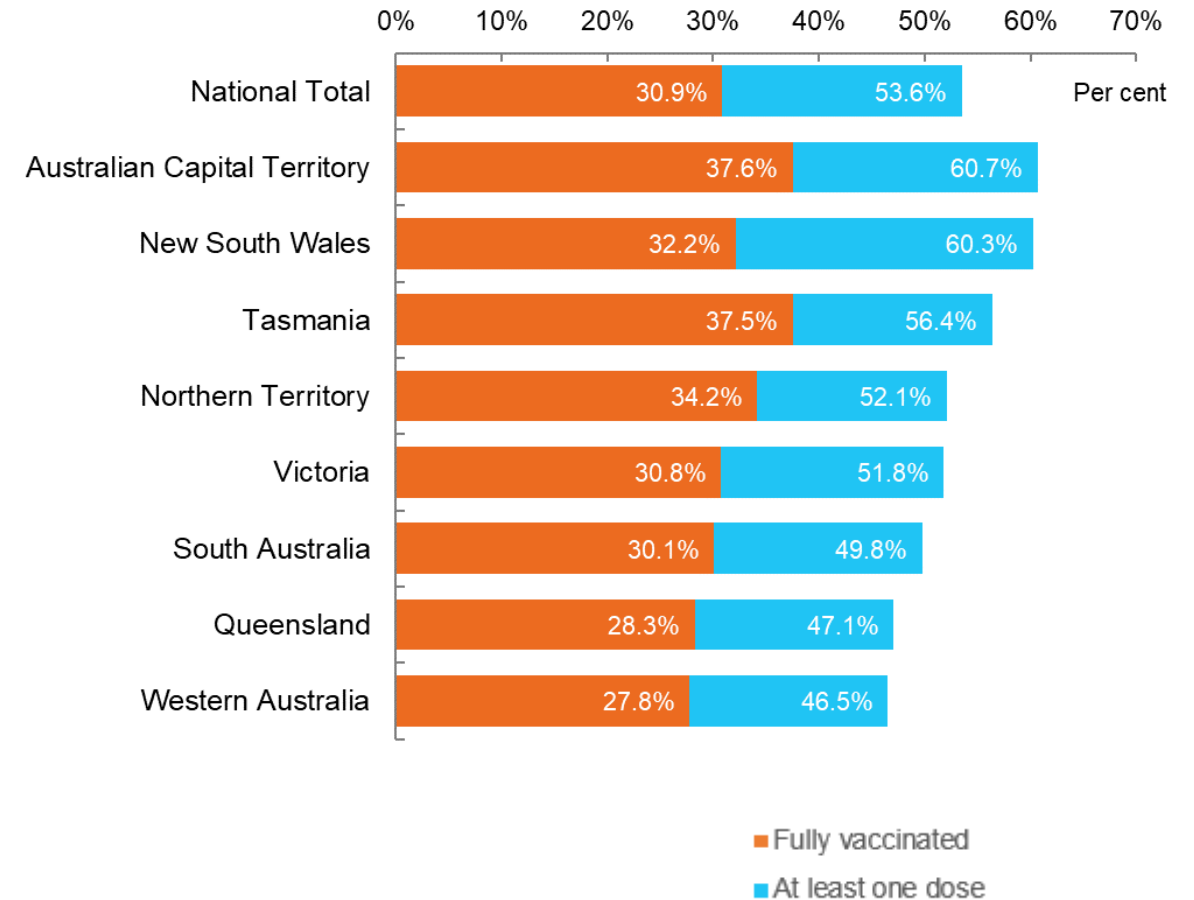


*Not an indication of percentage vaccinated, numbers will exceed 100 due to multiple doses required per person of the population

Data as at:
23 Aug 2021

Australia's COVID-19
Vaccine Roadmap

First and Second Doses by state of residence



Aboriginal and Torres Strait Islander peoples

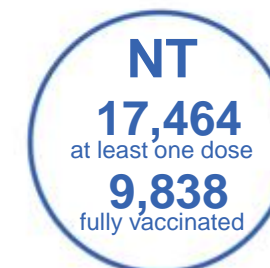
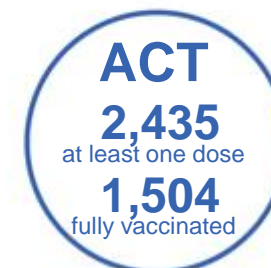
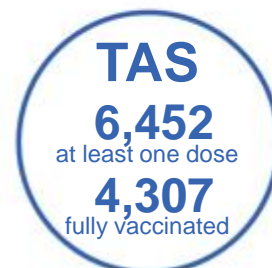
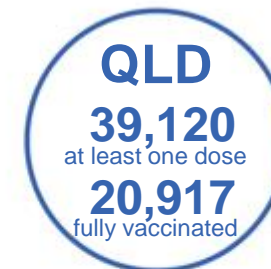
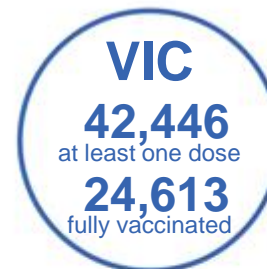
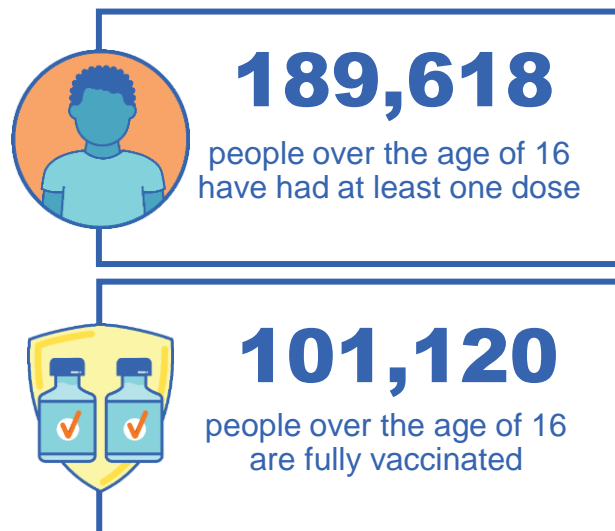
Number of people vaccinated

Data as at:
22 Aug 2021
Updated weekly
Data reconciliation underway

Australia's COVID-19
Vaccine Roadmap

160 Aboriginal community controlled health services (ACCHS)

0#	45	24	38	11	3	21	18
ACT	NSW	NT	QLD	SA	TAS	VIC	WA



4,614 people with at least one dose
2,188 people fully vaccinated

residing in other territories or with missing residential information

Source: Australian Immunisation Register

*Identifying as Aboriginal and Torres Strait Islander is optional and the estimated population may be under reported.

**Includes all Aboriginal and Torres Strait Islander peoples who have received a vaccination, not limited to those administered in an ACCHS setting

***Updated weekly.

#ACCHS in the ACT are currently operating as a Commonwealth Vaccine Clinics so not included to avoid double counting

Data as at:
23 Aug 2021

Commonwealth primary care



Primary care vaccine administration sites

5,287	137	160	2,595
GPs	CVCs	ACCHS	Pharmacies



9,454,926 total vaccine doses administered primary care settings as at 23 August
+ 173,968 recorded in the last 24 hours

Primary care vaccinations by provider type

	Doses administered	Daily increase	7 day increase
General Practice* includes other Commonwealth	9,245,861	155,479	908,405
Pharmacy	209,065	18,489	99,812

NSW
3,583,984
(+77,013 daily increase)

VIC
2,205,654
(+40,548 daily increase)

QLD
1,811,522
(+27,413 daily increase)

WA
798,726
(+12,569 daily increase)

TAS
183,320
(+3,142 daily increase)

SA
600,720
(+8,238 daily increase)

ACT
159,329
(+3,157 daily increase)

NT
64,034
(+965 daily increase)

47,637 doses administered to persons residing in other territories or with missing residential information

*General practice includes Commonwealth Vaccination Clinics, Aboriginal Community Health Centres, Royal Flying Doctor Service and other Commonwealth vaccination facilities

Source: Australian Immunisation Register

Commonwealth aged care and disability doses administered

Data as at:
23 Aug 2021



People vaccinated in aged care
and residential disability facilities

419,999

People with a first dose

293,577

People fully vaccinated

Residential aged care
facilities

2,569

Sites visited for first doses

2,568

Sites visited for second doses



714,619

(+4,800 last 24 hours)

Total vaccine doses administered in aged care
and disability facilities as at 23 August

Number of doses administered as part of the Commonwealth aged and disability care rollout

NSW
314,271

(+3,829 daily
increase)

VIC
144,972

(+524 daily
increase)

QLD
107,931

(+454 daily
increase)

WA
51,782

(+122 daily
increase)

TAS
15,029

(+1 daily
increase)

SA
46,834

(-206 # daily
increase)

ACT
8,827

(+4 daily
increase)

NT
5,085

(-2 # daily
increase)

19,888

doses administered to persons
residing in other territories or with
missing residential information

*Sourced from the Australian Immunisation Register. Includes all persons vaccinated at participating residential aged care, disability and related industry settings.

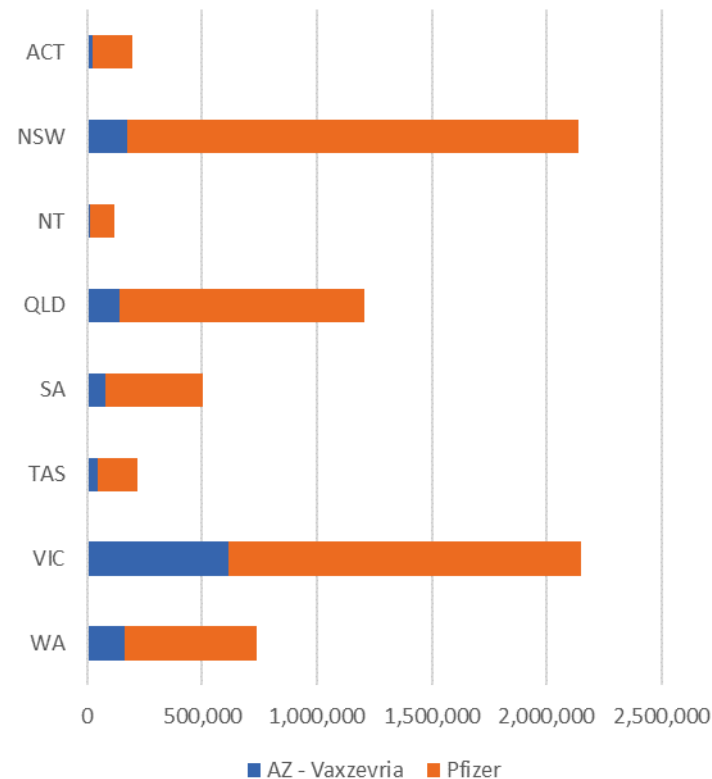
**State level breakdown indicates the residential location and may not align to the state in which the vaccination occurred.

Historical data corrections are reflected in daily increase.

Data as at:
23 Aug 2021

Jurisdiction administered

Total vaccine doses administered in State and Territory clinics as at 23 August



7,271,051 total vaccine doses administered
in State and Territory clinics as at 23 August
+ **111,174** recorded in the last 24 hours
+ **765,252** recorded in the last 7 days

NSW
2,139,035
(+45,249 daily
increase)

VIC
2,151,741
(+27,408 daily
increase)

QLD
1,207,479
(+8,347 daily
increase)

WA
735,381
(+12,722 daily
increase)

TAS
219,090
(+1,494 daily
increase)

SA
504,806
(+7,382 daily
increase)

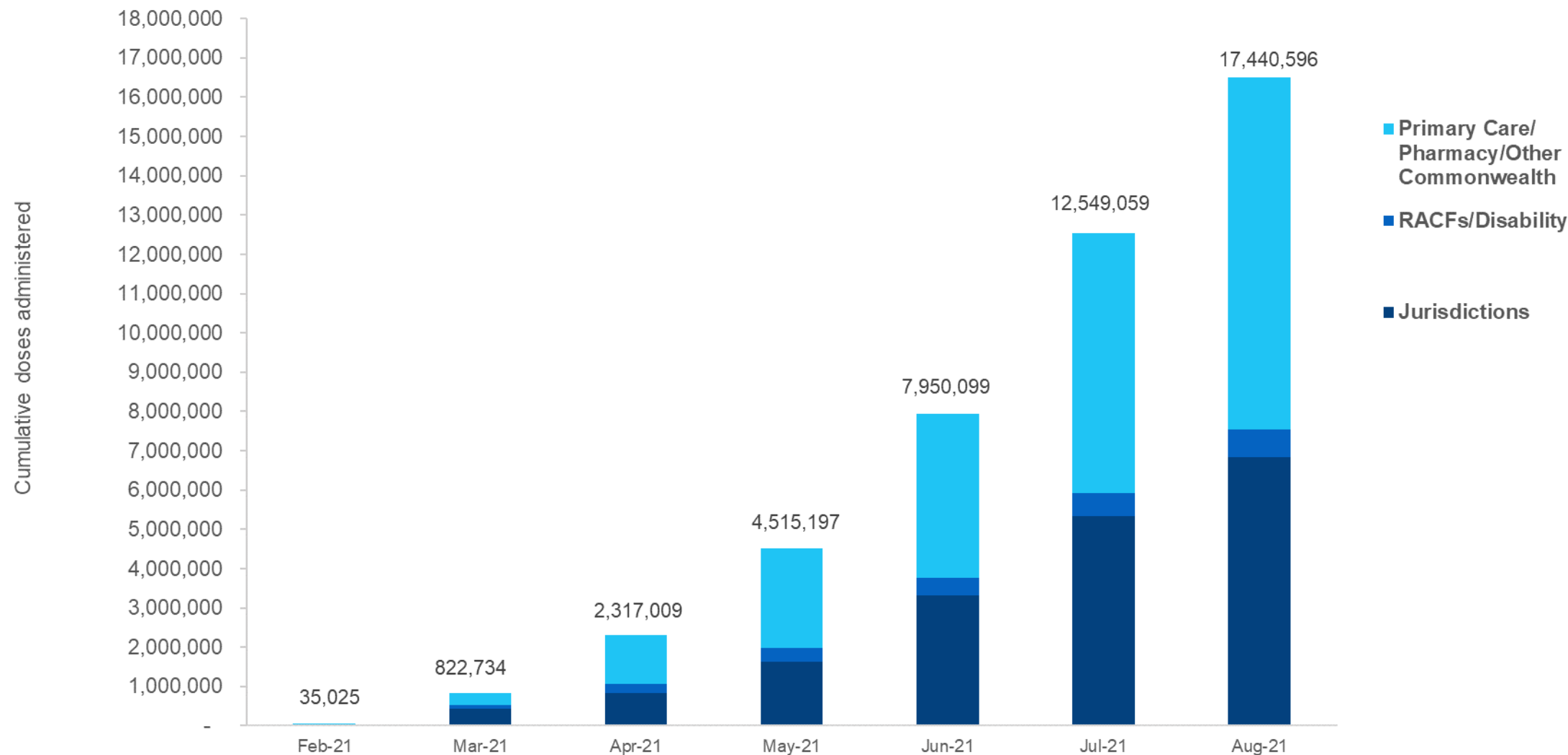
ACT
195,717
(+7,714 daily
increase)

NT
117,802
(+858 daily
increase)

*Sourced from the Australian Immunisation Register and self-reported data. Numbers are calculated as difference in daily cumulative reported numbers to allow for historical corrections in all self-reported data sources.

Cumulative doses administered by channel

Data as at:
23 Aug 2021



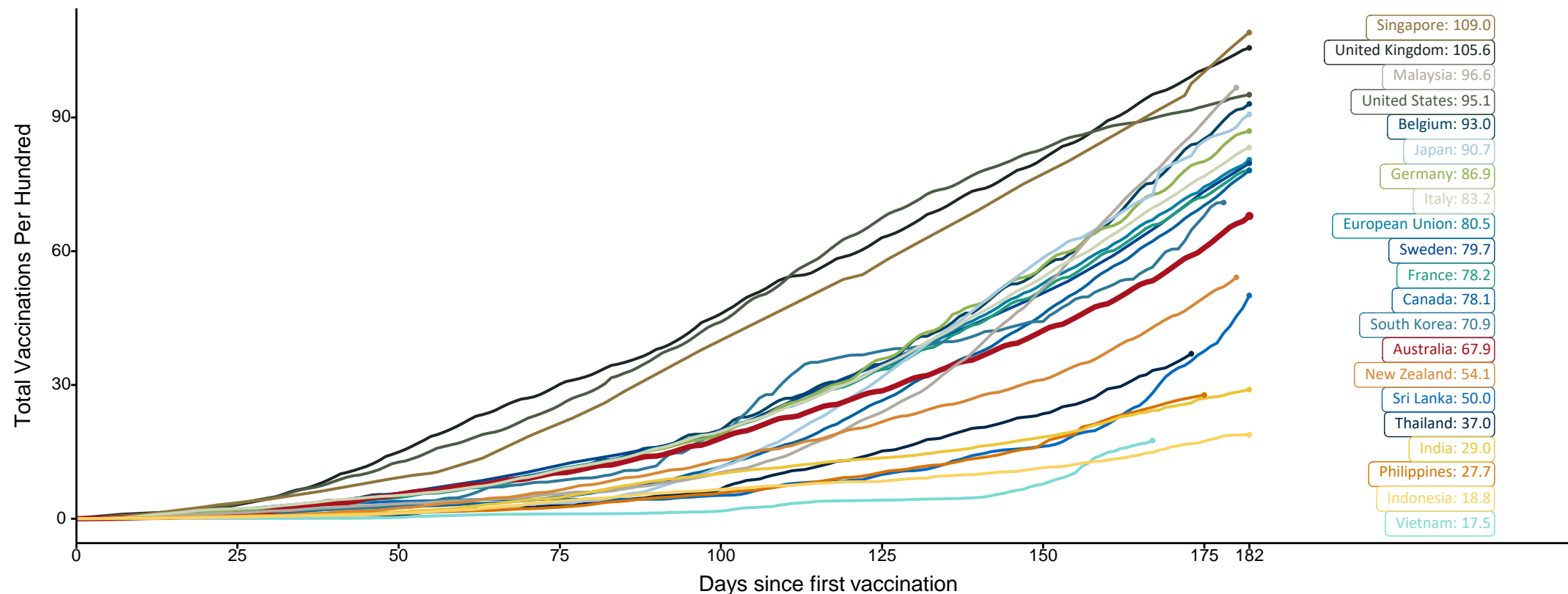
Source: Australian Immunisation Register

Doses at equivalent stages of rollout (Day 182)

Data as at:
23 Aug 2021

The x-axis is truncated at the length of Australia's vaccination program. Countries with intermittent reporting have had their doses per 100 imputed to Australia's current stage of rollout. Israel excluded as it is beyond scale of the graph

Cumulative doses administered (23 Aug): **17,440,596**



Source: Department of Health (Australia), Our World in Data (international)
Latest data: 23 August

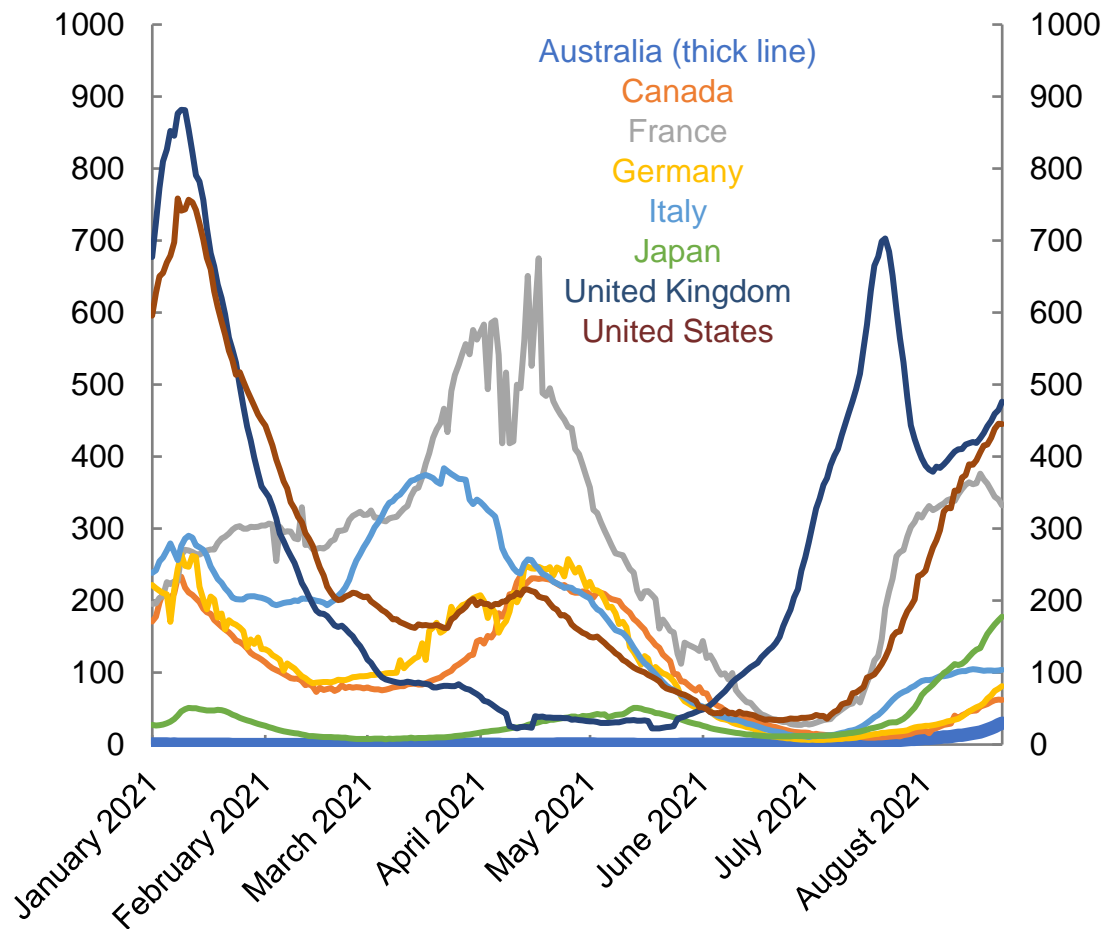
International data – COVID-19

Data as at:
23 Aug 2021

Australia's COVID-19
Vaccine Roadmap

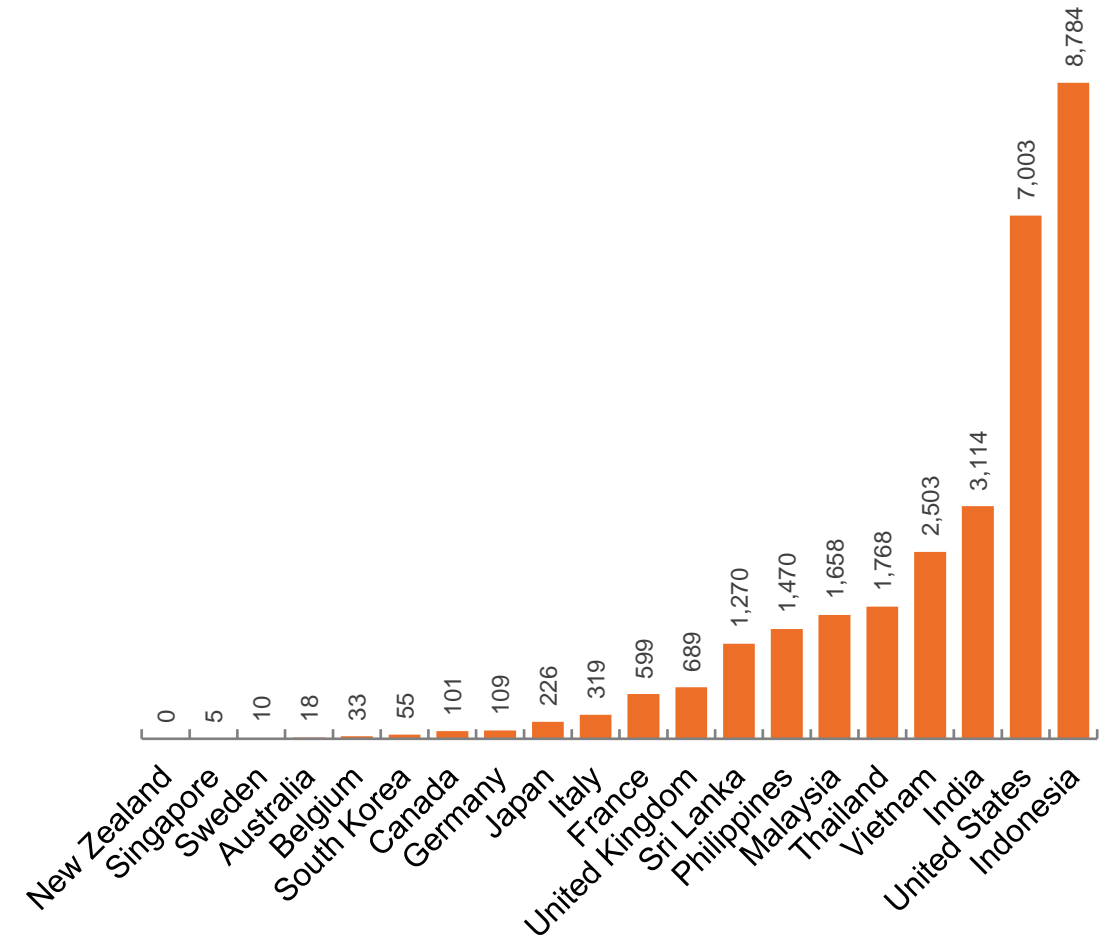
New daily cases per million in 2021, Australia and G7 countries

7 day moving average



Source: Our World in Data, extracted 24 August 2021

COVID-19 deaths in past 7 days - Australia and select countries

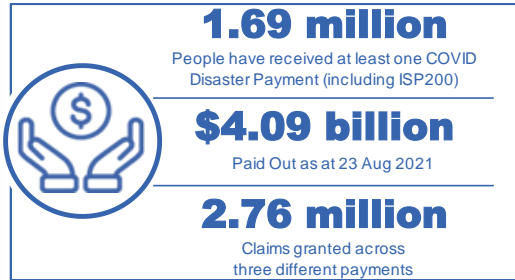


Source: Our World in Data, extracted 24 August 2021

Pandemic Response Payments

Australia's COVID-19
Vaccine Roadmap

Data as at midnight:
23 Aug 2021



COVID Disaster Payment:	2.75 million claims received - 1.57 million individuals paid a total of \$3.97 billion.
\$200 Income Support Payment:	140,000 claims received - 116,000 individuals paid a total of \$60.26 million.
Pandemic Leave Disaster Payment:	44,000 claims received - 37,000 individuals paid a total of \$58.36 million.



COVID Disaster Payment
assisting during a lockdown event in a Commonwealth hotspot.

Income Support Payment \$200
for income support recipients who lost at least 8 hours of work.

Pandemic Leave Disaster Payment
for those who have to self-isolate, quarantine or care.

For more information visit:
servicesaustralia.gov.au

COVID-19 DISASTER PAYMENTS

New South Wales

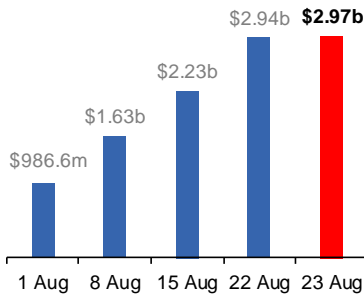
Active lockdown since 24 Jun

906,000 people have received at least one COVID Disaster Payment.

\$2.97b paid out as at 23 Aug 2021.

\$709m paid in initial and reoccurring payments in the week ending 22 Aug 2021.

Cumulative payments made by State since activation on 1 Jul 2021.



Victoria

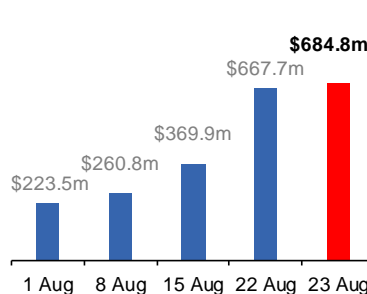
Active lockdown (#6) since 6 Aug

364,000 people have received at least one COVID Disaster Payment.

\$684.8m paid out as at 23 Aug 2021.

\$298m paid in initial and reoccurring payments in the week ending 22 Aug 2021.

Cumulative payments made by State since activation on 8 Jun 2021.



Queensland

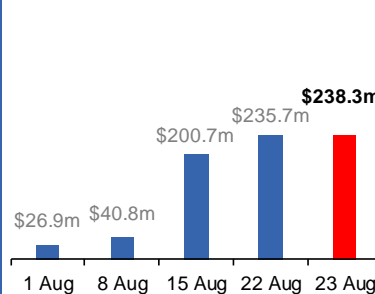
Lockdown from 31 Jul – 11 Aug
Claiming period ends 28 Aug

184,000 people have received at least one COVID Disaster Payment.

\$238.3m paid out as at 23 Aug 2021.

\$35m paid in initial and reoccurring payments in the week ending 22 Aug 2021.

Cumulative payments made by State since activation on 7 Aug 2021.



South Australia

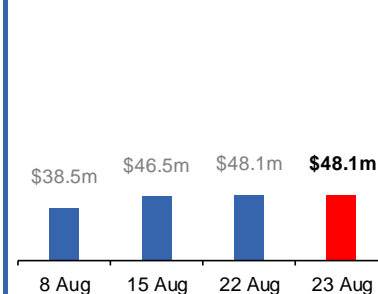
Lockdown from 21 – 27 Jul
Claiming period ends 17 Aug

86,000 people have received at least one COVID Disaster Payment.

\$48.1m paid out as at 23 Aug 2021.

\$1.6m paid in initial payments in the week ending 22 Aug 2021.

Cumulative payments made by State since activation on 28 Jul 2021.



Australian Capital Territory

Active lockdown since 12 Aug

37,000 people have received at least one COVID Disaster Payment.

\$25.6m paid out as at 23 Aug 2021.

\$22m paid in initial payments in the week ending 22 Aug 2021.

Cumulative payments made by State since activation on 20 Aug 2021.

