



**Australian Government**  
**Operation COVID Shield**

# COVID-19 Vaccine Roll-out

23 August 2021

Data as at:  
22 Aug 2021

## Total vaccine doses



**17,150,654** total vaccine doses administered nationally as at 22 August  
+ **139,555** recorded in the last 24 hours



**10,882,390**

people have had at least one dose

**52.8%**

of people over the age of 16 have had at least one dose



**6,240,640**

people are fully vaccinated

**30.3%**

of people over the age of 16 are fully vaccinated

**NSW**  
**5,905,429**  
(+59,766 daily increase)

**VIC**  
**4,420,162**  
(+35,134 daily increase)

**QLD**  
**3,120,611**  
(+19,361 daily increase)

**WA**  
**1,561,013**  
(+15,514 daily increase)

**TAS**  
**409,540**  
(+2,134 daily increase)

**SA**  
**1,135,674**  
(+5,614 daily increase)

**ACT**  
**404,130**  
(+1,491 daily increase)

**NT**  
**194,095**  
(+541 daily increase)

\*Administration state breakdown indicates state in which a vaccine was administered

\*\*Overall dose count includes instances of more than two doses per person in a small number of cases.

Data as at:  
22 Aug 2021

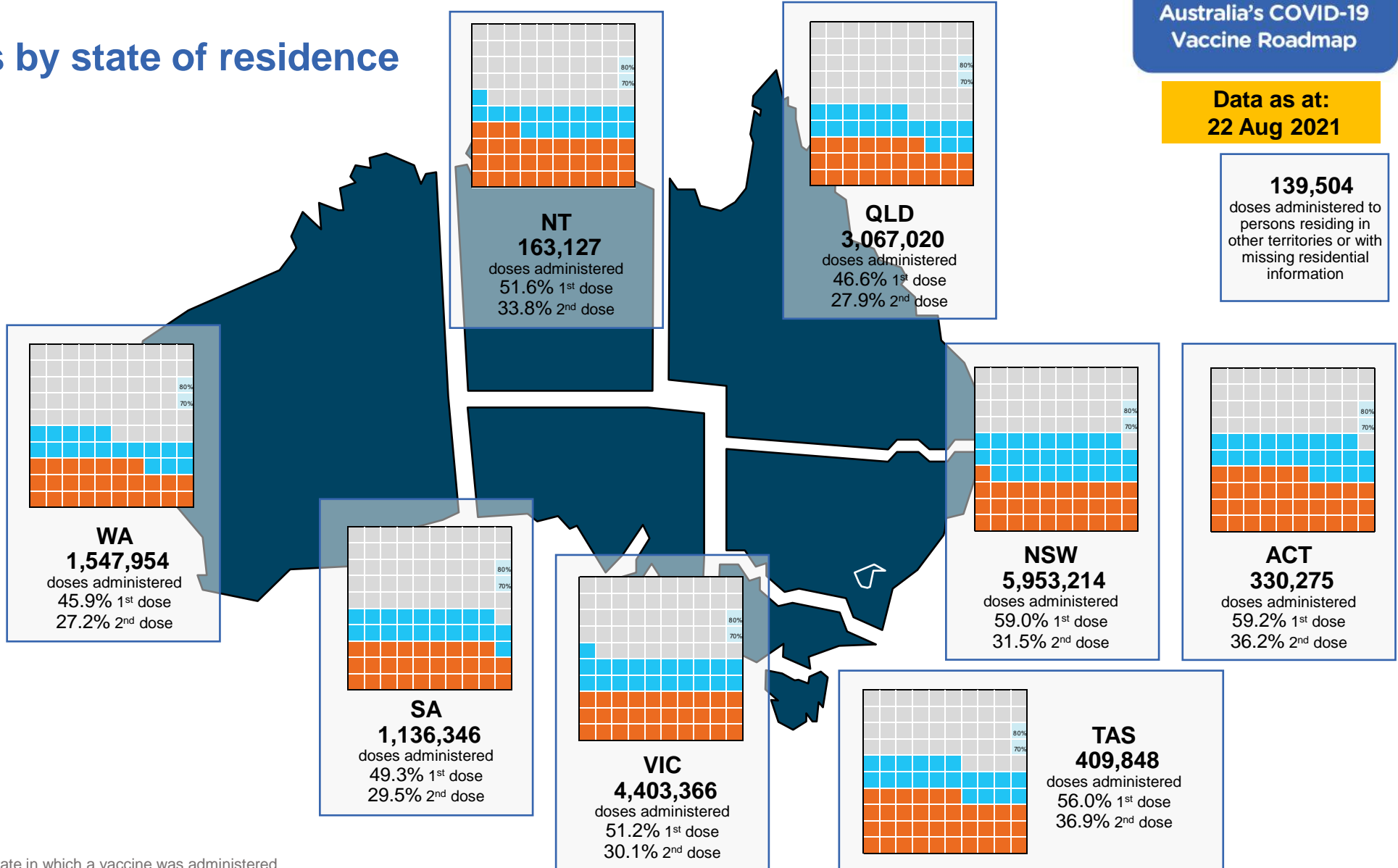
# Vaccinations by state of residence

## First doses

Age Today	4 weeks ago	8 weeks ago
16+	52.8%	38.6%
50+	75.1%	63.3%
70+	85.2%	78.1%

## Fully vaccinated

Age Today	4 weeks ago	8 weeks ago
16+	30.3%	16.7%
50+	44.2%	22.6%
70+	57.2%	37.5%



\*Residential state may differ from the state in which a vaccine was administered

## Commonwealth and Jurisdiction vaccine doses administered

Data as at:  
22 Aug 2021



**17,150,654** total vaccine doses administered nationally as at 22 August

+ **139,555** recorded in the last 24 hours

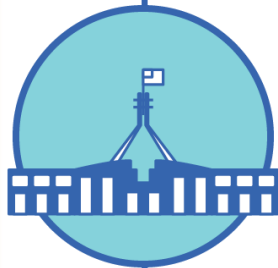


**7,159,877**

doses administered by state and territory facilities

+ **93,962**

recorded in the last 24 hours



**9,990,777**

doses administered by commonwealth facilities

+ **45,593**

recorded in the last 24 hours

**9,280,958** total vaccine doses administered in primary care settings

**709,819** total vaccine doses administered in aged care and disability settings

NSW	Jurisdictions	Commonwealth
Cumulative	2,093,786	3,811,643
Daily increase	41,058	18,708

VIC	Jurisdictions	Commonwealth
Cumulative	2,124,333	2,295,829
Daily increase	21,834	13,300

QLD	Jurisdictions	Commonwealth
Cumulative	1,199,132	1,921,479
Daily increase	12,932	6,429

WA	Jurisdictions	Commonwealth
Cumulative	722,659	838,354
Daily increase	11,792	3,722

TAS	Jurisdictions	Commonwealth
Cumulative	217,596	191,944
Daily increase	1,692	442

SA	Jurisdictions	Commonwealth
Cumulative	497,424	638,250
Daily increase	4,173	1,441

ACT	Jurisdictions	Commonwealth
Cumulative	188,003	216,127
Daily increase	6	1,485

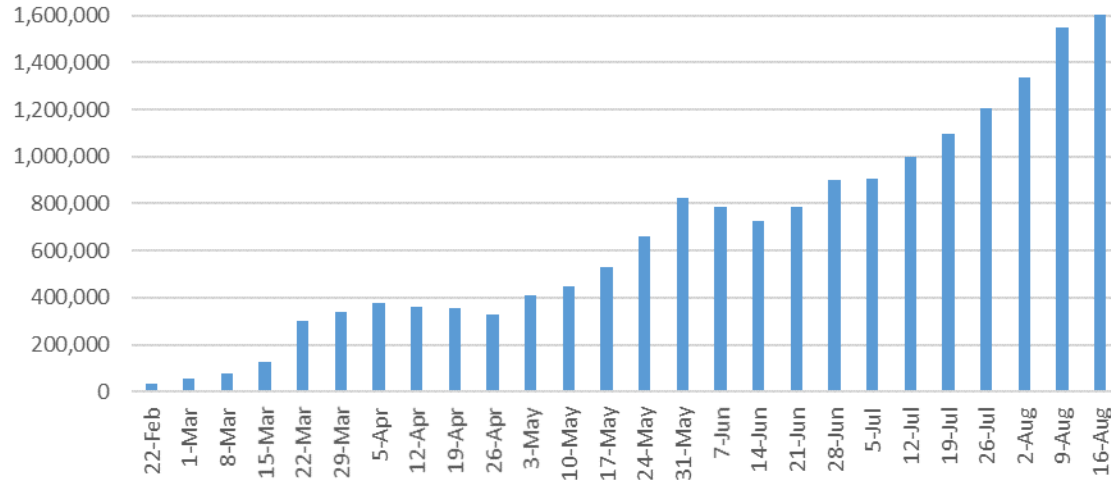
NT	Jurisdictions	Commonwealth
Cumulative	116,944	77,151
Daily increase	475	66

# Vaccine milestone charts

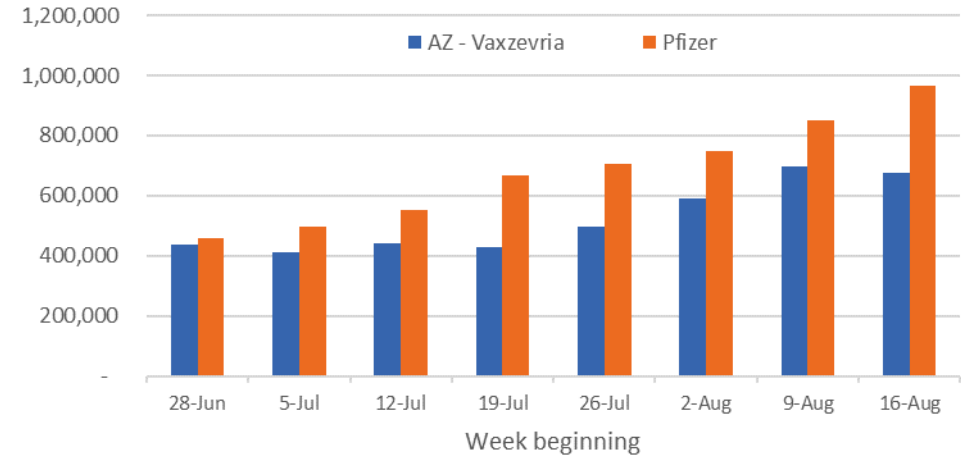
Data as at:  
22 Aug 2021

Australia's COVID-19  
Vaccine Roadmap

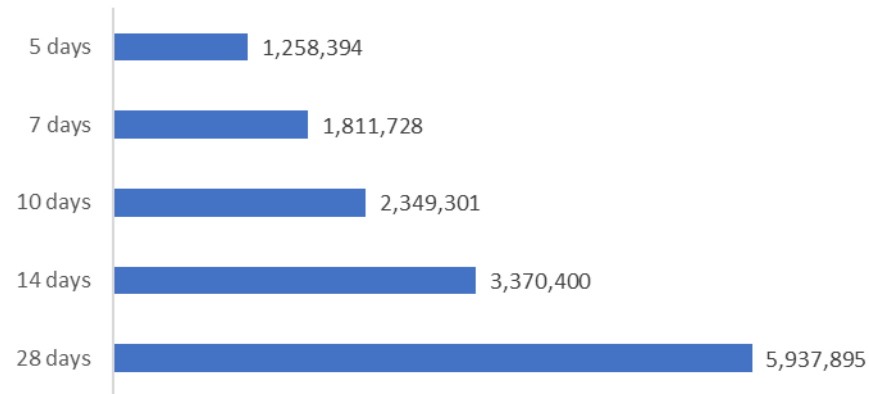
Jabs in arms by week



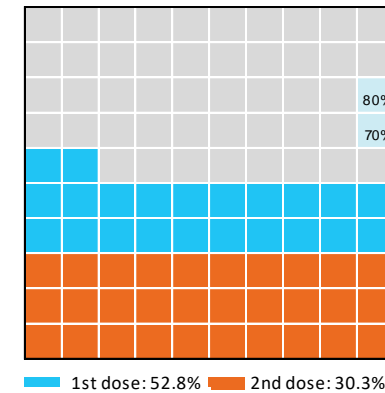
Doses by administration week and vaccine type



Doses reported



Eligible population percentage coverage



\*Sourced from the Australian Immunisation Register.

\*Each square represents 1% of the national population. Squares are filled as milestones are achieved.

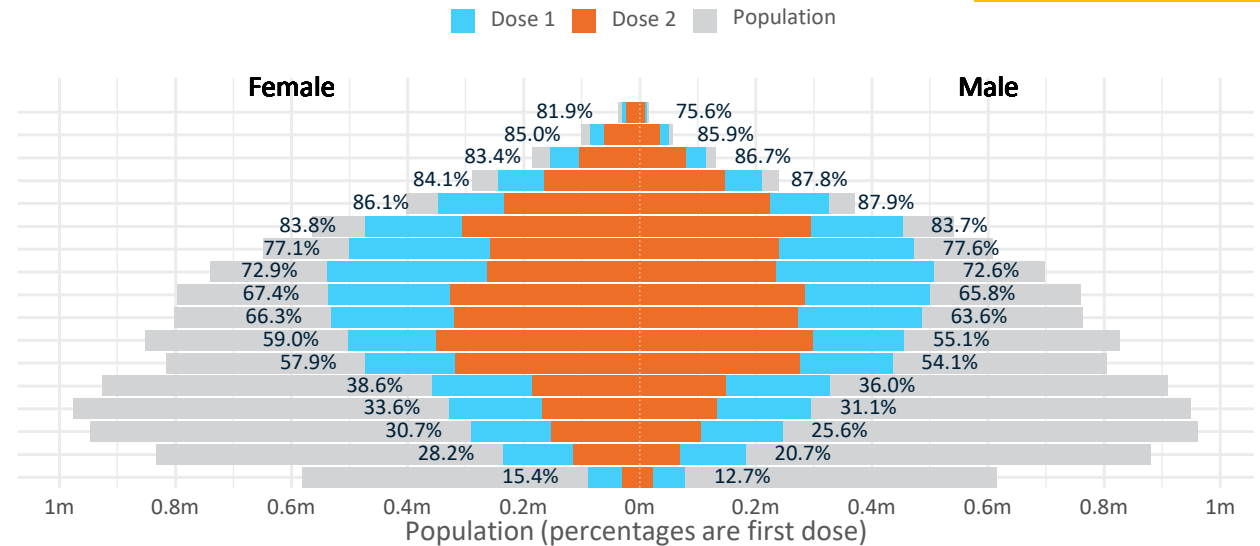
Data as at: 22 Aug 2021

# Doses by age and sex

First and second doses by age and sex, using ABS age brackets

AUS	16+	50+	70+
Dose 1	52.78% (10,882,390 doses / 20,619,959 people)	75.13% (6,573,818 doses / 8,749,703 people)	85.16% (2,499,071 doses / 2,934,706 people)
Dose 2	30.27% (6,240,640 doses / 20,619,959 people)	44.25% (3,871,519 doses / 8,749,703 people)	57.17% (1,677,853 doses / 2,934,706 people)

Age	Dose 1	Dose 2
95+	42,443 (80.2%)	31,812 (60.1%)
90-94	135,320 (85.4%)	96,356 (60.8%)
85-89	268,298 (84.9%)	183,139 (57.9%)
80-84	453,651 (85.8%)	309,849 (58.6%)
75-79	673,229 (87.0%)	456,360 (59.0%)
70-74	926,130 (83.8%)	600,337 (54.3%)
65-69	973,950 (77.4%)	496,678 (39.5%)
60-64	1,046,387 (72.8%)	497,160 (34.6%)
55-59	1,036,656 (66.6%)	609,082 (39.2%)
50-54	1,017,754 (65.1%)	590,746 (37.8%)
45-49	958,044 (57.1%)	647,950 (38.6%)
40-44	908,564 (56.1%)	592,323 (36.6%)
35-39	687,099 (37.4%)	333,988 (18.2%)
30-34	626,989 (32.6%)	300,476 (15.6%)
25-29	540,482 (28.3%)	258,514 (13.6%)
20-24	419,807 (24.5%)	184,397 (10.8%)
16-19	167,587 (14.0%)	51,473 (4.3%)



DOH (Australian Immunisation Register), ABS (Population)

	AUS	ACT	NSW	NT	QLD	SA	TAS	VIC	WA
16 and over - dose 1	10,882,390	203,753	3,875,028	98,334	1,916,241	710,489	246,346	2,768,135	971,603
16 and over - dose 2	6,240,640	124,694	2,066,915	64,466	1,146,232	424,678	162,478	1,629,776	574,549
16 and over - population	20,619,959*	344,037	6,565,651	190,571	4,112,707	1,440,400	440,172	5,407,574	2,114,978
16 and over % with dose 1	52.78%	59.22%	59.02%	51.60%	46.59%	49.33%	55.97%	51.19%	45.94%
16 and over % with dose 2	30.27%	36.24%	31.48%	33.83%	27.87%	29.48%	36.91%	30.14%	27.17%
50 and over - dose 1	6,573,818	113,972	2,188,601	41,497	1,245,990	480,379	167,869	1,679,889	615,076
50 and over - dose 2	3,871,519	69,818	1,292,295	26,770	747,964	268,833	107,448	965,616	370,801
50 and over - population	8,749,703	127,802	2,807,793	62,280	1,758,855	674,384	220,036	2,211,211	885,370
50 and over % with dose 1	75.13%	89.18%	77.95%	66.63%	70.84%	71.23%	76.29%	75.97%	69.47%
50 and over % with dose 2	44.25%	54.63%	46.03%	42.98%	42.53%	39.86%	48.83%	43.67%	41.88%
70 and over - dose 1	2,499,071	38,930	837,463	9,293	484,272	198,031	66,947	619,059	226,786
70 and over - dose 2	1,677,853	28,287	557,875	6,681	332,762	125,555	48,146	411,448	154,870
70 and over - population	2,934,706	39,946	962,606	12,343	577,767	240,514	77,155	743,519	280,281
70 and over % with dose 1	85.16%	97.46%	87.00%	75.29%	83.82%	82.34%	86.77%	83.26%	80.91%
70 and over % with dose 2	57.17%	70.81%	57.95%	54.13%	57.59%	52.20%	62.40%	55.34%	55.26%

\*National population will not equal sum of listed jurisdictions due to a small number of people counted in national population residing in some 'other' territories

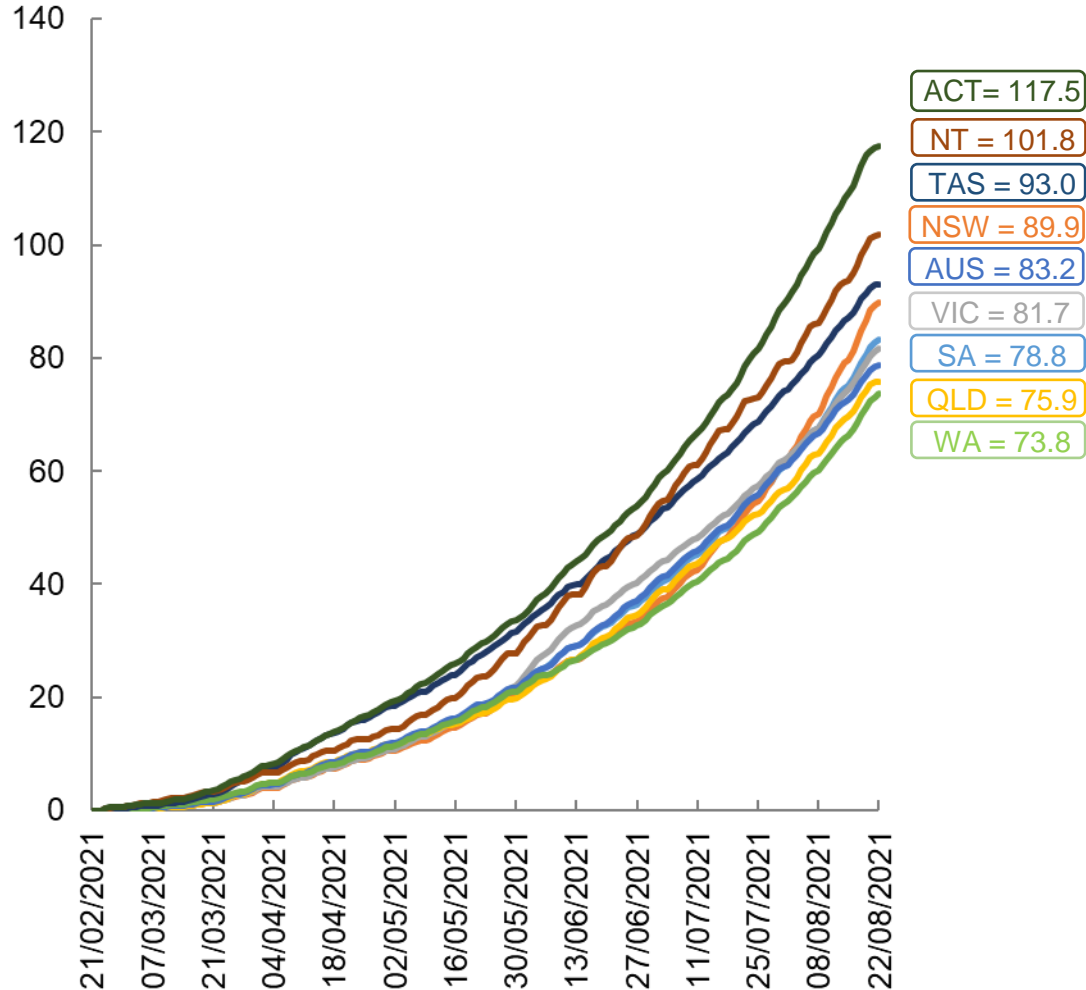
Doses sourced from Australian Immunisation Register, population from ABS ERP June 2020

# Vaccinations by location

Data as at:  
22 Aug 2021

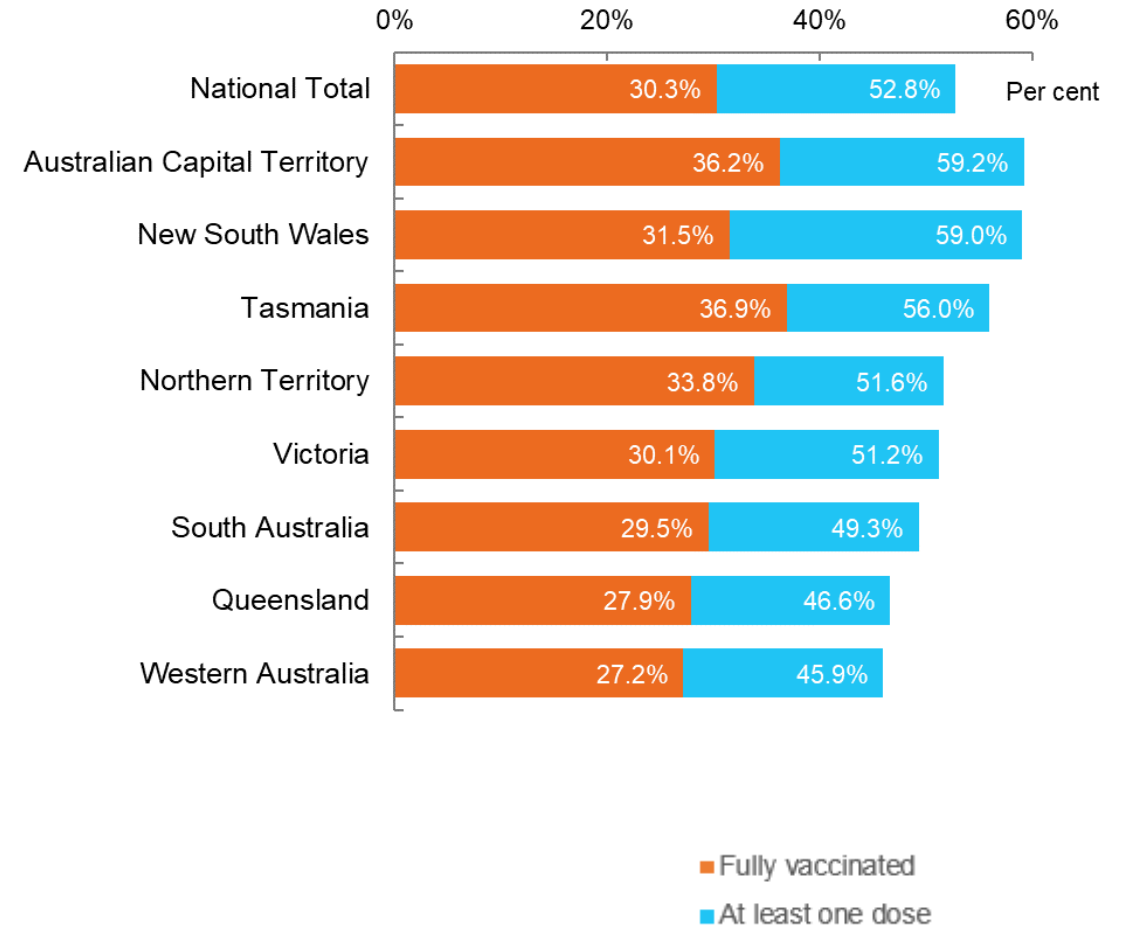
Australia's COVID-19  
Vaccine Roadmap

Cumulative total doses administered vs state populations\*



\*Not an indication of percentage vaccinated, numbers will exceed 100 due to multiple doses required per person of the population

First and Second Doses by state of residence



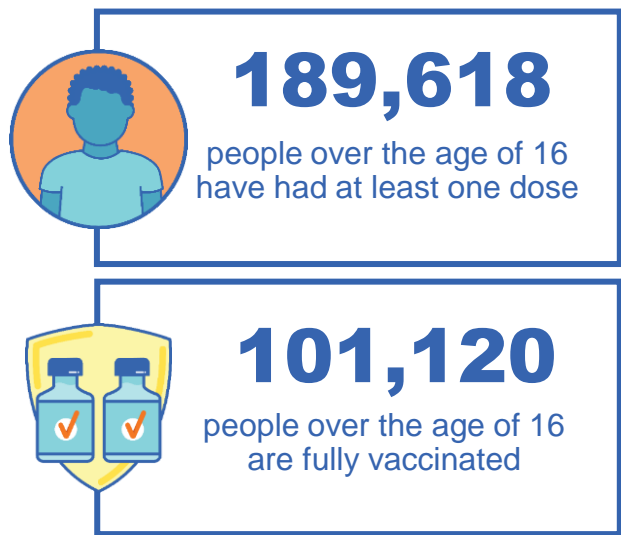
# Aboriginal and Torres Strait Islander peoples

## Number of people vaccinated

Data as at:  
22 Aug 2021  
Updated weekly  
Data reconciliation underway

**160** Aboriginal community controlled health services (ACCHS)

0#	45	24	38	11	3	21	18
<b>ACT</b>	<b>NSW</b>	<b>NT</b>	<b>QLD</b>	<b>SA</b>	<b>TAS</b>	<b>VIC</b>	<b>WA</b>



4,614 people with at least one dose  
2,188 people fully vaccinated

residing in other territories or with missing residential information  
Source: Australian Immunisation Register

\*Identifying as Aboriginal and Torres Strait Islander is optional and the estimated population may be under reported.  
\*\*Includes all Aboriginal and Torres Strait Islander peoples who have received a vaccination, not limited to those administered in an ACCHS setting  
\*\*\*Updated weekly.  
#ACCHS in the ACT are currently operating as a Commonwealth Vaccine Clinics so not included to avoid double counting



Data as at:  
22 Aug 2021

## Commonwealth primary care



### Primary care vaccine administration sites

<b>5,287</b>	<b>137</b>	<b>160</b>	<b>2,595</b>
GPs	CVCs	ACCHS	Pharmacies



**9,280,958** total vaccine doses administered primary care settings as at 22 August  
+ **42,844** recorded in the last 24 hours

### Primary care vaccinations by provider type

	Doses administered	Daily increase	7 day increase
<b>General Practice*</b> includes other Commonwealth	9,090,382	39,756	910,694
<b>Pharmacy</b>	190,576	3,088	95,910

**NSW**  
**3,506,971**  
(+18,321 daily increase)

**VIC**  
**2,165,106**  
(+11,976 daily increase)

**QLD**  
**1,784,109**  
(+5,913 daily increase)

**WA**  
**786,157**  
(+3,412 daily increase)

**TAS**  
**180,178**  
(+425 daily increase)

**SA**  
**592,482**  
(+1,287 daily increase)

**ACT**  
**156,172**  
(+1,215 daily increase)

**NT**  
**63,069**  
(+39 daily increase)

**46,714** doses administered to persons residing in other territories or with missing residential information

\*General practice includes Commonwealth Vaccination Clinics, Aboriginal Community Health Centres, Royal Flying Doctor Service and other Commonwealth vaccination facilities

Source: Australian Immunisation Register

Data as at:  
22 Aug 2021

# Commonwealth aged care and disability doses administered



People vaccinated in aged care  
and residential disability facilities

**417,049**

People with a first dose

**291,730**

People fully vaccinated

Residential aged care  
facilities

**2,569**

Sites visited for first doses

**2,568**

Sites visited for second doses

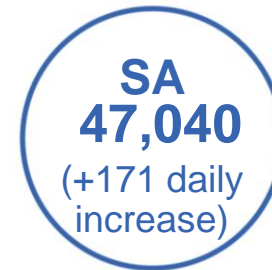
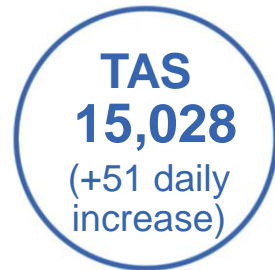


**709,819**

(+2,749 last 24 hours)

Total vaccine doses administered in aged care  
and disability facilities as at 22 August

Number of doses administered as part of the Commonwealth aged and disability care rollout



**19,814**

doses administered to persons  
residing in other territories or with  
missing residential information

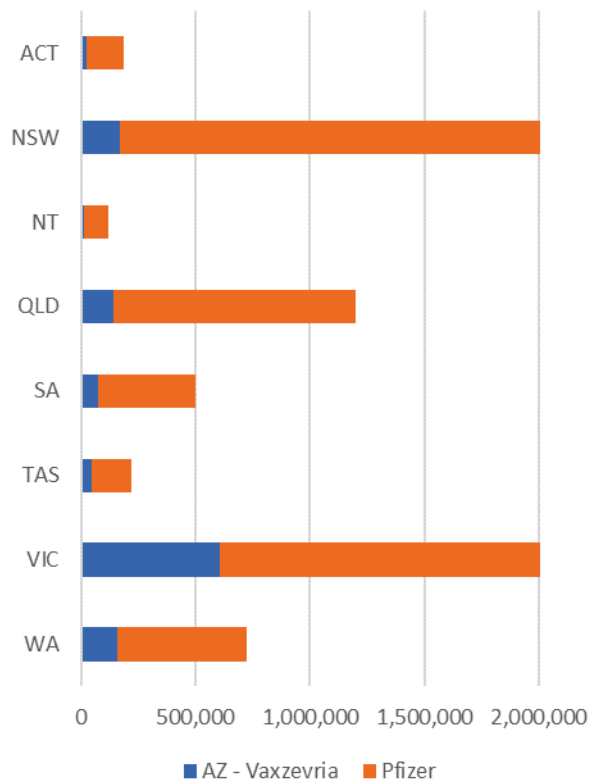
\*Sourced from the Australian Immunisation Register. Includes all persons vaccinated at participating residential aged care, disability and related industry settings.

\*\*State level breakdown indicates the residential location and may not align to the state in which the vaccination occurred.

Data as at:  
22 Aug 2021

# Jurisdiction administered

Total vaccine doses administered in State and Territory clinics as at 22 August



**7,159,877** total vaccine doses administered in State and Territory clinics as at 22 August  
 + **93,962** recorded in the last 24 hours  
 + **756,266** recorded in the last 7 days

**NSW**  
**2,093,786**  
 (+41,058 daily increase)

**VIC**  
**2,124,333**  
 (+21,834 daily increase)

**QLD**  
**1,199,132**  
 (+12,932 daily increase)

**WA**  
**722,659**  
 (+11,792 daily increase)

**TAS**  
**217,596**  
 (+1,692 daily increase)

**SA**  
**497,424**  
 (+4,173 daily increase)

**ACT**  
**188,003**  
 (+6 daily increase)

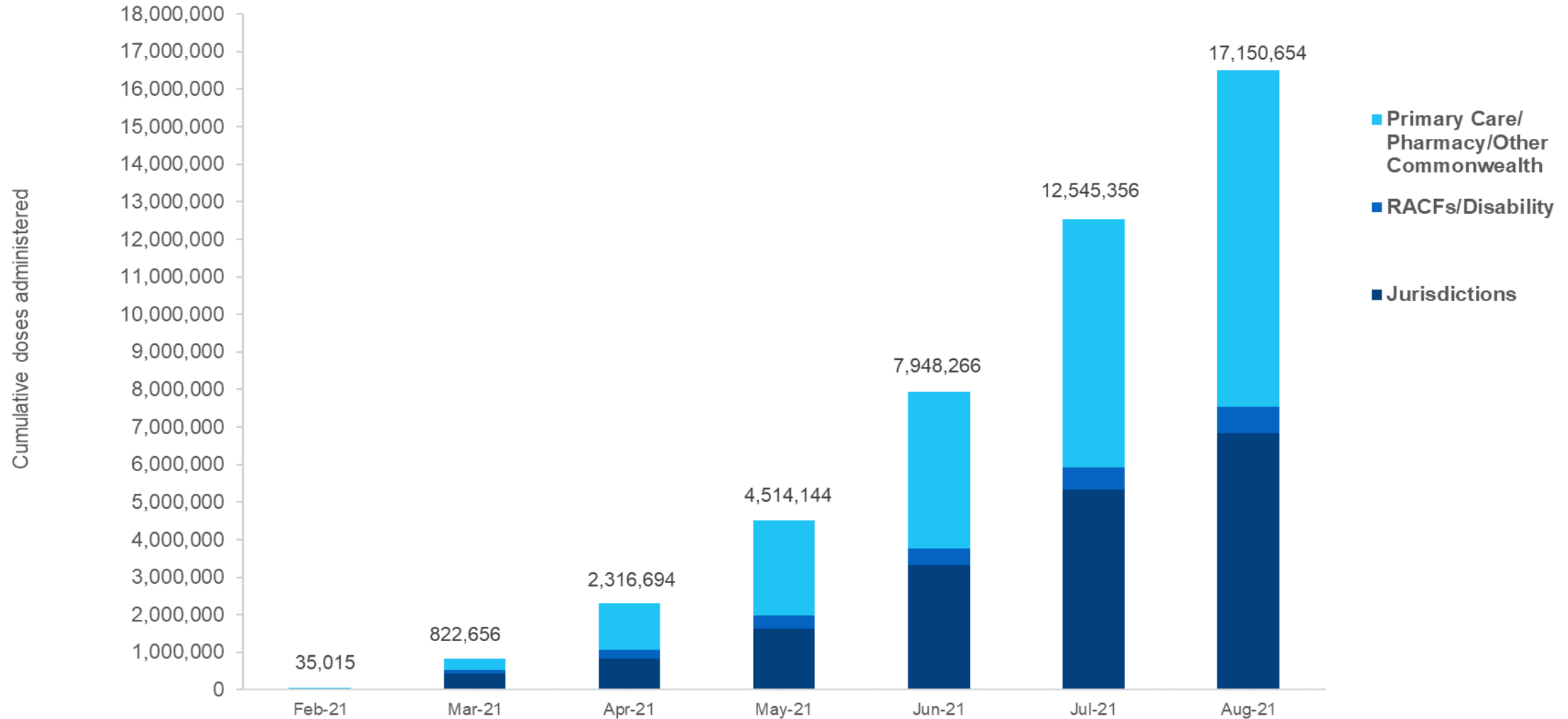
**NT**  
**116,944**  
 (+475 daily increase)

\*Sourced from the Australian Immunisation Register and self-reported data. Numbers are calculated as difference in daily cumulative reported numbers to allow for historical corrections in all self-reported data sources.

Source: Australian Immunisation Register

# Cumulative doses administered by channel

Data as at:  
22 Aug 2021



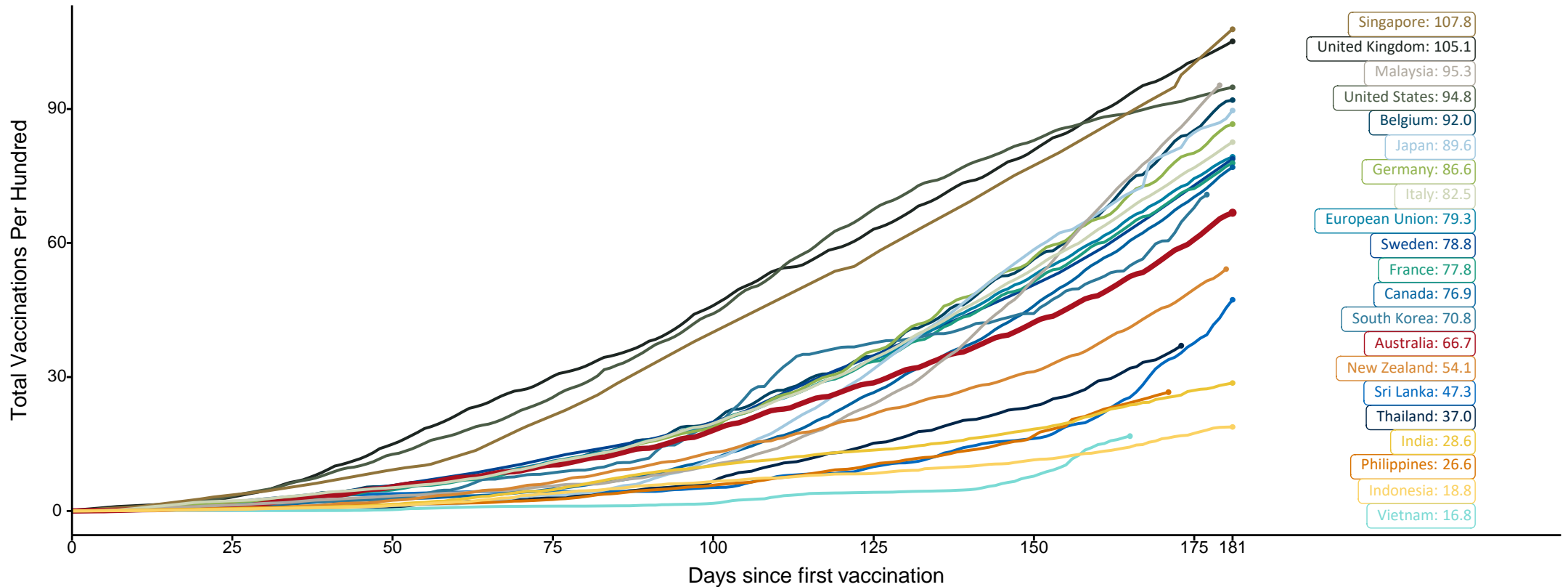
Source: Australian Immunisation Register

# Doses at equivalent stages of rollout (Day 181)

Data as at:  
22 Aug 2021

The x-axis is truncated at the length of Australia's vaccination program. Countries with intermittent reporting have had their doses per 100 imputed to Australia's current stage of rollout. Israel excluded as it is beyond scale of the graph

Cumulative doses administered (22 Aug): **17,150,654**



Source: Department of Health (Australia), Our World in Data (international)  
Latest data: 22 August

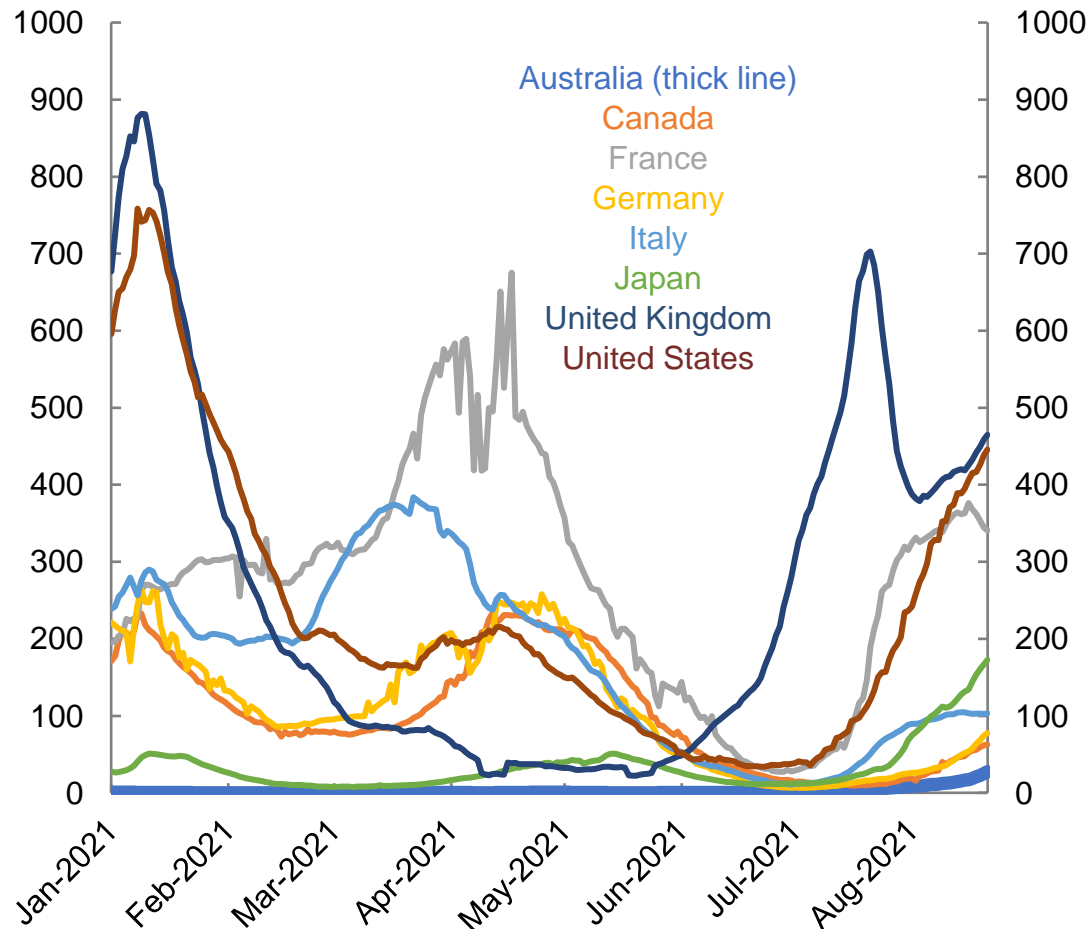
# International data – COVID-19

Data as at:  
22 Aug 2021

Australia's COVID-19  
Vaccine Roadmap

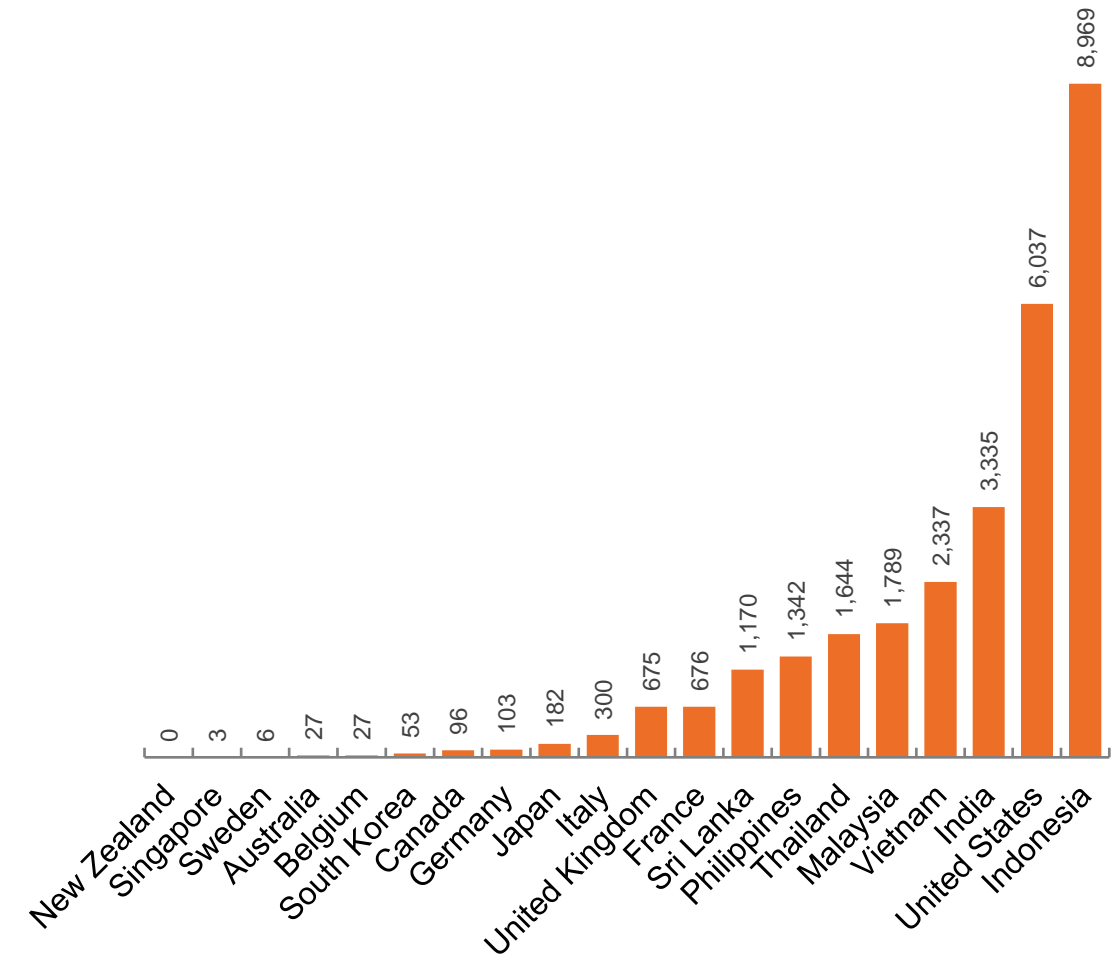
New daily cases per million in 2021, Australia and G7 countries

7 day moving average



Source: Our World in Data, extracted 23 August 2021


COVID-19 deaths in past 7 days - Australia and select countries



Source: Our World in Data, extracted 23 August 2021

Data as at midnight:  
22 Aug 2021

# Pandemic Response Payments



**1.65 million**  
People have received at least one COVID Disaster Payment (including ISP200)

**\$4.02 billion**  
Paid Out as at 22 Aug 2021

**2.70 million**  
Claims granted across three different payments




**93%**  
of Claims Received Digitally



<b>COVID Disaster Payment:</b>	2.69 million claims received - 1.54 million individuals paid a total of \$3.91 billion.
<b>\$200 Income Support Payment:</b>	131,000 claims received - 110,000 individuals paid a total of \$48.46 million.
<b>Pandemic Leave Disaster Payment:</b>	43,000 claims received - 36,000 individuals paid a total of \$56.89 million.

## COVID-19 DISASTER PAYMENTS



**THREE PAYMENTS AVAILABLE**

**COVID Disaster Payment**  
assisting during a lockdown event in a Commonwealth hotspot.

**Income Support Payment \$200**  
for income support recipients who lost at least 8 hours of work.

**Pandemic Leave Disaster Payment**  
for those who have to self-isolate, quarantine or care.

For more information visit:  
[servicesaustralia.gov.au](https://servicesaustralia.gov.au)

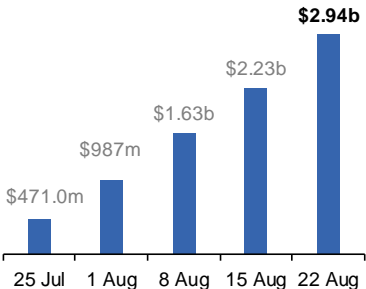
**New South Wales**  
Active lockdown since 24 Jun

**891,000 people have received at least one COVID Disaster Payment.**

**\$2.94b paid out as at 22 Aug 2021.**

**\$709m paid in initial and reoccurring payments in the week ending 22 Aug 2021.**

Cumulative payments made by State since activation on 1 Jul 2021.



Date	Cumulative Payments (\$b)
25 Jul	\$471.0m
1 Aug	\$987m
8 Aug	\$1.63b
15 Aug	\$2.23b
22 Aug	\$2.94b

**Victoria**  
Active lockdown (#6) since 6 Aug

**353,000 people have received at least one COVID Disaster Payment.**

**\$667.7m paid out as at 22 Aug 2021.**

**\$298m paid in initial and reoccurring payments in the week ending 22 Aug 2021.**

Cumulative payments made by State since activation on 8 Jun 2021.



Date	Cumulative Payments (\$m)
25 Jul	\$102.9m
1 Aug	\$223.5m
8 Aug	\$260.8m
15 Aug	\$369.9m
22 Aug	\$667.7m

**Queensland**  
Lockdown from 31 Jul – 11 Aug  
Claiming period ends 28 Aug

**181,000 people have received at least one COVID Disaster Payment.**

**\$235.7m paid out as at 22 Aug 2021.**

**\$35m paid in initial and reoccurring payments in the week ending 22 Aug 2021.**

Cumulative payments made by State since activation on 7 Aug 2021.



Date	Cumulative Payments (\$m)
1 Aug	\$26.9m
8 Aug	\$40.8m
15 Aug	\$200.7m
22 Aug	\$235.7m

**South Australia**  
Lockdown from 21 – 27 Jul  
Claiming period ends 17 Aug

**86,000 people have received at least one COVID Disaster Payment.**

**\$48.1m paid out as at 22 Aug 2021.**

**\$1.6m paid in initial payments in the week ending 22 Aug 2021.**

Cumulative payments made by State since activation on 28 Jul 2021.



Date	Cumulative Payments (\$m)
8 Aug	\$38.5m
15 Aug	\$46.5m
22 Aug	\$48.1m

**Australian Capital Territory**  
Active lockdown since 12 Aug

**32,000 people have received at least one COVID Disaster Payment.**

**\$22.3m paid out as at 22 Aug 2021.**

**\$22m paid in initial payments in the week ending 22 Aug 2021.**

Cumulative payments made by State since activation on 20 Aug 2021.



Date	Cumulative Payments (\$m)
22 Aug	\$22.3m

# Administration and Utilisation

## Doses as at Week 26

	Ordered (including coming week)	Available (delivered weeks 1-25, until 15 August)	Administered (weeks 1-26 until 22 August)	Available minus Administered	Estimated Dose Utilisation % (see note)
NSW	2,949,010	2,367,650	2,093,786	273,864	98%
VIC	2,643,230	2,328,330	2,124,333	203,997	Fully utilised
QLD	1,500,090	1,370,570	1,199,132	171,438	97%
WA	830,398	787,168	722,659	64,509	Fully utilised
SA	633,040	566,480	497,424	69,056	98%
TAS	283,480	236,530	217,596	18,934	Fully utilised
NT	171,974	147,716	116,944	30,772	89%
ACT	210,118	192,788	188,003	4,785	Fully utilised
<b>Jurisdiction delivered total</b>	<b>9,221,340</b>	<b>7,997,232</b>	<b>7,159,877</b>	<b>837,355</b>	<b>Fully utilised</b>
Commonwealth Aged Care & Disability	769,762	732,988	709,819	23,169	N/A
Commonwealth Primary Care	12,903,072	12,117,248	9,280,958	2,836,290	87%
<b>Total</b>	<b>22,894,174</b>	<b>20,847,468</b>	<b>17,150,654</b>	<b>3,696,814</b>	<b>92%</b>

### About this data:

- Distributed – Total doses delivered to sites. Based on logistics provider data. This figure includes doses allocated for administration in the coming week.
- Available – total doses that could have been administered to date, less doses re-distributed from States & Territories to Primary Care or Aged Care & Disability (i.e. does not include those deliveries recently received, and intended for use in the coming week).
- Administered – Doses administered as at 22 August 2021.
- The dose utilisation is calculated based on the total doses administered and a small % wastage in line with international standards in relation to total available doses.
- For Aged Care & Disability, the doses available for administration is for the full period (Weeks 1-26).
- Aged Care & Disability utilisation is not provided as the in-reach rollout is demand-based, with vaccines ordered based on resident numbers.