



Australian Government
Operation COVID Shield

COVID-19 Vaccine Roll-out

22 August 2021

Data as at:
21 Aug 2021

Total vaccine doses



17,011,099 total vaccine
doses administered nationally as at 21 August
+196,001 recorded in the last 24 hours



10,793,183

people have had at least one
dose

52.3%

of people over the age of 16
have had at least one dose



6,190,566

people are fully vaccinated

30.0%

of people over the age of 16 are
fully vaccinated

NSW
5,845,663
(+79,383 daily
increase)

VIC
4,385,028
(+49,457 daily
increase)

QLD
3,101,250
(+30,907 daily
increase)

WA
1,545,499
(+18,982 daily
increase)

TAS
407,406
(+3,944 daily
increase)

SA
1,130,060
(+9,593 daily
increase)

ACT
402,639
(+2,354 daily
increase)

NT
193,554
(+1,381 daily
increase)

*Administration state breakdown indicates state in which a vaccine was administered

**Overall dose count includes instances of more than two doses per person in a small number of cases.

Data as at:
21 Aug 2021

138,115
doses administered to
persons residing in
other territories or with
missing residential
information

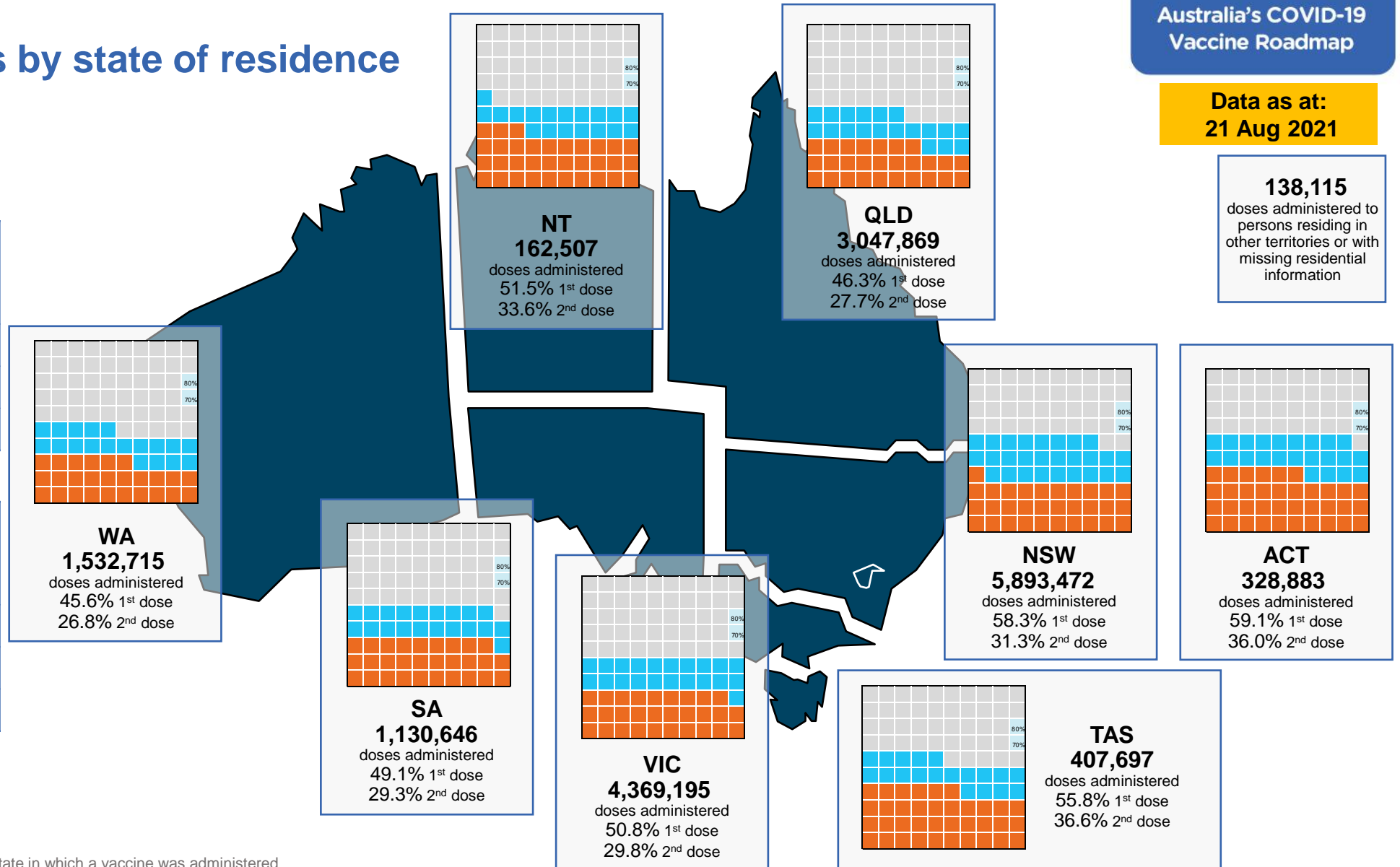
Vaccinations by state of residence

First doses

Age Today	4 weeks ago	8 weeks ago
16+	52.3%	38.4%
50+	75.0%	63.2%
70+	85.1%	69.7%

Fully vaccinated

Age Today	4 weeks ago	8 weeks ago
16+	30.0%	16.5%
50+	44.0%	22.4%
70+	57.0%	37.3%



*Residential state may differ from the state in which a vaccine was administered

Commonwealth and Jurisdiction vaccine doses administered

Data as at:
21 Aug 2021



17,011,099 total vaccine
doses administered nationally as at 21 August

+196,001 recorded in the last 24 hours

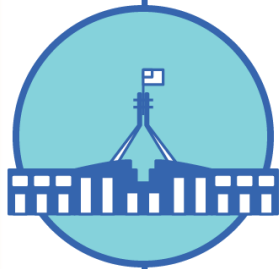


7,065,915

doses administered by state
and territory facilities

+102,307

recorded in the last 24 hours



9,945,184

doses administered by
commonwealth facilities

+93,694

recorded in the last 24 hours

9,238,114 total vaccine doses
administered in primary care settings

707,070 total vaccine doses
administered in aged care and disability
settings

NSW	Jurisdictions	Commonwealth
Cumulative	2,052,728	3,792,935
Daily increase	38,618	40,765

VIC	Jurisdictions	Commonwealth
Cumulative	2,102,499	2,282,529
Daily increase	25,104	24,353

QLD	Jurisdictions	Commonwealth
Cumulative	1,186,200	1,915,050
Daily increase	19,106	11,801

WA	Jurisdictions	Commonwealth
Cumulative	710,867	834,632
Daily increase	11,660	7,322

TAS	Jurisdictions	Commonwealth
Cumulative	215,904	191,502
Daily increase	2,166	1,778

SA	Jurisdictions	Commonwealth
Cumulative	493,251	636,809
Daily increase	4,696	4,897

ACT	Jurisdictions	Commonwealth
Cumulative	187,997	214,642
Daily increase	23	2,331

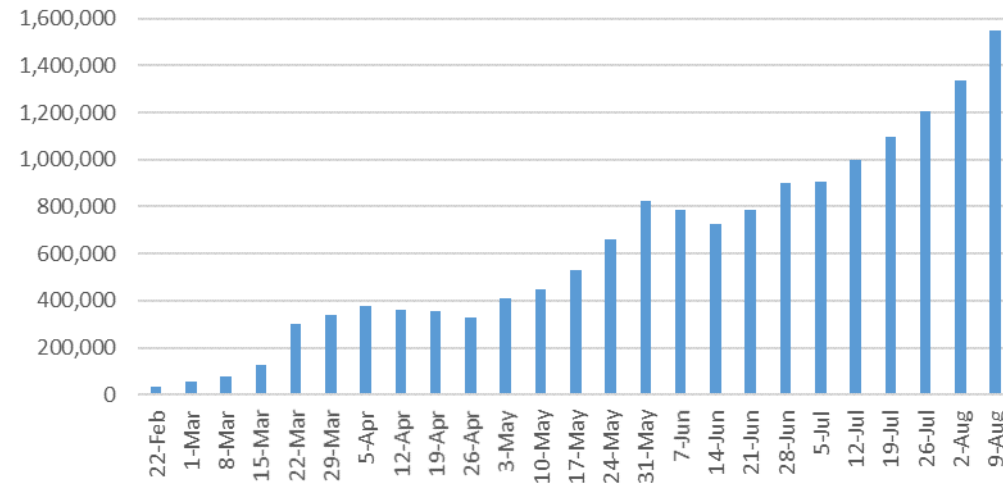
NT	Jurisdictions	Commonwealth
Cumulative	116,469	77,085
Daily increase	934	447

Vaccine milestone charts

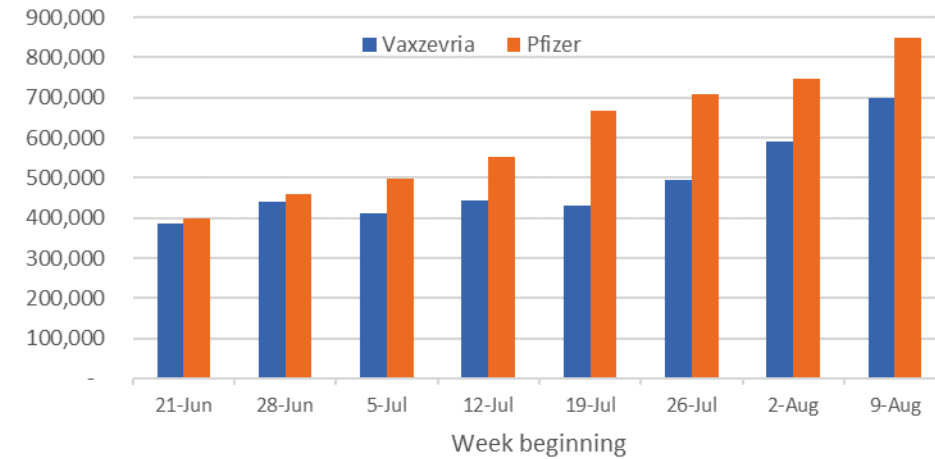
Data as at:
21 Aug 2021

Australia's COVID-19
Vaccine Roadmap

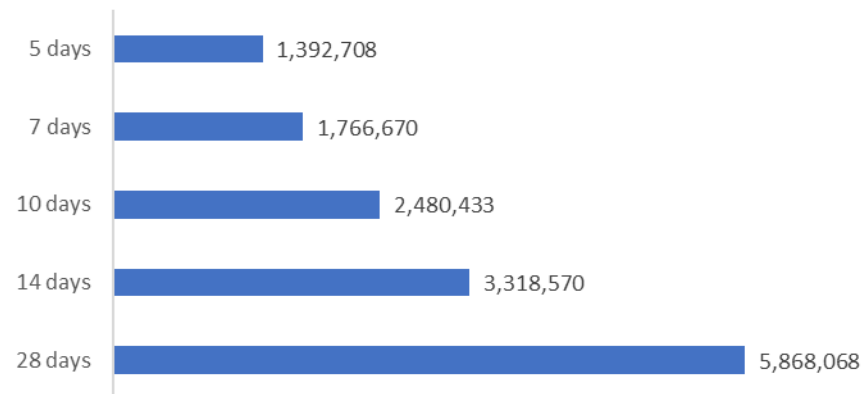
Jabs in arms by week



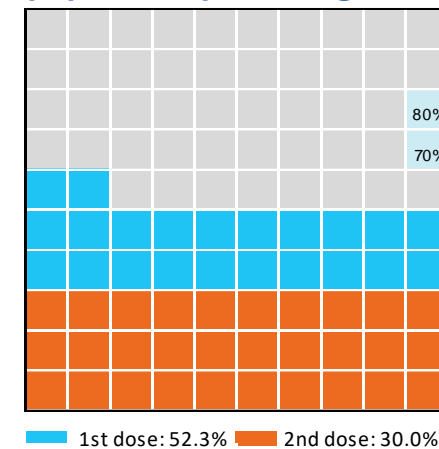
Doses by administration week and vaccine type



Doses reported



Eligible population percentage coverage



*Sourced from the Australian Immunisation Register. Recent days may be understated.

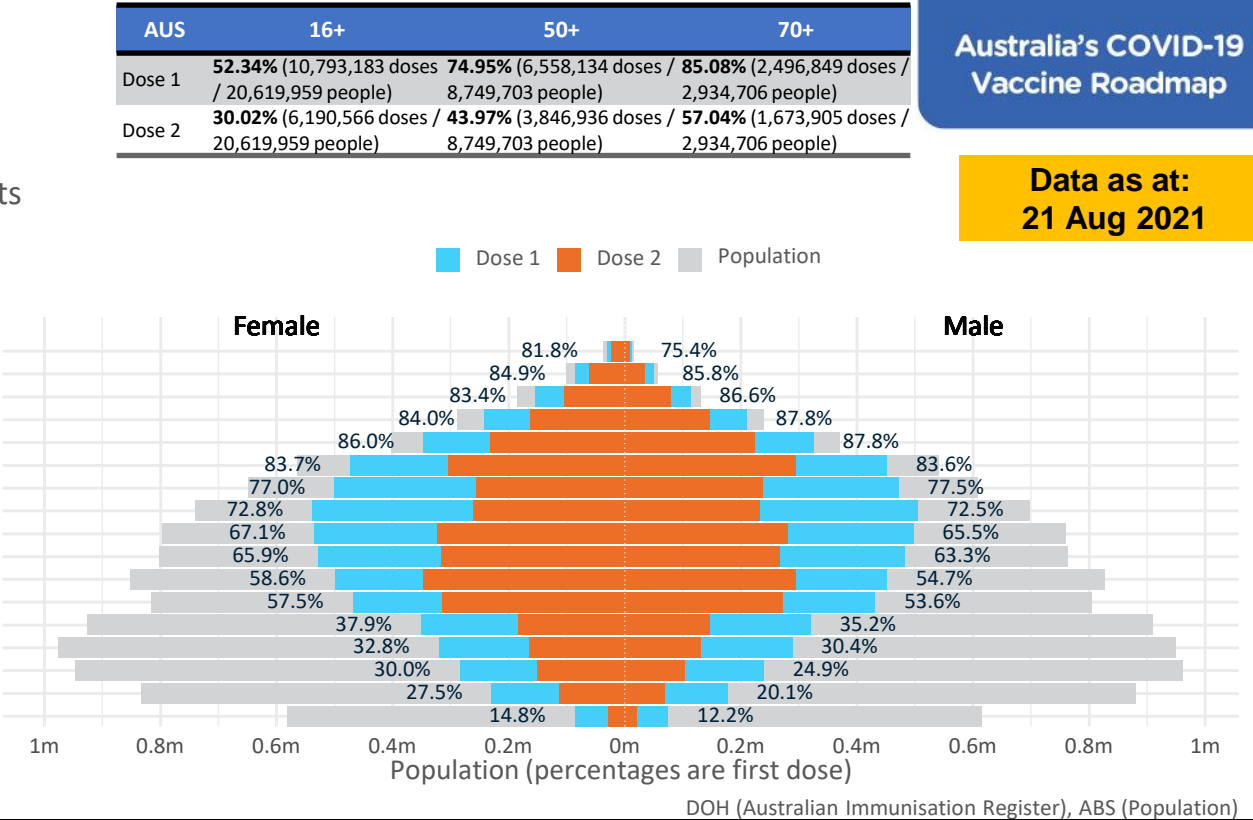
*Each square represents 1% of the national population. Squares are filled as milestones are achieved.

Doses by age and sex

First and second doses by age and sex, using ABS age brackets

Data as at:
21 Aug 2021

Age	Dose 1	Dose 2
95+	42,388 (80.1%)	31,763 (60.0%)
90-94	135,190 (85.3%)	96,171 (60.7%)
85-89	268,045 (84.8%)	182,747 (57.8%)
80-84	453,211 (85.8%)	309,138 (58.5%)
75-79	672,599 (86.9%)	455,231 (58.8%)
70-74	925,416 (83.7%)	598,855 (54.2%)
65-69	972,648 (77.3%)	493,779 (39.2%)
60-64	1,044,294 (72.7%)	493,381 (34.3%)
55-59	1,032,320 (66.4%)	602,603 (38.7%)
50-54	1,012,023 (64.7%)	583,268 (37.3%)
45-49	951,416 (56.7%)	642,070 (38.3%)
40-44	901,179 (55.6%)	586,477 (36.2%)
35-39	672,758 (36.7%)	330,000 (18.0%)
30-34	612,199 (31.8%)	296,812 (15.4%)
25-29	527,773 (27.7%)	255,638 (13.4%)
20-24	408,703 (23.9%)	182,191 (10.6%)
16-19	161,021 (13.5%)	50,442 (4.2%)



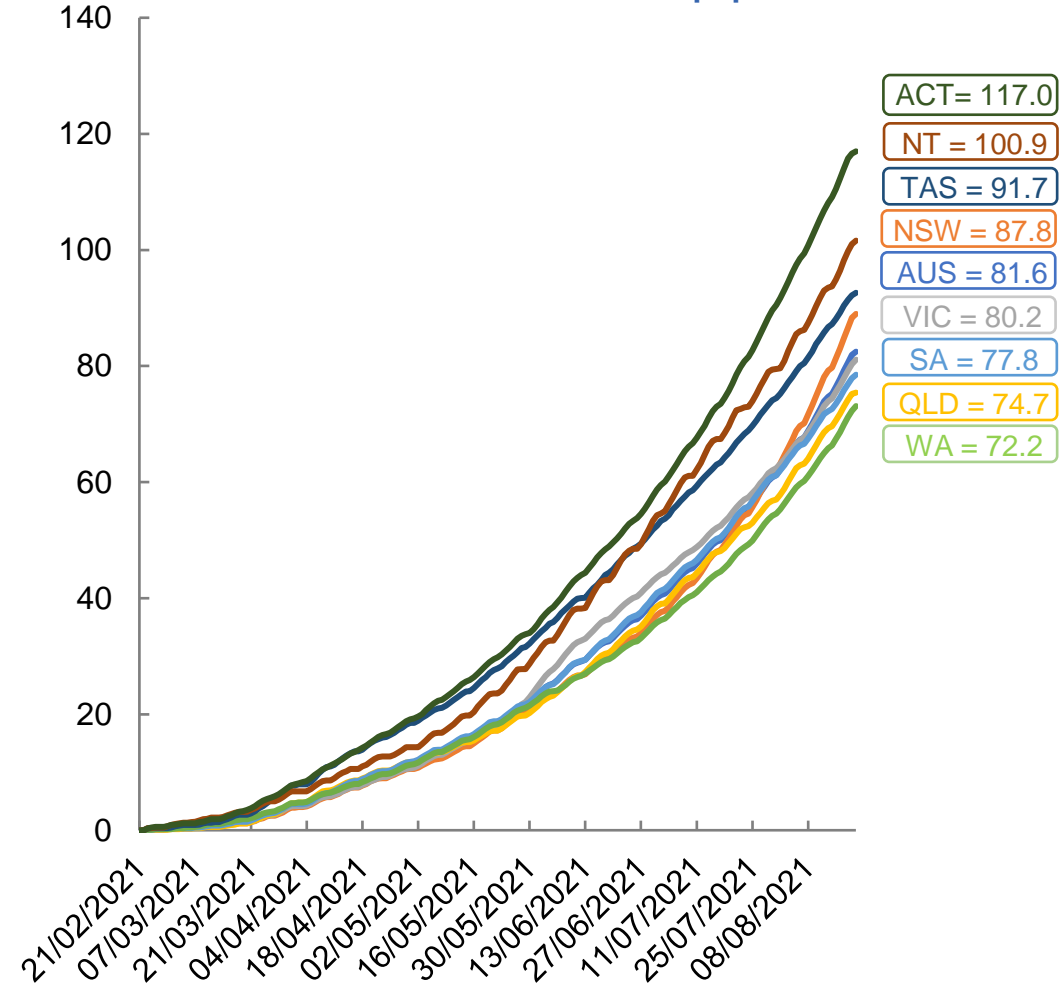
	AUS	ACT	NSW	NT	QLD	SA	TAS	VIC	WA
16 and over - dose 1	10,793,183	203,233	3,829,992	98,058	1,904,494	707,271	245,437	2,749,736	963,588
16 and over - dose 2	6,190,566	123,827	2,052,364	64,123	1,138,868	422,198	161,237	1,614,057	567,340
16 and over - population	20,619,959*	344,037	6,565,651	190,571	4,112,707	1,440,400	440,172	5,407,574	2,114,978
16 and over % with dose 1	52.34%	59.07%	58.33%	51.45%	46.31%	49.10%	55.76%	50.85%	45.56%
16 and over % with dose 2	30.02%	35.99%	31.26%	33.65%	27.69%	29.31%	36.63%	29.85%	26.82%
50 and over - dose 1	6,558,134	113,865	2,182,326	41,450	1,243,222	479,489	167,664	1,675,980	613,685
50 and over - dose 2	3,846,936	69,148	1,286,488	26,721	744,591	267,577	106,686	955,759	368,076
50 and over - population	8,749,703	127,802	2,807,793	62,280	1,758,855	674,384	220,036	2,211,211	885,370
50 and over % with dose 1	74.95%	89.09%	77.72%	66.55%	70.68%	71.10%	76.20%	75.79%	69.31%
50 and over % with dose 2	43.97%	54.11%	45.82%	42.90%	42.33%	39.68%	48.49%	43.22%	41.57%
70 and over - dose 1	2,496,849	38,886	836,479	9,293	483,966	197,909	66,917	618,497	226,639
70 and over - dose 2	1,673,905	28,193	556,868	6,681	332,226	125,355	48,024	409,803	154,540
70 and over - population	2,934,706	39,946	962,606	12,343	577,767	240,514	77,155	743,519	280,281
70 and over % with dose 1	85.08%	97.35%	86.90%	75.29%	83.76%	82.29%	86.73%	83.19%	80.86%
70 and over % with dose 2	57.04%	70.58%	57.85%	54.13%	57.50%	52.12%	62.24%	55.12%	55.14%

*National population will not equal sum of listed jurisdictions due to a small number of people counted in national population residing in some 'other' territories

Doses sourced from Australian Immunisation Register, population from ABS ERP June 2020

Vaccinations by location

Cumulative total doses administered vs state populations*

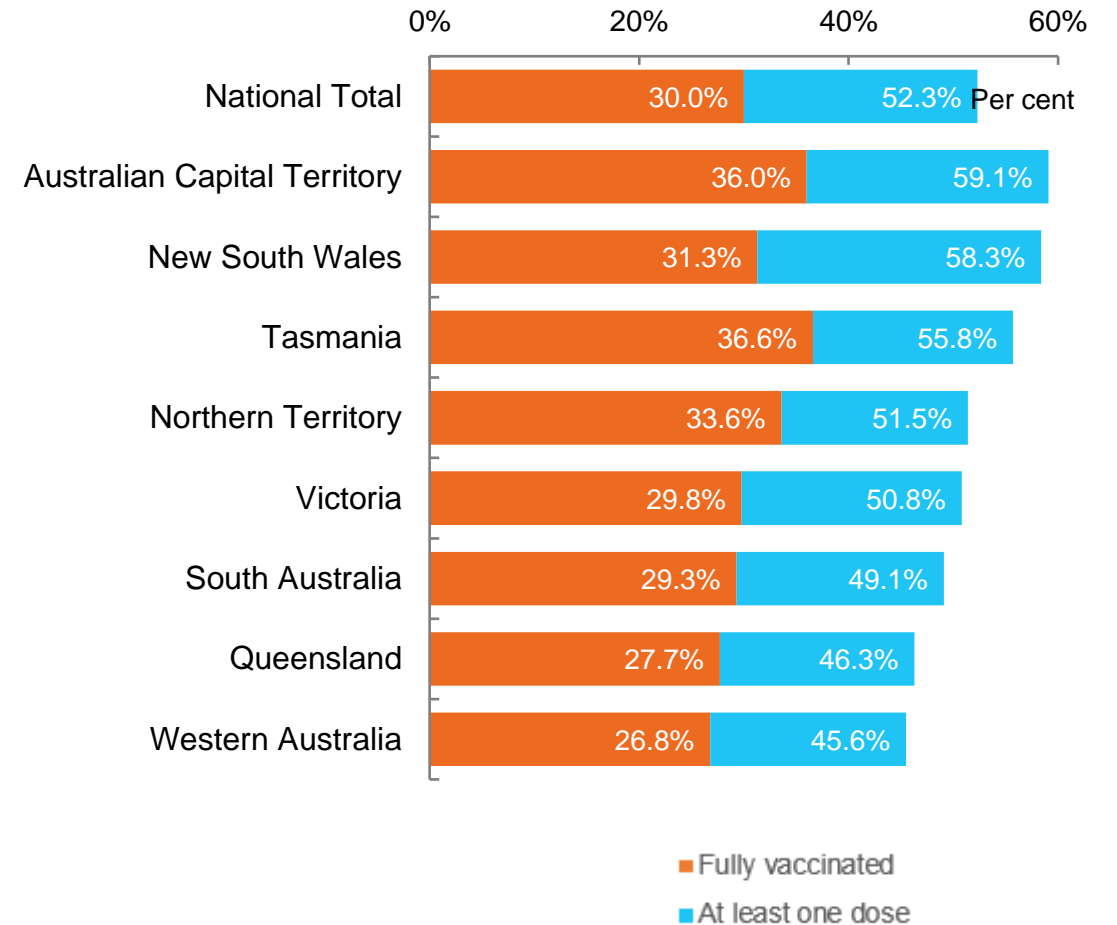


*Not an indication of percentage vaccinated, numbers will exceed 100 due to multiple doses required per person of the population

Data as at:
21 Aug 2021

Australia's COVID-19
Vaccine Roadmap

First and Second Doses by state of residence

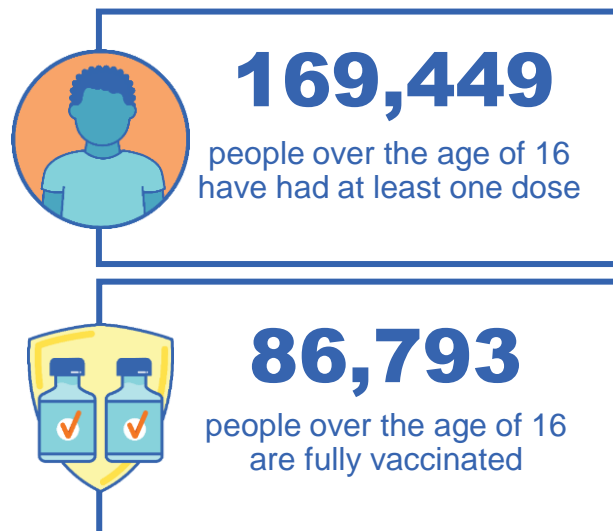


Aboriginal and Torres Strait Islander peoples

Number of people vaccinated

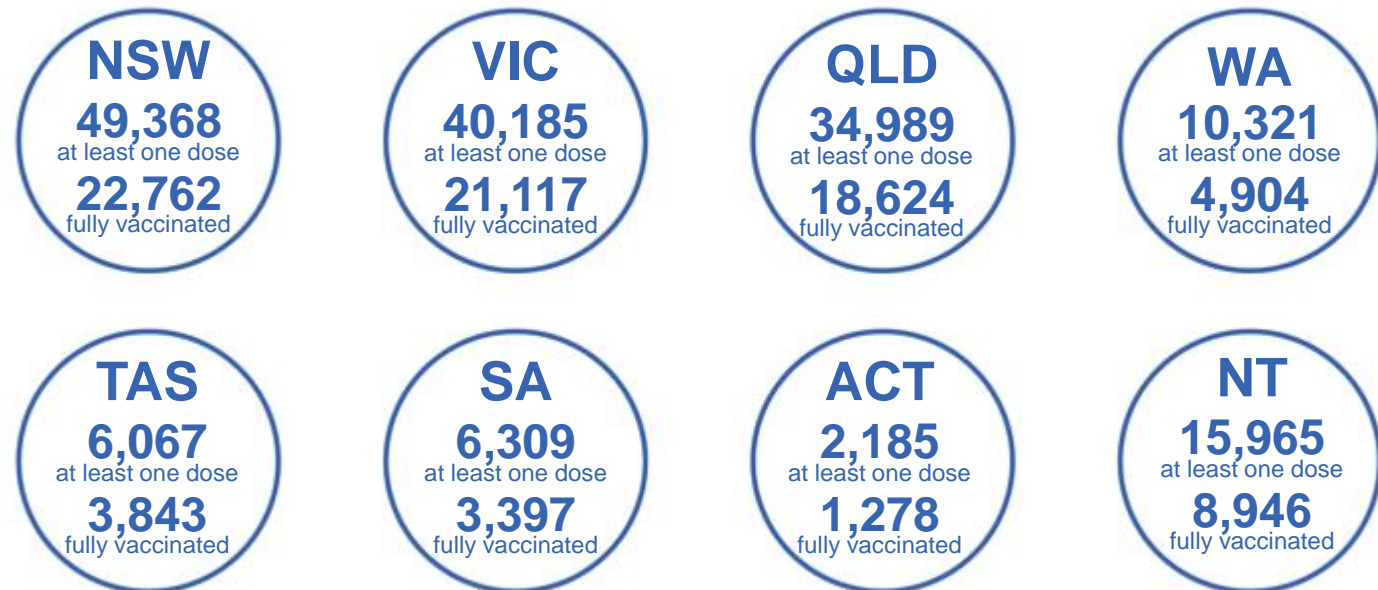
Data as at:
15 Aug 2021
Updated weekly

Australia's COVID-19
Vaccine Roadmap



160 Aboriginal community controlled health services (ACCHS)

0#	45	24	38	11	3	21	18
ACT	NSW	NT	QLD	SA	TAS	VIC	WA



4,060 people with at least one dose
1,922 people fully vaccinated

*Identifying as Aboriginal and Torres Strait Islander is optional and the estimated population may be under reported.

**Includes all Aboriginal and Torres Strait Islander peoples who have received a vaccination, not limited to those administered in an ACCHS setting

***Updated weekly

#ACCHS in the ACT are currently operating as a Commonwealth Vaccine Clinics so not included to avoid double counting

residing in other territories or with missing residential information

Source: Australian Immunisation Register

Data as at:
21 Aug 2021

Commonwealth primary care



Primary care vaccine administration sites

5,250	136	160	2,479
GPs	CVCs	ACCHS	Pharmacies



9,238,114 total vaccine doses administered primary care settings as at 21 August
+87,921 recorded in the last 24 hours

Primary care vaccinations by provider type

	Doses administered	Daily increase	7 day increase
General Practice* includes other Commonwealth	9,050,626	79,714	907,324
Pharmacy	187,488	8,207	95,999



46,458 doses administered to persons residing in other territories or with missing residential information

*General practice includes Commonwealth Vaccination Clinics, Aboriginal Community Health Centres, Royal Flying Doctor Service and other Commonwealth vaccination facilities

Source: Australian Immunisation Register

Data as at:
21 Aug 2021

Commonwealth aged care and disability doses administered



People vaccinated in aged care
and residential disability facilities

415,568

People with a first dose

290,470

People fully vaccinated

Residential aged care
facilities

2,569

Sites visited for first doses

2,568

Sites visited for second doses



707,070

(+5,773 last 24 hours)

Total vaccine doses administered in aged care
and disability facilities as at 21 August

Number of doses administered as part of the Commonwealth aged and disability care rollout

NSW
309,484

(+2,331 last
24 hours)

VIC
143,840

(+1,284 last
24 hours)

QLD
106,962

(+1,096 last
24 hours)

WA
51,377

(+176 last
24 hours)

TAS
14,977

(+209 last
24 hours)

SA
46,869

(+275 last
24 hours)

ACT
8,788

(+206 last
24 hours)

NT
4,977

(+151 last
24 hours)

19,796

doses administered to persons
residing in other territories or with
missing residential information

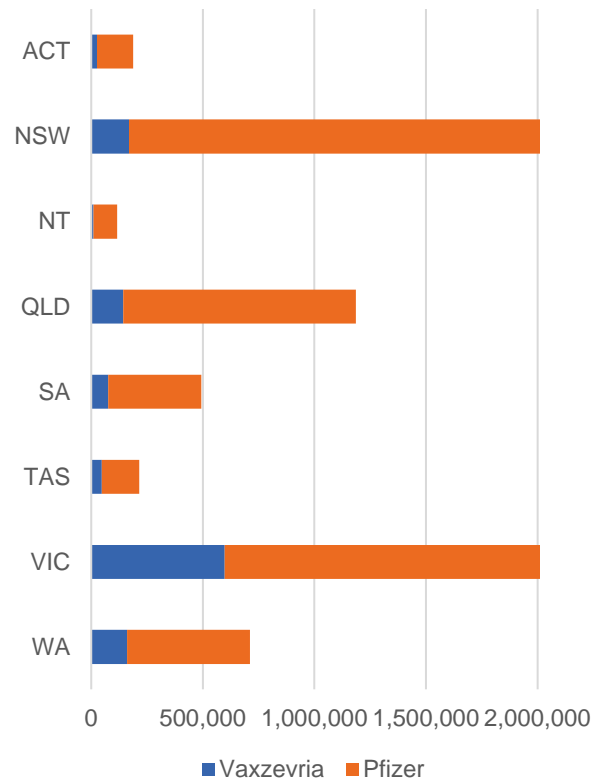
*Sourced from the Australian Immunisation Register. Includes all persons vaccinated at participating residential aged care, disability and related industry settings.

**State level breakdown indicates the residential location and may not align to the state in which the vaccination occurred.

Data as at:
21 Aug 2021

Jurisdiction administered

Total vaccine doses administered in State and Territory clinics as at 21 August



7,065,915 total vaccine doses administered
in State and Territory clinics as at 21 August
+102,307 recorded in the last 24 hours
+715,059 recorded in the last 7 days

NSW
2,052,728
(+38,618 daily increase)

VIC
2,102,499
(+25,104 daily increase)

QLD
1,186,200
(+19,106 daily increase)

WA
710,867
(+11,660 daily increase)

TAS
215,904
(+2,166 daily increase)

SA
493,251
(+4,696 daily increase)

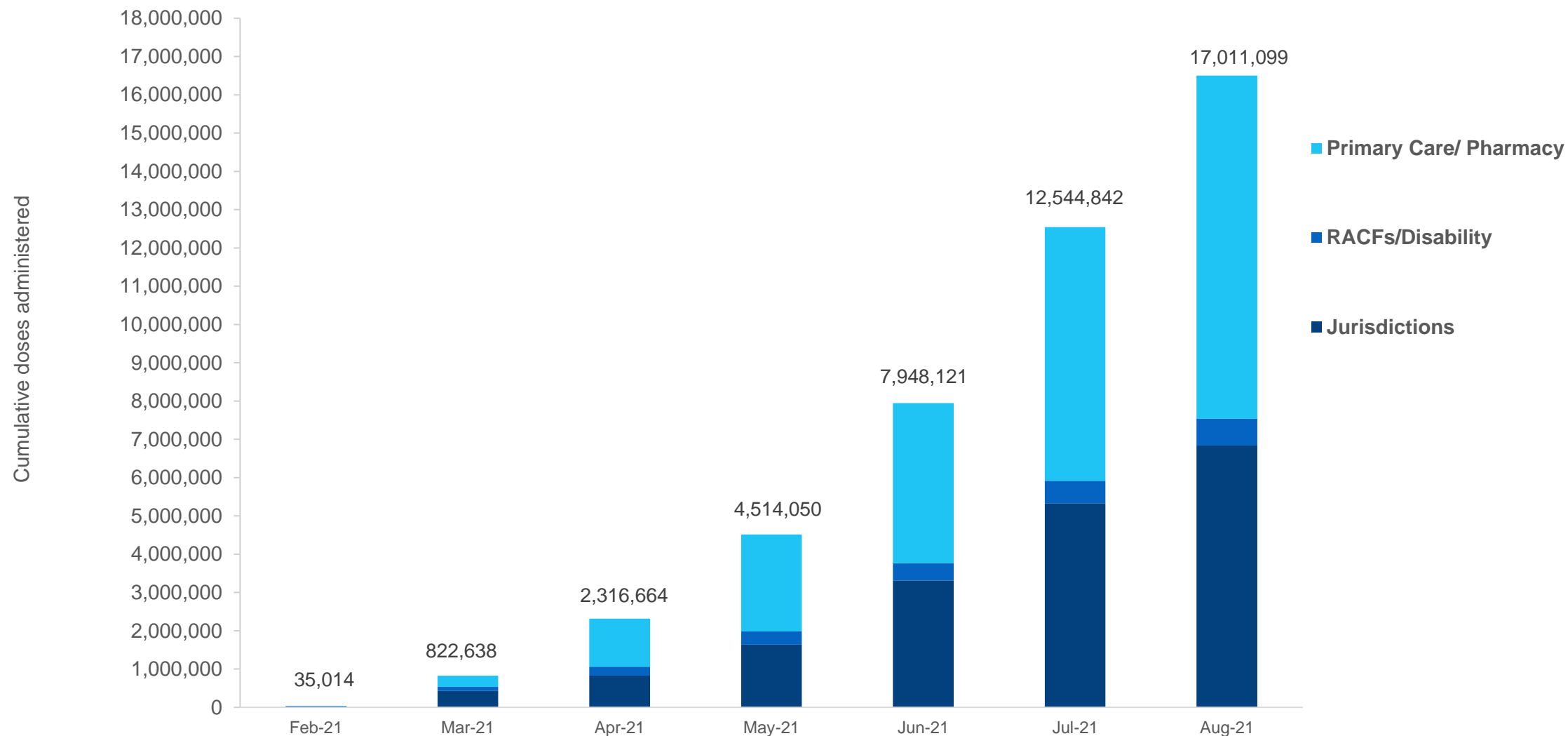
ACT
187,997
(+23 daily increase)

NT
116,469
(+934 daily increase)

*Sourced from the Australian Immunisation Register and self-reported data. Numbers are calculated as difference in daily cumulative reported numbers to allow for historical corrections in all self-reported data sources.

Cumulative doses administered by channel

Data as at:
21 Aug 2021



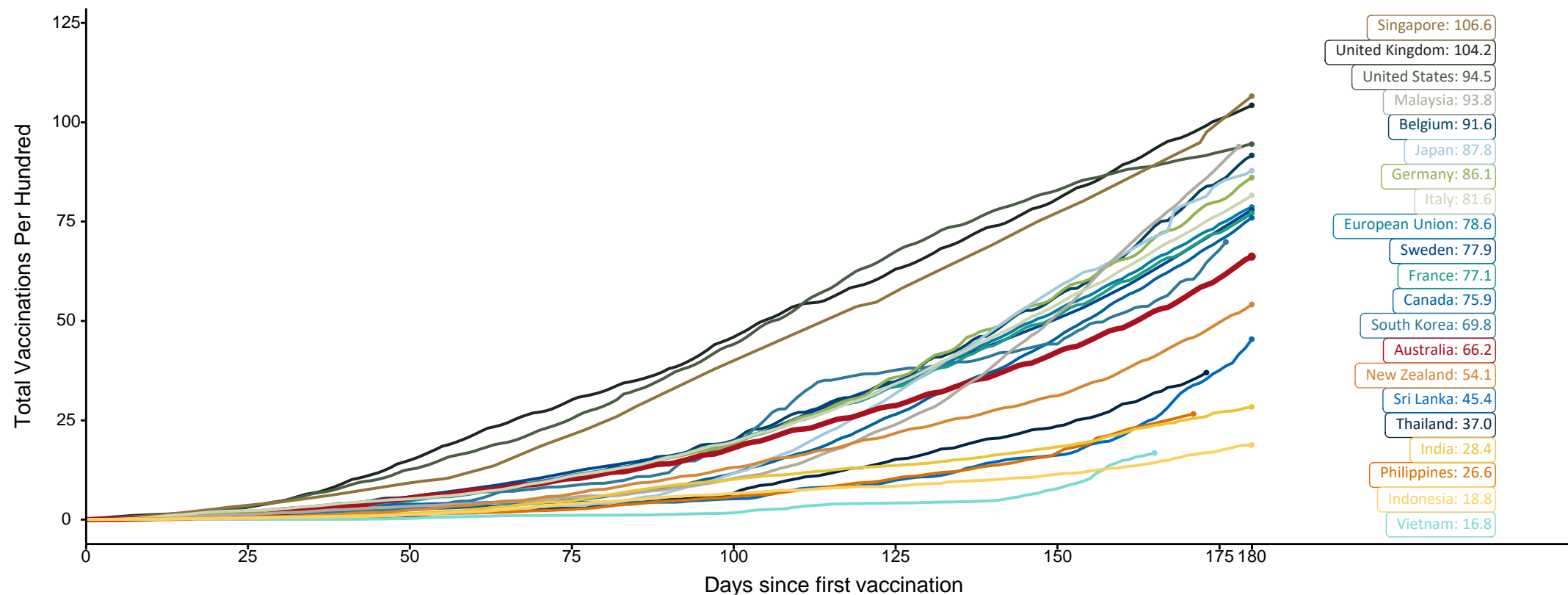
Source: Australian Immunisation Register

Doses at equivalent stages of rollout (Day 180)

Data as at:
21 Aug 2021

The x-axis is truncated at the length of Australia's vaccination program. Countries with intermittent reporting have had their doses per 100 imputed to Australia's current stage of rollout. Israel excluded as it is beyond scale of the graph

Cumulative doses administered (21 Aug): **17,011,099**



Source: Department of Health (Australia), Our World in Data (international)
Latest data: 21 August

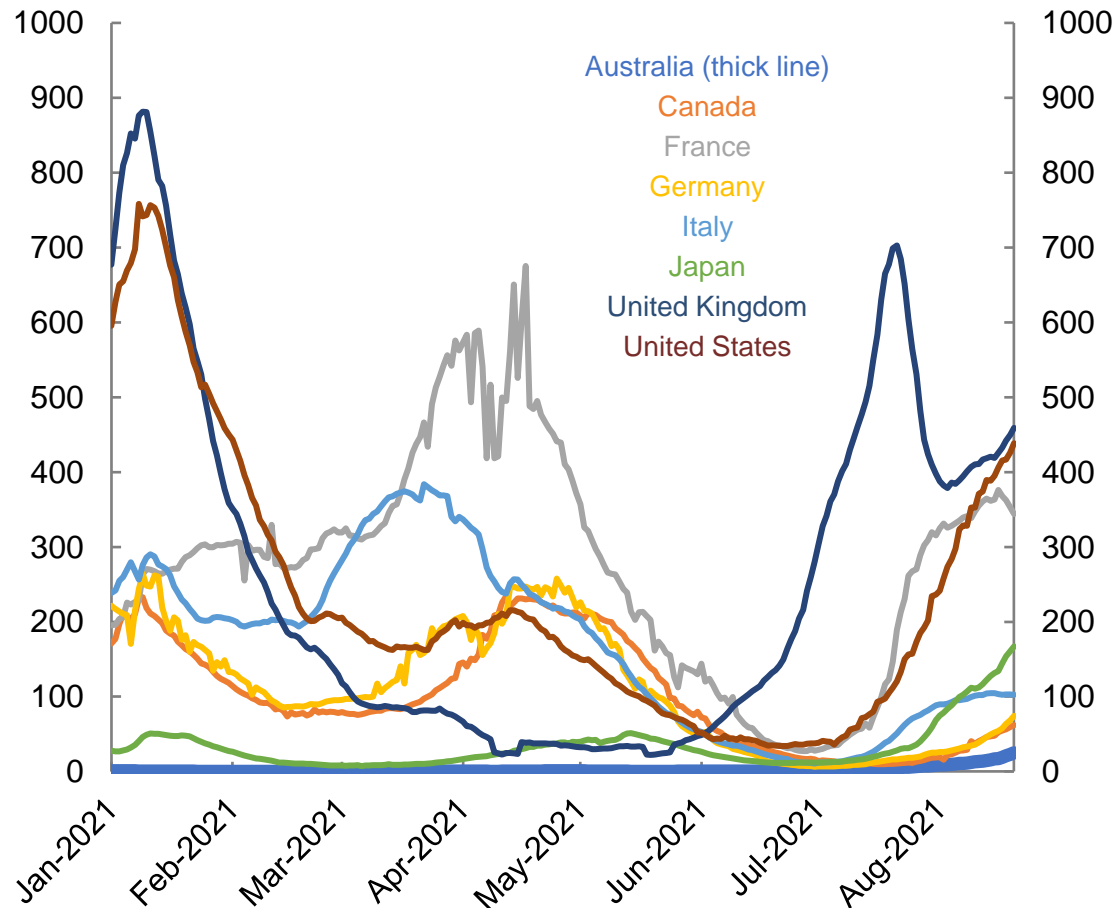
International data – COVID-19

Data as at:
21 Aug 2021

Australia's COVID-19
Vaccine Roadmap

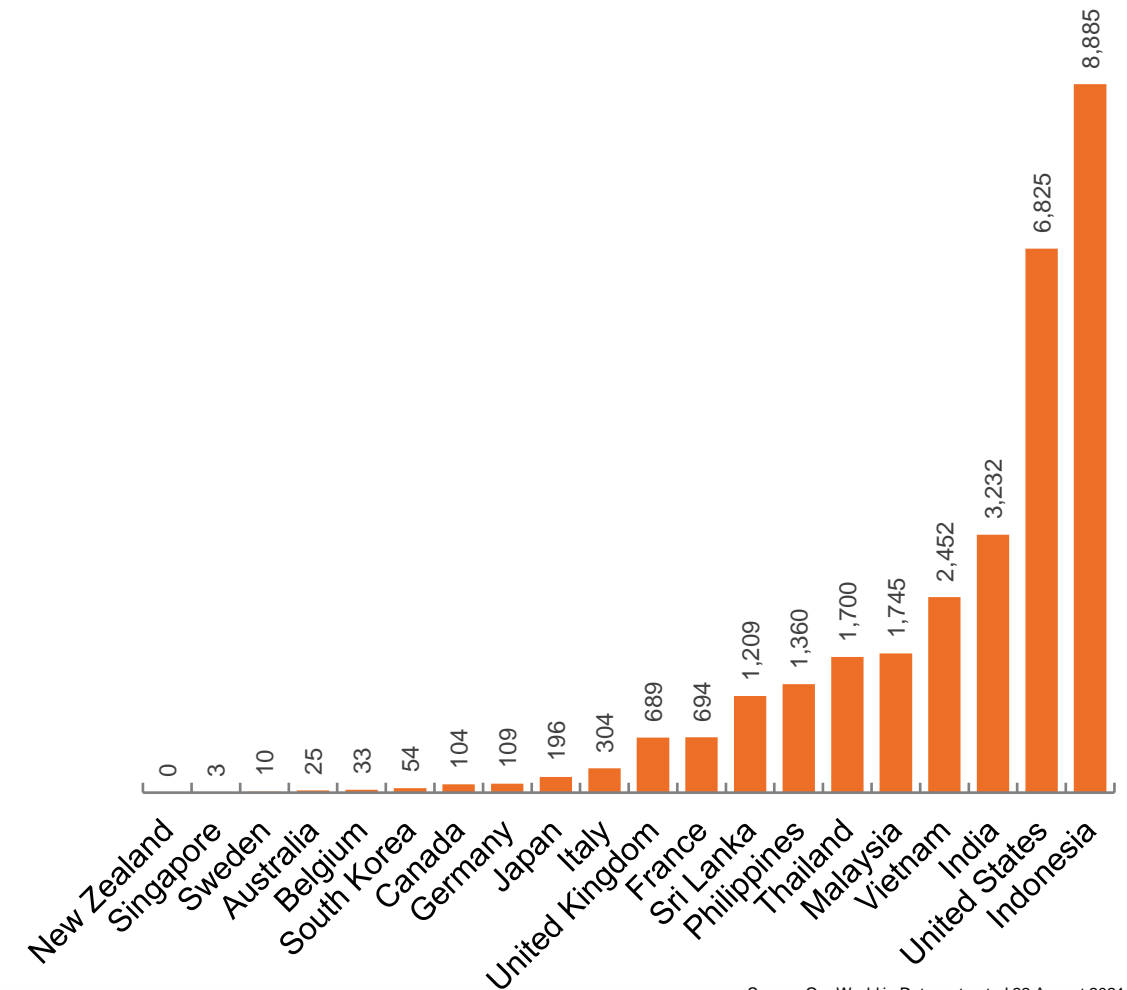
New daily cases per million in 2021, Australia and G7 countries

7 day moving average



Source: Our World in Data, extracted 22 August 2021

COVID-19 deaths in past 7 days - Australia and select countries



Source: Our World in Data, extracted 22 August 2021

Pandemic Response Payments

Australia's COVID-19
Vaccine Roadmap

Data as at midnight:
21 Aug 2021



1.63 million

People have received at least one COVID
Disaster Payment (including ISP200)

\$3.57 billion

Paid Out as at 21 Aug 2021

2.65 million

Claims granted across
three different payments



93%

of Claims
Received Digitally



COVID Disaster Payment:

2.66 million claims received - 1.52 million individuals paid a total of \$3.47 billion.

\$200 Income Support Payment:

128,000 claims received - 107,000 individuals paid a total of \$47.53 million.

Pandemic Leave Disaster Payment:

42,000 claims received - 36,000 individuals paid a total of \$56.77 million.



**THREE
PAYMENTS
AVAILABLE**

COVID Disaster Payment

assisting during a
lockdown event in a
Commonwealth hotspot.

Income Support Payment \$200

for income support
recipients who lost at
least 8 hours of work.

Pandemic Leave Disaster Payment

for those who have to
self-isolate, quarantine
or care.

For more information visit:
servicesaustralia.gov.au

COVID-19 DISASTER PAYMENTS

New South Wales

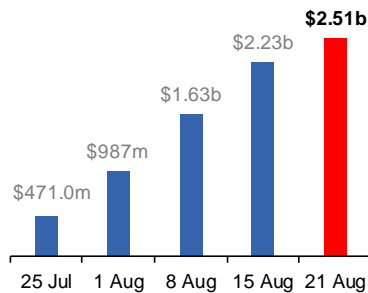
Active lockdown since 24 Jun

**882,000 people have received
at least one COVID Disaster
Payment.**

**\$2.51b paid out as at
21 Aug 2021.**

**\$607m paid in initial and
reoccurring payments in the
week ending 15 Aug 2021.**

Cumulative payments made by State
since activation on 1 Jul 2021.



Victoria

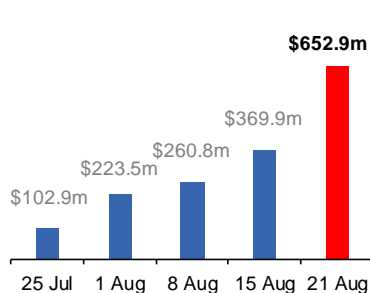
Active lockdown (#6) since 6 Aug

**347,000 people have received
at least one COVID Disaster
Payment.**

**\$652.9m paid out as at
21 Aug 2021.**

**\$109m paid in initial and
reoccurring payments in the
week ending 15 Aug 2021.**

Cumulative payments made by State
since activation on 8 Jun 2021.



Queensland

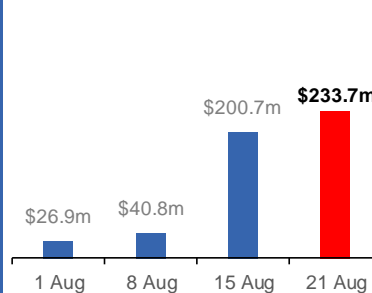
Lockdown from 31 Jul – 11 Aug
Claiming period ends 28 Aug

**180,000 people have received
at least one COVID Disaster
Payment.**

**\$233.7m paid out as at
21 Aug 2021.**

**\$164m paid in initial and
reoccurring payments in the
week ending 15 Aug 2021.**

Cumulative payments made by State
since activation on 7 Aug 2021.



South Australia

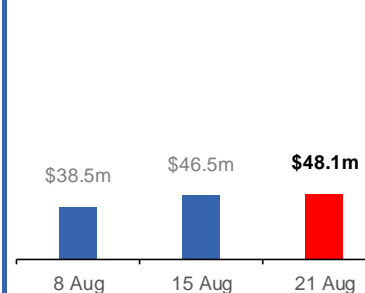
Lockdown from 21 – 27 Jul
Claiming period ends 17 Aug

**86,000 people have received
at least one COVID Disaster
Payment.**

**\$48.1m paid out as at
21 Aug 2021.**

**\$6m paid in initial payments
in the week ending
15 Aug 2021.**

Cumulative payments made by State
since activation on 28 Jul 2021.



Australian Capital Territory

Active lockdown since 12 Aug

**29,000 people have received
at least one COVID Disaster
Payment.**

**\$20.2m paid out as at
21 Aug 2021.**

Cumulative payments made by State
since activation on 20 Aug 2021.

