



Australian Government
Operation COVID Shield

COVID-19 Vaccine Roll-out

21 August 2021

Data as at:
20 Aug 2021

Total vaccine doses



16,815,098 total vaccine
doses administered nationally as at 20 August
+310,524 recorded in the last 24 hours



10,684,738

people have had at least one
dose

51.8%

of people over the age of 16
have had at least one dose



6,103,421

people are fully vaccinated

29.6%

of people over the age of 16 are
fully vaccinated

NSW
5,766,280
(+127,264 daily
increase)

VIC
4,335,571
(+70,698 daily
increase)

QLD
3,070,343
(+51,286 daily
increase)

WA
1,526,517
(+25,568 daily
increase)

TAS
403,462
(+4,511 daily
increase)

SA
1,120,467
(+16,954 daily
increase)

ACT
400,285
(+11,355 daily
increase)

NT
192,173
(+2,888 daily
increase)

*Administration state breakdown indicates state in which a vaccine was administered

**Overall dose count includes instances of more than two doses per person in a small number of cases.

Data as at:
20 Aug 2021

136,799
doses administered to
persons residing in
other territories or with
missing residential
information

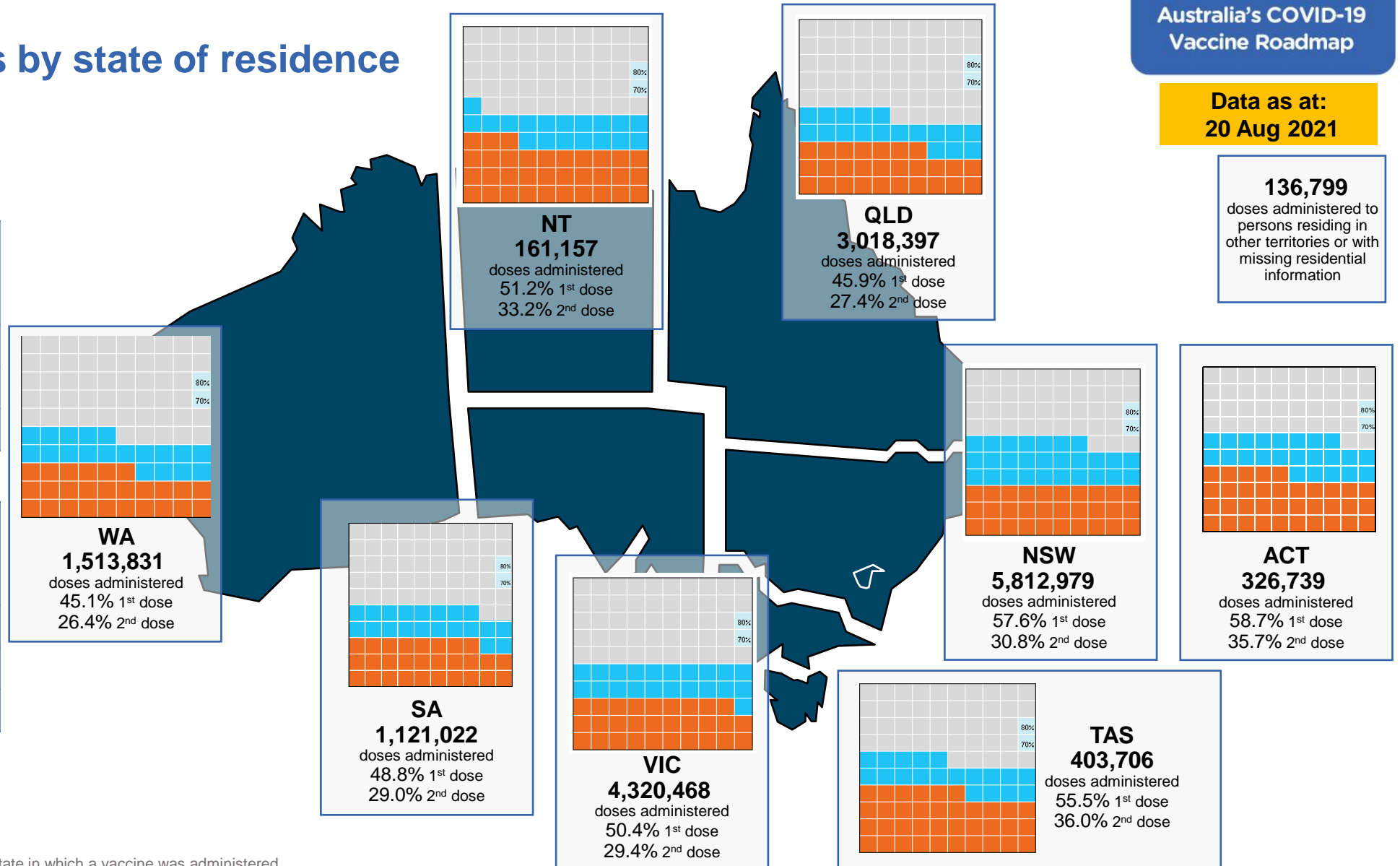
Vaccinations by state of residence

First doses

Age Today	4 weeks ago	8 weeks ago
16+	51.8%	38.1%
50+	74.7%	62.9%
70+	84.9%	77.9%

Fully vaccinated

Age Today	4 weeks ago	8 weeks ago
16+	29.6%	16.3%
50+	43.4%	22.1%
70+	56.6%	36.9%



*Residential state may differ from the state in which a vaccine was administered

Commonwealth and Jurisdiction vaccine doses administered

Data as at:
20 Aug 2021



16,815,098 total vaccine
doses administered nationally as at 20 August

+310,524 recorded in the last 24 hours

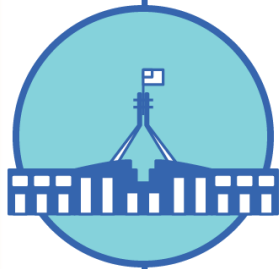


6,963,608

doses administered by state
and territory facilities

+125,072

recorded in the last 24 hours



9,851,490

doses administered by
commonwealth facilities

+185,452

recorded in the last 24 hours

9,150,193 total vaccine doses
administered in primary care settings

701,297 total vaccine doses
administered in aged care and disability
settings

NSW	Jurisdictions	Commonwealth
Cumulative	2,014,110	3,752,170
Daily increase	45,409	81,855

VIC	Jurisdictions	Commonwealth
Cumulative	2,077,395	2,258,176
Daily increase	28,953	41,745

QLD	Jurisdictions	Commonwealth
Cumulative	1,167,094	1,903,249
Daily increase	20,264	31,022

WA	Jurisdictions	Commonwealth
Cumulative	699,207	827,310
Daily increase	13,002	12,566

TAS	Jurisdictions	Commonwealth
Cumulative	213,738	189,724
Daily increase	2,309	2,202

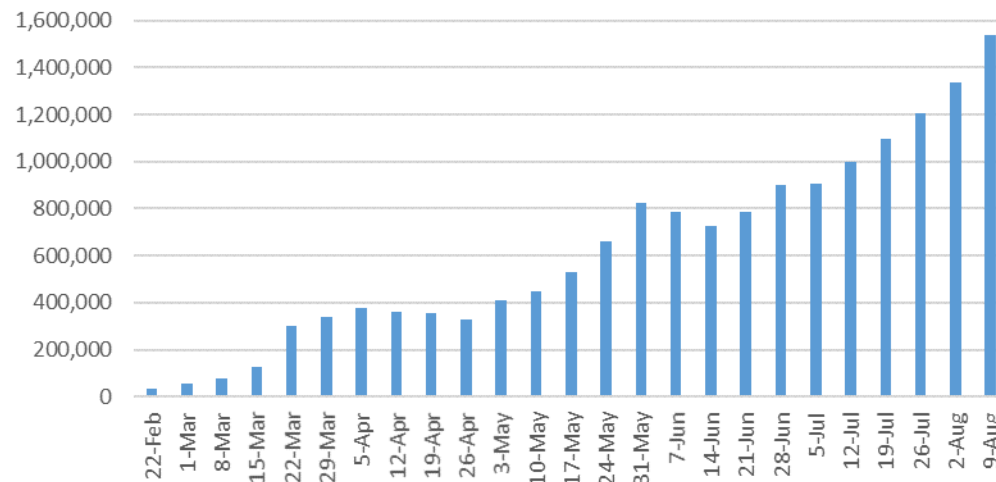
SA	Jurisdictions	Commonwealth
Cumulative	488,555	631,912
Daily increase	6,371	10,583

ACT	Jurisdictions	Commonwealth
Cumulative	187,974	212,311
Daily increase	7,157	4,198

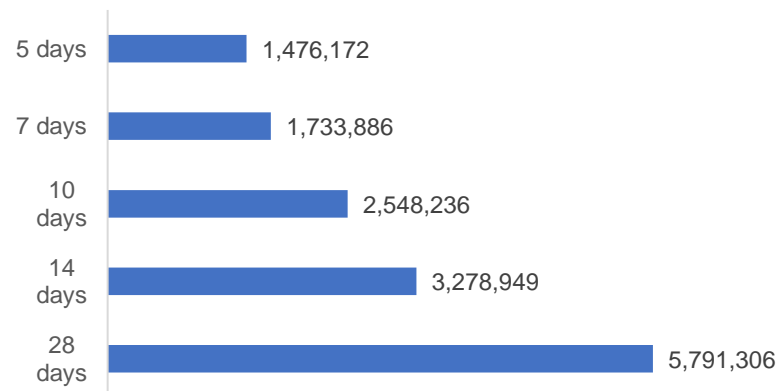
NT	Jurisdictions	Commonwealth
Cumulative	115,535	76,638
Daily increase	1,607	1,281

Vaccine milestone charts

Jabs in arms by week



Doses reported

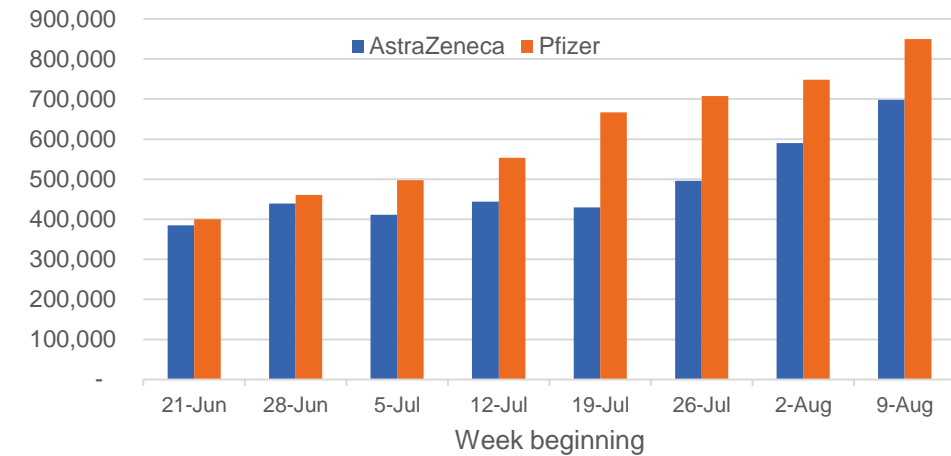


*Sourced from the Australian Immunisation Register. Recent days may be understated.

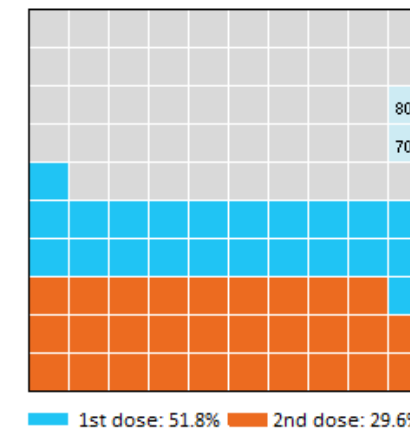
Data as at:
20 Aug 2021

Australia's COVID-19
Vaccine Roadmap

Doses by administration week and vaccine type



Eligible population percentage coverage



*Each square represents 1% of the national population. Squares are filled as milestones are achieved.

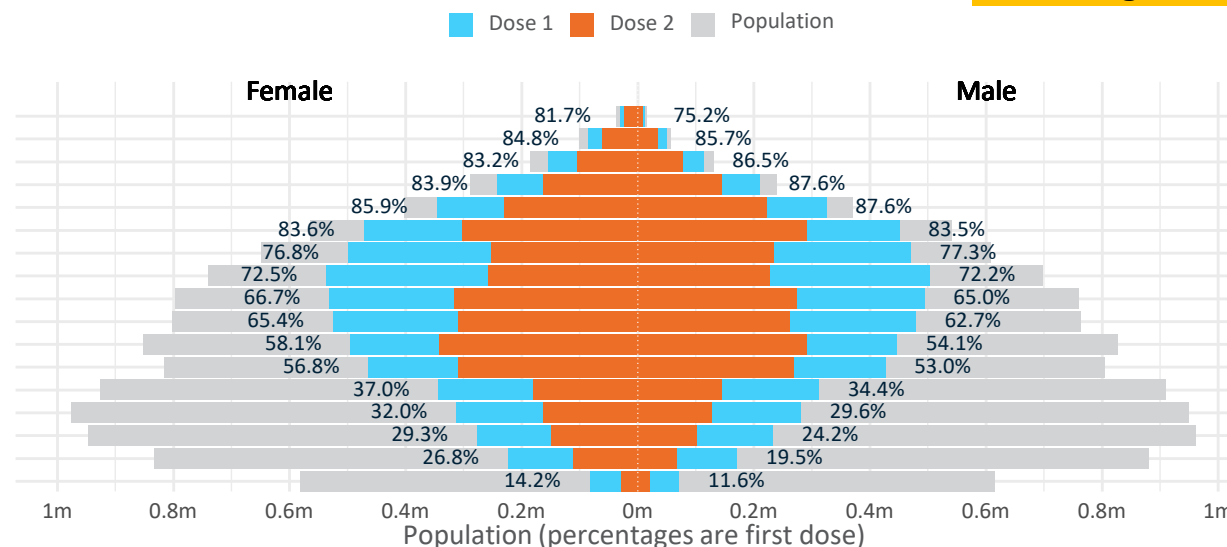
Doses by age and sex

First and second doses by age and sex, using ABS age brackets

Australia's COVID-19
Vaccine Roadmap

Data as at:
20 Aug 2021

Age	Dose 1	Dose 2
95+	42,291 (79.9%)	31,632 (59.8%)
90-94	134,945 (85.2%)	95,727 (60.4%)
85-89	267,541 (84.6%)	181,611 (57.4%)
80-84	452,476 (85.6%)	307,099 (58.1%)
75-79	671,438 (86.8%)	452,048 (58.4%)
70-74	923,742 (83.6%)	594,349 (53.8%)
65-69	970,177 (77.1%)	486,518 (38.7%)
60-64	1,040,200 (72.4%)	485,026 (33.8%)
55-59	1,025,630 (65.9%)	590,154 (37.9%)
50-54	1,003,908 (64.2%)	570,497 (36.5%)
45-49	941,967 (56.2%)	633,747 (37.8%)
40-44	891,103 (55.0%)	578,080 (35.7%)
35-39	656,910 (35.8%)	324,667 (17.7%)
30-34	596,852 (31.0%)	291,999 (15.2%)
25-29	514,125 (27.0%)	251,652 (13.2%)
20-24	397,078 (23.2%)	179,283 (10.5%)
16-19	154,355 (12.9%)	49,332 (4.1%)



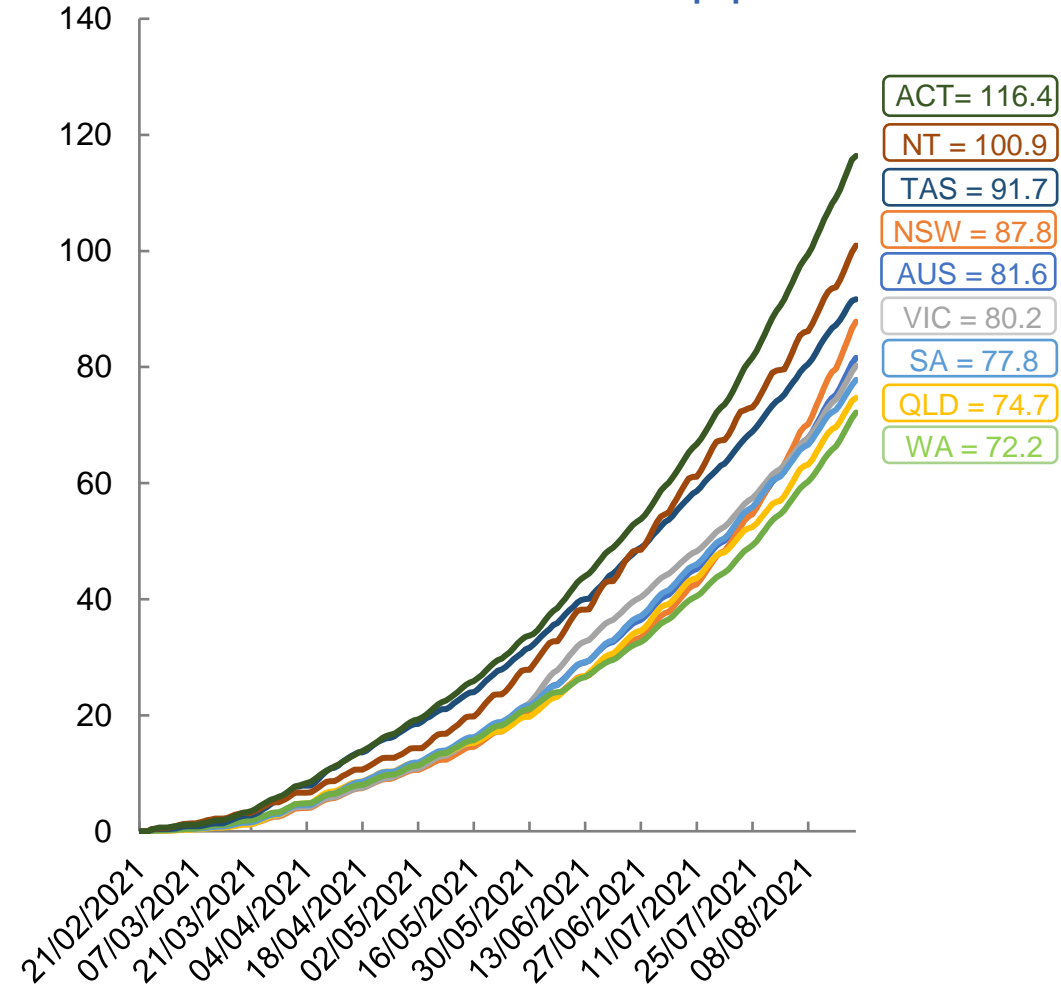
	AUS	ACT	NSW	NT	QLD	SA	TAS	VIC	WA
16 and over - dose 1	10,684,738	202,117	3,779,127	97,499	1,887,055	702,665	244,333	2,726,850	954,557
16 and over - dose 2	6,103,421	122,835	2,022,928	63,337	1,126,894	417,196	158,359	1,588,286	557,506
16 and over - population	20,619,959*	344,037	6,565,651	190,571	4,112,707	1,440,400	440,172	5,407,574	2,114,978
16 and over % with dose 1	51.82%	58.75%	57.56%	51.16%	45.88%	48.78%	55.51%	50.43%	45.13%
16 and over % with dose 2	29.60%	35.70%	30.81%	33.24%	27.40%	28.96%	35.98%	29.37%	26.36%
50 and over - dose 1	6,532,348	113,539	2,172,094	41,325	1,238,258	477,741	167,184	1,670,076	611,822
50 and over - dose 2	3,794,661	68,333	1,271,596	26,348	737,762	264,358	104,789	937,541	362,226
50 and over - population	8,749,703	127,802	2,807,793	62,280	1,758,855	674,384	220,036	2,211,211	885,370
50 and over % with dose 1	74.66%	88.84%	77.36%	66.35%	70.40%	70.84%	75.98%	75.53%	69.10%
50 and over % with dose 2	43.37%	53.47%	45.29%	42.31%	41.95%	39.20%	47.62%	42.40%	40.91%
70 and over - dose 1	2,492,433	38,781	834,780	9,276	483,243	197,558	66,784	617,383	226,388
70 and over - dose 2	1,662,466	27,948	553,314	6,646	330,733	124,586	47,624	406,320	153,122
70 and over - population	2,934,706	39,946	962,606	12,343	577,767	240,514	77,155	743,519	280,281
70 and over % with dose 1	84.93%	97.08%	86.72%	75.15%	83.64%	82.14%	86.56%	83.04%	80.77%
70 and over % with dose 2	56.65%	69.96%	57.48%	53.84%	57.24%	51.80%	61.73%	54.65%	54.63%

*National population will not equal sum of listed jurisdictions due to a small number of people counted in national population residing in some 'other' territories

Doses sourced from Australian Immunisation Register, population from ABS ERP June 2020

Vaccinations by location

Cumulative total doses administered vs state populations*

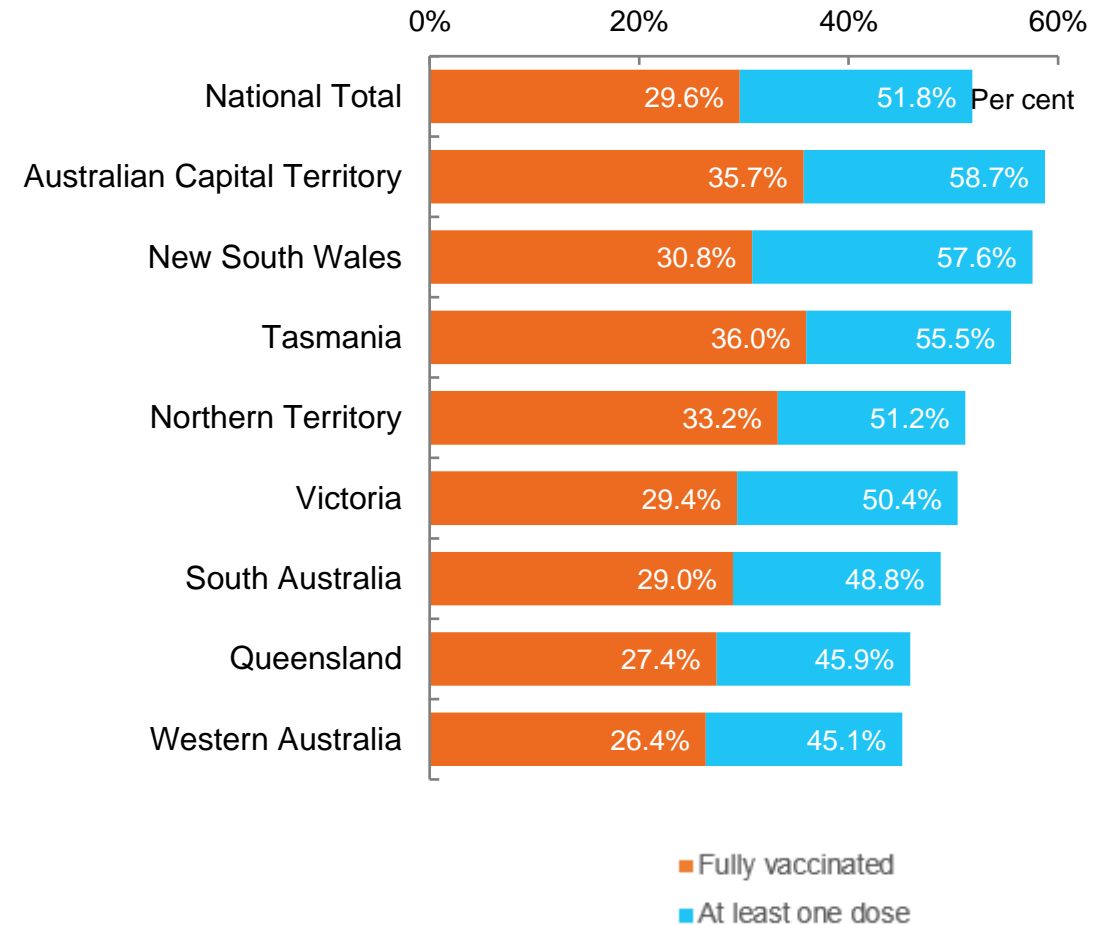


*Not an indication of percentage vaccinated, numbers will exceed 100 due to multiple doses required per person of the population

Data as at:
20 Aug 2021

Australia's COVID-19
Vaccine Roadmap

First and Second Doses by state of residence

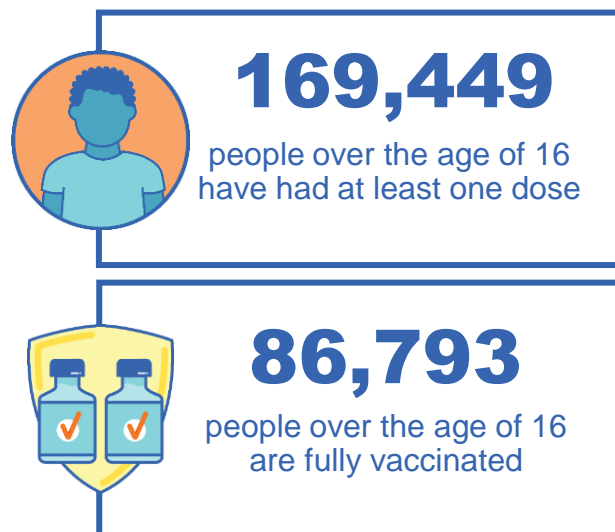


Aboriginal and Torres Strait Islander peoples

Number of people vaccinated

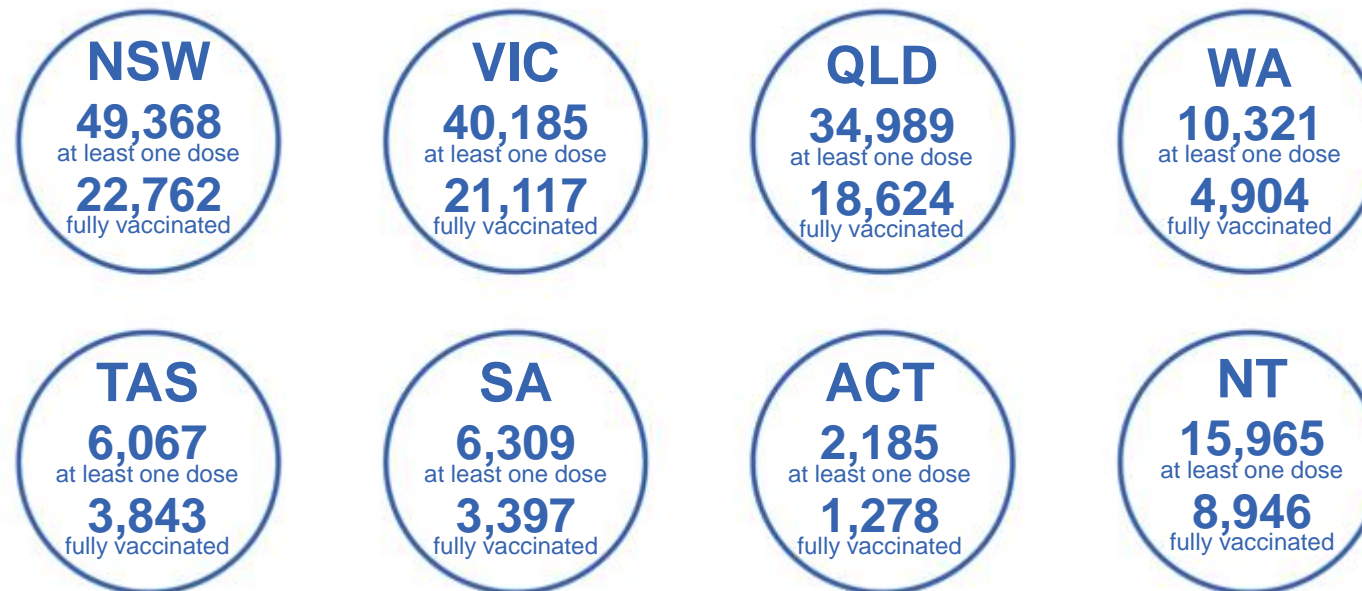
Data as at:
15 Aug 2021
Updated weekly

Australia's COVID-19
Vaccine Roadmap



160 Aboriginal community controlled health services (ACCHS)

0#	45	24	38	11	3	21	18
ACT	NSW	NT	QLD	SA	TAS	VIC	WA



4,060 people with at least one dose
1,922 people fully vaccinated

residing in other territories or with missing residential information
Source: Australian Immunisation Register

*Identifying as Aboriginal and Torres Strait Islander is optional and the estimated population may be under reported.

**Includes all Aboriginal and Torres Strait Islander peoples who have received a vaccination, not limited to those administered in an ACCHS setting

***Updated weekly

#ACCHS in the ACT are currently operating as a Commonwealth Vaccine Clinics so not included to avoid double counting

Data as at:
20 Aug 2021

Commonwealth primary care



Primary care vaccine administration sites

5,250	136	160	2,479
GPs	CVCs	ACCHS	Pharmacies



9,150,193 total vaccine doses administered primary care settings as at 20 August
+177,355 recorded in the last 24 hours

Primary care vaccinations by provider type

	Doses administered	Daily increase	7 day increase
General Practice* includes other Commonwealth	8,970,912	158,486	907,635
Pharmacy	179,281	18,869	94,664



46,012 doses administered to persons residing in other territories or with missing residential information

*General practice includes Commonwealth Vaccination Clinics, Aboriginal Community Health Centres, Royal Flying Doctor Service and other Commonwealth vaccination facilities

Source: Australian Immunisation Register

Data as at:
20 Aug 2021

Commonwealth aged care and disability doses administered



People vaccinated in aged care
and residential disability facilities

411,971

People with a first dose

288,298

People fully vaccinated

Residential aged care
facilities

2,569

Sites visited for first doses

2,568

Sites visited for second doses



701,297

(+8,097 last 24 hours)

Total vaccine doses administered in aged care
and disability facilities as at 20 August

Number of doses administered as part of the Commonwealth aged and disability care rollout

NSW
307,153

(+4,747 last
24 hours)

VIC
142,556

(+1,052 last
24 hours)

QLD
105,866

(+1,075 last
24 hours)

WA
51,201

(+351 last
24 hours)

TAS
14,768

(+107 last
24 hours)

SA
46,594

(+407 last
24 hours)

ACT
8,582

(+143 last
24 hours)

NT
4,826

(+143 last
24 hours)

19,751

doses administered to persons
residing in other territories or with
missing residential information

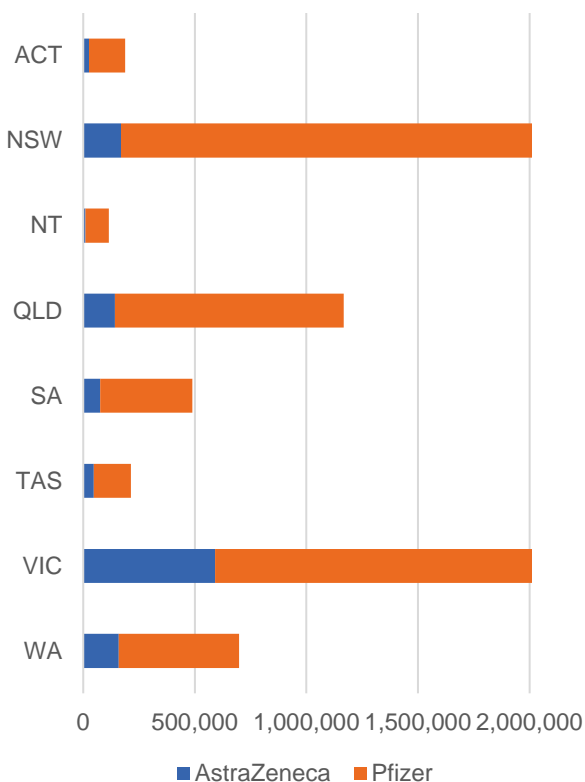
*Sourced from the Australian Immunisation Register. Includes all persons vaccinated at participating residential aged care, disability and related industry settings.

**State level breakdown indicates the residential location and may not align to the state in which the vaccination occurred.

Data as at:
20 Aug 2021

Jurisdiction administered

Total vaccine doses administered in State and Territory clinics as at 20 August



6,963,608 total vaccine doses administered
in State and Territory clinics as at 20 August
+125,072 recorded in the last 24 hours
+684,961 recorded in the last 7 days

NSW
2,014,110
(+45,409 daily increase)

VIC
2,077,395
(+28,953 daily increase)

QLD
1,167,094
(+20,264 daily increase)

WA
699,207
(+13,002 daily increase)

TAS
213,738
(+2,309 daily increase)

SA
488,555
(+6,371 daily increase)

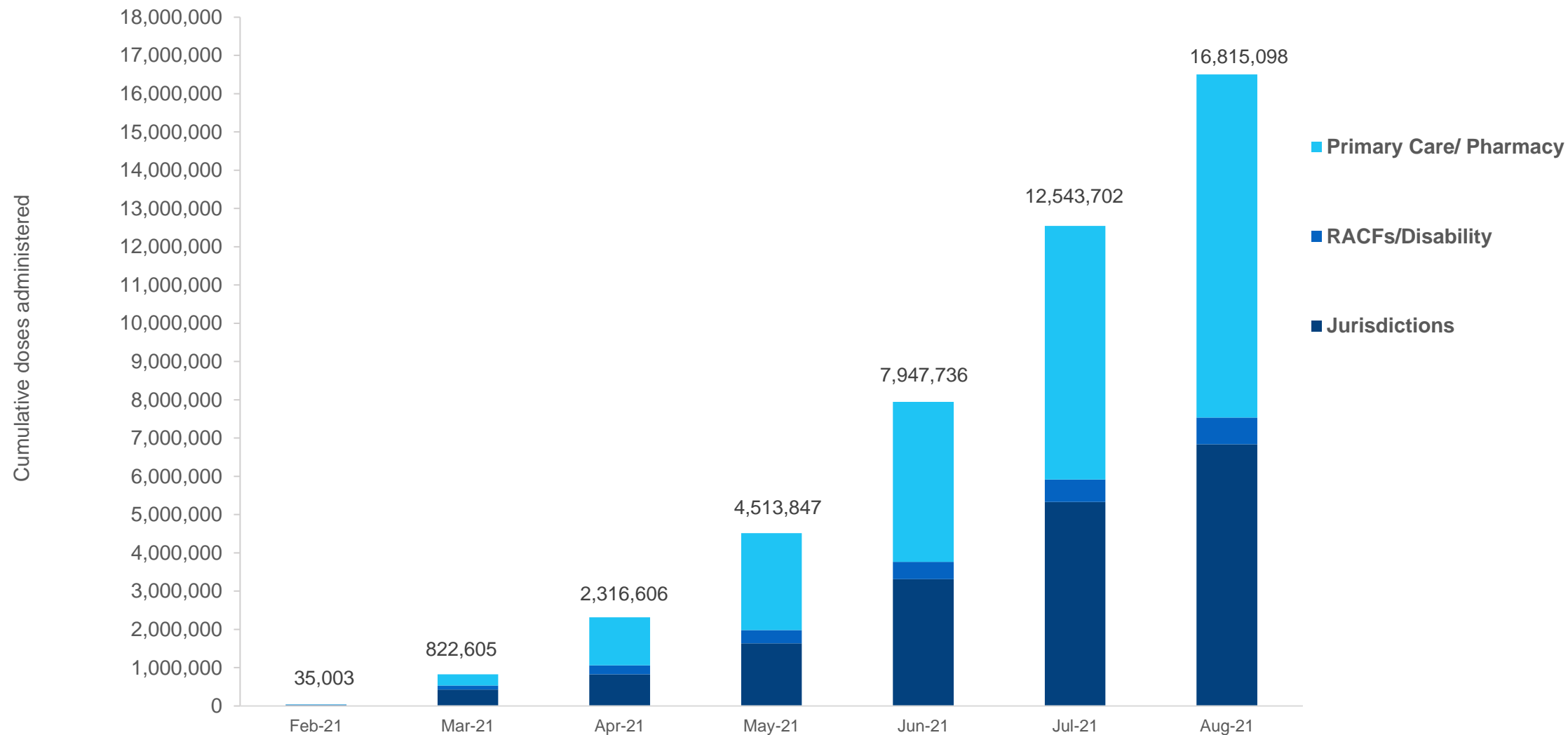
ACT
187,974
(+7,157 daily increase)

NT
115,535
(+1,607 daily increase)

*Sourced from the Australian Immunisation Register and self-reported data. Numbers are calculated as difference in daily cumulative reported numbers to allow for historical corrections in all self-reported data sources.

Cumulative doses administered by channel

Data as at:
20 Aug 2021



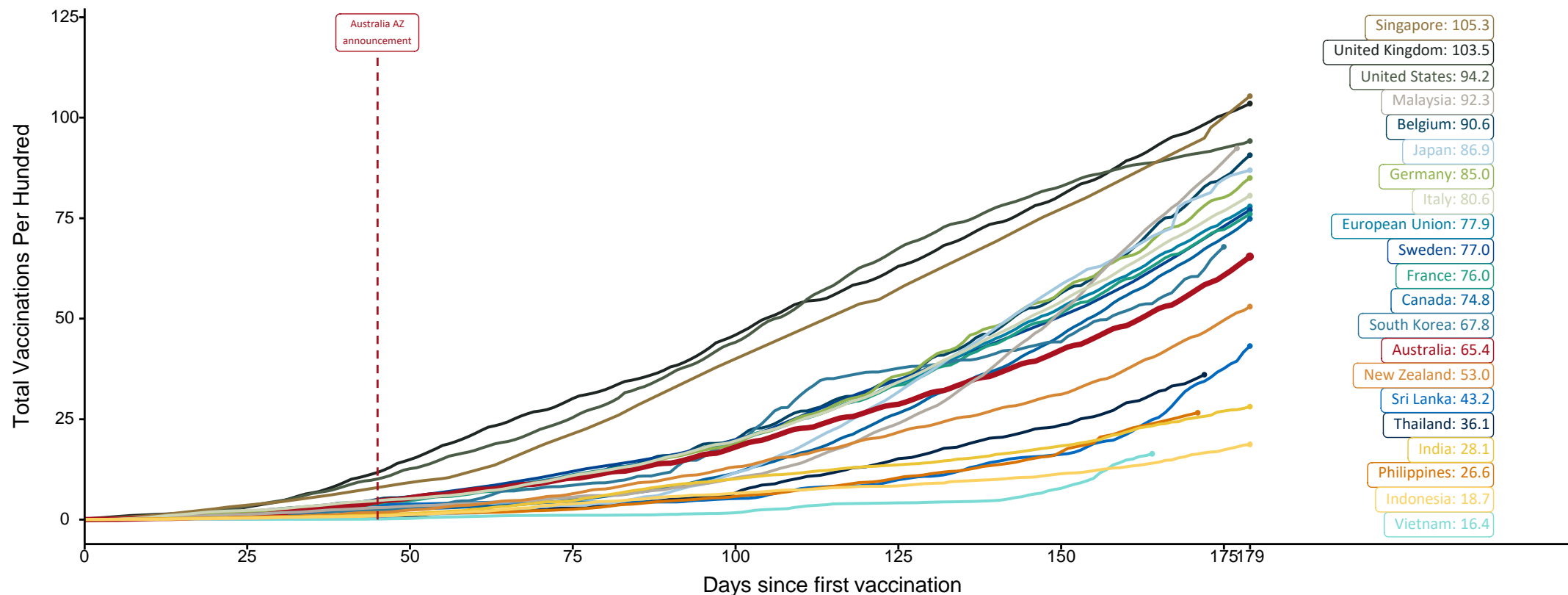
Source: Australian Immunisation Register

Doses at equivalent stages of rollout (Day 179)

Data as at:
20 Aug 2021

The x-axis is truncated at the length of Australia's vaccination program. Countries with intermittent reporting have had their doses per 100 imputed to Australia's current stage of rollout. Israel excluded as it is beyond scale of the graph.

Cumulative doses administered (20 Aug): **16,815,098**



Source: Department of Health (Australia), Our World in Data (international)
Latest data: 20 August

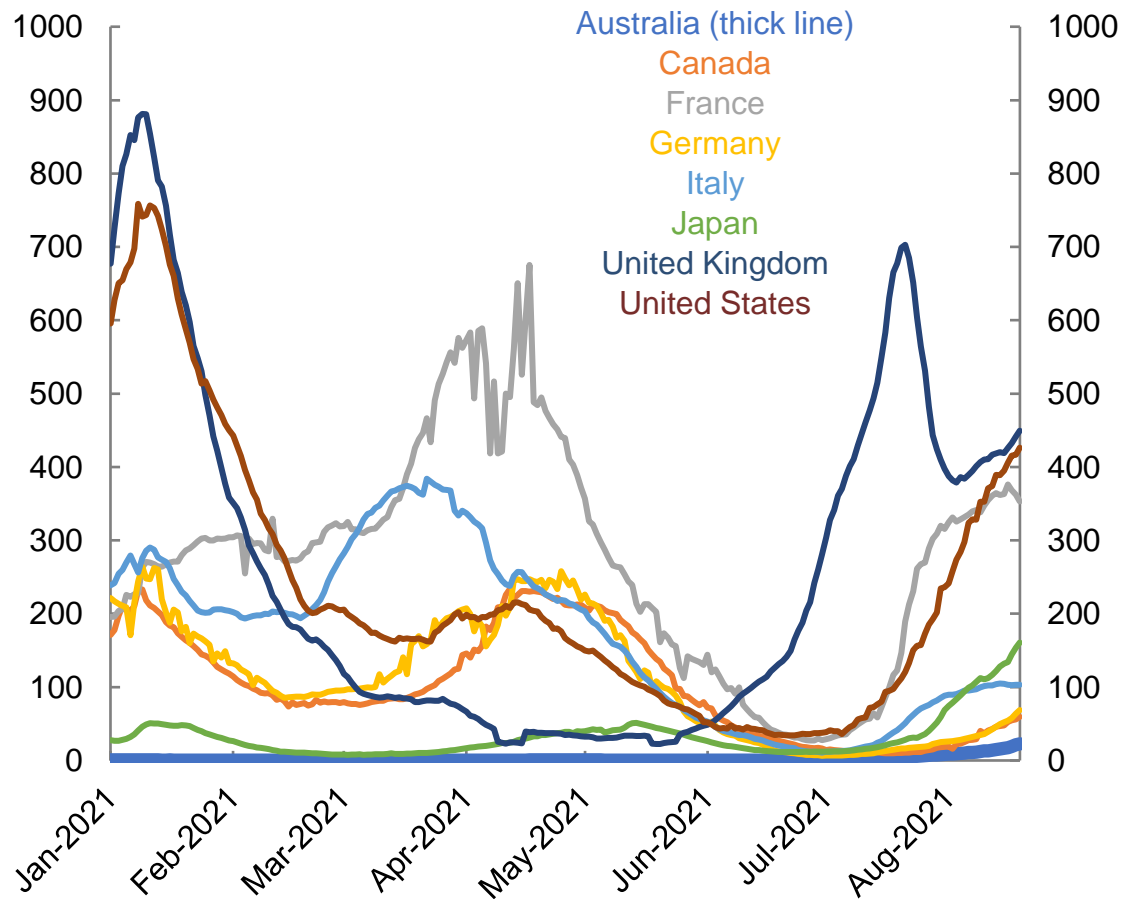
International data – COVID-19

Data as at:
20 Aug 2021

Australia's COVID-19
Vaccine Roadmap

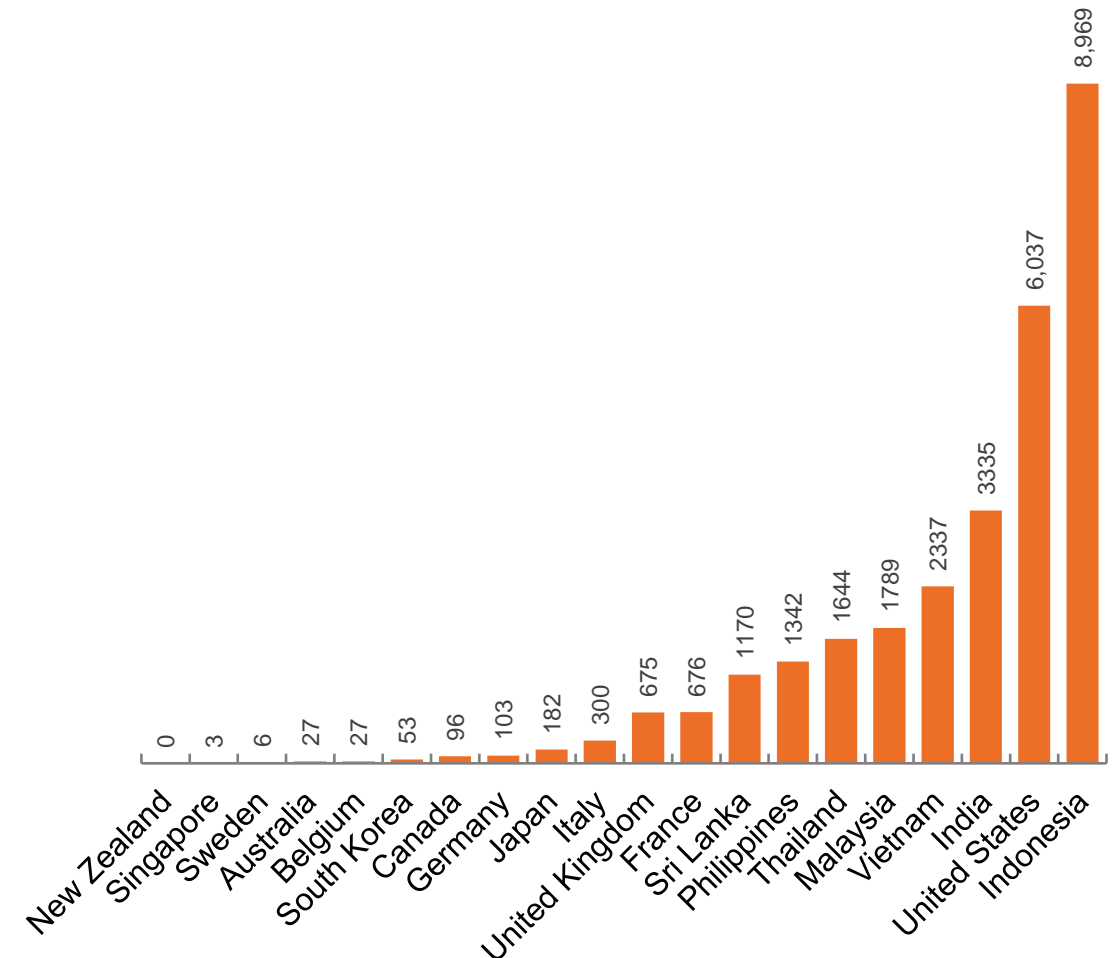
New daily cases per million in 2021, Australia and G7 countries

7 day moving average



Source: Our World in Data, extracted 21 August 2021

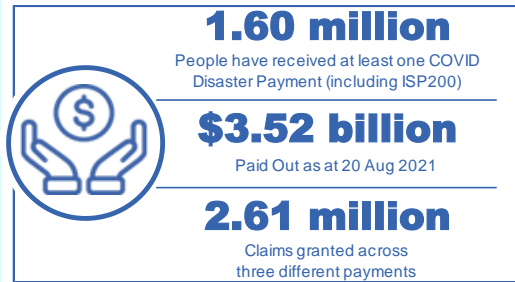
COVID-19 deaths in past 7 days - Australia and select countries



Source: Our World in Data, extracted 21 August 2021

Data as at midnight:
20 Aug 2021

Pandemic Response Payments



COVID Disaster Payment:	2.64 million claims received - 1.49 million individuals paid a total of \$3.42 billion.
\$200 Income Support Payment:	125,000 claims received - 105,000 individuals paid a total of \$46.39 million.
Pandemic Leave Disaster Payment:	42,000 claims received - 36,000 individuals paid a total of \$56.72 million.



COVID Disaster Payment
assisting during a lockdown event in a Commonwealth hotspot.

Income Support Payment \$200
for income support recipients who lost at least 8 hours of work.

Pandemic Leave Disaster Payment
for those who have to self-isolate, quarantine or care.

For more information visit:
servicesaustralia.gov.au

COVID-19 DISASTER PAYMENTS

New South Wales

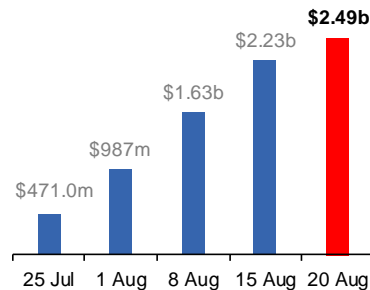
Active lockdown since 24 Jun

874,000 people have received at least one COVID Disaster Payment.

\$2.49b paid out as at 20 Aug 2021.

\$607m paid in initial and reoccurring payments in the week ending 15 Aug 2021.

Cumulative payments made by State since activation on 1 Jul 2021.



Victoria

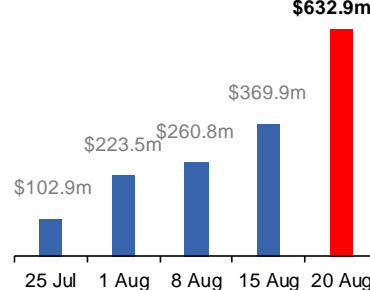
Active lockdown (#6) since 6 Aug

339,000 people have received at least one COVID Disaster Payment.

\$632.9m paid out as at 20 Aug 2021.

\$109m paid in initial and reoccurring payments in the week ending 15 Aug 2021.

Cumulative payments made by State since activation on 8 Jun 2021.



Queensland

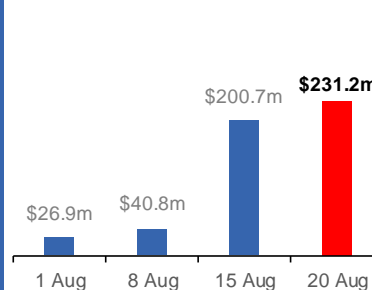
Lockdown from 31 Jul – 11 Aug
Claiming period ends 28 Aug

178,000 people have received at least one COVID Disaster Payment.

\$231.2m paid out as at 20 Aug 2021.

\$164m paid in initial and reoccurring payments in the week ending 15 Aug 2021.

Cumulative payments made by State since activation on 7 Aug 2021.



South Australia

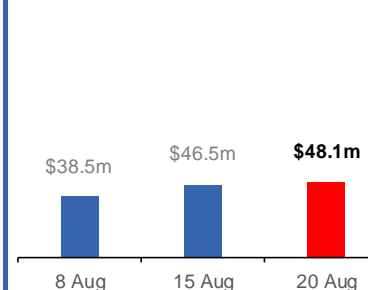
Lockdown from 21 – 27 Jul
Claiming period ends 17 Aug

86,000 people have received at least one COVID Disaster Payment.

\$48.1m paid out as at 20 Aug 2021.

\$6m paid in initial payments in the week ending 15 Aug 2021.

Cumulative payments made by State since activation on 28 Jul 2021.



Australian Capital Territory

Active lockdown since 12 Aug

20,000 people have received at least one COVID Disaster Payment.

\$13.7m paid out as at 20 Aug 2021.

Cumulative payments made by State since activation on 20 Aug 2021.

