



Australian Government
Operation COVID Shield

COVID-19 Vaccine Roll-out

20 August 2021

Data as at:
19 Aug 2021

Total vaccine doses



16,504,574 total vaccine
doses administered nationally as at 19 August
+303,304 recorded in the last 24 hours



10,519,590

people have had at least one
dose

51.0%

of people over the age of 16
have had at least one dose



5,958,723

people are fully vaccinated

28.9%

of people over the age of 16 are
fully vaccinated

NSW
5,639,016
(+120,581 daily
increase)

VIC
4,264,873
(+70,648 daily
increase)

QLD
3,019,057
(+47,215 daily
increase)

WA
1,500,949
(+28,504 daily
increase)

TAS
398,951
(+5,799 daily
increase)

SA
1,103,513
(+16,366 daily
increase)

ACT
388,930
(+10,813 daily
increase)

NT
189,285
(+3,378 daily
increase)

*Administration state breakdown indicates state in which a vaccine was administered

**Overall dose count includes instances of more than two doses per person in a small number of cases.

Source: Australian Immunisation Register

Data as at:
19 Aug 2021

134,449
doses administered to
persons residing in
other territories or with
missing residential
information

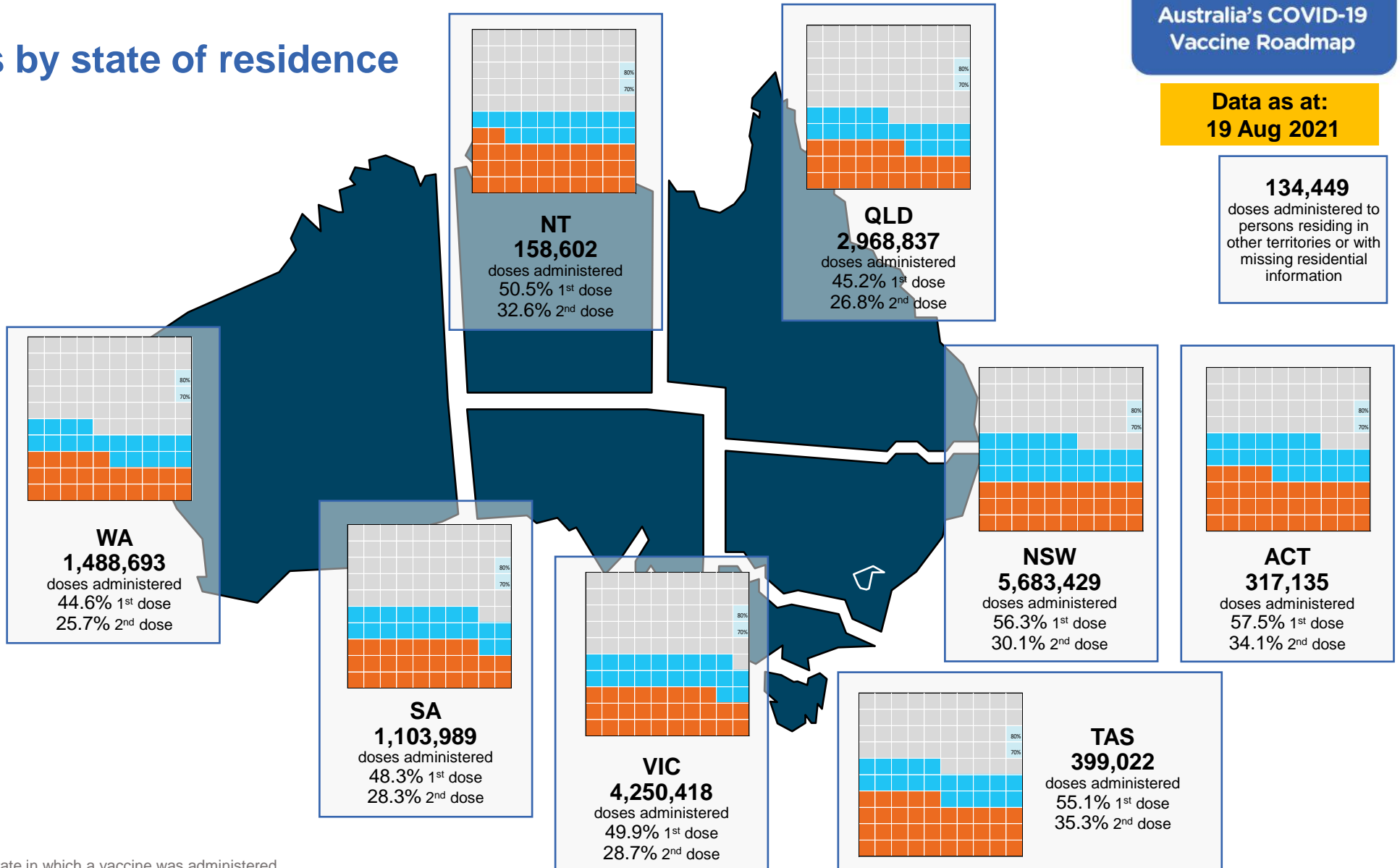
Vaccinations by state of residence

First doses

Age Today	4 weeks ago	8 weeks ago
16+	51.0%	37.6%
50+	74.1%	62.3%
70+	84.6%	77.6%

Fully vaccinated

Age Today	4 weeks ago	8 weeks ago
16+	28.9%	15.8%
50+	42.3%	21.4%
70+	55.8%	36.0%



*Residential state may differ from the state in which a vaccine was administered

Commonwealth and Jurisdiction vaccine doses administered

Data as at:
19 Aug 2021



16,504,574 total vaccine
doses administered nationally as at 19 August

+303,304 recorded in the last 24 hours

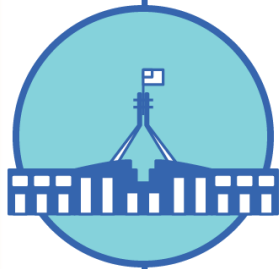


6,838,536

doses administered by state
and territory facilities

+114,011

recorded in the last 24 hours



9,666,038

doses administered by
commonwealth facilities

+189,293

recorded in the last 24 hours

8,972,838 total vaccine doses
administered in primary care settings

693,200 total vaccine doses
administered in aged care and disability
settings

NSW	Jurisdictions	Commonwealth
Cumulative	1,968,701	3,670,315
Daily increase	35,154	85,427

VIC	Jurisdictions	Commonwealth
Cumulative	2,048,442	2,216,431
Daily increase	27,884	42,764

QLD	Jurisdictions	Commonwealth
Cumulative	1,146,830	1,872,227
Daily increase	16,541	30,674

WA	Jurisdictions	Commonwealth
Cumulative	686,205	814,744
Daily increase	15,472	13,032

TAS	Jurisdictions	Commonwealth
Cumulative	211,429	187,522
Daily increase	3,341	2,458

SA	Jurisdictions	Commonwealth
Cumulative	482,184	621,329
Daily increase	6,584	9,782

ACT	Jurisdictions	Commonwealth
Cumulative	180,817	208,113
Daily increase	7,106	3,707

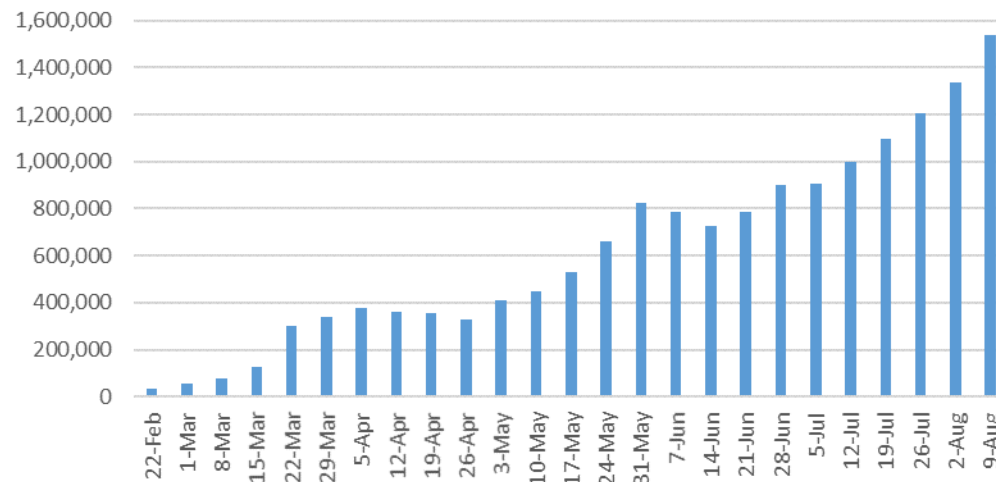
NT	Jurisdictions	Commonwealth
Cumulative	113,928	75,357
Daily increase	1,929	1,449

Vaccine milestone charts

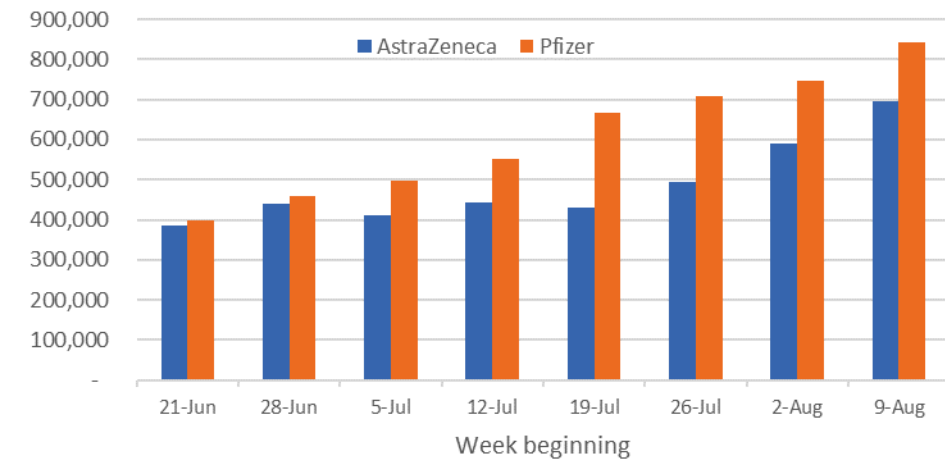
Data as at:
19 Aug 2021

Australia's COVID-19
Vaccine Roadmap

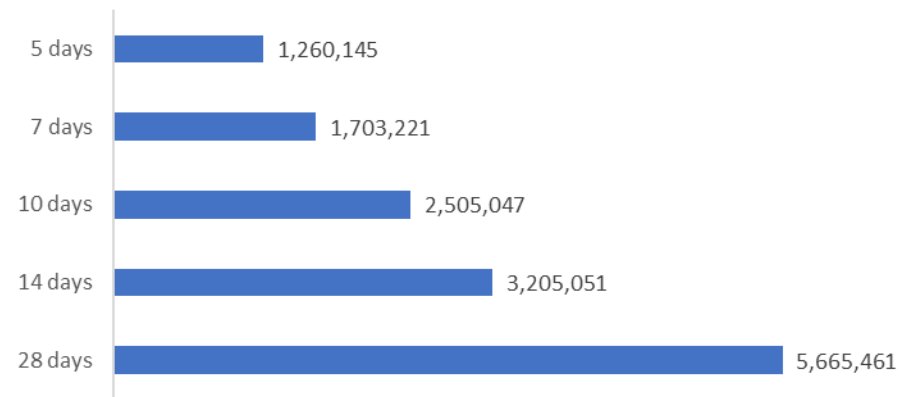
Jabs in arms by week



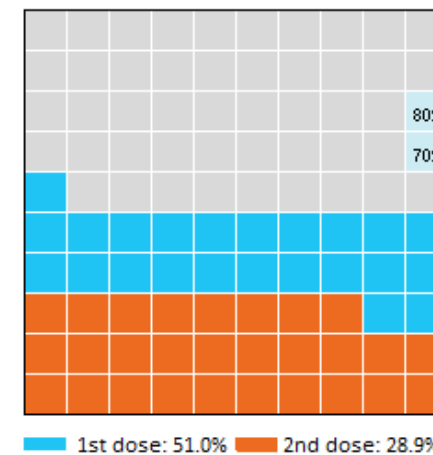
Doses by administration week and vaccine type



Doses reported



Eligible population percentage coverage



*Sourced from the Australian Immunisation Register. Recent days may be understated.

*Each square represents 1% of the national population. Squares are filled as milestones are achieved.

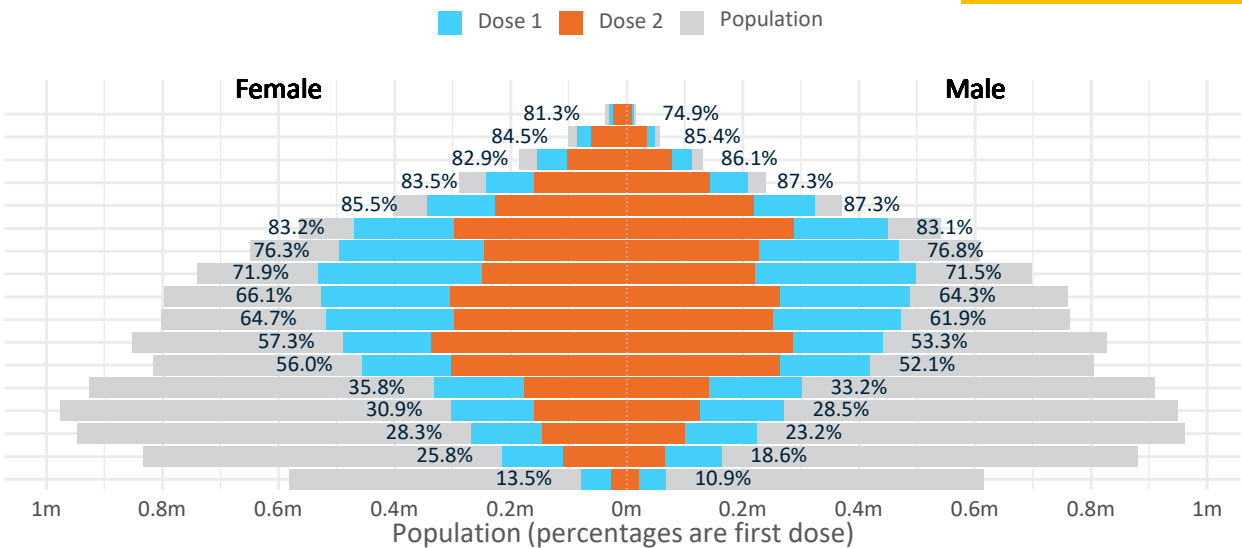
Data as at:
19 Aug 2021

Doses by age and sex

First and second doses by age and sex, using ABS age brackets

Age	Dose 1	Dose 2
95+	42,100 (79.6%)	31,388 (59.3%)
90-94	134,477 (84.9%)	94,776 (59.8%)
85-89	266,541 (84.3%)	179,300 (56.7%)
80-84	450,766 (85.3%)	302,897 (57.3%)
75-79	668,792 (86.4%)	445,457 (57.6%)
70-74	919,893 (83.2%)	584,461 (52.9%)
65-69	964,224 (76.6%)	471,606 (37.5%)
60-64	1,031,415 (71.8%)	468,957 (32.6%)
55-59	1,014,715 (65.2%)	569,181 (36.6%)
50-54	991,256 (63.4%)	549,702 (35.1%)
45-49	928,162 (55.4%)	621,670 (37.1%)
40-44	876,256 (54.1%)	565,993 (34.9%)
35-39	634,746 (34.6%)	317,394 (17.3%)
30-34	575,305 (29.9%)	285,820 (14.9%)
25-29	495,015 (26.0%)	246,857 (12.9%)
20-24	380,378 (22.2%)	175,475 (10.2%)
16-19	145,549 (12.2%)	47,789 (4.0%)

AUS	16+	50+	70+
Dose 1	51.02% (10,519,590 doses / 20,619,959 people)	74.11% (6,484,179 doses / 8,749,703 people)	84.59% (2,482,569 doses / 2,934,706 people)
Dose 2	28.90% (5,958,723 doses / 20,619,959 people)	42.26% (3,697,725 doses / 8,749,703 people)	55.82% (1,638,279 doses / 2,934,706 people)



DOH (Australian Immunisation Register), ABS (Population)

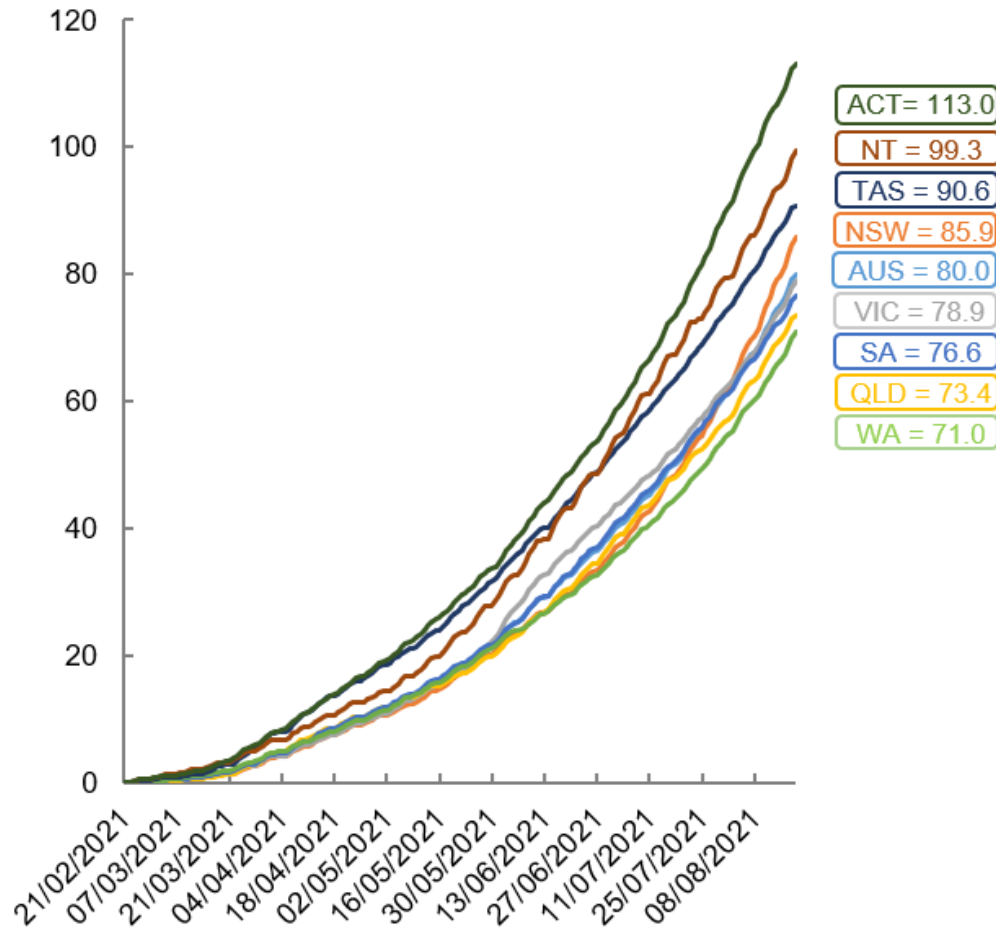
	AUS	ACT	NSW	NT	QLD	SA	TAS	VIC	WA
16 and over - dose 1	10,519,590	197,963	3,699,581	96,208	1,860,669	695,320	242,440	2,695,760	942,781
16 and over - dose 2	5,958,723	117,405	1,973,224	62,079	1,103,840	407,529	155,575	1,549,472	544,199
16 and over - population	20,619,959*	344,037	6,565,651	190,571	4,112,707	1,440,400	440,172	5,407,574	2,114,978
16 and over % with dose 1	51.02%	57.54%	56.35%	50.48%	45.24%	48.27%	55.08%	49.85%	44.58%
16 and over % with dose 2	28.90%	34.13%	30.05%	32.58%	26.84%	28.29%	35.34%	28.65%	25.73%
50 and over - dose 1	6,484,179	112,436	2,152,145	40,993	1,228,825	474,468	166,406	1,660,743	608,090
50 and over - dose 2	3,697,725	65,226	1,241,508	25,721	721,700	257,215	102,853	908,682	353,411
50 and over - population	8,749,703	127,802	2,807,793	62,280	1,758,855	674,384	220,036	2,211,211	885,370
50 and over % with dose 1	74.11%	87.98%	76.65%	65.82%	69.87%	70.36%	75.63%	75.11%	68.68%
50 and over % with dose 2	42.26%	51.04%	44.22%	41.30%	41.03%	38.14%	46.74%	41.09%	39.92%
70 and over - dose 1	2,482,569	38,588	830,638	9,246	481,388	196,891	66,568	615,273	225,773
70 and over - dose 2	1,638,279	27,429	545,378	6,567	326,507	122,425	47,076	399,745	151,055
70 and over - population	2,934,706	39,946	962,606	12,343	577,767	240,514	77,155	743,519	280,281
70 and over % with dose 1	84.59%	96.60%	86.29%	74.91%	83.32%	81.86%	86.28%	82.75%	80.55%
70 and over % with dose 2	55.82%	68.67%	56.66%	53.20%	56.51%	50.90%	61.01%	53.76%	53.89%

*National population will not equal sum of listed jurisdictions due to a small number of people counted in national population residing in some 'other' territories

Doses sourced from Australian Immunisation Register, population from ABS ERP June 2020

Vaccinations by location

Cumulative total doses administered vs state populations*

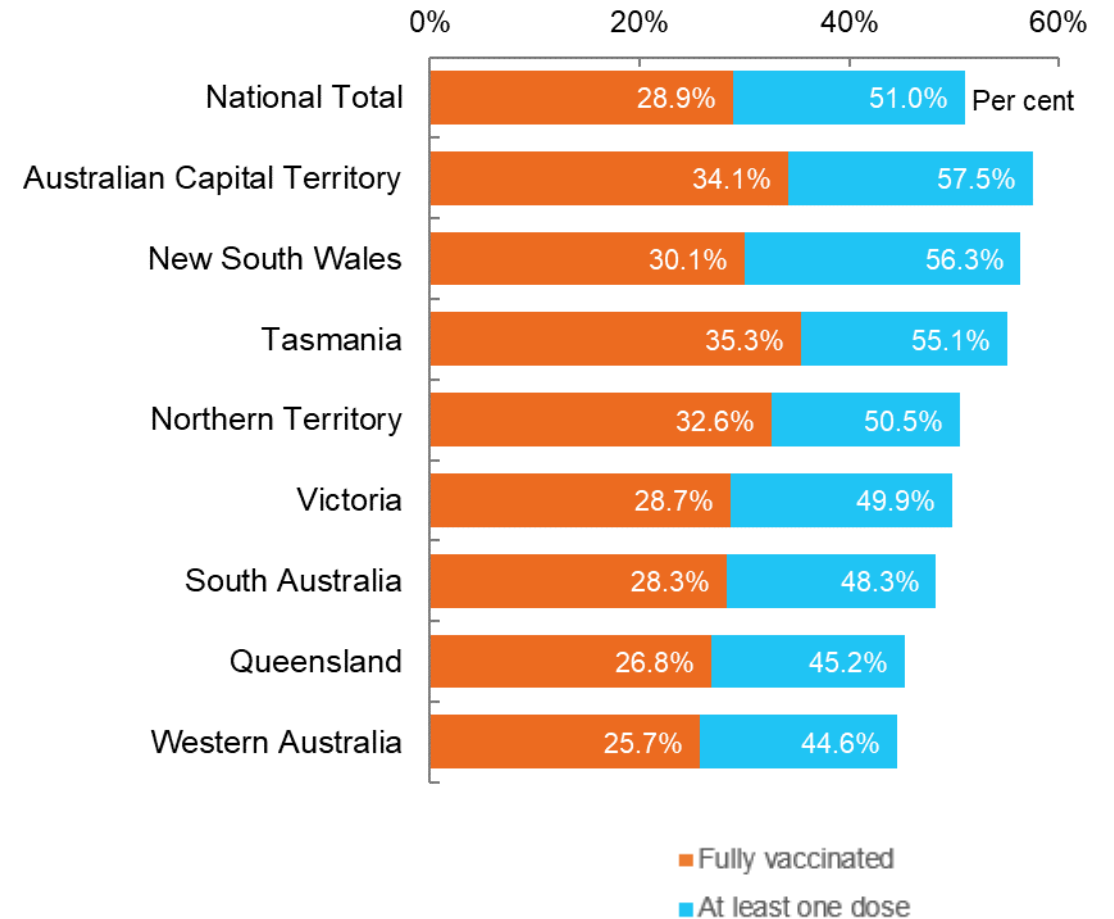


*Not an indication of percentage vaccinated, numbers will exceed 100 due to multiple doses required per person of the population

Data as at:
19 Aug 2021

Australia's COVID-19
Vaccine Roadmap

First and Second Doses by state of residence

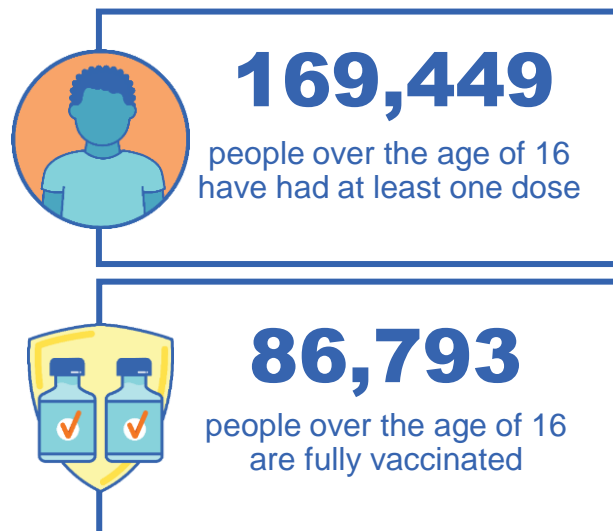


Aboriginal and Torres Strait Islander peoples

Number of people vaccinated

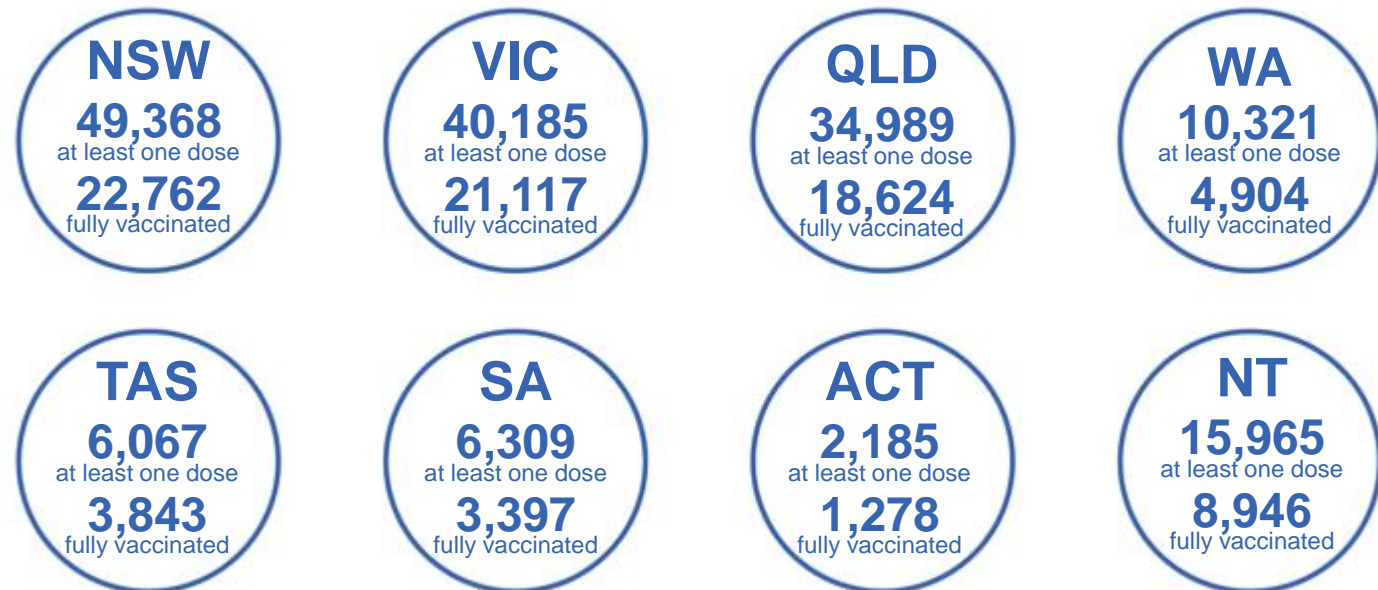
Data as at:
15 Aug 2021
Updated weekly

Australia's COVID-19
Vaccine Roadmap



160 Aboriginal community controlled health services (ACCHS)

0#	45	24	38	11	3	21	18
ACT	NSW	NT	QLD	SA	TAS	VIC	WA



4,060 people with at least one dose
1,922 people fully vaccinated

residing in other territories or with missing residential information
Source: Australian Immunisation Register

*Identifying as Aboriginal and Torres Strait Islander is optional and the estimated population may be under reported.

**Includes all Aboriginal and Torres Strait Islander peoples who have received a vaccination, not limited to those administered in an ACCHS setting

***Updated weekly

#ACCHS in the ACT are currently operating as a Commonwealth Vaccine Clinics so not included to avoid double counting

Data as at:
19 Aug 2021

Commonwealth primary care



Primary care vaccine administration sites

5,250	136	160	2,479
GPs	CVCs	ACCHS	Pharmacies



8,972,838 total vaccine doses administered primary care settings as at 19 August
+179,189 recorded in the last 24 hours

Primary care vaccinations by provider type

	Doses administered	Daily increase	7 day increase
General Practice* includes other Commonwealth	8,812,426	160,635	900,716
Pharmacy	160,412	18,554	87,793

NSW
3,372,981
(+79,263 daily increase)

VIC
2,089,774
(+41,066 daily increase)

QLD
1,738,173
(+28,741 daily increase)

WA
763,299
(+12,703 daily increase)

TAS
175,896
(+2,529 daily increase)

SA
576,320
(+9,442 daily increase)

ACT
149,715
(+3,122 daily increase)

NT
61,555
(+1,145 daily increase)

45,125 doses administered to persons residing in other territories or with missing residential information

*General practice includes Commonwealth Vaccination Clinics, Aboriginal Community Health Centres, Royal Flying Doctor Service and other Commonwealth vaccination facilities

Source: Australian Immunisation Register

Data as at:
19 Aug 2021

Commonwealth aged care and disability doses administered



People vaccinated in aged care
and residential disability facilities

406,974

People with a first dose

285,210

People fully vaccinated

Residential aged care
facilities

2,569

Sites visited for first doses

2,568

Sites visited for second doses



693,200

(+10,104 last 24 hours)

Total vaccine doses administered in aged care
and disability facilities as at 19 August

Number of doses administered as part of the Commonwealth aged and disability care rollout

NSW
302,406

(+6,135 last
24 hours)

VIC
141,504

(+1,368 last
24 hours)

QLD
104,791

(+1,359 last
24 hours)

WA
50,850

(+383 last
24 hours)

TAS
14,661

(+33 last
24 hours)

SA
46,187

(+440 last
24 hours)

ACT
8,439

(+70 last
24 hours)

NT
4,683

(+133 last
24 hours)

19,679

doses administered to persons
residing in other territories or with
missing residential information

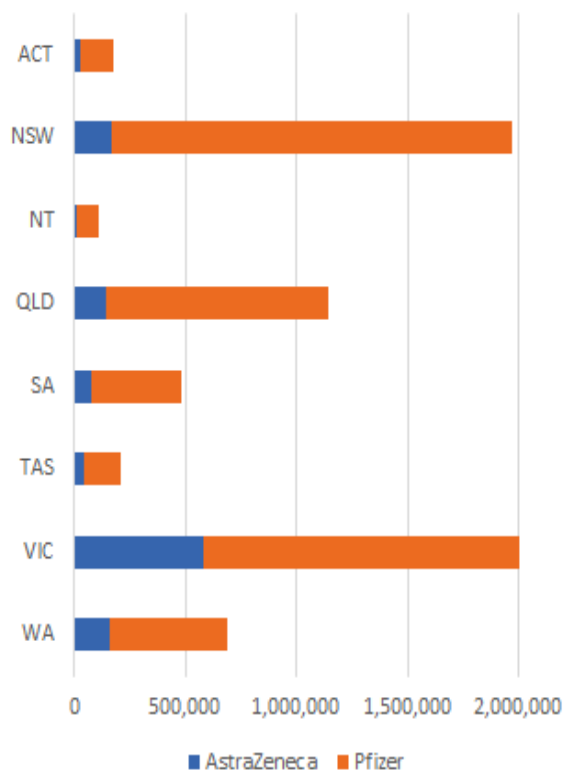
*Sourced from the Australian Immunisation Register. Includes all persons vaccinated at participating residential aged care, disability and related industry settings.

**State level breakdown indicates the residential location and may not align to the state in which the vaccination occurred.

Data as at:
19 Aug 2021

Jurisdiction administered

Total vaccine doses administered in State and Territory clinics as at 19 August



6,838,536 total vaccine doses administered
in State and Territory clinics as at 19 August
+114,011 recorded in the last 24 hours
+663,776 recorded in the last 7 days

NSW
1,968,701
(+35,154 daily increase)

VIC
2,048,442
(+27,884 daily increase)

QLD
1,146,830
(+16,541 daily increase)

WA
686,205
(+15,472 daily increase)

TAS
211,429
(+3,341 daily increase)

SA
482,184
(+6,584 daily increase)

ACT
180,817
(+7,106 daily increase)

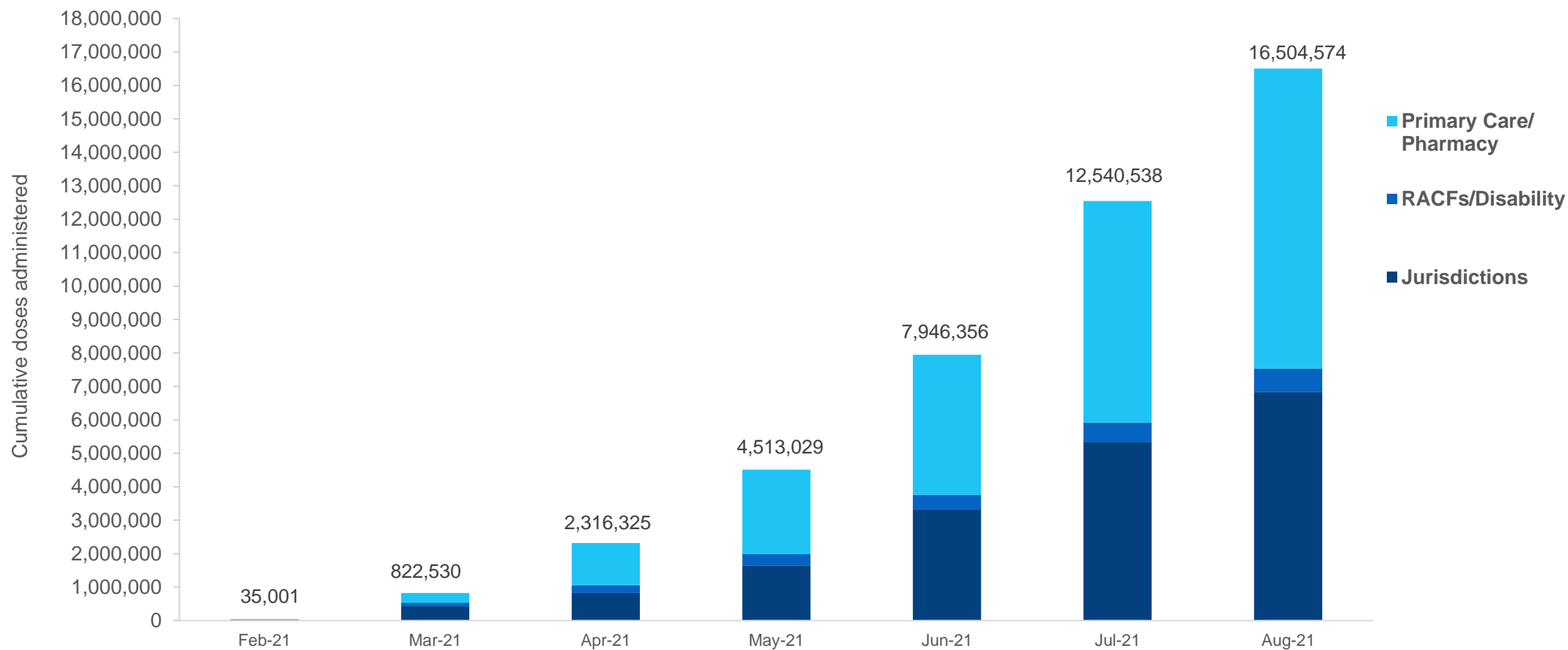
NT
113,928
(+1,929 daily increase)

*Sourced from the Australian Immunisation Register and self-reported data. Numbers are calculated as difference in daily cumulative reported numbers to allow for historical corrections in all self-reported data sources.

Source: Australian Immunisation Register

Cumulative doses administered by channel

Data as at:
19 Aug 2021



Source: Australian Immunisation Register

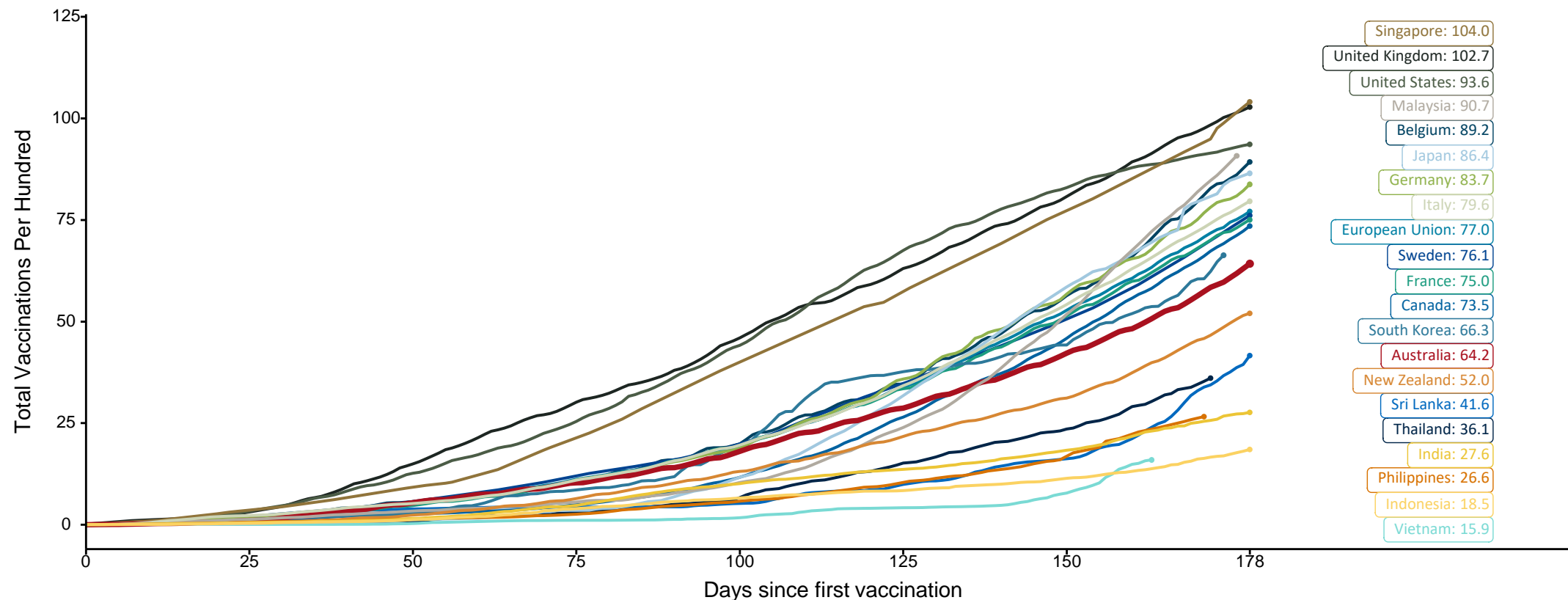
International data - doses at equivalent stages of rollout (Day 178)

Data as at:
19 Aug 2021

Australia's COVID-19
Vaccine Roadmap

The x-axis is truncated at the length of Australia's vaccination program. Countries with intermittent reporting have had their doses per 100 imputed to Australia's current stage of rollout. Israel excluded as it is beyond scale of the graph

Cumulative doses administered (19 Aug): **16,504,574**



Source: Department of Health (Australia), Our World in Data (international)
Latest data: 19 August

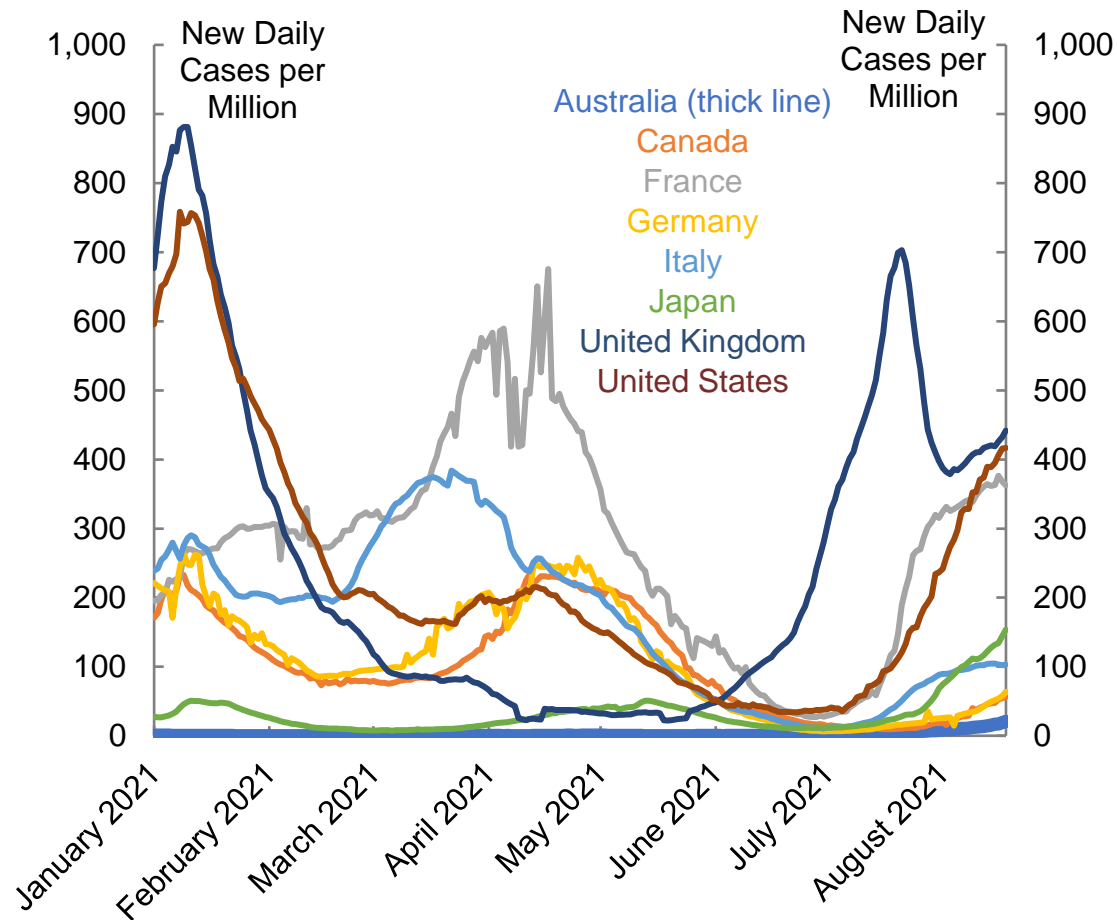
International data – COVID-19

Data as at:
19 Aug 2021

Australia's COVID-19
Vaccine Roadmap

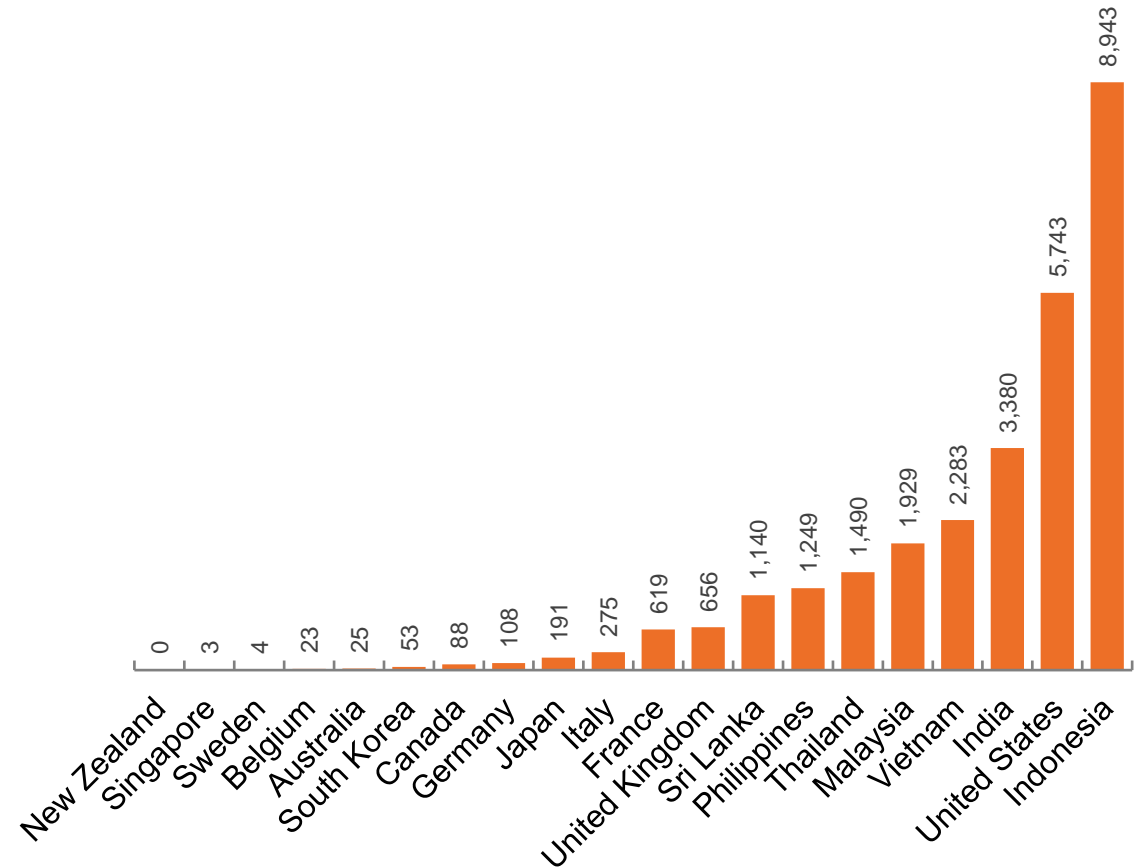
New daily cases per million in 2021, Australia and G7 countries

7 day moving average



Source: Our World in Data, extracted 20 August 2021

COVID-19 deaths in past 7 days - Australia and select countries



Source: Our World in Data, extracted 20 August 2021

Data as at midnight:
19 Aug 2021

Pandemic Response Payments



1.55 million

People have received at least one
COVID Disaster Payment (including ISP200)

2.54 million

Claims granted across three different payments

\$3.31 billion

Paid Out as at 19 Aug 2021



Claims Received Digitally

93%

Three payments available:

COVID Disaster Payment
assisting during a lockdown event
in a Commonwealth hotspot.

Income Support Payment \$200
for income support recipients who lost at
least 8 hours of work.

Pandemic Leave Disaster Payment
for those who have to self-isolate,
quarantine or care.

For more information visit:
www.servicesaustralia.gov.au



COVID Disaster Payment:

2.55 million claims received - 1.45 million individuals paid a total of \$3.21 billion.

\$200 Income Support Payment:

117,000 claims received - 99,000 individuals paid a total of \$40.97 million.

Pandemic Leave Disaster Payment:

42,000 claims received - 35,000 individuals paid a total of \$55.91 million.

COVID-19 DISASTER PAYMENTS

New South Wales

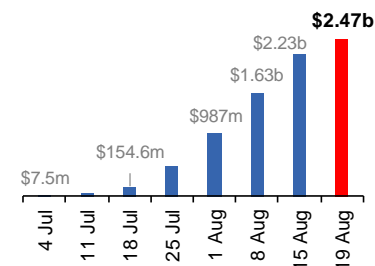
Active lockdown since 24 Jun

**864,000 people have received
at least one COVID Disaster
Payment.**

**\$2.47b paid out as at
19 Aug 2021.**

**\$607m paid in initial and
reoccurring payments in the
week ending 15 Aug 2021.**

Cumulative payments made by State
since activation on 1 Jul 2021.



Victoria

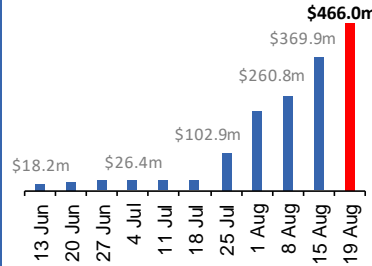
Active lockdown (#6) since 6 Aug

**329,000 people have received
at least one COVID Disaster
Payment.**

**\$466.0m paid out as at
19 Aug 2021.**

**\$109m paid in initial and
reoccurring payments in the
week ending 15 Aug 2021.**

Cumulative payments made by State
since activation on 8 Jun 2021.



South Australia

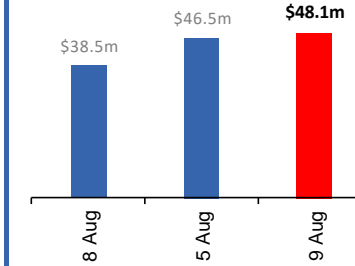
Lockdown from 21 – 27 Jul
Claiming period ends 17 Aug

**86,000 people have received
at least one COVID Disaster
Payment.**

**\$48.1m paid out as at
19 Aug 2021.**

**\$6m paid in initial payments
in the week ending
15 Aug 2021.**

Cumulative payments made by State
since activation on 28 Jul 2021.



Queensland

Lockdown from 31 Jul – 11 Aug
Claiming period ends 28 Aug

**175,000 people have received
at least one COVID Disaster
Payment.**

**\$226.1m paid out as at
19 Aug 2021.**

**\$164m paid in initial and
reoccurring payments in the
week ending 15 Aug 2021.**

Cumulative payments made by State
since activation on 7 Aug 2021.

