



Australian Government
Operation COVID Shield

COVID-19 Vaccine Roll-out

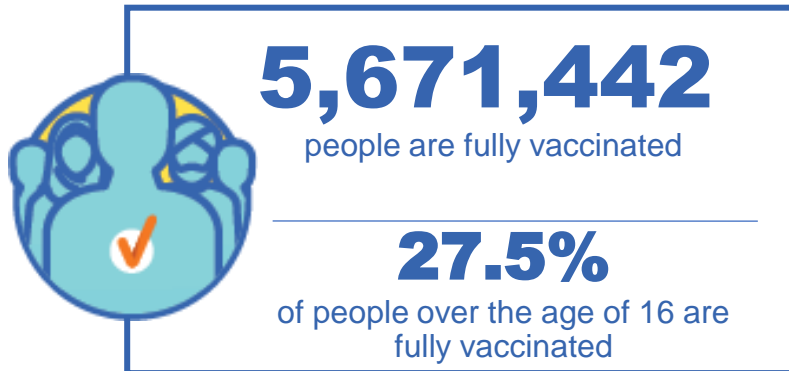
18 August 2021

Data as at:
17 Aug 2021

Total vaccine doses



15,892,260 total vaccine doses administered nationally as at 17 August
+273,869 recorded in the last 24 hours



*Administration state breakdown indicates state in which a vaccine was administered
**Overall dose count includes instances of more than two doses per person in a small number of cases.

Data as at:
17 Aug 2021

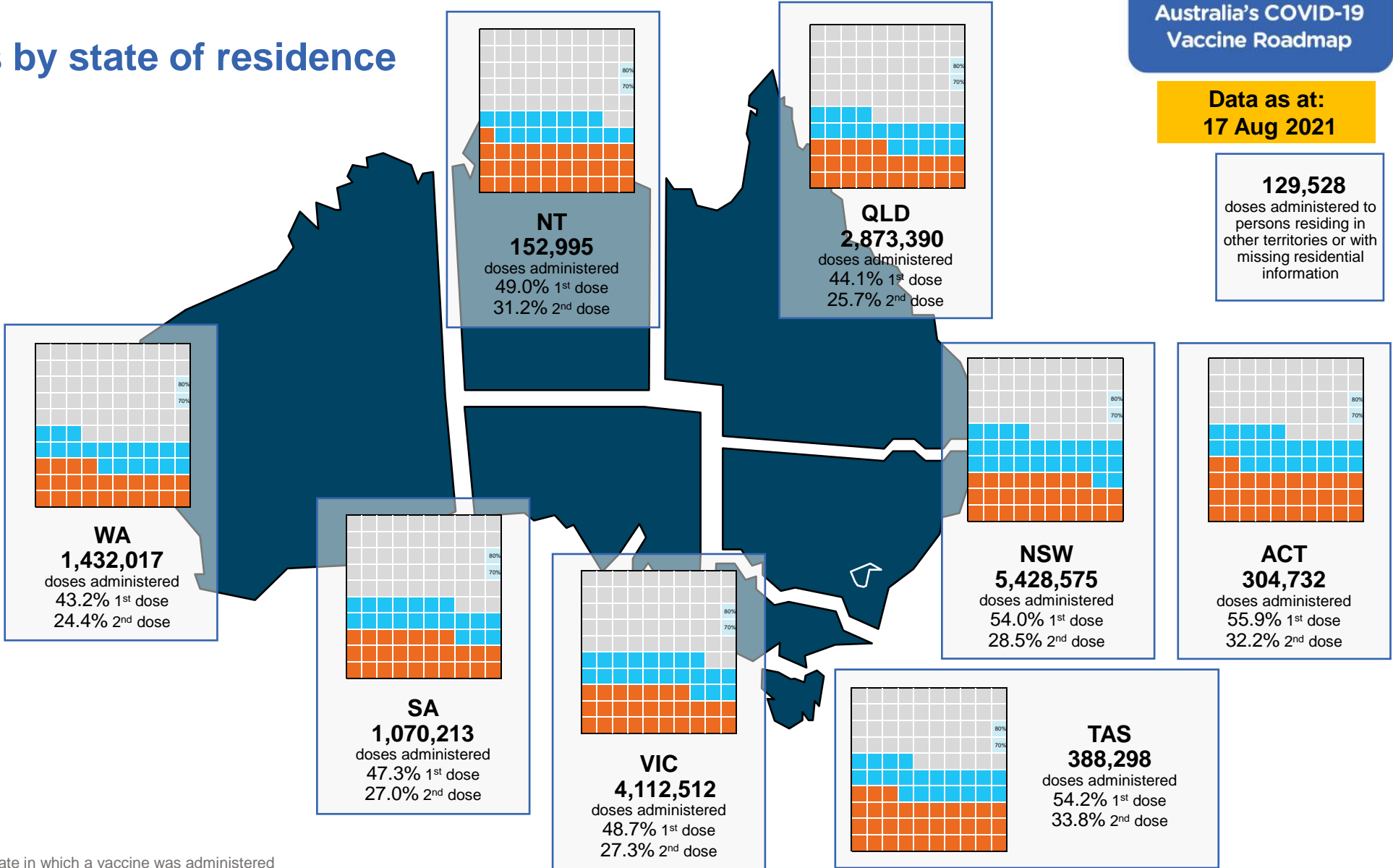
Vaccinations by state of residence

First doses

Age Today	4 weeks ago	8 weeks ago
16+	49.5%	36.6%
50+	73.0%	61.2%
70+	83.8%	76.8%

Fully vaccinated

Age Today	4 weeks ago	8 weeks ago
16+	27.5%	14.9%
50+	40.0%	19.9%
70+	53.9%	33.6%



*Residential state may differ from the state in which a vaccine was administered

Commonwealth and Jurisdiction vaccine doses administered

Data as at:
17 Aug 2021



15,892,260 total vaccine doses administered nationally as at 17 August

+273,869 recorded in the last 24 hours

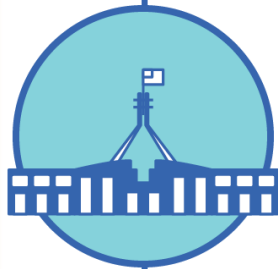


6,605,322

doses administered by state and territory facilities

+99,523

recorded in the last 24 hours



9,286,938

doses administered by commonwealth facilities

+174,346

recorded in the last 24 hours

8,617,369 total vaccine doses administered in primary care settings

669,569 total vaccine doses administered in aged care and disability settings

NSW	Jurisdictions	Commonwealth
Cumulative	1,886,479	3,499,517
Daily increase	30,659	78,891

VIC	Jurisdictions	Commonwealth
Cumulative	1,993,799	2,131,692
Daily increase	26,746	36,994

QLD	Jurisdictions	Commonwealth
Cumulative	1,112,409	1,809,316
Daily increase	14,062	31,530

WA	Jurisdictions	Commonwealth
Cumulative	654,685	788,757
Daily increase	13,235	10,590

TAS	Jurisdictions	Commonwealth
Cumulative	205,402	183,081
Daily increase	2,394	2,388

SA	Jurisdictions	Commonwealth
Cumulative	468,877	601,177
Daily increase	6,584	9,078

ACT	Jurisdictions	Commonwealth
Cumulative	173,572	201,020
Daily increase	4,452	3,676

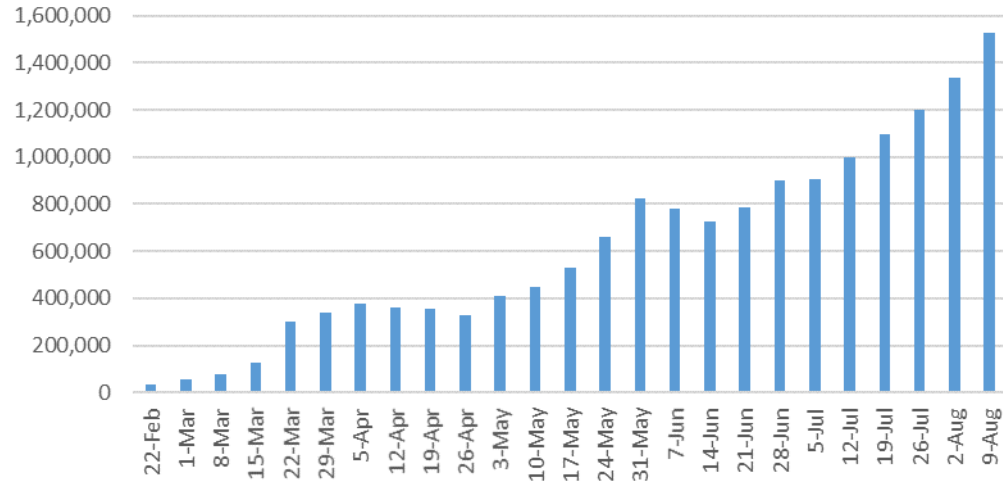
NT	Jurisdictions	Commonwealth
Cumulative	110,099	72,378
Daily increase	1,391	1,199

Vaccine milestone charts

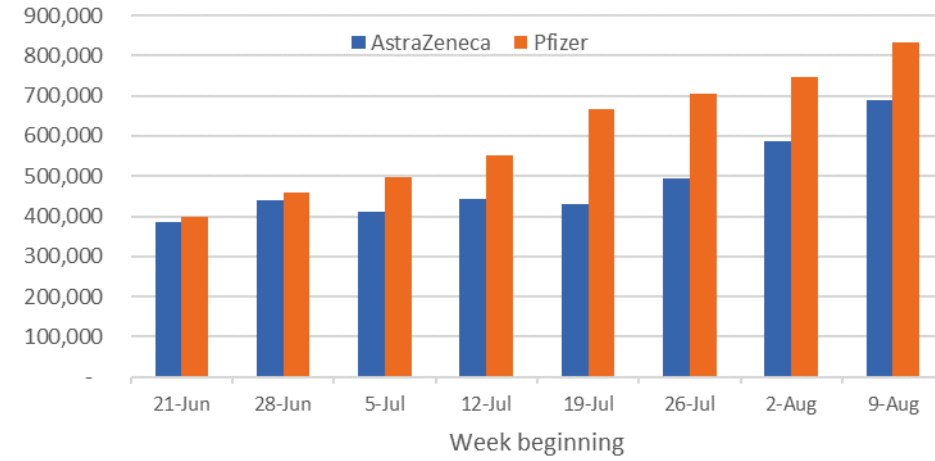
Data as at:
17 Aug 2021

Australia's COVID-19
Vaccine Roadmap

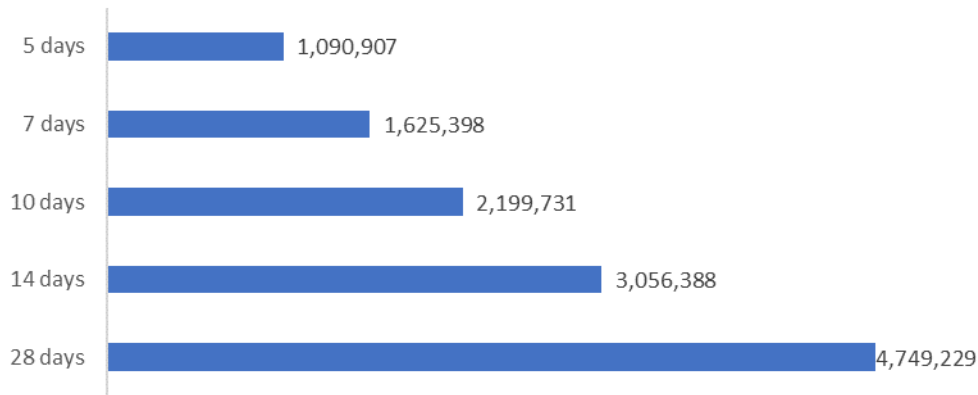
Jabs in arms by week



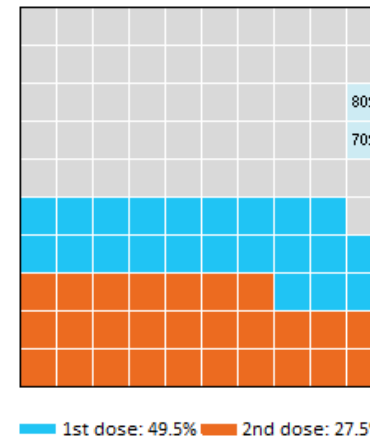
Doses by administration week and vaccine type



Doses reported



Eligible population percentage coverage



*Sourced from the Australian Immunisation Register. Recent days may be understated.

*Each square represents 1% of the national population. Squares are filled as milestones are achieved.

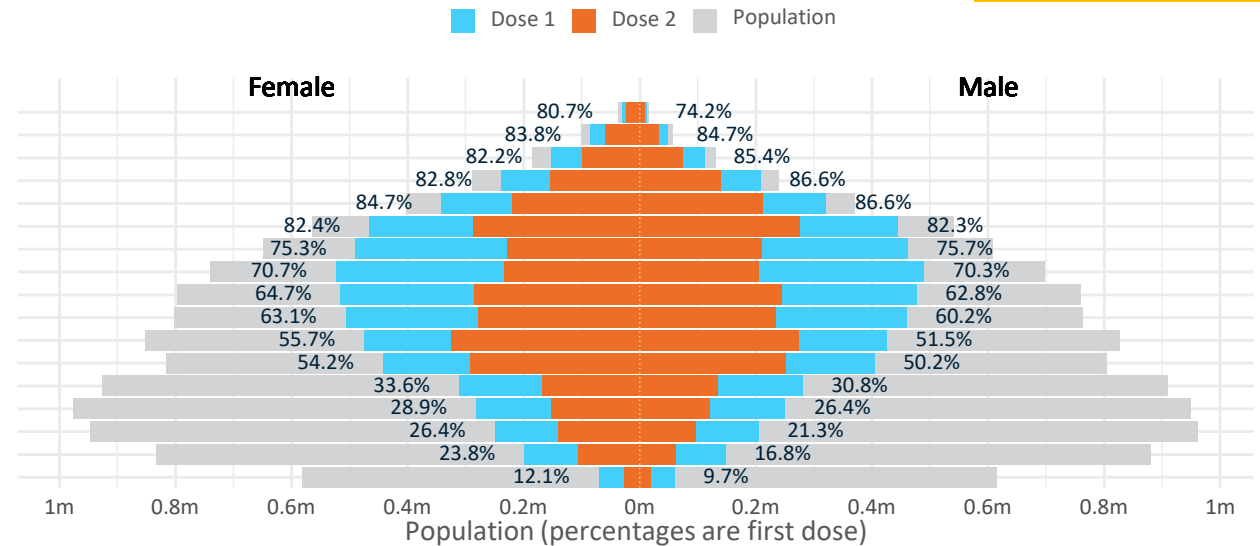
Data as at: 17 Aug 2021

Doses by age and sex

First and second doses by age and sex, using ABS age brackets

AUS	16+	50+	70+
Dose 1	49.45% (10,195,842 doses / 20,619,959 people)	72.97% (6,384,321 doses / 8,749,703 people)	83.84% (2,460,318 doses / 2,934,706 people)
Dose 2	27.50% (5,671,442 doses / 20,619,959 people)	40.01% (3,500,755 doses / 8,749,703 people)	53.94% (1,583,003 doses / 2,934,706 people)

Age	Dose 1	Dose 2
95+	41,765 (78.9%)	30,849 (58.3%)
90-94	133,445 (84.2%)	92,526 (58.4%)
85-89	264,307 (83.6%)	174,089 (55.1%)
80-84	446,925 (84.6%)	293,200 (55.5%)
75-79	662,883 (85.7%)	429,918 (55.6%)
70-74	910,993 (82.4%)	562,421 (50.9%)
65-69	951,345 (75.6%)	438,695 (34.9%)
60-64	1,013,732 (70.6%)	436,751 (30.4%)
55-59	992,785 (63.8%)	529,861 (34.1%)
50-54	966,141 (61.8%)	512,445 (32.8%)
45-49	900,590 (53.7%)	598,786 (35.7%)
40-44	847,215 (52.3%)	543,633 (33.6%)
35-39	592,544 (32.3%)	303,826 (16.6%)
30-34	534,953 (27.8%)	273,871 (14.2%)
25-29	457,738 (24.0%)	237,582 (12.5%)
20-24	348,010 (20.3%)	168,053 (9.8%)
16-19	130,471 (10.9%)	44,936 (3.8%)



DOH (Australian Immunisation Register), ABS (Population)

	AUS	ACT	NSW	NT	QLD	SA	TAS	VIC	WA
16 and over - dose 1	10,195,842	192,325	3,547,120	93,291	1,811,893	680,678	238,592	2,632,389	914,091
16 and over - dose 2	5,671,442	110,697	1,871,458	59,404	1,057,330	388,472	148,716	1,475,180	516,297
16 and over - population	20,619,959*	344,037	6,565,651	190,571	4,112,707	1,440,400	440,172	5,407,574	2,114,978
16 and over % with dose 1	49.45%	55.90%	54.03%	48.95%	44.06%	47.26%	54.20%	48.68%	43.22%
16 and over % with dose 2	27.50%	32.18%	28.50%	31.17%	25.71%	26.97%	33.79%	27.28%	24.41%
50 and over - dose 1	6,384,321	110,930	2,109,220	40,270	1,209,842	467,753	164,950	1,642,008	599,863
50 and over - dose 2	3,500,755	61,234	1,178,061	24,530	688,130	242,955	98,149	851,958	335,090
50 and over - population	8,749,703	127,802	2,807,793	62,280	1,758,855	674,384	220,036	2,211,211	885,370
50 and over % with dose 1	72.97%	86.80%	75.12%	64.66%	68.79%	69.36%	74.97%	74.26%	67.75%
50 and over % with dose 2	40.01%	47.91%	41.96%	39.39%	39.12%	36.03%	44.61%	38.53%	37.85%
70 and over - dose 1	2,460,318	38,264	821,079	9,168	477,431	195,157	66,190	610,800	224,151
70 and over - dose 2	1,583,003	26,661	527,422	6,375	316,478	117,743	45,899	384,566	145,944
70 and over - population	2,934,706	39,946	962,606	12,343	577,767	240,514	77,155	743,519	280,281
70 and over % with dose 1	83.84%	95.79%	85.30%	74.28%	82.63%	81.14%	85.79%	82.15%	79.97%
70 and over % with dose 2	53.94%	66.74%	54.79%	51.65%	54.78%	48.95%	59.49%	51.72%	52.07%

*National population will not equal sum of listed jurisdictions due to a small number of people counted in national population residing in some 'other' territories

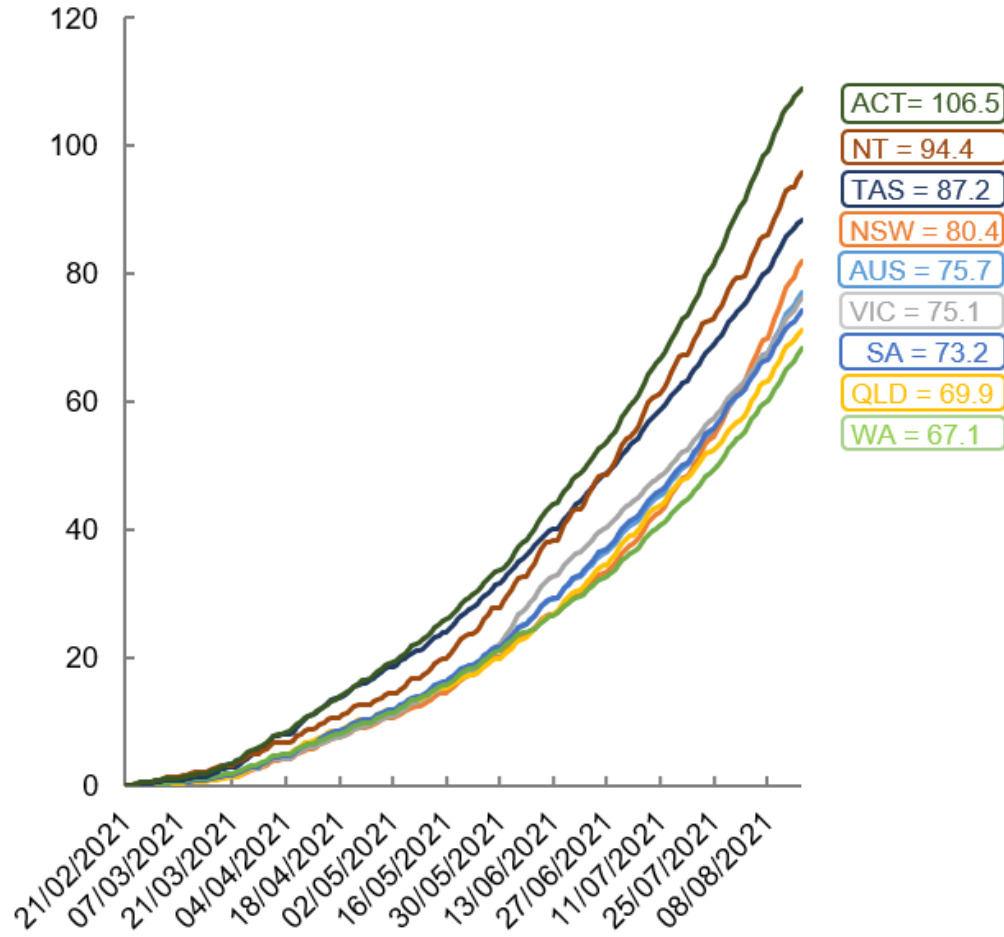
Doses sourced from Australian Immunisation Register, population from ABS ERP June 2020

Vaccinations by location

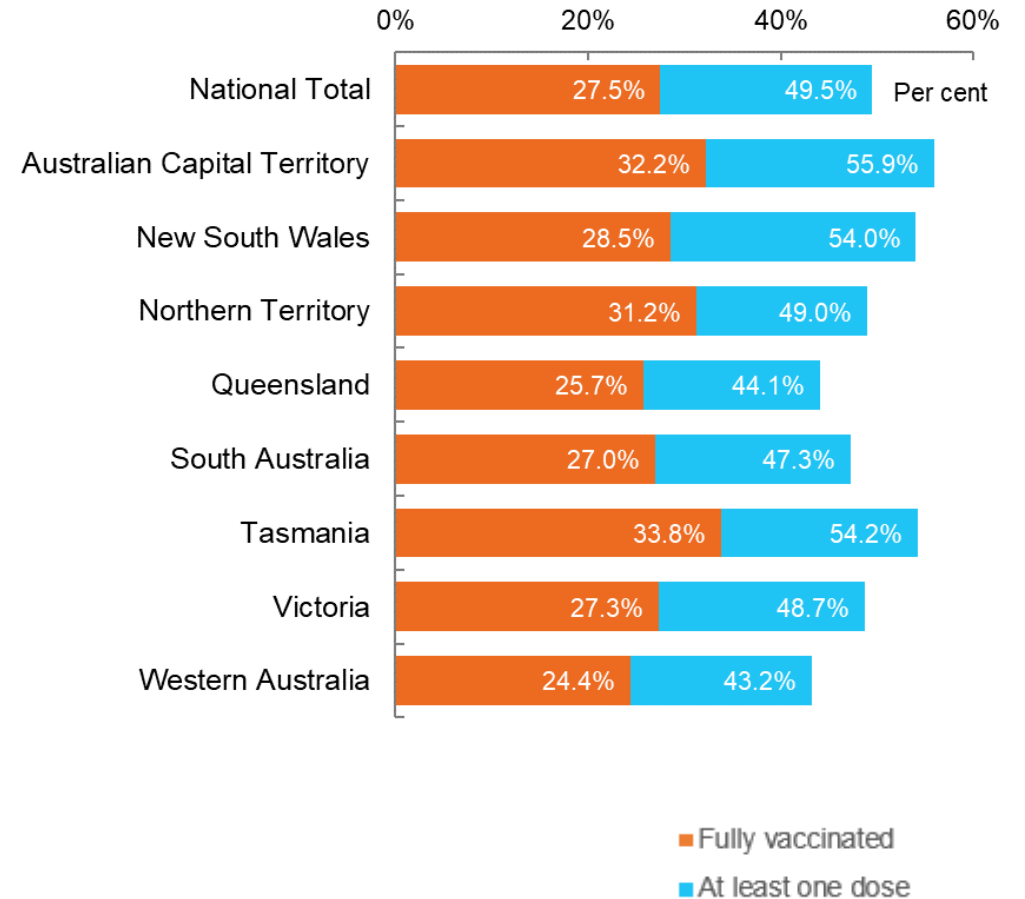
Data as at:
17 Aug 2021

Australia's COVID-19
Vaccine Roadmap

Cumulative total doses administered vs state populations*



First and Second Doses by state of residence

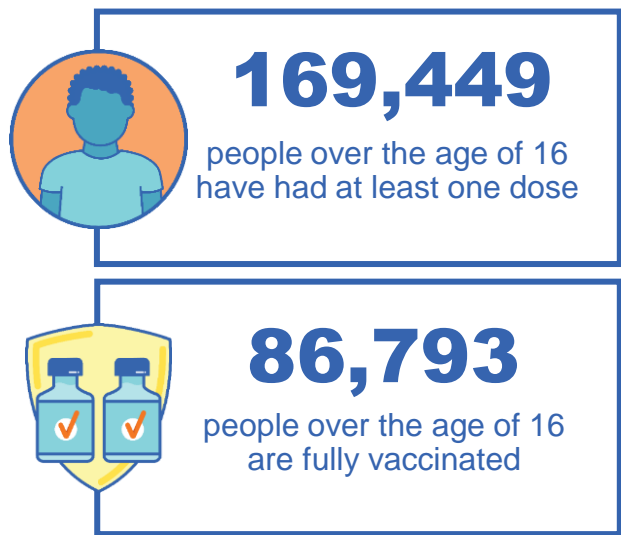


*Not an indication of percentage vaccinated, numbers will exceed 100 due to multiple doses required per person of the population

Aboriginal and Torres Strait Islander peoples

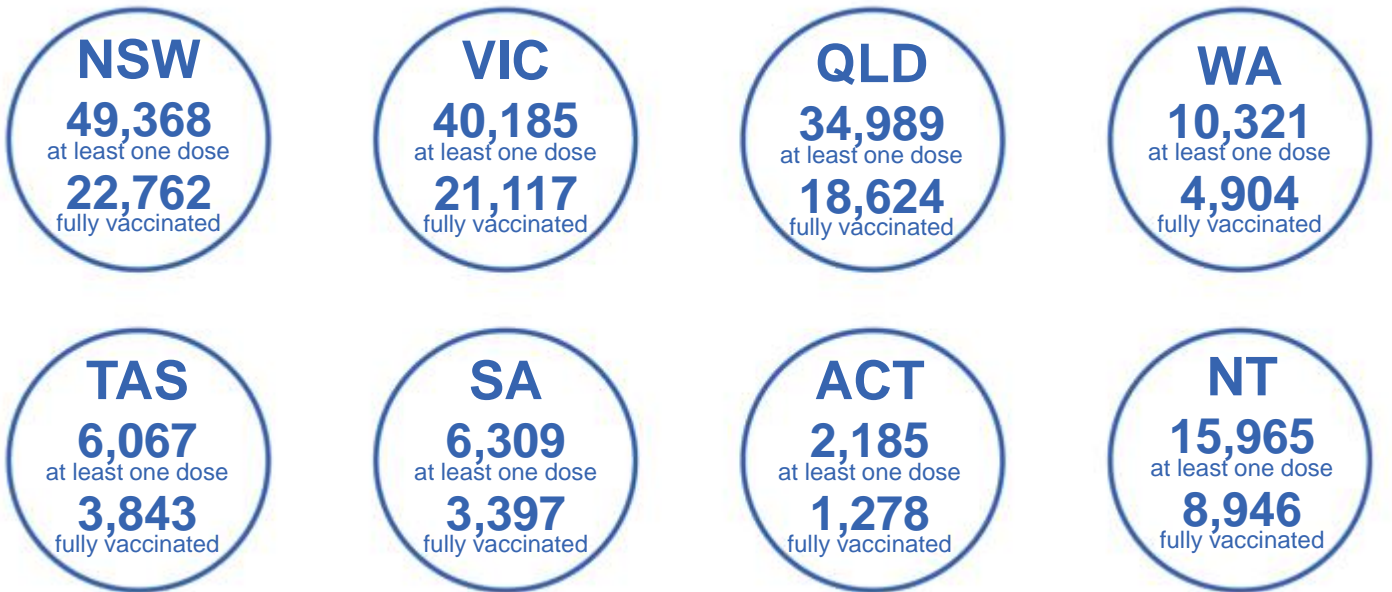
Number of people vaccinated

Data as at:
15 Aug 2021
Updated weekly



160 Aboriginal community controlled health services (ACCHS)

0#	45	24	38	11	3	21	18
ACT	NSW	NT	QLD	SA	TAS	VIC	WA



4,060 people with at least one dose
1,922 people fully vaccinated

residing in other territories or with missing residential information
Source: Australian Immunisation Register

*Identifying as Aboriginal and Torres Strait Islander is optional and the estimated population may be under reported.
**Includes all Aboriginal and Torres Strait Islander peoples who have received a vaccination, not limited to those administered in an ACCHS setting
***Updated weekly
#ACCHS in the ACT are currently operating as a Commonwealth Vaccine Clinics so not included to avoid double counting

Data as at: 17 Aug 2021

Commonwealth primary care



Primary care vaccine administration sites

5,250	136	160	2,479
GPs	CVCs	ACCHS	Pharmacies

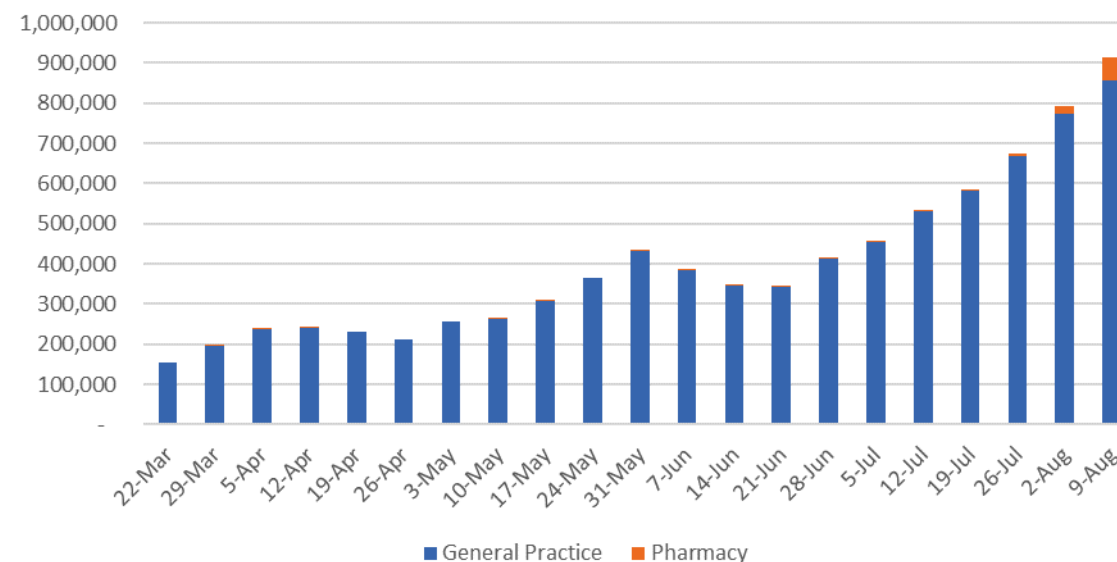


8,617,369 total vaccine doses administered primary care settings as at 17 August
+170,660 recorded in the last 24 hours

Primary care vaccinations by provider type

	Doses administered	Daily increase	7 day increase
General Practice*	8,492,338	154,882	894,339
Pharmacy	125,031	15,778	72,788

Primary Care weekly vaccines administered



*General practice includes Commonwealth Vaccination Clinics, Aboriginal Community Health Centres, Royal Flying Doctor Service and other Commonwealth vaccination facilities

Source: Australian Immunisation Register

Data as at:
17 Aug 2021

Commonwealth aged care and disability doses administered



People vaccinated in aged care
and residential disability facilities

392,153

People with a first dose

276,063

People fully vaccinated

Residential aged care
facilities

2,569

Sites visited for first doses

2,568

Sites visited for second doses



669,569

(+3,686 last 24 hours)

Total vaccine doses administered in aged care
and disability facilities as at 17 August

Number of doses administered as part of the Commonwealth aged and disability care rollout



19,301

doses administered to persons
residing in other territories or with
missing residential information

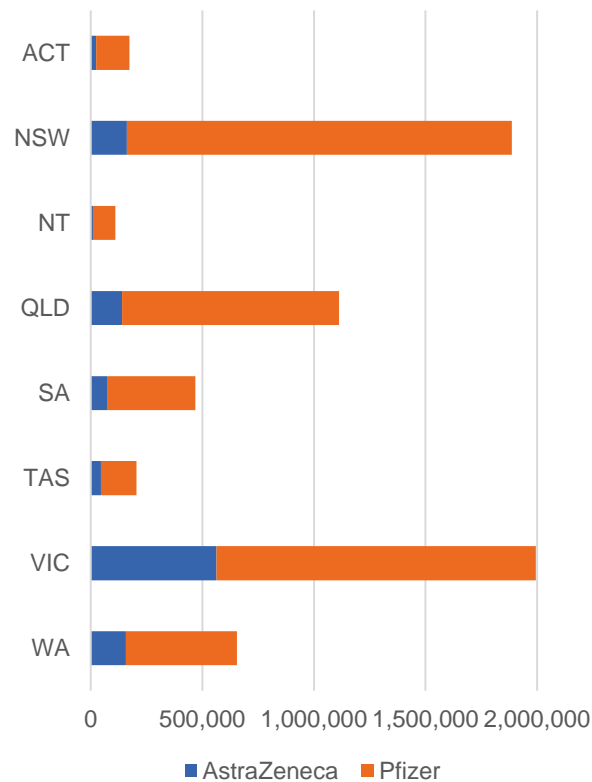
*Sourced from the Australian Immunisation Register. Includes all persons vaccinated at participating residential aged care, disability and related industry settings.

**State level breakdown indicates the residential location and may not align to the state in which the vaccination occurred.

Data as at:
17 Aug 2021

Jurisdiction administered

Total vaccine doses administered in State and Territory clinics as at 17 August



6,605,322 total vaccine doses administered in State and Territory clinics as at 17 August
 + **99,523** recorded in the last 24 hours
 + **624,467** recorded in the last 7 days

NSW
1,886,479
 (+30,659 daily increase)

VIC
1,993,799
 (+26,746 daily increase)

QLD
1,112,409
 (+14,062 daily increase)

WA
654,685
 (+13,235 daily increase)

TAS
205,402
 (+2,394 daily increase)

SA
468,877
 (+6,584 daily increase)

ACT
173,572
 (+4,452 daily increase)

NT
110,099
 (+1,391 daily increase)

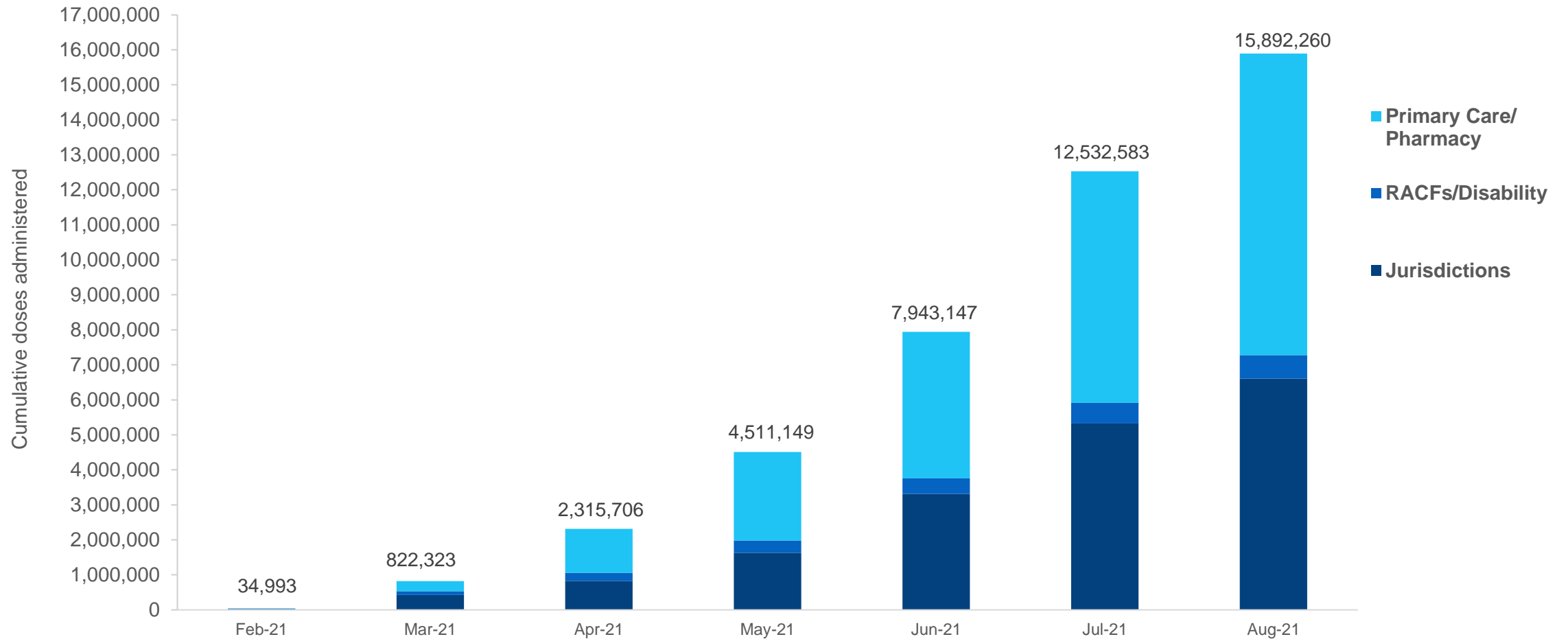
*Sourced from the Australian Immunisation Register and self-reported data. Numbers are calculated as difference in daily cumulative reported numbers to allow for historical corrections in all self-reported data sources.

Source: Australian Immunisation Register

Cumulative doses administered by channel

Data as at:
17 Aug 2021

Cumulative doses administered: **15,892,260**



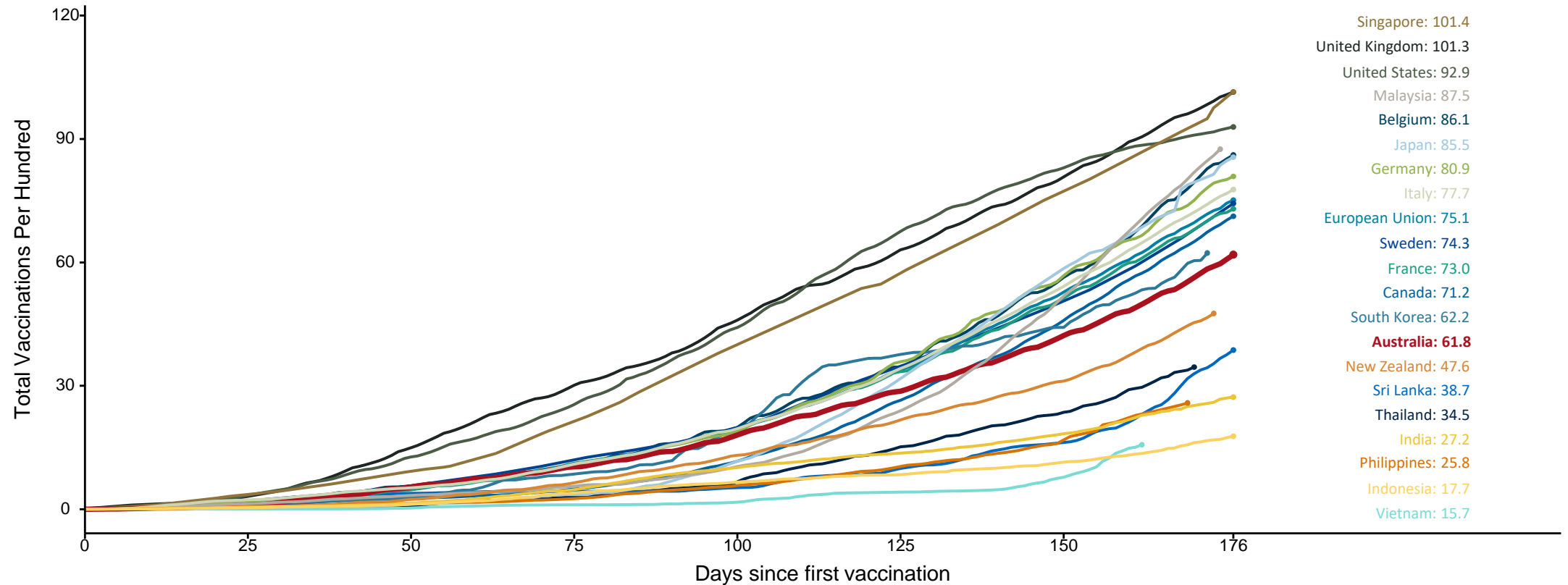
Source: Australian Immunisation Register

International data - doses at equivalent stages of rollout (Day 176)

Data as at:
17 Aug 2021

The x-axis is truncated at the length of Australia's vaccination program. Countries with intermittent reporting have had their doses per 100 imputed to Australia's current stage of rollout. Israel excluded as it is beyond scale of the graph

Cumulative doses administered (17 Aug): **15,892,260**



Source: Department of Health (Australia), Our World in Data (international)
Latest data: 17 August

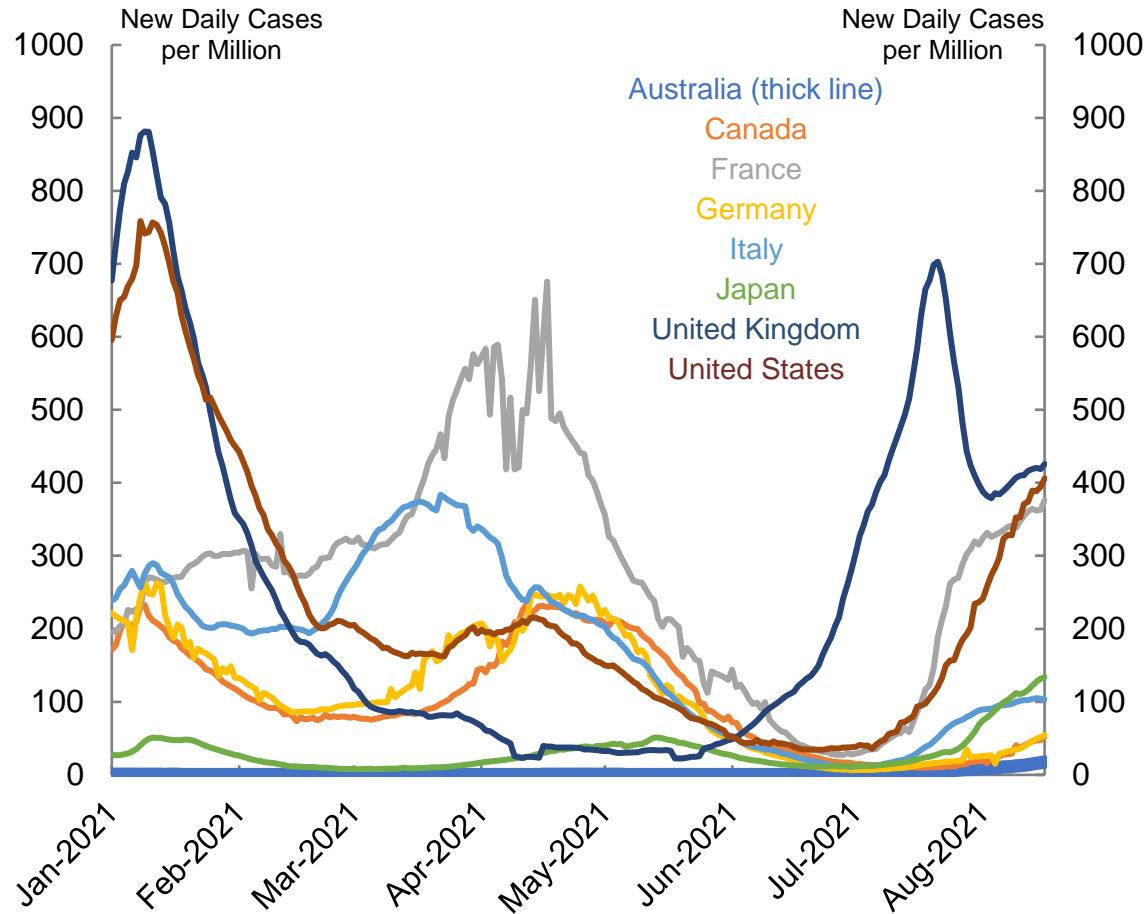
International data – COVID-19

Data as at:
17 Aug 2021

Australia's COVID-19
Vaccine Roadmap

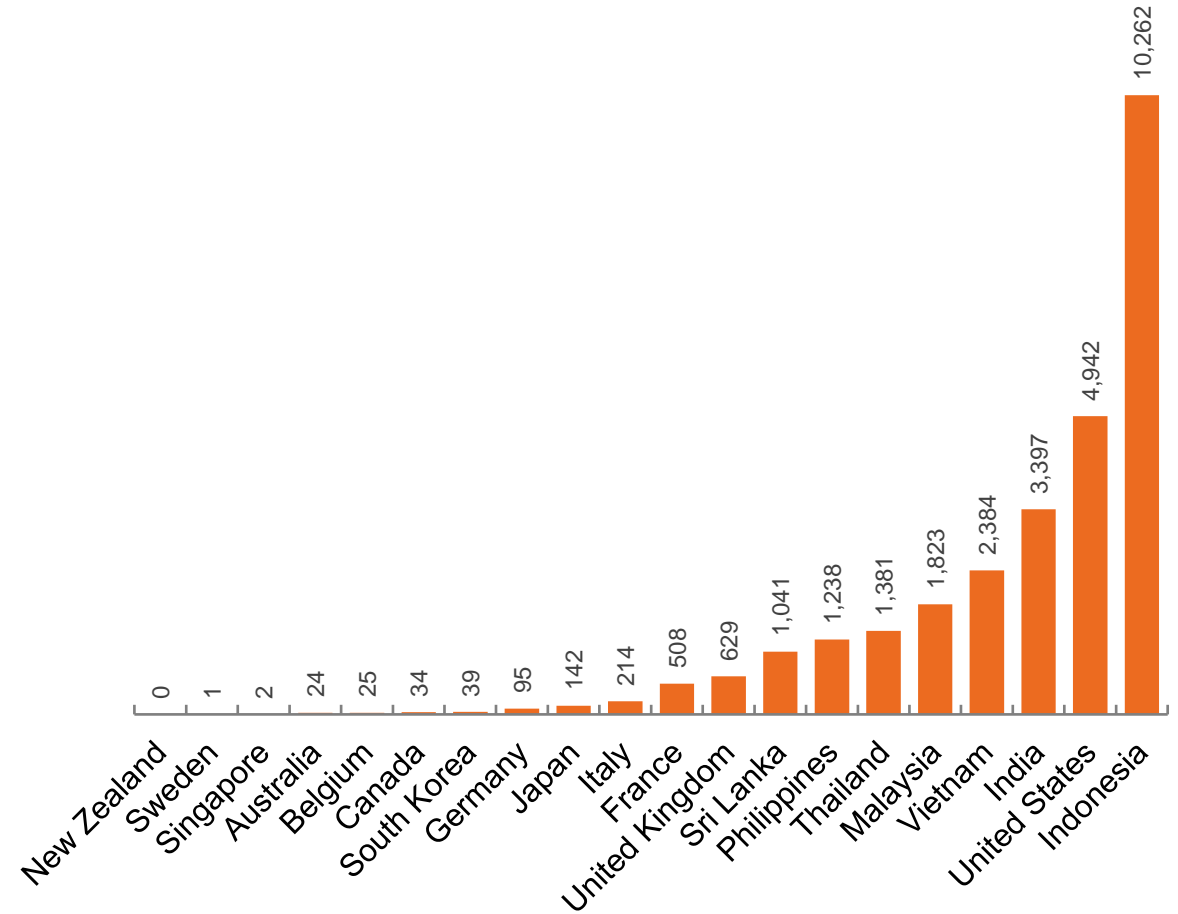
New daily cases per million in 2021, Australia and G7 countries

7 day moving average



Source: Our World in Data, extracted 18 August 2021

COVID-19 deaths in past 7 days - Australia and select countries



Source: Our World in Data, extracted 18 August 2021

Data as at midnight:
17 Aug 2021

Pandemic Response Payments



1.45 million

People have received at least one COVID Disaster Payment (including ISP200)

2.37 million

Claims granted across three different payments

\$3.08 billion

Paid Out as at 17 Aug 2021



Claims Received Digitally

93%

1.53m claims finalised by Digital Enabled Processing

Three payments available:

COVID Disaster Payment assisting during a lockdown event in a Commonwealth hotspot.

Income Support Payment \$200 for income support recipients who lost at least 8 hours of work.

Pandemic Leave Disaster Payment for those who have to self-isolate, quarantine or care.

For more information visit:

www.servicesaustralia.gov.au



COVID Disaster Payment:	2.46 million claims received - 1.36 million individuals paid a total of \$2.99 billion.
\$200 Income Support Payment:	107,000 claims received - 90,000 individuals paid a total of \$37.88 million.
Pandemic Leave Disaster Payment:	41,000 claims received - 34,000 individuals paid a total of \$54.16 million.

COVID-19 DISASTER PAYMENTS

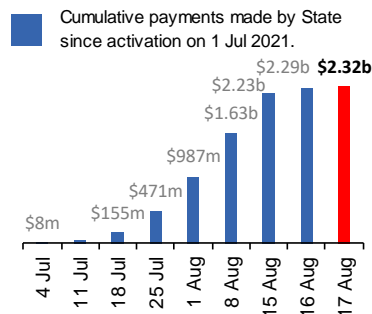
New South Wales

Active lockdown since 24 Jun

816,000 have received at least one COVID Disaster Payment.

\$2.32b paid out as at 17 Aug.

\$607m paid in initial and reoccurring payments in the week ending 15 Aug.



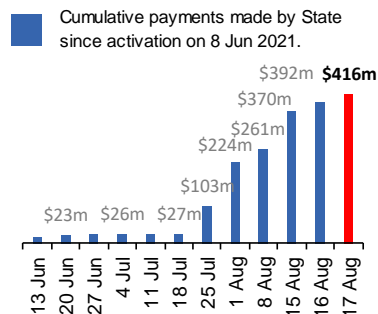
Victoria

Active lockdown (#6) since 6 Aug

302,000 have received at least one COVID Disaster Payment.

\$416m paid out as at 17 Aug.

\$109m paid in initial and reoccurring payments in the week ending 15 Aug.



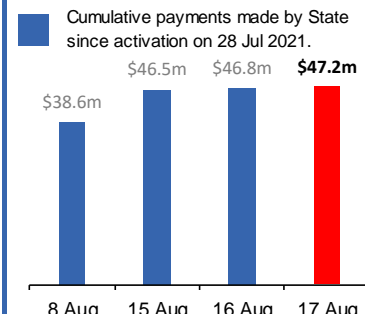
South Australia

Lockdown from 21 – 27 Jul
Claiming period ends 17 Aug

84,000 have received at least one COVID Disaster Payment.

\$47.2m paid out as at 17 Aug.

\$6m paid in initial payments in the week ending 15 Aug.



Queensland

Lockdown from 31 Jul – 11 Aug
Claiming period ends 28 Aug

161,000 have received at least one COVID Disaster Payment.

\$210.8m paid out as at 17 Aug.

\$164m paid in initial payments in the week ending 15 Aug.

