



**Australian Government**  
**Operation COVID Shield**

# COVID-19 Vaccine Roll-out

17 August 2021

Data as at:  
16 Aug 2021

## Total vaccine doses



**15,618,391** total vaccine  
doses administered nationally as at 16 August  
**+ 279,465** recorded in the last 24 hours



**10,051,748**

people have had at least one  
dose

**48.7%**

of people over the age of 16  
have had at least one dose



**5,542,237**

people are fully vaccinated

**26.9%**

of people over the age of 16 are  
fully vaccinated

**NSW**  
**5,276,446**  
(+106,122 daily  
increase)

**VIC**  
**4,061,751**  
(+79,810 daily  
increase)

**QLD**  
**2,876,133**  
(+38,375 daily  
increase)

**WA**  
**1,419,617**  
(+25,122 daily  
increase)

**TAS**  
**383,701**  
(+4,102 daily  
increase)

**SA**  
**1,054,392**  
(+14,142 daily  
increase)

**ACT**  
**366,464**  
(+9,946 daily  
increase)

**NT**  
**179,887**  
(+1,846 daily  
increase)

\*Administration state breakdown indicates state in which a vaccine was administered

\*\*Overall dose count includes instances of more than two doses per person in a small number of cases.

Source: Australian Immunisation Register

Data as at:  
16 Aug 2021

**128,969**

doses administered to  
persons residing in  
other territories or with  
missing residential  
information

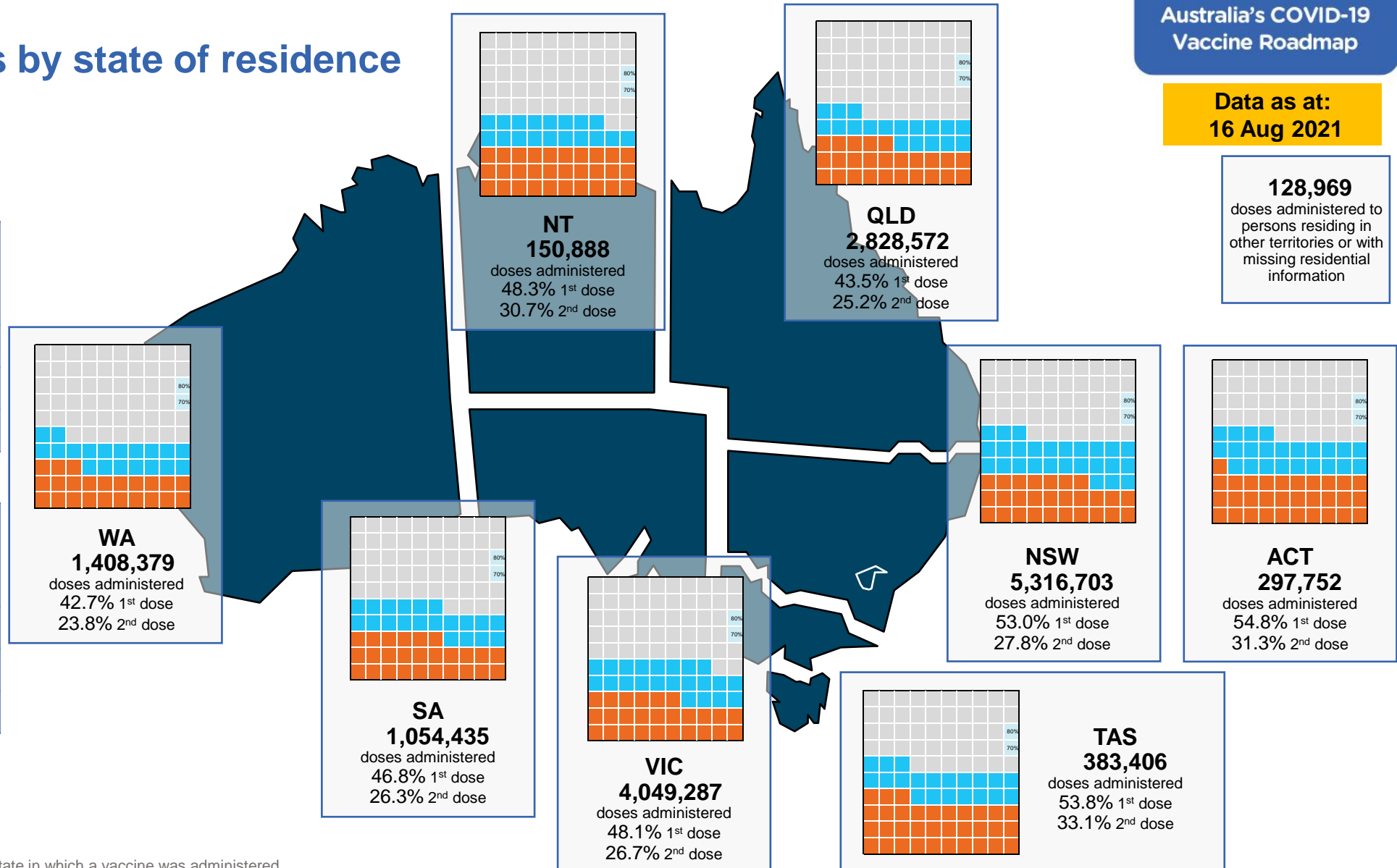
## Vaccinations by state of residence

### First doses

Age Today	4 weeks ago	8 weeks ago
16+	48.7%	36.2%
50+	72.4%	60.7%
70+	83.5%	76.4%

### Fully vaccinated

Age Today	4 weeks ago	8 weeks ago
16+	26.9%	14.5%
50+	39.0%	19.1%
70+	53.1%	32.4%



\*Residential state may differ from the state in which a vaccine was administered

## Commonwealth and Jurisdiction vaccine doses administered

Data as at:  
16 Aug 2021



**15,618,391** total vaccine  
doses administered nationally as at 16 August

**+ 279,465** recorded in the last 24 hours

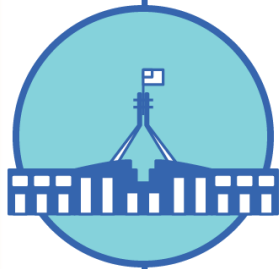


**6,505,799**

doses administered by state  
and territory facilities

**+ 102,188**

recorded in the last 24 hours



**9,112,592**

doses administered by  
commonwealth facilities

**+177,277**

recorded in the last 24 hours

**8,446,709** total vaccine doses  
administered in primary care settings

**665,883** total vaccine doses  
administered in aged care and disability  
settings

NSW	Jurisdictions	Commonwealth
Cumulative	1,855,820	3,420,626
Daily increase	26,611	79,511

VIC	Jurisdictions	Commonwealth
Cumulative	1,967,053	2,094,698
Daily increase	45,520	34,290

QLD	Jurisdictions	Commonwealth
Cumulative	1,098,347	1,777,786
Daily increase	6,706	31,669

WA	Jurisdictions	Commonwealth
Cumulative	641,450	778,167
Daily increase	12,210	12,912

TAS	Jurisdictions	Commonwealth
Cumulative	203,008	180,693
Daily increase	1,577	2,525

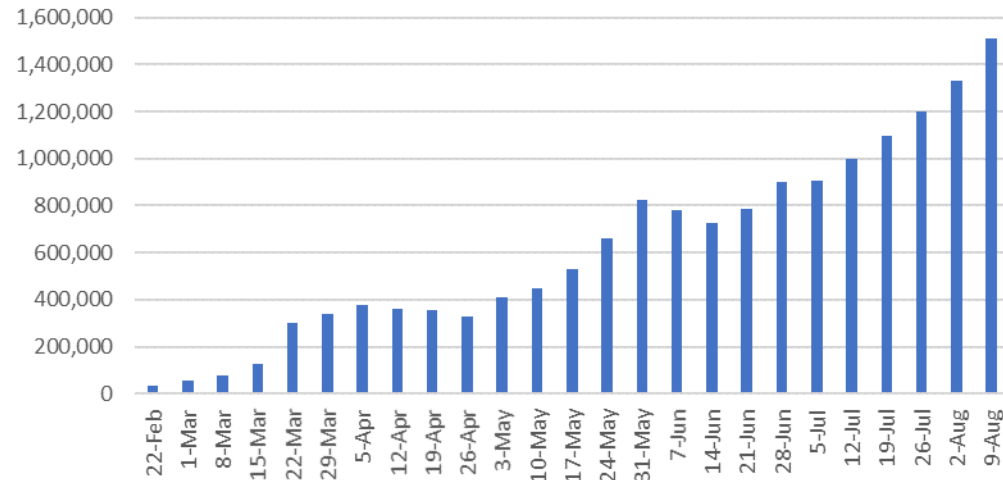
SA	Jurisdictions	Commonwealth
Cumulative	462,293	592,099
Daily increase	6,409	7,733

ACT	Jurisdictions	Commonwealth
Cumulative	169,120	197,344
Daily increase	2,086	7,860

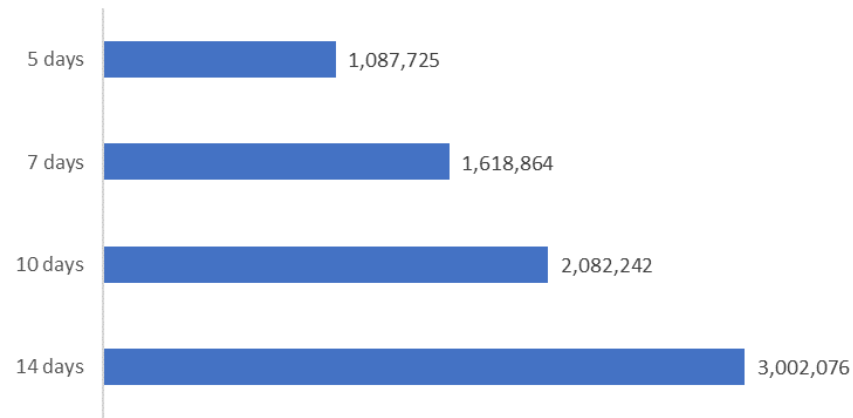
NT	Jurisdictions	Commonwealth
Cumulative	108,708	71,179
Daily increase	1,069	777

# Vaccine milestone charts

Jabs in arms by week



Doses reported

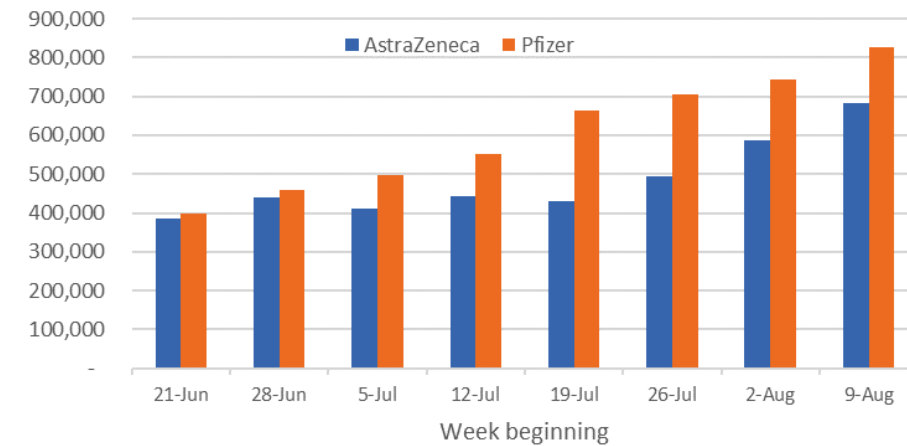


\*Sourced from the Australian Immunisation Register. Recent days may be understated.

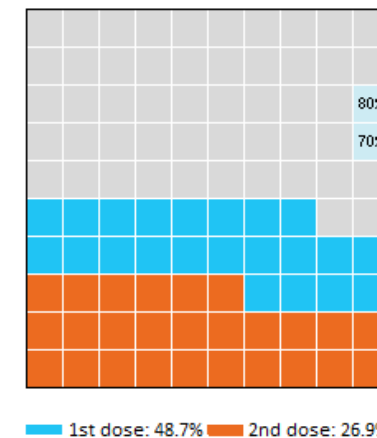
Data as at:  
16 Aug 2021

Australia's COVID-19  
Vaccine Roadmap

Doses by administration week and vaccine type



Eligible population percentage coverage



\*Each square represents 1% of the national population.  
Squares are filled as milestones are achieved.

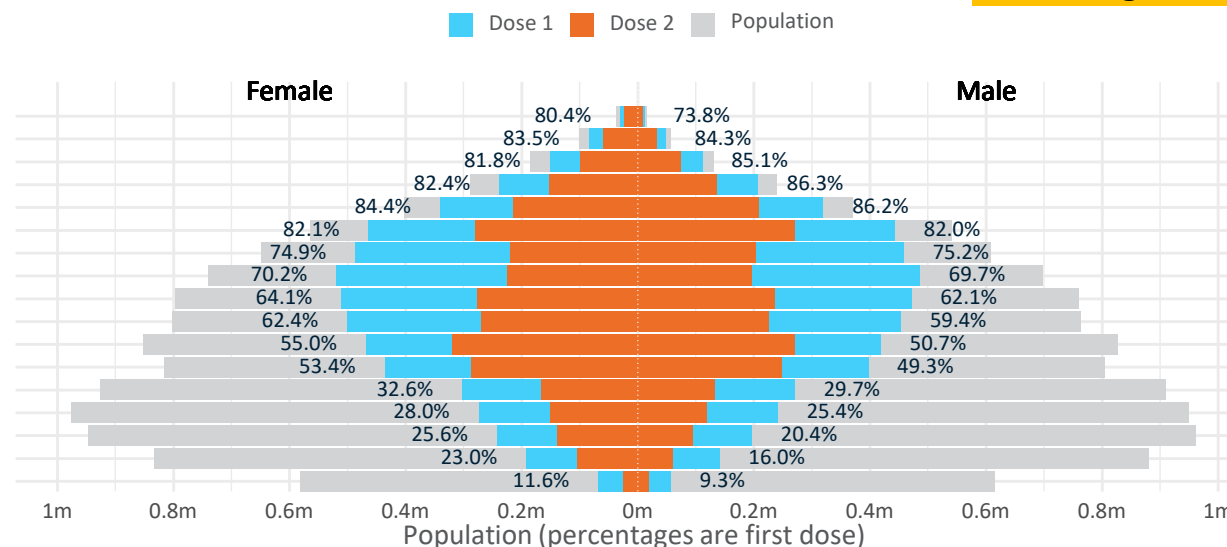
# Doses by age and sex

First and second doses by age and sex, using ABS age brackets

Australia's COVID-19  
Vaccine Roadmap

Data as at:  
16 Aug 2021

Age	Dose 1	Dose 2
95+	41,608 (78.6%)	30,599 (57.8%)
90-94	132,908 (83.9%)	91,497 (57.8%)
85-89	263,219 (83.2%)	171,705 (54.3%)
80-84	445,110 (84.2%)	288,745 (54.6%)
75-79	660,204 (85.3%)	422,776 (54.6%)
70-74	906,911 (82.1%)	551,681 (49.9%)
65-69	945,275 (75.1%)	423,311 (33.6%)
60-64	1,005,708 (70.0%)	421,615 (29.3%)
55-59	982,322 (63.1%)	511,888 (32.9%)
50-54	954,152 (61.0%)	495,258 (31.7%)
45-49	887,529 (52.9%)	588,671 (35.1%)
40-44	833,436 (51.4%)	534,100 (33.0%)
35-39	573,886 (31.3%)	298,396 (16.3%)
30-34	517,547 (26.9%)	269,233 (14.0%)
25-29	442,490 (23.2%)	233,888 (12.3%)
20-24	334,712 (19.5%)	165,107 (9.6%)
16-19	124,731 (10.4%)	43,767 (3.7%)



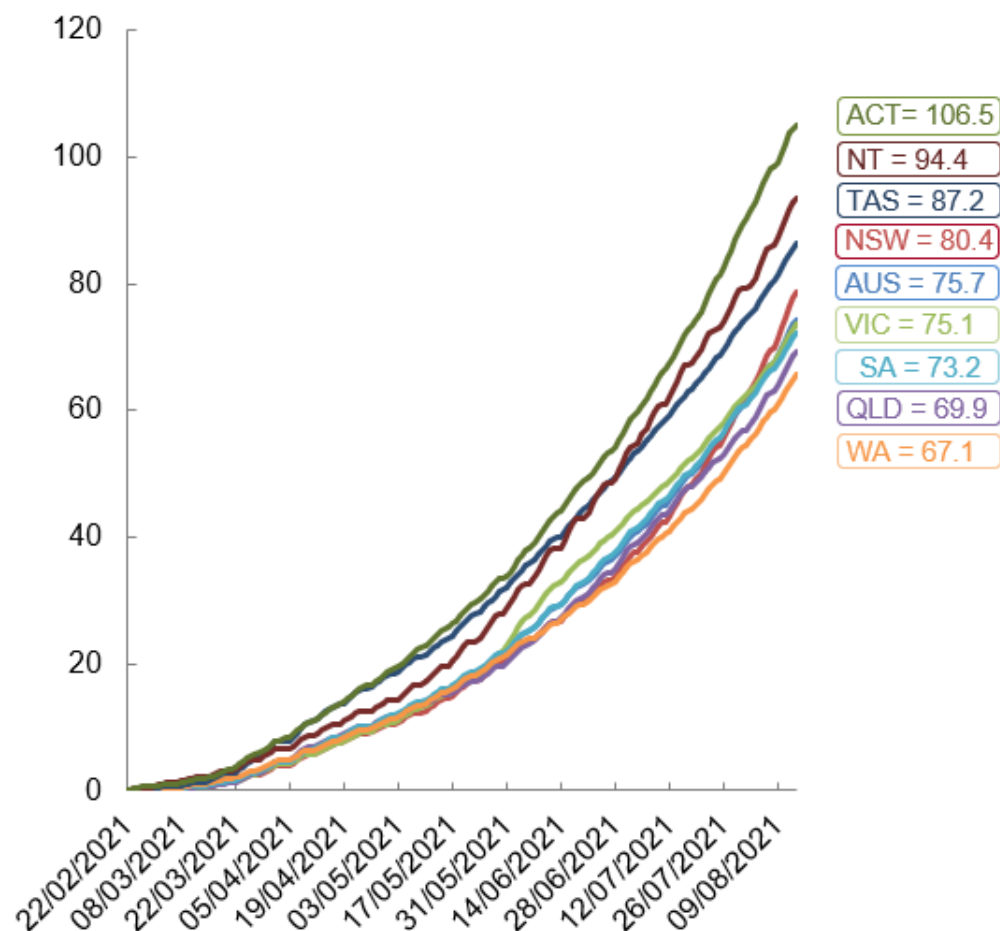
	AUS	ACT	NSW	NT	QLD	SA	TAS	VIC	WA
16 and over - dose 1	10,051,748	188,473	3,480,823	92,034	1,789,060	673,854	236,769	2,601,959	903,289
16 and over - dose 2	5,542,237	107,593	1,826,165	58,556	1,035,432	379,539	145,662	1,442,497	503,484
16 and over - population	20,619,959*	344,037	6,565,651	190,571	4,112,707	1,440,400	440,172	5,407,574	2,114,978
16 and over % with dose 1	48.75%	54.78%	53.02%	48.29%	43.50%	46.78%	53.79%	48.12%	42.71%
16 and over % with dose 2	26.88%	31.27%	27.81%	30.73%	25.18%	26.35%	33.09%	26.68%	23.81%
50 and over - dose 1	6,337,417	109,864	2,089,546	39,984	1,200,197	464,679	164,169	1,632,921	596,635
50 and over - dose 2	3,409,075	59,299	1,147,837	24,083	671,470	236,718	95,893	827,029	326,401
50 and over - population	8,749,703	127,802	2,807,793	62,280	1,758,855	674,384	220,036	2,211,211	885,370
50 and over % with dose 1	72.43%	85.96%	74.42%	64.20%	68.24%	68.90%	74.61%	73.85%	67.39%
50 and over % with dose 2	38.96%	46.40%	40.88%	38.67%	38.18%	35.10%	43.58%	37.40%	36.87%
70 and over - dose 1	2,449,960	38,128	816,575	9,134	475,383	194,478	65,999	608,636	223,569
70 and over - dose 2	1,557,003	26,334	518,498	6,324	311,330	115,948	45,223	377,833	143,683
70 and over - population	2,934,706	39,946	962,606	12,343	577,767	240,514	77,155	743,519	280,281
70 and over % with dose 1	83.48%	95.45%	84.83%	74.00%	82.28%	80.86%	85.54%	81.86%	79.77%
70 and over % with dose 2	53.05%	65.92%	53.86%	51.24%	53.89%	48.21%	58.61%	50.82%	51.26%

\*National population will not equal sum of listed jurisdictions due to a small number of people counted in national population residing in some 'other' territories

Doses sourced from Australian Immunisation Register, population from ABS ERP June 2020

# Vaccinations by location

Cumulative total doses administered vs state populations\*

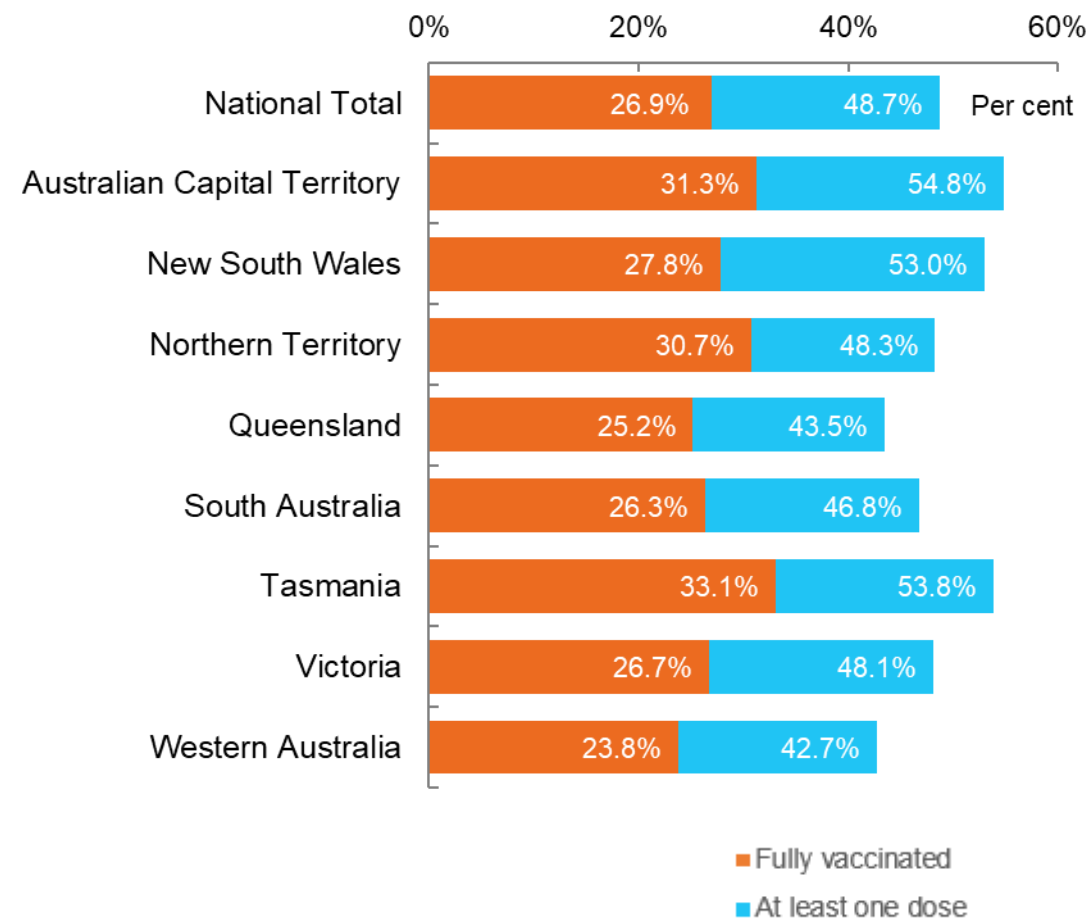


\*Not an indication of percentage vaccinated, numbers will exceed 100 due to multiple doses required per person of the population

Data as at:  
16 Aug 2021

Australia's COVID-19  
Vaccine Roadmap

First and Second Doses by state of residence



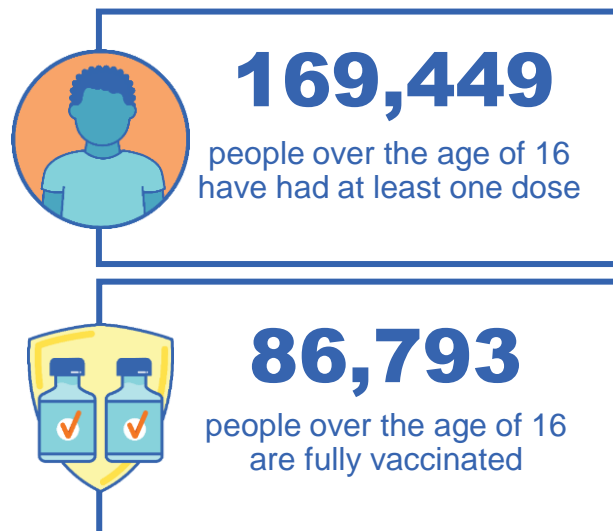


# Aboriginal and Torres Strait Islander peoples

## Number of people vaccinated

Data as at:  
15 Aug 2021  
Updated weekly

Australia's COVID-19  
Vaccine Roadmap



### 160 Aboriginal community controlled health services (ACCHS)

0#	45	24	38	11	3	21	18
ACT	NSW	NT	QLD	SA	TAS	VIC	WA
	<b>NSW</b> <b>49,368</b> at least one dose <b>22,762</b> fully vaccinated	<b>VIC</b> <b>40,185</b> at least one dose <b>21,117</b> fully vaccinated	<b>QLD</b> <b>34,989</b> at least one dose <b>18,624</b> fully vaccinated	<b>WA</b> <b>10,321</b> at least one dose <b>4,904</b> fully vaccinated			
	<b>TAS</b> <b>6,067</b> at least one dose <b>3,843</b> fully vaccinated	<b>SA</b> <b>6,309</b> at least one dose <b>3,397</b> fully vaccinated	<b>ACT</b> <b>2,185</b> at least one dose <b>1,278</b> fully vaccinated	<b>NT</b> <b>15,965</b> at least one dose <b>8,946</b> fully vaccinated			

**4,060** people with at least one dose  
**1,922** people fully vaccinated

residing in other territories or with missing residential information  
Source: Australian Immunisation Register

\*Identifying as Aboriginal and Torres Strait Islander is optional and the estimated population may be under reported.

\*\*Includes all Aboriginal and Torres Strait Islander peoples who have received a vaccination, not limited to those administered in an ACCHS setting

\*\*\*Updated weekly

#ACCHS in the ACT are currently operating as a Commonwealth Vaccine Clinics so not included to avoid double counting



## Commonwealth primary care



### Primary care vaccine administration sites

<b>5,250</b>	<b>136</b>	<b>160</b>	<b>2,479</b>
GPs	CVCs	ACCHS	Pharmacies

### Primary care vaccinations by provider type

	Doses administered	Daily increase	7 day increase
General Practice*	8,337,456	157,768	894,361
Pharmacy	109,253	14,587	66,206

\*General practice includes Commonwealth Vaccination Clinics, Aboriginal Community Health Centres, Royal Flying Doctor Service and other Commonwealth vaccination facilities

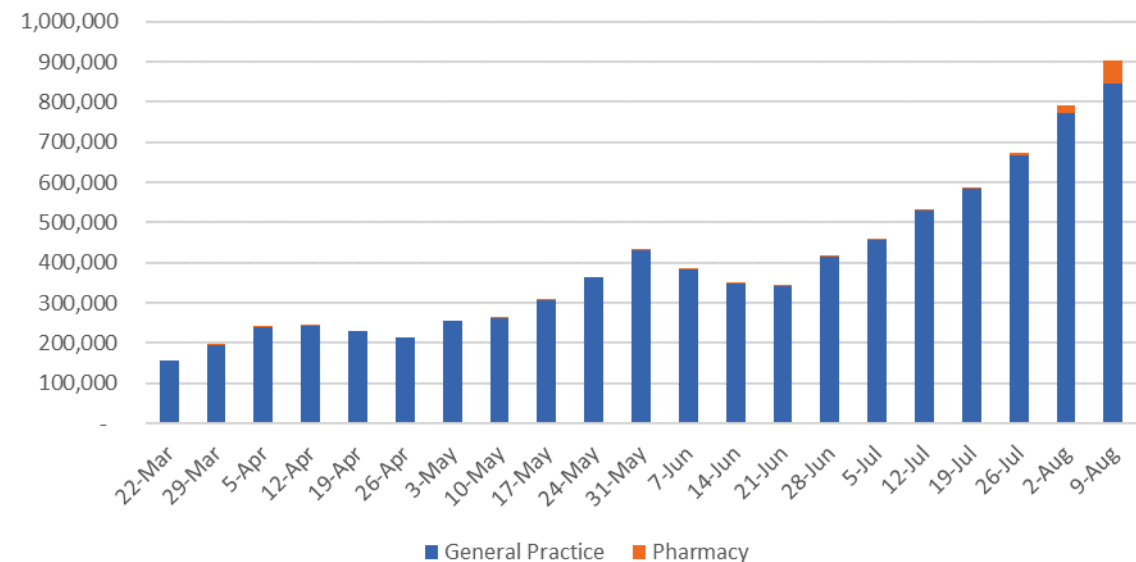
Data as at:  
16 Aug 2021

Australia's COVID-19  
Vaccine Roadmap



**8,446,709** total vaccine doses  
administered primary care settings as at 15 August  
**+172,355** recorded in the last 24 hours

### Primary Care weekly vaccines administered



Source: Australian Immunisation Register

Data as at:  
16 Aug 2021

# Commonwealth aged care and disability doses administered



People vaccinated in aged care  
and residential disability facilities

**389,958**

People with a first dose

**274,938**

People fully vaccinated

Residential aged care  
facilities

**2,569**

Sites visited for first doses

**2,568**

Sites visited for second doses



**665,883**

(+4,922 last 24 hours)

Total vaccine doses administered in aged care  
and disability facilities as at 16 August

Number of doses administered as part of the Commonwealth aged and disability care rollout

**NSW**  
**285,273**

(+3,351 last  
24 hours)

**VIC**  
**137,642**

(+256 last  
24 hours)

**QLD**  
**101,404**

(+466 last  
24 hours)

**WA**  
**49,956**

(+458 last  
24 hours)

**TAS**  
**14,569**

(+7 last  
24 hours)

**SA**  
**45,131**

(+282 last  
24 hours)

**ACT**  
**8,244**

(+3 last  
24 hours)

**NT**  
**4,371**

(-1 last  
24 hours)

**19,293**

doses administered to persons  
residing in other territories or with  
missing residential information

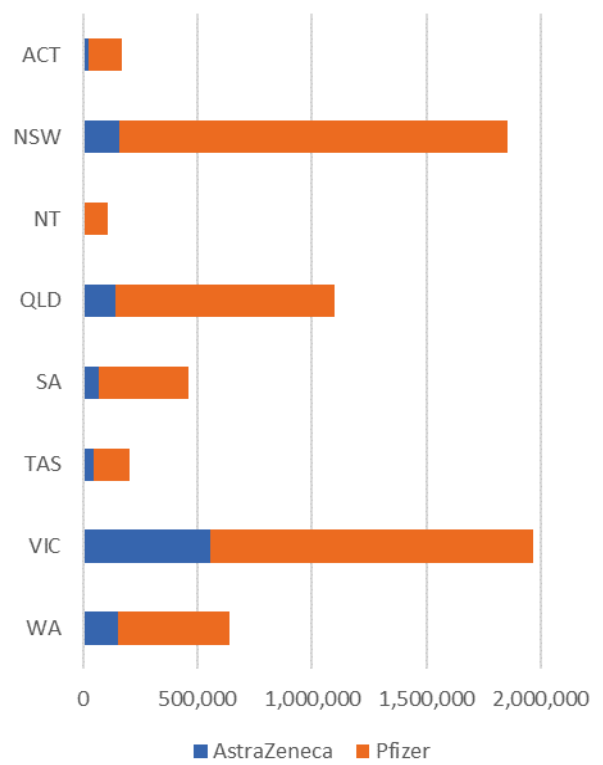
\*Sourced from the Australian Immunisation Register. Includes all persons vaccinated at participating residential aged care, disability and related industry settings.

\*\*State level breakdown indicates the residential location and may not align to the state in which the vaccination occurred.

Data as at:  
16 Aug 2021

# Jurisdiction administered

Total vaccine doses administered in State and Territory clinics as at 16 August



**6,505,799** total vaccine doses administered  
in State and Territory clinics as at 16 August  
+ **102,188** recorded in the last 24 hours  
+ **617,815** recorded in the last 7 days

**NSW**  
**1,855,820**  
(+26,611 daily increase)

**VIC**  
**1,967,053**  
(+45,520 daily increase)

**QLD**  
**1,098,347**  
(+6,706 daily increase)

**WA**  
**641,450**  
(+12,210 daily increase)

**TAS**  
**203,008**  
(+1,577 daily increase)

**SA**  
**462,293**  
(+6,409 daily increase)

**ACT**  
**169,120**  
(+2,086 daily increase)

**NT**  
**108,708**  
(+1,069 daily increase)

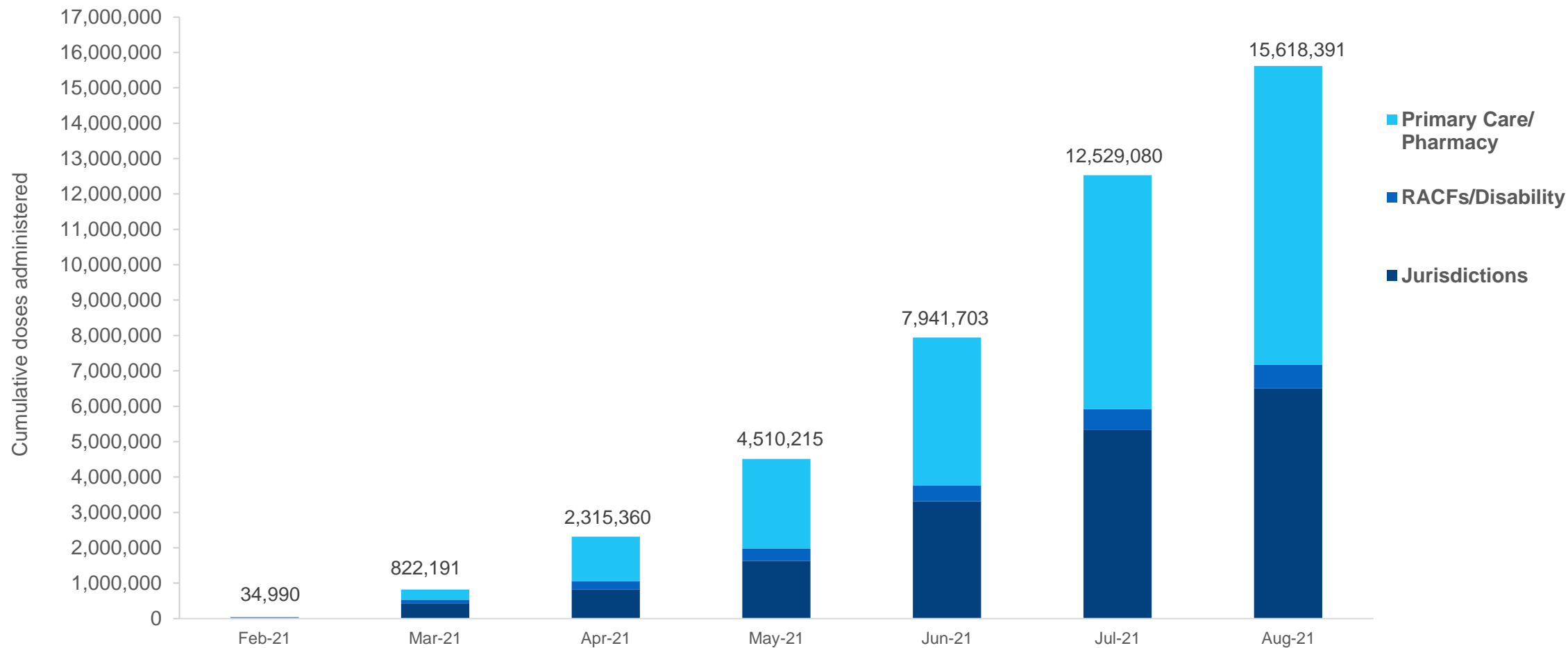
\*Sourced from the Australian Immunisation Register and self-reported data. Numbers are calculated as difference in daily cumulative reported numbers to allow for historical corrections in all self-reported data sources.

Source: Australian Immunisation Register

# Cumulative doses administered by channel

Data as at:  
16 Aug 2021

Cumulative doses administered: **15,618,391**



Source: Australian Immunisation Register

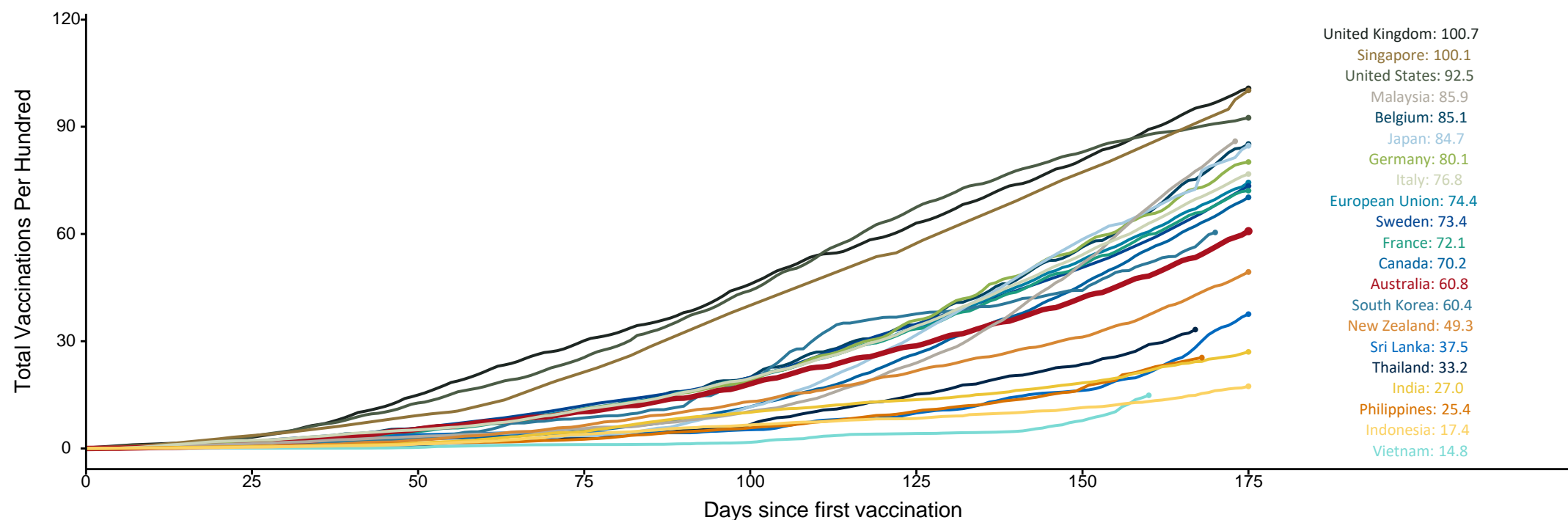
# International data - doses at equivalent stages of rollout (Day 175)

Data as at:  
16 Aug 2021

Australia's COVID-19  
Vaccine Roadmap

Cumulative doses administered (16 Aug): **15,618,391**

The x-axis is truncated at the length of Australia's vaccination program. Countries with intermittent reporting have had their doses per 100 imputed to Australia's current stage of rollout. Israel excluded as it is beyond scale of the graph



Source: Department of Health (Australia), Our World in Data (international)  
Latest data: 16 August

Data as at midnight:  
16 Aug 2021

# Pandemic Response Payments



**1.42 million**

People have received at least one  
COVID Disaster Payment (including ISP200)

**2.30 million**

Claims granted across three different payments

**\$3.02 billion**

Paid Out as at 16 Aug 2021



Claims Received Digitally

**91%**

1.49m claims finalised by  
Digital Enabled Processing

**Three payments available:**

**COVID Disaster Payment**  
assisting during a lockdown event  
in a Commonwealth hotspot.

**Income Support Payment \$200**  
for income support recipients who lost at  
least 8 hours of work.

**Pandemic Leave Disaster Payment**  
for those who have to self-isolate,  
quarantine or care.

For more information visit:  
[www.servicesaustralia.gov.au](http://www.servicesaustralia.gov.au)



**COVID Disaster Payment:**

2.40 million claims received - 1.34 million individuals paid a total of \$2.93 billion.

**\$200 Income Support Payment:**

102,000 claims received - 84,000 individuals paid a total of \$35.91 million.

**Pandemic Leave Disaster Payment:**

40,000 claims received - 34,000 individuals paid a total of \$53.21 million.

## COVID-19 DISASTER PAYMENTS

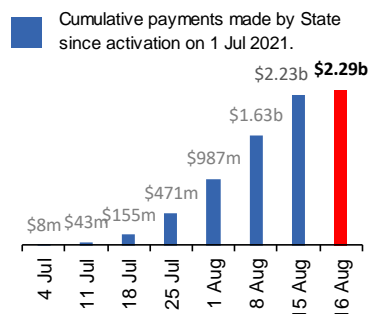
### New South Wales

Active lockdown since 24 Jun

**804,000 have received at  
least one COVID Disaster  
Payment.**

**\$2.29b paid out as at 16 Aug.**

**\$607m paid in initial and  
reoccurring payments in the  
week ending 15 Aug.**



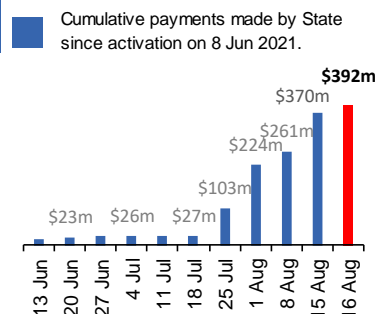
### Victoria

Active lockdown (#6) since 6 Aug

**294,000 have received at  
least one COVID Disaster  
Payment.**

**\$392m paid out as at 16 Aug.**

**\$109m paid in initial and  
reoccurring payments in the  
week ending 15 Aug.**



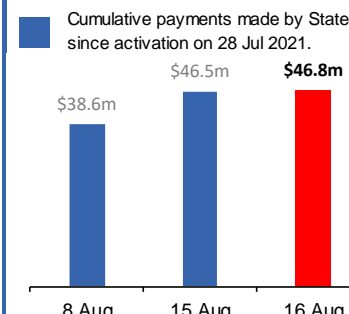
### South Australia

Lockdown from 21 – 27 Jul  
Claiming period ends 17 Aug

**83,000 have received at least  
one COVID Disaster Payment.**

**\$46.8m paid out as at 16 Aug.**

**\$6m paid in initial payments  
in the week ending 15 Aug.**



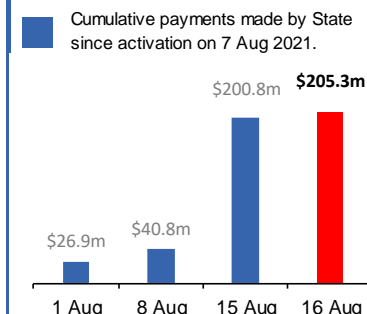
### Queensland

Lockdown from 31 Jul – 11 Aug  
Claiming period ends 28 Aug

**157,000 have received at  
least one COVID Disaster  
Payment.**

**\$205m paid out as at 16 Aug.**

**\$164m paid in initial  
payments in the week ending  
15 Aug.**



# Administration and Utilisation

## Doses as at Week 25

	Ordered (including coming week)	Available (delivered weeks 1-24, until 8 August)	Administered (weeks 1-25 until 15 August)	Available minus Administered	Estimated Dose Utilisation % (see note)
NSW	2,365,150	1,966,780	1,829,257	137,523	Fully utilised
VIC	2,328,330	2,129,320	1,921,776	207,544	Fully utilised
QLD	1,412,230	1,230,200	1,091,838	138,362	99%
WA	787,168	745,078	629,270	115,808	94%
SA	595,480	531,380	455,893	75,487	96%
TAS	236,530	214,640	201,438	13,202	Fully utilised
NT	157,704	137,108	107,669	29,439	89%
ACT	192,788	178,748	167,094	11,654	Fully utilised
Jurisdiction delivered total	8,075,380	7,133,254	6,404,235	729,019	Fully utilised
Commonwealth Aged Care & Disability	720,508	694,462	661,052	33,410	N/A
Commonwealth Primary Care	11,855,920	10,405,416	8,189,943	2,215,473	89%
Total	20,651,808	18,233,132	15,255,230	2,977,902	94%

### About this data

- Ordered – Total doses delivered to sites. Based on logistics provider data. This figure includes doses allocated for administration in the coming week.
- Available – total doses that could have been administered to date, less doses re-distributed from States & Territories to Primary Care or Aged Care & Disability (i.e. does not include those deliveries recently received, and intended for use in the coming week).
- Administered – Doses administered as at 15 August 2021.
- The dose utilisation is calculated based on the total doses administered and a small % wastage in line with international standards in relation to total available doses.
- For Aged Care & Disability, the doses available for administration is for the full period (Weeks 1-25).
- Aged Care & Disability utilisation is not provided as the in-reach rollout is demand-based, with vaccines ordered based on resident numbers.