



**Australian Government**  
**Operation COVID Shield**

# COVID-19 Vaccine Roll-out

16 August 2021

Data as at:  
15 Aug 2021

## Total vaccine doses



**15,338,926** total vaccine doses administered nationally as at 15 August  
**+ 94,497** recorded in the last 24 hours



**9,905,472**

people have had at least one dose

**48.0%**

of people over the age of 16 have had at least one dose



**5,409,686**

people are fully vaccinated

**26.2%**

of people over the age of 16 are fully vaccinated

**NSW**  
**5,170,324**  
(+47,864 daily increase)

**VIC**  
**3,981,941**  
(+9,993 daily increase)

**QLD**  
**2,837,758**  
(+16,717 daily increase)

**WA**  
**1,394,495**  
(+11,298 daily increase)

**TAS**  
**379,599**  
(+2,115 daily increase)

**SA**  
**1,040,250**  
(+5,015 daily increase)

**ACT**  
**356,518**  
(+1,031 daily increase)

**NT**  
**178,041**  
(+ 464 daily increase)

\*Administration state breakdown indicates state in which a vaccine was administered  
\*\*Overall dose count includes instances of more than two doses per person in a small number of cases.

Data as at:  
15 Aug 2021

**125,374**  
doses administered  
to persons residing  
in other territories or  
with missing  
residential  
information

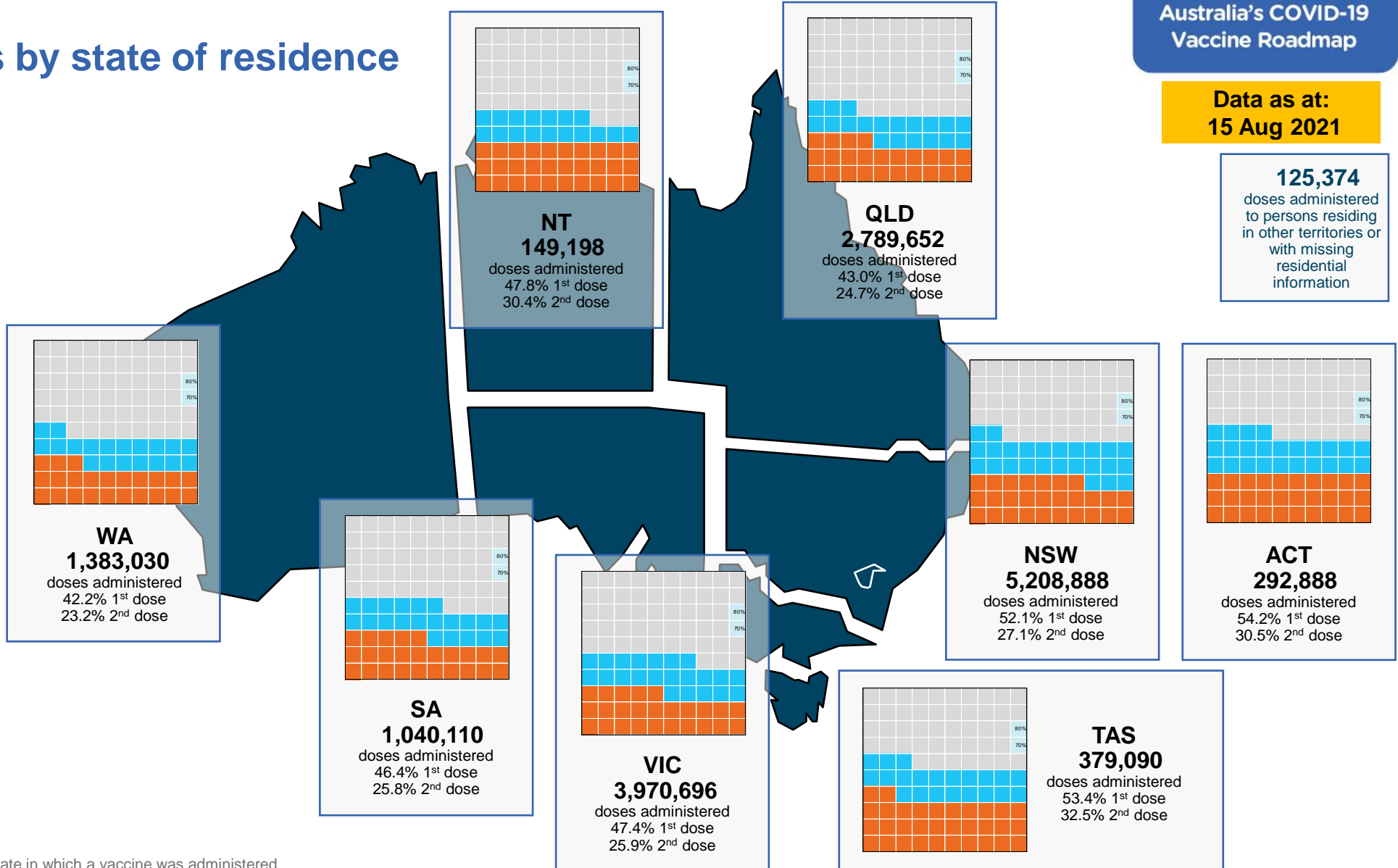
## Vaccinations by state of residence

### First doses

Age Today	4 weeks ago	8 weeks ago
16+	48.0%	35.8%
50+	71.9%	60.2%
70+	83.2%	76.0%

### Fully vaccinated

Age Today	4 weeks ago	8 weeks ago
16+	26.2%	14.1%
50+	37.9%	18.5%
70+	52.2%	31.6%



\*Residential state may differ from the state in which a vaccine was administered

## Commonwealth and Jurisdiction vaccine doses administered

Data as at:  
15 Aug 2021



**15,338,926** total vaccine doses administered nationally as at 15 August

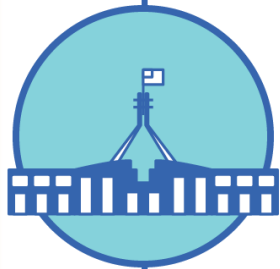
**+ 94,497** recorded in the last 24 hours



**6,403,611**

doses administered by state and territory facilities

**+ 52,755** recorded in the last 24 hours



**8,935,315**

doses administered by commonwealth facilities

**+41,742**

recorded in the last 24 hours

**8,274,354** total vaccine doses administered in primary care settings

**660,961** total vaccine doses administered in aged care and disability settings

NSW	Jurisdictions	Commonwealth
Cumulative	1,829,209	3,341,115
Daily increase	26,785	21,079

VIC	Jurisdictions	Commonwealth
Cumulative	1,921,533	2,060,408
Daily increase	736	9,257

QLD	Jurisdictions	Commonwealth
Cumulative	1,091,641	1,746,117
Daily increase	11,686	5,031

WA	Jurisdictions	Commonwealth
Cumulative	629,240	765,255
Daily increase	7,644	3,654

TAS	Jurisdictions	Commonwealth
Cumulative	201,431	178,168
Daily increase	1,714	401

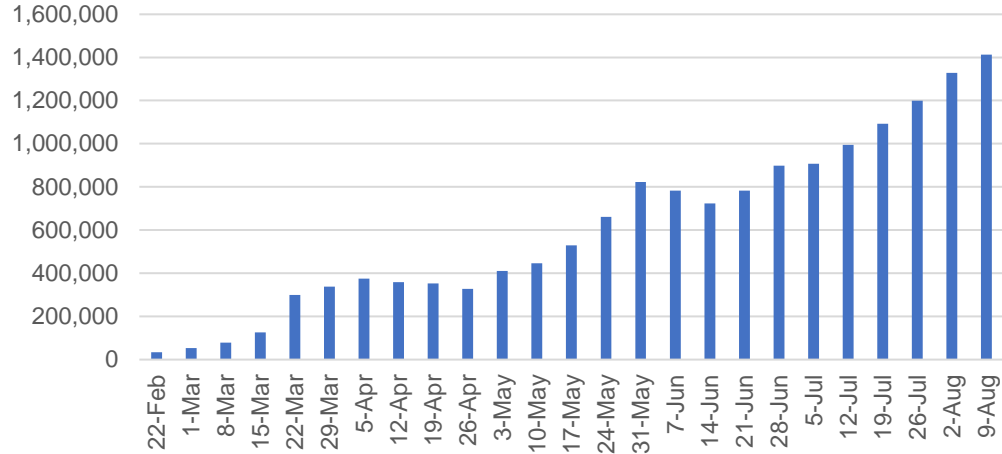
SA	Jurisdictions	Commonwealth
Cumulative	455,884	584,366
Daily increase	3,707	1,308

ACT	Jurisdictions	Commonwealth
Cumulative	167,034	189,484
Daily increase	22	1,009

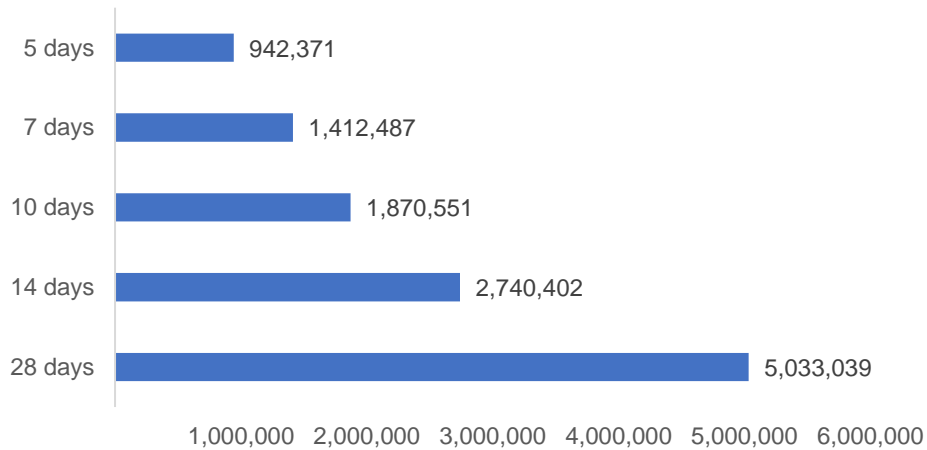
NT	Jurisdictions	Commonwealth
Cumulative	107,639	70,402
Daily increase	461	3

# Vaccine milestone charts

Jabs in arms by week



Doses administered by the most recent periods

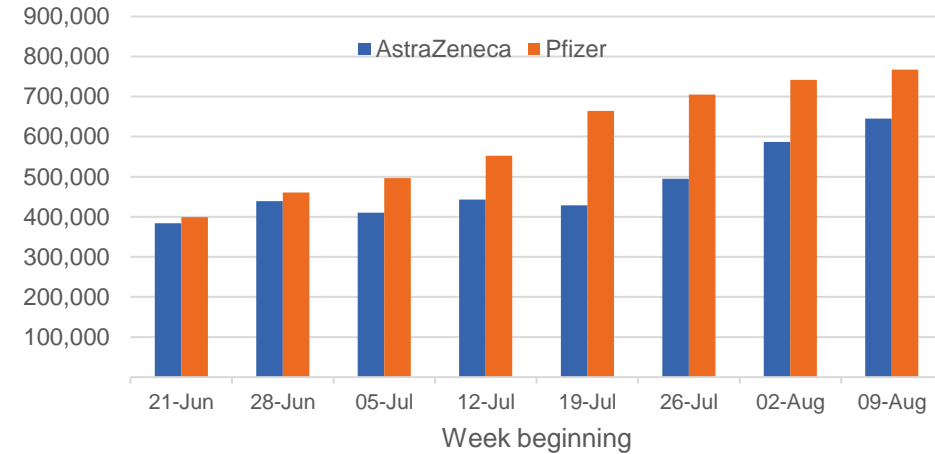


\*Dates used are relevant to administration date and associated volumes will change as data matures. Recent days are understated.  
 \*\*Sourced from the Australian Immunisation Register. Recent days may be understated.

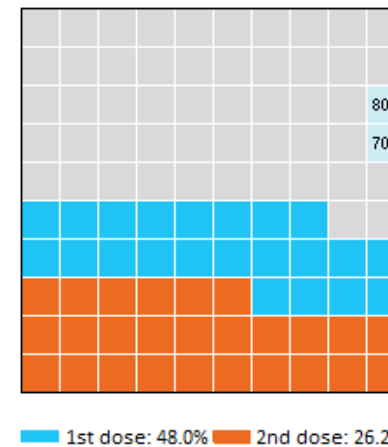
Data as at:  
15 Aug 2021

Australia's COVID-19  
Vaccine Roadmap

Doses by administration week and vaccine type



Eligible population percentage coverage



1st dose: 48.0% 2nd dose: 26.2%

\*Each square represents 1% of the national population. Squares are filled as milestones are achieved.

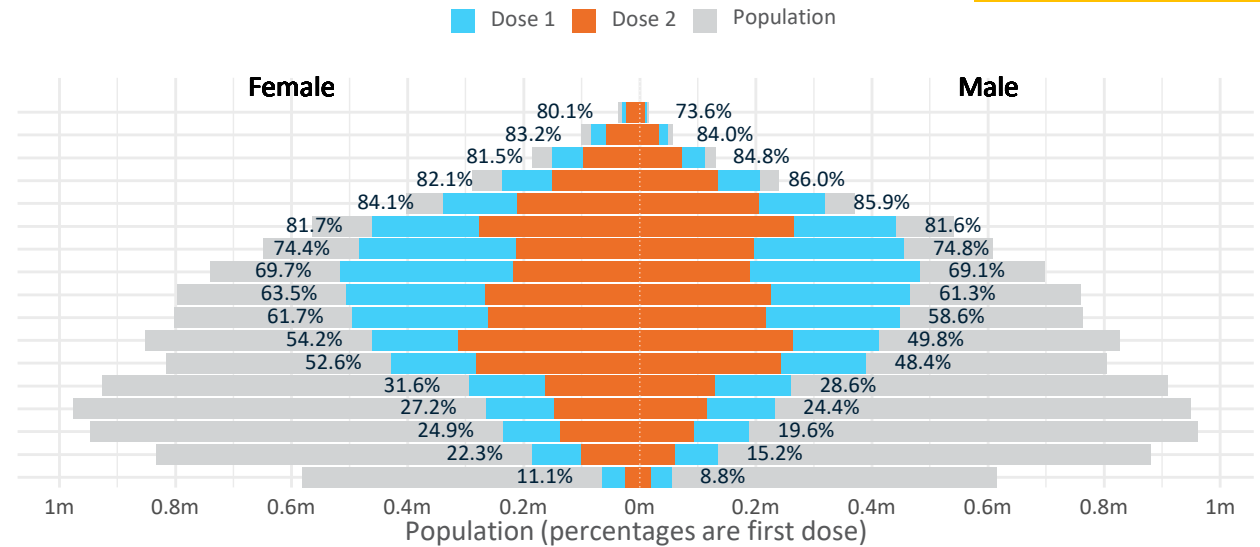
Data as at: 15 Aug 2021

# Doses by age and sex

First and second doses by age and sex, using ABS age brackets

	AUS	16+	50+	70+
Dose 1	48.04% (9,905,472 doses / 20,619,959 people)	71.91% (6,291,769 doses / 8,749,703 people)	83.16% (2,440,604 doses / 2,934,706 people)	
Dose 2	26.24% (5,409,686 doses / 20,619,959 people)	37.92% (3,318,219 doses / 8,749,703 people)	52.24% (1,533,160 doses / 2,934,706 people)	

Age	Dose 1	Dose 2
95+	41,465 (78.4%)	30,403 (57.5%)
90-94	132,435 (83.6%)	90,634 (57.2%)
85-89	262,283 (83.0%)	169,381 (53.6%)
80-84	443,480 (83.9%)	284,555 (53.8%)
75-79	657,691 (85.0%)	416,120 (53.8%)
70-74	903,250 (81.7%)	542,067 (49.1%)
65-69	939,638 (74.7%)	408,632 (32.5%)
60-64	997,980 (69.5%)	406,664 (28.3%)
55-59	971,554 (62.5%)	492,925 (31.7%)
50-54	941,993 (60.2%)	476,838 (30.5%)
45-49	873,535 (52.1%)	577,362 (34.4%)
40-44	819,029 (50.6%)	523,275 (32.3%)
35-39	554,758 (30.2%)	292,594 (15.9%)
30-34	499,471 (26.0%)	264,252 (13.7%)
25-29	427,045 (22.4%)	229,762 (12.1%)
20-24	320,965 (18.7%)	161,644 (9.4%)
16-19	118,900 (9.9%)	42,578 (3.6%)



DOH (Australian Immunisation Register), ABS (Population)

	AUS	ACT	NSW	NT	QLD	SA	TAS	VIC	WA
16 and over - dose 1	9,905,472	186,398	3,417,891	91,020	1,769,610	667,989	234,964	2,563,162	891,740
16 and over - dose 2	5,409,686	104,819	1,781,578	57,890	1,016,058	371,099	143,169	1,402,833	489,732
16 and over - population	20,619,959*	344,037	6,565,651	190,571	4,112,707	1,440,400	440,172	5,407,574	2,114,978
16 and over % with dose 1	48.04%	54.18%	52.06%	47.76%	43.03%	46.38%	53.38%	47.40%	42.16%
16 and over % with dose 2	26.24%	30.47%	27.13%	30.38%	24.71%	25.76%	32.53%	25.94%	23.16%
50 and over - dose 1	6,291,769	109,278	2,070,363	39,727	1,192,518	462,047	163,445	1,622,697	592,751
50 and over - dose 2	3,318,219	57,641	1,118,814	23,722	656,876	230,689	94,162	799,675	316,681
50 and over - population	8,749,703	127,802	2,807,793	62,280	1,758,855	674,384	220,036	2,211,211	885,370
50 and over % with dose 1	71.91%	85.51%	73.74%	63.79%	67.80%	68.51%	74.28%	73.38%	66.95%
50 and over % with dose 2	37.92%	45.10%	39.85%	38.09%	37.35%	34.21%	42.79%	36.16%	35.77%
70 and over - dose 1	2,440,604	38,002	812,386	9,109	473,852	193,844	65,823	606,777	222,842
70 and over - dose 2	1,533,160	26,023	510,248	6,269	306,972	114,146	44,740	371,902	141,145
70 and over - population	2,934,706	39,946	962,606	12,343	577,767	240,514	77,155	743,519	280,281
70 and over % with dose 1	83.16%	95.13%	84.39%	73.80%	82.01%	80.60%	85.31%	81.61%	79.51%
70 and over % with dose 2	52.24%	65.15%	53.01%	50.79%	53.13%	47.46%	57.99%	50.02%	50.36%

\*National population will not equal sum of listed jurisdictions due to a small number of people counted in national population residing in some 'other' territories

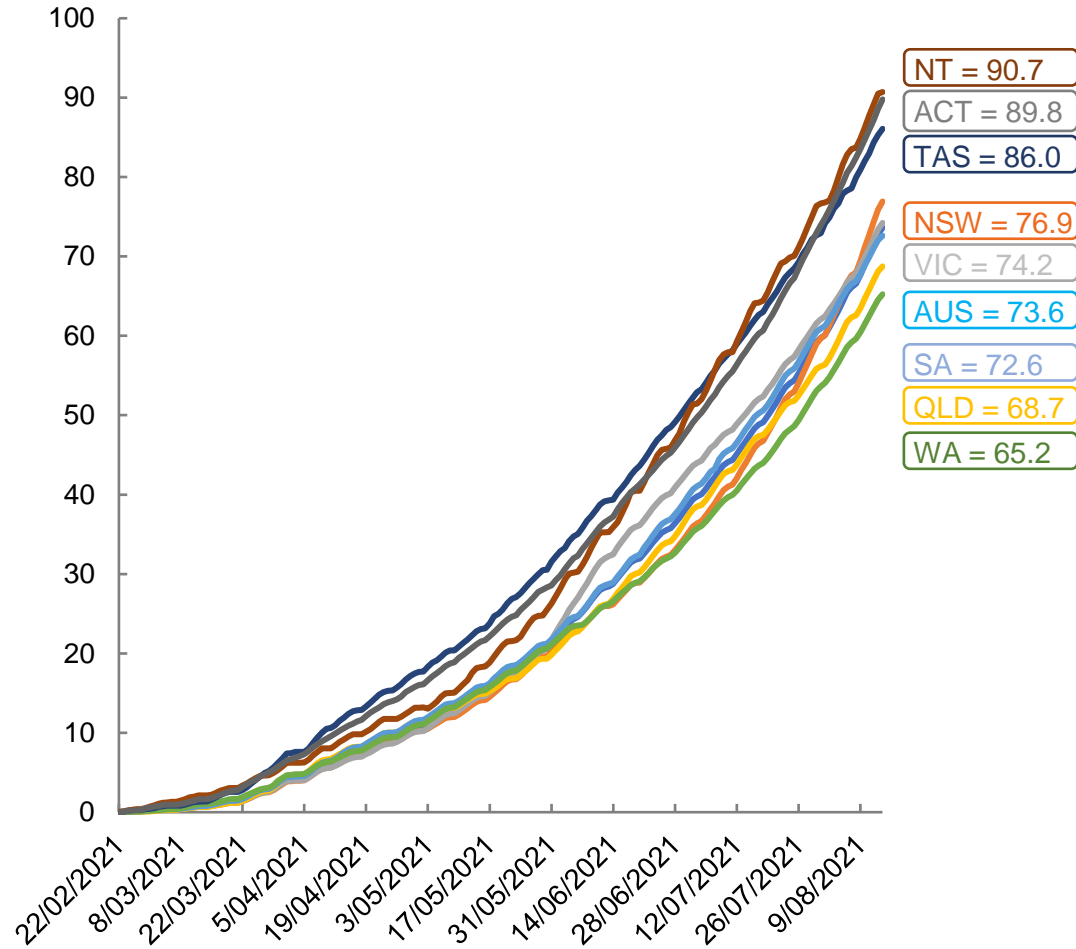
Doses sourced from Australian Immunisation Register, population from ABS ERP June 2020

# Vaccinations by residential location

Data as at:  
15 Aug 2021

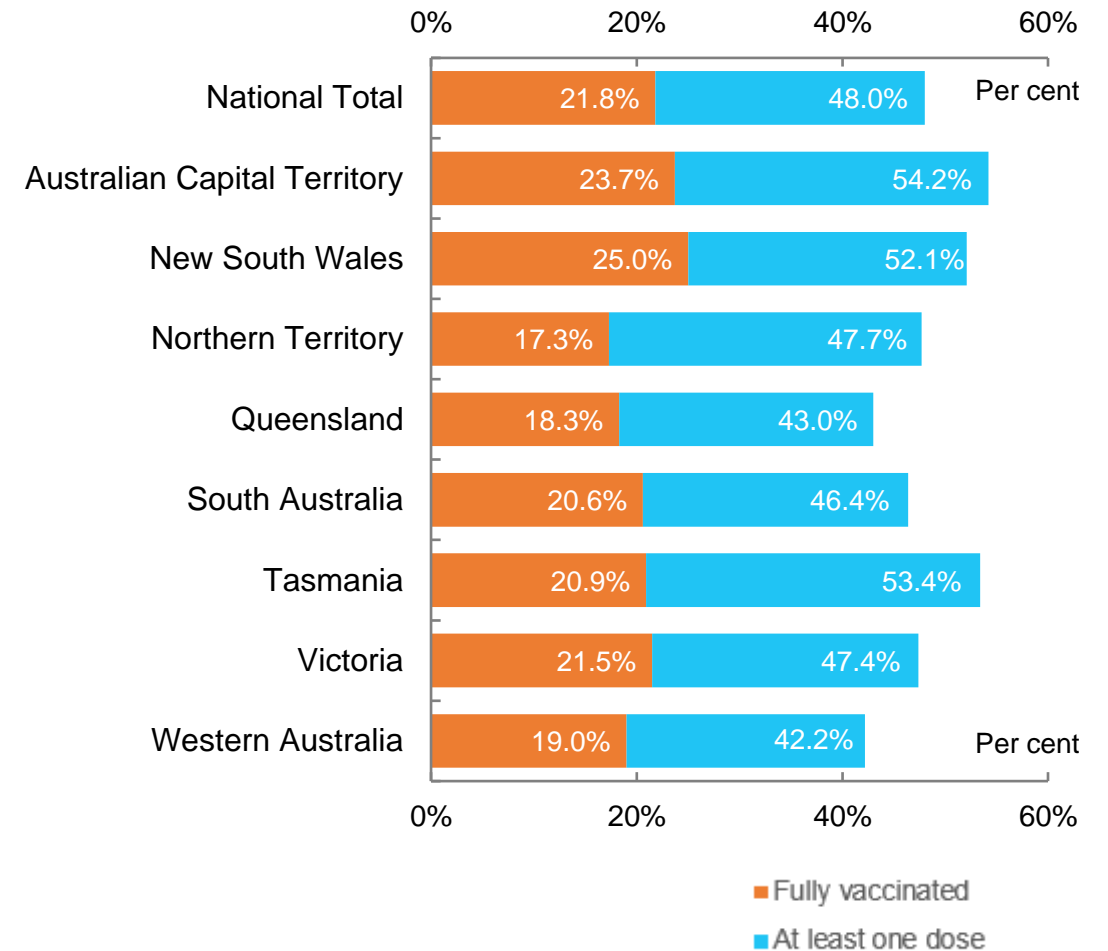
Australia's COVID-19  
Vaccine Roadmap

Cumulative total doses administered vs state populations\*



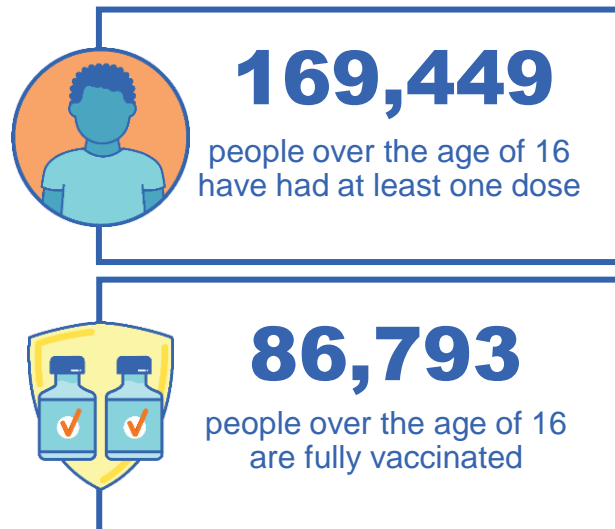
\*Not an indication of percentage vaccinated, numbers will exceed 100 due to multiple doses required per person of the population

First and Second Doses by state of residence



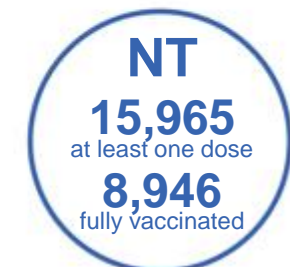
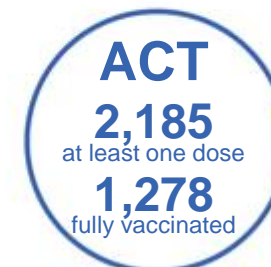
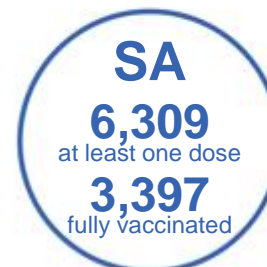
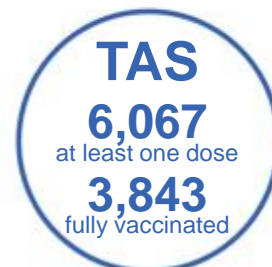
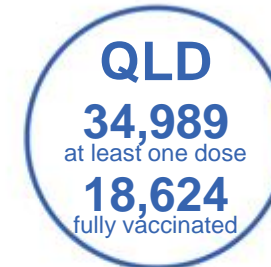
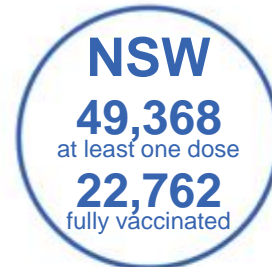
Data as at:  
15 Aug 2021

## Aboriginal and Torres Strait Islander peoples Number of people vaccinated



### 160 Aboriginal community controlled health services (ACCHS)

0#	45	24	38	11	3	21	18
ACT	NSW	NT	QLD	SA	TAS	VIC	WA



**4,060** people with at least one dose  
**1,922** people fully vaccinated

\*Identifying as Aboriginal and Torres Strait Islander is optional and the estimated population may be under reported.

\*\*Includes all Aboriginal and Torres Strait Islander peoples who have received a vaccination, not limited to those administered in an ACCHS setting

#ACCHS in the ACT are currently operating as a Commonwealth Vaccine Clinics so not included to avoid double counting

residing in other territories or with missing residential information

Source: Australian Immunisation Register



Data as at: 15 Aug 2021

## Commonwealth primary care



### Primary care vaccine administration sites

<b>5,250</b>	<b>136</b>	<b>160</b>	<b>2,479</b>
GPs	CVCs	ACCHS	Pharmacies

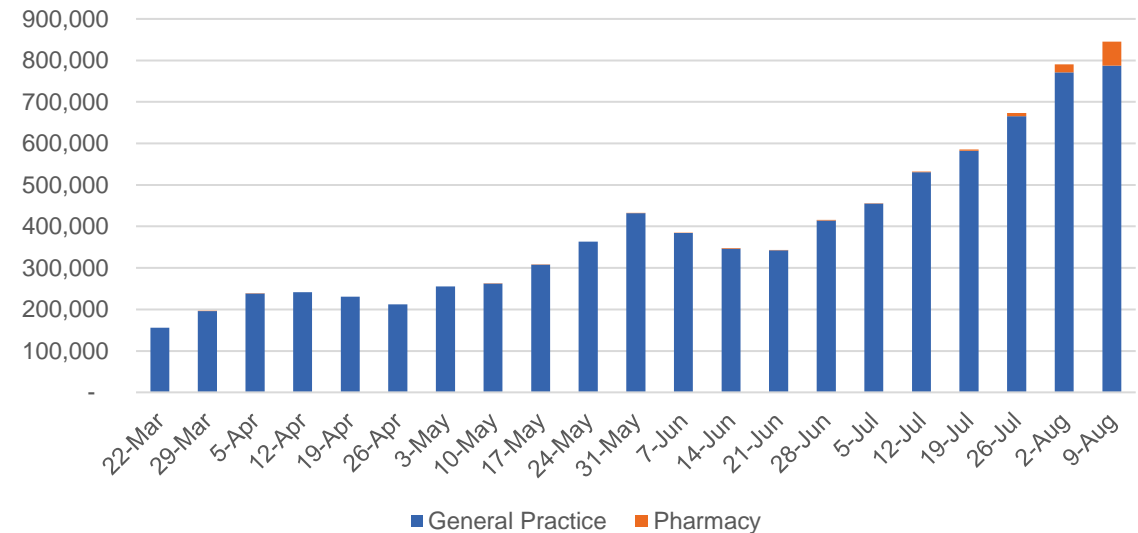


**8,274,354** total vaccine doses administered primary care settings as at 15 August  
 + **39,563** recorded in the last 24 hours

### Primary care vaccinations by provider type

	Doses administered	Daily increase	7 day increase
General Practice*	8,179,688	36,386	1,017,927
Pharmacy	94,666	3,177	59,396

### Primary Care weekly vaccines administered



\*General practice includes Commonwealth Vaccination Clinics, Aboriginal Community Health Centres, Royal Flying Doctor Service and other Commonwealth vaccination facilities

# Commonwealth aged care and disability doses administered

Data as at:  
15 Aug 2021



People vaccinated in aged care  
and residential disability facilities

**387,213**

People with a first dose

**272,759**

People fully vaccinated

Residential aged care  
facilities

**2,568**

Sites visited for first doses

**2,567**

Sites visited for second doses



**660,961** (+ 2,179 last 24 hours)

Total vaccine doses administered in aged care  
and disability facilities as at 14 August

Number of doses administered as part of the Commonwealth aged and disability care rollout

**NSW**  
**281,922**  
(+890 last  
24 hours)

**VIC**  
**137,386**  
(+379 last  
24 hours)

**QLD**  
**100,938**  
(+351 last  
24 hours)

**WA**  
**49,498**  
(+342 last  
24 hours)

**TAS**  
**14,562**  
(+11 last  
24 hours)

**SA**  
**44,849**  
(+180 last  
24 hours)

**ACT**  
**8,241**  
(+3 last  
24 hours)

**NT**  
**4,372**  
(+3 last  
24 hours)

**19,193** doses administered to persons  
residing in other territories or with  
missing residential information

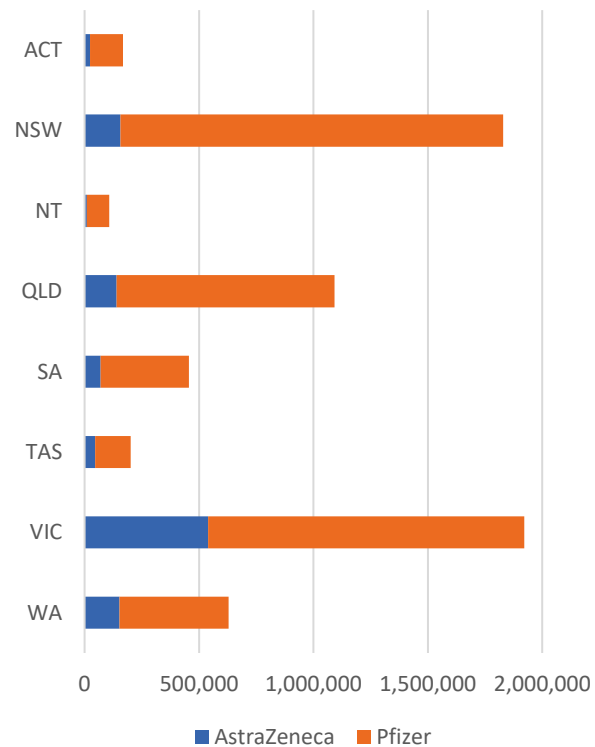
\*Sourced from the Australian Immunisation Register. Includes all persons vaccinated at participating residential aged care, disability and related industry settings.

\*\*State level breakdown indicates the residential location and may not align to the state in which the vaccination occurred.

Data as at:  
15 Aug 2021

# Jurisdiction administered

Total vaccine doses administered in State and Territory clinics as at 15 August



**6,403,611** total vaccine doses administered in State and Territory clinics as at 15 August  
 + **52,755** recorded in the last 24 hours  
 + **580,234** recorded in the last 7 days

**NSW**  
**1,829,209**  
 (+26,785 daily increase)

**VIC**  
**1,921,533**  
 (+736 daily increase)

**QLD**  
**1,091,641**  
 (+11,686 daily increase)

**WA**  
**629,240**  
 (+7,644 daily increase)

**TAS**  
**201,431**  
 (+1,714 daily increase)

**SA**  
**455,884**  
 (+3,707 daily increase)

**ACT**  
**167,034**  
 (+22 daily increase)

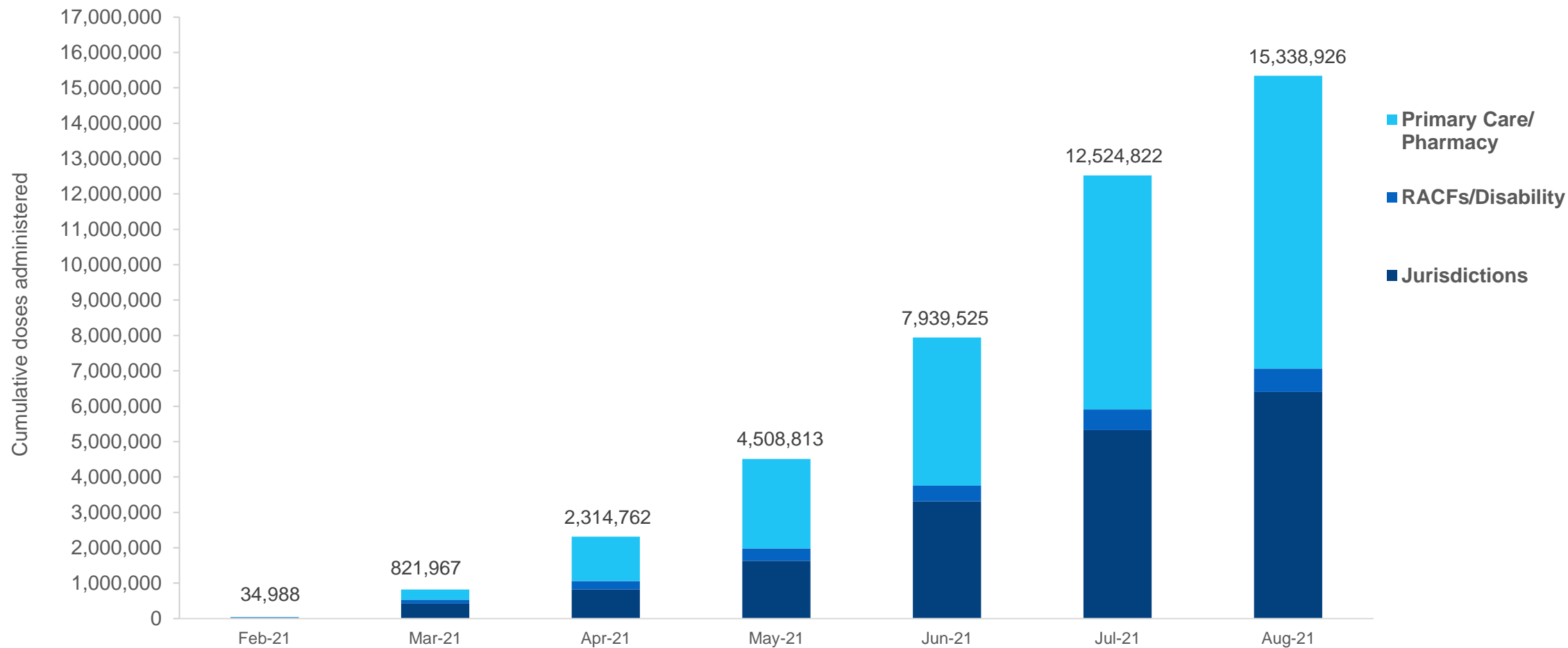
**NT**  
**107,639**  
 (+461 daily increase)

\*Sourced from the Australian Immunisation Register and self-reported data. Numbers are calculated as difference in daily cumulative reported numbers to allow for historical corrections in all self-reported data sources.

# Cumulative doses administered by channel

Data as at:  
15 Aug 2021

Cumulative doses administered: **15,338,926**



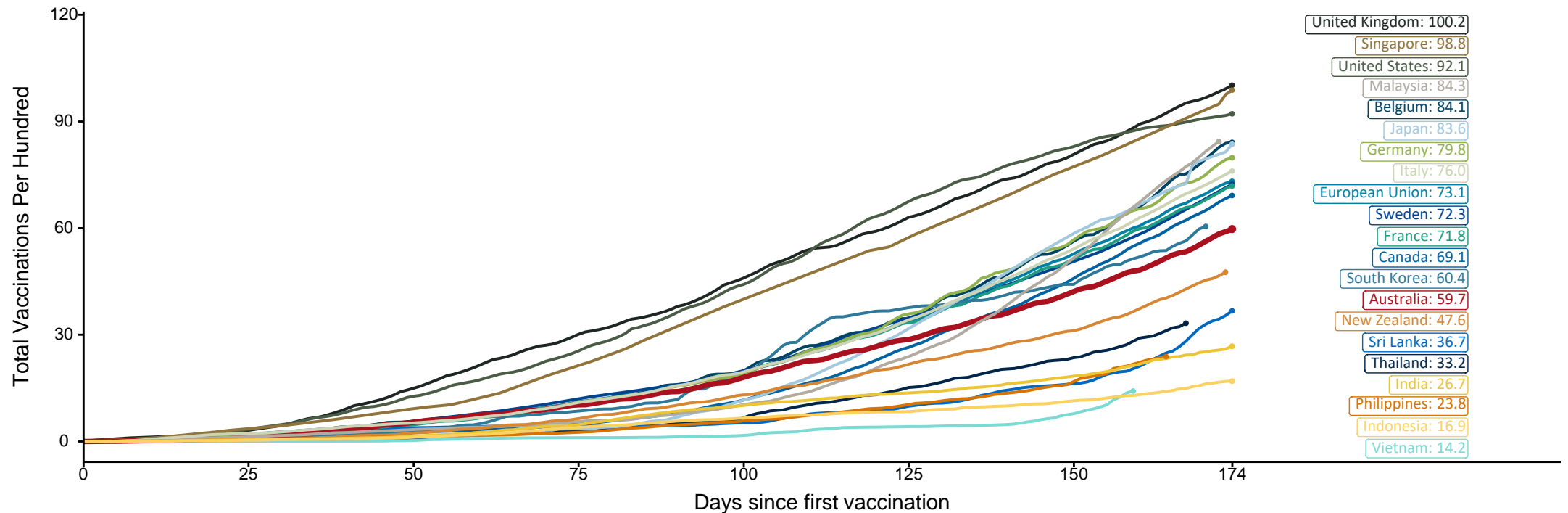
Source: Australian Immunisation Register

# International data - doses at equivalent stages of rollout (Day 174)

Data as at:  
15 Aug 2021

Cumulative doses administered (15 Aug): **15,338,926**

The x-axis is truncated at the length of Australia's vaccination program. Countries with intermittent reporting have had their doses per 100 imputed to Australia's current stage of rollout. Israel excluded as it is beyond scale of the graph



Source: Department of Health (Australia), Our World in Data (international)  
Latest data: 15 August

# Pandemic Response Payments

Data as at midnight:  
15 Aug 2021



**1.39 million**

People have received at least one COVID Disaster Payment (including ISP200)

**2.24 million**

Claims granted across three different payments

**\$2.92 billion**

Paid Out as at 15 Aug 2021



Claims Received Digitally

**91%**

1.45m claims finalised by Digital Enabled Processing

Three payments available:

**COVID Disaster Payment** assisting during a lockdown event in a Commonwealth hotspot.

**Income Support Payment \$200** for income support recipients who lost at least 8 hours of work.

**Pandemic Leave Disaster Payment** for those who have to self-isolate, quarantine or care.

For more information visit:  
[www.servicesaustralia.gov.au](http://www.servicesaustralia.gov.au)



**COVID Disaster Payment:**

2.30 million claims received - 1.32 million individuals paid a total of \$2.86 billion.

**\$200 Income Support Payment:**

90,000 claims received - 75,000 individuals paid a total of \$26.14 million.

**Pandemic Leave Disaster Payment:**

39,000 claims received - 33,000 individuals paid a total of \$52.06 million.

## COVID-19 DISASTER PAYMENTS

### New South Wales

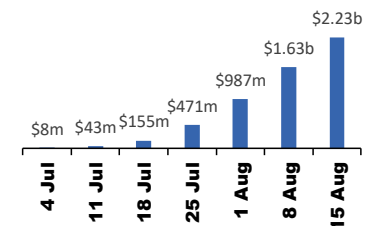
Active lockdown since 24 Jun

**795,000 have received at least one COVID Disaster Payment.**

**\$2.2b paid out as at 15 Aug.**

**\$607m paid in initial and reoccurring payments in the week ending 15 Aug.**

Weekly cumulative payments made by State since activation on 1 Jul 2021.



### Victoria

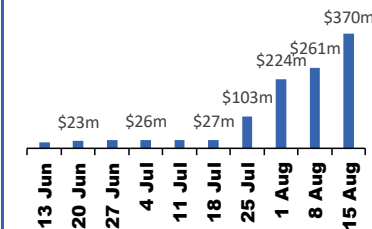
Active lockdown (#6) since 6 Aug

**289,000 have received at least one COVID Disaster Payment.**

**\$370m paid out as at 15 Aug.**

**\$109m paid in initial and reoccurring payments in the week ending 15 Aug.**

Weekly cumulative payments made by State since activation on 8 Jun 2021.



### South Australia

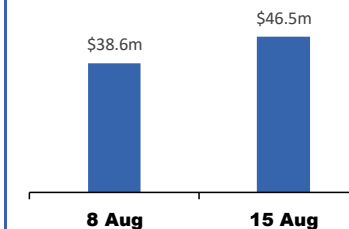
Lockdown from 21 – 27 Jul  
Claiming period ends 17 Aug

**83,000 have received at least one COVID Disaster Payment.**

**\$46.5m paid out as at 15 Aug.**

**\$6m paid in initial payments in the week ending 15 Aug.**

Weekly cumulative payments made by State since activation on 28 Jul 2021.



### Queensland

Lockdown from 31 Jul – 11 Aug  
Claiming period ends 5 Sep

**153,000 have received at least one COVID Disaster Payment.**

**\$200m paid out as at 15 Aug.**

**\$164m paid in initial payments in the week ending 15 Aug.**

Weekly cumulative payments made by State since activation on 7 Aug 2021.

