



CURRENT STATUS OF CONFIRMED CASES



70



| ACT | NSW | NT | QLD | SA | TAS | VIC | WA |
|-----|-----|----|-----|----|-----|-----|----|
| 0 | 67 | 0 | 1 | 1 | 0 | 0 | 1 |

428



| ACT | NSW | NT | QLD | SA | TAS | VIC | WA |
|-----|-----|----|-----|----|-----|-----|----|
| 0 | 349 | 7 | 63 | 3 | 0 | 5 | 1 |

26,751,476

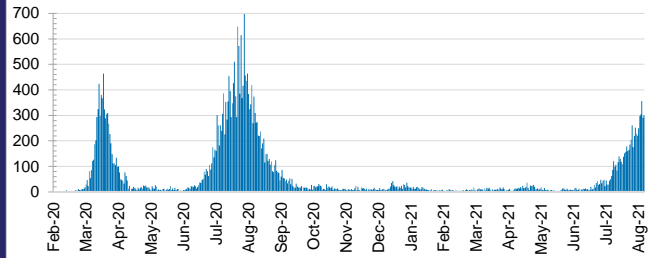


0.1% POSITIVE

**TOTAL TESTS
CONDUCTED**

| ACT | NSW | NT | QLD |
|-----------------|-----------------|-----------------|-----------------|
| 279,233 | 1,006,421 | 309,367 | 3,682,407 |
| POSITIVE | POSITIVE | POSITIVE | POSITIVE |
| 0.0% | 0.1% | 0.1% | 0.1% |
| SA | TAS | VIC | WA |
| 1,981,374 | 306,270 | 8,571,973 | 1,556,640 |
| POSITIVE | POSITIVE | POSITIVE | POSITIVE |
| 0.0% | 0.1% | 0.2% | 0.1% |

DAILY NUMBER OF REPORTED CASES

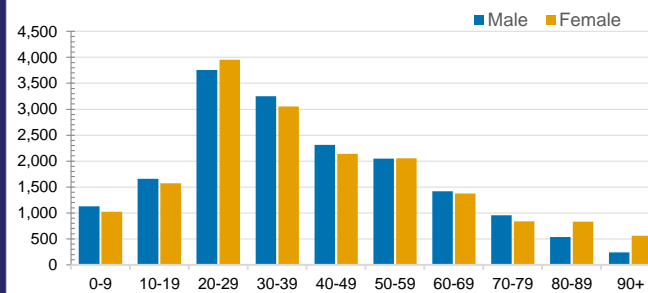


CASES IN AGED CARE SERVICES

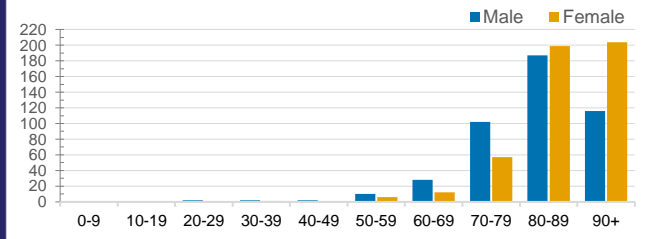
| Confirmed Cases | Australia | ACT | NSW | NT | QLD | SA | TAS | VIC | WA |
|-----------------------------|-------------------|-----|--------------|----|-------|-------|-----------|-------------------|-------|
| Residential Care Recipients | 2087 [1366] (686) | 0 | 94 [33] (29) | 0 | 1 (1) | 0 | 1 (1) | 1991 [1333] (655) | 0 |
| In Home Care Recipients | 84 [73] (9) | 0 | 16 [13] (1) | 0 | 8 [8] | 1 [1] | 5 [3] (2) | 53 [48] (5) | 1 (1) |

Cases in care recipients [recovered] (deaths)

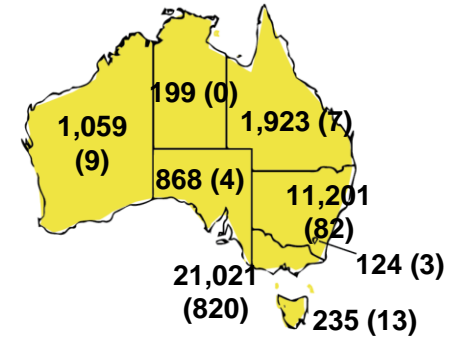
CASES BY AGE GROUP AND SEX



DEATHS BY AGE GROUP AND SEX



CASES (DEATHS) BY STATE AND TERRITORIES



CASES BY SOURCE OF INFECTION

Australia (% of all confirmed cases)



PUBLIC HEALTH RESPONSE MEASURE

Proportion of total cases under investigation

