



CURRENT STATUS OF CONFIRMED CASES



62



ACT	NSW	NT	QLD	SA	TAS	VIC	WA
0	58	0	1	1	0	1	1

433



ACT	NSW	NT	QLD	SA	TAS	VIC	WA
0	351	7	65	3	0	6	1

26,533,302

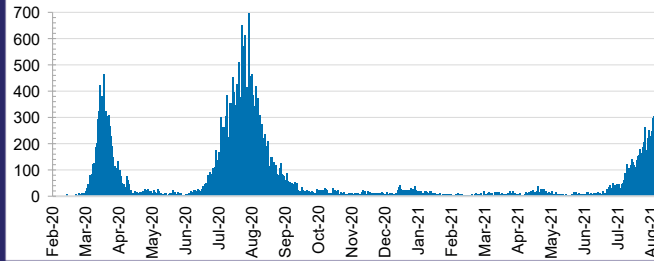


0.1% POSITIVE

**TOTAL TESTS
CONDUCTED**

ACT	NSW	NT	QLD
278,553	9,930,372	308,387	3,656,013
POSITIVE	POSITIVE	POSITIVE	POSITIVE
0.0%	0.1%	0.1%	0.1%
SA	TAS	VIC	WA
1,977,554	304,756	8,532,986	1,544,681
POSITIVE	POSITIVE	POSITIVE	POSITIVE
0.0%	0.1%	0.2%	0.1%

DAILY NUMBER OF REPORTED CASES

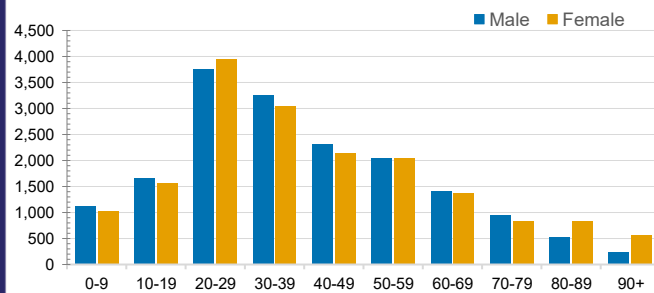


CASES IN AGED CARE SERVICES

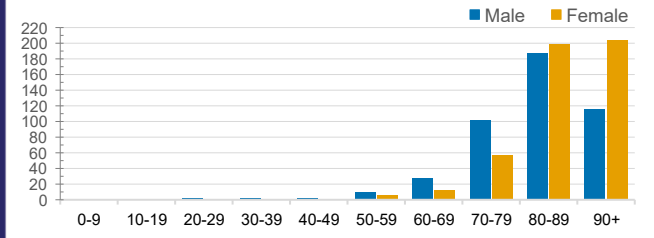
Confirmed Cases	Australia	ACT	NSW	NT	QLD	SA	TAS	VIC	WA
Residential Care Recipients	2084 [1366]	0	91 [33] (28)	0	1 (1)	0	1 (1)	1991 [1333] (655)	0
In Home Care Recipients	83 [73]	0	15 [13] (1)	0	8 [8]	1 [1]	5 [3] (2)	53 [48] (5)	1 (1)

Cases in care recipients [recovered] (deaths)

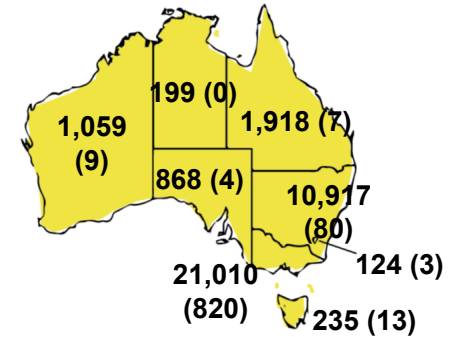
CASES BY AGE GROUP AND SEX



DEATHS BY AGE GROUP AND SEX

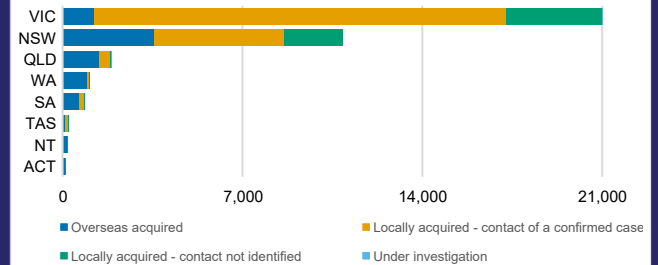


CASES (DEATHS) BY STATE AND TERRITORIES



CASES BY SOURCE OF INFECTION

Australia (% of all confirmed cases)



PUBLIC HEALTH RESPONSE MEASURE

Proportion of total cases under investigation

