



**CURRENT STATUS OF CONFIRMED CASES**



**55**



ACT	NSW	NT	QLD	SA	TAS	VIC	WA
0	49	0	2	1	0	2	1

**385**



ACT	NSW	NT	QLD	SA	TAS	VIC	WA
0	297	7	70	3	0	6	2

**26,163,008**

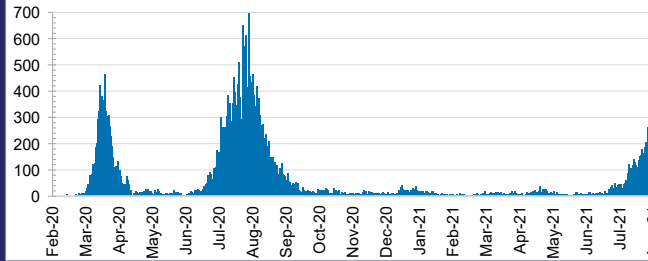


**0.1% POSITIVE**

**TOTAL TESTS  
CONDUCTED**

ACT	NSW	NT	QLD
276,657	9,726,443	305,375	3,588,892
POSITIVE	POSITIVE	POSITIVE	POSITIVE
0.0%	0.1%	0.1%	0.1%
SA	TAS	VIC	WA
1,967,792	301,979	8,451,189	1,544,681
POSITIVE	POSITIVE	POSITIVE	POSITIVE
0.0%	0.1%	0.2%	0.1%

**DAILY NUMBER OF REPORTED CASES**

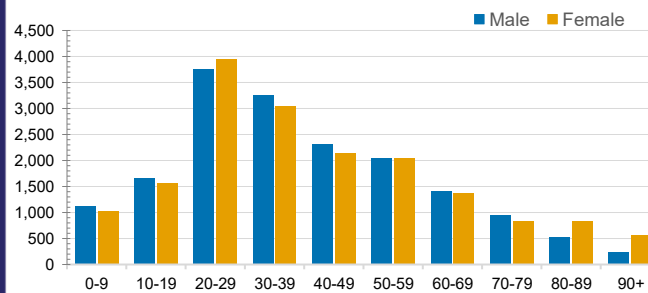


**CASES IN AGED CARE SERVICES**

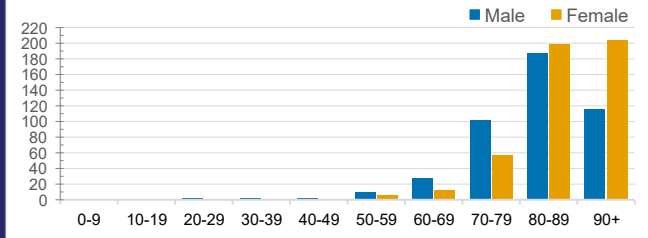
Confirmed Cases	Australia	ACT	NSW	NT	QLD	SA	TAS	VIC	WA
Residential Care Recipients	2084 [1366]	0	91 [33] (28)	0	1 (1)	0	1 (1)	1991 [1333] (655)	0
In Home Care Recipients	83 [73]	0	15 [13] (1)	0	8 [8]	1 [1]	5 [3] (2)	53 [48] (5)	1 (1)

Cases in care recipients [recovered] (deaths)

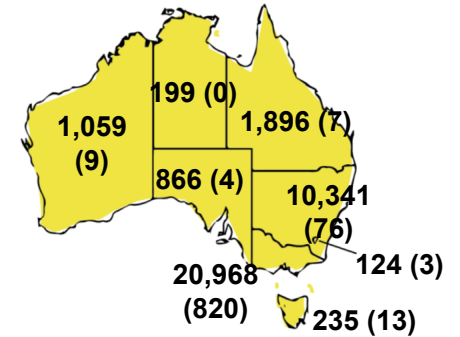
**CASES BY AGE GROUP AND SEX**



**DEATHS BY AGE GROUP AND SEX**

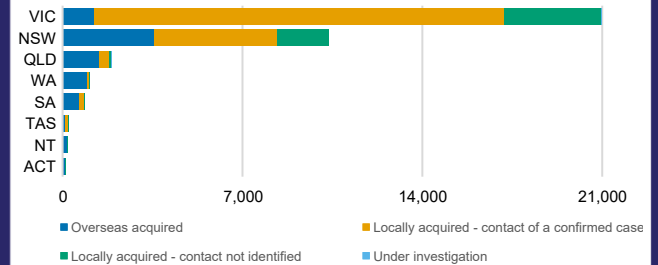


**CASES (DEATHS) BY STATE AND TERRITORIES**



**CASES BY SOURCE OF INFECTION**

Australia (% of all confirmed cases)



**PUBLIC HEALTH RESPONSE MEASURE**

Proportion of total cases under investigation

