



CURRENT STATUS OF CONFIRMED CASES

48,815 **991** **14,887**

Total cases Total deaths Active cases

133



ACT	NSW	NT	QLD	SA	TAS	VIC	WA
1	116	0	2	0	0	14	0

836



ACT	NSW	NT	QLD	SA	TAS	VIC	WA
11	761	2	24	1	0	37	0

30,743,658

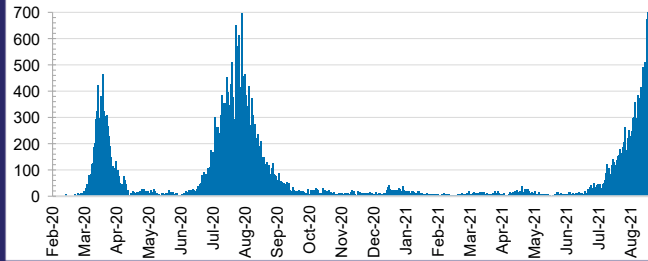


0.2% POSITIVE

**TOTAL TESTS
CONDUCTED**

ACT	NSW	NT	QLD
372,383	12,671,377	343,205	3,969,639
POSITIVE	POSITIVE	POSITIVE	POSITIVE
0.1%	0.2%	0.1%	0.0%
SA	TAS	VIC	WA
2,074,555	328,606	9,344,550	1,639,343
POSITIVE	POSITIVE	POSITIVE	POSITIVE
0.0%	0.1%	0.2%	0.1%

DAILY NUMBER OF REPORTED CASES

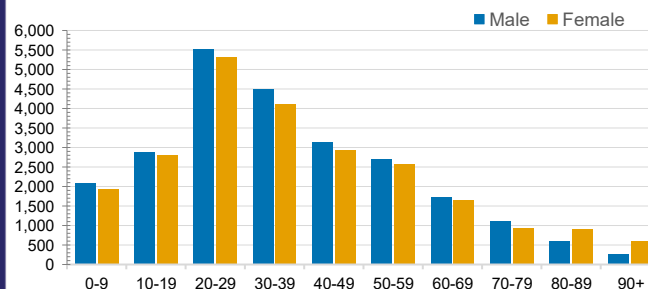


CASES IN AGED CARE SERVICES

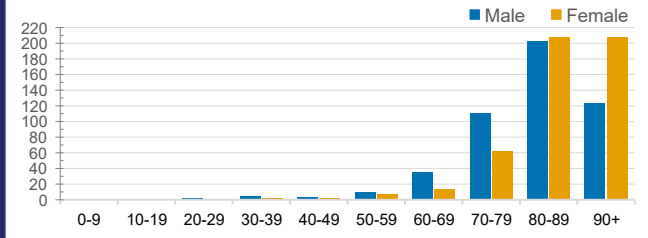
Confirmed Cases	Australia	ACT	NSW	NT	QLD	SA	TAS	VIC	WA
Residential Care Recipients	2152 [1374] (693)	0	159 [38] (36)	0	1 (1)	0	1 (1)	1991 [1336] (655)	0
In Home Care Recipients	85 [73] (9)	1	17 [13] (1)	0	8 [8]	1 [1]	5 [3] (2)	53 [48] (5)	1 (1)

Cases in care recipients [recovered] (deaths)

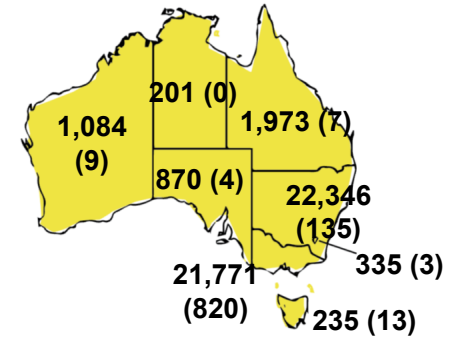
CASES BY AGE GROUP AND SEX



DEATHS BY AGE GROUP AND SEX

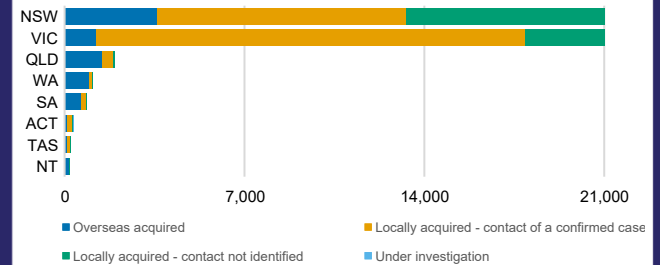


CASES (DEATHS) BY STATE AND TERRITORIES



CASES BY SOURCE OF INFECTION

Australia (% of all confirmed cases)



PUBLIC HEALTH RESPONSE MEASURE

Proportion of total cases under investigation

