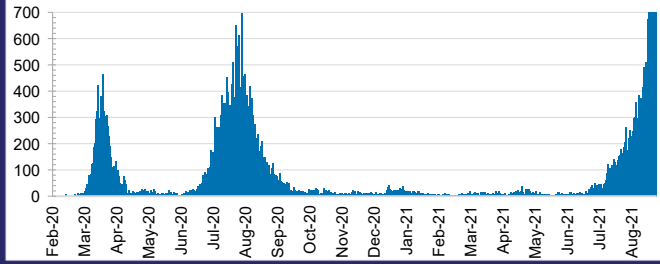




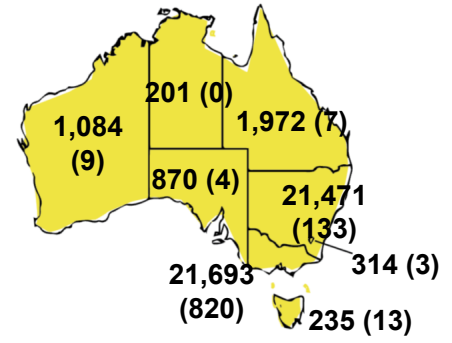
CURRENT STATUS OF CONFIRMED CASES



DAILY NUMBER OF REPORTED CASES



CASES (DEATHS) BY STATE AND TERRITORIES



131



ACT	NSW	NT	QLD	SA	TAS	VIC	WA
3	115	0	2	0	0	11	0

765



ACT	NSW	NT	QLD	SA	TAS	VIC	WA
9	696	2	21	1	0	36	0

30,541,835



0.2% POSITIVE

**TOTAL TESTS
CONDUCTED**

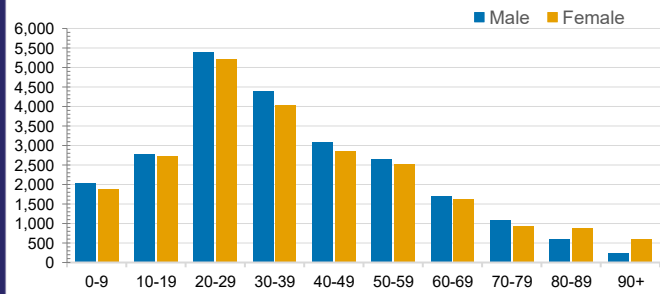
ACT	NSW	NT	QLD
365,141	12,553,257	341,584	3,956,048
POSITIVE	POSITIVE	POSITIVE	POSITIVE
0.1%	0.2%	0.1%	0.0%
SA	TAS	VIC	WA
2,068,683	327,534	9,294,015	1,635,573
POSITIVE	POSITIVE	POSITIVE	POSITIVE
0.0%	0.1%	0.2%	0.1%

CASES IN AGED CARE SERVICES

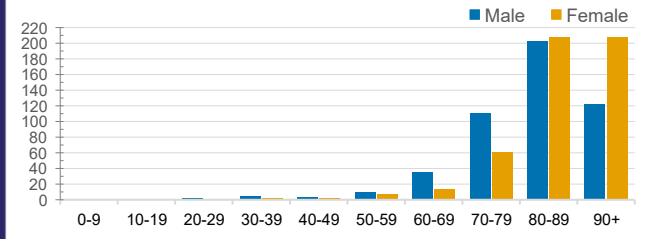
Confirmed Cases	Australia	ACT	NSW	NT	QLD	SA	TAS	VIC	WA
Residential Care Recipients	2151 [1374]	0	158 [38]	0	1 (1)	0	1 (1)	1991 [1336]	0
In Home Care Recipients	85 [73]	1	17 [13]	0	8 [8]	1 [1]	5 [3]	53 [48]	1 (1)

Cases in care recipients [recovered] (deaths)

CASES BY AGE GROUP AND SEX

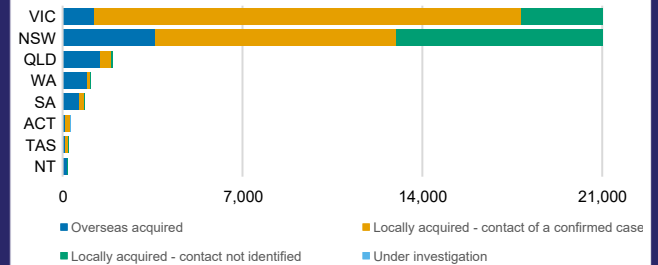


DEATHS BY AGE GROUP AND SEX



CASES BY SOURCE OF INFECTION

Australia (% of all confirmed cases)



PUBLIC HEALTH RESPONSE MEASURE

Proportion of total cases under investigation

