



CURRENT STATUS OF CONFIRMED CASES



127



| ACT | NSW | NT | QLD | SA | TAS | VIC | WA |
|-----|-----|----|-----|----|-----|-----|----|
| 1 | 113 | 0 | 2 | 0 | 0 | 11 | 0 |

708



| ACT | NSW | NT | QLD | SA | TAS | VIC | WA |
|-----|-----|----|-----|----|-----|-----|----|
| 6 | 643 | 1 | 21 | 1 | 0 | 36 | 0 |

30,283,252

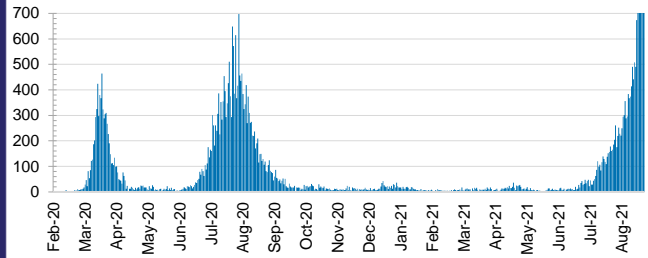


0.2% POSITIVE

**TOTAL TESTS
CONDUCTED**

| ACT | NSW | NT | QLD |
|-----------|------------|-----------|-----------|
| 360,228 | 12,381,719 | 339,957 | 3,943,315 |
| POSITIVE | POSITIVE | POSITIVE | POSITIVE |
| 0.1% | 0.2% | 0.1% | 0.0% |
| SA | TAS | VIC | WA |
| 2,063,776 | 326,323 | 9,237,767 | 1,630,167 |
| POSITIVE | POSITIVE | POSITIVE | POSITIVE |
| 0.0% | 0.1% | 0.2% | 0.1% |

DAILY NUMBER OF REPORTED CASES

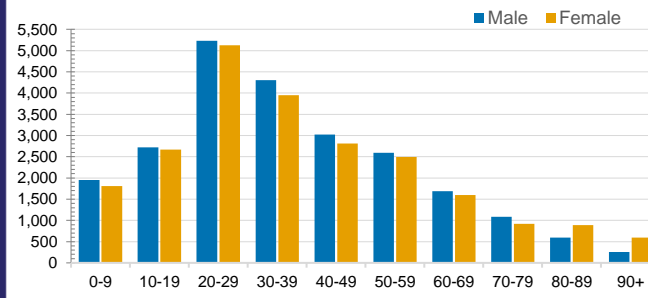


CASES IN AGED CARE SERVICES

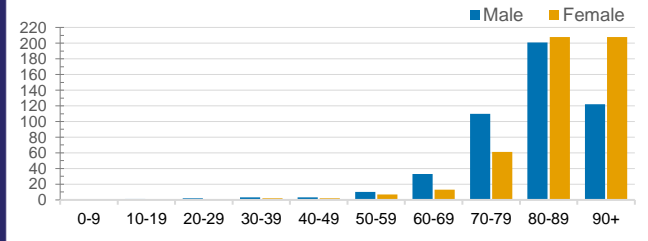
| Confirmed Cases | Australia | ACT | NSW | NT | QLD | SA | TAS | VIC | WA |
|-----------------------------|-------------------|-----|---------------|----|-------|-------|-----------|-------------------|-------|
| Residential Care Recipients | 2146 [1374] (691) | 0 | 153 [38] (34) | 0 | 1 (1) | 0 | 1 (1) | 1991 [1336] (655) | 0 |
| In Home Care Recipients | 85 [73] (9) | 1 | 17 [13] (1) | 0 | 8 [8] | 1 [1] | 5 [3] (2) | 53 [48] (5) | 1 (1) |

Cases in care recipients [recovered] (deaths)

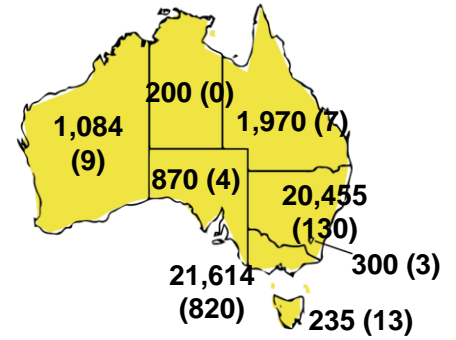
CASES BY AGE GROUP AND SEX



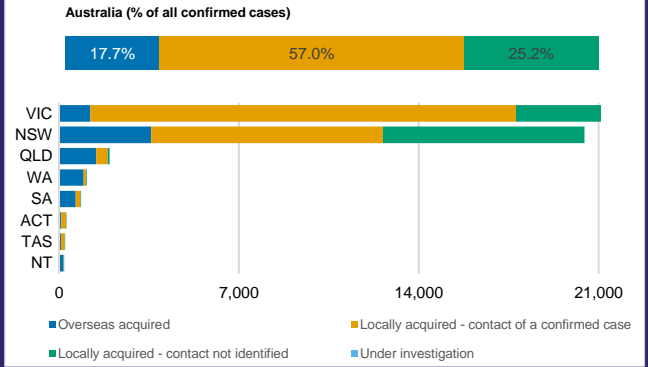
DEATHS BY AGE GROUP AND SEX



CASES (DEATHS) BY STATE AND TERRITORIES



CASES BY SOURCE OF INFECTION



PUBLIC HEALTH RESPONSE MEASURE

