



CURRENT STATUS OF CONFIRMED CASES

44,922

Total cases

984

Total deaths

11,662

Active cases

111

CURRENT CASES
INTENSIVE CARE UNITS (ICU)

| ACT | NSW | NT | QLD | SA | TAS | VIC | WA |
|-----|-----|----|-----|----|-----|-----|----|
| 0 | 10 | 0 | 2 | 0 | 0 | 9 | 0 |

641

CURRENT CASES
ADMITTED TO HOSPITALS

| ACT | NSW | NT | QLD | SA | TAS | VIC | WA |
|-----|-----|----|-----|----|-----|-----|----|
| 4 | 586 | 1 | 20 | 1 | 0 | 29 | 0 |

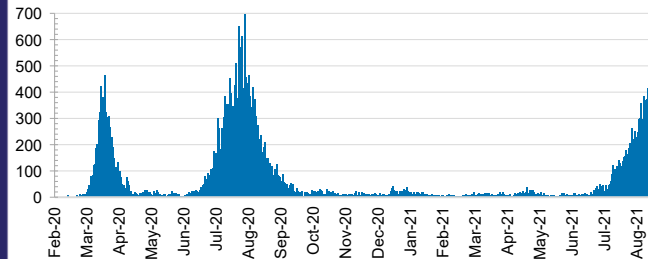
29,853,027

0.2% POSITIVE

TOTAL TESTS
CONDUCTED

| ACT | NSW | NT | QLD |
|-----------|------------|-----------|-----------|
| 349,750 | 12,114,261 | 336,291 | 3,922,177 |
| POSITIVE | POSITIVE | POSITIVE | POSITIVE |
| 0.1% | 0.2% | 0.1% | 0.1% |
| SA | TAS | VIC | WA |
| 2,052,278 | 323,770 | 9,136,022 | 1,618,478 |
| POSITIVE | POSITIVE | POSITIVE | POSITIVE |
| 0.0% | 0.1% | 0.2% | 0.1% |

DAILY NUMBER OF REPORTED CASES

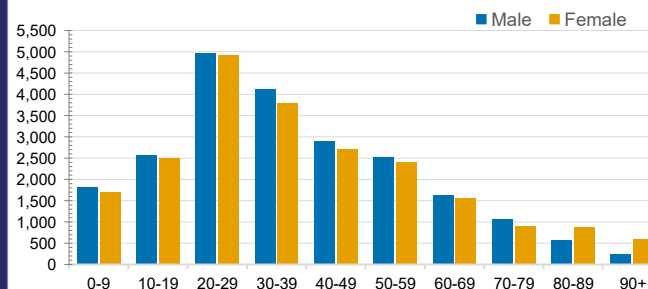


CASES IN AGED CARE SERVICES

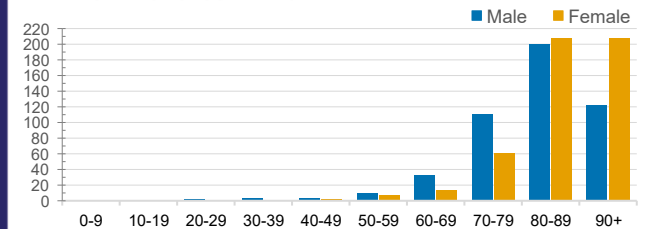
| Confirmed Cases | Australia | ACT | NSW | NT | QLD | SA | TAS | VIC | WA |
|-----------------------------|-------------------|-----|---------------|----|-------|-------|-----------|-------------------|-------|
| Residential Care Recipients | 2136 [1374] (690) | 0 | 143 [38] (34) | 0 | 1 (1) | 0 | 1 (1) | 1991 [1336] (655) | 0 |
| In Home Care Recipients | 85 [73] (9) | 1 | 17 [13] (1) | 0 | 8 [8] | 1 [1] | 5 [3] (2) | 53 [48] (5) | 1 (1) |

Cases in care recipients [recovered] (deaths)

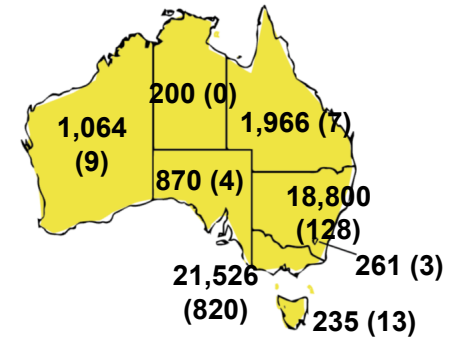
CASES BY AGE GROUP AND SEX



DEATHS BY AGE GROUP AND SEX

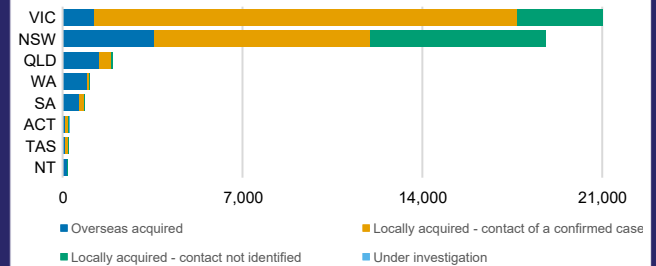
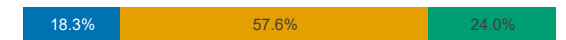


CASES (DEATHS) BY STATE AND TERRITORIES



CASES BY SOURCE OF INFECTION

Australia (% of all confirmed cases)



PUBLIC HEALTH RESPONSE MEASURE

Proportion of total cases under investigation

