



CURRENT STATUS OF CONFIRMED CASES



107



ACT	NSW	NT	QLD	SA	TAS	VIC	WA
0	95	0	0	0	0	12	0

603



ACT	NSW	NT	QLD	SA	TAS	VIC	WA
2	554	1	18	1	0	27	0

29,460,946

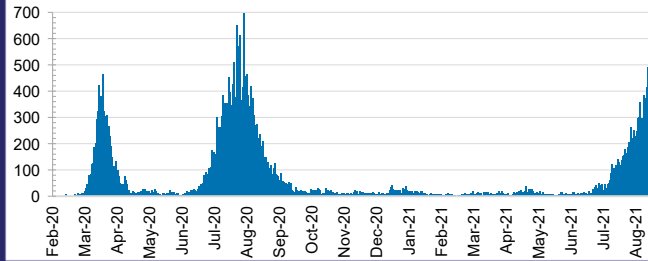


0.1% POSITIVE

**TOTAL TESTS
CONDUCTED**

ACT	NSW	NT	QLD
342,120	11,803,178	334,891	3,913,740
POSITIVE	POSITIVE	POSITIVE	POSITIVE
0.1%	0.2%	0.1%	0.1%
SA	TAS	VIC	WA
2,047,707	322,741	9,089,576	1,606,993
POSITIVE	POSITIVE	POSITIVE	POSITIVE
0.0%	0.1%	0.2%	0.1%

DAILY NUMBER OF REPORTED CASES

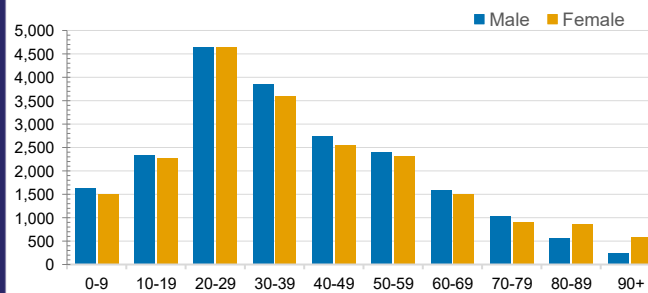


CASES IN AGED CARE SERVICES

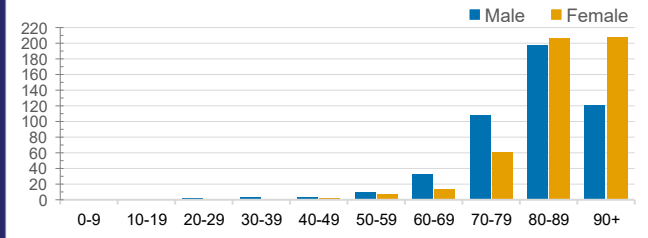
Confirmed Cases	Australia	ACT	NSW	NT	QLD	SA	TAS	VIC	WA
Residential Care Recipients	2133 [1374] (691)	0	140 [38] (34)	0	1 (1)	0	1 (1)	1991 [1336] (655)	0
In Home Care Recipients	86 [73] (9)	1	17 [13] (1)	0	8 [8]	1 [1]	5 [3] (2)	53 [48] (5)	1 (1)

Cases in care recipients [recovered] (deaths)

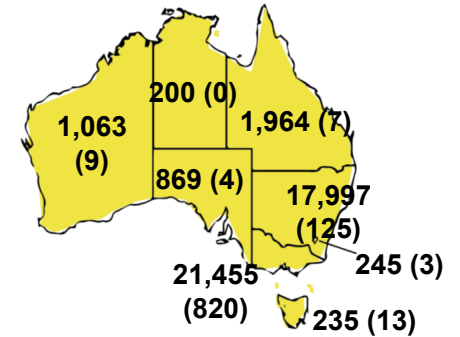
CASES BY AGE GROUP AND SEX



DEATHS BY AGE GROUP AND SEX

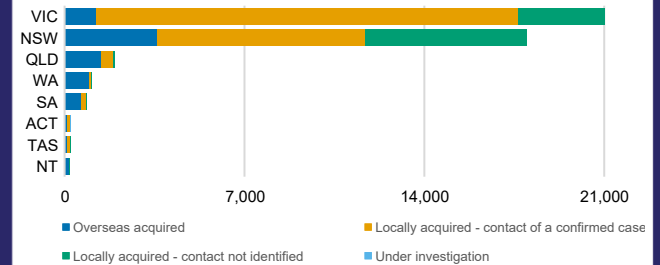


CASES (DEATHS) BY STATE AND TERRITORIES



CASES BY SOURCE OF INFECTION

Australia (% of all confirmed cases)



PUBLIC HEALTH RESPONSE MEASURE

Proportion of total cases under investigation

