



**CURRENT STATUS OF CONFIRMED CASES**



**66**



**CURRENT CASES  
INTENSIVE CARE UNITS (ICU)**

ACT	NSW	NT	QLD	SA	TAS	VIC	WA
0	62	0	1	1	0	1	1

**423**



**CURRENT CASES  
ADMITTED TO HOSPITALS**

ACT	NSW	NT	QLD	SA	TAS	VIC	WA
0	379	2	34	2	0	4	2

**27,958,304**

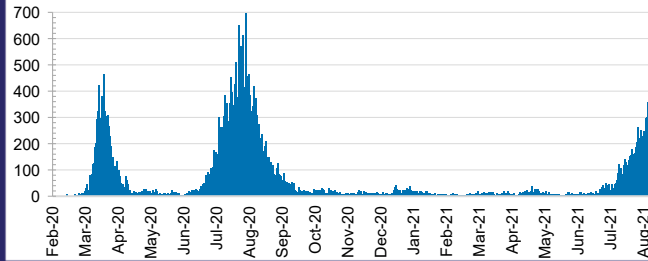


**TOTAL TESTS  
CONDUCTED**

**0.1% POSITIVE**

ACT	NSW	NT	QLD
291,475	10,814,464	320,308	3,829,382
POSITIVE	POSITIVE	POSITIVE	POSITIVE
0.0%	0.1%	0.1%	0.1%
SA	TAS	VIC	WA
2,011,165	314,192	8,800,542	1,576,776
POSITIVE	POSITIVE	POSITIVE	POSITIVE
0.0%	0.1%	0.2%	0.1%

**DAILY NUMBER OF REPORTED CASES**

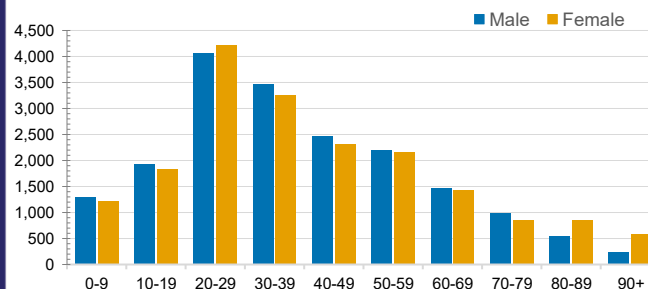


**CASES IN AGED CARE SERVICES**

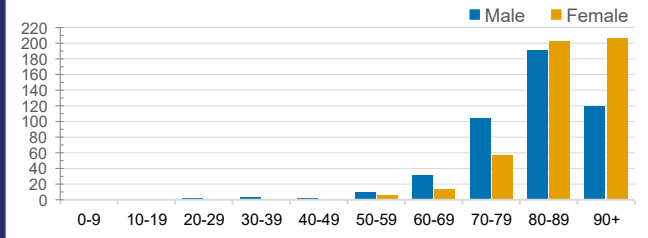
Confirmed Cases	Australia	ACT	NSW	NT	QLD	SA	TAS	VIC	WA
Residential Care Recipients	2113 [1374] (688)	0	120 [38] (31)	0	1 (1)	0	1 (1)	1991 [1336] (655)	0
In Home Care Recipients	84 [73] (9)	0	16 [13] (1)	0	8 [8]	1 [1]	5 [3] (2)	53 [48] (5)	1 (1)

Cases in care recipients [recovered] (deaths)

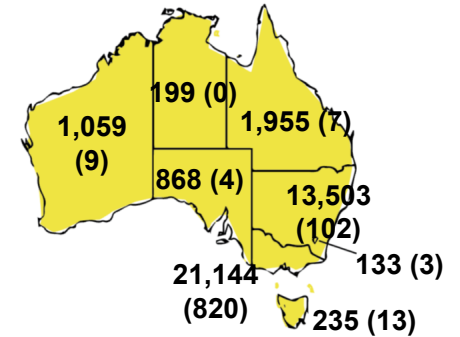
**CASES BY AGE GROUP AND SEX**



**DEATHS BY AGE GROUP AND SEX**

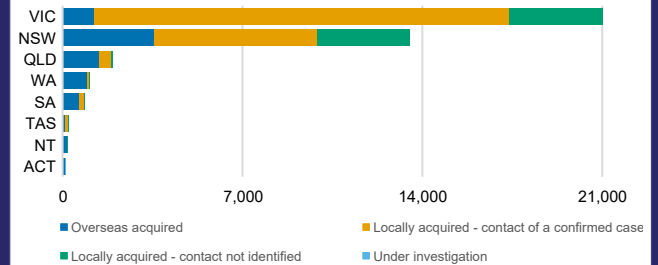
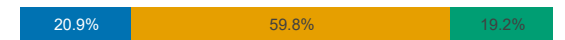


**CASES (DEATHS) BY STATE AND TERRITORIES**



**CASES BY SOURCE OF INFECTION**

Australia (% of all confirmed cases)



**PUBLIC HEALTH RESPONSE MEASURE**

Proportion of total cases under investigation

