



CURRENT STATUS OF CONFIRMED CASES



65



ACT	NSW	NT	QLD	SA	TAS	VIC	WA
0	62	0	1	1	0	0	1

429



ACT	NSW	NT	QLD	SA	TAS	VIC	WA
0	374	3	46	3	0	2	1

27,361,145

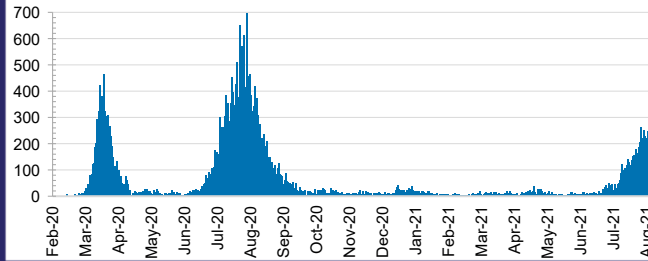


0.1% POSITIVE

**TOTAL TESTS
CONDUCTED**

ACT	NSW	NT	QLD
284,003	10,430,334	315,425	3,757,764
POSITIVE	POSITIVE	POSITIVE	POSITIVE
0.0%	0.1%	0.1%	0.1%
SA	TAS	VIC	WA
1,996,436	310,838	8,693,844	1,572,501
POSITIVE	POSITIVE	POSITIVE	POSITIVE
0.0%	0.1%	0.2%	0.1%

DAILY NUMBER OF REPORTED CASES

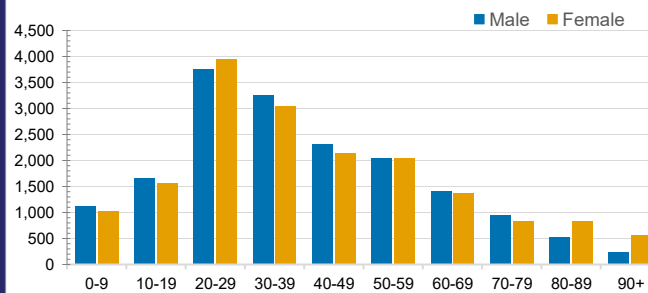


CASES IN AGED CARE SERVICES

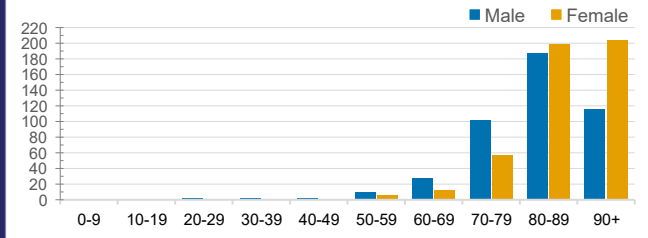
Confirmed Cases	Australia	ACT	NSW	NT	QLD	SA	TAS	VIC	WA
Residential Care Recipients	2108 [1374] (687)	0	115 [38] (30)	0	1 (1)	0	1 (1)	1991 [1336] (655)	0
In Home Care Recipients	84 [73] (9)	0	16 [13] (1)	0	8 [8]	1 [1]	5 [3] (2)	53 [48] (5)	1 (1)

Cases in care recipients [recovered] (deaths)

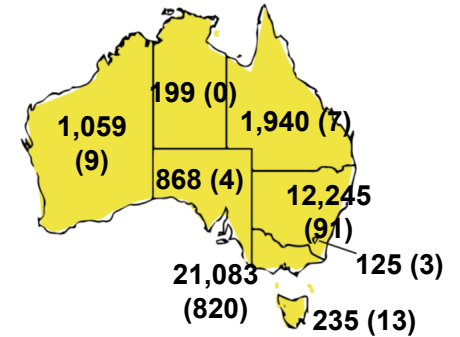
CASES BY AGE GROUP AND SEX



DEATHS BY AGE GROUP AND SEX

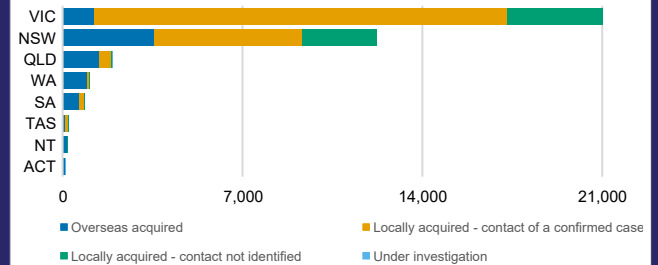


CASES (DEATHS) BY STATE AND TERRITORIES



CASES BY SOURCE OF INFECTION

Australia (% of all confirmed cases)



PUBLIC HEALTH RESPONSE MEASURE

Proportion of total cases under investigation

