



CURRENT STATUS OF CONFIRMED CASES

37,372 **944** **5,635**

Total cases Total deaths Active cases

64

CURRENT CASES INTENSIVE CARE UNITS (ICU)

ACT	NSW	NT	QLD	SA	TAS	VIC	WA
0	62	0	1	0	0	0	1

439

CURRENT CASES ADMITTED TO HOSPITALS

ACT	NSW	NT	QLD	SA	TAS	VIC	WA
0	373	3	59	2	0	1	1

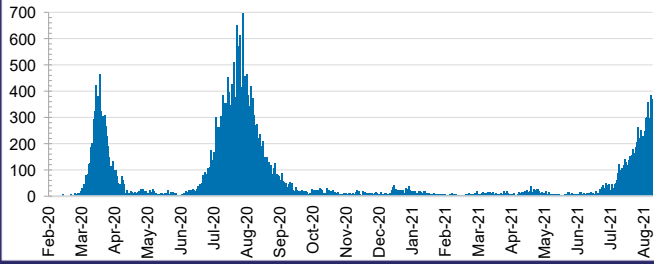
27,118,125

0.1% POSITIVE

TOTAL TESTS CONDUCTED

ACT	NSW	NT	QLD
282,184	1,027,850	313,746	3,725,990
POSITIVE	POSITIVE	POSITIVE	POSITIVE
0.0%	0.1%	0.1%	0.1%
SA	TAS	VIC	WA
1,991,503	309,422	8,648,436	1,568,340
POSITIVE	POSITIVE	POSITIVE	POSITIVE
0.0%	0.1%	0.2%	0.1%

DAILY NUMBER OF REPORTED CASES

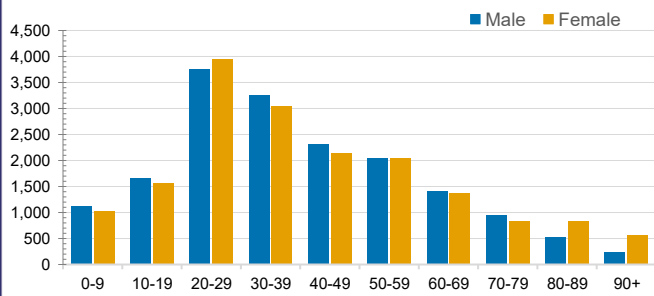


CASES IN AGED CARE SERVICES

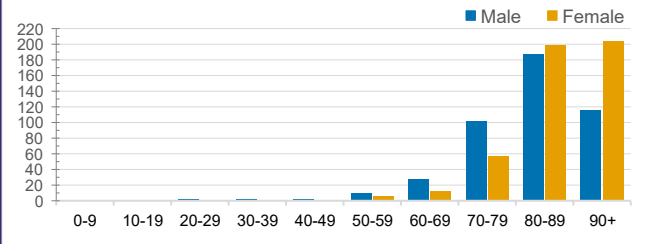
Confirmed Cases	Australia	ACT	NSW	NT	QLD	SA	TAS	VIC	WA
Residential Care Recipients	2104 [1374] (686)	0	111 [38] (29)	0	1 (1)	0	1 (1)	1991 [1336] (655)	0
In Home Care Recipients	84 [73] (9)	0	16 [13] (1)	0	8 [8]	1 [1]	5 [3] (2)	53 [48] (5)	1 (1)

Cases in care recipients [recovered] (deaths)

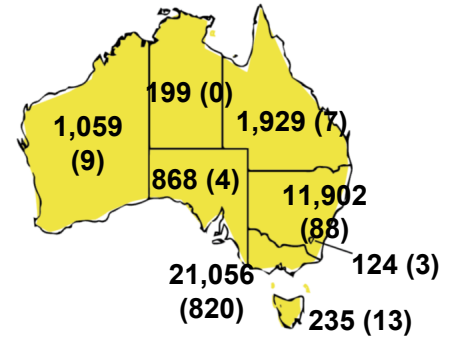
CASES BY AGE GROUP AND SEX



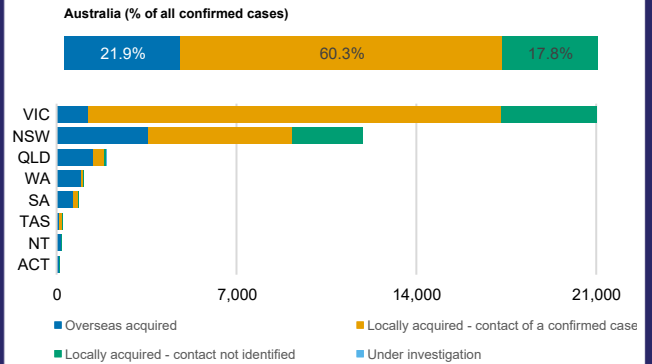
DEATHS BY AGE GROUP AND SEX



CASES (DEATHS) BY STATE AND TERRITORIES



CASES BY SOURCE OF INFECTION



PUBLIC HEALTH RESPONSE MEASURE

