

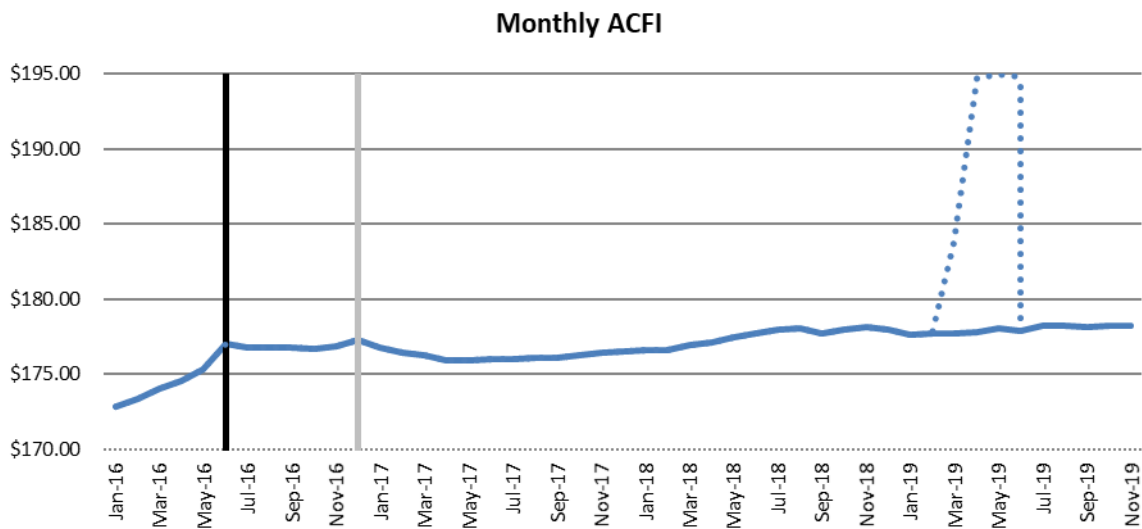


## ACFI Monitoring Report – November 2019

### Summary

- Average ACFI claims increased in November.
- The impact of the temporary increase in subsidies in the March 2019 quarter is highlighted in Figure 1 in the dashed line, with the solid line representing the average daily claim rate without the impact of the temporary increase. The remainder of this report provides analysis based on the changes in claim rates without the temporary increase incorporated.

**Figure 1: Average daily ACFI claim per month <sup>1</sup>**

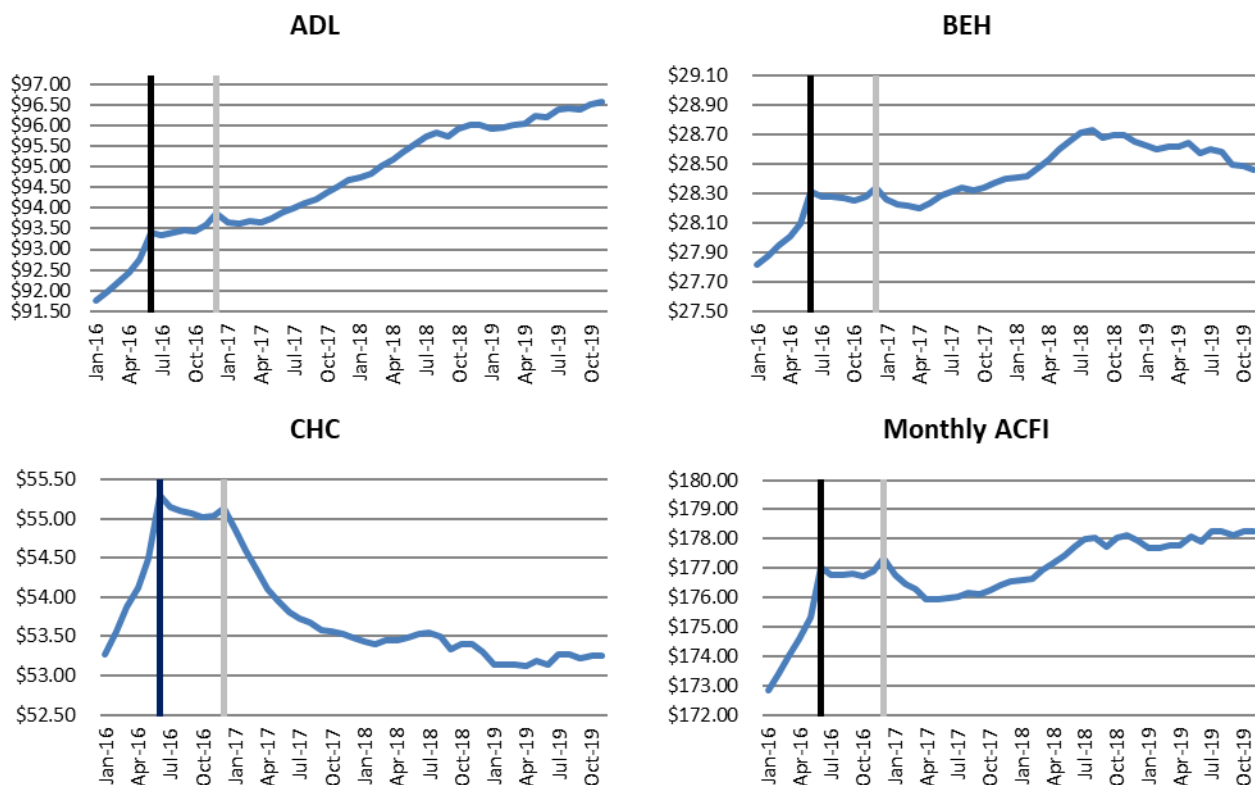


**Table 1: Cumulative Daily Average ACFI Subsidies and Growth Rates by ACFI Category**

Average ACFI Category Subsidy	Jul 2018 To Nov 2018	Jul 2019 To Nov 2019	Nominal Growth Over Same Period in Previous Year	Real Growth Over Same Period in Previous Year
ADL	\$94.50	\$96.46	2.1%	0.7%
BEH	\$28.30	\$28.53	0.8%	-0.6%
CHC	\$52.68	\$53.25	1.1%	-0.3%

1. All \$ values are based on ACFI Question Responses and calculated at 2019/20 ACFI rates

**Figure 2. Daily Average \$/Day Trend by Month – 2019/20 Dollars**



**Table 2: Cumulative Daily Average ACFI Subsidies and Growth Rates by State**

State	Jul 2018 To Nov 2018	Jul 2019 To Nov 2019	Nominal Growth Over Same Period in Previous Year	Real Growth Over Same Period in Previous Year
<b>Projected National</b>	\$175.48	\$179.18	2.1%	0.9%
<b>Actual National</b>	\$175.48	\$178.23	1.6%	0.2%
NSW	\$171.16	\$173.90	1.6%	0.2%
VIC	\$181.80	\$184.83	1.7%	0.3%
QLD	\$173.31	\$176.22	1.7%	0.3%
WA	\$182.39	\$184.70	1.3%	-0.1%
SA	\$174.14	\$176.15	1.2%	-0.2%
TAS	\$168.90	\$170.68	1.1%	-0.3%
ACT	\$167.41	\$170.55	1.9%	0.5%
NT	\$167.12	\$169.68	1.5%	0.1%

**Table 3: Cumulative Daily Average ACFI Subsidies and Growth Rates by Remoteness**

Remoteness	Jul 2018 To Nov 2018	Jul 2019 To Nov 2019	Nominal Growth Over Same Period in Previous Year	Real Growth Over Same Period in Previous Year
Major Cities of Australia	\$179.13	\$181.96	1.6%	0.2%
Inner Regional Australia	\$168.50	\$171.47	1.8%	0.4%
Outer Regional Australia	\$164.09	\$165.39	0.8%	-0.6%
Remote Australia	\$141.82	\$142.92	0.8%	-0.6%
Very Remote Australia	\$152.68	\$148.80	-2.5%	-3.9%

**Table 4: Cumulative Daily Average ACFI Subsidies and Growth Rates by Organisation Type**

Organisation Type	Jul 2018 To Nov 2018	Jul 2019 To Nov 2019	Nominal Growth Over Same Period in Previous Year	Real Growth Over Same Period in Previous Year
Not-For-Profit	\$170.63	\$173.96	1.9%	0.5%
For-Profit	\$184.84	\$186.87	1.1%	-0.3%
Government	\$153.04	\$153.92	0.6%	-0.8%

**Table 5: Cumulative Daily Average ACFI Subsidies and Growth Rates by Provider Size**

Provider Size*	Jul 2018 To Nov 2018	Jul 2019 To Nov 2019	Nominal Growth Over Same Period in Previous Year	Real Growth Over Same Period in Previous Year
0-39	\$150.33	\$148.84	-1.0%	-2.4%
40-74	\$160.48	\$163.39	1.8%	0.4%
75-129	\$168.39	\$170.35	1.2%	-0.2%
130-499	\$173.02	\$176.09	1.8%	0.4%
500-999	\$179.43	\$182.77	1.9%	0.5%
1000+	\$181.75	\$184.03	1.3%	-0.1%

\*Based on full time equivalent residents per year for 2018-19. Only includes providers active during July 2019.

**Table 6: Cumulative proportion of total days by ACFI Level and ACFI Category**

ACFI Level	ADL			BEH			CHC		
	Jul 2018 To Nov 2018	Jul 2019 To Nov 2019	Change ADL	Jul 2018 To Nov 2018	Jul 2019 To Nov 2019	Change BEH	Jul 2018 To Nov 2018	Jul 2019 To Nov 2019	Change CHC
H	59.5%	60.6%	1.0%	64.3%	63.7%	-0.7%	52.8%	51.7%	-1.2%
M	29.5%	29.2%	-0.3%	21.8%	22.1%	0.3%	30.2%	31.6%	1.4%
L	10.4%	9.7%	-0.7%	10.1%	10.2%	0.2%	16.1%	16.1%	-0.1%
N	0.5%	0.5%	0.0%	3.8%	4.0%	0.2%	0.8%	0.6%	-0.1%

**Table 7: Cumulative proportion of total days by ADL Scores and ADL Question**

ADL Question	Jul 2018 To Nov 2018				Jul 2019 To Nov 2019			
	A	B	C	D	A	B	C	D
Nutrition	3.02%	13.77%	67.9%	15.3%	2.80%	13.02%	69.7%	14.5%
Mobility	1.71%	2.62%	34.1%	61.5%	1.59%	2.17%	33.5%	62.7%
Personal Hygiene	0.40%	5.23%	8.9%	85.4%	0.39%	5.12%	8.7%	85.8%
Toileting	2.63%	10.07%	14.7%	72.6%	2.24%	9.51%	15.2%	73.0%
Contenance	11.63%	2.24%	4.1%	82.0%	11.06%	2.01%	3.8%	83.1%

**Table 8: Cumulative proportion of total days by BEH Scores and BEH Question**

BEH Question	Jul 2018 To Nov 2018				Jul 2019 To Nov 2019			
	A	B	C	D	A	B	C	D
Cognitive Skills	7.9%	28.1%	36.71%	27.3%	7.4%	28.0%	37.86%	26.8%
Wandering	83.2%	5.1%	3.60%	8.0%	85.0%	4.7%	3.37%	7.0%
Verbal	11.2%	11.0%	19.14%	58.7%	11.7%	11.2%	19.59%	57.5%
Physical	26.0%	15.1%	18.94%	40.0%	27.2%	15.4%	19.37%	38.0%
Depression	35.1%	29.8%	17.72%	17.4%	34.3%	29.9%	18.13%	17.7%

**Table 9: Distribution of claim days for the CHC**

**Jul 2018 to Nov 2018**

Appraised before 1 July 2016

Q11 \ Q12	A	B	C	D
A	0.1%	0.0%	0.3%	0.0%
B	0.2%	0.7%	1.6%	3.1%
C	0.7%	0.5%	1.6%	3.9%
D	0.3%	1.5%	8.3%	2.7%

Rating	Proportion
Nil	1.3%
Low	8.4%
Med	19.7%
High	70.7%

Appraised between 1 July 2016 and 31 December 2016

Q11 \ Q12	A	B	C	D
A	0.0%	0.0%	0.0%	0.0%
B	0.1%	0.4%	0.8%	1.7%
C	0.2%	0.2%	0.8%	1.9%
D	0.1%	0.6%	0.6%	1.8%

Rating	Proportion
Nil	1.1%
Low	9.7%
Med	30.2%
High	58.9%

Appraised on or after 1 January 2017

Q11 \ Q12	A	B	C	D
A - No Assistance	0.3%	0.1%	0.3%	0.2%
B - Assistance	7.0%	5.9%	21.0%	26.5%
C - Injections	0.0%	0.5%	0.6%	2.9%

Rating	Proportion
Nil	0.5%
Low	20.3%
Med	34.2%
High	45.0%

**Jul 2019 to Nov 2019**

Appraised before 1 July 2016

Q11 \ Q12	A	B	C	D
A	0.0%	0.0%	0.2%	0.0%
B	0.1%	0.4%	0.9%	2.0%
C	0.3%	0.2%	0.9%	2.5%
D	0.1%	0.9%	5.3%	1.7%

Rating	Proportion
Nil	1.2%
Low	7.1%
Med	18.2%
High	73.6%

Appraised between 1 July 2016 and 31 December 2016

Q11 \ Q12	A	B	C	D
A	0.0%	0.0%	0.0%	0.0%
B	0.0%	0.2%	0.4%	1.1%
C	0.1%	0.1%	0.4%	1.2%
D	0.0%	0.3%	0.3%	1.1%

Rating	Proportion
Nil	1.0%
Low	7.7%
Med	27.9%
High	63.4%

Appraised on or after 1 January 2017

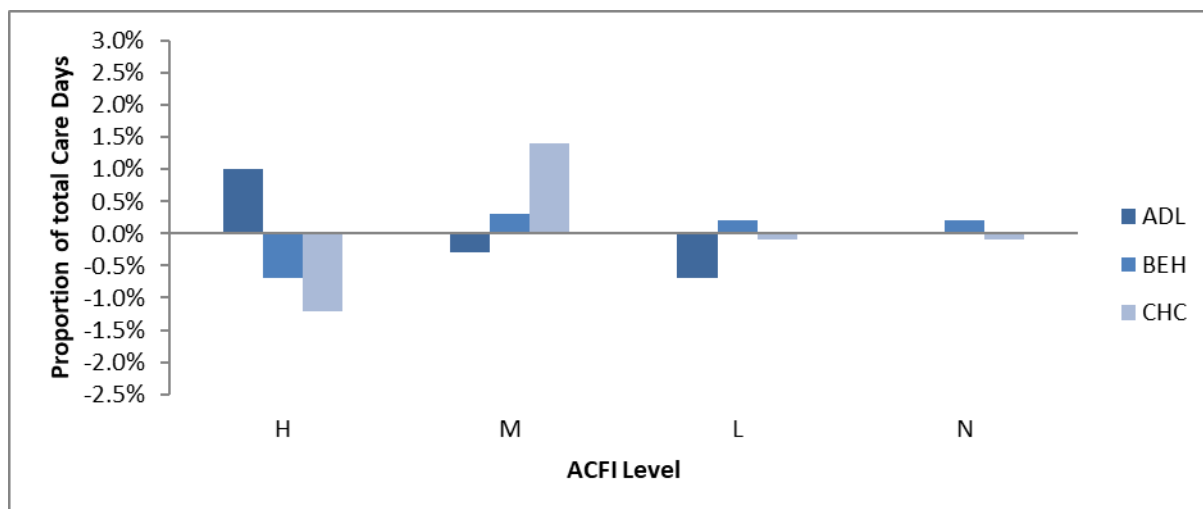
Q11 \ Q12	A	B	C	D
A - No Assistance	0.3%	0.1%	0.4%	0.2%
B - Assistance	8.3%	5.9%	25.8%	33.4%
C - Injections	0.0%	0.6%	0.7%	3.5%

Rating	Proportion
Nil	0.5%
Low	18.5%
Med	34.4%
High	46.6%

**Table 10: Actual Average ACFI per day – Monthly and Cumulative**

ACFI	Jul 19	Aug 19	Sep 19	Oct 19	Nov 19	Dec 19
Monthly ACFI	\$178.26	\$178.27	\$178.11	\$178.26	\$178.27	
Cumulative ACFI	\$178.26	\$178.26	\$178.21	\$178.23	\$178.23	
ACFI	Jan 20	Feb 20	Mar 20	Apr 20	May 20	Jun 20
Monthly ACFI						
Cumulative ACFI						

**Figure 3. ACFI Category - Change in Proportion of Total Care Days Year to Date – Year on Year\***



\*Compares change in proportion of care days for 1 July to 30 November between 2018/19 and 2019/20