



ACFI Monitoring Report – June 2020

Summary

- Average ACFI claims increased in June.
- The solid line in Figure 1 shows the average daily claim rate.
- The impact of the temporary increase in subsidies in the March 2019 quarter is highlighted in the dotted line, while the dashed line shows the impact of temporary funding increase from 1 March 2020 in response to the COVID-19 pandemic.
- The remainder of this report provides analysis based on the changes in claim rates without the temporary increase incorporated.

Figure 1. Average daily ACFI claim per month ¹

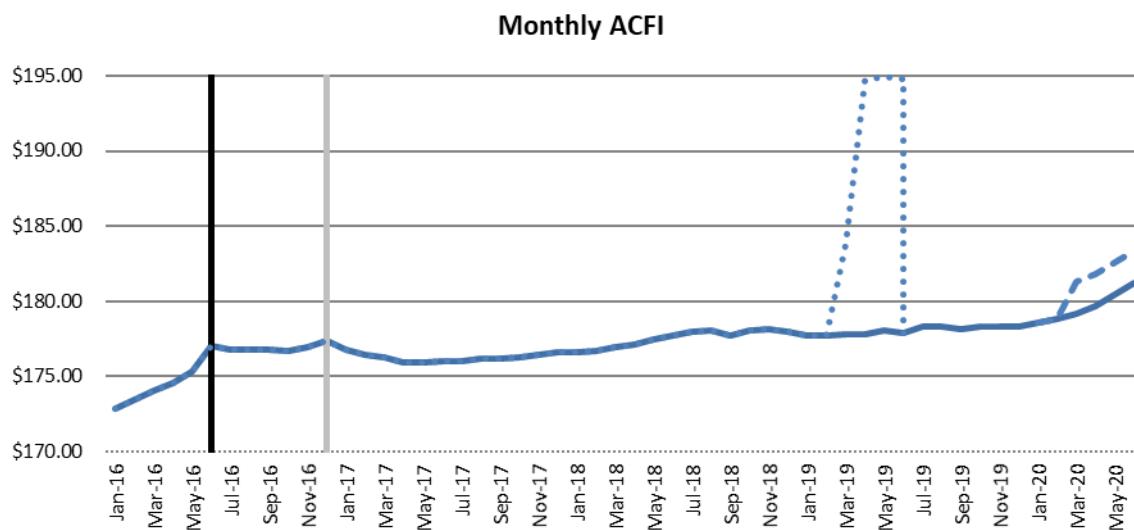


Table 1: Cumulative Daily Average ACFI Subsidies and Growth Rates by ACFI Category

Average ACFI Category Subsidy	Jul 2018 To June 2019	Jul 2019 To June 2020	Nominal Growth Over Same Period in Previous Year	Real Growth Over Same Period in Previous Year
ADL	\$94.63	\$96.89	2.4%	1.0%
BEH	\$28.26	\$28.56	1.1%	-0.3%
CHC	\$52.53	\$53.49	1.8%	0.4%

1. All \$ values are based on ACFI Question Responses and calculated at 2019/20 ACFI rates

Figure 2. Daily Average \$/Day Trend by Month – 2019/20 Dollars

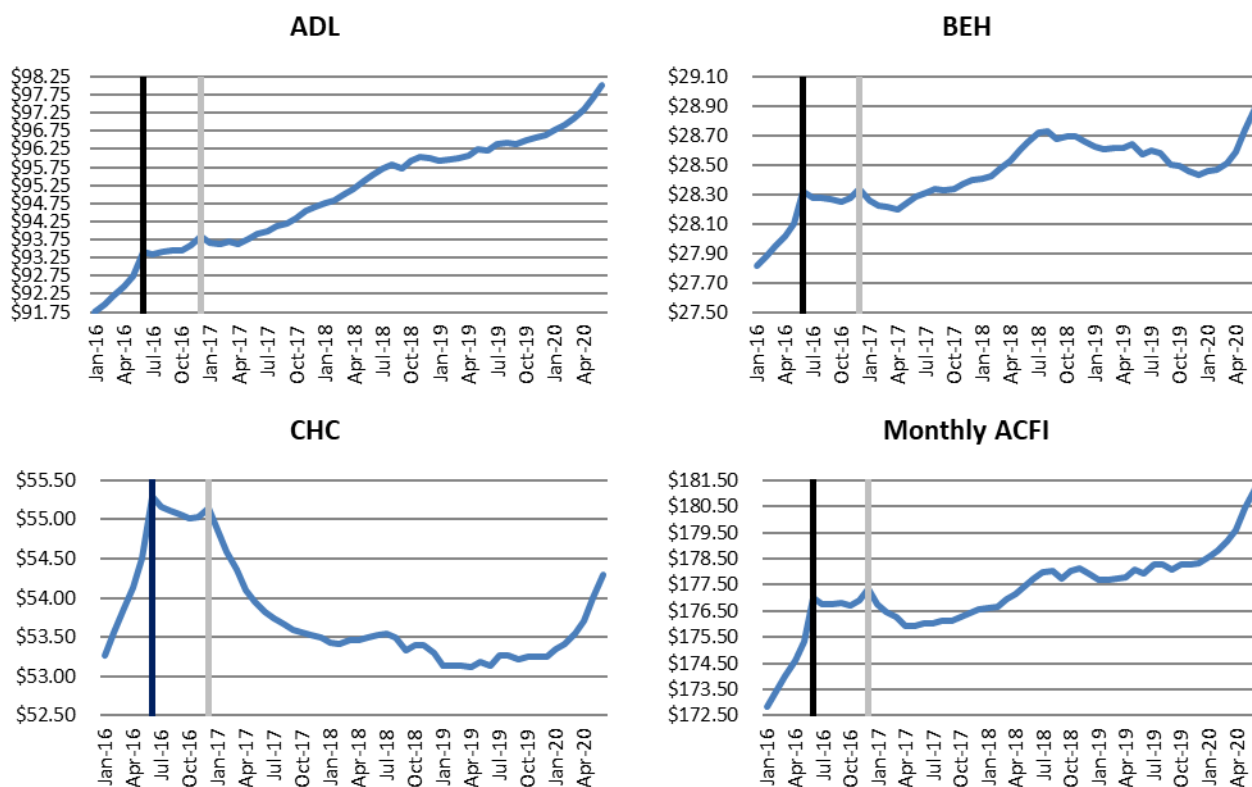


Table 2: Cumulative Daily Average ACFI Subsidies and Growth Rates by State

State	Jul 2018 To June 2019	Jul 2019 To June 2020	Nominal Growth Over Same Period in Previous Year	Real Growth Over Same Period in Previous Year
Projected National	\$175.42	\$180.01	2.6%	1.4%
Actual National	\$175.42	\$178.94	2.0%	0.6%
NSW	\$170.99	\$174.87	2.3%	0.9%
VIC	\$181.91	\$185.15	1.8%	0.4%
QLD	\$173.32	\$176.98	2.1%	0.7%
WA	\$182.14	\$185.19	1.7%	0.3%
SA	\$174.18	\$176.69	1.4%	0.0%
TAS	\$168.35	\$171.93	2.1%	0.7%
ACT	\$167.63	\$172.46	2.9%	1.5%
NT	\$165.11	\$172.88	4.7%	3.3%

Table 3: Cumulative Daily Average ACFI Subsidies and Growth Rates by Remoteness

Remoteness	Jul 2018 To June 2019	Jul 2019 To June 2020	Nominal Growth Over Same Period in Previous Year	Real Growth Over Same Period in Previous Year
Major Cities of Australia	\$179.14	\$182.51	1.9%	0.5%
Inner Regional Australia	\$168.45	\$172.46	2.4%	1.0%
Outer Regional Australia	\$163.39	\$166.54	1.9%	0.5%
Remote Australia	\$141.01	\$143.81	2.0%	0.6%
Very Remote Australia	\$152.23	\$150.27	-1.3%	-2.7%

Table 4: Cumulative Daily Average ACFI Subsidies and Growth Rates by Organisation Type

Organisation Type	Jul 2018 To June 2019	Jul 2019 To June 2020	Nominal Growth Over Same Period in Previous Year	Real Growth Over Same Period in Previous Year
Not-For-Profit	\$170.78	\$174.87	2.4%	1.0%
For-Profit	\$184.49	\$187.25	1.5%	0.1%
Government	\$152.75	\$154.05	0.8%	-0.5%

Table 5: Cumulative Daily Average ACFI Subsidies and Growth Rates by Provider Size

Provider Size*	Jul 2018 To June 2019	Jul 2019 To June 2020	Nominal Growth Over Same Period in Previous Year	Real Growth Over Same Period in Previous Year
0-39	\$149.85	\$150.03	0.1%	-1.3%
40-74	\$160.30	\$164.43	2.6%	1.2%
75-129	\$168.56	\$171.22	1.6%	0.2%
130-499	\$173.31	\$176.99	2.1%	0.7%
500-999	\$179.44	\$183.43	2.2%	0.8%
1000+	\$181.42	\$184.46	1.7%	0.3%

*Based on full time equivalent residents per year for 2018-19. Only includes providers active during July 2019.

Table 6: Cumulative proportion of total days by ACFI Level and ACFI Category

ACFI Level	ADL			BEH			CHC		
	Jul 2018 To June 2019	Jul 2019 To June 2020	Change ADL	Jul 2018 To June 2019	Jul 2019 To June 2020	Change BEH	Jul 2018 To June 2019	Jul 2019 To June 2020	Change CHC
H	59.8%	61.3%	1.5%	64.2%	63.7%	-0.4%	52.3%	52.0%	-0.2%
M	29.4%	28.9%	-0.5%	21.9%	22.2%	0.4%	30.7%	31.7%	1.0%
L	10.3%	9.3%	-1.0%	10.1%	10.1%	0.0%	16.3%	15.6%	-0.7%
N	0.5%	0.5%	0.0%	3.9%	3.9%	0.0%	0.7%	0.6%	-0.1%

Table 7: Cumulative proportion of total days by ADL Scores and ADL Question

ADL Question	Jul 2018 To June 2019				Jul 2019 To June 2020			
	A	B	C	D	A	B	C	D
Nutrition	3.0%	13.6%	68.4%	15.1%	2.6%	12.6%	70.3%	14.4%
Mobility	1.7%	2.5%	34.0%	61.8%	1.5%	2.0%	33.1%	63.3%
Personal Hygiene	0.4%	5.2%	8.9%	85.5%	0.4%	4.9%	8.5%	86.2%
Toileting	2.5%	10.0%	14.8%	72.7%	2.1%	9.2%	15.4%	73.4%
Continence	11.5%	2.2%	4.0%	82.3%	10.7%	1.9%	3.7%	83.6%

Table 8: Cumulative proportion of total days by BEH Scores and BEH Question

BEH Question	Jul 2018 To June 2019				Jul 2019 To June 2020			
	A	B	C	D	A	B	C	D
Cognitive Skills	7.7%	28.1%	37.0%	27.2%	7.1%	27.8%	38.3%	26.8%
Wandering	83.8%	5.0%	3.5%	7.7%	85.4%	4.6%	3.3%	6.7%
Verbal	11.3%	11.0%	19.2%	58.4%	11.7%	11.3%	19.8%	57.2%
Physical	26.3%	15.2%	19.1%	39.4%	27.3%	15.6%	19.6%	37.5%
Depression	34.9%	29.9%	17.8%	17.5%	34.0%	29.8%	18.4%	17.8%

Table 9: Distribution of claim days for the CHC

Jul 2018 to June 2019

Appraised before 1 July 2016

Q11 \ Q12	A	B	C	D
A	0.1%	0.0%	0.3%	0.0%
B	0.2%	0.6%	1.3%	2.7%
C	0.5%	0.4%	1.3%	3.4%
D	0.2%	1.3%	7.4%	2.4%

Rating	Proportion
Nil	1.3%
Low	8.1%
Med	19.3%
High	71.4%

Appraised between 1 July 2016 and 31 December 2016

Q11 \ Q12	A	B	C	D
A	0.0%	0.0%	0.0%	0.0%
B	0.0%	0.3%	0.7%	1.5%
C	0.2%	0.2%	0.7%	1.7%
D	0.1%	0.5%	0.5%	1.6%

Rating	Proportion
Nil	1.1%
Low	9.3%
Med	29.6%
High	60.0%

Appraised on or after 1 January 2017

Q11 \ Q12	A	B	C	D
A - No Assistance	0.3%	0.1%	0.3%	0.2%
B - Assistance	7.5%	6.0%	22.6%	28.6%
C - Injections	0.0%	0.5%	0.6%	3.0%

Rating	Proportion
Nil	0.5%
Low	19.9%
Med	34.3%
High	45.3%

Jul 2019 to June 2020

Appraised before 1 July 2016

Q11 \ Q12	A	B	C	D
A	0.0%	0.0%	0.1%	0.0%
B	0.1%	0.3%	0.8%	1.7%
C	0.3%	0.2%	0.7%	2.2%
D	0.1%	0.7%	4.7%	1.5%

Rating	Proportion
Nil	1.2%
Low	6.9%
Med	17.8%
High	74.1%

Appraised between 1 July 2016 and 31 December 2016

Q11 \ Q12	A	B	C	D
A	0.0%	0.0%	0.0%	0.0%
B	0.0%	0.1%	0.4%	0.9%
C	0.1%	0.1%	0.3%	1.0%
D	0.0%	0.3%	0.3%	1.0%

Rating	Proportion
Nil	0.9%
Low	7.2%
Med	27.2%
High	64.6%

Appraised on or after 1 January 2017

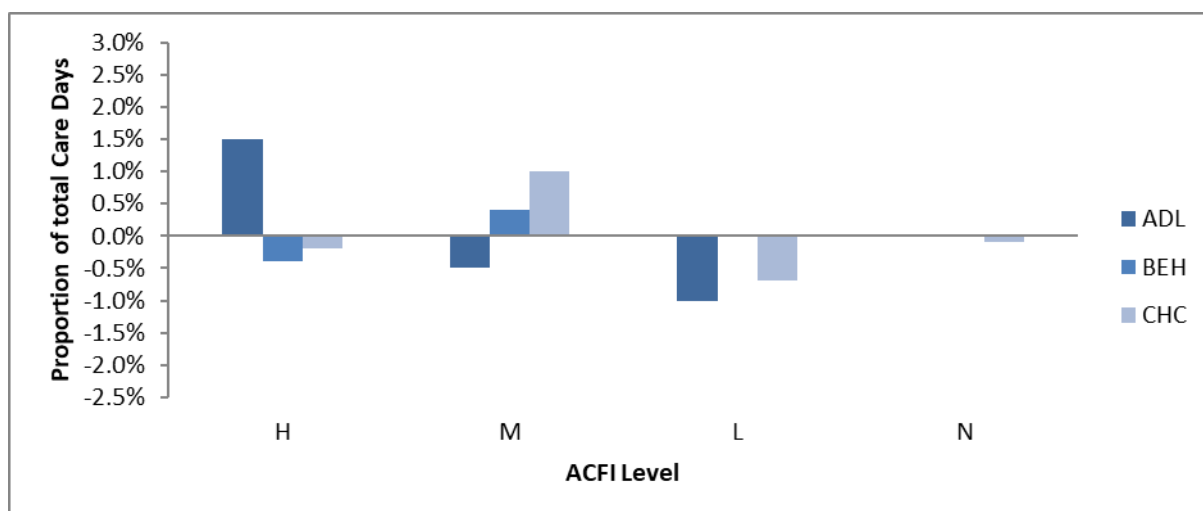
Q11 \ Q12	A	B	C	D
A - No Assistance	0.3%	0.1%	0.4%	0.2%
B - Assistance	8.3%	5.7%	26.6%	35.3%
C - Injections	0.0%	0.6%	0.7%	3.7%

Rating	Proportion
Nil	0.5%
Low	17.6%
Med	34.2%
High	47.7%

Table 10: Actual Average ACFI per day – Monthly and Cumulative

ACFI	Jul 19	Aug 19	Sep 19	Oct 19	Nov 19	Dec 19
Monthly ACFI	\$178.26	\$178.27	\$178.11	\$178.26	\$178.27	\$178.32
Cumulative ACFI	\$178.26	\$178.26	\$178.21	\$178.23	\$178.23	\$178.25
ACFI	Jan 20	Feb 20	Mar 20	Apr 20	May 20	Jun 20
Monthly ACFI	\$178.59	\$178.81	\$179.17	\$179.63	\$180.42	\$181.19
Cumulative ACFI	\$178.30	\$178.36	\$178.45	\$178.57	\$178.74	\$178.94

Figure 3. ACFI Category - Change in Proportion of Total Care Days Year to Date – Year on Year*



*Compares change in proportion of care days for 1 July to 30 June between 2018/19 and 2019/20