



ACFI Monitoring Report – July 2020

Summary

- Average ACFI claims increased in July.
- The solid line in Figure 1 shows the average daily claim rate.
- The impact of the temporary increase in subsidies in the March 2019 quarter is highlighted in the dotted line, while the dashed line shows the impact of temporary funding increase from 1 March 2020 in response to the COVID-19 pandemic.
- The remainder of this report provides analysis based on the changes in claim rates without the temporary increase incorporated.

Figure 1. Average daily ACFI claim per month ¹

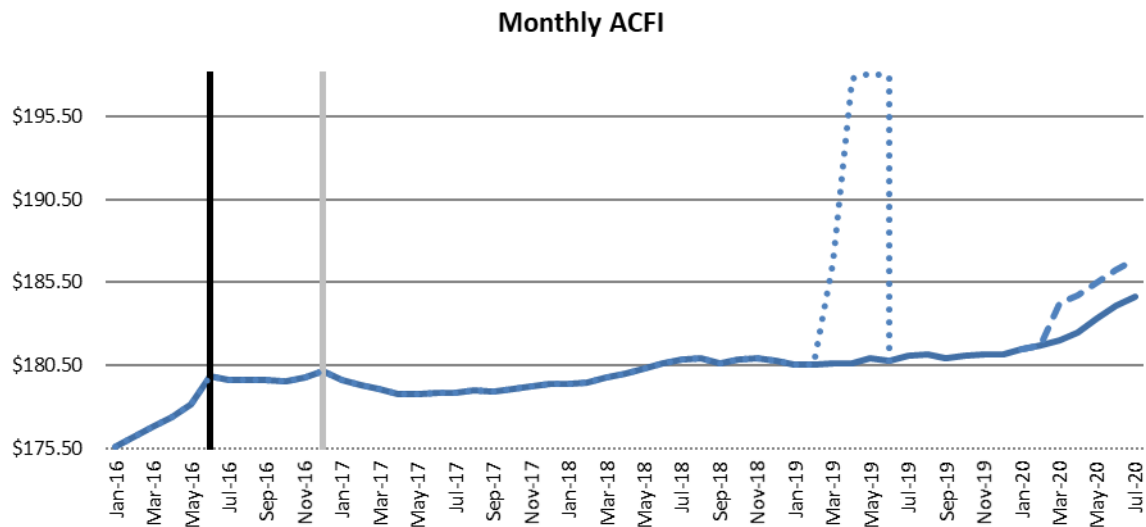


Table 1: Cumulative Daily Average ACFI Subsidies and Growth Rates by ACFI Category

Average ACFI Category Subsidy	July 2019	July 2020	Nominal Growth Over Same Period in Previous Year	Real Growth Over Same Period in Previous Year
ADL	\$96.39	\$99.84	3.6%	2.0%
BEH	\$28.60	\$29.45	3.0%	1.3%
CHC	\$53.27	\$55.36	3.9%	2.3%

1. All \$ values are based on ACFI Question Responses and calculated at 2020/21 ACFI rates

Figure 2. Daily Average \$/Day Trend by Month – 2020/21 Dollars

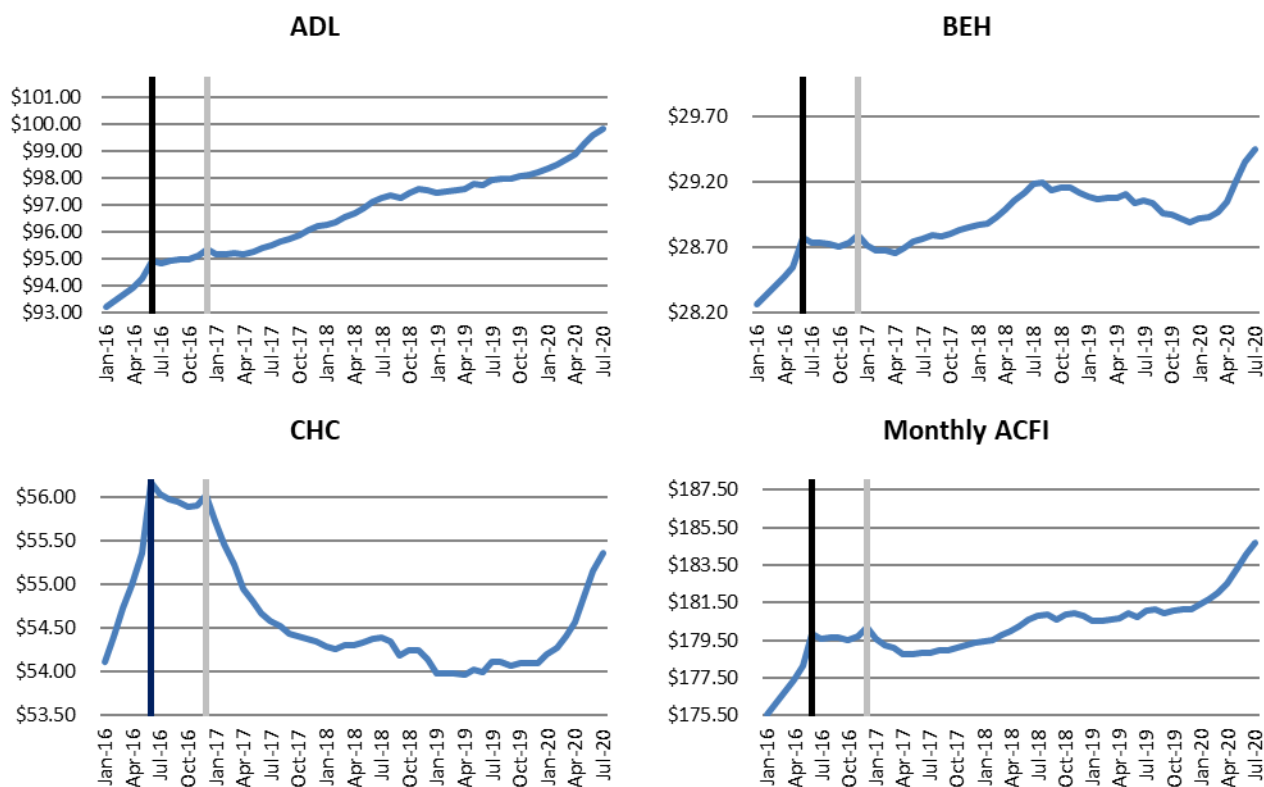


Table 2: Cumulative Daily Average ACFI Subsidies and Growth Rates by State

State	July 2019	July 2020	Nominal Growth Over Same Period in Previous Year	Real Growth Over Same Period in Previous Year
Projected National	\$178.26	\$184.14	3.3%	1.7%
Actual National	\$178.26	\$184.66	3.6%	2.0%
NSW	\$173.80	\$180.95	4.1%	2.5%
VIC	\$184.97	\$190.16	2.8%	1.2%
QLD	\$176.10	\$182.51	3.6%	2.0%
WA	\$184.86	\$190.76	3.2%	1.6%
SA	\$176.62	\$182.83	3.5%	1.9%
TAS	\$170.56	\$179.09	5.0%	3.3%
ACT	\$170.68	\$179.64	5.2%	3.6%
NT	\$166.70	\$184.28	10.5%	8.8%

Table 3: Cumulative Daily Average ACFI Subsidies and Growth Rates by Remoteness

Remoteness	July 2019	July 2020	Nominal Growth Over Same Period in Previous Year	Real Growth Over Same Period in Previous Year
Major Cities of Australia	\$182.08	\$188.05	3.3%	1.7%
Inner Regional Australia	\$171.30	\$178.44	4.2%	2.5%
Outer Regional Australia	\$165.23	\$173.12	4.8%	3.1%
Remote Australia	\$142.30	\$149.80	5.3%	3.6%
Very Remote Australia	\$151.04	\$157.70	4.4%	2.8%

Table 4: Cumulative Daily Average ACFI Subsidies and Growth Rates by Organisation Type

Organisation Type	July 2019	July 2020	Nominal Growth Over Same Period in Previous Year	Real Growth Over Same Period in Previous Year
Not-For-Profit	\$173.91	\$180.94	4.0%	2.4%
For-Profit	\$187.00	\$192.56	3.0%	1.3%
Government	\$154.31	\$157.63	2.2%	0.5%

Table 5: Cumulative Daily Average ACFI Subsidies and Growth Rates by Provider Size

Provider Size*	July 2019	July 2020	Nominal Growth Over Same Period in Previous Year	Real Growth Over Same Period in Previous Year
0-39	\$149.30	\$159.01	6.5%	4.8%
40-74	\$163.23	\$170.51	4.5%	2.8%
75-129	\$170.37	\$176.01	3.3%	1.7%
130-499	\$176.06	\$182.97	3.9%	2.3%
500-999	\$183.04	\$189.56	3.6%	1.9%
1000+	\$184.09	\$189.65	3.0%	1.4%

*Based on full time equivalent residents per year for 2019-20. Only includes providers active during July 2020.

Table 6: Cumulative proportion of total days by ACFI Level and ACFI Category

ACFI Level	ADL			BEH			CHC		
	July 2019	July 2020	Change ADL	July 2019	July 2020	Change BEH	July 2019	July 2020	Change CHC
H	60.5%	63.7%	3.2%	64.0%	65.1%	1.2%	51.8%	54.3%	2.5%
M	29.1%	27.8%	-1.3%	22.0%	22.1%	0.1%	31.4%	31.2%	-0.3%
L	9.8%	8.1%	-1.8%	10.1%	9.4%	-0.7%	16.1%	14.1%	-2.0%
N	0.5%	0.4%	-0.1%	3.9%	3.4%	-0.5%	0.7%	0.5%	-0.2%

Table 7: Cumulative proportion of total days by ADL Scores and ADL Question

ADL Question	July 2019				July 2020			
	A	B	C	D	A	B	C	D
Nutrition	2.84%	13.12%	69.3%	14.7%	2.20%	11.326%	72.0%	14.5%
Mobility	1.63%	2.25%	33.5%	62.6%	1.24%	1.718%	31.6%	65.4%
Personal Hygiene	0.40%	5.11%	8.8%	85.7%	0.32%	4.382%	8.0%	87.3%
Toileting	2.28%	9.59%	15.1%	73.0%	1.75%	8.147%	15.2%	74.9%
Continence	11.14%	2.03%	3.9%	82.9%	9.61%	1.733%	3.4%	85.2%

Table 8: Cumulative proportion of total days by BEH Scores and BEH Question

BEH Question	July 2019				July 2020			
	A	B	C	D	A	B	C	D
Cognitive Skills	7.4%	28.0%	37.679%	26.9%	6.6%	27.1%	39.111%	27.2%
Wandering	84.8%	4.7%	3.385%	7.1%	86.3%	4.3%	3.195%	6.3%
Verbal	11.5%	11.1%	19.413%	58.0%	11.0%	11.2%	20.210%	57.6%
Physical	26.8%	15.4%	19.366%	38.5%	26.5%	15.9%	20.302%	37.2%
Depression	34.4%	29.9%	18.053%	17.6%	33.1%	29.5%	19.093%	18.3%

Table 9: Distribution of claim days for the CHC

July 2019

Appraised before 1 July 2016

Q11 \ Q12	A	B	C	D
A	0.1%	0.0%	0.2%	0.0%
B	0.1%	0.4%	1.0%	2.1%
C	0.4%	0.3%	1.0%	2.7%
D	0.2%	1.0%	5.7%	1.8%

Rating	Proportion
Nil	1.2%
Low	7.2%
Med	18.4%
High	73.2%

Appraised between 1 July 2016 and 31 December 2016

Q11 \ Q12	A	B	C	D
A	0.0%	0.0%	0.0%	0.0%
B	0.0%	0.2%	0.5%	1.2%
C	0.1%	0.1%	0.4%	1.3%
D	0.0%	0.3%	0.3%	1.2%

Rating	Proportion
Nil	1.0%
Low	8.0%
Med	28.1%
High	62.8%

Appraised on or after 1 January 2017

Q11 \ Q12	A	B	C	D
A - No Assistance	0.3%	0.1%	0.4%	0.2%
B - Assistance	8.2%	5.9%	25.2%	32.4%
C - Injections	0.0%	0.6%	0.7%	3.4%

Rating	Proportion
Nil	0.5%
Low	18.8%
Med	34.4%
High	46.3%

July 2020

Appraised before 1 July 2016

Q11 \ Q12	A	B	C	D
A	0.0%	0.0%	0.1%	0.0%
B	0.1%	0.2%	0.5%	1.3%
C	0.2%	0.1%	0.5%	1.7%
D	0.1%	0.5%	3.6%	1.1%

Rating	Proportion
Nil	1.1%
Low	6.4%
Med	16.7%
High	75.8%

Appraised between 1 July 2016 and 31 December 2016

Q11 \ Q12	A	B	C	D
A	0.0%	0.0%	0.0%	0.0%
B	0.0%	0.1%	0.2%	0.7%
C	0.1%	0.0%	0.2%	0.8%
D	0.0%	0.2%	0.2%	0.8%

Rating	Proportion
Nil	0.7%
Low	6.1%
Med	25.2%
High	67.9%

Appraised on or after 1 January 2017

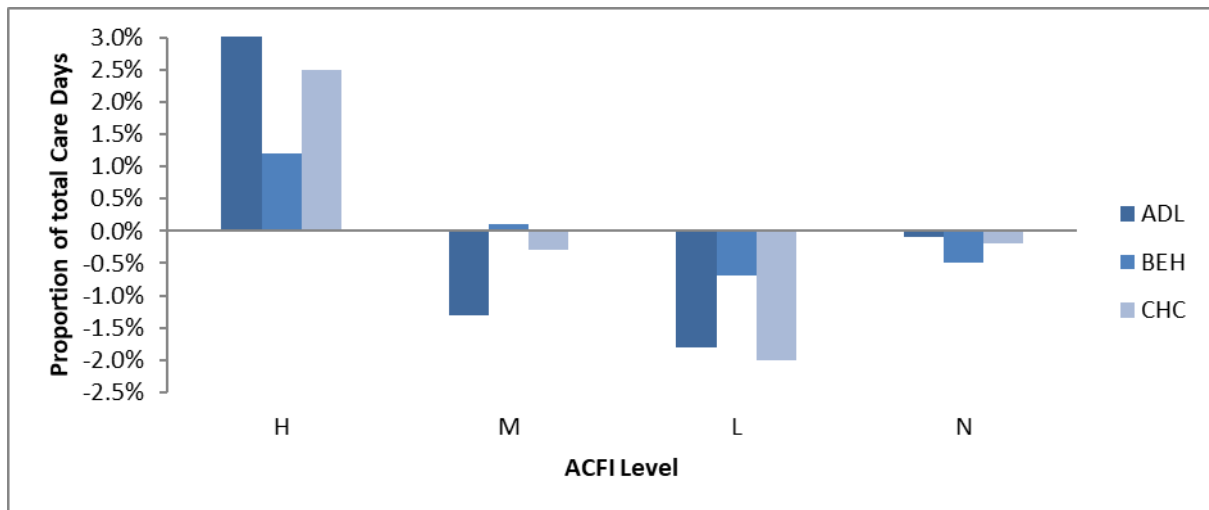
Q11 \ Q12	A	B	C	D
A - No Assistance	0.3%	0.1%	0.4%	0.2%
B - Assistance	7.8%	5.0%	27.2%	40.1%
C - Injections	0.0%	0.6%	0.6%	4.1%

Rating	Proportion
Nil	0.4%
Low	15.3%
Med	33.1%
High	51.2%

Table 10: Actual Average ACFI per day – Monthly and Cumulative

ACFI	Jul 20	Aug 20	Sep 20	Oct 20	Nov 20	Dec 20
Monthly ACFI	\$184.66					
Cumulative ACFI	\$184.66					
ACFI	Jan 21	Feb 21	Mar 21	Apr 21	May 21	Jun 21
Monthly ACFI						
Cumulative ACFI						

Figure 3. ACFI Category - Change in Proportion of Total Care Days Year to Date – Year on Year*



*Compares change in proportion of care days for 1 July to 30 June between 2019/20 and 2020/21