



ACFI Monitoring Report – July 2019

Summary

- Average ACFI claims fell in July due to cessation of the Budget 2019 measure that temporarily increased subsidies by \$320 million from 20 March 2019 to 30 June 2019 - representing an increase in subsidies of 9.5% over this period
- The impact of the temporary increase is highlighted in Figure 1 in the dashed line, and in Table 1.
- The average daily claim rate without the impact of the temporary increase is shown in the solid line in Figure 1 and in Table 2.
- The remainder of this report provides analysis based on the changes in claim rates without the temporary increase incorporated.

Figure 1. Average daily ACFI claim per month ¹

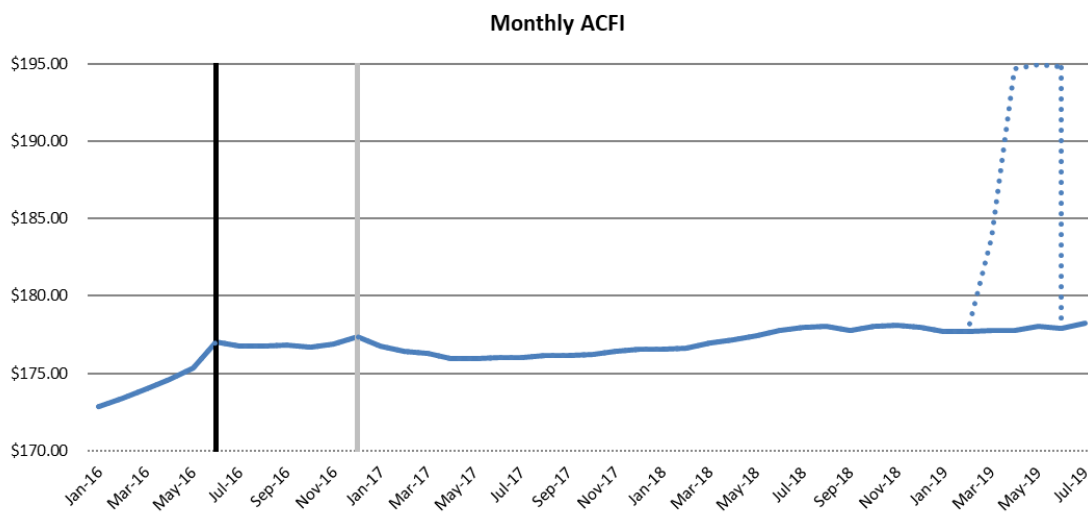


Table 1: Average ACFI per day with Budget 2019 subsidy increase

ACFI	Mar-19	Apr-19	May-19	Jun-19	Jul-19
Monthly	\$183.74	\$194.69	\$194.98	\$194.81	\$178.26
Cumulative	\$178.55	\$180.15	\$181.53	\$182.63	\$178.26

Table 2: Average ACFI per day without Budget 2019 subsidy increase

ACFI	Mar-19	Apr-19	May-19	Jun-19	Jul-19
Monthly	\$177.75	\$177.79	\$178.07	\$177.91	\$178.26
Cumulative	\$177.87	\$177.86	\$177.88	\$177.88	\$178.26

1. All \$ values are based on ACFI Question Responses and calculated at 2019/20 ACFI rates

Table 3: Cumulative Daily Average ACFI Subsidies and Growth Rates by ACFI Category

Average ACFI Category Subsidy	Jul 2018	Jul 2019	Nominal Growth Over Same Period in Previous Year	Real Growth Over Same Period in Previous Year
ADL	\$94.32	\$96.39	2.2%	0.8%
BEH	\$28.29	\$28.60	1.1%	-0.3%
CHC	\$52.73	\$53.27	1.0%	-0.4%

Figure 2. Daily Average \$/Day Trend by Month – 2019/20 Dollars

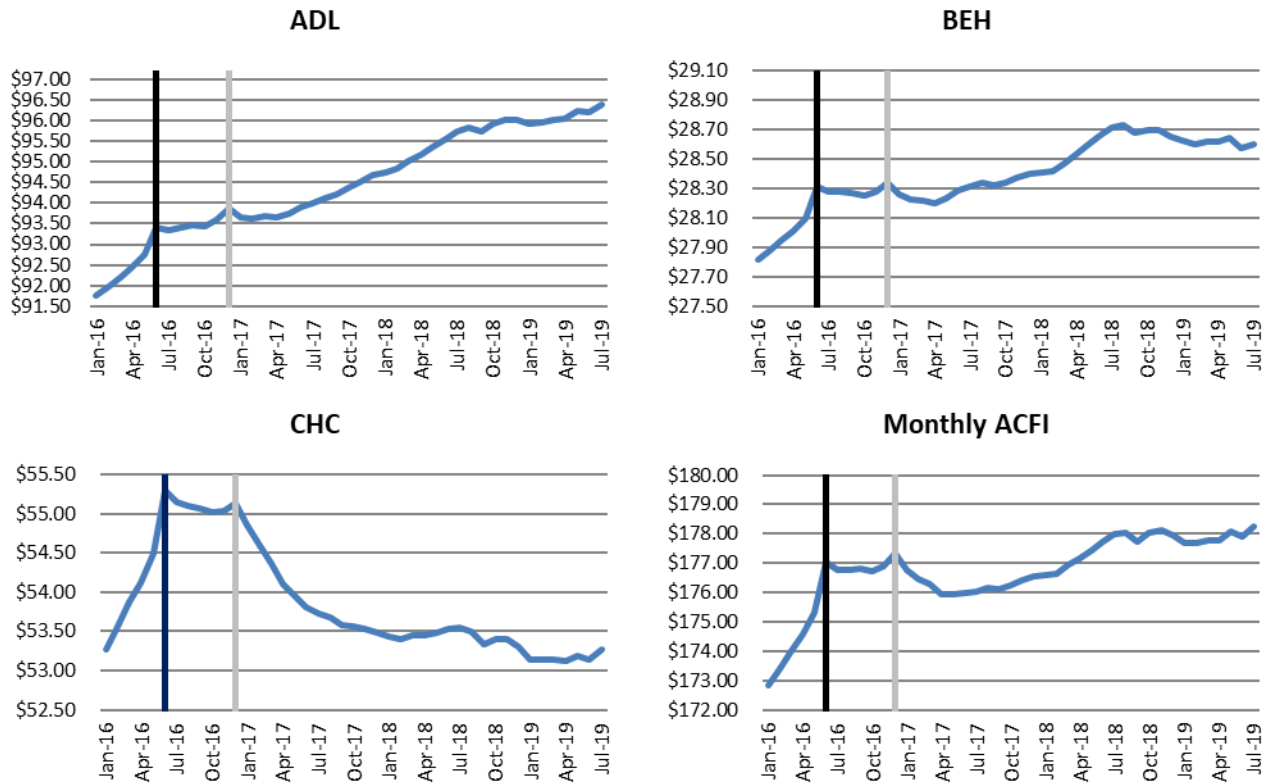


Table 4: Cumulative Daily Average ACFI Subsidies and Growth Rates by State

State	Jul 2018	Jul 2019	Nominal Growth Over Same Period in Previous Year	Real Growth Over Same Period in Previous Year
Projected National	\$175.34	\$178.87	2.0%	0.8%
Actual National	\$175.34	\$178.26	1.7%	0.3%
NSW	\$171.24	\$173.80	1.5%	0.1%
VIC	\$181.48	\$184.97	1.9%	0.5%
QLD	\$173.20	\$176.10	1.7%	0.3%
WA	\$182.17	\$184.86	1.5%	0.1%
SA	\$173.69	\$176.62	1.7%	0.3%
TAS	\$168.86	\$170.56	1.0%	-0.4%
ACT	\$168.14	\$170.68	1.5%	0.1%
NT	\$167.69	\$166.70	-0.6%	-2.0%

Table 5: Cumulative Daily Average ACFI Subsidies and Growth Rates by Remoteness

Remoteness	Jul 2018	Jul 2019	Nominal Growth Over Same Period in Previous Year	Real Growth Over Same Period in Previous Year
Major Cities of Australia	\$178.92	\$182.08	1.8%	0.4%
Inner Regional Australia	\$168.48	\$171.30	1.7%	0.3%
Outer Regional Australia	\$164.43	\$165.23	0.5%	-0.9%
Remote Australia	\$142.36	\$142.30	-0.0%	-1.4%
Very Remote Australia	\$151.99	\$151.04	-0.6%	-2.0%

Table 6: Cumulative Daily Average ACFI Subsidies and Growth Rates by Organisation Type

Organisation Type	Jul 2018	Jul 2019	Nominal Growth Over Same Period in Previous Year	Real Growth Over Same Period in Previous Year
Not-For-Profit	\$170.36	\$173.91	2.1%	0.7%
For-Profit	\$184.94	\$187.00	1.1%	-0.3%
Government	\$153.15	\$154.31	0.8%	-0.6%

Table 7: Cumulative Daily Average ACFI Subsidies and Growth Rates by Provider Size

Provider Size*	Jul 2018	Jul 2019	Nominal Growth Over Same Period in Previous Year	Real Growth Over Same Period in Previous Year
0-39	\$147.53	\$149.30	1.2%	-0.2%
40-74	\$160.98	\$163.23	1.4%	-0.0%
75-129	\$167.61	\$170.37	1.6%	0.2%
130-499	\$172.29	\$176.06	2.2%	0.8%
500-999	\$178.89	\$183.04	2.3%	0.9%
1000+	\$181.79	\$184.09	1.3%	-0.1%

*Based on full time equivalent residents per year for 2018-19. Only includes providers active during July 2019.

Table 8: Cumulative proportion of total days by ACFI Level and ACFI Category

ACFI Level	ADL			BEH			CHC		
	Jul 2018	Jul 2019	Change ADL	Jul 2018	Jul 2019	Change BEH	Jul 2018	Jul 2019	Change CHC
H	59.3%	60.5%	1.2%	64.3%	64.0%	-0.3%	53.1%	51.8%	-1.3%
M	29.6%	29.1%	-0.4%	21.8%	22.0%	0.2%	30.0%	31.4%	1.4%
L	10.6%	9.8%	-0.8%	10.1%	10.1%	0.0%	16.1%	16.1%	0.0%
N	0.5%	0.5%	0.0%	3.8%	3.9%	0.1%	0.8%	0.7%	-0.2%

Table 9: Cumulative proportion of total days by ADL Scores and ADL Question

ADL Question	Jul 2018				Jul 2019			
	A	B	C	D	A	B	C	D
Nutrition	3.1%	13.9%	67.5%	15.5%	2.8%	13.1%	69.3%	14.7%
Mobility	1.7%	2.7%	34.3%	61.3%	1.6%	2.3%	33.5%	62.6%
Personal Hygiene	0.4%	5.3%	9.0%	85.3%	0.4%	5.1%	8.8%	85.7%
Toileting	2.7%	10.2%	14.6%	72.5%	2.3%	9.6%	15.1%	73.0%
Continence	11.8%	2.3%	4.2%	81.7%	11.1%	2.0%	3.9%	82.9%

Table 10: Cumulative proportion of total days by BEH Scores and BEH Question

BEH Question	Jul 2018				Jul 2019			
	A	B	C	D	A	B	C	D
Cognitive Skills	8.0%	28.0%	36.5%	27.5%	7.4%	28.0%	37.7%	26.9%
Wandering	82.8%	5.2%	3.7%	8.3%	84.8%	4.7%	3.4%	7.1%
Verbal	11.2%	11.0%	19.1%	58.7%	11.5%	11.1%	19.4%	58.0%
Physical	25.9%	15.1%	18.8%	40.3%	26.8%	15.4%	19.4%	38.5%
Depression	35.1%	29.8%	17.7%	17.4%	34.4%	29.9%	18.1%	17.6%

Table 11: Distribution of claim days for the CHC

Jul 2018

Appraised before 1 July 2016

Q11 \ Q12	A	B	C	D
A	0.1%	0.0%	0.3%	0.1%
B	0.2%	0.8%	1.8%	3.4%
C	0.7%	0.6%	1.7%	4.3%
D	0.3%	1.7%	9.0%	2.9%

Rating	Proportion
Nil	1.4%
Low	8.6%
Med	19.9%
High	70.1%

Appraised between 1 July 2016 and 31 December 2016

Q11 \ Q12	A	B	C	D
A	0.0%	0.0%	0.0%	0.0%
B	0.1%	0.4%	0.9%	1.9%
C	0.3%	0.3%	0.9%	2.1%
D	0.1%	0.6%	0.6%	2.0%

Rating	Proportion
Nil	1.2%
Low	10.2%
Med	30.5%
High	58.1%

Appraised on or after 1 January 2017

Q11 \ Q12	A	B	C	D
A - No Assistance	0.2%	0.1%	0.3%	0.1%
B - Assistance	6.6%	5.8%	19.9%	24.8%
C - Injections	0.0%	0.5%	0.6%	2.7%

Rating	Proportion
Nil	0.5%
Low	20.6%
Med	34.3%
High	44.6%

Jul 2019

Appraised before 1 July 2016

Q11 \ Q12	A	B	C	D
A	0.1%	0.0%	0.2%	0.0%
B	0.1%	0.4%	1.0%	2.1%
C	0.4%	0.3%	1.0%	2.7%
D	0.2%	1.0%	5.7%	1.8%

Rating	Proportion
Nil	1.2%
Low	7.2%
Med	18.4%
High	73.2%

Appraised between 1 July 2016 and 31 December 2016

Q11 \ Q12	A	B	C	D
A	0.0%	0.0%	0.0%	0.0%
B	0.0%	0.2%	0.5%	1.2%
C	0.1%	0.1%	0.4%	1.3%
D	0.0%	0.3%	0.3%	1.2%

Rating	Proportion
Nil	1.0%
Low	8.0%
Med	28.1%
High	62.8%

Appraised on or after 1 January 2017

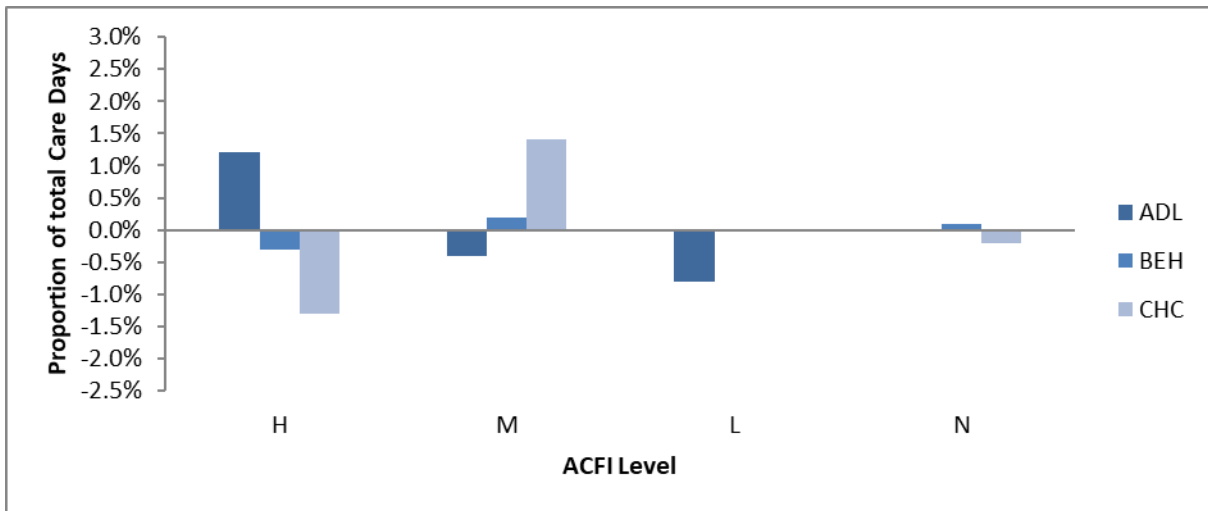
Q11 \ Q12	A	B	C	D
A - No Assistance	0.3%	0.1%	0.4%	0.2%
B - Assistance	8.2%	5.9%	25.2%	32.4%
C - Injections	0.0%	0.6%	0.7%	3.4%

Rating	Proportion
Nil	0.5%
Low	18.8%
Med	34.4%
High	46.3%

Table 12: Actual Average ACFI per day – Monthly and Cumulative

ACFI	Jul 19	Aug 19	Sep 19	Oct 19	Nov 19	Dec 19
Monthly ACFI	\$178.26					
Cumulative ACFI	\$178.26					
ACFI	Jan 20	Feb 20	Mar 20	Apr 20	May 20	Jun 20
Monthly ACFI						
Cumulative ACFI						

Figure 3. ACFI Category - Change in Proportion of Total Care Days Year to Date – Year on Year*



*Compares change in proportion of care days for 1 July to 31 July between 2018/19 and 2019/20