



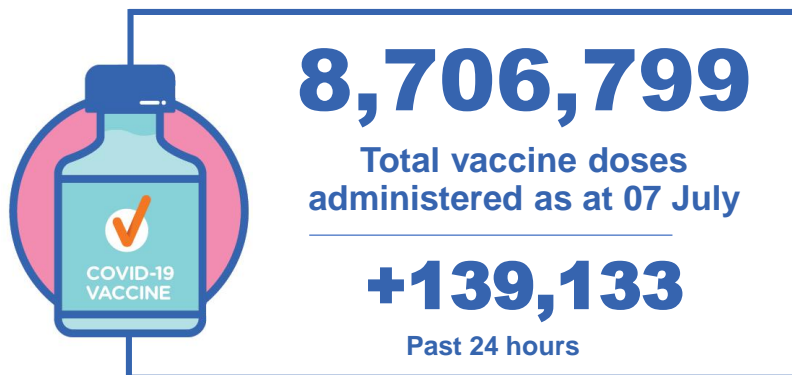
Australian Government
Operation COVID Shield

COVID-19 Vaccine Roll-out

08 July 2021

Data as at:
07 Jul 2021

Total vaccine doses



Commonwealth vaccine doses
4,951,759
(+85,823 last 24 hours)



Commonwealth vaccine doses
in primary care
4,497,564
(+82,885 last 24 hours)



Commonwealth vaccine doses in
aged and disability facilities
454,195
(+2,938 last 24 hours)



3,755,040 (+53,310 past 24 hours)

Total vaccine doses administered in
State and Territory clinics as at 07 July

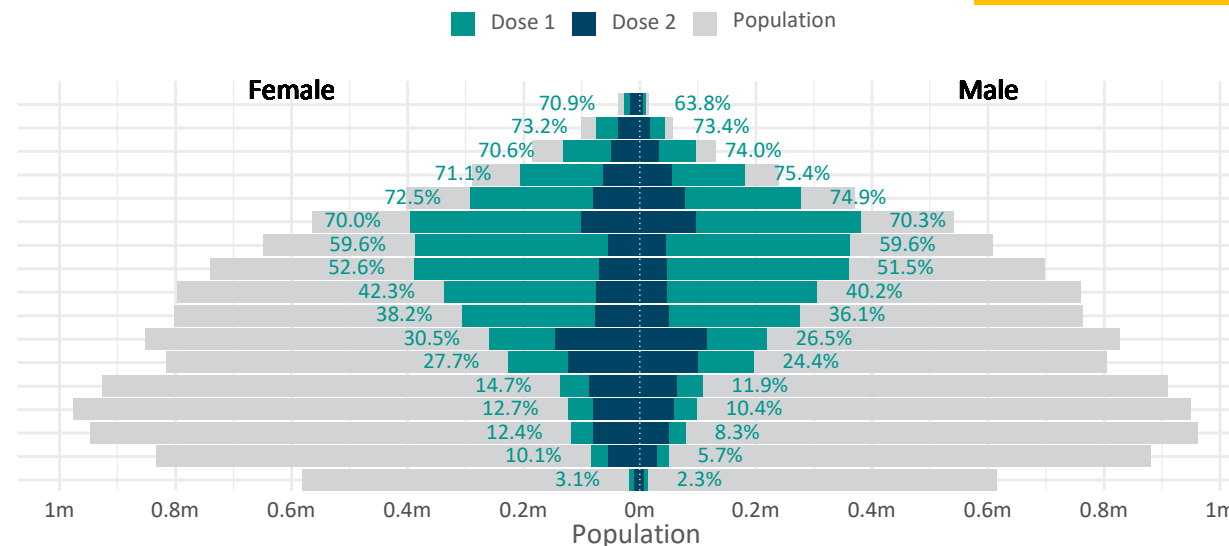


Data as at:
07 Jul 2021

Doses by age and sex

First and second doses by age and sex, using ABS age brackets

Age	Dose 1	Dose 2
95+	36,487 (69.0%)	22,161 (41.9%)
90-94	116,208 (73.4%)	55,115 (34.8%)
85-89	227,975 (72.1%)	81,649 (25.8%)
80-84	386,338 (73.1%)	117,521 (22.2%)
75-79	570,260 (73.7%)	156,593 (20.2%)
70-74	775,947 (70.2%)	197,954 (17.9%)
65-69	750,281 (59.6%)	98,602 (7.8%)
60-64	748,520 (52.1%)	116,708 (8.1%)
55-59	643,165 (41.3%)	122,323 (7.9%)
50-54	582,425 (37.2%)	127,156 (8.1%)
45-49	478,097 (28.5%)	261,940 (15.6%)
40-44	422,320 (26.1%)	223,490 (13.8%)
35-39	244,618 (13.3%)	150,053 (8.2%)
30-34	223,396 (11.6%)	138,949 (7.2%)
25-29	197,736 (10.4%)	129,706 (6.8%)
20-24	134,673 (7.9%)	83,732 (4.9%)
16-19	31,877 (2.7%)	15,517 (1.3%)



DOH (Australian Immunisation Register), ABS (Population)

	AUS	ACT	NSW	NT	QLD	SA	TAS	VIC	WA
16 and over - dose 1	6,570,323	147,570	1,928,105	74,057	1,253,723	475,949	173,041	1,889,341	628,863
16 and over - dose 2	2,099,169	55,752	629,961	34,959	417,238	147,131	64,255	573,622	176,557
16 and over - population	20,619,959*	344,037	6,565,651	190,571	4,112,707	1,440,400	440,172	5,407,574	2,114,978
16 and over % with dose 1	31.86%	42.89%	29.37%	38.86%	30.48%	33.04%	39.31%	34.94%	29.73%
16 and over % with dose 2	10.18%	16.21%	9.59%	18.34%	10.15%	10.21%	14.60%	10.61%	8.35%
50 and over - dose 1	4,837,606	91,157	1,443,154	35,513	941,472	358,923	136,235	1,350,085	481,296
50 and over - dose 2	1,095,782	22,742	350,595	12,693	247,803	78,263	40,134	241,352	102,338
50 and over - population	8,749,703	127,802	2,807,793	62,280	1,758,855	674,384	220,036	2,211,211	885,370
50 and over % with dose 1	55.29%	71.33%	51.40%	57.02%	53.53%	53.22%	61.91%	61.06%	54.36%
50 and over % with dose 2	12.52%	17.79%	12.49%	20.38%	14.09%	11.61%	18.24%	10.91%	11.56%
70 and over - dose 1	2,113,215	35,946	662,869	8,685	421,126	170,454	59,827	553,094	201,294
70 and over - dose 2	630,993	12,501	200,261	4,044	138,721	48,521	21,651	147,447	57,927
70 and over - population	2,934,706	39,946	962,606	12,343	577,767	240,514	77,155	763,519	280,281
70 and over % with dose 1	72.01%	89.99%	68.86%	70.36%	72.89%	70.87%	77.54%	72.44%	71.82%
70 and over % with dose 2	21.50%	31.29%	20.80%	32.76%	24.01%	20.17%	28.06%	19.31%	20.67%

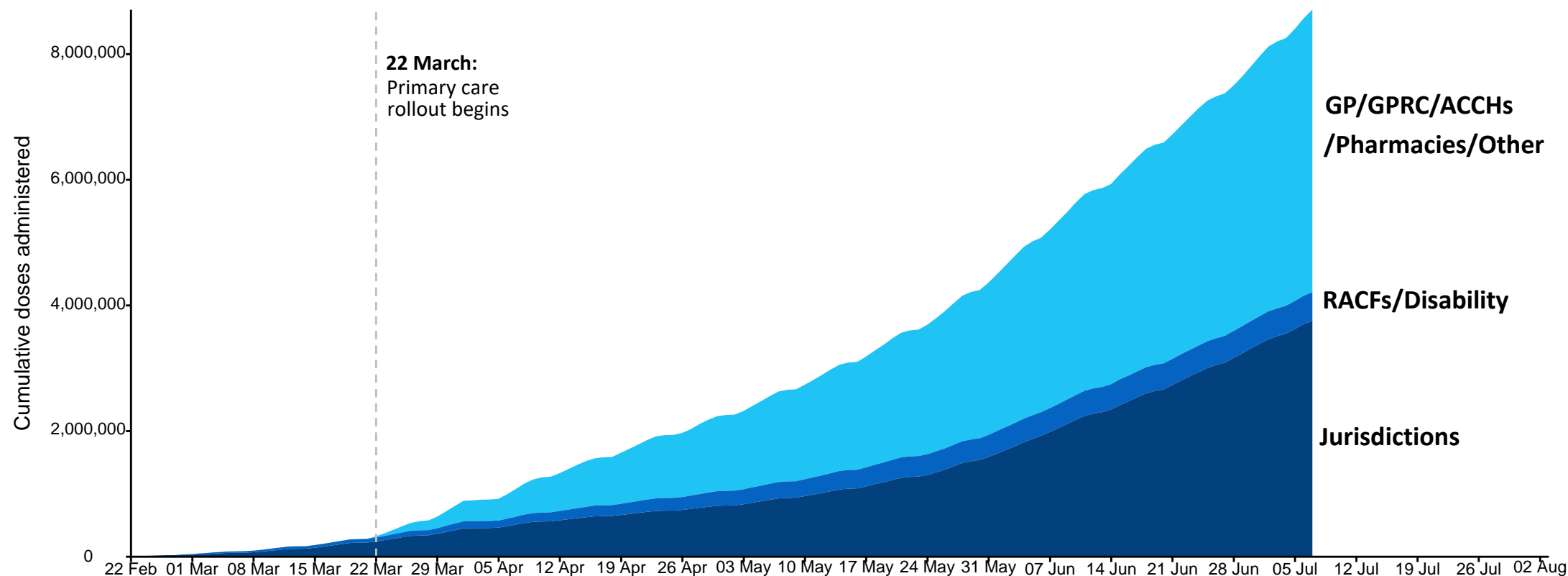
*National population will not equal sum of listed jurisdictions due to a small number of people counted in national population residing in some 'other' territories

Cumulative doses administered by channel

Data as at:
07 Jul 2021

Australia's COVID-19
Vaccine Roadmap

Cumulative doses administered (07 Jul): **8,706,799**



Source: Department of Health
Data as at 07 Jul

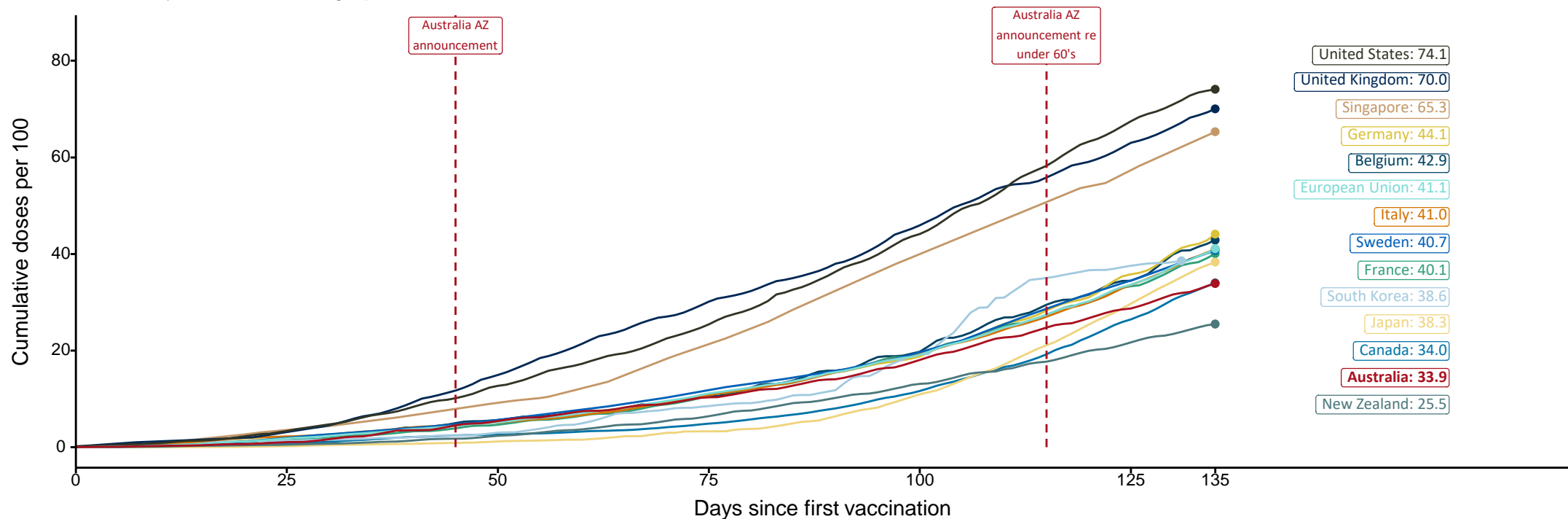
International comparisons at equivalent stages of rollout (Day 135)

Data as at:
07 Jul 2021

Australia's COVID-19
Vaccine Roadmap

Cumulative doses administered (07 Jul): **8,706,799**

The x-axis is truncated at the length of Australia's vaccination program. Countries with intermittent reporting have had their doses per 100 imputed to Australia's current stage of rollout. Israel excluded as it is beyond scale of the graph



Source: Department of Health (Australia), Our World in Data (international)
Latest data: 07 July

Data as at:
07 Jul 2021

Commonwealth aged care doses administered



Aged care and residential
disability doses administered

242,682

First doses

211,513

Second doses

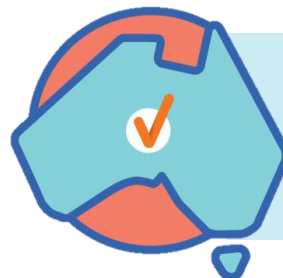
Residential aged care
facilities

2,566

Sites visited for first doses

2,566

Sites visited for second doses



454,195

(+2,938 last 24 hours)

Total vaccine doses administered in aged
care and disability facilities as at 07 July

Number of doses administered as part of the Commonwealth aged and disability care rollout

NSW

142,693

(+1,240 last
24 hours)

VIC

125,943

(+614 last
24 hours)

QLD

83,967

(+394 last
24 hours)

WA

40,455

(+231 last
24 hours)

TAS

13,123

(+125 last
24 hours)

SA

37,513

(+268 last
24 hours)

ACT

7,488

(+6 last
24 hours)

NT

3,013

(+60 last
24 hours)

Data as at:
07 Jul 2021

Commonwealth primary care doses administered



Primary Care vaccine administration sites*

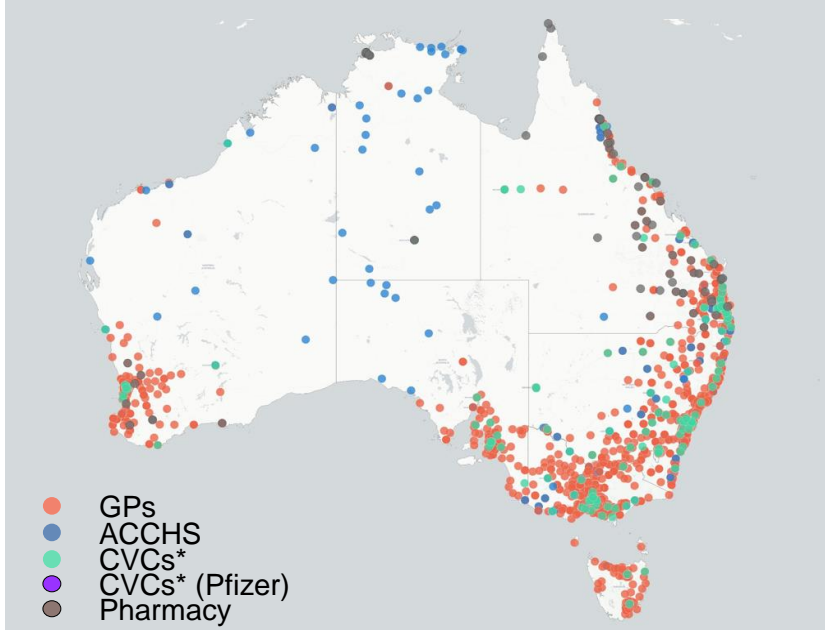
5,115	135	62	158	65
GPs	CVCs	CVCs (Pfizer)	ACCHS	Pharmacy



4,497,564 (+82,885 last 24 hours)

Total vaccine doses administered in primary care settings as at 07 July

Primary Care vaccine administration sites as at week of 5 July



Number of doses administered as part of the Commonwealth primary care rollout

NSW
1,430,958
(+29,642 last 24 hours)

VIC
1,155,177
(+16,919 last 24 hours)

QLD
945,424
(+20,064 last 24 hours)

WA
422,296
(+7,054 last 24 hours)

TAS
106,659
(+1,377 last 24 hours)

SA
324,414
(+5,998 last 24 hours)

ACT
77,958
(+922 last 24 hours)

NT
34,678
(+909 last 24 hours)