



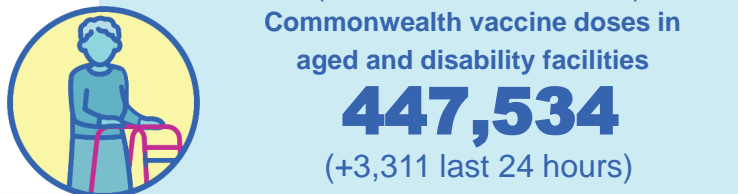
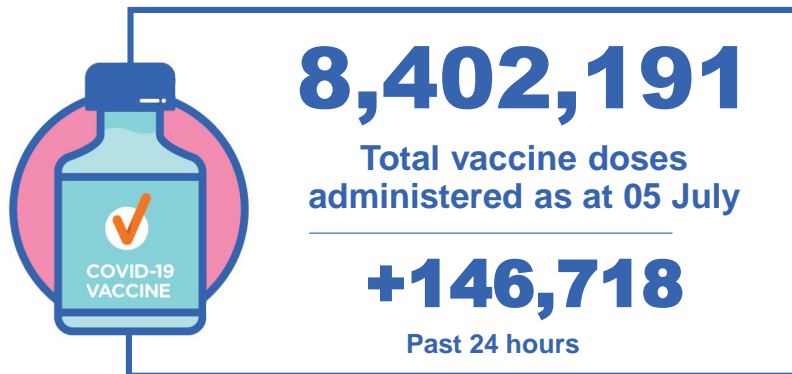
Australian Government
Operation COVID Shield

COVID-19 Vaccine Roll-out

06 July 2021

Data as at:
05 Jul 2021

Total vaccine doses



3,621,886 (+71,627 past 24 hours)

Total vaccine doses administered in State and Territory clinics as at 05 July



* Source: Australian Immunisation Register and self reported data. Numbers are calculated as differences in daily cumulative reported numbers to allow for historical corrections in all self-reported data sources.

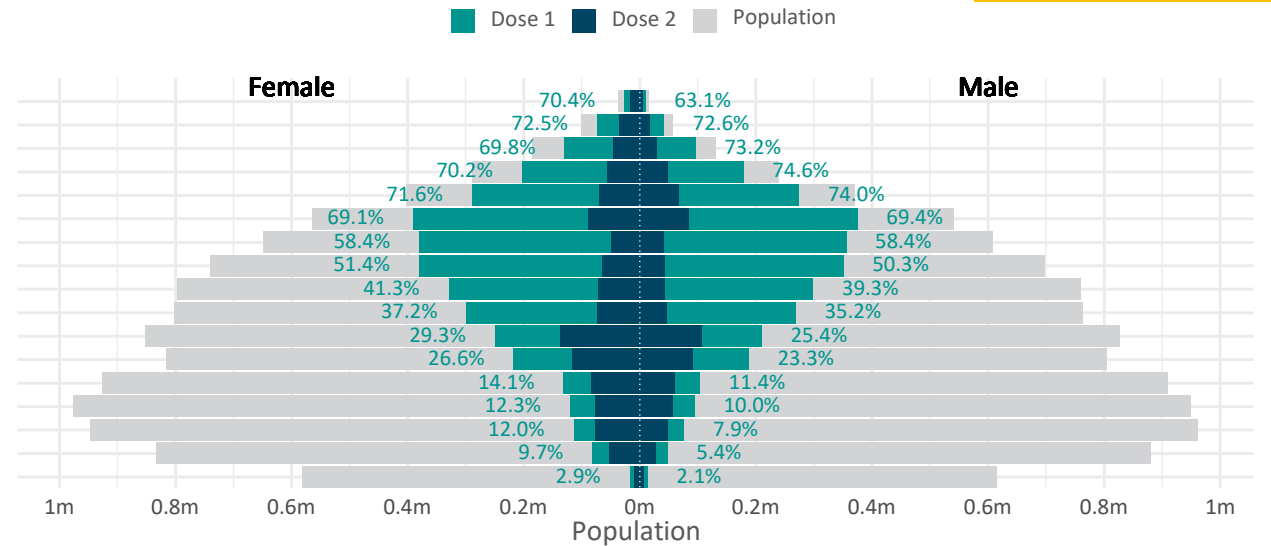
Data as at:
05 Jul 2021

Doses by age and sex

First and second doses by age and sex, using ABS age brackets

	AUS	16+	50+	70+
Dose 1	31.12% (6,416,491 doses / 20,619,959 people)	54.29% (4,750,559 doses / 8,749,703 people)	71.14% (2,087,874 doses / 2,934,706 people)	
Dose 2	9.43% (1,943,939 doses / 20,619,959 people)	11.38% (995,434 doses / 8,749,703 people)	19.24% (564,672 doses / 2,934,706 people)	

Age	Dose 1	Dose 2
95+	36,167 (68.4%)	21,463 (40.6%)
90-94	115,060 (72.6%)	52,150 (32.9%)
85-89	225,353 (71.3%)	74,992 (23.7%)
80-84	381,843 (72.3%)	104,617 (19.8%)
75-79	563,496 (72.8%)	137,546 (17.8%)
70-74	765,955 (69.3%)	173,904 (15.7%)
65-69	735,953 (58.5%)	88,589 (7.0%)
60-64	731,698 (50.9%)	107,607 (7.5%)
55-59	627,859 (40.4%)	114,585 (7.4%)
50-54	567,175 (36.3%)	119,981 (7.7%)
45-49	459,672 (27.4%)	244,085 (14.6%)
40-44	404,833 (25.0%)	207,319 (12.8%)
35-39	235,325 (12.8%)	143,772 (7.8%)
30-34	215,113 (11.2%)	133,456 (6.9%)
25-29	191,206 (10.0%)	125,005 (6.6%)
20-24	129,558 (7.6%)	80,292 (4.7%)
16-19	30,225 (2.5%)	14,576 (1.2%)



DOH (Australian Immunisation Register), ABS (Population)

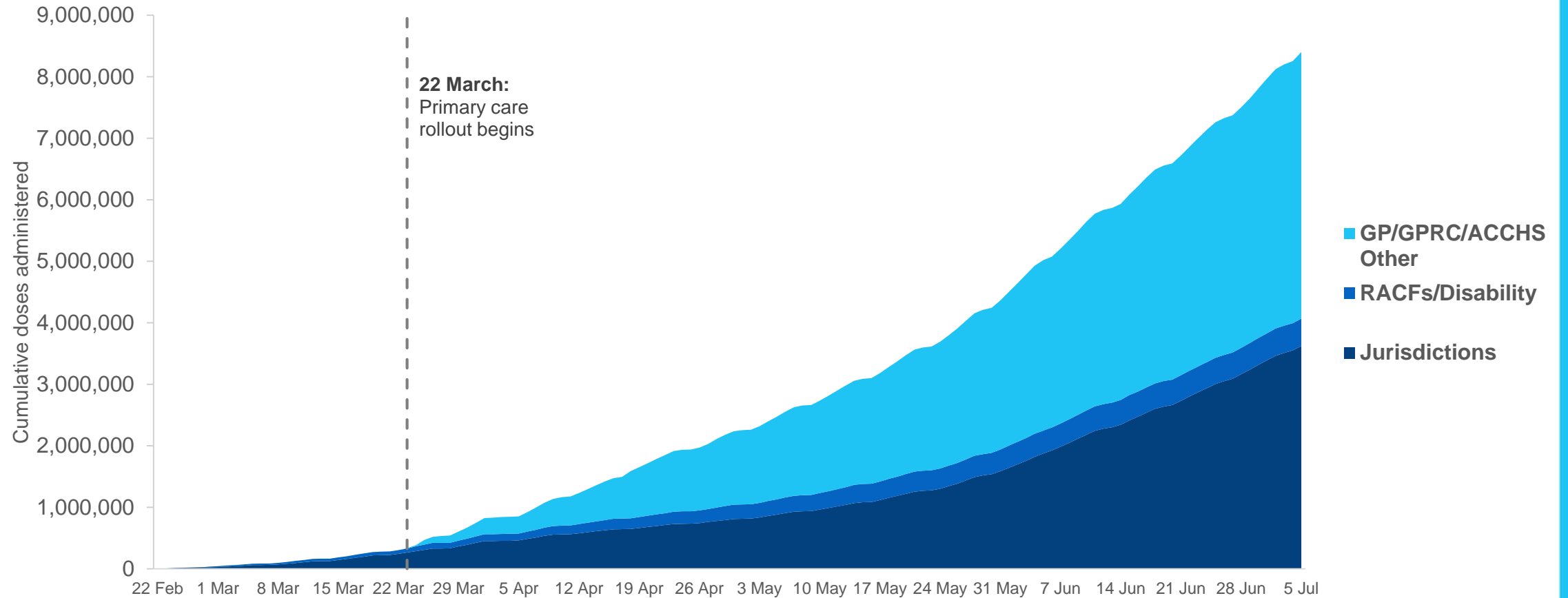
	AUS	ACT	NSW	NT	QLD	SA	TAS	VIC	WA
16 and over - dose 1	6,416,491	143,625	1,868,111	71,768	1,224,212	464,744	171,894	1,861,460	610,991
16 and over - dose 2	1,943,939	53,654	586,674	33,031	379,607	135,215	62,548	528,070	165,426
16 and over - population	20,619,959*	344,037	6,565,651	190,571	4,112,707	1,440,400	440,172	5,407,574	2,114,978
16 and over % with dose 1	31.12%	41.75%	28.45%	37.66%	29.77%	32.26%	39.05%	34.42%	28.89%
16 and over % with dose 2	9.43%	15.60%	8.94%	17.33%	9.23%	9.39%	14.21%	9.77%	7.82%
50 and over - dose 1	4,750,559	89,184	1,408,144	34,650	922,582	352,037	135,275	1,335,787	473,122
50 and over - dose 2	995,434	21,349	318,755	11,894	221,842	70,466	38,494	219,123	93,641
50 and over - population	8,749,703	127,802	2,807,793	62,280	1,758,855	674,384	220,036	2,211,211	885,370
50 and over % with dose 1	54.29%	69.78%	50.15%	55.64%	52.45%	52.20%	61.48%	60.41%	53.44%
50 and over % with dose 2	11.38%	16.70%	11.35%	19.10%	12.61%	10.45%	17.49%	9.91%	10.58%
70 and over - dose 1	2,087,874	35,597	651,944	8,547	415,288	168,581	59,525	549,052	199,419
70 and over - dose 2	564,672	11,586	178,712	3,657	123,079	43,059	20,434	132,417	51,802
70 and over - population	2,934,706	39,946	962,606	12,343	577,767	240,514	77,155	763,519	280,281
70 and over % with dose 1	71.14%	89.11%	67.73%	69.25%	71.88%	70.09%	77.15%	71.91%	71.15%
70 and over % with dose 2	19.24%	29.00%	18.57%	29.63%	21.30%	17.90%	26.48%	17.34%	18.48%

*National population will not equal sum of listed jurisdictions due to a small number of people counted in national population residing in some 'other' territories

Cumulative doses administered by channel

Data as at:
05 Jul 2021

Cumulative doses administered (05 Jul): **8,402,191**



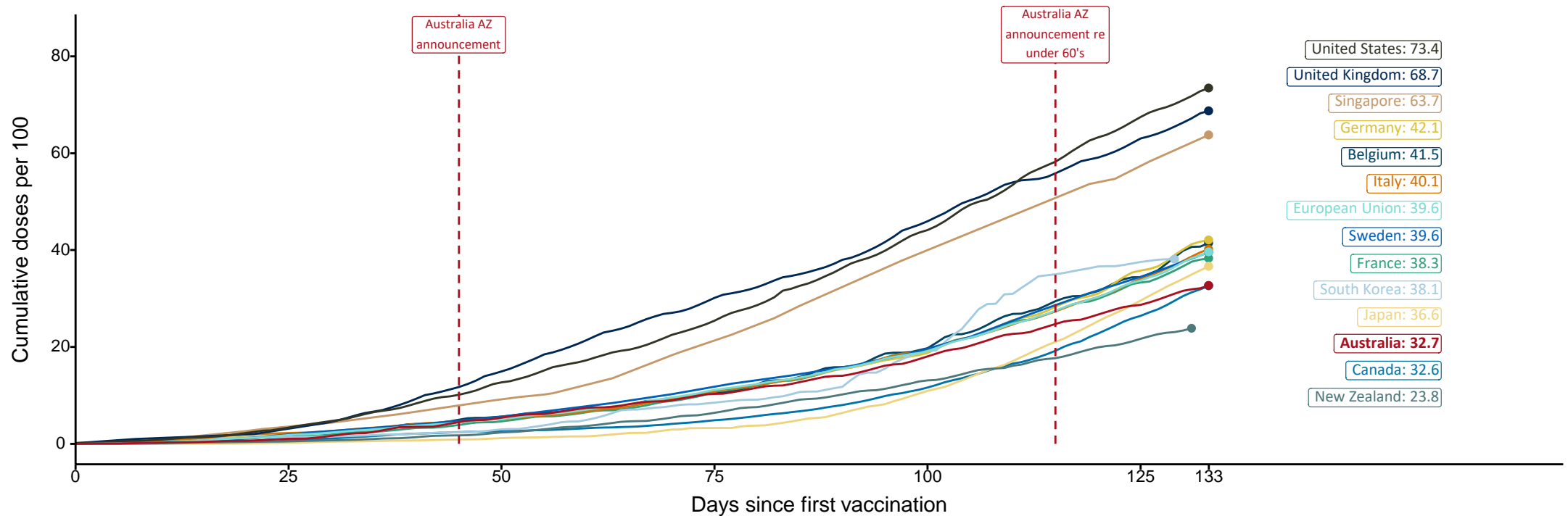
Source: Department of Health
Data as at 05 Jul

International comparisons at equivalent stages of rollout (Day 133)

Data as at: 05 Jul 2021

Cumulative doses administered (05 Jul): 8,402,191

The x-axis is truncated at the length of Australia's vaccination program. Countries with intermittent reporting have had their doses per 100 imputed to Australia's current stage of rollout. Israel excluded as it is beyond scale of the graph.



Source: Department of Health (Australia), Our World in Data (international)
Latest data: 05 July

Data as at:
05 Jul 2021

Commonwealth aged care doses administered



Aged care and residential
disability doses administered

238,545

First doses

208,989

Second doses

Residential aged care
facilities

2,566

Sites visited for first doses

2,565

Sites visited for second doses



447,534

(+3,311 last 24 hours)

Total vaccine doses administered in aged
care and disability facilities as at 05 July

Number of doses administered as part of the Commonwealth aged and disability care rollout

NSW
140,508

(+832 last
24 hours)

VIC
124,212

(+1,871 last
24 hours)

QLD
83,325

(+166 last
24 hours)

WA
39,802

(+268 last
24 hours)

TAS
12,726

(+56 last
24 hours)

SA
36,640

(+15 last
24 hours)

ACT
7,463

(+2 last
24 hours)

NT
2,858

(+101 last
24 hours)

Data as at:
05 Jul 2021

Commonwealth primary care doses administered



Primary Care vaccine administration sites*

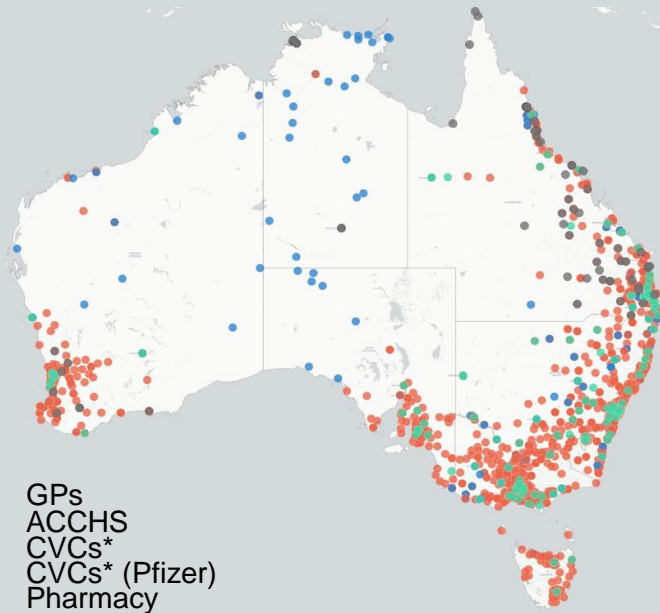
5,115	135	62	158	65
GPs	CVCs	CVCs (Pfizer)	ACCHS	Pharmacy



4,332,771 (+71,780 last 24 hours)

Total vaccine doses administered in primary care settings as at 05 July

Primary Care vaccine administration sites as at week of 5 July



- GPs
- ACCHS
- CVCs*
- CVCs* (Pfizer)
- Pharmacy

Number of doses administered as part of the Commonwealth primary care rollout

NSW
1,370,831
(+26,314 last 24 hours)

VIC
1,121,721
(+16,101 last 24 hours)

QLD
906,825
(+14,526 last 24 hours)

WA
408,318
(+6,450 last 24 hours)

TAS
103,925
(+1,479 last 24 hours)

SA
312,613
(+4,927 last 24 hours)

ACT
75,649
(+1,187 last 24 hours)

NT
32,889
(+796 last 24 hours)