



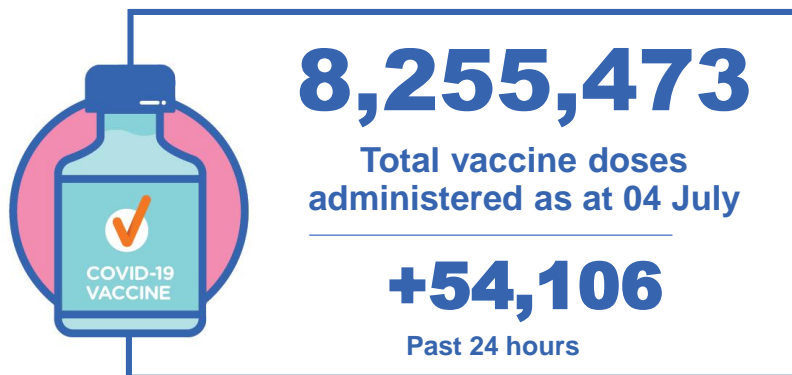
Australian Government
Operation COVID Shield

COVID-19 Vaccine Roll-out

05 July 2021

Data as at:
04 Jul 2021

Total vaccine doses



Commonwealth vaccine doses

4,705,214
(+13,019 last 24 hours)



Commonwealth vaccine doses
in primary care

4,260,991
(+12,497 last 24 hours)



Commonwealth vaccine doses in
aged and disability facilities

444,223
(+522 last 24 hours)



3,550,259 (+41,087 past 24 hours)

Total vaccine doses administered in
State and Territory clinics as at 04 July



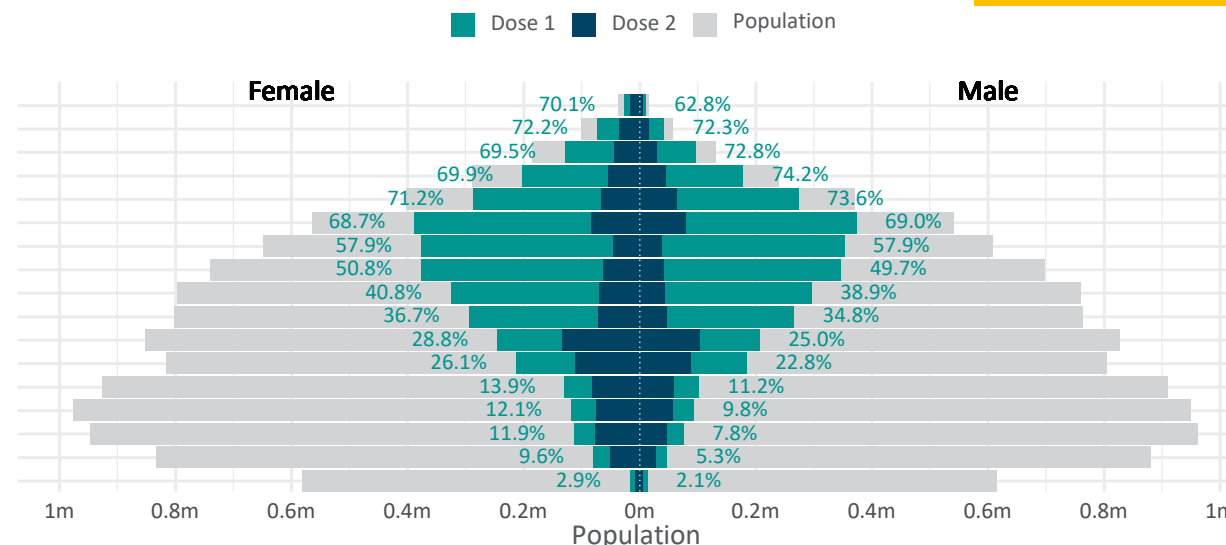
Doses by age and sex

First and second doses by age and sex, using ABS age brackets

Australia's COVID-19
Vaccine Roadmap

Data as at:
04 Jul 2021

Age	Dose 1	Dose 2
95+	36,030 (68.1%)	21,211 (40.1%)
90-94	114,566 (72.3%)	50,994 (32.2%)
85-89	224,212 (70.9%)	72,062 (22.8%)
80-84	379,959 (71.9%)	99,062 (18.7%)
75-79	560,468 (72.4%)	129,198 (16.7%)
70-74	761,502 (68.9%)	163,350 (14.8%)
65-69	729,299 (58.0%)	84,431 (6.7%)
60-64	723,407 (50.4%)	103,796 (7.2%)
55-59	621,028 (39.9%)	111,375 (7.2%)
50-54	560,209 (35.8%)	117,030 (7.5%)
45-49	451,472 (26.9%)	236,031 (14.1%)
40-44	396,928 (24.5%)	200,019 (12.3%)
35-39	231,657 (12.6%)	141,328 (7.7%)
30-34	211,755 (11.0%)	131,299 (6.8%)
25-29	188,500 (9.9%)	123,053 (6.5%)
20-24	127,551 (7.4%)	78,910 (4.6%)
16-19	29,517 (2.5%)	14,193 (1.2%)



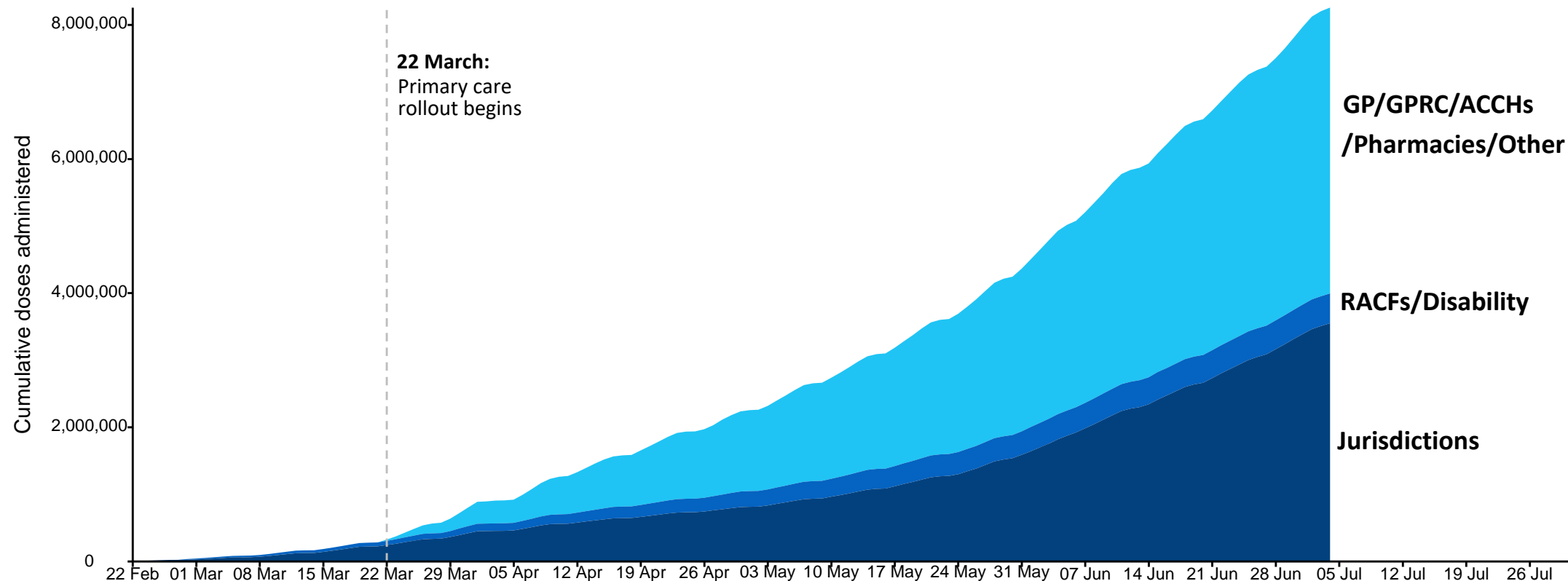
	AUS	ACT	NSW	NT	QLD	SA	TAS	VIC	WA
16 and over - dose 1	6,348,060	139,541	1,840,850	70,746	1,215,478	459,581	168,918	1,848,794	604,457
16 and over - dose 2	1,877,342	50,816	567,316	32,308	369,481	130,566	59,760	507,228	160,146
16 and over - population	20,619,959*	344,037	6,565,651	190,571	4,112,707	1,440,400	440,172	5,407,574	2,114,978
16 and over % with dose 1	30.79%	40.56%	28.04%	37.12%	29.55%	31.91%	38.38%	34.19%	28.58%
16 and over % with dose 2	9.10%	14.77%	8.64%	16.95%	8.98%	9.06%	13.58%	9.38%	7.57%
50 and over - dose 1	4,710,680	87,622	1,392,670	34,325	915,996	348,792	133,920	1,328,823	468,750
50 and over - dose 2	952,509	20,474	304,327	11,567	213,785	67,394	36,632	209,131	89,324
50 and over - population	8,749,703	127,802	2,807,793	62,280	1,758,855	674,384	220,036	2,211,211	885,370
50 and over % with dose 1	53.84%	68.56%	49.60%	55.11%	52.08%	51.72%	60.86%	60.09%	52.94%
50 and over % with dose 2	10.89%	16.02%	10.84%	18.57%	12.15%	9.99%	16.65%	9.46%	10.09%
70 and over - dose 1	2,076,737	35,390	647,484	8,502	413,170	167,629	59,275	546,995	198,369
70 and over - dose 2	535,877	11,065	168,975	3,514	117,753	40,919	19,253	125,580	48,890
70 and over - population	2,934,706	39,946	962,606	12,343	577,767	240,514	77,155	763,519	280,281
70 and over % with dose 1	70.76%	88.59%	67.26%	68.88%	71.51%	69.70%	76.83%	71.64%	70.78%
70 and over % with dose 2	18.26%	27.70%	17.55%	28.47%	20.38%	17.01%	24.95%	16.45%	17.44%

*National population will not equal sum of listed jurisdictions due to a small number of people counted in national population residing in some 'other' territories

Cumulative doses administered by channel

Data as at:
04 Jul 2021

Cumulative doses administered (04 Jul): **8,255,473**



Source: Department of Health
Data as at 04 Jul

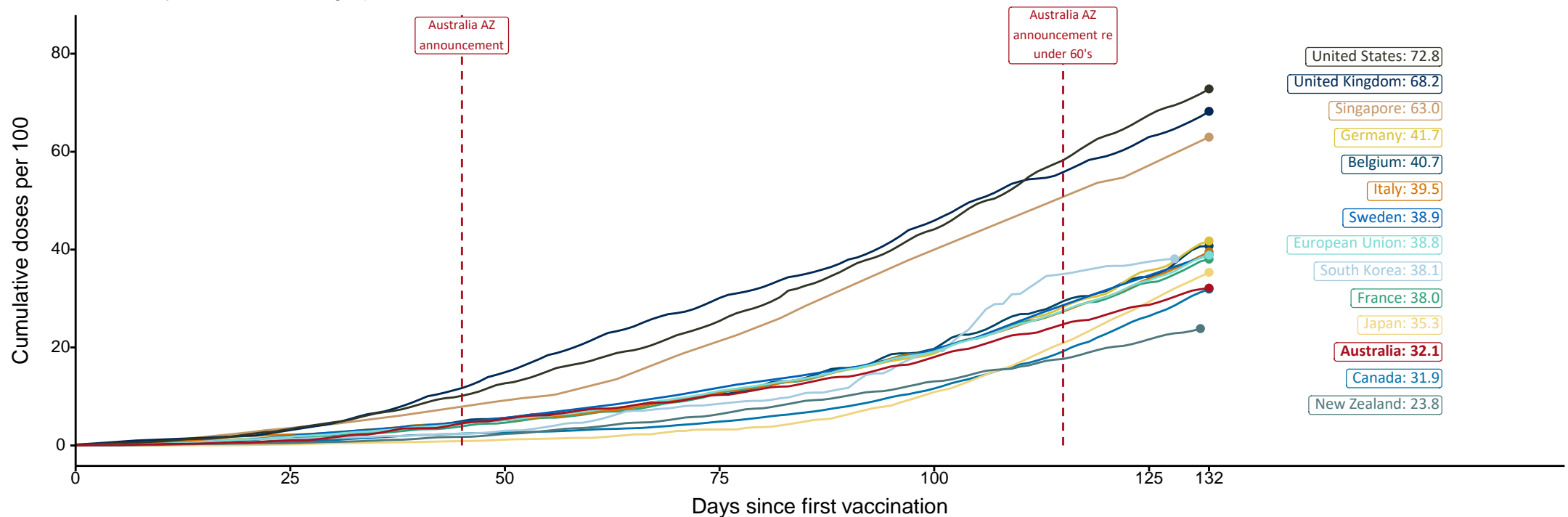
International comparisons at equivalent stages of rollout (Day 132)

Data as at:
04 Jul 2021

Australia's COVID-19
Vaccine Roadmap

Cumulative doses administered (04 Jul): **8,255,473**

The x-axis is truncated at the length of Australia's vaccination program. Countries with intermittent reporting have had their doses per 100 imputed to Australia's current stage of rollout. Israel excluded as it is beyond scale of the graph.



Source: Department of Health (Australia), Our World in Data (international)
Latest data: 04 July

Data as at:
04 Jul 2021

Commonwealth aged care doses administered



Aged care and residential
disability doses administered

236,309

First doses

207,914

Second doses

Residential aged care
facilities

2,566

Sites visited for first doses

2,565

Sites visited for second doses



444,223

(+522 last 24 hours)

Total vaccine doses administered in aged
care and disability facilities as at 04 July

Number of doses administered as part of the Commonwealth aged and disability care rollout

NSW
139,676

(+522 last
24 hours)

VIC
122,341

(+0 last
24 hours)

QLD
83,159

(+0 last
24 hours)

WA
39,534

(+0 last
24 hours)

TAS
12,670

(+0 last
24 hours)

SA
36,625

(+0 last
24 hours)

ACT
7,461

(+0 last
24 hours)

NT
2,757

(+0 last
24 hours)

Data as at:
04 Jul 2021

Commonwealth primary care doses administered



Primary Care vaccine administration sites*

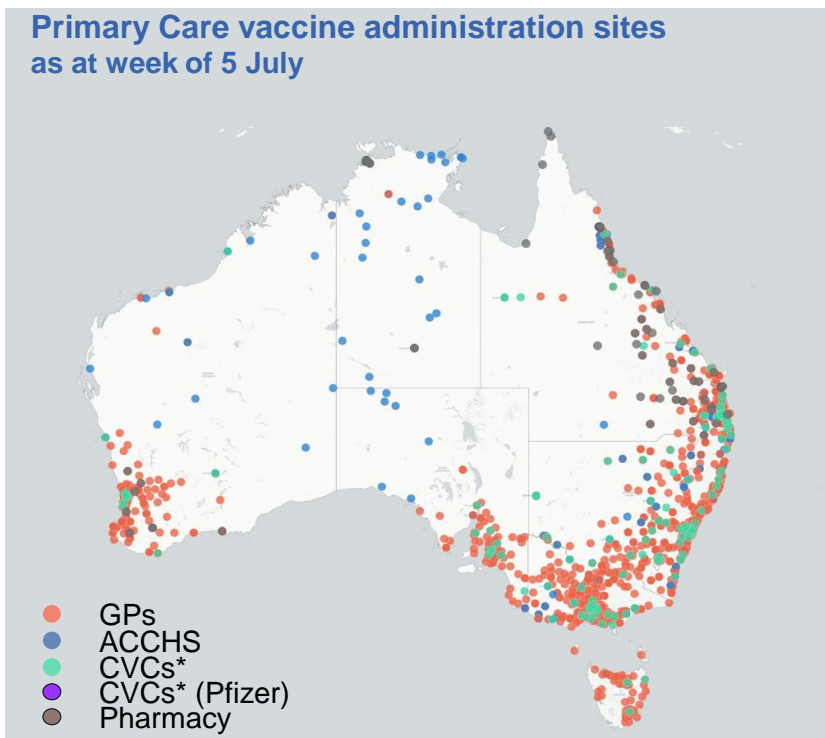
5,115	135	62	158	65
GPs	CVCs	CVCs (Pfizer)	ACCHS	Pharmacy



4,260,991 (+12,497 last 24 hours)

Total vaccine doses administered in primary care settings as at 04 July

Primary Care vaccine administration sites as at week of 5 July



Number of doses administered as part of the Commonwealth primary care rollout

NSW
1,344,517
(+3,567 last 24 hours)

VIC
1,105,620
(+2,985 last 24 hours)

QLD
892,299
(+2,332 last 24 hours)

WA
401,868
(+1,801 last 24 hours)

TAS
102,446
(+295 last 24 hours)

SA
307,686
(+782 last 24 hours)

ACT
74,462
(+734 last 24 hours)

NT
32,093
(+1 last 24 hours)

Administration and Utilisation

Doses as at Week 19

Australia's COVID-19
Vaccine Roadmap

	Distributed (including coming weeks)	Available (delivered weeks 1-18, until 27 June)	Administered (weeks 1-19, until 4 July)	Available minus Administered	Estimated Dose Utilisation % (see note)
NSW	1,139,200	1,037,410	921,659	115,751	99%
VIC	1,602,100	1,427,620	1,166,277	261,343	92%
QLD	800,384	715,182	615,144	100,038	96%
WA	474,378	435,628	320,991	114,637	84%
SA	368,830	327,080	251,411	75,669	87%
TAS	151,054	136,324	119,344	16,980	98%
NT	97,904	82,828	64,243	18,585	88%
ACT	113,350	102,820	91,190	11,630	99%
Jurisdiction delivered total	4,747,200	4,264,892	3,550,259	714,633	93%
Commonwealth Aged Care & Disability	530,092	504,652	444,223	60,429	N/A
Commonwealth Primary Care	7,046,158	6,562,296	4,260,991	2,301,305	75%
Total	12,323,450	11,331,840	8,255,473	3,076,367	83%

About this data

- Distributed – Total doses delivered to sites. Based on logistics provider data. This figure includes doses allocated for administration in the coming week.
- Available – total doses that could have been administered to date, less doses re-distributed from States & Territories to Primary Care or Aged Care & Disability. (i.e. does not include those deliveries recently received, and intended for use in the coming week).
- Administered – Doses administered as at 4 July 2021.
- The dose utilisation is calculated based on the total doses administered and a small % wastage in line with international standards in relation to total available doses.
- For Aged Care & Disability, the doses available for administration is for the full period (Weeks 1-19).
- Aged Care & Disability utilisation is not provided as the in-reach rollout is demand-based, with vaccines ordered based on resident numbers.